

Losing a loved one is hard enough.

Empathy is here to help you with everything that comes next. We guide and support you along your journey of loss, giving you the tools to navigate and prioritize every task.

Try it for free:

(222) 123-4512

Text Me the App



Relief is near.

Empathy was created by a team of software developers, estate lawyers, designers, and grief experts who came together with the goal of helping you and your family better cope with the many aspects of loss.

[Learn More](#)

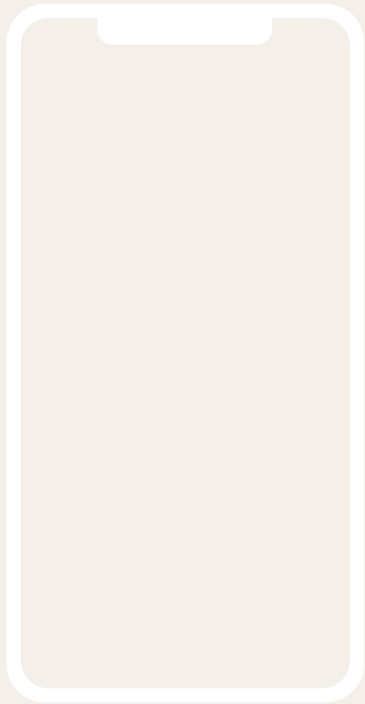
How it works

- 1 Download the app.**
Download Empathy to your iPhone or Android device. Sign up to get started.
- 2 Personalize your journey.**
Every family and every situation is unique. We'll ask you a few questions about your loved one to tailor our guidance to your specific needs.
- 3 Get comprehensive guidance and support.**
We are here to help you navigate any task, with all the digital tools, expert advice, and real-time assistance you need.

Built for peace of mind.

Empathy is designed to show you the specific steps to take, based on your unique situation and at your own pace. Whether you're planning a funeral, managing an estate, or dealing with any other arrangements, get the knowledge and support you need.

Today:

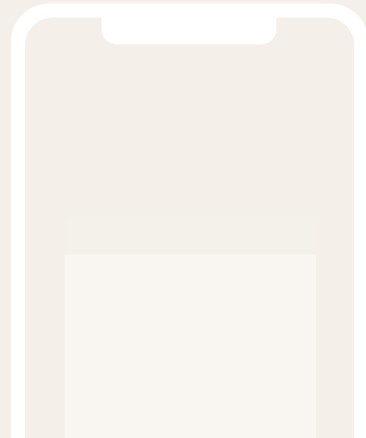


Standing by to assist you.

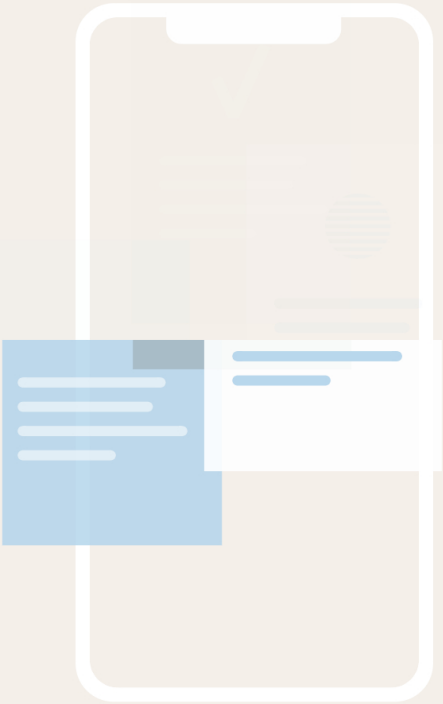
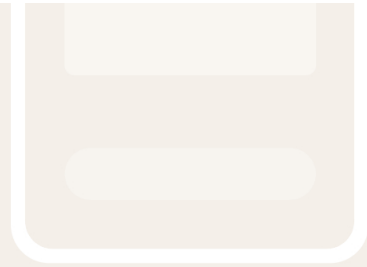
Chat with an expert who understands what you're going through. Our care specialists will provide you with the answers you need, or help you find local professionals. They can even take some tasks off your hands and do them for you.

Easily track and collect benefits.

Get simple and immediate guidance to all the benefits your family may be entitled to—including many you may not have known about. The app helps you locate, determine eligibility, and collect on these important



sources of funding for the funeral and the estate.

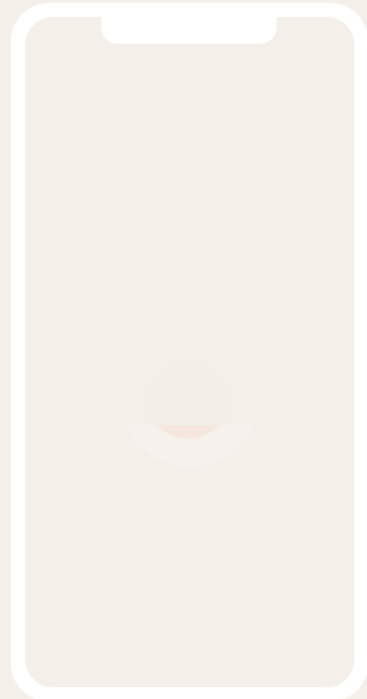


Paperwork, figured out.

The app helps you locate and safely store important papers, and guides you through handling them. Bills, debt, unused services, insurance policies, bank accounts, and more, to help you stay organized and in control.

Listen in. Understand grief.

Grief is a fundamental human experience, and navigating it underlies every aspect of the Empathy app. Original audio chapters walk you through the tangled processes of grieving to help you observe, understand, and come to grips with what you're going through.



Get in-depth knowledge to help you navigate the maze of loss.



House



Property & Assets



Applying for Benefits



Managing Accounts



Taxes



Identity Theft Prevention



Immediate Arrangements



Probate



Grief & C

[See Full Library](#)

Your security is our priority.

Empathy is committed to ensuring that your data is and will always be safe and private. We use bank-level 256-bit encryption to store and transmit data, and your most private information is protected with two-factor authentication.

In the words of our users

“

“I feel like everybody's still in the 1950s, where you need a phone call for everything. Why is it not automated? I don't understand. I feel like we're living in the Dark Ages. It would be so much less painful if things were automated.”

– Traci, 53, California

As seen on:

TC TechCrunch

FORTUNE

WSJ

ZDNet

FASTCOMPANY

AXIOS

30-day free trial

No credit card required, no strings attached.

\$65, all included

Just one payment, for as long as you need. No hidden fees.

Start your free trial

(222) 123-4512

Text Me the App

We will send a text message to your phone with a download link.

Company

About
Join the Team
Partner With Us
Press
Privacy Policy
Terms of Service
Contact Us

Resources

Learn
FAQ
COVID-19
Help

Subscribe to Our Newsletter



Empathy is for everyone, because loss affects everyone. We're proud to support every person and family, regardless of their age, race, religion, ethnicity, gender identity, or sexual orientation.



About Us

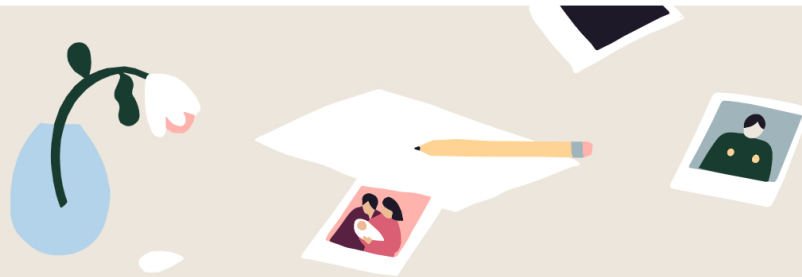
We're on a mission
to change the way the
world deals with loss.



empathy (noun)

'em-pə-thē

The action of understanding, being aware of, being sensitive to, and vicariously experiencing the feelings, thoughts, and experience of another. Also, what the world needs more of right now.



Empathy is for everyone.
Because loss affects everyone.

3 Million

people die in the US every year.

68%

of Americans who are in grief suffer physical symptoms.

540

hours of work are required to settle a loved one's affairs.

Core values



Trustworthy

We value transparency, and we always have families' best interests at heart. We are committed to providing reliable advice and information, and to keeping all private data safe and secure.

Empowering

Families are at the core of everything we do, and giving them the tools they need is our most important job. We help them achieve their goals, providing clarity, managing progress, and recognizing accomplishments.



Unconditional

We are here to serve every single family dealing with loss, without exceptions or limitations. We are committed to serving everyone equally, being attentive to different needs, religious affinities, and life situations.



Caring

We know how overwhelming life and loss can be. We are here for people, meeting them where they are right now, and showing sensitivity to their needs by providing practical and emotional support.

Our commitment

We believe that loss should be less of a burden for every family. It should be less confusing, inefficient, expensive, and emotionally draining. That's why we built Empathy – to meet families where they are, put the control back in their hands, and give them practical tools to navigate the hardest time in their lives.

As founders with families of our own – and our own histories of loss – we consider it our responsibility and our privilege to help anyone dealing with the loss of a loved one, to save them time, money, and emotional pain.

We therefore have made a commitment to always keep families and their best interests at the forefront of everything we do as a company, with transparency, compassion, and responsiveness to their needs.

Loss is very hard. But we're dedicated to making it a bit less hard, for everyone, every day.



Ron Gura
Co-Founder & CEO



Yonatan Bergman
Co-Founder & CTO

We proudly pledge support for
compassionate approaches to technology,
life, and loss.



The Empathy Foundation

While building a sustainable solution for families, we are also committed to supporting those who may not be able to afford our services. We are calling for any registered nonprofits that are interested to reach out and become our partners in giving more families access to the dignity and comfort that everyone deserves as they experience loss. As Empathy grows, we look forward to being able to increase our giving and help as many people as we can.

Backed by mission-driven funds.

Join us to help ease the pain of loss

When a loved one dies, the family is immediately faced with huge challenges, both emotional and logistical. Empathy was built to give them guidance and peace of mind, leveraging the huge capacity of technology to assist with the details of this often-overlooked space.

Now we're growing, and we're looking for talented people to come aboard with us on our mission to empower bereaved families and help them along every step of the way.

[Join Our Team](#)

Company

[About](#)
[Join the Team](#)
[Partner With Us](#)
[Press](#)
[Privacy Policy](#)
[Terms of Service](#)
[Contact Us](#)

Resources

[Learn](#)
[FAQ](#)
[COVID-19](#)
[Help](#)

[Subscribe to Our Newsletter](#)



Empathy is for everyone, because loss affects everyone. We're proud to support every person and family, regardless of their age, race, religion, ethnicity, gender identity, or sexual orientation.

1178 Broadway New York, NY 10001



© 2021 Empathy. All rights reserved.

[Feedback](#)

The Library

All the info you need to get you through this.

Our library of over 150 original articles gives you access to our up-to-date expert information and advice, all in one place. It's absolutely free for everyone, forever – and we're constantly adding more, so you'll always find what you're looking for.



Browse the Empathy knowledge base

- Applying for Benefits
- Bills & Debt
- Grief & Grieving
- Identity Theft Prevention
- Immediate Arrangements
- Informing Others
- Managing Accounts
- Personal Belongings
- Probate
- Property & Assets
- Searching for Documents
- Taxes
- The Funeral
- The House
- The Will

Featured articles

First steps for an executor

Probate | 8 min read

Read More

It's the little things: Dealing with keepsakes

Personal Belongings | 8 min read

Read More

Reading your loved one's last wishes

Immediate Arrangements | 5 min read

Read More



The Funeral

Alternative memorial ceremonies

The Funeral | 6 min read



The Funeral

A funeral or memorial ceremony is an opportunity for you and your family and the community of those who knew your loved one to grieve, and to honor and celebrate their life. The type of service you choose and all of its details will depend upon several factors; we're here to guide you through each one.

[See All Articles](#)

Writing the eulogy >

The Funeral | 5 min read

A monument in words: Writing an obituary >

The Funeral | 8 min read

How best to work with a funeral home >

The Funeral | 5 min read



The Will

Whether or not your loved one left a will, you will need to make sure their property is passed on to the right people. With a will, inheritance will follow your loved one's wishes; without it, state law will decide. Either way, following these rules will ensure that your loved one's life and legacy are properly honored.

[See All Articles](#)

Family, inheritance, and keeping the peace >

The Will | 6 min read

Which will: What to do if your loved one left multiple wills >

The Will | 5 min read

What is a holographic will? >

The Will | 5 min read

When your loved one's final wishes are impossible >

The Will | 5 min read

Listen: Understanding grief

When you're in grief, it can make everything else seem so much harder. Let our original audio episodes guide you through the difficult mental and emotional terrain of grief with compassionate messages from experts in the field.



Grief Has No Timeline

0:00

6:02

For more episodes

Download the App



Searching for Documents

The document search can be a daunting task, but it's important for finding your loved one's assets, debts, accounts, and more. We'll help you organize the search and understand which papers to scan, save for later, or dispose of safely.

See All Articles

Finding unexpected information about your loved one >

Searching for Documents | 5 min read

Accessing your loved one's safe-deposit box >

Searching for Documents | 4 min read

What to do when you can't find important documents >

Searching for Documents | 6 min read

Protecting your loved one's sensitive information >

Searching for Documents | 5 min read



Informing Others

Sharing the sad news when you carry such a heavy heart can be hard, but it's important to let others into your circle of grief and allow them to support you at this very difficult time.

See All Articles

Telling family and friends the sad news >

Informing Others | 6 min read

How to inform people about a loved one's death >

Informing Others | 8 min read

Notifying your loved one's wider circle >

Informing Others | 6 min read

Finding a loved one's religious clergy >

Informing Others | 4 min read

Loss is hard. Its vocabulary shouldn't be.

We speak the specialized language of estates and funerals, so you don't have to.

Memorial

A service held to honor someone's life. Memorials are considered distinct from funerals because they are held with the loved one's remains present and are not for burial, although services with the loved one's remains are also called memorials. A funeral is a more formal memorial and is often unstructured.

Estate

The sum total of someone's net worth, including all assets. From a legal standpoint, an estate is not simply everything the person owns, but the value of all of these assets minus any debts or other liabilities. Estates are calculated differently depending on their purpose. For example, the taxable estate may include assets that are not in the probate estate.

Administrator

Appointed by the court to manage the estate of someone who has died. An administrator is an executor, but as an executor, he or she is responsible for and distributes the estate according to a procedure set by law.

To see the full glossary

Download the App

Company

- About
- Join the Team
- Partner With Us
- Press
- Privacy Policy
- Terms of Service
- Contact Us

Resources

- Learn
- FAQ
- COVID-19
- Help

Subscribe to Our Newsletter



Empathy is for everyone, because loss affects everyone. We're proud to support every person and family, regardless of their age, race, religion, ethnicity, gender identity, or sexual orientation.

1178 Broadway New York, NY 10001



© 2021 Empathy. All rights reserved.

Feedback

Partner With Us

End-of-life care, built for the 21st century.

Join us on our mission to democratize care for everyone dealing with loss. Empathy is the first customer-centric company built from the ground up to help families, and the companies and agencies that serve them, deal with the loss of a loved one.



Serving families better, together.

We believe that dealing with a loved one's affairs just doesn't have to be as hard, as tedious, or as confusing as it often is.

Empathy is the hand-in-hand guide, providing continuity of care to bereaved families from day one. We can't remove all the pain of losing someone, but we can reduce the suffering, confusion, and stress of the days, weeks, and months after.

We are teaming up with partners who understand the value of freeing families from all the burdensome and bureaucratic steps of loss – tasks that can seem like stubborn remnants of a bygone era – so that the bereaved can focus on the important things, like spending time together and honoring the lives of those who have passed away.

Ready to get started with Empathy?

We are looking to partner with those who bring integrity, support, and compassion to the processes and logistics that affect bereaved families.

Join us to bring empathy to every family experiencing all of the challenges of loss.

Select your industry:

Corporate HR & benefits

Financial planning

Hospice

Healthcare

Insurance services

Senior living

Funeral services

Other



Loss is so hard – and it affects us all.

57%

of Americans lost a loved one within the last three years.

\$75B

is lost by companies every year due to grief.

540

hours of work are required to settle a loved one's affairs.

In the words of our users

“

“I feel bad for those that have to go through this alone, because there's so many that do, and I feel that the process is such a debacle. It's just a mess. There's so much to do, there's so much to know. One wrong move and you can have all your bank accounts frozen.”

– Roger, 31, Ohio

As seen on:

 Hospice News



coverager

Company

[About](#)
[Join the Team](#)
[Partner With Us](#)
[Press](#)
[Privacy Policy](#)
[Terms of Service](#)
[Contact Us](#)

Resources

[Learn](#)
[FAQ](#)
[COVID-19](#)
[Help](#)

[Subscribe to Our Newsletter](#)



Empathy is for everyone, because loss affects everyone. We're proud to support every person and family, regardless of their age, race, religion, ethnicity, gender identity, or sexual orientation.

1178 Broadway New York, NY 10001



© 2021 Empathy. All rights reserved.

[Feedback](#)