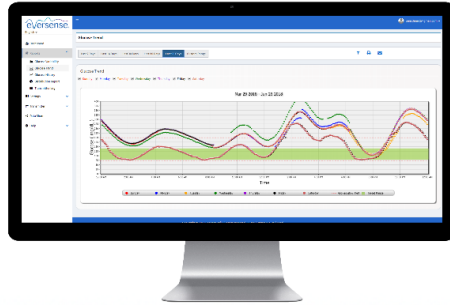




## Eversense Data Management System



Eversense DMS is a web-based application that enables you to upload glucose readings from your Eversense Mobile App without having to use a cable. The application stores your data and offers a number of reports to show trends and patterns over time<sup>1</sup>.

When you download and install the Eversense Mobile App, you create a secure account that allows Eversense CGM data from your mobile device to automatically sync to the Eversense DMS software about every 5 minutes.

To log in, use the same username and password you used to create your account when you installed the Eversense Mobile App.

To view browser requirements for Eversense DMS click [here](#)

[CLICK HERE TO LOG IN](#)

### For Healthcare Professionals:

The Eversense Data Management System (DMS) Pro is a web-based application for healthcare professionals to manage and review glucose data of their patients that use the Eversense CGM System.

[CLICK HERE TO LOG IN](#)

<sup>1</sup> The Eversense Data Management System does not provide medical advice. Changes to your treatment plan should only be made by your healthcare provider.

### DISCLAIMER

The Eversense® Continuous Glucose Monitoring (CGM) System is indicated for continually measuring glucose levels in persons age 18 and older with diabetes for up to 90 days. It is intended to complement, not replace, fingerstick blood glucose monitoring. The sensor insertion and removal is performed by a physician. The Eversense CGM System is a prescription device; patients should talk to their doctor to learn more. For important safety information, see <https://eversense diabetes.com/safety-info/>. This website contains information on products which is targeted to a wide range of audiences and could contain product details or information otherwise not accessible or valid in your country. Please be aware that we do not take any responsibility for accessing such information which may not comply with any valid legal process, regulation, registration or usage in the country of your origin.