



# BV Endura

## Mobile C-arm

718075 [Find similar products >](#)

Confidently perform open and minimally-invasive surgeries across multiple clinical specialties including orthopedic, pain management and peripheral vascular procedures. The BV Endura enables quick positioning, easy patient access, and superb quality images to enhance workflow and decision making.

Contact us



**Purchasing info >**  
**Call 1-800-722-9377**

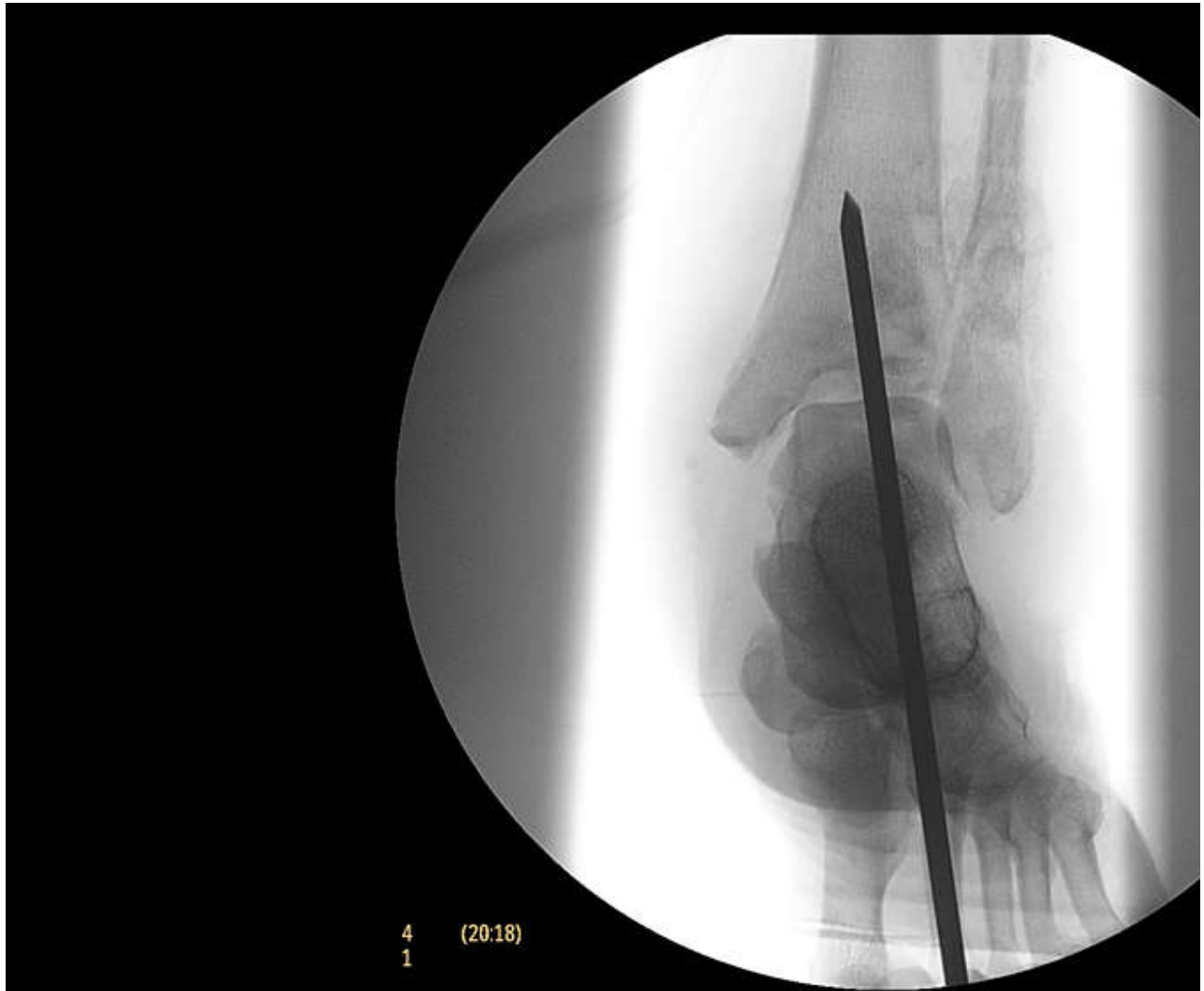


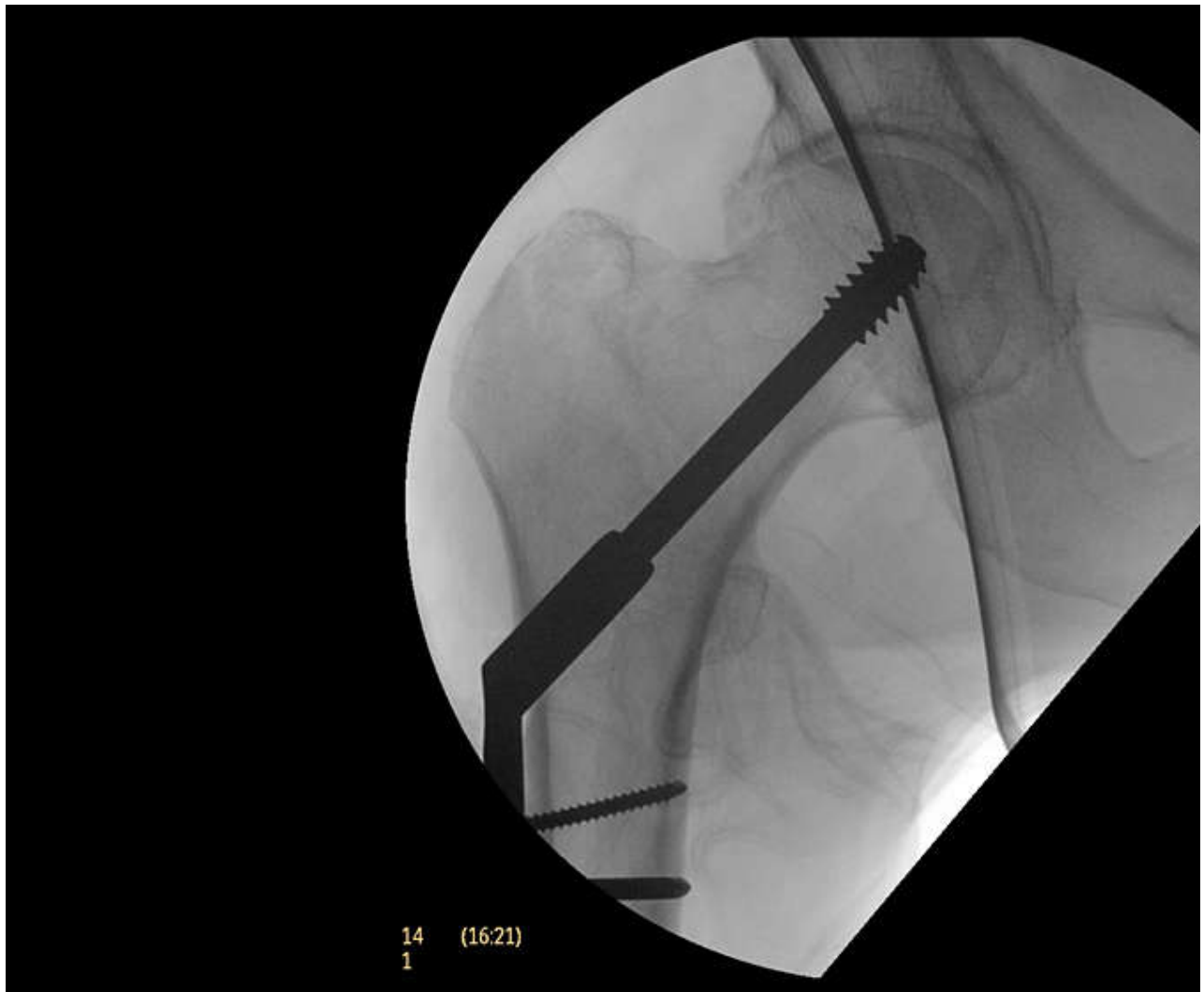
**Contact us >**  
**Request contact**

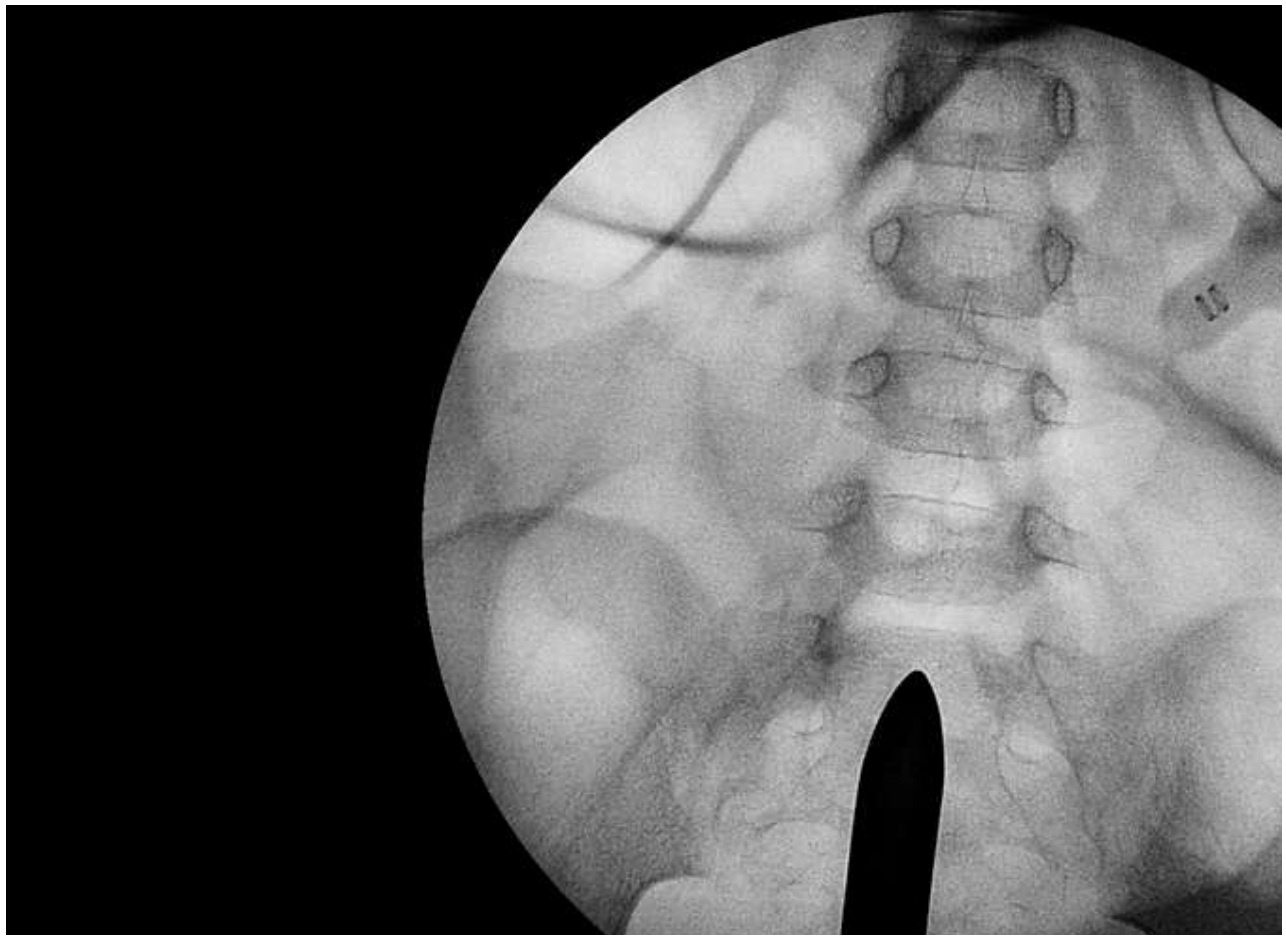


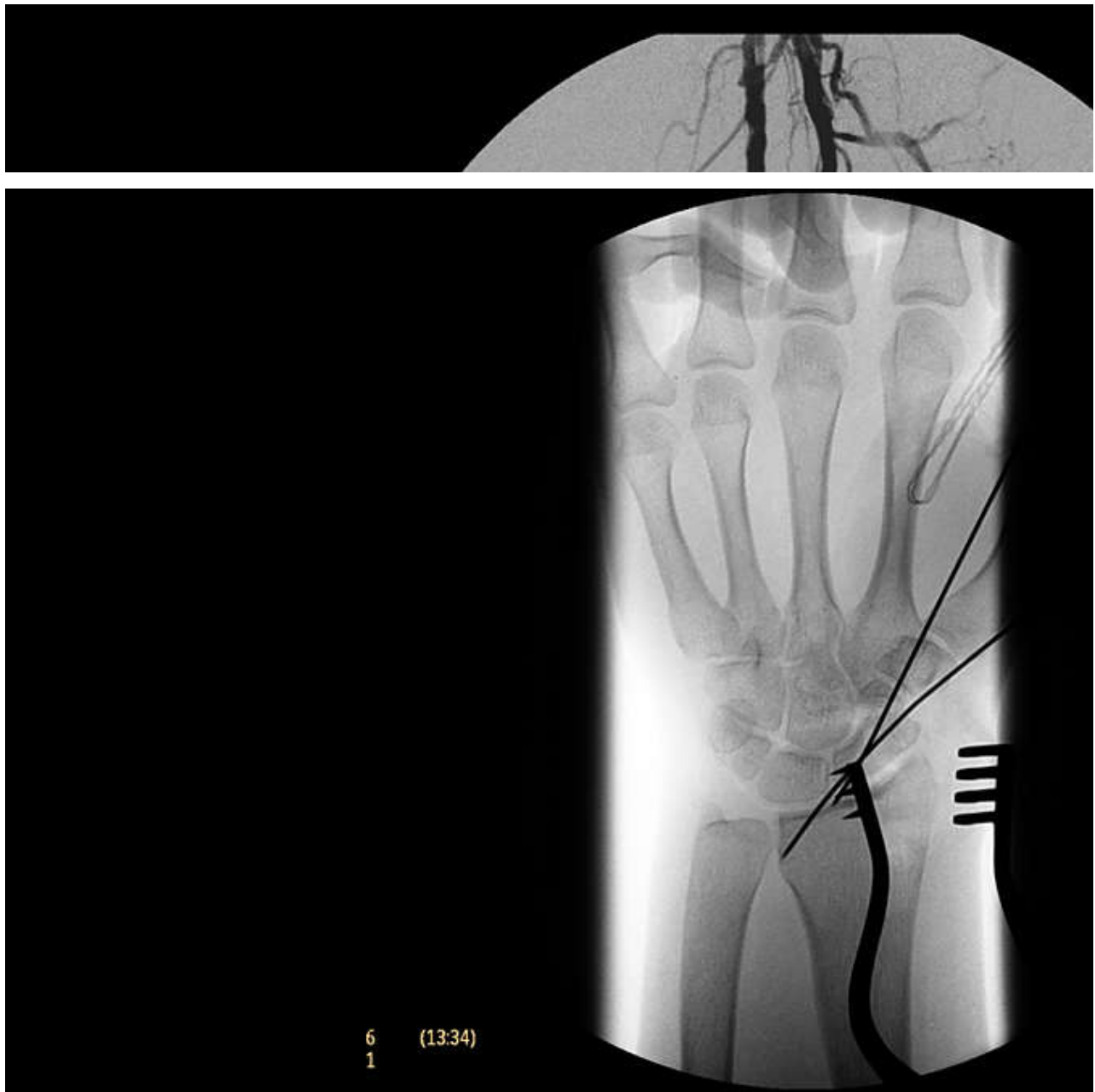
**Support >**  
**Call 1-800-722-9377**

# Media Gallery











## Features

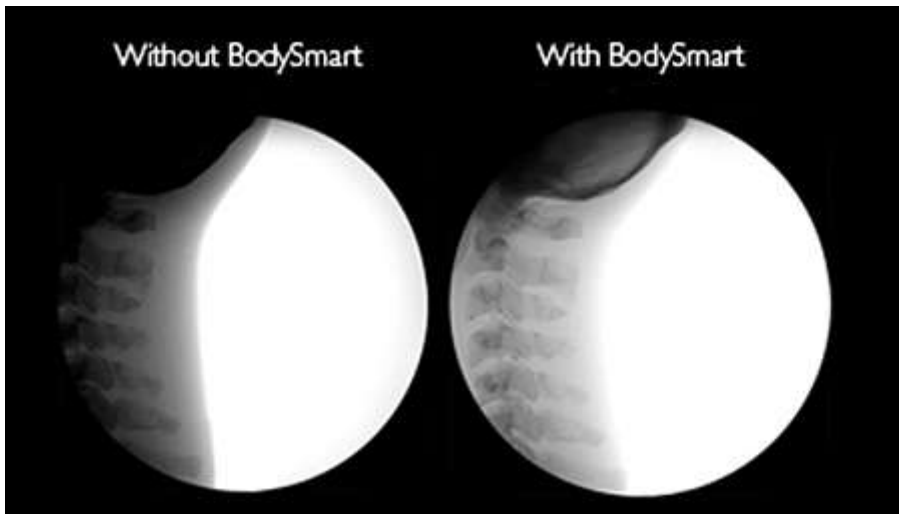
### BodySmart



#### Gain insight into all anatomy

Whether performing orthopedic, abdominal, or vascular procedures, high quality detailed views and good spatial resolution allow for high quality patient care. Our full digital 1K<sup>2</sup> imaging chain provides advanced noise reduction and 2D edge enhancement to enhance insight into critical vasculature and complex structures. High quality fluoroscopy, subtraction runs, and roadmap guidance support confident decisions, whether you are delicately placing a pedicle screw or deploying a stent in a difficult position.

# Automatic Shutter Positioning



## Save time and X-ray dose with BodySmart software

To help you work quickly yet gently, Philips unique BodySmart software promotes first time right imaging and dose efficiency. It delivers consistently superb image contrast by precisely adapting the measuring field to the area of interest. This has the potential to reduce retakes and further manage X-ray dose.

## 12" Image Intensifier



## Broaden your vascular capabilities

Carry out venous or iliac access as well as more complex EVAR procedures with high quality imaging, excellent spatial resolution, and broad coverage of our 12" image intensifier. The extended C-arm



rotation of up to 135° allows you to make commonly required projections for most vascular procedures.

## 1K<sup>2</sup> digital imaging



### Streamline vascular workflow

We offer a wide range of vascular options with different fluoroscopy and exposure frame rates and optional acquisition modes, like C0<sup>2</sup>, to enhance visualization during demanding vascular procedures. The single user concept allows clinicians to use a footswitch and remote control to control various imaging functions from the table.: Subtraction, Trace, Roadmap, or Masking.

## Automatic contrast/brightness



### Make your work flow



Every procedure has its own challenges. The BV Endura gives you the flexibility to handle it all. Thanks to its compact size, this system can be easily moved around tight spaces and brought as close to the operating table as desired. To save time between cases, patient demographics can be entered manually or a worklist retrieved from the network on the Mobile View Station without connecting it to the C-arm. Set the ideal parameters for each procedure with one touch of the Automatic Programmed Fluoroscopy (APF) settings.

## Ultra-compact



### Manage dose efficiently with DoseWise

With the BV Endura, you benefit from highly evolved X-ray technology with comprehensive dose management features. Philips was the first company to market the mobile C-arm and has over half a century of experience in developing mobile C-arm systems for the surgical environment. That translates into a full range of radiation management features that allow low X-ray dose for lengthy surgical procedures, while providing exceptional quality images:

## 19" monitors



## Experience ergonomic viewing and fast clean-up

To provide ergonomic viewing for different medical staff, the Mobile View Station can be placed in a variety of positions. The height and angles of the monitors can be adjusted to comfortable viewing positions. The smooth, sealed controls simplify cleaning.

## Reduce your total cost



## Reduce your total cost of ownership with high utilization

By supporting a wide range of procedures and improving workflow efficiency during imaging, the BV Endura can help you increase system utilization and reduce the total cost of ownership. You can perform a full range of general surgical procedures, as well as dedicated vascular, thoracic, abdominal, pain management, and orthopedic surgery.

# Count on us as your



## Count on us as your patients count on you

Staying on top of today's complex and ever changing healthcare environment is challenging enough. The last thing you need to be concerned with is keeping your care systems up and running smoothly. At Philips, we work as one with your teams. We share their dedication to solve issues before they start, and their drive to keep going day and night until the job is done. With us taking care of your systems you can focus on what really matters – delivering better care, to more people, at lower cost. Together, we can create a healthier future.

## Easy connectivity

### Manage patient and staff radiation

Philips unique beam filters with an additional 0.1 millimeter of copper and 1 millimeter of aluminum increase the quality of the X-ray beam and reduce the patient skin dose by 40%.<sup>1</sup> Pulsed Fluoroscopy enhances imaging of dense and complex anatomy to support you in further managing dose. Two Low Dose Fluoroscopy (LDF) modes<sup>2</sup> apply  $\frac{1}{2}$  and  $\frac{1}{4}$  the dose of continuous fluoroscopy to reduce exposure without affecting image quality.

\*\*Compared to conventional filtration of 3 millimeters aluminium as required by IEC 60601-2-43, 2010.

\*\*May not be available in all countries.

---

 > BV Endura >

© Koninklijke Philips N.V., 2004 - 2020. All rights reserved.