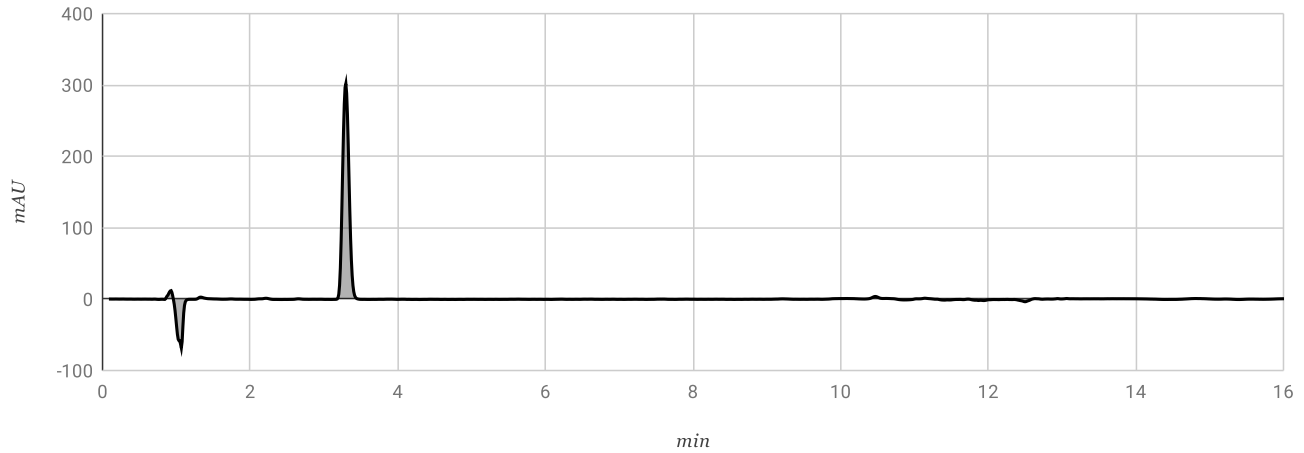




### Sample Information

Sample Name:	R-19239-2.CEN-HC_Pail1	CBD Concentration:	96.19%
Method Filename:	HPLCalibration0807.lcm	* Potential CBD Concentration:	96.19%
Batch Filename:	08292019\Samples2.lcb	* Potential CBD Concentration represents total CBD and CBDA (with adjustments for mass conversion)	
Vial #:	31		
Injection Vol (uL):	15	THC Concentration:	Non-Detect
Date Processed:	8/29/2019	* Potential THC Concentration:	Non-Detect
Time Processed:	4:29:26 PM	* Potential THC Concentration represents total THC and THCA (with adjustments for mass conversion)	

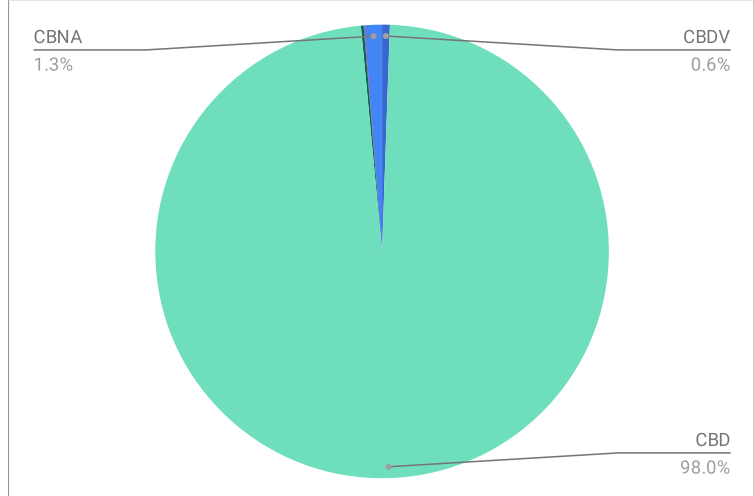
### HPLC Chromatogram



### Peak Table

Analyte	Retention Time	Conc. (%)
CBDV	2.213	0.542
CBD	3.294	96.187
CBG	--	ND
THCV	--	ND
CBDA	--	ND
CBGA	--	ND
CBN	--	ND
THC	--	ND
THCVA	--	ND
D8-THC	--	ND
CBL	7.595	0.192
CBC	9.213	0.046
CBNA	10.47	1.228
THCA	--	ND

### Relative Cannabinoid Concentrations



Centuria Foods, Inc.

Analysis Conducted By: Angelina Martinez