

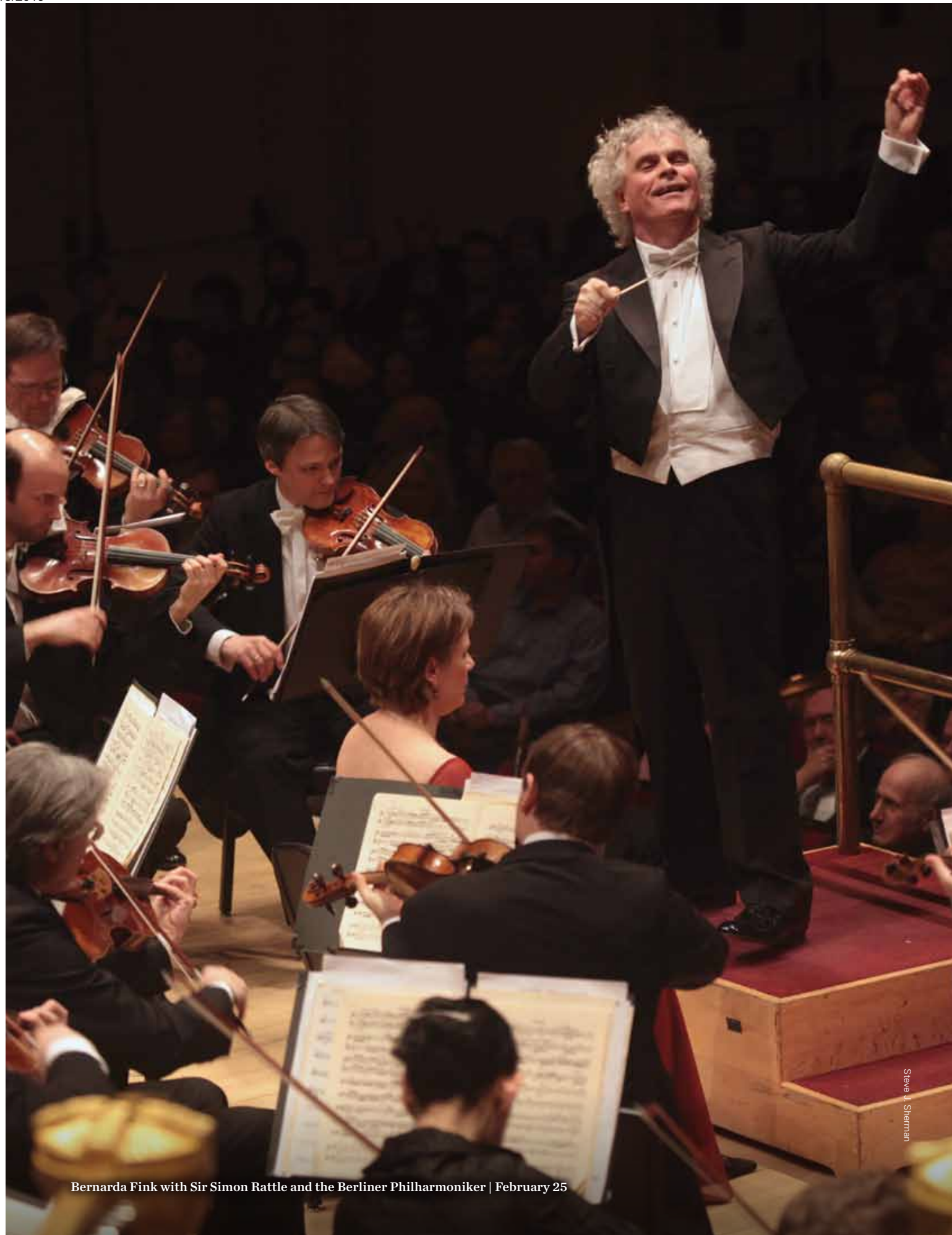
EXHIBIT 1

CARNEGIE HALL

presents



2011–2012 Annual Report



CARNEGIE HALL

2011–2012 Annual Report

- 2 From the Chairman of the Board
- 4 From the Executive and Artistic Director
- 6 Board of Trustees
- 8 2011–2012 Concert Season
- 30 Weill Music Institute
- 42 The Academy
- 48 Studio Towers Renovation Project
- 50 Donors
- 70 Treasurer’s Review
- 71 Consolidated Balance Sheet
- 72 Administrative Staff and Volunteers

Cover photo: Goran Bregovic & His Wedding and Funeral Orchestra (October 19) by Stephanie Berger.



Chris Lee
Thomas Adès and Ian Bostridge | November 28



Steve J. Sherman
Brentano String Quartet | February 16



Julien Jourdes
L'Arpeggiata | March 15



Richard Termini
Ute Lemper with the Vogler Quartet | April 5



Jennifer Taylor
Evgeny Kissin | May 3

Bernarda Fink with Sir Simon Rattle and the Berliner Philharmoniker | February 25

From the Chairman of the Board



Dear Friends,

Carnegie Hall's 2011–2012 season was marked by great artistry, innovation in music education, and exciting opportunities to share our resources with other institutions at the local, national, and international levels. In a season that celebrated the Hall's 120-year history, we also made great strides toward creating the Carnegie Hall of the future, as can be seen in the remarkable physical transformation taking place at the Hall through its Studio Towers Renovation Project.

In the pages of this Annual Report, we review these achievements with deep gratitude to you, the treasured members of the Carnegie Hall family. Your belief in Carnegie Hall and its future is evident in your dedicated patronage and generous support, and I thank you for the many ways in which you contribute to our success.

I would like to express a special note of gratitude to Marina Kellen French and the Anna-Maria and Stephen Kellen Foundation for providing leadership support of concerts by the Berliner Philharmoniker, which took place as part of our 120th anniversary celebration. I would also like to thank Julian H. Robertson Jr. and the Robertson Foundation, which

provided generous support for the national expansion of Link Up, Carnegie Hall's education program that creatively introduces children in grades 3–5 to the orchestra.

My deep appreciation also goes to the generous Chairs and Co-Chairs of the 2011–2012 season's three gala events, which raised a total of \$4.9 million for Carnegie Hall's artistic and education programs. Special thanks go to my fellow Opening Night Gala Co-Chairs Mercedes and Sid R. Bass, Yoko Nagae Ceschina, Frederick J. Iseman, Marie-Josée and Henry R. Kravis, Katherine Farley and Jerry I. Speyer, and Ann Ziff, as well as Corporate Chairman Dennis M. Nally and PwC. For their leadership of a wonderful Medal of Excellence gala that honored legendary photographer Bill Cunningham, I thank Gala Chairs Annette and Oscar de la Renta and Sarah Jessica Parker, as well as Co-Chairs Mercedes T. Bass, Diane von Furstenberg and Barry Diller, Tina and Terry J. Lundgren, and Elizabeth and Henry T. Segerstrom. In the spring, we presented an enchanting musical theater gala that featured *The Sound of Music*, thanks to the leadership of Gala Co-Chairs Susan and Edward C. Forst, Dinny and Lester S. Morse Jr., and Nelle Nugent and Jolyon Stern, as well as Corporate Chairman Stephen R. Howe Jr., and Ernst & Young.

As always, I gratefully acknowledge the many corporations and foundations that supported Carnegie Hall last season, especially Bank of America, which returned as season sponsor for the seventh consecutive year. Finally, my sincere thanks go to the elected officials of the City and State of New York and the US government, as well as our partners at the New York City Department of Education and other agencies that work with us to bring great music to New Yorkers of all ages and walks of life.

At the close of an extraordinary year, I wish to take a moment to applaud my fellow members of the Board of Trustees for their terrific leadership, generosity, and guidance, which led us to achieve a balanced budget for the 17th consecutive season. This year, Earle S. Altman, Charles M. Rosenthal, Sana H. Sabbagh, and Beatrice Santo Domingo joined our Board of Trustees. We extend a warm welcome to these four new members, and we salute three departing trustees, Joseph J. Plumeri II, Paul J. Sekhri, and Lawrence A. Weinbach, with many thanks for their service. Finally, I commend Clive Gillinson, Executive and Artistic Director, and his enormously talented team. Under Clive's brilliant leadership, we have developed important projects—from concert programming to education to fundraising—with uniform excellence as we continue to find new and exciting ways in which Carnegie Hall can bring people together through music.

Looking beyond our walls at what Carnegie Hall can do for people all over the globe sets the context for the amazing transformation taking place within Carnegie Hall's Studio Towers. Construction work on the Hall's upper floors is moving ahead on schedule, and as the new spaces take shape we can easily imagine them coming to life with music and ideas being exchanged among students, teachers, young musicians, and world-class artists.

Carnegie Hall's new Education Wing is expected to open in 2014, at which point it will be an inspirational home for all of our music education programs, and the home base from which we will share our extensive resources with people everywhere. Our expanded and modernized backstage areas will provide first-class amenities for the great orchestras and artists who come from all over the world to perform here. In addition, a new Research Room for Carnegie Hall's Archives and a Roof Terrace atop the building will add to this fantastic setting for the enjoyment and exploration of music by visitors to Carnegie Hall.

Launching a major capital campaign in difficult economic times has been a challenge, so it is with special gratitude that I acknowledge the City of New York, my colleagues on the Board of Trustees, and many other members of the philanthropic community who have generously come together in support of the Studio Towers Renovation Project so far. As we enter the final stretch of the campaign, I invite the participation of all who care about Carnegie Hall and about music.

As we all work together to build the Carnegie Hall of the future—from the physical facilities to the innovative programs that will bring them to life—we are safeguarding Carnegie Hall's position at the center of the world's cultural stage, where it will continue to stand as a global symbol of excellence, as well as a driving force in the city's economy. Even more importantly, we are ensuring that the world's greatest music will enrich the lives of more and more people in New York and around the world. Thank you for your commitment to Carnegie Hall and for the pivotal role you play in this important work.

Sincerely,

Sanford I. Weill
Chairman of the Board

From the Executive and Artistic Director



Peter Murphy

Dear Friends,

More than 120 years after it first opened, Carnegie Hall continues to be the aspirational destination for the world's greatest artists and ensembles, a place where the best in musical performance and a commitment to our long-established international standard for artistic excellence remain at the heart of everything that we do.

The 2011–2012 season featured an incredible lineup of artists and exemplary music making across all musical genres, beginning with five terrific concerts by Valery Gergiev and the Mariinsky Orchestra that anchored both the Hall's extended 120th anniversary celebration and an in-depth focus on Tchaikovsky, the composer's influence on St. Petersburg, and the era in which Carnegie Hall was born. With *American Mavericks*, led by Michael Tilson Thomas and presented in partnership with the San Francisco Symphony, we explored the worlds of trailblazing American composers and artists with two weeks of performances and events across New York City. Among the approximately 180 wonderful concerts last season, we enjoyed a highly personal *Perspectives* series curated by pianist András Schiff; our first *Perspectives* that focused on early music with an acclaimed series created by L'Arpeggiata and its

artistic director, Christina Pluhar; and concerts that showcased the evocative music of Finnish composer Kaija Saariaho, holder of Carnegie Hall's Richard and Barbara Debs Composer's Chair. In addition, more than a dozen concerts reached beyond the walls of Carnegie Hall to listeners around the world, thanks to the inaugural year of the *Carnegie Hall Live* broadcast and digital series, presented in partnership with WQXR and American Public Media.

Building on our history of great performances—through partnerships with leading cultural institutions, development of meaningful education and community programs that reach an increasing number of people worldwide, the power of technology, and the ongoing evolution of our building through the Studio Towers Renovation Project—we continue to re-imagine what Carnegie Hall can mean for the 21st century. We want to ensure that the Hall is always a dynamic, living place, one that makes an ever-growing contribution to music and people's lives through music for the next 120 years and beyond. Our focus is on creating programs that encourage audiences to explore and expand their artistic horizons. We seek to inspire people by tapping into the aspirational ideals of Carnegie Hall itself as we work toward our goal of making great music accessible to as many people as possible, from all walks of life.

Through the comprehensive music education and community programs of the Weill Music Institute (WMI), Carnegie Hall is creatively serving a broader range of people than ever before by expanding upon initiatives—and inventing new ones—that are active locally, nationally, and around the globe. Extensive programs reached students and residents in all five boroughs of New York City last season. In addition, WMI made free curriculum and education materials available to more than 40 orchestras in the US and Canada through its Link Up program, helping them to connect with elementary schools in their respective local communities, only one example of WMI's growing emphasis on serving as a significant resource to the arts field by freely sharing tools and knowledge. Augmenting WMI's ongoing commitment to young artist training, Carnegie Hall also announced a new major project last January: the National Youth Orchestra of the United States of America (NYO-USA), an ensemble that will invite the most talented young players from across the US to gather for the first time in summer 2013 for two intensive weeks of memorable music making and the opportunity to serve as musical ambassadors for their country as part of an international tour. The NYO-USA will meet annually, with visits to different countries taking place each year.

The Academy—a program of Carnegie Hall, The Juilliard School, and the Weill Music Institute in partnership with the New York City Department of Education—is going strong, capping its fifth year in 2011–2012 with 20 Academy fellows completing two years of top-level performances and professional training. With the number of musicians who have completed The Academy program now increasing, it's been exciting during the past season to see more and more Academy alumni making their mark, developing specially designed artist residencies, locally and internationally, and creating accomplished careers as top-quality performers, innovative programmers, and dedicated teachers fully engaged with their communities.

As the world continues to navigate through tough economic times, it is a huge testament to the work of Carnegie Hall's extended family—artists, concertgoers, trustees, supporters, volunteers, and staff—that the Hall continues not only to move ahead but to thrive, even in these recessionary times. Thank you for your ongoing support. Looking ahead with great optimism to big milestone occasions on the horizon—including the unveiling of our renovated Studio Towers renovations in 2014—it is truly inspiring to think of all we can continue to achieve together.

With all best wishes,

A handwritten signature in black ink, appearing to read "Clive Gillinson".

Clive Gillinson
Executive and Artistic Director



From left to right:

Row 1: Marilyn Horne, Sanford I. Weill, Marina Kellen French, Ann Ziff, Clive Gillinson

Row 2: Oscar de la Renta, Renée Fleming, Judy Francis Zankel, Norton Belknap, Judith W. Evnin, Mayor's Representative Allison Jaffin, Linda J. Wachner

Row 3: Mrs. Julio Mario Santo Domingo, Robert K. Kraft, Anne M. Finucane, Thomas G. Maheras, Edward C. Forst, Peter W. May, Robert W. Jones, Susan W. Rose

Row 4: Kenneth J. Bialkin, Stanley S. Shuman, Robert I. Lipp, Burton P. Resnick, John W. Zick, Kurt G. Strovink

Row 5: Laura H. Pomerantz, Dennis M. Nally, Ronald E. Blaylock, Terry J. Lundgren, Trustee Fellow Robert F. Arning, A. J. C. Smith

Missing from photo: Trustees Martina Arroyo, Emanuel Ax, Mercedes T. Bass, Clarissa Alcock Bronfman, Nicola Bulgari, Yoko Nagae Ceschina, Richard A. Debs, Gregory T. Durant, The Honorable Roy M. Goodman, Stephen R. Howe Jr., Frederick J. Iseman, Klaus Jacobs, Gilbert Kaplan, Mark E. Kingdon, Sallie L. Krawcheck, Lang Lang, Yo-Yo Ma, Audra McDonald, Harold McGraw III, Lester S. Morse Jr., Joshua L. Nash, Frank N. Newman, Jessye Norman, William G. Parrett, Ronald O. Perelman, Judith Rodin, William D. Rondina, Suki Sandler, Thomas P. Sculco M.D., Henry T. Segerstrom, Sir Howard Stringer, S. Donald Sussman, James Taylor, Lawrence A. Weinbach, James D. Wolfensohn; Advisory Directors Dame Vivien Duffield, Sherry Liu; Ex Officio Trustees Mayor Michael R. Bloomberg, City Council Speaker Christine C. Quinn, Manhattan Borough President Scott M. Stringer, Department of Cultural Affairs Commissioner Kate D. Levin; Honorary Trustees Ralph M. Baruch, Pierre Boulez, Bella L. Linden, Roberta Peters, The Honorable Felix G. Rohatyn, George T. Wein

Board of Trustees

Officers

Sanford I. Weill, *Chairman*
 Mercedes T. Bass, *Vice Chairman*
 Clarissa Alcock Bronfman, *Vice Chairman*
 Klaus Jacobs, *Vice Chairman*
 Peter W. May, *Vice Chairman*
 Ronald O. Perelman, *Vice Chairman*
 Burton P. Resnick, *Vice Chairman*
 Kenneth J. Bialkin, *Secretary*
 Edward C. Forst, *Treasurer*
 Clive Gillinson,
Executive and Artistic Director

Chairmen Emeriti

Richard A. Debs
 James D. Wolfensohn

Trustees

Martina Arroyo
 Emanuel Ax
 Mercedes T. Bass
 Norton Belknap
 Kenneth J. Bialkin
 Ronald E. Blaylock
 Clarissa Alcock Bronfman
 Nicola Bulgari
 Yoko Nagae Ceschina
 Richard A. Debs
 Gregory T. Durant
 Judith W. Evnin
 Anne M. Finucane
 Renée Fleming
 Edward C. Forst
 Marina Kellen French
 Clive Gillinson
 The Honorable Roy M. Goodman
 Marilyn Horne

Stephen R. Howe Jr.
 Frederick J. Iseman
 Klaus Jacobs
 Robert W. Jones
 Gilbert Kaplan
 Mark E. Kingdon
 Robert K. Kraft
 Sallie L. Krawcheck
 Lang Lang
 Robert I. Lipp
 Terry J. Lundgren
 Yo-Yo Ma
 Thomas G. Maheras
 Peter W. May
 Audra McDonald
 Harold McGraw III
 Lester S. Morse Jr.
 Dennis M. Nally
 Joshua L. Nash
 Frank N. Newman
 Jessye Norman
 William G. Parrett
 Ronald O. Perelman
 Laura H. Pomerantz
 Oscar de la Renta
 Burton P. Resnick
 Judith Rodin
 William D. Rondina
 Susan W. Rose
 Suki Sandler
 Mrs. Julio Mario Santo Domingo
 Thomas P. Sculco M.D.
 Henry T. Segerstrom
 Stanley S. Shuman
 A. J. C. Smith
 Sir Howard Stringer

Kurt G. Strovink
 S. Donald Sussman
 James Taylor
 Linda J. Wachner
 Sanford I. Weill
 Lawrence A. Weinbach
 James D. Wolfensohn
 Judy Francis Zankel
 John W. Zick
 Ann Ziff

Trustee Fellow

Robert F. Arning

Advisory Directors

Dame Vivien Duffield
 Sherry Liu

Honorary Trustees

Ralph M. Baruch
 Pierre Boulez
 Bella L. Linden
 Roberta Peters
 The Honorable Felix G. Rohatyn
 George T. Wein

Ex Officio Trustees

Michael R. Bloomberg,
Mayor of the City of New York
 Christine C. Quinn,
Speaker, New York City Council
 Scott M. Stringer,
Manhattan Borough President
 Kate D. Levin,
*Commissioner, New York City Department
 of Cultural Affairs*

As of June 30, 2012

Carnegie Hall is owned by the City of New York, and its operation is made possible, in part, by public funds provided through the New York City Department of Cultural Affairs.

2011–2012 Concert Season

A Season of Discovery, 120 Years in the Making

In 2011–2012, Carnegie Hall celebrated its 120th anniversary with a season-long exploration of the vibrant world of music and arts that flourished around the time of the Hall's birth. Throughout the year, audiences were encouraged to explore diverse musical genres offered in approximately 180 performances by some of the world's greatest artists, from Baroque to Broadway, classical to contemporary, and everything in between. While András Schiff surveyed the works of his fellow Hungarian Béla Bartók and his influence on the world, Christina Pluhar and L'Arpeggiata led audiences on an inventive journey through the evolution of Baroque music and the imaginative world of improvisation in Carnegie Hall's first-ever early music *Perspectives* series.

Audiences got to experience the sensual sound worlds of Finnish composer Kaija Saariaho, the 2011–2012 Richard and Barbara Debs Composer's Chair, through a series of concerts that featured her expansive compositions performed by top musicians from her homeland and around the globe as well as professional training workshops with the composer. Pioneers of the American sound were also spotlighted in the citywide *American Mavericks*, presented in partnership with Michael Tilson Thomas and the San Francisco Symphony, and featuring performances by the orchestra as well as an invigorating line-up of musical interpreters.

All of these concerts—and many more highlights throughout the season—reflect the energetic spirit of discovery that informed the Hall's inception and still characterizes Carnegie Hall in the 21st century.



Yo-Yo Ma with Valery Gergiev and the Mariinsky Orchestra
at Carnegie Hall's Opening Night Gala | October 5

A Golden Age of Music

Much of the breathtaking music featured this season was created around the turn of the 20th century in the astonishing era that gave birth to Carnegie Hall. In addition to an expansive tribute to Pyotr Ilyich Tchaikovsky, who performed at the Hall's very first Opening Night, fall performances and events also explored the Russian composer's influence on St. Petersburg with a series of concerts, anchored by legendary conductor Valery Gergiev and the Mariinsky Orchestra, that included a complete Tchaikovsky symphony cycle as well as works by musical successors. Carnegie Hall also showcased orchestral masterpieces from this Golden Age of music and demonstrated their impact on other art forms—not only on the three stages at 57th Street and Seventh Avenue, but also in partner events across New York City and through Carnegie Hall's first-ever downloadable app for smartphones, which enabled users to take part in a special walking tour that traced Tchaikovsky's steps as he explored the Big Apple on his historic 1891 visit.

October

Wednesday, October 5 at 7 PM | Stern/Perelman
Carnegie Hall's Opening Night Gala
 Mariinsky Orchestra
 Valery Gergiev, Music Director and Conductor
 Yo-Yo Ma, Cello

Thursday, October 6 at 8 PM | Stern/Perelman
Mariinsky Orchestra
 Valery Gergiev, Music Director and Conductor

Sunday, October 9 at 2 PM | Stern/Perelman
Mariinsky Orchestra
 Valery Gergiev, Music Director and Conductor

Monday, October 10 at 8 PM | Stern/Perelman
Mariinsky Orchestra
 Valery Gergiev, Music Director and Conductor

Tuesday, October 11 at 8 PM | Stern/Perelman
Mariinsky Orchestra
 Valery Gergiev, Music Director and Conductor
 Daniil Trifonov, Piano

Friday, October 14 at 7:30 PM | Zankel
American Composers Orchestra
 George Manahan, Music Director and Conductor
 Mellissa Hughes, Soprano and Electronics
 Daniel Iglesia, Videographer
 Kenji Bunch, Amplified Viola

Friday, October 14 at 8 PM | Stern/Perelman
The New York Pops
 Jack Everly, Guest Conductor
 Ashley Brown, Guest Artist | Tony DeSare, Guest Artist
 James T. Lane, Guest Artist | Hugh Panaro, Guest Artist
 NaTasha Yvette Williams, Guest Artist

Saturday, October 15 at 1 PM | Weill
Discovery Day: Tchaikovsky in St. Petersburg
 Richard Wortman, Keynote Speaker
 Andrei Bondarenko, Baritone | Gary Matthewman, Piano
 Tarik Amar, Speaker | Katerina Clark, Speaker
 Laura Engelstein, Speaker | Timothy M. Frye, Speaker
 Boris Gasparov, Speaker | Lynn Garafola, Speaker
 Simon Morrison, Speaker | Elizabeth Kridl Valkenier, Speaker
 John Malmstad, Moderator and Speaker
 Catharine Nepomnyashchy, Moderator
 Maya Pritsker, Moderator

Saturday, October 15 at 10 PM | Zankel
Aurelio Martinez

Sunday, October 16 at 3 PM | Stern/Perelman
The MET Orchestra
 Fabio Luisi, Principal Conductor
 Richard Goode, Piano
 Christine Rice, Mezzo-Soprano

Wednesday, October 19 at 8 PM | Stern/Perelman
Goran Bregovic & His Wedding and Funeral Orchestra

Thursday, October 20 at 7:30 PM | Zankel
The English Concert
 Harry Bicket, Director, Harpsichord, and Organ
 Andreas Scholl, Countertenor

Thursday, October 20 at 8 PM | Stern/Perelman
Yuja Wang, Piano

Friday, October 21 at 7:30 PM | Weill
Layla Claire, Soprano
Natalia Katjukova, Piano

Saturday, October 22 at 7:30 PM | Weill
Miloš, Guitar

Saturday, October 22 at 8 PM | Stern/Perelman
Audra McDonald
 Ted Sperling, Conductor

Tuesday, October 25 at 7:30 PM | Weill
Ensemble ACJW



Goran Bregovic & His Wedding and Funeral Orchestra | October 19



Yuja Wang | October 20



Audra McDonald | October 22



Valery Gergiev and the Mariinsky Orchestra | October 11

Steve J. Sherman



Brooklyn Rider | October 31

Tuesday, October 25 at 8 PM | Stern/Perelman

The Philadelphia Orchestra

Charles Dutoit, Chief Conductor
Lang Lang, Piano

Wednesday, October 26 at 7:30 PM | Zankel

Standard Time with Michael Feinstein

Michael Feinstein, Artistic Director
Monica Mancini, Karen Mason, and Aaron Weinstein,
Special Guests
With pianists Christopher Denny and Mamiko Kitaura

Thursday, October 27 at 8 PM | Stern/Perelman

Minnesota Orchestra

Osmo Vänskä, Music Director and Conductor
Stephen Hough, Piano

Friday, October 28 at 7:30 PM | Stern/Perelman

Budapest Festival Orchestra

Iván Fischer, Music Director and Conductor
András Schiff, Piano

Friday, October 28 at 7:30 PM | Weill

Cuarteto Casals

Friday, October 28 at 10 PM | Zankel

Joe Lovano Us Five

Joe Lovano, Tenor and Soprano Saxophones
James Weidman, Piano
Esperanza Spalding, Bass
Francisco Mela, Drums
Otis Brown III, Drums

Saturday, October 29 at 8 PM | Stern/Perelman

Budapest Festival Orchestra

Iván Fischer, Music Director and Conductor
András Schiff, Piano

Monday, October 31 at 7:30 PM | Zankel

Brooklyn Rider

with Christopher Tignor, Electronics

Monday, October 31 at 8 PM | Stern/Perelman

András Schiff, Piano

The World's Greatest Artists. Revealed.

When asked to be a 2011–2012 *Perspectives* artist, pianist András Schiff was adamant that his season-long residency focus on his countryman Béla Bartók's vibrant legacy as well as musical reflections of Schiff and Bartók's native Hungary. Schiff curated a diverse series of concerts from recitals and orchestral to folk music, performed by the pianist and special guests from his homeland that included Iván Fischer and the Budapest Festival Orchestra, pianist Dénes Várjon, and folk group Muzsikás. He also collaborated with the Salzburg Marionette Theater and with young pianists who took part in a Professional Training Workshop presented by the Weill Music Institute.

On their highly creative four-concert *Perspectives* series, Christina Pluhar and L'Arpeggiata combined Corsican folk music with sacred Italian music, explored the many sides of the tarantella, and revived the Spanish and Neapolitan Baroque tradition, all to find the connecting threads that tie together the music from these varying regions and time periods. Whether it was audiences in the concert hall or young musicians in a series of master classes, all who took part in this residency witnessed the inventive collective's commitment to tracing the music that forms the core of its repertoire from the 17th century, tying it through contemporary influences to the musical world we inhabit today.

András Schiff with Iván Fischer and the Budapest Festival Orchestra
October 28



Nobuyuki Tsujii | November 10



Cheyenne Jackson with Steven Reineke and The New York Pops | November 18

November

Thursday, November 3 at 7:30 PM | Zankel
Juho Pohjonen, Piano

Friday, November 4 at 8 PM | Stern/Perelman
Sweet Honey In The Rock

Friday, November 4 at 10 PM | Zankel
Bill Frisell / Bill Morrison
The Great Flood
 Bill Frisell, Guitar | Ron Miles, Trumpet
 Tony Scherr, Bass | Kenny Wollesen, Drums

Saturday, November 5 at 7:30 PM | Stern/Perelman
Atlanta Symphony Orchestra
 Robert Spano, Music Director and Conductor
 Garrick Ohlsson, Piano

Saturday, November 5 at 9 PM | Zankel
Bang on a Can All-Stars
 Ashley Bathgate, Cello | Robert Black, Bass
 Vicky Chow, Piano | David Cossin, Percussion
 Derek Johnson, Electric Guitar
 Evan Ziporyn, Clarinets and Alto Saxophone

Tuesday, November 8 at 7:30 PM | Zankel
Leonidas Kavakos, Violin
Enrico Pace, Piano

Thursday, November 10 at 8 PM | Stern/Perelman
Nobuyuki Tsujii, Piano

Friday, November 11 at 10 PM | Zankel
Joseph Arthur

Saturday, November 12 at 7:30 PM | Zankel
Angelika Kirchschrager, Mezzo-Soprano
Jean-Yves Thibaudet, Piano

Monday, November 14 at 8 PM | Stern/Perelman
Joshua Bell, Violin
Sam Haywood, Piano

Tuesday, November 15 at 7:30 PM | Weill
The Theatre of Early Music
 Daniel Taylor, Conductor and Countertenor
 Deborah York, Soprano

Wednesday, November 16 at 8 PM | Stern/Perelman
Orchestre Révolutionnaire et Romantique
 Sir John Eliot Gardiner, Artistic Director and Conductor

Thursday, November 17 at 8 PM | Stern/Perelman
Orchestre Révolutionnaire et Romantique
 Sir John Eliot Gardiner, Artistic Director and Conductor

Friday, November 18 at 7:30 PM | Zankel
Tafelmusik Baroque Orchestra
 Jeanne Lamon, Music Director

Friday, November 18 at 7:30 PM | Weill
Marie-Elisabeth Hecker, Cello
Martin Helmchen, Piano

Friday, November 18 at 8 PM | Stern/Perelman
The New York Pops
 Steven Reineke, Music Director and Conductor
 Cheyenne Jackson, Guest Artist

The Beatles Hidden Gallery

A special fall exhibition in Zankel Hall's lobby spaces celebrated Carnegie Hall's illustrious history by highlighting historic performances by The Beatles in 1964. The exhibit included more than 30 recently discovered candid images of the seminal rock group captured by British photographer and award-winning cinematographer Paul Berriff. These intimate photographs—shot in 1963 and 1964 around the time of the group's first tour of the United States, which included two landmark performances at Carnegie Hall—showcase the young band on the cusp of superstardom, just prior to the worldwide eruption of Beatlemania. The exhibit was accessible to ticketholders for all Zankel Hall performances as well as to the general public during several free open gallery days.



The Beatles Hidden Gallery

Saturday, November 19 at 8 PM | Stern/Perelman
Baltimore Symphony Orchestra

Marin Alsop, Music Director and Conductor
 James Robinson, Stage Director
 Caroline Dhavernas, Speaker | Ronald Guttman, Speaker
 Tamara Wilson, Soprano | Hae Ji Chang, Soprano
 Kelley O'Connor, Mezzo-Soprano
 Timothy Fallon, Tenor | Morris Robinson, Bass
 Cynthia Millar, Ondes Martenot
 Concert Artists of Baltimore Vocalists
 The Peabody-Hopkins Chorus | Edward Polochick, Director
 Morgan State University Choir | Eric Conway, Director
 Peabody Children's Chorus | Doreen Falby, Director

Saturday, November 19 at 8:30 PM | Zankel
Rhythm of Rajasthan

Lakha Khan Manganiyar, Sarangi
 Kalla Khan Manganiyar, Kamayacha and Vocals
 Kachra Khan Manganiyar, Vocals
 Faqir Khan Manganiyar, Dholak
 Shakoor Khan Langa, Khartaal, Algoza, and Morchang
 Asha Sopera, Dancer | Dhapu Devi, Dancer
 Nitin Nath Harsh, Director

Monday, November 28 at 8 PM | Stern/Perelman
Ian Bostridge, Tenor
Thomas Adès, Piano

Tuesday, November 29 at 7:30 PM | Zankel
Kalichstein-Laredo-Robinson Trio
 Michael Tree, Viola | Harold Robinson, Bass

Wednesday, November 30 at 7:30 PM | Zankel
Avanti! Chamber Orchestra
 Hannu Lintu, Conductor | Elizabeth Futral, Soprano
 Heikki Nikula, Bass Clarinet | Avanti! Quartet



Timothy Fallon with The Peabody-Hopkins Chorus, Morgan State University Choir, Peabody Children's Chorus, and the Baltimore Symphony Orchestra November 19



Ambrose Akinmusire Big Band | December 3

December

Thursday, December 1 at 7:30 PM | Zankel

Avanti! Chamber Orchestra

Hannu Lintu, Conductor
Markus Allan, Vocalist
Tuomas Hiltunen, Host

Thursday, December 1 at 7:30 PM | Weill

Ensemble ACJW

Friday, December 2 at 7:30 PM | Weill

Borromeo String Quartet

Friday, December 2 at 10 PM | Zankel

Justin Townes Earle

Amanda Shires, Fiddle
Bryn Davies, Bass

Saturday, December 3 at 10 PM | Zankel

Ambrose Akinmusire Big Band

Ambrose Akinmusire, Trumpet
Sean Jones, Trumpet
Jason Palmer, Trumpet
Josh Roseman, Trombone
Corey King, Trombone
Walter Smith III, Tenor Saxophone
Marcus Strickland, Tenor Saxophone
Tia Fuller, Alto Saxophone
Dayna Stephens, Alto Saxophone
Myron Walden, Alto Saxophone
Sullivan Fortner, Piano
Harish Raghavan, Bass
Justin Brown, Drums

Wednesday, December 7 at 8 PM | Stern/Perelman

London Philharmonic Orchestra

Vladimir Jurowski, Principal Conductor
Janine Jansen, Violin

Thursday, December 8 at 8 PM | Stern/Perelman

London Philharmonic Orchestra

Vladimir Jurowski, Principal Conductor
Emanuel Ax, Piano

Saturday, December 10 at 8 PM | Stern/Perelman

Karita Mattila, Soprano Martin Katz, Piano

Sunday, December 11 at 1 PM | Zankel

Carnegie Hall Family Concert: Celso Duarte

Celso Duarte, Musical Director, Harp, Guitarra de Son, Jarana, Charango, and Vocals
Violeta Ortega, Vocals, Jarana and Zapateado
Alfredo "Godó" Herrera, Vocals, Jarana and Quijada
Rodrigo Duarte, Electric Cello
Samuel Torres, Percussion
Russell Granet, Host

Tuesday, December 13 at 8 PM | Stern/Perelman

Christian Zacharias, Piano

Thursday, December 15 at 7:30 PM | Weill

Iestyn Davies, Countertenor Kevin Murphy, Piano

Thursday, December 15 at 8 PM | Stern/Perelman

Orchestra of St. Luke's

Robert Spano, Conductor
Susanna Phillips, Soprano
Sasha Cooke, Mezzo-Soprano
Nicholas Phan, Tenor
Joshua Hopkins, Baritone
Atlanta Symphony Orchestra Chamber Chorus
Norman Mackenzie, Director

Friday, December 16 at 7:30 PM | Zankel

Ensemble ACJW

Pablo Heras-Casado, Conductor
Isabel Leonard, Mezzo-Soprano

Friday, December 16 at 8 PM | Stern/Perelman

The New York Pops

Steven Reineke, Music Director and Conductor
John Pizzarelli, Guest Artist
Jessica Molaskey, Guest Artist
Essential Voices USA
Judith Clurman, Music Director and Conductor

Saturday, December 17 at 8 PM | Stern/Perelman

The New York Pops

Steven Reineke, Music Director and Conductor
John Pizzarelli, Guest Artist
Jessica Molaskey, Guest Artist
Essential Voices USA
Judith Clurman, Music Director and Conductor

Saturday, December 24 at 7 PM | Stern/Perelman

New York String Orchestra

Jaime Laredo, Conductor and Violin
Bella Hristova, Violin

Wednesday, December 28 at 8 PM | Stern/Perelman

New York String Orchestra

Jaime Laredo, Conductor
André Watts, Piano

Vladimir Jurowski and the London Philharmonic Orchestra
December 8

Christian Zacharias | December 13



Kevin Murphy and Iestyn Davies | December 15

January

Sunday, January 15 at 3 PM | Stern/Perelman

The MET Orchestra

Fabio Luisi, Principal Conductor | Anthony McGill, Clarinet
Stephen Williamson, Clarinet | Renée Fleming, Soprano

Monday, January 16 at 5:30 PM | Weill

The Song Continues ... Duo Recital

Megan Hart, Soprano | Elliot Madore, Baritone
Natalia Katjukova, Piano | Sun Ha Yoon, Piano

Monday, January 16 at 7:30 PM | Weill

The Song Continues ... Marilyn Horne Master Class

Laura Strickling, Soprano | Tynan Davis, Mezzo-Soprano
Tai Oney, Countertenor | Jonathan Estabrooks, Baritone
Renate Rohlfing, Piano | Jonathan Ware, Piano

Tuesday, January 17 at 7:30 PM | Zankel

The Song Continues ... Renée Fleming Master Class

Dušica Bijelić, Soprano | Melissa Shippen Burrows, Soprano
Nathalie Mittelbach, Mezzo-Soprano | Marco Stefani, Tenor
Brent Funderburk, Piano | Saule Tlenchiyeva, Piano

Wednesday, January 18 at 5:30 PM | Weill

The Song Continues ... Duo Recital

Mireille Asselin, Soprano | José Rubio, Baritone | Bryan Wagorn, Piano

Wednesday, January 18 at 7:30 PM | Weill

The Song Continues ... Graham Johnson Master Class

Lilla Heinrich Szász, Soprano | Pamela Teed, Soprano
Zach Finkelstein, Tenor | Jeffrey Goble, Baritone
Tyler Wottrich, Piano | Maureen Zoltek, Piano

Thursday, January 19 at 7:30 PM | Zankel

The Song Continues ... Annual Recital

Emalie Savoy, Soprano | Sasha Cooke, Mezzo-Soprano
Dimitri Pittas, Tenor | Joshua Hopkins, Baritone
Nathan Brandwein, Piano | Justina Lee, Piano
Jerad Mosbey, Piano | Brian Zeger, Piano
Special Guest Artists
Joyce DiDonato, Mezzo-Soprano
Warren Jones, Piano

Sunday, January 22 at 1 PM | Zankel

Carnegie Hall Family Concert: Ensemble ACJW

Julietta Curenton, Flute | Alicia Lee, Clarinet
Greg DeTurck, Piano | Anna Elashvili, Violin
Saeunn Thorsteinsdottir, Cello | Charlotte Blake Alston, Host

Friday, January 27 at 6 PM | Zankel

Making Music: David Lang

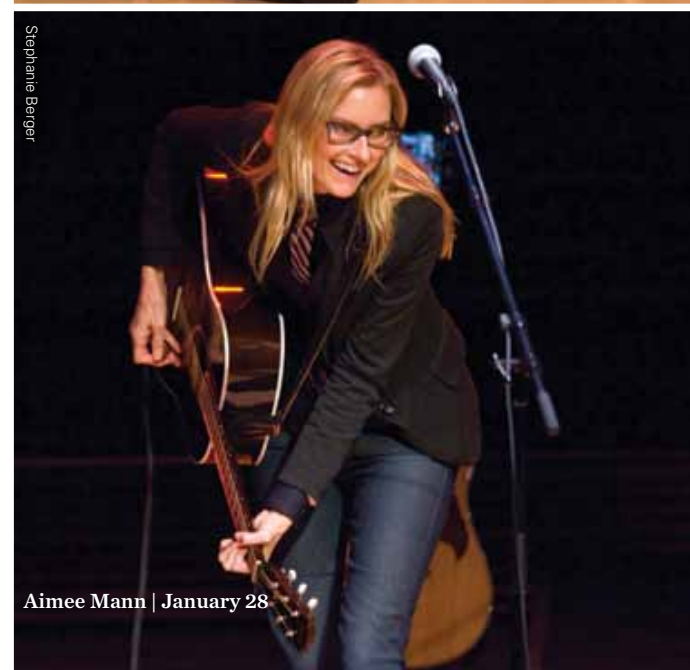
Commentary by David Lang | Theatre of Voices
Shara Worden, Vocals | Bryce Dessner, Guitar
Owen Pallett, Vocals and Violin | Nico Muhly, Keyboards
Jeremy Geffen, Series Moderator



Renée Fleming with Fabio Luisi and The MET Orchestra
January 15



Jeremy Geffen and David Lang | January 27



Aimee Mann | January 28

Saturday, January 28 at 10 PM | Zankel

Aimee Mann

Tuesday, January 31 at 8 PM | Stern/Perelman

American Composers Orchestra

Dennis Russell Davies, Conductor Laureate
Maki Namekawa, Piano

February

Wednesday, February 1 at 8 PM | Stern/Perelman

Susan Graham, Mezzo-Soprano

Malcolm Martineau, Piano

Thursday, February 2 at 7:30 PM | Zankel

Europa Galante

Fabio Biondi, Violinist and Director
Vivica Genaux, Mezzo-Soprano

Friday, February 3 at 10 PM | Zankel

Ben Allison, Bass

Michael Blake, Tenor Saxophone and Clarinet
Steve Cardenas, Guitar | Rudy Royston, Drums
Brandon Seabrook, Guitar and Banjo
Rogerio Boccato, Percussion | Joey Arias, Vocals

Sunday, February 5 at 3 PM | Stern/Perelman

The Carmina Burana Choral Project

Orchestra of St. Luke's | David Robertson, Conductor
Celena Shafer, Soprano | Lawrence Brownlee, Tenor
David Adam Moore, Baritone | Joe Miller, Choral Preparer
Leslie Stifelman, Music Supervisor
Dianne Berkun, Choral Preparer
S. Katy Tucker, Video and Projection Design
Nicole Pearce, Lighting Design | Brooklyn High School of the Arts
Brooklyn Technical High School | Fordham High School for the Arts
Forest Hills High School | Fort Hamilton High School
Frank Sinatra School of the Arts | Mark Twain I.S. 239 for the Gifted
& Talented | Scarsdale High School | Songs of Solomon



JAY Z performing at a benefit concert for the United Way of New York City and the Shawn Carter Scholarship Foundation
in Stern Auditorium / Perelman Stage | February 6

Wednesday, February 8 at 7:30 PM | Zankel
Fretwork

Thursday, February 9 at 8 PM | Stern/Perelman
A Tribute to the Music of Motown

Boyz II Men | Dionne Warwick | Paul Shaffer
Martha Reeves | BeBe Winans | Melba Moore
Kindred the Family Soul
Soledad O'Brien, Host
Ray Chew, Musical Director

Tuesday, February 14 at 7:30 PM | Weill
Ensemble ACJW
Gabriel Ebert, Narrator

Tuesday, February 14 at 8 PM | Stern/Perelman
The Philadelphia Orchestra
Charles Dutoit, Chief Conductor
James Ehnes, Violin

Wednesday, February 15 at 8 PM | Stern/Perelman
Leif Ove Andsnes, Piano

Thursday, February 16 at 7:30 PM | Weill
Brentano String Quartet

Thursday, February 16 at 8 PM | Stern/Perelman
Orchestra of St. Luke's
Sir Roger Norrington, Conductor
Jeremy Denk, Piano

Saturday, February 18 at 8 PM | Zankel
Transient Glory

Young People's Chorus of New York City
Francisco J. Núñez, Artistic Director and Founder
John Schaefer, Host | JACK Quartet
Courtenay Budd, Soprano | Jon Holden, Piano
Jacqueline Kerrod, Harp | Chris Thompson, Percussion
Ana Alvarez, Conductor | Karen Cooksey, Conductor
Jennah Delp, Conductor | Dominick DiOrio, Conductor
Grant Gershon, Conductor | Rebecca Lord, Conductor
Stephanie Mowery, Conductor | Tian Hui Ng, Conductor
Troy David Robertson, Conductor
Interviews with John Corigliano | Doug Cuomo

Sunday, February 19 at 7:30 PM | Weill
András Schiff Master Class
Alexandra Dariescu, Piano | Zoltán Fejérvári, Piano
Yuval Gilad, Piano | Naomi Kudo, Piano
Roman Rabinovich, Piano

Tuesday, February 21 at 7:30 PM | Zankel
Eric Owens, Bass-Baritone
Robert Spano, Piano

Tuesday, February 21 at 7:30 PM | Weill
András Schiff Young Artists Concert
Alexandra Dariescu, Piano | Zoltán Fejérvári, Piano
Yuval Gilad, Piano | Naomi Kudo, Piano
Roman Rabinovich, Piano



Bernarda Fink and Camilla Tilling with Sir Simon Rattle and the Berliner Philharmoniker | February 25

Wednesday, February 22 at 7:30 PM | Zankel
Muzsikás

Mihály Sipos, Violin
László Porteleki, Violin, Koboz, and Tambura
Péter Éri, Viola, Kontra, Mandolin, and Flutes
Dániel Hamar, Contrabass, Gardon, and Turkish Drum
Mária Petrás, Guest Vocalist
with András Schiff, Piano

Thursday, February 23 at 8 PM | Stern/Perelman
Berliner Philharmoniker
Sir Simon Rattle, Music Director and Conductor

Friday, February 24 at 7:30 PM | Weill
Erin Morley, Soprano
Vlad Iftinca, Piano

Friday, February 24 at 8 PM | Stern/Perelman
Berliner Philharmoniker
Sir Simon Rattle, Music Director and Conductor

Saturday, February 25 at 7:30 PM | Zankel
András Schiff, Piano
Dénes Várjon, Piano
James Michael Deitz, Percussion
David Skidmore, Percussion

Saturday, February 25 at 8 PM | Stern/Perelman
Berliner Philharmoniker

Sir Simon Rattle, Music Director and Conductor
Camilla Tilling, Soprano
Bernarda Fink, Mezzo-Soprano
Westminster Symphonic Choir
Joe Miller, Conductor

Monday, February 27 at 7:30 PM | Zankel
Simon Trpčeski, Piano

Tuesday, February 28 at 7:30 PM | Zankel
Kronos Quartet
With Special Guest Joan Jeanrenaud, Cello

Wednesday, February 29 at 7:30 PM
Standard Time with Michael Feinstein
Michael Feinstein, Artistic Director
With Special Guests
Kate Baldwin
Adam Swanson
With pianist Rob Berman



Boyz II Men in *A Tribute to the Music of Motown* | February 9



Lorin Maazel and the Vienna Philharmonic Orchestra | March 2

Jennifer Taylor

March

Friday, March 2 at 8 PM | Stern/Perelman
Vienna Philharmonic Orchestra
 Lorin Maazel, Conductor

Saturday, March 3 at 1 PM | Zankel
Family Sing: Songs of Solomon
 Chantel R. Wright, Conductor
 Thomas Cabaniss, Host

Saturday, March 3 at 8 PM | Stern/Perelman
Vienna Philharmonic Orchestra
 Lorin Maazel, Conductor

Sunday, March 4 at 2 PM | Stern/Perelman
Vienna Philharmonic Orchestra
 Lorin Maazel, Conductor

Monday, March 5 at 6 PM | Zankel
Making Music: Kaija Saariaho
 Commentary by Kaija Saariaho
 Solistes XXI, Vocal Ensemble | Rachid Safir, Director
 Jean-Baptiste Barrière, Video Artist
 Jeremy Geffen, Series Moderator

Tuesday, March 6 at 8 PM | Stern/Perelman
Boston Symphony Orchestra
 John Oliver, Conductor | Christine Brewer, Soprano
 Michelle DeYoung, Mezzo-Soprano | Simon O'Neill, Tenor
 Eric Owens, Bass-Baritone | Tanglewood Festival Chorus

Wednesday, March 7 at 8 PM | Stern/Perelman
Boston Symphony Orchestra
 Christoph Eschenbach, Conductor | Cédric Tiberghien, Piano

Thursday, March 8 at 8 PM | Stern/Perelman
Boston Pops
 Keith Lockhart, Conductor | Time for Three
 Thomas Martin, Clarinet

Friday, March 9 at 7:30 PM | Stern/Perelman
Boston Symphony Orchestra
 Stéphane Denève, Conductor | Peter Serkin, Piano

Friday, March 9 at 7:30 PM | Weill
Kaija Saariaho and Anssi Karttunen Master Class
 Aisha Orazbayeva, Violin | Sarah Saviet, Violin
 Emily Deans, Viola | Anna Pelczer, Viola
 Paul Dwyer, Cello | Mira Luxion, Cello | Tony Flynt, Bass

Friday, March 9 at 10 PM | Zankel
Gretchen Parlato, Vocals
Lionel Loueke, Guitar and Vocals
 With Special Guest
 Becca Stevens, Vocals, Ukulele, Guitar, Charango,
 and African Harp

Saturday, March 10 at 8 PM | Stern/Perelman
St. Louis Symphony
 David Robertson, Music Director and Conductor
 Karita Mattila, Soprano

Monday, March 12 at 7:30 PM | Zankel
Kaija Saariaho and Anssi Karttunen
Young Artists Concert
 Aisha Orazbayeva, Violin | Sarah Saviet, Violin
 Emily Deans, Viola | Anna Pelczer, Viola
 Paul Dwyer, Cello | Mira Luxion, Cello | Tony Flynt, Bass
 Composers: Jenny Beck | Louis Chiappetta | Edmund Finnis
 Ursula Kwong-Brown | Anna Pidgorna | Chris Williams

Tuesday, March 13 at 7:30 PM | Weill
Morgenstern Trio

Wednesday, March 14 at 7:30 PM | Zankel
L'Arpeggiata
 Christina Pluhar, Artistic Director and Theorbo
 Gianluigi Trovesi, Clarinet | Lucilla Galeazzi, Vocalist
 Luciana Mancini, Vocalist | Vincenzo Capezzuto, Vocalist
 Raquel Andueza, Soprano

Thursday, March 15 at 7:30 PM | Zankel
L'Arpeggiata
 Christina Pluhar, Artistic Director and Theorbo
 Ensemble Barbara Furtuna | Lucilla Galeazzi, Vocalist
 Raquel Andueza, Soprano

Friday, March 16 at 7:30 PM | Zankel
L'Arpeggiata
 Christina Pluhar, Artistic Director and Theorbo
 Lucilla Galeazzi, Vocalist

Expanding Sonic Frontiers

Hailed by critics as one of the most original compositional voices of our time, Richard and Barbara Debs Composer's Chair Kaija Saariaho has deservedly earned acclaim for her deeply affecting works. With performances by some of the finest artists from her native Finland—including soprano Karita Mattila and the Avanti! Chamber Orchestra—as well as Solistes XXI, the St. Louis Symphony, and The Cleveland Orchestra, Saariaho revealed the variety and nuances found in her orchestral, vocal, and choral works, while also introducing Carnegie Hall audiences to music by other composers whom she admires. Her residency also included a Professional Training Workshop with Finnish cellist Anssi Karttunen that explored compositional techniques for solo strings.



Making Music: Kaija Saariaho | March 5

Julien Jourdes



L'Arpeggiata | March 15

Julien Jourdes

Karita Mattila performing Kaija Saariaho's *Quatre Instants* with David Robertson and the St. Louis Symphony | March 10

Steve J. Sherman



The Chieftains with Paddy Moloney | March 17

Friday, March 16 at 8 PM | Stern/Perelman
The New York Pops

Steven Reineke, Music Director and Conductor
 Patti Austin, Vocalist
 Christopher Riddle, Guest Conductor

Saturday, March 17 at 7:30 PM | Weill
L'Arpeggiata

Christina Pluhar, Artistic Director and Theorbo

Saturday, March 17 at 8 PM | Stern/Perelman
The Chieftains with Paddy Moloney
 With Special Guest The Low Anthem

Sunday, March 18 at 7:30 PM | Zankel
Ebène Quartet

Wednesday, March 21 at 7:30 PM | Zankel
Standard Time with Michael Feinstein

Michael Feinstein, Artistic Director
 With Special Guests
 Joyce Breach | Ron Raines
 With pianists Mike Renzi and Joseph Thalken

Wednesday, March 21 at 7:30 PM | Weill
Brentano String Quartet

Thursday, March 22 at 7:30 PM | Zankel
American Composers Orchestra

George Manahan, Music Director and Conductor
 Derek Bermel, Clarinet | Judith Bettina, Soprano
 Gabriel Kahane, Piano, Guitars, and Vocals
 Amy Porter, Flute

Friday, March 23 at 7:30 PM | Stern/Perelman
Yefim Bronfman, Piano

Friday, March 23 at 7:30 PM | Weill
Elias String Quartet

Friday, March 23 at 10 PM | Zankel
Citizen Cope

Saturday, March 24 at 10 PM | Zankel
Lo Còr de la Plana

Sunday, March 25 at 2 PM | Stern/Perelman
Les Violons du Roy
La Chapelle de Québec

Bernard Labadie, Music Director and Conductor
 Ian Bostridge, Tenor | Neal Davies, Bass-Baritone
 Karina Gauvin, Soprano | Damien Guillon, Countertenor
 Nicholas Phan, Tenor
 Hanno Müller-Brachmann, Bass-Baritone

Sunday, March 25 at 7:30 PM | Zankel
Ensemble ACJW

David Robertson, Conductor | Moran Katz, Clarinet

Monday, March 26 at 7:30 PM | Zankel
So Percussion

Matmos | Dan Deacon, Electronics
 Cenk Ergün, Electronics | Beth Meyers, Viola

Tuesday, March 27 at 7:30 PM | Zankel
From the Top: The Achievers

Christopher O'Riley, Host | Lapis Quartet
 Madison Vest, Violin | Ashwin Krishna, Guitar
 Karen Baumgartner, Flute | Quinn Gomez, Piano

Tuesday, March 27 at 8 PM | Stern/Perelman
San Francisco Symphony

Michael Tilson Thomas, Music Director and Conductor
 St. Lawrence String Quartet | Joan La Barbara, Vocalist
 Meredith Monk, Vocalist | Jessye Norman, Soprano
 Jesse Stiles, Electronics | Yuval Sharon, Stage Director

Wednesday, March 28 at 8 PM | Stern/Perelman
San Francisco Symphony

Michael Tilson Thomas, Music Director and Conductor
 Emanuel Ax, Piano

Thursday, March 29 at 8:30 PM | Zankel
American Mavericks

Michael Tilson Thomas, Conductor and Host
 Members of the San Francisco Symphony
 Donato Cabrera, Conductor | Kiera Duffy, Soprano
 Paul Jacobs, Organ | Mason Bates, Electronica
 Newband
 Dean Drummond and Stefani Starin, Directors
 Young People's Chorus of New York City
 Francisco J. Núñez, Artistic Director

Friday, March 30 at 8:30 PM | Zankel
American Mavericks

Michael Tilson Thomas, Host
 Members of the San Francisco Symphony
 Jeffrey Milarsky, Conductor
 Meredith Monk & Vocal Ensemble, Vocalists
 Joan La Barbara, Vocalist
 Jeremy Denk, Piano
 Jesse Stiles, Electronics

American Mavericks

Touted by music writers as a major musical event of the New York City concert season, the revelatory *American Mavericks* series of concerts featured the work of groundbreaking composers who changed music forever, including John Cage, Steve Reich, John Adams, Meredith Monk, and more. Performances by Michael Tilson Thomas and the San Francisco Symphony—along with Jessye Norman and Emanuel Ax—formed the backbone of this momentous exploration of American music, which also featured performances by a new breed of musical interpreters including Alarm Will Sound, So Percussion, Matmos, Joan La Barbara, Jennifer Koh, Lisa Moore, JACK Quartet, and Jeremy Denk.

The two-week celebration went citywide with events at several of New York's leading cultural institutions, including free Carnegie Hall Neighborhood Concerts at Abrons Arts Center, the Brooklyn Public Library, and LaGuardia Performing Arts Center; film screenings at Anthology Film Archives; dance performances, visual art exhibits, and classes as part of the 2012 Biennial of the Whitney Museum of American Art; and concerts at (Le) Poisson Rouge and The Kitchen. In addition, Q2 Music—WQXR's online new-music station devoted to works of living composers—dedicated the entire month of March to coverage of the events, featuring playlists and programs curated by hosts with strong connections to contemporary music.



Jessye Norman with Michael Tilson Thomas and the San Francisco Symphony | March 27

April

Thursday, April 5 at 7:30 PM | Zankel
Ute Lemper
Vogler Quartet
 Stefan Malzew, Piano, Clarinet, and Accordion

Wednesday, April 11 at 8 PM | Stern/Perelman
Mitsuko Uchida, Piano

Thursday, April 12 at 8 PM | Stern/Perelman
Orchestra of St. Luke's
 Iván Fischer, Conductor | Dominique Labelle, Soprano
 Kelley O'Connor, Mezzo-Soprano
 Joseph Kaiser, Tenor | Richard Paul Fink, Baritone
 Musica Sacra | Kent Tritle, Music Director

Friday, April 13 at 7:30 PM | Zankel
Takács Quartet

Friday, April 13 at 8 PM | Stern/Perelman
The New York Pops
 Steven Reineke, Music Director and Conductor
 Essential Voices USA
 Judith Clurman, Music Director and Conductor

Saturday, April 14 at 12:30 PM and 3:30 PM
Stern/Perelman

Family Concert: The New York Pops:
Jim Henson's Musical World
 Steven Reineke, Music Director and Conductor
 John Tartaglia, Host
 Essential Voices USA
 Judith Clurman, Music Director and Conductor
 Craig Shemin, Writer | Daniel Seth, Associate Director
 Special guest appearances by
 Pam Arciero | Bill Barretta | Alison Bartlett
 Leslie Carrara-Rudolph | Kevin Clash | Stephanie D'Abruzzo
 Rachel Dratch | Dave Goelz | Eric Jacobson | Rollie Krewson
 Dr. Loretta Long | Lara MacLean | Sonia Manzano
 Bob McGrath | Alan Muraoka | Roscoe Orman | Karen Prell
 David Rudman | Nitya Vidyasagar | Matt Vogel
 Paul Williams

Saturday, April 14 at 7:30 PM | Zankel
Takács Quartet

Wednesday, April 18 at 7:30 PM | Weill
Ensemble ACJW

Wednesday, April 18 at 8 PM | Stern/Perelman
European Union Youth Orchestra
 Vladimir Ashkenazy, Music Director and Conductor
 Itzhak Perlman, Violin

Thursday, April 19 at 7:30 PM | Weill
Brentano String Quartet

Friday, April 20 at 7:30 PM | Weill
Grace Francis, Piano

Friday, April 20 at 10 PM | Zankel
Cheikh Lô



Mitsuko Uchida | April 11



The Sound of Music | April 24

Saturday, April 21 at 10 PM | Zankel
Rudresh Mahanthappa, Alto Saxophone and Laptop

David Gilmore, Electric Guitar | Rich Brown, Electric Bass
 Anantha R. Krishnan, Mridangam | Gene Lake, Drums

Tuesday, April 24 at 8 PM | Stern/Perelman
The Sound of Music

Starring
 Laura Osnes (Maria Rainer) | Tony Goldwyn (Captain Georg von Trapp) | Brooke Shields (Elsa Schraeder) | Patrick Page (Max Detweiler) | Stephanie Blythe (The Mother Abbess) | Cotter Smith (Herr Zeller) | Mary Michael Patterson (Liesl von Trapp) | Nick Spangler (Rolf Gruber) | Jake Montagnino (Friedrich von Trapp) | Olivia Knutsen (Louisa von Trapp) | Jacob Sutton (Kurt von Trapp) | Grace Lockett (Brigitta von Trapp) | Natalie Hawkins (Marta von Trapp) | Charlotte Knutsen (Gretl von Trapp) | Joy Hermalyn (Sister Berthe, Mistress of Novices) | Linda Mugleston (Sister Margareta, Mistress of Postulants) | Faith Sherman (Sister Sophia) | Reed Birney (Admiral von Schreiber) | Joel Hatch (Franz, The Butler) | Veanne Cox (Frau Schmidt, The Housekeeper) | Daniel Truhitte (Baron Elberfeld) | Daniela DiGiallonardo (Baroness Elberfeld) | Nicholas Hammond, Kym Karath, Heather Menzies (Trio of the Saengerbund of Herwegen) | Christine DiGiallonardo, Nadia DiGiallonardo, Patty Goble, Amy Justman, Kevin Munhall, and the Women of the Mansfield University Concert Choir, Peggy Dettwiler, Director (Neighbors of Captain von Trapp, Nuns, Novices, Postulants, Contestants in the Festival Concert)
 Orchestra of St. Luke's
 Women of the Mansfield University Concert Choir
 Rob Fisher, Musical Director and Conductor
 Gary Griffin, Director
 Joshua Bergasse, Choreographer

Wednesday, April 25 at 8 PM | Stern/Perelman
Richard Goode, Piano

Thursday, April 26 at 7:30 PM | Zankel
Sandrine Piau, Soprano
Susan Manoff, Piano

Friday, April 27 at 7:30 PM | Weill
Pavel Haas Quartet

Friday, April 27 at 8 PM | Stern/Perelman
The Philadelphia Orchestra
 Sir Simon Rattle, Conductor

Sunday, April 29 at 3 PM | Stern/Perelman
Garrick Ohlsson, Piano

Monday, April 30 at 7:30 PM | Zankel
Australian Chamber Orchestra
 Richard Tognetti, Artistic Director
 Dawn Upshaw, Soprano



Spring For Music: Alabama Symphony Orchestra | May 10

May

Tuesday, May 1 at 8 PM | Stern/Perelman
Matthias Goerne, Baritone
Leif Ove Andsnes, Piano

Wednesday, May 2 at 7:30 PM | Zankel
András Schiff, Piano

Wednesday, May 2 at 8 PM | Stern/Perelman
New York Philharmonic
 Alan Gilbert, Music Director and Conductor

Thursday, May 3 at 6 PM | Zankel
Making Music: Jörg Widmann
 Jörg Widmann, Clarinet | Claron McFadden, Soprano
 András Schiff, Piano | Shai Wosner, Piano
 The Parker Quartet
 Jeremy Geffen, Series Moderator

Thursday, May 3 at 8 PM | Stern/Perelman
Evgeny Kissin, Piano

Saturday, May 5 at 7:30 PM | Zankel
Salzburg Marionette Theater
András Schiff, Piano

Sunday, May 6 at 1 PM | Stern/Perelman
Family Concert: Salzburg Marionette Theater
András Schiff, Piano
 Charlotte Blake Alston, Pre-Concert Artist

Sunday, May 6 at 3 PM | Stern/Perelman
Louis Lortie, Piano

Monday, May 7 at 7:30 PM | Stern/Perelman
Spring For Music: Houston Symphony
 Hans Graf, Music Director
 Mikhail Svetlov, Bass

Tuesday, May 8 at 7:30 PM | Stern/Perelman
Spring For Music: Edmonton Symphony Orchestra
 William Eddins, Music Director | Angela Cheng, Piano
 Juliette Kang, Violin | Denise Djokic, Cello
 Jens Lindemann, Trumpet

Wednesday, May 9 at 7:30 PM | Stern/Perelman
Spring For Music: New Jersey Symphony Orchestra
 Jacques Lacombe, Music Director
 Hila Plitmann, Soprano | Marc-André Hamelin, Piano
 Men of the Westminster Symphonic Choir
 Joe Miller, Director

Thursday, May 10 at 7:30 PM | Stern/Perelman
Spring For Music: Alabama Symphony Orchestra
 Justin Brown, Music Director and Principal Conductor
 Quattro Mani

Friday, May 11 at 7:30 PM | Stern/Perelman
Spring For Music:
Milwaukee Symphony Orchestra
 Edo de Waart, Music Director
 Xiaoduo Chen, Soprano
 Meng Meng, Qingyi, and Soprano II
 Wu Man, Pipa | Hong Wang, Erhu
 Yang Yi, Zheng

Friday, May 11 at 7:30 PM | Weill
Nadine Sierra, Soprano
Carol Wong, Piano

Saturday, May 12 at 7:30 PM | Stern/Perelman
Spring For Music: Nashville Symphony
 Giancarlo Guerrero, Music Director
 Tracy Silverman, Electric Violin

Saturday, May 12 at 8 PM | Zankel
Christian Gerhaher, Baritone
András Schiff, Piano

Thursday, May 17 at 8 PM | Stern/Perelman
Emanuel Ax, Piano

Friday, May 18 at 8 PM | Stern/Perelman
The Philadelphia Orchestra
 Charles Dutoit, Chief Conductor
 Maria João Pires, Piano
 The Philadelphia Singers Chorale
 David Hayes, Director

Sunday, May 20 at 3 PM | Stern/Perelman
The MET Orchestra
 David Robertson, Conductor
 Christian Tetzlaff, Violin

Wednesday, May 23 at 8 PM | Stern/Perelman
The Cleveland Orchestra
 Franz Welser-Möst, Music Director and Conductor
 Gil Shaham, Violin

Thursday, May 24 at 8 PM | Stern/Perelman
The Cleveland Orchestra
 Franz Welser-Möst, Music Director and Conductor
 Nina Stemme, Soprano | Eric Owens, Bass-Baritone
 Rudolf Schasching, Tenor
 Jane Henschel, Mezzo-Soprano
 Garrett Sorenson, Tenor
 Jennifer Johnson Cano, Mezzo-Soprano
 Rodell Rosel, Tenor | Matthew Plenk, Tenor
 Bryan Griffin, Tenor | James Kryshak, Tenor
 Brian Keith-Johnson, Baritone
 Sam Handley, Bass-Baritone
 Darren Stokes, Bass-Baritone
 Evan Boyer, Bass

Tuesday, May 29, 2012 at 8 PM | Stern/Perelman
Lang Lang, Piano



Franz Welser-Möst, Nina Stemme, Eric Owens, and The Cleveland Orchestra | May 24



Lang Lang | May 29

Weill Music Institute

Reflecting Carnegie Hall's mission to bring great music to the widest possible audience, the Weill Music Institute (WMI) creates a broad range of dynamic music education and community programs each year as a leader in its field, serving people from all walks of life through a variety of engaging initiatives.

More than 300,000 people took part in WMI programs and online initiatives this season—in New York City, across the US, and around the world. WMI also continued to be a trailblazer in online education, reaching tens of thousands of people nationally and globally through its Musical Exchange program for young musicians and its Online Resource Center, which provides much-needed tools for educators worldwide.

Through WMI, Carnegie Hall has increasingly served a wide range of constituents across the country. The popular Link Up program provides curriculum and concert materials, as well as other resources that help to connect a growing number of orchestras across the country with schools in their communities. The Carnegie Hall Royal Conservatory Achievement Program, a set of sequenced courses and system of assessment providing a recognized national standard of musical success for people studying music privately at all levels, completed its first full year during the 2011–2012 season. Carnegie Hall also announced the creation of the National Youth Orchestra of the United States of America, which, beginning in summer 2013, will bring together America's finest young players for training, coaching, and service as dynamic international musical ambassadors for the US.



Family Sing: Songs of Solomon | March 3

School Programs

Musical Explorers (Elementary School)

Musical Explorers: My City, My Song

December 9, 12–15, 2011 | Zankel

Gaida Hinnawi, Vocalist | Tareq Abboushi, Buzuk
Zafer Tawil, Derbakeh | Celso Duarte, Harp
Violeta Ortega, Jarana | Alfredo “Godo” Herrera, Jarana
Rodrigo Duarte, Cello | Karlie Bruce, Vocalist
Jerome Jennings, Percussion | Chris Parrello, Guitar
Kevin Thomas, Bass | Shane Schag, Piano

May 7–11, 2012 | Zankel

Eva Salina Primack, Vocalist | Ariadne Greif, Soprano
Peter Stan, Accordion | Yuliyán Yordanov, Tapan
Teddy Weber, Guitar | Michael Farkas, Vocalist
Seth Travins, Bass | Emeline Michel, Vocalist
Carol Hodge, Drums | Yayoi Ikawa, Piano
Adrien Legagneur, Bass

Students in music and general classrooms discovered New York City’s diverse heritage of song.

Link Up (Elementary School)

May 22–23, 25, 2012 | Stern/Perelman

The Orchestra Sings

Orchestra of St. Luke’s | Rossen Milanov, Conductor
Thomas Cabaniss, Host | David Templeton, Vocalist
Shanna Lesniak, Vocalist | Rachel Kara Perez, Vocalist
Alvin Crawford, Vocalist | Rogerio Boccato, Percussionist
Susan Fenichell, Director
Dan Scully, Video and Projection Designer
Mary Louise Geiger, Lighting Designer
Hilary Easton, Choreographer
Rodica Gabriela Bordeianu, Choreographer and Dancer

Students in music classrooms sang, played the recorder, composed, and explored melodies from a range of colorful orchestral repertoire.



Link Up | May 25

Link Up National (Elementary School)

Acadiana Symphony Orchestra (Louisiana)
Albany Symphony Orchestra (Georgia)
Austin Symphony Orchestra (Texas)
Carnegie Hall–Lewisburg, West Virginia (West Virginia)
Dallas Symphony Orchestra (Texas)
El Paso Symphony Orchestra (Texas)
Elgin Symphony Orchestra (Illinois)
The Florida Orchestra (Florida)
Fort Wayne Philharmonic (Indiana)
Fort Worth Symphony Orchestra (Texas)
Gulf Coast Symphony (Mississippi)
Hartford Symphony Orchestra (Connecticut)
Jacksonville Symphony Orchestra (Florida)
Kansas City Symphony (Missouri)
Louisiana Philharmonic Orchestra (Louisiana)
Meridian Symphony Orchestra (Mississippi)
Mississippi Arts Commission (Mississippi)
Mississippi Symphony Orchestra (Mississippi)
Omaha Symphony (Nebraska)
Rhode Island Philharmonic Orchestra (Rhode Island)
Sacramento Philharmonic Orchestra (California)
South Arkansas Symphony Orchestra (Arkansas)
South Carolina Philharmonic (South Carolina)
Spartanburg Philharmonic Orchestra (South Carolina)
Spokane Symphony (Washington)
St. Louis Symphony (Missouri)
Tupelo Symphony Orchestra (Mississippi)
The University of Southern Mississippi Symphony Orchestra (Mississippi)
Vocal and Instrumental Teaching Artists Academy (VITA) (California)
West Michigan Symphony (Michigan)

Carnegie Hall provided free, high-quality curriculum and administrative resource materials to orchestras nationwide, helping them to connect with schools in their communities. This program allowed students to explore musical concepts through select orchestral works and compositional activities while preparing to perform along with the orchestra in an interactive culminating concert.

Perelman American Roots (Middle School)

May 2, 2012 | Harlem Stage

African American Song: Uniting Voices

Songs of Solomon

Chantel R. Wright, Director

Students in social studies and choral classrooms explored the connection of African American song to history and current events, as well as how it continues to unite people in today’s world.

Count Me In (Middle School)

Yearlong activities

Young singers in at-risk neighborhoods are given the opportunity to build basic singing skills in preparation for auditions that can connect them to further musical opportunities. This year, Count Me In helped connect 13 eighth-grade students in Brooklyn and the Bronx (87% of eligible students) to arts-focused high schools.



Count Me In—Bronx
November 5

Count Me In: A Middle Schooler Finds His Voice

Thirteen-year-old Jordan Juliano was a typical eighth-grade student at MS 57 in the Bedford-Stuyvesant section of Brooklyn. A shy kid who tended to go with the flow of his friends, he wasn’t known as an outgoing student amongst his classmates and teachers. Jordan managed to find his voice with the help of Count Me In, a new after-school choral initiative designed by the Weill Music Institute. During the fall pilot program, Count Me In served 53 students from five underserved New York City public schools, including Jordan.

Jordan studied music for the first time with sessions that focused on sight-singing, rhythm, pitch, and diction. The intensive workshop helped Jordan blossom as a vocalist, developing a three-octave range while becoming more outgoing and making connections with fellow participants. Celeste Douglass Wheeler, principal at MS 57, noticed the change. “The school community has made Jordan and the other students celebrities—these are our stars, these are our singers. Anytime anyone comes into my building, I am excited to show them what Count Me In has done for us.”

“And for my students, they are no longer just focusing on now; they are focusing on tomorrow,” she added. “They are saying to themselves, ‘If I want to be a singer or a dancer, what do I have to do now in middle school to make that happen?’” Jordan was one of those students who took full advantage of the program to prepare for performing arts high school auditions.

The preparation that Jordan received from Count Me In was instrumental to his acceptance to the Frank Sinatra School of the Arts in Astoria, Queens, where he started as a freshman in fall 2012. Jordan also continues to develop his musicianship skills by participating in Songs of Solomon, a community-based choir led by his mentor from Count Me In.

The Carmina Burana Choral Project: A Once-in-a-Lifetime Debut

When 14-year-old composer Gabe Smallwood responded to a national call from the Weill Music Institute seeking young composers to participate in its Creative Learning Project this season, he had no idea how the experience would change his musical life. Smallwood, a prodigious young man hailing from the small town of Florence, South Carolina, was selected as one of three high school composers to create new music based on themes and compositional techniques from the major work of this year's project: Carl Orff's *Carmina Burana*. The eighth-grade student, who plays the French horn and piano in community ensembles in his sleepy hometown, was also quietly composing works in his free time. "I love that music itself expresses ideas and feelings that words cannot," he said. "I compose because I have to. How can I resist a love for something that is so passionate and so alive?"

After completing his work following coachings with Weill Music Institute composers, Smallwood traveled to New York City to work with the musicians who would perform it, the outstanding Orchestra of St. Luke's under the direction of leading conductor David Roberson and a choir of 150 student singers from New York City public schools.

"Never before have I tackled the task of writing for a full orchestra and choir," he said. "It has been an amazing challenge and opportunity." Not only that, Smallwood had never heard any of his compositions performed live prior to his Carnegie Hall debut in front of a sold-out audience in Stern Auditorium / Perelman Stage. This groundbreaking moment in the budding composer's life has led to other great opportunities: He has gone on to study at the prestigious conservatory of the South Carolina Governor's School for the Arts and Humanities Discovery Program, building on the invaluable experience received from his work with Carnegie Hall's Weill Music Institute.



The Carmina Burana Choral Project | February 5

Jennifer Taylor

Creative Learning Project

February 5, 2012 | Stern/Perelman

The Carmina Burana Choral Project

Orchestra of St. Luke's | David Robertson, Conductor
Celena Shafer, Soprano | Lawrence Brownlee, Tenor
David Adam Moore, Baritone | Joe Miller, Choral Preparer
Leslie Stifelman, Music Supervisor
Dianne Berkun, Choral Preparer
S. Katy Tucker, Video and Projection Design
Nicole Pearce, Lighting Design

Choirs from

Brooklyn High School of the Arts | Brooklyn Technical High School | Fordham High School for the Arts | Forest Hills High School | Fort Hamilton High School | Frank Sinatra School of the Arts | Mark Twain I.S. 239 for the Gifted & Talented Scarsdale High School | Songs of Solomon

Approximately 250 singers from New York City high schools performed *Carmina Burana* with the Orchestra of St. Luke's conducted by David Robertson. In addition, three high school-aged composers were selected to write new works for chorus and orchestra based on the musical themes of *Carmina Burana*. These new works were premiered by 150 additional students on the first half of the program.

February 16, 2012 | (Le) Poisson Rouge

February 17, 2012 | 92nd Street Y

February 18, 2012 | Zankel

Carnegie Hall Choral Institute

Young People's Chorus of New York City
Francisco J. Núñez, Artistic Director and Founder
John Schaefer, Host | JACK Quartet
Courtenay Budd, Soprano | Jon Holden, Piano
Dov Scheindlin, Viola | Joshua Roman, Cello
Jacqueline Kerrod, Harp | Chris Thompson, Percussion
Dominick DiOrio, Conductor (Houston, Texas)
Rebecca Lord, Conductor (Los Angeles, California)
Stephanie Mowery, Conductor (Syracuse, New York)
Ana Alvarez, Conductor (Toronto, Ontario)
Karen Cooksey, Conductor, (Los Angeles, California)
Tian Hui Ng, Conductor (South Hadley Falls, Massachusetts)
Jennah Delp, Conductor (Los Gatos, California)
Troy David Robertson, Conductor (Ithaca, New York)
Janet Galván, Guest Conductor (Ithaca, New York)
Philip Brunelle, Guest Conductor (Minneapolis, Minnesota)
Elizabeth Núñez, Guest Conductor (New York, New York)
Grant Gershon, Guest Conductor (Los Angeles, California)
Interviews with and works by
John Corigliano | Douglas J. Cuomo | Joan Tower
Michael Gordon | John Corigliano | David Del Tredici
Derek Bermel | Douglas J. Cuomo | Bright Sheng
Paquito D'Rivera

The Carnegie Hall Choral Institute is an annual gathering of school choral teachers and community choir directors. This season, the institute collaborated with Francisco Nuñez and the Young People's Chorus of New York City in support of their Transient Glory initiative, which focuses on teacher training and conducting as well as performances of newly commissioned choral works for young voices.

Music Blueprint Model School (Elementary and Middle School)

Yearlong activities

PS/MS 161 Manhattan Pedro Albizu Campos
A school partnership that embraces the objectives of the New York City Department of Education's Blueprint for Teaching and Learning in the Arts

School Residency Program (Elementary and Middle School)

Yearlong activities

An ongoing collaboration between select schools and teaching artists that engages students in Carnegie Hall's school programs and creative musical work

Arts Achieve (Elementary, Middle, and High School)

Yearlong activities

A five-year partnership between New York City's leading arts institutions, the New York City Department of Education, and its public schools, Arts Achieve is designed to improve student achievement in the arts through the development and implementation of balanced arts assessments that are aligned with high student content and academic achievement standards. Carnegie Hall is the lead music partner on this project.



The Carmina Burana Choral Project | February 5

Musical Connections: Finding a Brighter Future Through Music

Having been involved in the court system for nearly five years, Andre Smith (whose name has been changed to protect his identity) had been detained at Horizon Juvenile Center, a secure detention facility for court-involved youth in the South Bronx, when he first began participating in creative projects offered by the Weill Music Institute's Musical Connections program.

At Horizon Juvenile Center, residents took part in a two-week workshop in which they wrote their own songs with the help of professional musicians from the Musical Connections roster of artists. The workshop built up to a performance for participants' families, facility staff, and other residents. Each participant also received high school credit, a professionally produced CD of the concert, and a recommendation letter in their case files and school applications that described their positive contributions and areas of growth.

Andre participated in several more workshops during his time at Horizon, allowing him to discover new aspects of himself, collaborate in positive ways with others, and develop vital leadership skills that could be used in his adult life. "I can attest to the remarkable transformation Andre has made from a rather hesitant participant to a supportive and strong leader," said Chris Marianetti of Found Sound Nation, one of the musical groups on the Musical Connections roster that mentored Andre. Along with other participants, Andre explored new, constructive ways to communicate, express himself, and relate to his family and community by developing his creative interests and talent through this workshop.

After Andre was released from detention, he kept in touch with one of his Musical Connections mentors, Ricky Nigaglioni of Found Sound Nation. Ricky has encouraged Andre to stay connected to music by joining an arts collective and performance space in their neighborhood of the South Bronx, which provides an opportunity for Andre to continue his creative interests.



Found Sound Nation at Crossroads Juvenile Center | December 9



Found Sound Nation and Falu at Crossroads Juvenile Center
December 9

Community and Family Programs

Neighborhood Concerts

In partnership with local institutions, Carnegie Hall has a 36-year tradition of bringing free concerts to neighborhoods throughout the five boroughs of New York City. Each season, some of the best musicians from throughout the city and around the world perform classical, jazz, and world music. The Neighborhood Concert Series includes five participatory Community Sings, in which audiences are invited to become part of the performance with professional choirs.

The McGraw-Hill Companies CarnegieKids

These free and interactive 45-minute concerts in all five boroughs feature songs, movement, and instrument demonstrations and create opportunities for musical creativity and play.

Musical Connections

Committed to serving people in challenging circumstances, Musical Connections provides free interactive performances, creative projects, and artist residencies in homeless shelters, correctional facilities, healthcare settings, and senior service organizations. In the 2011–2012 season, Musical Connections reached over 8,500 people with limited access to live music through programming created by Carnegie Hall in partnership with host organization staff, multiple government agencies, and first-class musicians. Professional development is an integral part of Musical Connections, and specifically designed workshops are offered to the artists to prepare them for the unique nature of this work.



Toomai String Quintet at Jacobi Medical Center
October 20



Family Concert: The New York Pops:
Jim Henson's Musical World | April 14

Family Concerts

Family Concerts continued to offer parents a wonderful way to introduce children ages 5–10 to live performances of music from around the world.

December 11, 2011 | Zankel

Celso Duarte

Celso Duarte, Musical Director, Harp, Guitarra de Son, Jarana, Charango, and Vocals
Violeta Ortega, Vocals, Jarana and Zapateado
Alfredo "Godo" Herrera, Vocals, Jarana and Quijada
Rodrigo Duarte, Electric Cello | Samuel Torres, Percussion
Russell Granet, Host

January 22, 2012 | Zankel

Ensemble ACJW

Julietta Curenton, Flute | Alicia Lee, Clarinet | Greg DeTurck, Piano
Anna Elashvili, Violin | Saeunn Thorsteinsdottir, Cello
Charlotte Blake Alston, Host

March 3, 2012 | Zankel

Family Sing: Songs of Solomon

Songs of Solomon | Chantel R. Wright, Conductor
Thomas Cabaniss, Host

April 14, 2012 | Stern/Perelman

The New York Pops: *Jim Henson's Musical World*

The New York Pops
Steven Reineke, Music Director and Conductor
John Tartaglia, Host
Essential Voices USA | Judith Clurman, Music Director and Conductor

Craig Shemin, Writer
Daniel Seth, Associate Director

Special guest appearances by
Pam Arciero | Bill Barretta | Alison Bartlett
Leslie Carrara-Rudolph | Kevin Clash | Stephanie D'Abruzzo
Rachel Dratch | Dave Goelz | Eric Jacobson | Rollie Krewson
Dr. Loretta Long | Lara MacLean | Sonia Manzano | Bob McGrath
Alan Muraoka | Roscoe Orman | Karen Prell | David Rudman
Nitya Vidyasagar | Matt Vogel | Paul Williams

May 6, 2012 | Zankel

Salzburg Marionette Theater

Andr s Schiff, Piano

Salzburg Marionette Theater | Andr s Schiff, Piano
Charlotte Blake Alston, Pre-Concert Artist

Professional Programs



András Schiff Master Class | February 19

Pete Ciochta

Professional Training Workshops

Young artists ages 18–35 explore many aspects of musical life with leading artists of our time in these intense, tuition-free workshops. Workshops often culminate in a Carnegie Hall performance, and select sessions are recorded in order to reach a broader online audience.

January 15–19, 2012

Marilyn Horne with Renée Fleming and Graham Johnson **The Song Continues: Exploring the Art of Song**

For Singers

Marilyn Horne was joined by soprano Renée Fleming and collaborative pianist Graham Johnson to lead master classes for her annual workshop and festival of song. In addition to singing in one of the master classes, participants received private coaching from Warren Jones and were invited guests for the full week of song programs.

February 16–21, 2012

András Schiff: Bach, Bartók, and Beyond

For Solo Pianists

Carnegie Hall *Perspectives* artist András Schiff led an intensive workshop that explored the piano suites of Bach and Bartók, culminating in a master class and a performance in Weill Recital Hall.

February 23–24, 2012

Berliner Philharmoniker Master Classes: Mastering Orchestral Repertoire

For Woodwind and Brass Players

Members of the world-renowned Berliner Philharmoniker led two days of master classes and panel discussions that focused on orchestral repertoire and audition strategies.

Andreas Blau, Flute | Albrecht Mayer, Oboe
Wenzel Fuchs, Clarinet | Stefan Schweigert, Bassoon
Stefan de Leval Jezierski, Horn | Gábor Tarkövi, Trumpet
Thomas Leyendecker, Trombone
Alexander von Puttkamer, Tuba

March 6–12, 2012

Kaija Saariaho with Anssi Karttunen: **New Works for Strings**

For Composers and Solo String Players (violin, viola, cello, and bass)

Kaija Saariaho, 2011–2012 holder of Carnegie Hall's Richard and Barbara Debs Composer's Chair, and Finnish cellist Anssi Karttunen led a workshop that culminated in a Zankel Hall performance of repertoire by Saariaho and new works by participating composers.



Berliner Philharmoniker Master Class | February 23

Jennifer Taylor

March 17–18, 2012

L'Arpeggiata: Baroque Master Classes

For Baroque Singers, Instrumentalists, and Ensembles

Christina Pluhar and members of the *Perspectives* ensemble L'Arpeggiata—including violinist Veronika Skuplik and cornettist Doron David Sherwin—led master classes in ensemble playing, improvisation, and 17th-century vocal techniques.

Teaching Artist Collaborative

Weill Music Institute teaching artists of diverse musical backgrounds attend professional development workshops in support of their programmatic work in school and community settings to create experiences that encourage curiosity, stimulate lifelong learning, and inspire creativity.

The Achievement Program

Launched in March 2011 by Carnegie Hall and Canada's Royal Conservatory, The Achievement Program provides a national standard for musical achievement for people of all ages studying music privately in the US, offering a sequential course of study from beginner through advanced levels. Modeled on the acclaimed examination system of The Royal Conservatory, the program was created in response to feedback from parents and teachers throughout the US who desired a top-quality, nationally recognized system to track students' musical progress and celebrate their accomplishments.

WMI Digital

Musical Exchange (Ages 13–25)

Yearlong Activities

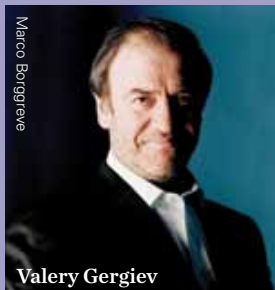
Carnegie Hall invited teens to connect with peers from around the world and share their musical performances through the Weill Music Institute's global online community. Musical Exchange focused on musical sharing and international collaboration, connecting young musicians from around the world in an online program. Participants during the 2011–2012 season included students from the US, Mexico, Tunisia, India, Indonesia, Turkey, Taiwan, the United Kingdom, Algeria, Egypt, Canada, Morocco, Australia, France, Iraq, Hungary, Germany, Portugal, and Italy. The community currently has over 1,500 members, and had 25,500 unique visitors in 2011–2012.

Online Resource Center

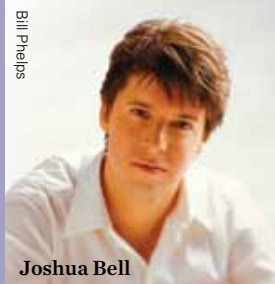
Carnegie Hall's Online Resource Center offers a rich collection of online educational materials, a multimedia library, and interactive resources from WMI programs. Designed for use by educators, young artists, and teaching artists, the Online Resource Center helps make WMI's programs broadly accessible nationally and internationally through this online digital library. The center currently holds nearly 1,000 items and has over 100,000 unique users annually.



National Youth Orchestra of the United States of America: An Exciting New Start



Valery Gergiev



Joshua Bell

In January 2012, Carnegie Hall announced the establishment of a sensational new initiative—the National Youth Orchestra of the United States of America (NYO-USA). Starting in summer 2013, NYO-USA will bring together 120 of the brightest young players from across the country to serve as dynamic international musical ambassadors. Following a comprehensive audition process and a two-week training residency with leading musicians from top American orchestras at State University of New York, Purchase College, these remarkable teenagers will embark on an international tour to Moscow, St. Petersburg, London, and Washington, DC—some of the great music capitals of the world. Internationally acclaimed conductor

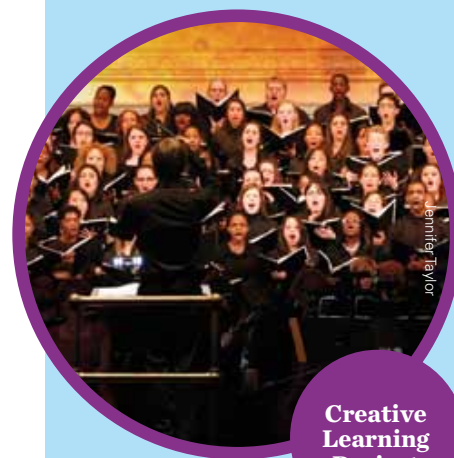
Valery Gergiev and renowned violinist Joshua Bell lead these young musicians in performances they will likely never forget.

“We are creating the National Youth Orchestra of the USA in order to offer the finest young instrumentalists nationwide the inspirational opportunity to make and share music at the highest level,” said Clive Gillinson, Carnegie Hall’s Executive and Artistic Director and former participant in a similar program in his native England. “We are confident that the tremendous talent, energy, and enthusiasm found within America’s young players will make the NYO-USA experience a remarkable one, both for participants and audiences around the world.”

This exciting new initiative has been met with praise across the country. “For many years, I have been pining for there to be a national youth orchestra in this country,” said Steven Payne, executive director of the Youth Orchestras of San Antonio (YOSA). “So many other programs will benefit from the model you are providing. The amazing young musicians you will be bringing together will provide inspiration for so many children around the country.”

Each dot on the map represents the site of a WMI program held during the 2011–2012 season.

- Musical Explorers
- Link Up
- Perelman American Roots
- Count Me In
- Creative Learning Project
- Music Blueprint Model School
- Arts Achieve
- Neighborhood Concert Series
- The McGraw-Hill Companies CarnegieKids
- Musical Connections
- Family Concerts
- Community Sings



Creative Learning Project



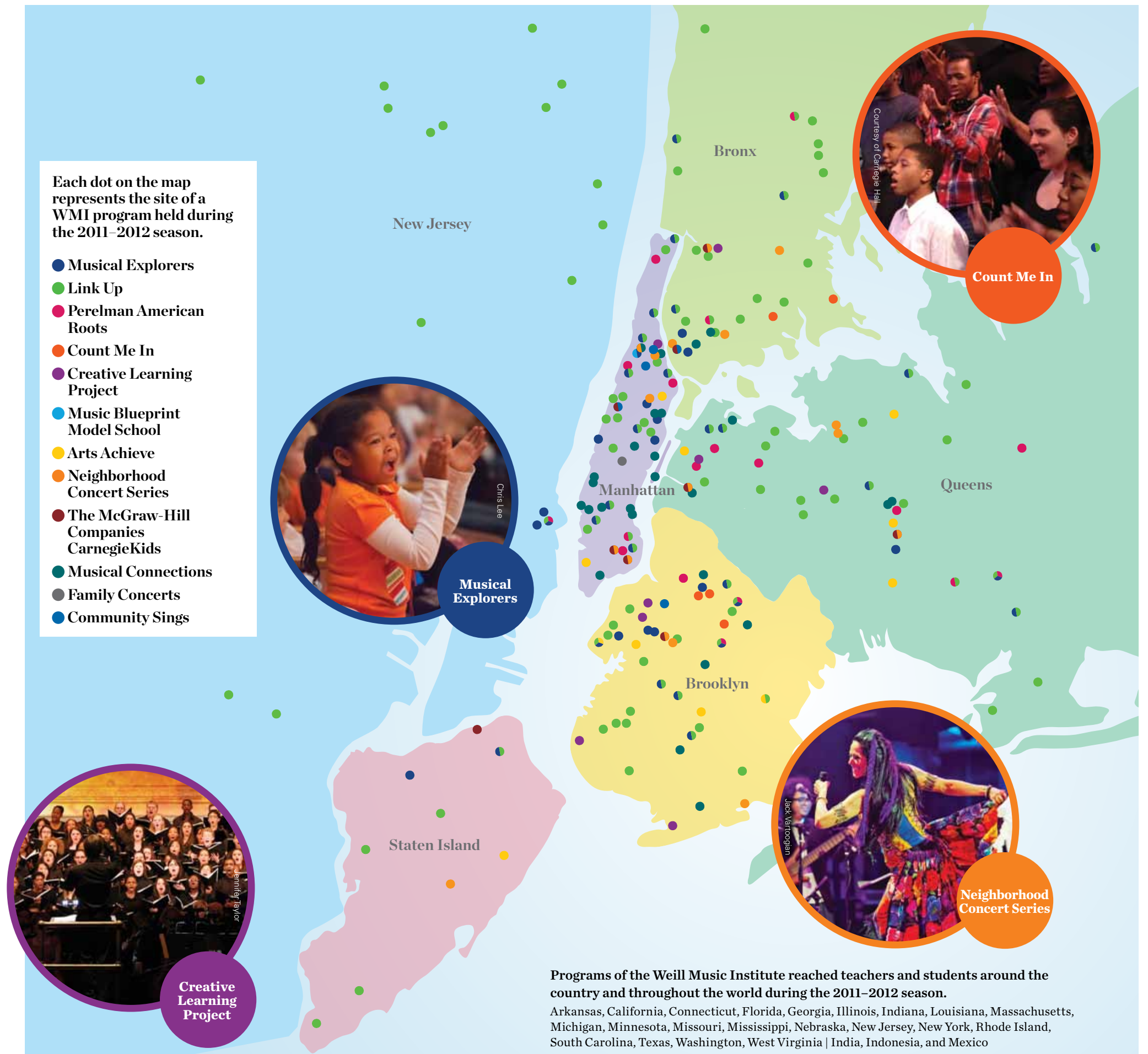
Musical Explorers



Count Me In



Neighborhood Concert Series



Programs of the Weill Music Institute reached teachers and students around the country and throughout the world during the 2011–2012 season.

Arkansas, California, Connecticut, Florida, Georgia, Illinois, Indiana, Louisiana, Massachusetts, Michigan, Minnesota, Missouri, Mississippi, Nebraska, New Jersey, New York, Rhode Island, South Carolina, Texas, Washington, West Virginia | India, Indonesia, and Mexico

The Academy

A program of Carnegie Hall, The Juilliard School, and the Weill Music Institute in partnership with the New York City Department of Education

Now in its fifth year, The Academy continued to support young professional musicians by helping them develop their careers as exemplary performers, cutting-edge programmers, and dedicated teachers by providing opportunities not only to perform at the highest level, but also to extend their music making from the concert stage into schools and the larger community. In addition to a robust program of professional development and performance opportunities with Ensemble ACJW, fellows shared their artistry during the school year by partnering with a New York City public school and creating interactive performances for sites that wouldn't otherwise have access to live music through the Weill Music Institute's Musical Connections program. Spring 2012 saw the completion of the second year of the program by 18 Academy fellows who, as they proceed with their professional careers, will continue to redefine what it means to be a contemporary musician in the classical music world.



Bite-Sized ACJW: Shreds and Sings at (Le) Poisson Rouge | June 10

2011–2012 Fellows of The Academy Ensemble ACJW

Hamilton Berry, Cello
Paul Won Jin Cho, Clarinet
Yves Dharamraj, Cello
Keats Dieffenbach, Violin
Margaret Dyer, Viola
Brian Ellingsen, Bass
Emily Popham Gillins, Violin
Alexey Gorokholinsky, Clarinet
Richard Harris, Trombone
Shelley Monroe Huang, Bassoon
David Kaplan, Piano
Moran Katz, Clarinet
ToniMarie Marchioni, Oboe
Carl Oswald, Oboe
Marina Radiushina, Piano
Nathan Schram, Viola
Yoobin Son, Flute
Leelanee Sterrett, Horn

The fellows performed more than 20 concerts this season as Ensemble ACJW, among them several concerts in Weill Recital Hall and Zankel Hall that featured collaborations with leading conductors Pablo Heras-Casado and David Robertson, premieres of Carnegie Hall commissions by Ryan Gallagher and members of Sleeping Giant, and a special concert celebrating Carnegie Hall's 120th anniversary.

In addition to appearances at Carnegie Hall and The Juilliard School's Paul Hall, the ensemble, hailed as "the new face of classical music for New York" by *The New York Times*, performed at venues throughout New York City. Academy musicians also continued a special tradition that has existed since The Academy's inception by traveling to Skidmore College for residencies that include master classes with student musicians and composers, appearances at area schools and community centers, and informal concerts throughout the Saratoga Springs community. This fruitful collaboration blossomed further this spring when student narrators and dancers joined the fellows for a multi-disciplinary performance of Igor Stravinsky's *Histoire du soldat*.

Academy fellows also created interactive chamber music concerts, which they performed in Academy partner schools as well as at non-traditional community venues through the Weill Music Institute's Musical Connections program. This citywide initiative brings live music to people coping with challenging social, physical, and emotional circumstances in healthcare settings, correctional and juvenile-justice facilities, and senior-service organizations.



David Robertson with Ensemble ACJW in Zankel Hall | March 25



Jennifer Taylor

Chronological Listing of Ensemble ACJW Events

October 18–22, 2011
 Skidmore College Residency
 Arthur Zankel Music Center,
 Helen Filene Ladd Concert Hall

October 25, 2011
 Weill Recital Hall

November 17, 2011
 Paul Hall, The Juilliard School

November 20, 2011
 Presbyterian Church of Chatham

December 1, 2011
 Weill Recital Hall

December 4, 2011
 Our Saviour's Atonement
 Lutheran Church

December 16, 2011
 Zankel Hall

January 13, 2012
 Paul Hall, The Juilliard School

February 7–11, 2012
 Skidmore College Residency
 Arthur Zankel Music Center,
 Helen Filene Ladd Concert Hall

February 14, 2012
 Weill Recital Hall

February 28, 2012
 (Le) Poisson Rouge

March 15, 2012
 Paul Hall, The Juilliard School

March 25, 2012
 Zankel Hall

April 15, 2012
 Our Saviour's Atonement
 Lutheran Church

April 18, 2012
 Weill Recital Hall

April 22, 2012
 Ukrainian Institute of America

April 29, 2012
 (Le) Poisson Rouge

May 3, 10, 18, and 24, 2012
 Trinity Wall Street

May 31, 2012
 Paul Hall, The Juilliard School

June 3, 2012
 Our Saviour's Atonement
 Lutheran Church

June 10, 2012
 (Le) Poisson Rouge

Instilling “a Dream of Musical Performance”

“The Academy fellow has challenged our fourth- and fifth-grade students to believe that with practice and determination they can attain a dream of musical performance, and has given me opportunities to expand my teaching skills. Occasionally I have been taken out of my comfort zone only to discover my students relish the opportunity to experience something new. My teaching and our school’s music program have been enriched by this partnership. Most importantly, my students have received an experience in music that they will carry with them throughout their lives. I know I will.”

—Audrey Mullen, Academy Partner Teacher at PS21, Edward Hart Elementary School



Paul Won Jin Cho assists the clarinet section during band practice at PS200, Benson School | November 22

Inspiring Students to “Dream Big and Practice Hard”

“The Academy offers New York City music educators a unique way of improving the level of musicianship in our classrooms. Through guided listening lessons, the children not only heard world-class music, but were able to express their emotional reactions to the music in an encouraging atmosphere. Through our partnership, we have been able to offer support to struggling students through extra-help sessions and sectionals. Our two-year partnership with The Academy has helped the students attain a level of playing far above that of previous years, and inspired my students to dream big and practice hard.”

—Jennifer Schecter, Academy Partner Teacher at MS158, Marie Curie Middle School

Partnership with New York City Public Schools

The Academy’s in-school residency continues to represent one of the largest in-depth collaborations between a cultural institution and New York City public schools. Over the course of the school year, the fellows brought mastery of their instruments and a performer’s perspective to music classrooms in all five boroughs in an effort to build students’ musical skills through instrumental teaching, creative projects, and performances. In addition to the performance residency, fellows also created and performed in interactive ensemble concerts with other Academy colleagues in each of the schools. To conclude the season, over 400 students from 17 partner schools gathered at The Juilliard School to perform for parents, friends, students, teachers, and school administration at the inaugural Academy Partner School Performance Festival—a day of special group performances that celebrated the conclusion of the two-year partnership and put the spotlight on students’ musical accomplishments.

Increasing “Self-Esteem and Pride”

“From the very beginning, our partnership with The Academy made all of us at Brooklyn High School of the Arts feel special. The Academy fellow and I worked together well in assessing the needs and goals of the orchestra students, collaborated well in creating meaningful lessons, and set about creating a positive culture within the group. The knowledge I’ve gained of string instrument technique from the fellow has allowed me to move forward confidently in teaching string instruments. By the end of the two-year partnership, the string program at BHS had been transformed into an excellent performing ensemble with increased self-esteem and pride.”

—John Scandone, Academy Partner Teacher at Brooklyn High School of the Arts



Cello sectional with Yves Dharamraj at Brooklyn High School of the Arts | April 18

Academy Partner Schools

2011–2012 Season

Bronx

PS157 Grove Hill Elementary School
Fordham High School for the Arts

Brooklyn

PS282 Park Slope Elementary School
PS241 The Emma L. Johnston Elementary School
PS130 Parkside Elementary School
PS112 Lefferts Park Elementary School
PS75 The Maya Cortiella Elementary School
PS200 Benson Elementary School
PS135 Sheldon A Brookner Elementary School
MS51 William Alexander Middle School
PS207 Elizabeth G. Leary Elementary School
Brooklyn High School of the Arts

Manhattan

PS46 The Arthur Tappan Elementary School

Queens

PS63 Old South Elementary School
PS21 The Edward Hart Elementary School
PS13 Clement C Moore Elementary School
MS137 America’s School of Heroes
MS158 Marie Curie Middle School

Staten Island

IS61 William A. Morris Middle School
Curtis High School

International Residencies and Alumni

The Academy’s relationship with its fellows continues long after they complete the program. Through its growing number of talented alumni, The Academy has expanded its reach to national and international audiences by participating in residencies created in partnership with Carnegie Hall. Alumni returned to perform at Germany’s Festspiele Mecklenburg-Vorpommern as well as at the Abu Dhabi Music and Arts Festival, where they presented a series of performances and educational events.

The alumni also conducted residencies in Mexico and India thanks to funding from the US Department of State. These included a Mexican artist exchange with Centro Nacional de las Artes and Instituto Nacional del Bellas Artes y Literatura in Mexico City, as well as a tour to Mumbai, India. During the residency in India, alumni gave interactive performances at local schools, performed at the National Centre for Performing Arts, led workshops for music teachers and musicians, and collaborated with professional Indian musicians from various musical traditions at BlueFrog club in Mumbai.

As a testament to the lasting impact on its alumni, in April 2012, 46 alumni musicians from The Academy formed a new independent artist collective called The Declassified. The New York-based collective will bring performances and creative experiences to schools, hospitals, prisons, and bars in addition to concert halls. The musicians will also continue to be featured by Carnegie Hall in curated residencies, and are included on the artist roster of the Hall’s Musical Connections program.

Studio Towers Renovation Project

Carnegie Hall's Studio Towers Renovation Project continued to take shape this season, progressing on schedule and on budget. Our deepest gratitude goes to the City of New York, the State of New York, Judith and Burton P. Resnick, and Joan and Sanford I. Weill for their leadership support of this major initiative. This massive undertaking will enable Carnegie Hall to transform its facilities, ensuring that the Hall remains the premier international destination for the world's greatest artists in the 21st century and beyond.

The project will create new inspirational spaces dedicated to music education within existing upper floors of the building, and will also fully refurbish Carnegie Hall's backstage areas. A new Education Wing will include ensemble rooms, practice rooms, and teaching studios, as well as a state-of-the-art home for Carnegie Hall's Archives. Adjacent to the Education Wing will be a new outdoor Roof Terrace—a gathering place for visitors to the building. These new facilities, expected to be completed in 2014, will ultimately increase the number of people that Carnegie Hall serves and provide a wonderful setting in which to inspire a lifelong love of music in young musicians, students, educators, and audiences alike.

\$10,000,000 or more
Joan and Sanford I. Weill
Judith and Burton P. Resnick

\$1,000,000 to \$2,500,000
Leni and Peter May

Linda and Earle S. Altman
Clarissa and Edgar Bronfman, Jr.
Mr. and Mrs. Nicola Bulgari
Anna-Maria and Stephen Kellen
Foundation

Mark and Anla Cheng Kingdon
Foundation
Mr. and Mrs. Robert I. Lipp
Mr. and Mrs. Terry J. Lundgren /
Macy's, Inc.

Beth and Joshua Nash
Ronald O. Perelman Family
Foundation
Susan and Elihu Rose Foundation
Mrs. Julio Mario Santo Domingo
Henry and Elizabeth Segerstrom
Siemens Corporation
Mr. and Mrs. A.J.C. Smith
S. Donald Sussman
Judy Francis Zankel

The Zankel Fund
Ann Ziff

\$100,000 to \$999,999
The Diller-von Furstenberg
Family Foundation

Mr. and Mrs. Anthony B. Evnin
The Marc Haas Foundation
Mr. and Mrs. Thomas G. Maheras
Mr. and Mrs. Lester S. Morse Jr.
The Joe Plumeri Foundation

Deloitte LLP
Ernst & Young LLP
The Horace W. Goldsmith
Foundation
Carl Jacobs Foundation
KPMG LLP
PwC

Edward John and Patricia
Rosenwald Foundation
Suki Sandler
Dr. and Mrs. Thomas P. Sculco
Anonymous
Susan and Ed Forst / Forst Family
Foundation

Clive and Penny Gillinson
Frederick J. Iseman
Stella and Robert Jones
Gilbert and Lena Kaplan
The Lizabeth and Frank Newman
Charitable Foundation
Mr. and Mrs. William G. Parrett
Linda Wachner
John W. and Mary S. Zick
Anonymous

**Lead funding provided by
the City of New York, with
additional support from New
York State.**

New York City Department of
Cultural Affairs
New York City Council
Office of the Manhattan Borough
President
New York State Executive Office
New York State Senate
New York State Council on
the Arts

As of June 30, 2012



Carnegie Hall



Roof Terrace, framed by new Education Wing



Green Room



Dressing Room



Large Practice Room

Donors

Carnegie Hall was able to fulfill its mission of bringing extraordinary music performed by the world's greatest artists to the widest possible audience thanks to the generous support of its donors, whose contributions toward artistic and educational programs totaled nearly \$23 million in the 2011–2012 season. We particularly want to thank Bank of America for its seventh consecutive year as season sponsor, and salute Trustee Anne M. Finucane for fostering this partnership. We also express gratitude this season to The Irene Diamond Fund, whose stellar support can be felt in numerous Carnegie Hall initiatives on the concert stage and through the Weill Music Institute.

On the occasion of its 120th anniversary, Carnegie Hall paid tribute to Tchaikovsky, whose celebrated inaugural performance in 1891 was a sensation. The 2011–2012 season opened with a special series of concerts hailing his influence on St. Petersburg performed by the Mariinsky Orchestra and sponsored by PricewaterhouseCoopers. We also appreciate PwC's sponsorship of the Opening Night Gala, with Dennis M. Nally serving as the Corporate Chairman. Our thanks go to the Gala's Honorary Chairmen, The Honorable John R. Beyrle, Ambassador of the United States to the Russian Federation, and His Excellency Sergey I. Kislyak, Ambassador of the Russian Federation to the United States. Special thanks also go to Gala Co-Chairs Mercedes and Sid R. Bass, Yoko Nagae Ceschina, Frederick J. Iseman, Marie-Josée and Henry R. Kravis, Katherine Farley and Jerry I. Speyer, Joan and Sanford I. Weill, and Ann Ziff.

Carnegie Hall honored legendary photographer Bill Cunningham with a special Medal of Excellence Gala for his extraordinary devotion to chronicling fashion for nearly 50 years, as well as inspiring philanthropy and recognizing the important place that arts, culture, and non-profit causes hold in the life of New York City. This star-studded event could not have taken place without the guidance of its leadership, including Honorary Gala Chairs Joan and Sanford I. Weill, Gala Chairs Annette and Oscar de la Renta and Sarah Jessica Parker, and Gala Co-Chairs Mercedes T. Bass, Diane von Furstenberg and Barry Diller, Tina and Terry J. Lundgren, and Elizabeth and Henry T. Segerstrom. The evening also included a festive after-party with DJ Cassidy led by the Junior Committee.

The Hall was definitely alive with *The Sound of Music* at our Musical Theater Gala this spring, which featured a concert performance of this classic with its timeless score by Rodgers and Hammerstein. A special acknowledgment goes to Honorary Chairs: His Excellency Ernst-Peter Brezovszky, Consul General of the Republic of Austria; Anna E. Crouse; Mary Rodgers Guettel; Alice Hammerstein Mathias; and Johannes von Trapp. We also thank Corporate Sponsor Ernst & Young LLP and Corporate Chair Stephen R. Howe Jr., and Gala Co-Chairs Susan and Edward C. Forst, Dinny and Lester S. Morse Jr., and Nelle Nugent and Jolyon Stern.



Honoree Bill Cunningham at the Medal of Excellence Gala | April 23

Annual Fund

Individuals and Foundations

Platinum Circle \$100,000 and more

Estate of Brooke Astor
Mrs. Mercedes T. Bass
Booth Ferris Foundation
Mr. and Mrs. Nicola Bulgari
Yoko Nagae Ceschina
The Irene Diamond Fund
Barry Diller and Diane von Furstenberg
Susan and Edward C. Forst and
Goldman Sachs Gives
Marina Kellen French
Max H. Gluck Foundation
Horace W. Goldsmith Foundation
The Marc Haas Foundation / Helen Hotze
Haas Foundation
Irving Harris Foundation
Mr. Frederick J. Iseman
Anna-Maria and Stephen Kellen Foundation
Mark and Anla Cheng Kingdon Foundation
The Kovner Foundation
Martha and Bob Lipp
The Herman Lissner Foundation
Leslie and Tom Maheras
Mr. and Mrs. Lester S. Morse Jr.
Robertson Foundation
Rockefeller Foundation
The Felix and Elizabeth Rohatyn Foundation
Susan and Elihu Rose Foundation
The Fan Fox and Leslie R. Samuels
Foundation
Mrs. Julio Mario Santo Domingo
Mr. and Mrs. Stanley Shuman
The Alice Tully Foundation
Joan and Sanford I. Weill
Ann Ziff

\$50,000 to \$99,999

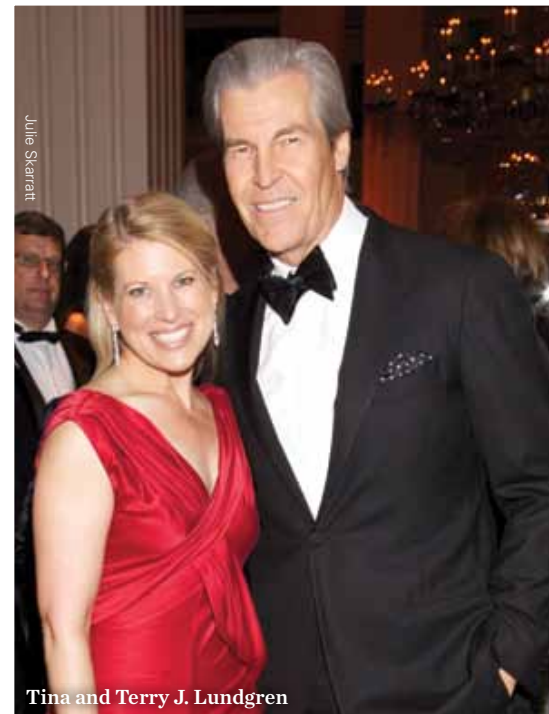
Estate of Mrs. Barbara F. Austin
The Caplin Foundation
The E.H.A. Foundation
The Enoch Foundation
Leona Kern
The Blanche & Irving Laurie Foundation
Mr. and Mrs. Daniel R. Lewis
Audrey Love Charitable Foundation
Mr. and Mrs. Terry J. Lundgren
The Ambrose Monell Foundation
Suki Sandler
The Morris and Alma Schapiro Fund
Dr. and Mrs. Thomas P. Sculco
Elizabeth and Henry Segerstrom
The Shubert Foundation
Mr. and Mrs. A. J. C. Smith
Vital Projects Fund
Mrs. Charles B. Wrightsman

Golden Circle \$25,000 to \$49,999

Mr. and Mrs. Robert Abrams
Linda and Earle S. Altman
The Arthur Foundation
Mr. and Mrs. Frederick C. Benenson
Mr. Ronald E. Blaylock
Bryan Cave LLP
The Ralph M. Cestone Foundation
Mrs. Judith Chasanoff
Aaron Copland Fund for Music
Mr. and Mrs. Richard A. Debs
Jean-Marie and Elizabeth Eveillard
Mr. and Mrs. Anthony B. Evnin
Mr. and Mrs. Donald Fried
Ann and Gordon Getty Foundation
Mr. and Mrs. Klaus Jacobs
Stella and Robert Jones
Gilbert and Lena Kaplan
Mr. and Mrs. Bruce Kovner
The Philip and Janice Levin Foundation
A. L. and Jennie L. Luria Foundation
Leni and Peter May
Henry and Lucy Moses Fund
Linda and Stuart Nelson
Ronald O. Perelman
Mr. and Mrs. Jonathan D. Resnick
Mr. Jay B. Rosenberg
Marge Scheuer and Family
Mr. Peter William Schweitzer
Jeanne and Herbert Siegel
Mr. and Mrs. Larry A. Silverstein
James Thurmond Smithgall
Mr. and Mrs. Howard Solomon
Starr Foundation
Jean Stein
Mr. Robert L. Turner
The Weiler Fund
Judy Francis Zankel
Pia and Jimmy Zankel
Susan and Mark Zankel
Anonymous

Silver Circle \$20,000 to \$24,999

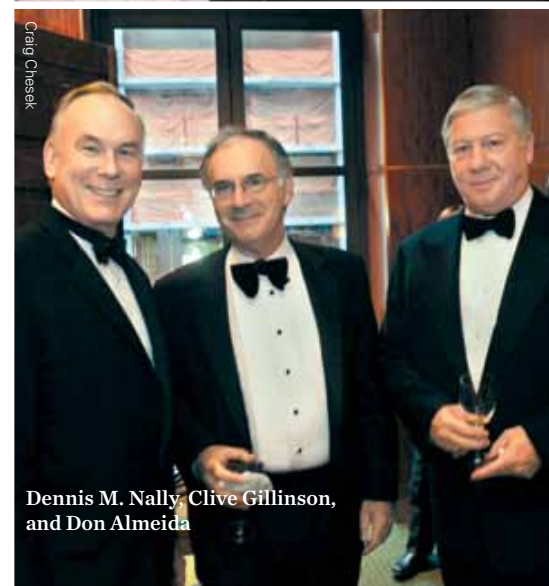
Mr. and Mrs. John P. Birkelund
The Gladys Kriebel Delmas Foundation
Mr. and Mrs. Walter A. Eberstadt
Rosalind and Eugene J. Glaser Foundation
Andrew J. Martin-Weber and
Kevin J. Wertman
The Barbro Osher Pro Suecia Foundation
Judith and Burton P. Resnick
Mary Ellen and Karl von der Heyden
Jeanette S. and Paul A. Wagner
Mary J. Wallach
George and Joyce Wein Foundation
Mr. and Mrs. Lawrence Weinbach



Tina and Terry J. Lundgren



Mercedes T. Bass and Oscar de la Renta



Dennis M. Nally, Clive Gillinson,
and Don Almeida

Chairman's Circle

Our annual Chairman's Circle event was a highlight of the spring season. Donors and Trustees were treated to cocktails and hors d'oeuvres, followed by a spectacular private recital of cabaret songs by the multifaceted mezzo-soprano Stephanie Blythe with pianist Craig Terry, and culminated with dinner with the artists. Special thanks go to Joan and Sanford I. Weill for hosting the event, as well as to our new partner Cartier for its extraordinary generosity in providing a truly lovely evening from beginning to end.



Kyle Blackmon, Sanford I. Weill, and Lang Lang

Chairman's Circle \$15,000 to \$19,999

Mr. and Mrs. Emanuel Ax
Rose M. Badgley Residuary
Charitable Trust
The Barker Welfare Foundation
Mr. Norton Belknap
Bialkin Family Foundation
Mr. H. S. Beau Bogan and
Mr. Elliot M. Friedman
Ruth and Louis S. Brause
Mr. and Mrs. Leonard Feinstein
Cynthia and Herbert Fields
Clive and Penny Gillinson
Mr. Robert D. Goldfarb
Jane and Charles Goldman
Mr. and Mrs. Stephen Graham
Hermione Foundation
Richard H. Holzer Memorial
Foundation
Florence and Robert Kaufman
Mrs. Andrea Klepetar-Fallek
Dr. Jamie Koufman
Mr. Arthur L. Loeb
Mrs. Nancy A. Marks
Mrs. Helen Nash
Mr. and Mrs. William G. Parrett
In Memory of Marion Pokoik
Dick
Mr. and Mrs. Charles J. Seidler
Ms. Alice Shure
Robert B. Silvers
Robert Summer and Susan Kasen
Sylvan and Ann Oestreicher
Foundation, Inc.
The Tombros Foundation
Trust for Mutual Understanding
Mr. and Mrs. Rafael Viñoly
Voice Institute of New York
The Isak and Rose Weinman
Foundation
Anonymous (4)

Artist's Circle \$10,000 to \$14,999

Roger and Camille Abelson
Mr. and Mrs. Alan M. Ades
Mr. and Mrs. Burnside E.
Anderson III
Ginette and Joshua Becker
Mr. Albert Behler
Peggy and Paul Bernstein
Mr. Kim D. Bleimann
The Brodsky Family Foundation
Mr. Charles R. Bronfman and
Ms. Rita Mayo
Deeds Foundation
Mr. and Mrs. Joseph A. DiMenna
Marjorie and Alan F. Doniger
Ella Fitzgerald Charitable
Foundation
David and Tanya Fox
Barbara W. Fox-Bordiga in
memory of Lord Bordiga
Seth Frank in memory of David
Gurland—"Carnegie Hall,
Someday"
The Gilder Foundation
Joan Harris, The Irving Harris
Foundation
Carol and Howard Holtzmann
Carl Jacobs Foundation
Jephson Educational Trusts
Sidney R. Knafel and
Londa Weisman
Lanie & Ethel Foundation
Elaine and Robert LeBuhn
Mr. and Mrs. Joel Leitner
Lese Family Foundation
Leon Levy Foundation
Mr. Yo-Yo Ma and Ms. Jill Hornor
Sylvia and Leonard Marx Jr.
Mr. Robert Menschel
E. Nakamichi Foundation
Beth Goldberg Nash and
Joshua Nash
Ms. Hiroko Onoyama and Mr.
Ken Sugawara

Mr. and Mrs. Harold Prince
Mr. and Mrs. Jonathan P. Rosen
Phyllis and Charles Rosenthal
Mrs. Lily Safra
Mr. Gil Shiva
Abraham and Beverly Sommer
Foundation
Joseph A. Stern
Mr. Kurt G. Strovink
Robert Summer and Susan Kasen
S. Donald Sussman
Mr. and Mrs. Wilmer J.
Thomas Jr.
The Vidda Foundation
Svetlana and Herbert Wachtell
Foundation
Miriam and Ira D. Wallach
Foundation
Mrs. John L. Weinberg
Neil Westreich
Mrs. Ruth Widder
Mr. and Mrs. Charles O. Wood
Dr. Miao-Dan Wu
Ms. Shannon Wu and
Mr. Joseph Kahn
The Oni Zazen Collection
Mr. Uzi Zucker
Anonymous (2)

Carnegie Circle \$5,000 to \$9,999

Ms. Jacqueline Albert Simon
Mrs. Robert Allen
Kathi and Peter Arnow
Babbitt Family Charitable Trust
Barbash Family Fund
Mr. Shepard Barbash and
Ms. Vicki Ragan
Ms. Joan Benny
Mrs. Stephanie Bernheim
Ms. Elaine S. Bernstein
Francine J. Berry
Luciano and Giancarla Berti
Mr. Sam Selim Beyda
Mr. and Mrs. James A. Block

Gary Brewster and Tess Mateo
Mr. Ryan Brown
Mr. and Mrs. Robert L. Burch
Ann and Earl Carlyss
Mr. and Mrs. Arthur L. Carter
Mrs. Betty S. Chaurize
Mrs. Marjorie Chester
Mr. Theodore Chu
Mr. and Mrs. Dominique Clavel
Mr. Yann Coatanlem
Mr. and Mrs. Abraham E. Cohen
Ms. Anne Cohen
Jill and Irwin B. Cohen
Michele and Terry Cone
Mr. Leon Constantiner
Mr. Victor Constantiner
Nancy and Bruce Cooper
Edmond and Yvette Cotty
Mr. George F. Cumbler
D. Ronald Daniel and Lise Scott
Ms. Elizabeth de Cuevas
Mrs. Strachan Donnelley
Dr. Joan Eliasoph
Mr. Stanley Epstein
Mr. Otho Eskin
Mr. and Mrs. Leroy Fadem
Mr. Giovanni Favretti
Mr. David H. Feinberg
Mr. Kenneth Feinberg
Doucet and Stephen Fischer
Mr. and Mrs. Arthur Fleischer
Mr. and Mrs. John French III
Gideon and Sarah Gartner
Mr. and Mrs. John D. Gilliam
Faith Golding Foundation Inc.
Mr. Alexander Goldberg
Mr. David M. Goldman and
Mark A. Schaffer
Mr. and Mrs. John Goodrich
Dr. and Mrs. Victor R. Grann
Mr. and Mrs. Eugene M. Grant
Monika and Peter Greenleaf
Mr. L. Jay Grossman Jr.
Mr. Peter Gruenberger and
Dr. Carin Lamm
Lynne and Harold Handler



Clive Gillinson and Mrs. Julio Mario Santo Domingo



Anna Netrebko, Yo-Yo Ma, and Ann Ziff

Dr. Lynne Harrison
 Ms. Adriana Herrera
 Dr. Betty S. Iu
 Mr. Stuart M. Johnson
 Mr. and Mrs. Eric Kaltman
 Mr. and Mrs. Robert Karin
 Dr. and Mrs. Robert Kavesh
 Ms. Yukako Kawata
 Ms. Irene King
 Ms. Jane W. Kitselman
 Cindy Knuth
 Mr. and Mrs. Daniel F. Kolb
 Dr. Barbara Kravitz
 Mr. and Mrs. Mickey Kupperman
 Mr. and Mrs. Marvin Kurjan
 Ms. Solange Landau
 Mr. and Mrs. Leonard A. Lauder
 Ms. Sue Lehmann
 Kurt F. Leopold
 The Irene Levoy Foundation
 Ms. Francesca Liechenstein and
 Ms. Jane Riskin Bean
 Ken Lin Fund
 Mr. and Mrs. A. Michael Lipper
 Litwin Foundation
 William and Diane Lloyd
 Mr. Milton Martinez
 Mr. Richard Massey
 Mr. and Mrs. Joseph McLaughlin
 Mr. Ajai Mehta
 Fundacion Meijer-Werner
 Mr. and Mrs. Samuel R. Meshberg
 Miller Khoshkish Foundation
 Mrs. Alice Netter
 Mrs. K. F. Netter

The Lizabeth and Frank Newman
 Charitable Foundation
 Mr. Stanley Newman and
 Dr. Brian Rosenthal
 Mrs. Claude Nicaise
 Mr. and Mrs. John A. Nielsen
 In memory of Kirk S. Norton
 Ms. Paula Sarnoff Oreck
 Reverend and Mrs. Everett C.
 Parker
 William E. Phillips and
 Barbara Smith
 Ms. Debra L. Pipines
 Mr. and Mrs. Leon B. Polsky
 Pascale and Ernest Raab
 Mr. and Mrs. Ira M. Resnick
 Allan and Reda R. Riley
 Foundation
 Jane and Paul Rittmaster
 Mr. David Rockefeller Sr.
 Mr. Richard Roth
 The Tom Roush Fund of the
 Funding Exchange
 Bonnie and Mitchell Rudin/
 CBRE
 Mr. and Mrs. Lawrence Saper
 Rosita Sarnoff and Beth Sapery
 Dr. and Mrs. Daniel Schapiro
 Mr. and Mrs. Gregg L. Schenker
 Alfred and Anita Schnog
 Mr. and Mrs. Edmund Schroeder
 Lynn Schusterman
 Mr. and Mrs. William A.
 Schwartz

Jordan B. Seaman and The
 Grateful Foundation
 Mr. Paul J. Sekhri
 Mr. Martin Selig
 Mrs. Florence L. Seligman
 Ms. Tracy Sereteau
 Mr. and Mrs. Hardwick Simmons
 Mr. and Mrs. F. Randall Smith
 Dr. and Mrs. Peter M. Som
 Mrs. Annaliese Soros
 Jane Ginsburg and
 George T. Spera Jr.
 Gregory St. John and
 Gary McKay
 Mrs. Kathryn Steinberg
 Sydney and Jonathan Stern
 Mrs. Vera Stern
 Mr. James B. Stewart Jr. and
 Mr. Benjamin Weil
 Mr. and Mrs. Neal R. Stoll
 Mr. and Mrs. Edward Streim
 Lee and Roger Strong
 Ms. Shining Sung
 Mr. Jay H. Tanenbaum
 Wagner Thielens
 Mr. and Mrs. Jesse I. Treu
 Dr. and Mrs. Constantine T.
 Tsitsera
 Mr. Gordon VeneKlasen
 Marian M. Warden Fund of
 The Greater Harrisburg
 Foundation
 Charles and Jacqueline Warren
 Jieun and David Wax
 Drs. Andrew and Nancy Weiland

Mr. Peter Wexler
 Ms. Henrietta C. Whitcomb and
 Mr. David K. Whitcomb
 Ms. Dian Woodner
 Jay N. and Susan Woodworth
 Chris and Lonna Yegen
 Peter Young and Merit E. Janow
 Ms. Susan Zeckendorf
 Mr. and Mrs. John W. Zick
 Ms. Audrey Y. Zucker
 Anonymous (5)

**Carnegie Club
 \$2,500 to \$4,999**

Mr. Adil Abdulali
 Mr. Ernest Abrahamson
 Mr. and Mrs. William H. Abrams
 Mr. and Mrs. Lawrence D.
 Ackman
 Margot Adams
 Deborah and Charles Adelman
 Joseph and Jacqueline Aguanno
 Mr. and Mrs. Mario Albek
 Arlene and Alan Alda
 Bruce Alleborn
 Dr. Jennifer Altman and
 Mr. Jason Fein
 Jose Llamas
 Mr. and Mrs. Stanley J. Arkin
 Ms. Rita Arlen
 Ms. Sara K. Arlin and Ms.
 Jennifer L. Mowad
 Jenna Arme and Sean Koffel
 The Louis Armstrong
 Educational Foundation

Ms. Norma J. Arnold
 Ronald D. Arron and
 Roberta Weiner
 Ms. Martina Arroyo
 Ms. Adrienne Arsh
 Mrs. George Asch
 David and Eugenia Askren
 Mr. Steven T. Atkins
 Consul Philippe Auguin
 Mr. and Mrs. Paul Avrich
 Edwin Bacher and Johanna
 Weber
 Joseph T. Baio
 Mrs. Doris C. Kempner and
 Mr. Frederic R. Ballen
 Mr. Sid R. Bass
 Mr. Sanford L. Batkin
 Mr. Andreas Baum
 Mr. and Mrs. Michael Beaury
 Ms. Lisa G. Beckerman
 Mr. Joseph Bell and
 Mr. Peter Longo
 Mr. and Mrs. Selim Benardete
 Mrs. Susan Bender
 Ms. Denise Benmosche
 Esme and Roger Berg
 Mr. Martin Berkowitz
 Daniel L. and Ann L. Bernstein
 Barbara and Joel Edward Bickell
 Dr. Jan E. Lewis and
 Mr. Barry Bienstock
 Mary Billard and Barry Cooper
 Ms. Cynthia E. Bing
 Mrs. Tina-Maria Birch
 Adrienne and Robert Birnbaum
 Ms. Jolana Blau
 Jane S. Block
 Harvi and Bob Bloom
 Ms. Rachel Bluth and
 Mr. Derek Smith
 Jane K. and Allen L. Boorstein
 Ms. Janet Malcolm Botsford
 Mr. David Bottoms
 Ruth Bowman and
 George Bookman

Mr. Stuart D. Boynton
 Mr. Clifford Brand and
 Ms. Robin Lynn Alexander
 Cheryl and David Brause
 Mr. and Mrs. Ludwig Bravmann
 Mr. John Brewer
 Dr. Rosemarie D. Bria-Levine
 Mr. Errol Brick
 Dr. and Mrs. George Brief
 Mr. and Mrs. Klaus P.
 Brinkmann
 Elizabeth A. R. and
 Ralph S. Brown Jr.
 Mrs. Susanne Brundige
 Ms. Lorraine Buch
 Mr. and Mrs. Leslie Buckland
 Ms. Fran Bull
 Mr. and Mrs. George R. Bunn Jr.
 Mr. and Mrs. Daniel A. Burack
 Herbert and Ann Burger
 Mr. Sergey G. Butkevich
 Mr. and Mrs. Gilbert Butler
 Mr. Robert Cane and
 Ms. Alison Nowak
 Sandra and Michael J. Cargill
 Century Direct
 Ms. Patricia W. Chadwick
 Catia Zoullas Chapin
 Mr. Pablo Cisilino and
 Ms. Silvina Leone
 Ms. Georgette Ciukurescu
 Mr. Steve Coffey and
 Mr. George Stirling
 Mr. Daniel Cohen
 Phoebe and Dr. Bernard Cohen
 Mr. and Mrs. Lewis G. Cole
 Mr. John P. Coll Jr.
 Richard Collens MD
 Elizabeth Compton and
 Eric P. Grubman
 Mr. Ronald E. Compton and
 Mrs. Nancy S. Compton
 Mr. and Mrs. Costa Constantine
 Mr. and Mrs. Kevin Conway
 The Cowles Charitable Trust

Mr. Frank J. Cracolici
 Mr. and Mrs. John R. Craig
 Mr. William Craig III
 Dr. Michael Cucka
 Peter D. and Julie Fisher
 Cummings Family Foundation
 Mr. and Mrs. William Curry
 Curtains Up!
 Barbara and Richard B.
 Dannenberg
 Ms. Kathy L. Dean
 Steve and Connie Delehanty
 Ms. Jamie deRoy
 Jennie L. and Richard K.
 DeScherer
 Mr. and Mrs. Jerome Deutsch
 Ms. Rosalind Devon
 Florence and Burt Diamond
 Mr. and Mrs. Harold J. Diamond
 Hester Diamond
 Dr. and Mrs. Stanley Dicker
 Mrs. Ruth Dickler
 Ms. Constance Difede
 Joan and Stanley Diller
 Howard Dillion and
 Nell Dillion-Ermers
 Ms. Carol E. Domina
 Ms. Linda L. D'Onofrio
 Barbara and Thomas Dooley
 Amit and Kalpana Doshi
 Mr. John R. Doss
 Jean and Gordon Douglas
 John A. Dryzga
 Stephen and Judy Dunn
 Ms. Susan Dunne
 Jay Dweck
 Shoshana Dweck
 Mrs. Charles H. Dyson
 William James Earle
 Mr. and Mrs. John Eastman
 Ms. Launa Eddy
 Dr. and Mrs. Colin S. Edwards
 Mr. Jay K. Egelberg
 Mr. Richard R. Eger and
 Ms. Anne E. Aronovitch

Mr. and Mrs. Alvin H. Einbender
 Mr. and Mrs. George Elvin
 Mrs. Thomas Enders
 Mr. and Mrs. Alan S. Englander
 Mr. and Mrs. Alexander T.
 Ercklentz
 Ms. Gail Erickson
 Peter and Joan Faber
 Ms. Mary Lou Falcone and
 Mr. Nick Zann
 Fiona Morgan Fein
 Norman Feit
 Mr. Arthur F. Ferguson
 Francisco J. and
 Clara B. Fernandez
 Dr. and Mrs. Bernard Ferrari
 Gilbert and Anita Fields
 Mr. and Mrs. Stephen W. Fillo
 Mrs. Roberta Fine
 Susie and Charles Finkel
 Ms. Barbara G. Fleischman
 Ona and Richard Fleming
 Mr. and Mrs. Donald Fox
 Andrew J. Frackman and
 Emily Braun
 Mr. Andrew C. Freedman
 Mr. and Mrs. Marvin Freeman
 Ms. Mary Ann Frenzel
 Mr. and Mrs. Edward A. Friedman
 Gerald L. and Sheree A. Friedman
 Mr. and Mrs. Jeffrey Friedman
 William Friedman Diamonds,
 Ltd.
 Patrick Gallagher and
 Robert Watson
 Sally and James Gambrill
 Arlyn and Edward L. Gardner
 Alexis Gelber and
 Mark Whitaker
 Reverend Carlson Gerdau
 Dr. Claude Ghez
 Mr. Gregory F. Gilmartin
 Jerry Gladstein
 Edythe and Mike Gladstein
 Drs. Jack and Joy Glaser



Bruce S. and Suzie Kovner



Jerry I. Speyer, Katherine Farley, and Valery Gergiev



Henry R. and Marie Josée Kravis



Louis Brause, Michael and Seren Shvo, Larry A. Silverstein, Gregg L. Schenker, Clive Gillinson, and Earle S. Altman



The Sound of Music leadership, sponsor, and cast

Ciril and Suzanne Godec
 Rabbi Barat Ellman and Jay Golan
 Virginia and Martin Gold
 Ms. Roanne Goldfein
 Susan L. Goldfine MD
 Ms. Miriam Goldman
 Patricia and Bernard Goldstein
 I. Michael Goodman and Judith Uman
 The Honorable Roy M. Goodman
 Maggi and David Gordon
 Mr. Brian Gorman
 Dr. Harold Gotthelf
 Mr. and Mrs. Harry E. Gould Jr.
 Rivka Greenberg
 Mr. Jonathan K. Greenburg and Ms. Elizabeth Ely
 Mrs. Jean Greenfield
 Mr. and Mrs. James L. Greenwald
 Mr. and Mrs. Mark Gregorio
 Mr. Keith Griffin
 Mr. and Mrs. Mark Grinis
 Ms. Jane Gross
 Mrs. Carol Grossman
 Mr. and Mrs. Leonard Gruenberg
 Mrs. Marit G. Gruson
 Ms. Gunilla N. Haac
 Ms. Nohra Haime
 Carol Hall and Leonard Majzlin in honor of Josephine Renzulli
 Anne and John Hall
 Mimi Halpern
 Ms. Janice M. Hamilton
 Dr. Bjorn and Catherine Hanson
 Susan T. Harris
 Dr. Gail Hashimoto
 Barbara Haws and William Josephson
 Mr. Frank Heller and Mr. Christian F. Steiner
 Edward I. Herbst
 Dr. Gemzel A. Hernandez Martinez MD
 Marifé Hernandez and Joel Bell
 Terry Stamler Herst in memory of Sylvia Fisch Stamler Ginsberg
 Mr. and Mrs. Don Hewitt
 Joan and William Hickey

Adria and Donald Hillman
 Ann Hinkley and Phil Bannes
 Ms. Susan B. Hirschhorn and Mr. Arthur M. Klebanoff
 Ms. Susan E. Hochberg
 Drs. Ira R. and Ruth W. Hoffman
 Judith M. and Richard S. Hoffman
 Pamela J. Hoiles
 Elizabeth Holland and Ronald Vogel
 Ms. Joan Holmes
 Steven and Lesli Hornstock
 Mr. and Mrs. Frederic K. Howard
 Mr. and Mrs. William R. Huff
 Mr. Timothy Hughes
 Mary I. and John E. Hull
 Michael Jozef Israels and Maija-Sarmite Jansons
 Carol T. Ivanick
 Mr. Andrew Jackson and Mr. Dale Michael Lovelock
 John Mary Bernard Jacobs Foundation
 Marti and Ray Jacobs
 The Nathan P. Jacobs Foundation
 Ms. Susan G. Jacoby
 Mr. and Mrs. Morton L. Janklow
 Mr. and Mrs. Floyd H. Jayson
 Andreas and Nele Jessel
 Mr. Robert D. Jezowski
 Ms. Frances Johnson
 Mr. and Mrs. Donald Jonas
 Mr. Darrell Jones
 JTS Fund at the New York Community Trust
 Robert Jurgrau
 Elliott Kaback and Patricia Woodard
 Mr. Connie Kaiserman Robinson and Mr. Steven Robinson
 Diana J. Kalman
 Leonard and Alice Kandell
 Janice Kang
 Dr. Sylvia Karasu
 Karma Foundation
 Ms. Sharon Karmazin
 Joseph and Audrey Kartiganer
 Elliot and Adrienne Katz

Mr. Neil C. Katz
 Mr. Stephen C. Kaye
 Mr. and Mrs. Earle W. Kazis
 Mr. Thomas F. Kearns Jr.
 Mr. William S. Keating
 Mary and Howard Kelberg
 Ms. Gail Kendall
 Ms. Edythe Kenner
 Ms. Amy Khoudari and Ms. Frances Greenstein
 Mr. John H. Kilbourne
 Ms. Mary E. Kirk
 Dr. Mark M. Klebanov
 Lisa Klein and Timothy Kinsella
 Mr. James Klosty
 Mr. Robert Knakal
 Mr. and Mrs. Winthrop Knowlton
 Dr. June H. Koizumi
 Judith and Jonathan Kolker
 Mr. and Mrs. Charles Kolozsvary
 Mr. Tyler Korff
 Helen and Jules Kornblau / The Kornblau Family Foundation
 Yelena Kourtei and Alex Zakashanskiy
 Mr. Jonathan Kowolik
 Daniel and Joan Kram
 Mr. Alan M. Krause
 Dr. and Mrs. Paul Krawitz
 Caroline and Mark Krentzman
 Ms. Alexandra Krofta-Jones
 Dorothy Kryger
 Herbert and Dorothy Kunstadt
 Sheldon and Rita Kwiat
 Ms. Elissa LaBagnara
 Mr. and Mrs. Joseph Lagana
 Mr. and Mrs. James Lally
 Sheila and Bill Lambert
 Mr. and Mrs. Fernand Lamesch
 Mr. and Mrs. W. Loeber Landau
 Mr. Steven E. Lane
 Mr. Jonathan Larsen
 Henna Ong and Peter D. Lawrence
 Ms. Melissa Leapman
 Dr. Ben H. Lee
 Dorothy Lee and Victor Han
 Mr. and Mrs. Robert E. Lee III
 William Lee
 Harris I. Lehrer

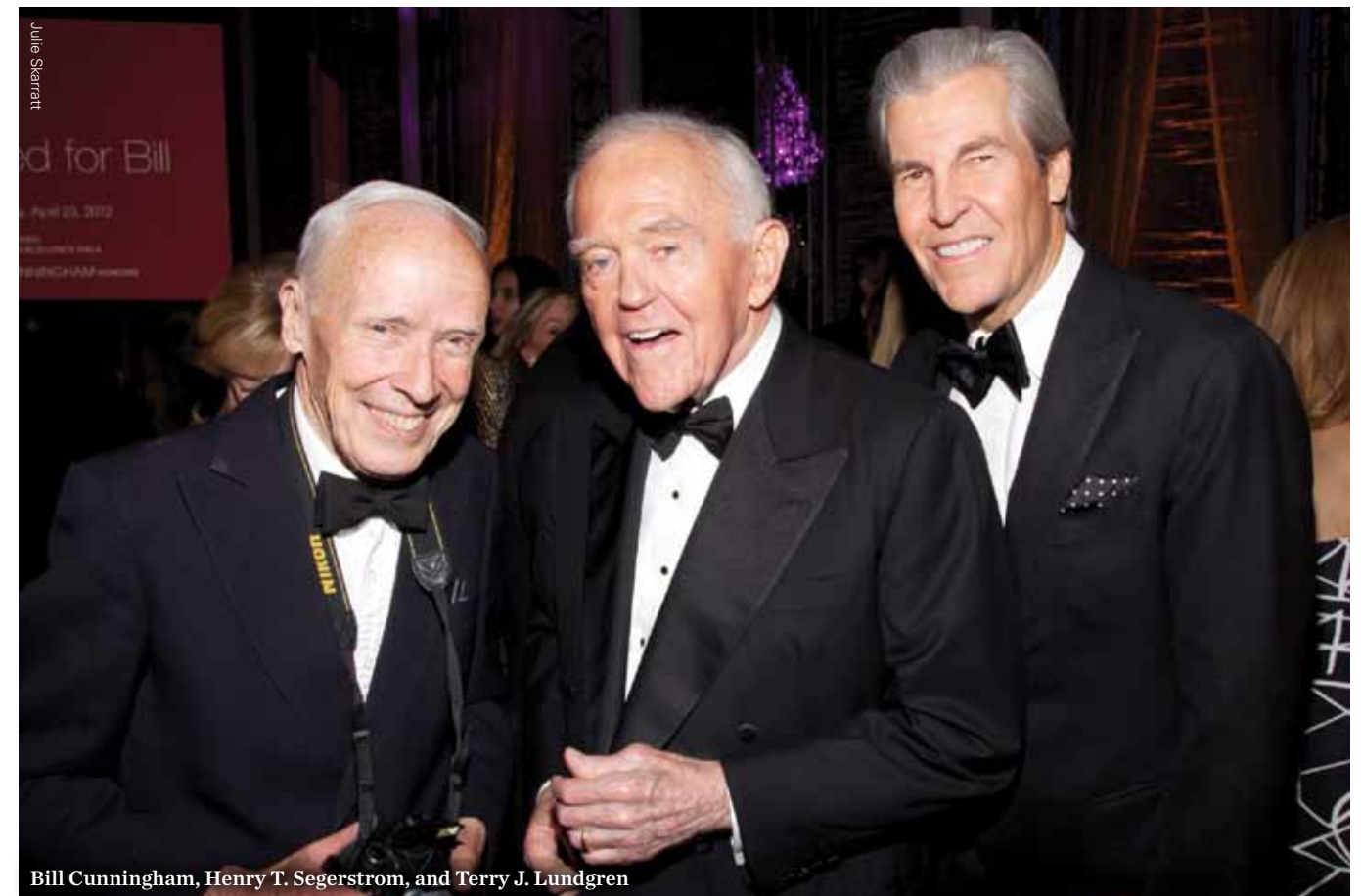
Ms. Carol Leibenson
 Mr. and Mrs. Jacques E. Lennon
 In memoriam of Samene W. Lesser
 Mr. Lionel Leventhal
 Mr. Kenneth D. Levien and Ms. Debra Torres
 Mr. and Mrs. Jerry Levin
 Noel Levine
 Leslie and Jim Levy
 Marcia and William Levy
 Margaret and Oscar Lewisohn
 Beth Lieberman MD and Carl Lieberman MD
 Mr. and Mrs. Samuel H. Lindenbaum
 jpl
 Margot and Robert Linton
 Arthur D. Little and Jann E. Leeming
 Mr. Jose Llamas
 Mr. Anthony Lombardo
 Mrs. Joan C. Long
 Mr. and Mrs. Sherif Lotfi
 Ilene and Edward Lowenthal
 Joyce Feinberg Luchtenberg
 Lundsten-O'Donnell Advisory Group
 Dr. Laura Lustig
 Mr. and Mrs. Merritt M. Lutz
 Mrs. Maria N. Lyras
 Mr. Archie Mac Gregor
 Angus and Monaise MacDonald
 Ms. Loraine Machiz
 Mr. David Maguire
 Richard H. M. and Gail Lowe Maidman
 Mrs. Susan Malloy
 Ms. Virginia Mancini
 Judith and Michael Margulies
 Alexander R. and Hedvig Margulis
 Baroness Mariuccia Zerilli-Marimo
 Ms. Monica Markowicz
 Edwina and Marvin Marks
 Mr. Michael V.P. Marks
 Mr. and Mrs. David E. Marrus
 Ms. Donna E. Marshall
 Mr. and Mrs. Shigeki Masui

Mr. Kingsley Matthew
 Marc and Meera Mayer
 Mr. Joseph F. McCrindle
 Rosemarie and Robert E. McGrath
 Mr. Danny McHatton and Ms. Heather Strekal
 Ms. Christina McInerney
 Kathleen A. McKenna
 Mr. and Mrs. Martin McKerrow
 Mr. Ryan D. McNaughton
 Dr. Gail and Dr. Allen Meisel
 Ms. Joyce Menschel
 Dr. Ricardo Mesa-Tejada and Dr. Amy Mesa-Jonassen
 Mr. Edward J. Miller and Ms. Carolyn Cohen
 Ms. Ellen Miller
 Mr. and Mrs. Everett B. Miller III
 Irwin and Frances Miller
 Mr. and Mrs. Jonathan Miller
 Mr. and Mrs. Robert E. Mims
 Mr. and Mrs. Gerald Mintz
 Sandra and Lowell Mintz
 Mr. and Mrs. Steven Miron
 Mr. Eben Moglen
 Karl Moller
 Teresa and Martin Monas, in honor of Barbara Cook
 Mr. and Mrs. Daniel Montilla
 Ms. Barbara Moore
 Dr. Diana Moore
 Judy and Tom Moore

Amarath Foundation
 Cathy Carr and William Moran Jr.
 Paula and Gerard Munera Foundation
 Mr. Stefano Natella
 Mr. and Mrs. George A. Needham
 Margaret and Richard Neimeth
 Mr. and Mrs. Mitchell J. Nelson
 Mrs. Raphael Nenner
 Ms. Susanna Neumann
 In memory of Gabor Neumann
 William and Julianna Obeid
 Mr. John E. Oden
 Ms. Dianne O'Donnell
 Mr. and Mrs. Harold H. Oertell
 Mr. and Mrs. Kobi Offer
 Daniel and Rebecca Okrent
 Mr. Morris A. Orden
 Mr. David Orr and Mr. Brant Wong
 Dr. Anthony Paciello and Dr. Dianne Rose
 Mr. and Mrs. Alex B. Pagel
 Mrs. Hannah C. Pakula
 Michael and Gabrielle Palitz
 Mrs. Frank Papp
 Dr. and Mrs. Simon Parisier
 Mr. and Mrs. David Parker
 Lori and Lee Parks

Parnassus Foundation / Jane and Raphael Bernstein
 Mr. and Mrs. Adolfo Patron
 The Patterson Family
 Rita and Daniel Paul
 David B. Pearce M.D.
 Mrs. Stephen M. Peck
 Arnold S. Penner Esq. and Madaleine Berley
 Barbara and Louis Perlmutter
 Jerilyn and Brian Perman
 Ms. Antonia P. Pew
 Mr. Mark Pick
 Evan Picoult
 Penny and Claudio Pincus
 Burton Yale Pines and Helene Brenner
 John A. Pirovano
 Mr. and Mrs. James Pohlman
 Ms. Tara E. Polen
 Ms. M. Terri Poli and Mr. J. Craig Weakley
 Mindy Pollack
 Mr. and Mrs. Sidney J. Pollack
 Mr. Myles Pollin
 Mr. Robert Poulos
 Dr. Robert Press
 Mrs. Jessie Hunter Price
 Mr. Josh Prottas
 Mark Ptashne and Lucy Gordon
 Stephen S. Rabinowitz Esq.
 Jack Radgowski
 Mr. Kirk August Radke

William Raff / Mizuho USA Foundation
 Charles J. Raubicheck and Ann S. Macdonald
 Isabella del Frate Rayburn
 Mr. Gregory R. Reed
 Dana and Richard Reimer
 Ms. Catherine A. Rein
 Ms. Denice Helman Rein
 The Karl F. Reuling Fund
 Mrs. Sibylle Reyniak
 Nataly and Toby Ritter
 Pilar and Stephen Robert
 Kirk and Judith Robinson
 Sondra Kurtin Robinson
 Mr. and Mrs. Gerald T. Rolfe
 Mr. and Mrs. Kenneth Roman
 Paulette and Joseph M. Rose
 Mr. and Mrs. Joseph Rosen
 Mrs. Liz Rosen
 Susan Pinsky and Marc Rosen
 Mr. and Mrs. Philip Rosen
 Mr. and Mrs. Joseph B. Rosenblatt
 Dr. Rosemary Purrazzella and Dr. Marc Rosenblum
 Mr. James H. Rosenfield
 James R. and Frederica Rosenfield Foundation
 Robert Rosenkranz and Alexandra Munroe
 Judith and Michael Rosenthal
 Barbara and Alan Rosenzweig



Bill Cunningham, Henry T. Segerstrom, and Terry J. Lundgren



Martha and Robert I. Lipp, and David Robertson

Susan and Edward C. Forst

Mitsuko and David Rosinus
 Mr. Darius Ross
 Clara and Irwin Roth
 Michael and Juliet Rubenstein
 Jacqueline and George Rubin
 Mark and Tracy Rudd
 Mr. Eric C. Rudin
 Mr. and Mrs. William M. Rudolf
 Jon Rupp
 Mr. and Mrs. William J. Sales
 Dr. and Mrs. Eduardo A. Salvati
 Alan Salz and Brad Whitehurst
 Mr. and Mrs. Suresh Sani
 Mr. Ray Santelises
 Anna Maria Sarmento
 Jack and Marianne Sauter
 Mr. and Mrs. James Schadt
 Mr. Antoine Schetritt
 Mr. and Mrs. Gerhard Schulmeyer
 Mr. Béla Schwartz and
 Ms. June Zimmerman
 Ms. Barbara A. Scott and Ms.
 Shirley E. Scott
 Mr. and Mrs. William C. Scott
 NoraLee and Jon Sedmak
 Mr. and Mrs. Herbert L. Seegal
 Janet Z. Segal and Family
 Mrs. Richard Selle
 Barbara and Kenneth Seplow
 Nathan and Vivian Serota
 Dr. Wales Shao
 Selma Shapiro and
 James H. Silberman
 Mr. Stephen J. Shapiro and
 Dr. Amy Attas

Irene and Fred Shen
 Marion and William Shulevitz
 Mr. and Mrs. Marvin Shulsky
 Mr. David M. Siegel and Ms. Dana
 Matsushita
 Dr. Ellen Silverstein
 Mark E. and Roberta K. Simon
 Mr. and Mrs. James B. Sitrick
 Ms. Samantha Smith
 Katherine and Kenneth Snelson
 Mr. and Mrs. Gilbert L. Snyder
 Ms. Denise R. Sobel
 Mr. Dimitri Sogoloff
 Dr. Helen Sogoloff
 Dr. Merwin Geffen and
 Dr. Norman Soloman
 Mr. Jason Soloway
 Mr. and Mrs. Paul Soros
 Dr. Thomas A. Sos and
 Dr. Shelley Wertheim
 Mrs. Colleen Spencer
 Mr. and Mrs. Joseph M. Stafford
 Dr. Axel Stawski
 Sissy and Gary Stein
 Linda B. Stern
 Leonore and Walter Stern
 Mr. and Mrs. Trevor Stewart
 Mr. and Mrs. Dennis Swanson
 Mr. and Mrs. I. David Swawite
 Gloria and Philip Talkow
 Mr. and Mrs. David J.
 Tananbaum
 Mr. and Mrs. Laurence Tarica
 Mr. and Mrs. Henry Taub
 Mr. and Mrs. Willard B. Taylor

Priscilla and Jerome Teich
 Mr. and Mrs. Barron Tenny
 Elise C. and Marvin B. Tepper
 Mr. and Mrs. Robert J. Thomson
 Mr. and Mrs. Petr A. Thorson
 Robert and Jane Toll
 Mr. Michael Tomasko IV
 Mr. Michael Tubbs
 Gerald F. Tucci
 Ms. Helen Sonnenberg Tucker
 Mr. and Mrs. John Tully
 Gil Turchin and Indigo
 Lindsey Turner
 Ms. Caroline Urvater
 Mr. and Mrs. Jean-Paul Valles
 Mr. and Mrs. William J. vanden
 Heuvel
 Ms. Nancy F. Vardakis
 Mr. and Mrs. Raymond W.
 Vickers
 The Rudolph and Lentilhon G.
 von Fluegge Foundation, Inc.
 Ms. Ruth M. Wagner
 Susan Walker and Harry Salwen
 Ms. Nora Ann Wallace and
 Mr. Jack Nusbaum
 Terilynn and Jeff Walsh
 Mrs. Cecille Wasserman
 Evelene Wechsler
 Rebecca and William Weeks
 Sandra and George Weiksner
 Marie-Hélène Weill
 James L. Weinberg
 Mr. and Mrs. Michael F. Weinberg
 Miss Regine Weiner

Mr. and Mrs. Martin S. Weinstein
 Mr. and Mrs. Stephen H.
 Weinstein
 Mr. and Mrs. Peter Weiss
 Linda Weiss
 Elizabeth and Joel S. Weissman
 Joan Weltz and Arthur Field
 Mr. and Mrs. Robert R. Wiener
 Mr. and Mrs. Mitchell Williams
 Mr. Richard M. Winn III
 Ms. Judy Witt
 Mr. and Mrs. Irving M. Wolbrom
 Jacqueline and Cary Wolf
 Mary C. Wolf
 Mr. and Mrs. William T. Wolf
 The Honorable and Mrs. Carl S.
 Wolfson
 Mr. James M. Wolin
 Corey Worcester and
 Yasmine Legendre
 Mr. and Mrs. Jonathan Miller
 Mrs. Ruth Wright
 Mr. and Dr. Leonard H. Yablon
 Mr. George M. Yeager
 Ms. Shirley Young
 Alice F. Yurke and
 Robert H. Davis Jr.
 Ada Zambetti
 Ms. Gloria Zeche
 Merryll and Charles Zegar
 Baroness Marruccia
 Zerilli-Marimo
 Anonymous (21)

Corporations

\$100,000 and above

Bank of America
 China Merchants Bank
 Deloitte LLP
 Ernst & Young LLP
 KPMG LLP
 The McGraw-Hill Companies
 PwC
 Sony Corporation of America
 Target
 United

\$50,000 to \$99,999

Chubb Group of Insurance Companies
 DeWitt Stern Group, Inc.
 Duff & Phelps
 MetLife Foundation

\$30,000 to \$49,999

Aon Risk Services
 Cartier
 Mitsubishi Corporation (Americas)
 Toyota
 The Walt Disney Company
 Wells Fargo

\$20,000 to \$29,999

Ameriprise Financial
 Breguet
 The Estée Lauder Companies Inc.
 Macy's
 Pfizer Inc.



Emmanuel Perrin, Joan Weill, Guillaume Alix, and Sanford I. Weill



Carnegie Hall salutes Bank of America, proud season sponsor of the 2011–2012 season.

\$12,000 to \$19,999

BBDO Worldwide
 Credit Suisse
 Kawasaki Good Times Foundation
 UBS

\$6,000 to \$11,999

Arnhold and S. Bleichroeder Holdings, Inc.
 Deutsche Grammophon & Decca Classics,
 U.S.
 ITOCHU International Inc.
 J.C.C. Fund of the Japanese Chamber of
 Commerce and Industry of New York,
 Inc.
 Johnson & Johnson
 Morgan Stanley
 Sumitomo Corporation of America
 Toshiba Corporation
 Xerox Corporation

\$2,500 to \$5,999

Colgate–Palmolive Company
 Mercer Health & Benefits
 Mitsubishi Heavy Industries America, Inc.
 Sojitz Corporation of America
 Yamaha Corporation of America

\$2,499 and below

Nippon Steel U.S.A., Inc.
 Opera New Jersey
 Richloom Fabrics Group, Inc.
 SD&A Teleservices, Inc.

Public Support

New York City Department of Cultural Affairs
 New York City Council
 New York City Department for the Aging
 New York City Department of Design and
 Construction
 New York City Department of Education
 Office of the Manhattan Borough President

New York State Council on the Arts

National Endowment for the Arts
 National Endowment for the Humanities
 United States Department of Education
 United States Department of State, Bureau of
 Education and Cultural Affairs



Suzy and Elihu Rose



Dinny and Lester S. Morse Jr., and Nancy Marks

Special Events

Wednesday, October 5, 2011
Carnegie Hall's Opening Night Gala
 Mariinsky Orchestra
 Valery Gergiev, Music Director and Conductor
 Yo-Yo Ma, Cello

Honorary Chairmen
 The Honorable John R. Beyrle,
 Ambassador of the United States to
 the Russian Federation
 His Excellency Sergey I. Kislyak,
 Ambassador of the Russian Federation
 to the United States

Gala Co-Chairmen
 Mercedes and Sid R. Bass
 Yoko Nagae Ceschina
 Frederick J. Iseman
 Marie-Josée and Henry R. Kravis
 Katherine Farley and Jerry I. Speyer,
 Tishman Speyer
 Joan and Sanford I. Weill
 Ann Ziff

Corporate Chairman
 Dennis M. Nally,
 Chairman, PricewaterhouseCoopers
 International Ltd.

Opening Night Gala Sponsor
 PwC

Gala Journal Sponsor
 Macy's and Bloomingdale's

Special thanks to *Town & Country* magazine

Monday, April 23, 2011
Medal of Excellence Gala
Honoring Bill Cunningham

Honorary Gala Chairs
 Joan and Sanford I. Weill

Gala Chairs
 Annette and Oscar de la Renta
 Sarah Jessica Parker

Gala Co-Chairs
 Mercedes T. Bass
 Diane von Furstenberg and Barry Diller
 Tina and Terry J. Lundgren
 Elizabeth and Henry T. Segerstrom

Gala Lead Sponsor
The New York Times

Musical Performance
 Vittorio Grigolo, Tenor
 Gerald Steichen, Piano

Tuesday, April 24, 2012
The Sound of Music
 Music by Richard Rodgers
 Lyrics by Oscar Hammerstein II
 Book by Howard Lindsay and Russel
 Crouse
 Suggested by "The Trapp Family Singers"
 by Maria Augusta Trapp
 Orchestrations by Robert Russell Bennett
 Choral, Dance, and Incidental Music
 Arranged by Trude Rittmann
 Concert Adaptation by David Ives

Produced by Carnegie Hall in association
 with Rodgers & Hammerstein: An
 Imagem Company.

Honorary Chairs
 His Excellency Ernst-Peter Brezovszky,
 Consul General of the Republic of Austria
 Anna E. Crouse
 Mary Rodgers Guettel
 Alice Hammerstein Mathias
 Johannes von Trapp

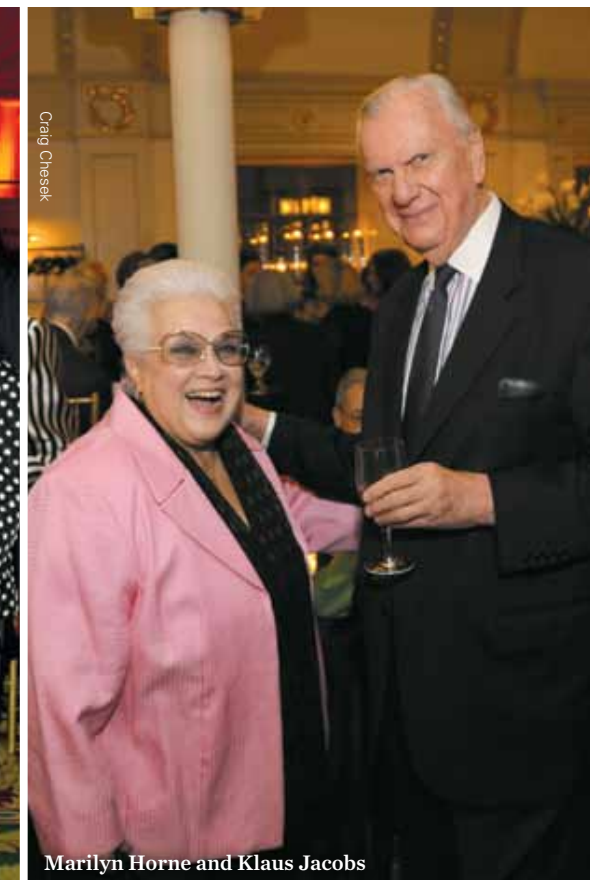
Corporate Chair
 Stephen R. Howe Jr.,
 Americas Managing Partner,
 Ernst & Young

Corporate Sponsor
 Ernst & Young

Co-Chairs
 Susan and Ed Forst
 Dinny and Lester Morse Jr.
 Nelle Nugent and Jolyon Stern



Sanford I. and Joan Weill, Ambassadors Sergey I. Kislyak and John R. Beyrle, Valery Gergiev, Yo-Yo Ma, Frederick J. Iseman, and Yoko Nagae Ceschina



Marilyn Horne and Klaus Jacobs

The Andrew Carnegie Society

The Andrew Carnegie Society honors donors who have made leadership gifts to support the restoration, renovation, and expansion of Carnegie Hall, and to augment the endowment fund in support of artistic programming and music education.

\$10,000,000 or more

City of New York
 Ronald O. Perelman Family Foundation
 Judith and Burton P. Resnick
 State of New York
 Joan and Sanford I. Weill
 Judy and Arthur Zankel
 Estate of Arthur Zankel

\$5,000,000 to \$9,999,999

Mr. and Mrs. Sid R. Bass
 Citi Foundation
 Mr. and Mrs. Richard A. Debs
 The Honorable and Mrs. Felix G. Rohatyn
 Susan and Elihu Rose Foundation
 Marge and Walter Scheuer and Family
 The Starr Foundation
 United States Department of Education

\$2,500,000 to \$4,999,999

Linda and Earle S. Altman
 Deloitte LLP
 The Horace W. Goldsmith Foundation
 Mr. and Mrs. Klaus Jacobs
 Anna-Maria and Stephen Kellen Foundation
 Mr. and Mrs. Robert I. Lipp
 Leni and Peter W. May
 Mr. and Mrs. Lester S. Morse Jr.
 Mr. and Mrs. William G. Parrett

William D. Rondina
 Mr. S. Donald Sussman
 Uris Brothers Foundation, Inc.
 Mr. and Mrs. James D. Wolfensohn

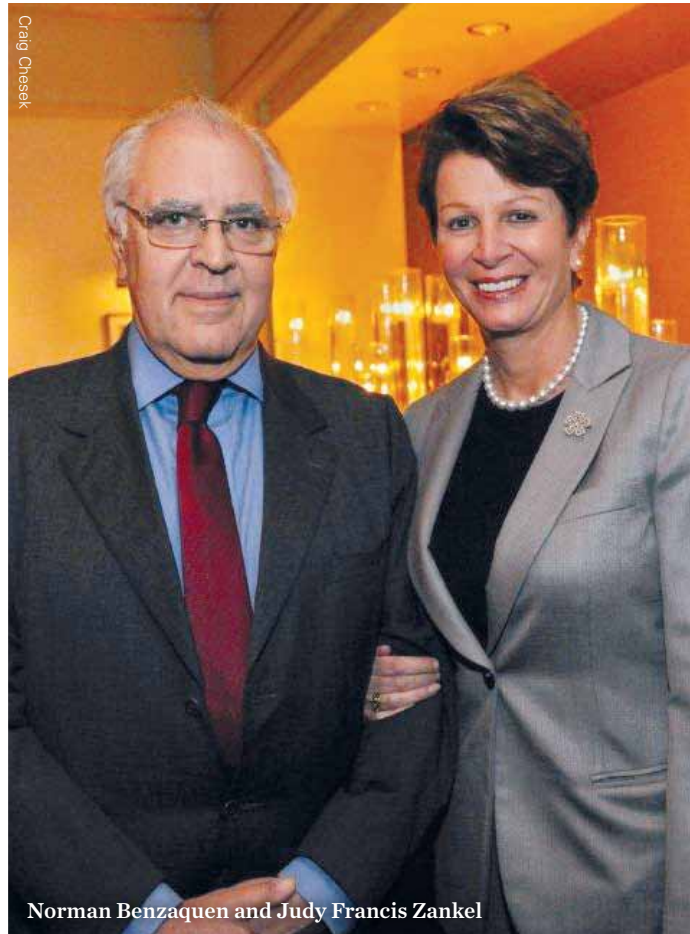
\$1,000,000 to \$2,499,999

The Vincent Astor Foundation
 Vincent Astor Trust
 AT&T
 Mr. and Mrs. Ralph M. Baruch
 Mr. and Mrs. Kenneth J. Bialkin / Skadden,
 Arps, Slate, Meagher & Flom
 Clarissa and Edgar Bronfman, Jr.
 Mr. and Mrs. Nicola Bulgari
 J.P. Morgan Chase & Co.
 Credit Suisse
 Estate of Joanne Toor Cummings
 Luella and Martin Davis
 Deutsche Bank
 The Irene Diamond Fund, Inc.
 The Diller-von Furstenberg Family
 Foundation
 Mr. and Mrs. Anthony B. Evnin
 Fomento Cultural Banamex Fund for
 International Education
 Mr. and Mrs. Gordon P. Getty
 Jean & Julia Goldwurm Memorial
 Foundation
 The William Randolph Hearst Foundation
 Claudia and Roberto Hernández Ramírez
 Maria Olivia and Jim Judelson

Gershon Kekst, Kekst and Company, Inc.
 Mark and Anla Cheng Kingdon Foundation
 KPMG LLP
 Mr. and Mrs. Henry R. Kravis
 The Kresge Foundation
 Mr. and Mrs. Terry J. Lundgren
 Macy's and Bloomingdales
 The Marc Haas and Helen Hotze Haas
 Foundations
 The Marma Foundation Fund for Youth
 Education
 The Andrew W. Mellon Foundation
 The Ambrose Monell Foundation
 Beth and Joshua Nash
 National Endowment for the Arts
 Natural Heritage Trust
 The Lizabeth and Frank Newman Charitable
 Foundation
 Pepsi-Cola Company
 John & Louise Reuter Trust
 The Rockefeller Foundation
 Pat and John Rosenwald
 Jack and Susan Rudin in memory of
 Lewis Rudin
 The Fan Fox and Leslie R. Samuels
 Foundation, Inc.
 Mrs. Julio Mario Santo Domingo
 Henry and Elizabeth Segerstrom
 Mr. and Mrs. Arthur T. Shorin
 Mr. and Mrs. Stanley S. Shuman



Sarah Jessica Parker, Oscar de la Renta, and Vittorio Grigolo



Norman Benzaquen and Judy Francis Zankel



Frederick J. Iseman and Princess Firyal of Jordan

Henry Shweid and Margaret Munzika Shweid Trust
Siemens Corporation
Mr. and Mrs. A. J. C. Smith
Sony Corporation of America & Sony Music Entertainment Inc.
Jerry I. Speyer and Katherine G. Farley
Mr. and Mrs. Isaac Stern
The Tishman Fund for Education through Technology
The Alice Tully Foundation
U.S. Department of Housing and Urban Development
Verizon Foundation
Alberto Vilar
Linda J. Wachner and Warnaco Inc.
The Weiler Fund
Mrs. Charles B. Wrightsman
Judy Francis Zankel
The Zankel Fund
Zankel Charitable Lead Trust
Ann Ziff
Anonymous

\$500,000 to \$999,999

American Express
Booth Ferris Foundation
CIBC Oppenheimer
Charles E. Culpeper Foundation, Inc.
The Eleanor Naylor Dana Charitable Trust
George David
Estate of Mrs. Eugenia Doll
Ernst & Young LLP

The Sherman Fairchild Foundation, Inc.
FleetBoston Financial
Fribourg Foundation Inc. and Mr. and Mrs. Raphael Recanati
Estate of Rita L. Gluck
The Marilyn Horne Foundation
Mr. and Mrs. Carl C. Icahn
Stella and Robert Jones
Gilbert and Lena Kaplan
The J.M. Kaplan Fund, Inc.
Diane G. Kranz
Lincoln-Mercury
Mr. and Mrs. Thomas G. Maheras
Marsh & McLennan Companies, Inc.
The McGraw-Hill Companies
Lauren and J. Ezra Merkin
Merrill Lynch & Co., Inc.
Metropolitan Life Foundation
Mrs. Milton Petrie
The William Petschek Family
The Pew Memorial Trust
The Pincus Family Fund
The Joe Plumeri Foundation
Laura and John Pomerantz
PwC
Mr. and Mrs. Oscar de la Renta
Rockefeller Brothers Fund
Suki and Herman Sandler
Mr. and Mrs. Peter William Schweitzer
The Peter Jay Sharp Foundation
The Sirus Fund
Miriam Solovieff
Estate of Marie Steiner

Suntory International Corp.
Viacom Inc.
Estate of Elisabeth P. Wendell
Mr. and Mrs. John W. Zick

\$250,000 to \$499,999

Andersen Worldwide
Automatic Data Processing, Inc. (ADP)
The Barker Welfare Foundation
Mr. and Mrs. Norton Belknap
CBS Inc.
Carl Jacobs Foundation
Cleary, Gottlieb, Steen & Hamilton
Mr. and Mrs. Paul J. Collins
The Leonard and Sophie Davis Foundation, Inc.
Mr. and Mrs. Charles H. Dyson
Exxon Corporation
Mr. and Mrs. Zachary Fisher
Mr. and Mrs. Wolfgang K. Flöttl
Genatt Associates, Inc.
The Florence Gould Foundation
The Armand Hammer Foundation
The Heckscher Foundation for Children
IBM Corporation
Geron P. Johnson Foundation, Inc.
Addie and Tom Jones
Helen and Martin Kimmel
John S. and James L. Knight Foundation
In memory of David and Nora Leseine
Bella and Leonard Linden
Sir Deryck and Lady Maughan
Betty Anne and James R. McManus

Henry and Lucy Moses Fund, Inc.
Rupert Murdoch
News America Publishing, Inc.
The New York Times Company Foundation, Inc.
Stavros Niarchos Foundation
Paramount Communications, Inc.
Pfizer Inc.
Philip Morris Companies Inc.
In memory of Martha and Eva Rautenberg
Reliance Group Holdings Inc.
Lloyd E. Rigler and Lawrence E. Deutsch
Billy Rose Foundation, Inc.
Jack and Susan Rudin Educational and Scholarship Fund
May and Samuel Rudin Family Foundation, Inc.
Estate of Darwin F. Schaub
S.H. and Helen R. Scheuer Family Foundation, Inc.
Dr. and Mrs. Thomas P. Sculco
Mr. and Mrs. Constantine Sidamon-Eristoff
Esther Simon Charitable Trust
Robert E. Simon Jr.
In honor of Rudolf G. and Inger-Ma Sonneborn
Estate of Maria M. Stivelman
Estate of Lucien Thomson
Tobishima Associates, Ltd.-The Stanhope Hotel
United States Department of State
United Technologies Corporation / Otis Elevator
Veronis Suhler Stevenson
Vivendi Universal
Craig and Connie Weatherup
John C. Whitehead
Mr. and Mrs. Lawrence A. Wien
Hyman, Mildred, Arthur and Elliot Wiener Family
Willkie Farr & Gallagher
Ivy Wu
Anonymous (1)

\$100,000 to \$249,999

ABD Securities Corporation
The Agvar Fund
Alcoa Foundation
ARCO Foundation
A.S.M. Mechanical Systems/Richard Minieri
Ilse and Hans J. Baer
In memory of Max and Hilde Baer
The Bank of New York
Arthur and Diane Belfer
Estate of Charlotte V. Bergen
The Siegfried and Josephine Bieber Foundation
The Blackstone Group
Mr. and Mrs. James A. Block
Mr. and Mrs. Leonard Block
The Bodman Foundation
Mr. and Mrs. Stanley M. Bogen
The Bristol-Myers Squibb Foundation, Inc.
Browning-Ferris Industries
The Burnett Foundation
Capital Cities/ABC, Inc.
Carnegie Corporation of New York
Mary and Michael Carpenter
Mr. and Mrs. David C. Clapp
The Constantiner Family
The Corbett Foundation
William H. Cosby Jr.
Barbara and Richard B. Dannenberg
Mrs. Evelyn Y. Davis
Evelyn Y. Davis Foundation
Deerpath Construction Corporation
Jim and Nancy Dine
Dresdner Bank North America
Drexel Burnham Lambert Foundation, Inc.
E.I. du Pont de Nemours and Company
Margot T. Egan
Mr. and Mrs. Alvin H. Einbender
Henry, Kamran and Frederick Elghanayan
The Essex House / Nikko Hotels International
The Fireman Hospitality Group
Ford Foundation

Forest Electric Corp.
Susan and Ed Forst / Forst Family Foundation
Nicholas C. Forstmann
Theodore J. Forstmann
Alan and Helene Fortunoff
Barbara W. Fox-Bordiga, in memory of Lord Bordiga
Thomas R. and Ingrid L. Frohlich Burns and Family
The L.W. Frohlich Charitable Trust
The Fuji Bank Ltd. / Fuji Bank and Trust Co.
Ira and Leonore S. Gershwin Philanthropic Trust
Clive and Penny Gillinson
The Howard Gilman Foundation
Irving S. Gilmore International Keyboard Festival
Edythe and Mathew Gladstein
Mr. Lewis L. Glucksman
Eugene and Emily Grant
Calla and Ralph Guild
Philip and Elaina Hampton
Stanley and Alice Harris
Daniel P. Hays
Estate of Dorothy H. Hirshon
Frederick J. Iseman
ITT Corporation
Ittleson Foundation, Inc.
Mr. Peter Jennings
Frederic C. Gerdau Johannpeter
The Robert Wood Johnson Jr. Charitable Trust
Paul A. Johnston
Rita J. and Stanley H. Kaplan Family Foundation, Inc.
In memory of Joseph P. Katz
Dr. and Mrs. Robert Kavesh
The Helen and Milton A. Kimmelman Foundation
Beth and Michael Klein
Andrea Klepetar-Fallek
Robert and Myra Kraft
Sallie Krawcheck and Gary Appel



Peter W. May, and Laura and John Pomerantz



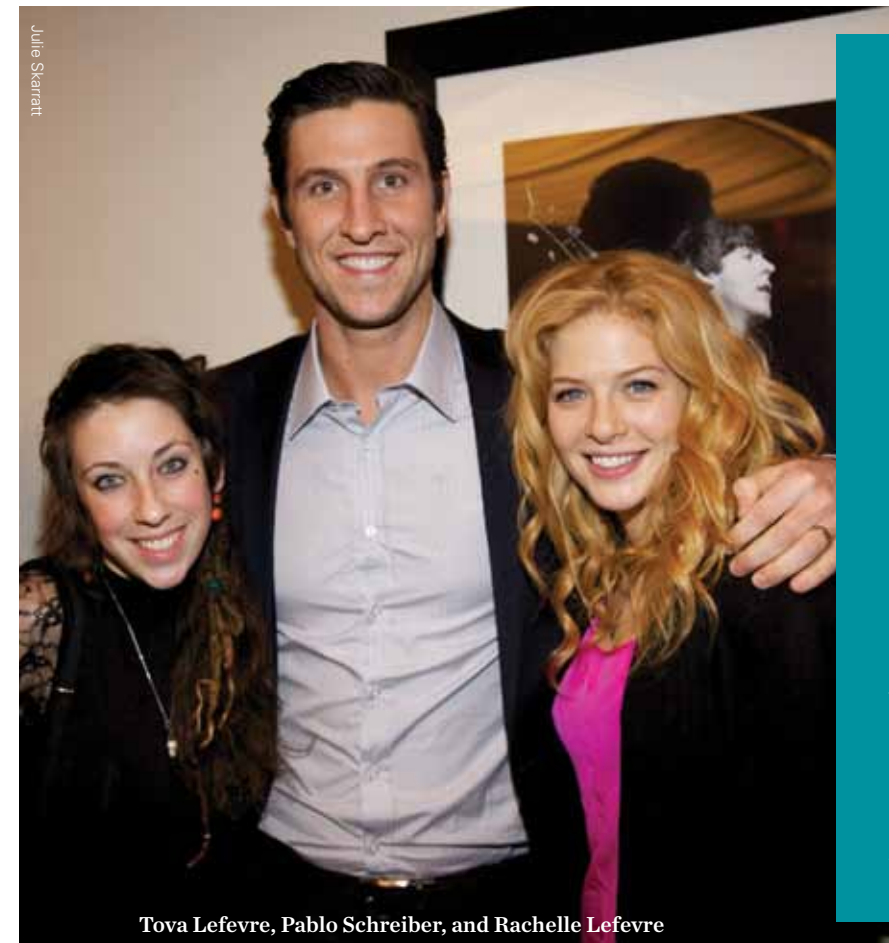
Marina Kellen French, Cynthia Sculco, Sir Simon Rattle, and Dr. Thomas P. Sculco

Mr. and Mrs. David Lloyd Kreeger
 Michael (Jack) Kugler
 Mr. and Mrs. Eugene M. Lang
 Mrs. William S. Lasdon
 The Lauder Foundation / Leonard and Evelyn Lauder Fund and Estée Lauder Inc.
 Robert and Elaine LeBuhn
 The Honorable and Mrs. Samuel J. LeFrak
 Lehman Brothers
 Mr. and Mrs. Henry J. Leir
 Mr. and Mrs. William M. Lese
 Robert H. Lessin and Naida Wharton Lessin
 Blanche and A. L. Levine and The A. L. Levine Foundation, Inc.
 Mr. and Mrs. George Lindemann
 Susan and Martin Lipton
 A.L. and Jennie L. Luria Foundation
 Mr. and Mrs. Michael T. Masin
 William and Helen Mazer
 MBNA America Bank, N.A.
 Mercedes-Benz of North America, Inc.
 Morton and Marlene Meyerson
 Mr. and Mrs. Edward H. Michaelsen
 Kathryn and Gilbert Miller Fund, Inc.
 Minnesota Orchestral Association
 Miyazaki Prefectural Arts Center
 Mobil Foundation, Inc.
 Morgan Stanley
 Nabisco Brands, Inc.
 Natasha Foundation
 Mr. and Mrs. Murray L. Nathan
 New Street Capital

The New York Community Trust
 New York State Council on the Arts
 Newmont Mining Corporation
 Diane Allen Nixon
 The Octavian Society
 Ogilvy & Mather Worldwide
 Pandick, Inc.
 Ernest E. Pinter Family and David B. Pinter Family
 Paul J. Plishner
 Mr. and Mrs. Shepard P. Pollack
 Polshek Partnership Architects
 Republic National Bank of New York
 Mr. and Mrs. David Rockefeller
 Mr. and Mrs. Laurance S. Rockefeller
 Mr. and Mrs. Daniel Rose
 Mr. and Mrs. Lewis Rudin
 Mrs. Lisabeth E. Schaub
 Schlumberger
 In memory of Mrs. Gertrude Schweitzer
 Peter Jay Sharp
 Ruth Collins Sharp
 The Shores Fund
 Jeanne and Herbert Siegel
 Frank Sinatra
 Herbert and Nell Singer
 Mary Jean and Frank P. Smeal Foundation
 Joan and Joel Smilow
 James Thurmond Smithgall
 Evelyn and Donald Spiro
 Mrs. Kathryn Steinberg
 Seymour Sternberg / New York Life Foundation

Daniel Swarovski Corporations
 In memory of Fran Taubkin
 Mr. and Mrs. Wilmer J. Thomas Jr.
 Laurence A. Tisch and Preston Robert Tisch
 Time Warner Inc.
 Tishman Realty & Construction Co., Inc.
 Miss Alice Tully
 Patricia and Lawrence Weinbach / Unisys Corporation
 Volvo North America Corporation
 Estate of Iva Walke
 Miriam and Ira D. Wallach Foundation
 Bruno Walter Memorial Foundation
 S. G. Warburg
 Warburg Pincus
 Theodore and Renée Weiler Foundation, Inc.
 George and Joyce Wein Foundation
 Westdeutsche Landesbank Girozentrale
 Alice Westphal Trust
 The Helen F. Whitaker Fund
 A.D. Winston Corporation
 Witco Corporation
 Chuck Prince and Peggy Wolff
 Mr. and Mrs. Ying-Sheung Wu
 The Xerox Foundation
 Mr. Uzi Zucker
 Mr. Mortimer B. Zuckerman
 Anonymous (2)

As of June 30, 2012



Tova Lefevre, Pablo Schreiber, and Rachelle Lefevre

Notables

The Notables, Carnegie Hall's membership and ticket program for music enthusiasts in their 20s and 30s, had another incredible season of star-studded events. Members attended a sold-out performance of A. R. Gurney's *Love Letters* featuring Renée Fleming and Alec Baldwin, celebrated Philip Glass's 75th birthday with a concert by the American Composers Orchestra and a meet-the-artist reception, and entered the magical musical world of Jim Henson with The New York Pops at the Third Annual Notables Family Party. The Eighth Annual Notable Occasion, generously underwritten by Nicola Bulgari, gave members access to a private concert by Ensemble d'Archi Fenaroli led by conductor Luigi Piovano with violinist Grazia Raimondi, followed by a cocktail and hors d'oeuvre reception. Our deepest gratitude also goes to Jimmy Zankel, a founding member of the Notables program who completed his tenure as chair this season and has been a driving force behind its success since its inception.



Ryan Brown, Jimmy Zankel, Mark Lamos, Adriana Herrera, Renée Fleming, A.R. Gurney, Alec Baldwin, Daniel Montilla, and Alexander Goldberg

Named Endowment Funds

Carnegie Hall honors those donors who have established endowment funds in support of concert and education programming.

Phyllis Barbash Education Fund
 The Judith and Anthony B. Evnin Endowment Fund for Young Artists
 Fomento Cultural Banamex Fund for International Education
 The William Randolph Hearst Endowment for Youth Education and Teacher Training
 Stella and Robert Jones Fund for Young Artists
 Marma Foundation Fund for Youth Education
 Merkin Family Ticket Fund
 Ruth Morse Fund for Vocal Excellence
 Edward Prager Endowment Fund for Jazz Artists
 Isaac Stern Education Fund
 Tishman Fund for Education through Technology

As of June 30, 2012



Clive Gillinson, Veronica Bulgari, Ilaria Bulgari, and Nicola Bulgari



Clive Gillinson, Mary Vertin, Lyss Stern, Brooke Shields, Amy Tarr, Caroline Dennis, Christin Rueger, and Sarina Sassoan Sanandaji

The Isaac Stern Society of Carnegie Hall

The Isaac Stern Society honors those individuals who have included Carnegie Hall in their long-range financial plans.

Mrs. Robert Allen
James and Cecilia Alsina
Marilyn Apelson
Isabel Arenas
Cole Ramsay Bader
Arlette Levy Baker
Kathleen Beakley
Dr. Kurt Becker and Joyce Weinstein
Norton Belknap
Davi Bernstein
Kenneth J. Bialkin
Jacqueline Hava Bregman
John Brewer
Sarita and Alex Broden
James A. Brophy Jr.
Lorraine Buch
Eliane Bukantz
Marjorie R. Bukzin
Rochelle Busch
Marlene Butler-Levine
Gloria Piechota Cahill
Castle B. Campbell
Elizabeth Carr
Georgia Carrington
Nora Carrol
Carol Casey
Richard B. Casper
The Reverend Chawanda Charae
Dr. Gilbert R. Cherrick
Vivien Ranschburg Clark
John D. Claypoole
Charles Edward Cole
Malcolm F. Crawford
Mr. and Mrs. Richard A. Debs
Steve and Connie Delehanty
David Dorfman
Domitilia M. dos Santos
Diane C. Dunne
Mrs. Charles H. Dyson
Dr. Joan Eliasoph
Stanley Epstein
Ms. Joan Costaña Ferioli
Stuart M. Fischman

Barbara W. Fox-Bordiga
Fredrick and Ruth Freud
Sheilah Purcell Garcia
Ellen Berland Gibbs
Louis Ginsberg
Dorothy S. Girard
Dalia Carmel Goldstein
Charles and Jane Goldman
Adele Mary Grossman
Jacquelyn C. Harvey
Alan Hewitt Family
Fred Holtz
Mr. W. E. H. Hutchison-Hall IV
Klaus and Karin Jacobs
William Josephson
Carolyn Kane
Theodore D. Karchuta
Mrs. Greta Katzauer
Dr. Robert A. Kavesh
Madeline Kerns
Dr. Jamie Koufman
June T. Leaman
Russell V. Lee
Linda Leven
Shirley Wilkins Liebowitz
Howard K. Lipan
A. Michael and Ruth C. Lipper
Catherine Lomuscio
Archie Mac Gregor
Thomas G. Maheras
William M. and Jacqueline Marks
Charles F. McCown
Christine McKeon
Phyllis Melhado
Michelle G. Miles
Andrew Miller
Dena Simone Moss
Dr. Teresa Mular
Sarah L. Nolin
Eleanore J. Nyilas
Doris M. Ohlsen
Emiko Okawa
Antonia Pew

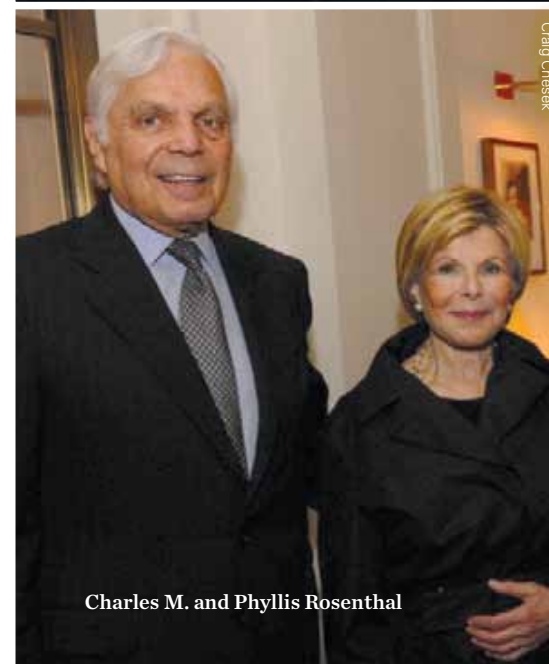
Burton Yale Pines and Helene Brenner
William Raff
William R. Reader, in memory of Lester Bowman
David L. Rhody
Susan W. Rose
Jay and Gladys Rosenthal
Carol and Daniel Ruffo
Ralph N. Sansbury
Karin C. Schiavone
Patrick J. Schiavone
Sue A. Schiller
Steven Schmidt
Hynda Schneiweiss
Myrna Schore
Rosa L. Schupbach
Carol Shedlin
Mr. and Mrs. A. J. C. Smith
Edwin and Ruby Smith
Dr. and Mrs. Peter Som
Edward P. Speiran
Donald Spoto
Gregory St. John and Gary McKay
Jan Stuart
Kenneth Sugarman
Dr. Stewart Taubkin
Dr. Gary Thom
Barbara Tomchin
Dr. Jeffrey H. Toney
Donna Jeanne Turnell, in memory of John C. Hamell
Eleanor Doblin Unger
Joan and Sanford I. Weill
Marshall M. Weinberg
In memory of Rowenna Wight White
Jeffrey Deane Williams
Elaine and Irving Wolbrom
Peter G. Wolff
Debbie Madesker Wolleman
Judy Francis Zankel
Mr. and Mrs. John Zick
Jonas Zweig
Anonymous (21)



Martina Arroyo and Wayne S. Brown



Suki Sandler and Charles J. Seidler



Charles M. and Phyllis Rosenthal

Committees and Councils

Executive Committee

Chair
Sanford I. Weill
Committee
Mercedes T. Bass
Kenneth J. Bialkin
Clarissa Alcock Bronfman
Richard A. Debs
Edward C. Forst
Klaus Jacobs
Sallie L. Krawcheck
Terry J. Lundgren
Thomas G. Maheras
Peter W. May
Joshua L. Nash
Ronald O. Perelman
Laura H. Pomerantz
Burton P. Resnick
S. Donald Sussman

Audit Committee

Chair
John W. Zick
Committee
Gregory T. Durant
Stephen R. Howe Jr.
Dennis M. Nally
William G. Parrett
Lawrence A. Weinbach

Building Committee

Chair
Burton P. Resnick
Committee
Edward C. Forst
Clive Gillinson
Klaus Jacobs

Nominating Committee

Chair
Peter W. May
Committee
Mercedes T. Bass
Sallie L. Krawcheck
Joshua L. Nash
Laura H. Pomerantz
Stanley S. Shuman

Development Committee

Chair
Thomas G. Maheras
Committee
Norton Belknap
Kenneth J. Bialkin
Harold McGraw III
Lester S. Morse Jr.
Laura H. Pomerantz
Suki Sandler

Development Subcommittees

Carnegie Hall Partnership Circle

Chair
Kenneth J. Bialkin
Committee
Norton Belknap
Demetrios A. Boutris
Richard A. Debs
The Honorable Roy M. Goodman
Jonathan Koslow
Michelle Morris
Lawrence A. Weinbach

Corporate Leadership Committee

Chair
Harold McGraw III

Committee
Gregory T. Durant
Stephen R. Howe Jr.
Yoshimi Inaba
Sallie L. Krawcheck
Terry J. Lundgren
Thomas G. Maheras
David J. Mandelbaum
Dennis M. Nally
Dr. Pamela Jane Newman
William G. Parrett
Christopher J. Roberts

Foundation Relations Council

Chair
Norton Belknap
Committee
Richard A. Debs
Judith W. Evnin
Linda R. Franciscovich
Catherine French
W. Loeber Landau
John Morning
Irving Sitnick

The Notables Committee

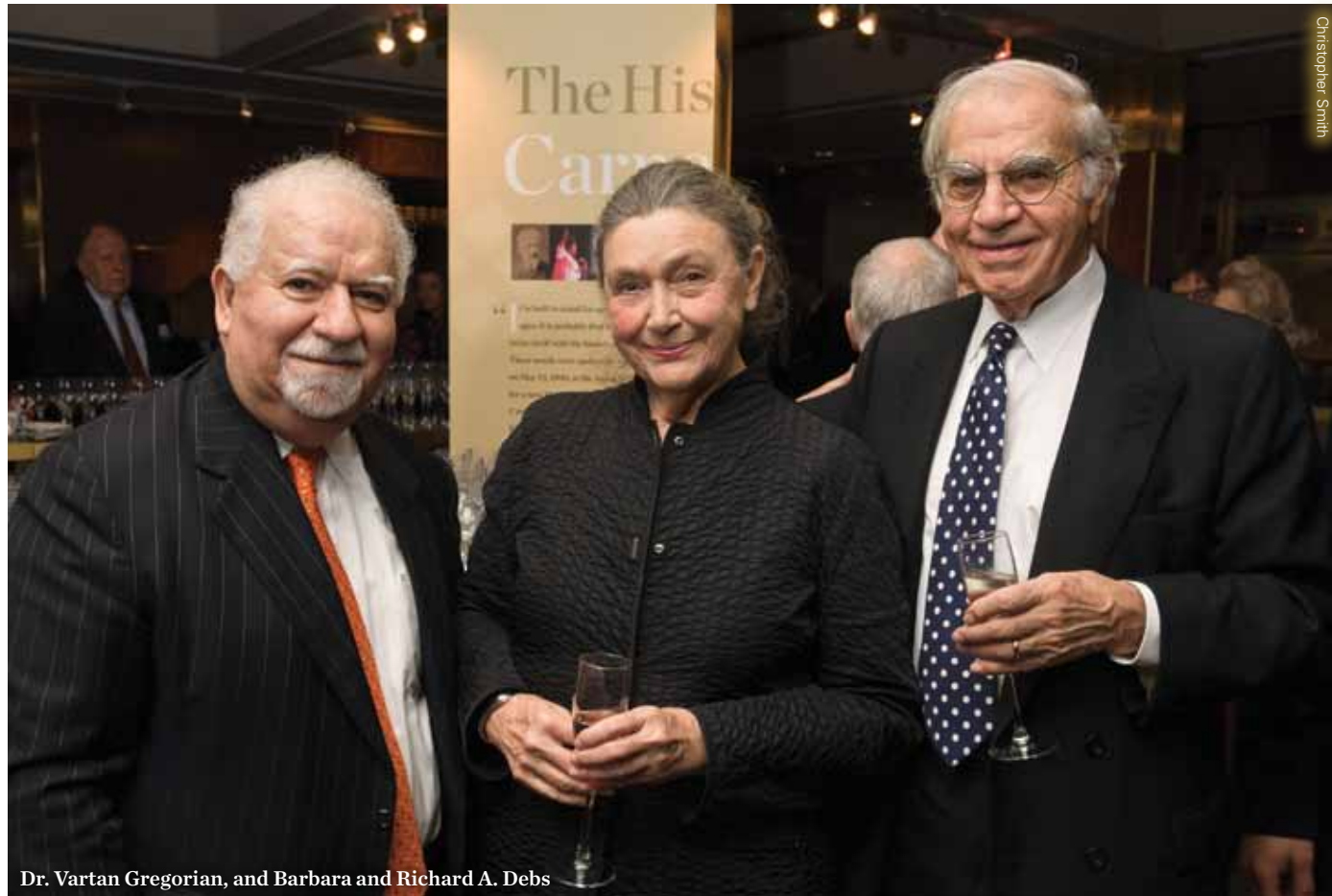
Co-Chairs
Cody Franchetti
Daniel Montilla
Jimmy Zankel

The Notables Executive Committee

Carrie Cloud
Mary Wible Vertin

The Notables Steering Committee

Wes Anderson
Joshua Bell
James G. Brooks Jr.
Ryan Brown
Veronica Bulgari
Soraya Darabi
Caroline Rocco Dennis



Dr. Vartan Gregorian, and Barbara and Richard A. Debs

Alexander Goldberg
 Brian Gorman
 Kimberly T. Hastie
 Adriana Herrera
 Jamie Johnson
 Jared Kushner
 Dylan Hale Lewis
 Audra McDonald
 Nico Muhly
 Mark Ronson
 Christin Barringer Rueger
 Sarina Sassoon Sanandaji
 Duncan Sheik
 Jason Soloway
 Amy Tarr

Patron Council

Chair

Suki Sandler

Committee

Norton Belknap
 Robert W. Jones
 Elaine LeBuhn
 Robert LeBuhn
 Tess Mateo
 Janet W. Prindle
 James H. Rosenfield
 Cynthia D. Sculco
 Charles J. Seidler
 Paul J. Sekhri
 Kathryn Steinberg

Vera Stern
 James B. Stewart Jr.
 Douglas D. Thomas
 Neil P. Westreich

Real Estate Council

Co-Chairs

Earle S. Altman
 Louis S. Brause
 Robert Kaufman
 Joel Leitner
 Lester S. Morse Jr.
 Burton P. Resnick
 Larry A. Silverstein

Membership Committee

Kyle Warner Blackmon
 David Brause
 Brian Gorman
 Stephanie Goto
 Josh Prottas
 Jonathan Resnick
 Gregg L. Schenker
 David S. Winter

Special Events Committee

Chair

Laura H. Pomerantz

Committee

Mickey Beyer

Clarissa Alcock Bronfman
 Judith W. Evin
 Arlene Genatt
 Katya Gorbatiouk
 Sharon King Hoge
 Linda M. Lindenbaum
 Leni May
 Dara Perlbander
 Joan Pickett
 Judith B. Resnick
 Sydney R. Shuman
 Vera Stern
 Adrienne Vittadini
 Joan H. Weill

Finance and Operations Committee

Co-Chairs

Edward C. Forst
 William G. Parrett

Committee

Gregory T. Durant
 Klaus Jacobs
 Gilbert Kaplan
 Robert I. Lipp
 Thomas G. Maheras
 Burton P. Resnick
 Stanley S. Shuman
 A. J. C. Smith

Investment Committee

Co-Chairs

Joshua L. Nash
 S. Donald Sussman

Committee

Richard A. Debs
 Edward C. Forst (ex officio)
 Robert W. Jones
 Thomas G. Maheras
 Frank N. Newman

New Ventures and Technologies Committee

Committee

Gilbert Kaplan
 Bella L. Linden
 Terry J. Lundgren
 Peter W. May
 Harold McGraw III
 Laura H. Pomerantz

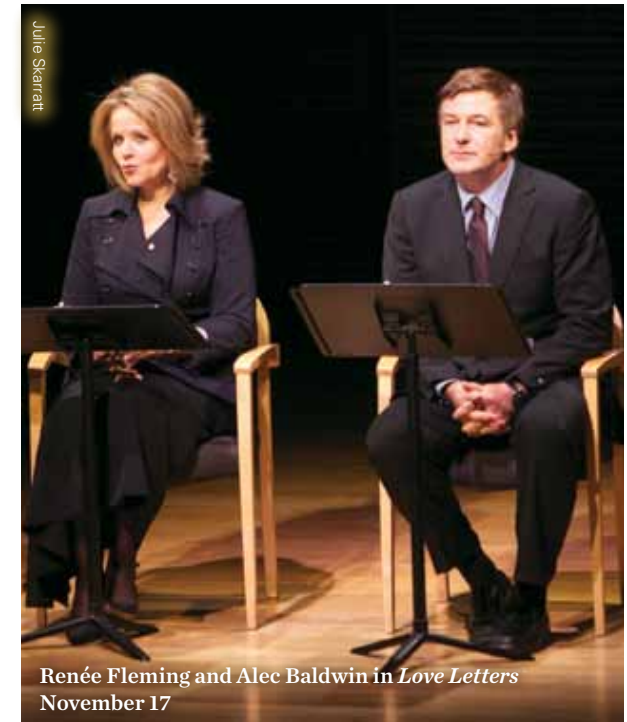
The Weill Music Institute Advisory Council

Co-Chairs

Yo-Yo Ma
 Joan H. Weill

Committee

Emanuel Ax
 Eric Booth
 Judith W. Evin
 Edward C. Forst (ex officio)
 Valery Gergiev
 Willie L. Hill Jr.
 Judith Jamison
 Lang Lang
 Joseph Polisi
 Hunter Rawlings III
 Susan W. Rose
 Thomas J. Schwarz
 Larry Scripp
 Catherine Stevens
 S. Donald Sussman
 Dawn Upshaw
 Diane Volk
 Sanford I. Weill (ex officio)
 Judy Francis Zankel



Renée Fleming and Alec Baldwin in *Love Letters*
 November 17



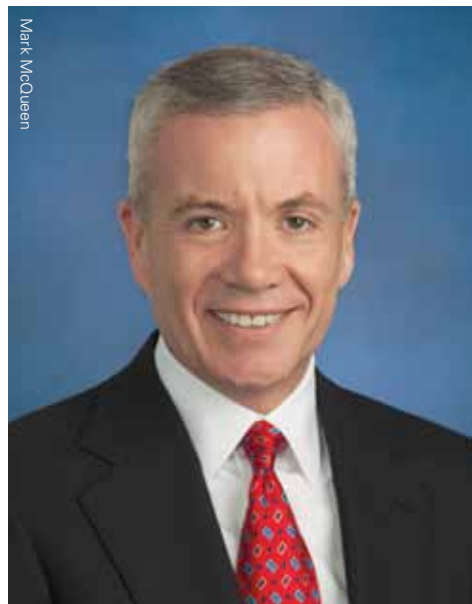
Digital Archives Project

This spring marked the launch of another major new initiative that solidifies Carnegie Hall's status as a leader in the world of music as we enter the 21st century. The Digital Archives Project will enable Carnegie Hall to digitize printed and audiovisual archival collections documenting its 120-year history, ensuring the preservation of these collections for future generations, and enabling greater access to researchers and other visitors both on-site and in the Archives online.

Our deepest appreciation for the major support of this initiative goes to the Carnegie Corporation of New York, which issued a challenge grant that was matched by the Susan and Elihu Rose Foundation with additional significant support from The Andrew W. Mellon Foundation. These generous gifts will enable Carnegie Hall to enter into the first major phase of this comprehensive project to be carried out over the next several years, with total project costs estimated at approximately \$5 million.

Containing more than 300,000 items, the Archives is the permanent and official source for Carnegie Hall's historical collections that document close to 50,000 performances and events in its three concert halls, construction of the building and its subsequent alterations, and the many notable artists, world figures, and personalities who have graced its stages. The Digital Archives Project represents a new chapter in the development of the Archives, creating a dynamic repository designed to house digital legacy collections and to capture new content and materials developed by Carnegie Hall in support of its artistic and educational initiatives.

Treasurer's Review



Carnegie Hall sustained its strong financial position in fiscal year 2012, successfully presenting musical performances of the highest quality, creating innovative education and community programs that served an increased number of people, and making meaningful improvements to its landmark building, all while continuing to navigate a challenging world economic environment.

Complementing approximately 180 performances presented by Carnegie Hall on its three stages were education and community programs that served more than 300,000 people in New York City, across the US, and around the globe, a reach made possible, in part, through productive partnerships with other cultural organizations and technology. The groundwork was also laid for a new national educational initiative, the National Youth Orchestra of the United States of America, which will launch in full next year. Operating expenses increased by 4% over the previous year, from \$71.4 million to \$74.3 million, reflecting overall growth of the institution across all programs and activities. On a cash basis, Carnegie Hall balanced its program expenditures with contributions and operating revenues in fiscal year 2012, a season marked by sustained ticket sales for Carnegie Hall presentations and strong income from rental events.

Charitable giving from individuals, corporations, and foundations was strong in fiscal year 2012. Reflecting a calendar of fewer and smaller special events, overall contributions supporting annual operations for the year stood at \$22.8 million, a 6% decrease from fiscal year 2011. Looking back by one additional year, fiscal year

2012's comparative fundraising results were \$800,000 higher than those reported in fiscal year 2010, demonstrating the ongoing generous show of support from which Carnegie Hall has benefited in recent years. In addition, pledges received for new major multi-year gifts for future years—including those from The Andrew W. Mellon Foundation, Carnegie Corporation of New York, The Rockefeller Foundation, and The Irene Diamond Fund, Inc.—will be vital in their support of long-term projects, and the growth and development of Carnegie Hall's vision for the 21st century.

Overall, net assets stood at \$420 million as of June 30, 2012, compared to \$428 million in the previous year. Included in net assets are endowment net assets of \$249 million at year end, compared to \$261 million as of June 30, 2011. While Carnegie Hall, like most other non-profits, faced headwinds in the financial markets, its overall investments decreased modestly by .6% in fiscal year 2012, a return consistent with endowments of a similar size as per the NACUBO-Commonfund Study of Endowments®. The endowment return in fiscal year 2011 resulted in a 17% increase. Carnegie Hall's endowment draw supporting operations for fiscal year 2012 was \$12.4 million, compared to \$12 million in fiscal year 2011, following the institution's established spending policy which appropriates a distribution of 5%, calculated on a preceding 20-quarter moving average of the fair market of endowment investments. Carnegie Hall's endowment received increased contributions of \$1.9 million in fiscal year 2012 as compared to \$1.1 million in fiscal year 2011.

Within fiscal year 2012, Standard & Poor's Rating Service affirmed Carnegie Hall's A+ rating on both its Series 2009 bonds and issuer credit rating, citing a strong history of fundraising, good operating revenue diversity, a history of balanced budgetary operations, and a financially supportive board of directors. Excellent progress was also made on the Studio Towers Renovation Project, which will improve the Hall's backstage areas and create a new education wing on upper floors in support of Carnegie Hall's mission, making the building more accessible to the public than ever before. With overall costs estimated at \$224.5 million, the project is expected to be completed on schedule by 2014, financed by public and private support as well as from a portion of the proceeds from Carnegie Hall's Series 2009 bonds.

All we have accomplished over the past year is a reflection of the generosity and dedication of our donors and audience, the excellent work of the Carnegie Hall staff, and the entire Carnegie Hall family. We thank you for this invaluable support as we continue to work together to guarantee that Carnegie Hall remains a place that is treasured and enjoyed for generations to come.

Edward C. Forst
Treasurer

A copy of the latest annual financial report filed with the New York Department of Law may be obtained by writing to Attorney General, State of New York, Charities Bureau, 120 Broadway, New York, NY 10271, or Carnegie Hall, 881 Seventh Avenue, New York, NY 10019-3210.

Carnegie Hall files annual financial statements and continuing disclosure statements with the Municipal Securities Rulemaking Board for its bonds issued through The Trust for Cultural Resources of the City of New York (Series 2009A-Carnegie Hall). Information is available at <http://emma.msrb.org>.

Consolidated Balance Sheet

The Carnegie Hall Corporation and The Carnegie Hall Society, Inc.

	June 30, 2012	June 30, 2011
Assets		
Cash and cash equivalents	\$13,398,000	18,124,000
Contributions receivable, net	52,300,000	76,020,000
Prepaid expenses and other assets	4,830,000	3,652,000
Funds held by Trustee	36,000	8,930,000
Investments	284,194,000	293,166,000
Fixed assets, net	209,934,000	167,226,000
Total assets	\$564,692,000	567,118,000
Liabilities		
Advance sale of tickets and other liabilities	\$17,448,000	18,444,000
Accrued pension benefit obligation	13,834,000	7,158,000
Loans payable—greater than one year	112,934,000	113,710,000
Total liabilities	\$144,216,000	139,312,000
Net Assets		
Unrestricted	\$58,493,000	77,845,000
Temporarily restricted	180,453,000	170,320,000
Permanently restricted	181,530,000	179,641,000
Total net assets	\$420,476,000	427,806,000
Total liabilities and net assets	\$564,692,000	567,118,000

Administrative Staff

Executive Office

Clive Gillinson
Executive and Artistic Director

Catherine Schaefer
Executive Assistant

Administration

Richard Malenka
Director

Susanna Prough
Manager, Capital Projects

Melissa Monterosso
Coordinator

Building Operations

Hugh McCloy
Chief Engineer

Anthony Regno
Facilities Supervisor

Tamika Reid
Manager

Anthony J. Strano
Director, Security

Event Services

Sarah Zeltzer
Manager

Human Resources

Catherine Casella
Director

Allison Meistrell
HR Generalist

Sharice Y. Joseph
HR Coordinator

Office Services

Stephanie Cole-Jacobs
Office Manager

Wesner Bazin
Coordinator

Juan Juarez
Mail Clerk

Mary Ellen Philbin
Receptionist

Development

Susan J. Brady
Director

Jamie Santamour
Associate, Development Services

Christopher Stuart
Database Coordinator

Brian Huff
Coordinator

Hilary Kromnick
Administrative Assistant

Institutional Giving

Corporate Relations and Sponsorships

Dori Fisher
Director

Tiffany Rosenquist de la Torre
Manager

Siri Comeau
Emily Hom
Assistants

Foundation Relations

Callie Herzog
Manager

Asim Khan
Julia MacAllister
Associates

Samantha Toy
Administrative Assistant

Government Relations

David Freudenthal
Director

Tomoko Shannon
Jessica Silverman
Associates

Grace Gaylord
Administrative Assistant

Individual Giving

Patron Program

Don Spalding
Director, Patron Program and Membership

Kate Vereb
Assistant Director

Luke Gay
Manager, Notables

Haylee Zirman
Administrative Assistant

Friends

Andrew Rubinstein
Associate Director

Karen Chia
Manager

Salley Kim
Administrative Assistant

Planned Gifts and Special Projects

Carl K. Steffes
Director

Laurie Barowski
Associate

Charlotte Daniel
Assistant

Special Events

Kathryn Macky
Director

Ginger Vallen
Associate Director

Ashley Hogan
William Reid
Assistants

Finance

Theodore E. Phillips
Director of Finance

Christine Offermann
Manager, Accounting

Aris Siliverdis
Manager, Financial Reporting

Caroline Bonilla
Corporate Accountant

Matthew Eng
Accountant, Society

Maria Loor
Payroll Administrator

Pamela Harris
Analyst, Hall Operations

Tom Huynh
Analyst, Programming

Alvina Yeung
Coordinator

Information Technology and Interactive Services

Aaron Levine
Chief Information Officer

Morgan Weiss
Administrative Assistant

Information Technology and New Media

Denise Brooks
Director

Afshin Mahabadi
Associate Director, Information Systems

Ed Denning
Manager, Business Applications

Simon Basyuk
Manager, Database Administration

James Boncek
Project Manager

Bronwen Stine
Associate Director, Information Technology

Tak Lai
Manager, Network Architecture

Nick Calamuso
Senior Technical Analyst

Jason Bitman
IT Engineer

Marketing and Creative Services

Naomi Grabel
Director

Tosaporn Sasitorn
Gift Shop Manager

Kate Haar-Lyons
Marketing Coordinator

Publishing and Creative Services

Kathleen Schiaparelli
Director

Alex Ammar
Managing Editor

J. Adams Holman
Assistant Managing Editor

Jay Goodwin
Associate Editor

Carol Ann Cheung
Editorial Assistant

Bernard Hallstein
Senior Art Director

Cherry Liu
Assistant Art Director

Evelyn Ochoa
Graphics Manager

Michael Mallon
Hiromi Park
Senior Graphic Designers

Ross Bonanno
Production Director

Lai Fun Tsui
Production Associate Manager

Marketing and Visitor Services

David Wyeth
Director

Jennifer Hempel
Associate Director, Marketing and Business Development

Michael Naess
Marketing Manager

Amanda Villegas
Jesse Yang
Marketing Associates

Ryan Ervin
Manager, Volunteers and Visitor Services

Yeji Cha
Associate

eStrategy

Christopher Gruits
Director

Seamus O'Reilly
Web Content Manager

Carter Hallett
Electronic Marketing Manager

Katie Wudel
Associate Web Producer

Adrienne Stortz
Coordinator

Artistic Planning and Operations

Anna Weber
General Manager, Artistic and Operations

Luyuan Xing
Administrative Assistant

Artistic Planning

Jeremy Geffen
Director

Kathy Schuman
Artistic Administrator

Lea Slusher
Director, Artistic Projects

Andrew Byrne
Manager, Festivals and Special Projects

Patrick Sharpe
Associate Director, Artistic Projects

Alicia Jones
Manager, Program Planning

Jennifer Flores
Manager, Artistic Projects

Leslie Leung
Associate Manager, Program Planning

Victoria King
Associate Manager, Artistic Planning

Wendy Magro
Associate Manager, Artistic Projects

Debby King
Artist Liaison

DeAnna Sherer
Coordinator

Booking

Elaine Georges
Director

Denise Alfaroni
Assistant Director

David Suss
Coordinator

Hall Operations

Joseph Schmaderer
Director of Operations

James A. Gerald
House Manager

Jill Marshall
Associate House Manager

James Badrak
Director of Production

Rachel S. Davis
Thomas F. Eirman

John Lant
Production / Stage Managers

Frank Cardillo
Joshua Reynolds
Jenny Weber
Performance Managers

Leszek Wojcik
Recording Studio Manager

Steven C. Brody
Peter Huitzacua
Operations Managers

Joseph C. Reid
Head Usher

Tim Hays
Administrative Assistant, HMO

Stage Crew

Ken Beltrone
James Csollany
Carpenters

John Cardinale
John Goodson
Electricians

Dennis O'Connell
Properties Manager

The Academy—a program of Carnegie Hall, The Juilliard School, and the Weill Music Institute

Amy Rhodes
Director

Betsie Becker
Manager, Alumni Projects

Lisa McCullough
Manager, Operations

Deanna Kennett
Education and Community Associate Manager

Sue Landis
Program Associate Manager

Public Relations

Synneve Carlino
Director

Matthew Carlson
Assistant Director

Corinne Zadik
Manager

Tonya Bell-Green
Manager

Nate Bachhuber
Samantha Nemeth
Associates

Katlyn Morahan
Coordinator

Veronica Algie
Assistant

Rose Museum and Archives

Gino Francesconi
Museum Director and Archivist

Kathleen Sabogal
Manager, Archives

Robert Hudson
Associate Archivist

Ticketing Services

Timmy Wasley
Director

Mike McCarthy
Treasurer

Joseph Coster
Assistant Treasurer

Valeri Olson
Manager, Subscriptions

Jonathan Bradley
Manager, CarnegieCharge

Terri L. Brown
Ticketing Performance Manager

Rayna Bourke
Ticket Services Manager

Kathleen Maresco
Patron Desk Manager

Erin Etheridge
Associate, Ticketing Services

Nick Singh
Associate Manager, CarnegieCharge

Tatiana Balaban
Associate, CarnegieCharge

Michael Kumor
Beth Nerich

John Nesbitt
Matthew Poulos
Patricia Smith
Joseph Wittleder
Box Office Representatives

Dennette Dyton
Jasmine Reed
Subscription Representatives

Claudia Julian
Kavita Mahabir
Antoinette Rogers
Teresa Wimmer
CarnegieCharge Representatives

Weill Music Institute

Sarah Johnson
Director

Misty Tolle
Director, School and Family Programs

Ann Gregg
Director, Community Programs

Christopher Amos
Director, Educational Media and Technology

Douglas Beck
Director, Professional Programs

Phillip Bravo
Manager, Educational Partnerships

Yasmin de Soiza
Manager, Educational Media and Technology

Rebecca Hinkle
Manager, The Achievement Program

Anthea Jackson
Manager, Professional Programs

Amy Kirkland
Manager, Elementary School Programs

Aaron Siegel
Manager, Secondary and Middle School Programs

Elizabeth Snodgrass
Manager, Community Programs

Yelena Ingberg
Application Support Specialist

Leah Hollingsworth
Associate, Community Programs

Heather Briere
Associate, School and Family Programs

Erica Westcott
Associate, Secondary School Programs

Elizabeth Ferguson
Coordinator, Community Programs

Jonathon Hampton
Coordinator, Educational Media and Technology

Stephanie Rodousakis
Coordinator, Educational Partnerships

Joseph Soucy
Coordinator, Professional Programs

Laura Costa
Coordinator, Elementary School Programs

Sam Livingston
Coordinator, Education Programs

Tiffany Ortiz
Administrative Assistant, Community Programs

The Richard and Barbara Debs Composer's Chair

Kajja Saariaho

As of June 30, 2012

Music Ambassadors

Carnegie Hall's corps of 163 friendly and informative Music Ambassadors gave just over 4,430 hours of service as information guides, docents, outreach, and staff support volunteers.

Special thanks to the Music Ambassadors who gave over 100 hours of their time during the 2011–2012 season.

Jeffrey Albert
Susan Bein

Betty Burr
Genny Imas

Beatrice Parides
Lotte Rosenthal

Lee Solomon
Jerome E. Straus

Elaine Usoskin
Manana Zonen

We salute our Music Ambassadors who gave at least 20 hours during the 2011–2012 season.

Luisa F. Alarcon
Fran Alongi
Lucille A. Alonzo
Linda Amster
Andrea L. Becker
Judith King Binney
Haruyo Bonnell
Robert Braff
Rita Brandt
La Verne Bruce
Leslie Burgin
Castle Campbell
Judith L. Cohen
Fred Conroy
Kathy L. Dean
Isabelle Dejean

Sandy Dickson
Nishtha Dwivedi
Peter Eaton
Ellen Ensig-Brodsky
Miriam Epstein
Marta Fisch
Jacqueline J. Fisher
Clarie L. Freimann
Jerry Gladstein
Samuel Goldman
Leah Green
Rita R. Greenstein
Vladimir Gutkin
Donald Harris
Francine Haselkorn
Ida Henderson

Robert Jacklosky
Marian R. Jordan
Elliott Kaback
Bebe Kamerling
Bela Kaplan
David W. Kinne
Ruth Klein
Sandra Kornblit
Anita Krilov
Galina Kudinskaya
Esther Lamis
Barbara Lang
Daniel Linares
Beatrice Livetsky
Jean Mascia
Kendra V. McDaniel

Sheila Navarro
Vincent Navarro
Lilya Nirenberg
Alain Ober
Vicky Oelbaum
John Ong
Lydia Page
Evgenia Pevzner
Barbara Pollack
Bernice Ravitz
Robin Roper
Stephanie Rosenblatt
Alice G. Rothblum
Emily Simeo
Beverly Stern
Norman Strauss

Constance V. Testa
Barbara Todres
Fumi Usuki
Sheila Vincent
Rosily Vogelgesang
Betty Unger
Min Wang
Lillian Wechsler
Florence Weinberg
Sheila Weinstein
Arthur White
Irwin Wolin
Miyako Yamaguchi
Lilia Yanushpolsky
Gloria Young
Xinhan-Jane Zhang

Carnegie Hall's mission is to present extraordinary music and musicians on the three stages of this legendary hall, to bring the transformative power of music to the widest possible audience, to provide visionary education programs, and to foster the future of music through the cultivation of new works, artists, and audiences.



Stefan Cohen

Family Concert: Celso Duarte | December 11



Pete Checchia

Bang on a Can All-Stars | November 5



Jack Vartogian

Ben Allison | February 3



Steve J. Sherman

Itzhak Perlman with the European Union Youth Orchestra
April 18



Jack Vartogian

Cheikh Lô | April 20

CARNEGIE HALL

881 Seventh Avenue, New York, NY 10019
212-903-9600 | carnegiehall.org