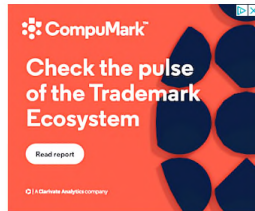


A Baby Koala is called Joey

'Joey' is a specific term that is used to state a koala offspring or a koala baby. Therefore, a baby koala is called a Joey. However, the term Joey is not particularly associated with the koala babies only but in fact all the marsupial babies are also known as the joeys. For example babies of kangaroos, opossums, wombats, red kangaroos etc. are also termed as the joeys.

“ A baby koala is called a "Koala Joey" while "Joey" is a common term for the babies of all the marsupial animals from Australia.

This further means that a complete term to specifically state a koala baby is not just a joey but a koala joey. Moreover, stating just a joey will make things confused and it will not confirm which marsupial animal you are referring to and the overall concept will become a bit vague.



Baby Koala
KOALA JOEY

Kangaroo Baby
KANGAROO JOEY

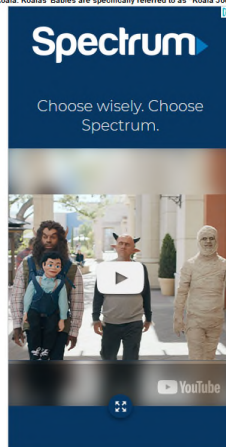
Baby Wombat
WOMBAT JOEY

Opossum Baby
OPPOSSUM JOEY

Marsupial Animal Babies
JOEYS



Picture of a Baby Koala. Koalas' babies are specifically referred to as "Koala Joeys". Paula Longshore



Why the baby koalas and the other baby marsupials are called the joeys? The term 'Joey' is specifically reserved for the animal babies that are native to Australian natural habitat. Koalas are native to Australian natural habitat, therefore, their babies are also called the joeys.

“ The term "Joey" is specifically reserved for the animals that natively belong to Australian natural habitat.

Latest News

Population of Koalas

There are as many as 85,000 koalas across the continent of Australia. The Australian Koala Foundation has given a tentative figure of 47,000 to 85,000 for the wild koalas in Australia.

Marsupials vs. Placental Mammals

Both Marsupial and Placental mammals have many key differences from one another. Marsupial females having a pouch is the key differentiation when compared with the females of Placental Mammals.

Koalas are most popular animals in Australia

Koalas are considered as one of the most popular animals in Australia. People are aware of them and they regard Koalas as one of the cutest animal as well. Koalas are also harmless and peaceful animals of Australia.

Koalas are more popular as compared to Kangaroos

Koalas are more popular as compared to the Kangaroos within Australia. Even though Kangaroos are popular as Australia's national animals, but yet still Koalas still enjoy more popularity because of their cuteness and cuddliness.

Koalas & Fluffy ears

Koalas have one of the fluffiest ears of all the mammals. Koalas are also recognized on the basis of their big fluffy ears. They also offer good sense of hearing for koalas.

Koalas and their Dominant Nose

Koalas possess a dominant and unique nose on their face. The koala's nose appears to be spoon-shaped and black in color. Learn interesting features about the koala's nose.

Button Shaped Fascinating Eyes of the Koalas

Koalas possess button-shaped fascinating eyes which are very mysterious and adorable to look. Koalas rarely blink their eyes and they keep on staring at objects which attract them.

Core Recognizing Features of Koalas

Koalas can easily be recognized because of certain key features on their physical attributes. Koalas are recognizable through rounded ears, nose, and button-shaped eyes etc. Koalas color and fur also play a core role in terms of their recognition.

Koalas are the largest tree climbing Mammals in Australia - Koalas as Arboreal

Koalas are witnessed as the largest tree climbing mammals (Arboreal) throughout the continent of Australia. Koalas are bigger than Tree Kangaroos and also Opossum as well which are also big Arboreal.

Size Variations among Koalas

Koalas vary in terms of their size. A Koala living in one geographical location will have a different size as compared to the Koalas living in another geographical location. The habitat typically leads Koalas to vary their sizes.

Sizes of Koalas from Queensland, Australia

The Koalas from Queensland weigh around 9 kilograms. Queensland certainly does not offer an abundance food supply to the Koalas. Their weights and sizes are smaller because of the availability of the nutrition and vegetation available for them for as

Sizes of Koalas from Australia's Victorian Origin

Koalas living in Australia's Victorian Territory are bigger and they weigh around 14 kilograms. Koalas within Australia's Victorian territory are specifically awarded by nature with a very high degree of food supply, thereby, helping them as being we

Difference between Queensland and Victorian Koalas

The Koalas from Queensland and Victorian territory of Australia make a difference in terms of their size, fur coloring, and fur thickness. Koalas of Queensland are smaller. Koalas of Australia's Victorian Territory are bigger.

Average Weights of Male Koalas

Male Koalas are very huge. Minimum the Male Koalas weigh at least around 9 kilograms and at maximum they can gain a weight of around 18 kilograms. Victorian Male Koalas are weigh more than Queensland Male Koalas.

However, the exact origin of this word "Joey" is still not known. It is commonly believed that the word "Joey" also belongs to the Australian aboriginal languages. Kangaroo babies are believed to be one of the first babies to be called as "joys" by the historians in their books. Koalas on the other hand were discovered very late because of their shy personality, tree climbing behavior and to a greater extent sloth like lifestyle. Today, koalas are considered as the most popular animals across the continent of Australia.

Term "Joey"	Origin of "Joey"
ANIMAL BABIES FROM AUSTRALIA	NOT KNOWN
The Term "Joey"	Earliest Joys
AUSTRALIAN ABORIGINAL LANGUAGE	KANGAROO BABIES
Koala Joys	
MOST POPULAR ACROSS AUSTRALIA	



A baby Koala Joey emerges after 32 days of gestation period within her mother's womb. Bab Koala Joys are not very active at birth. *Paula Longshore*

Normally, a koala baby remains a joey as long as it stays with its mother. Even a relatively bigger koala staying with its mother is also called a joey. When a koala joey becomes a bit bigger it usually stays at the back of her mother by grabbing her fur.

“ A baby Koala as called a Joey as long as it stays with its mother. As soon as it leaves its mother after growing up; it is no longer called a Joey.

At this time a koala joey does not prefer to stay in the pouch which is too small for this grow-up koala joey. As soon as a koala joey leaves its mother at the age of almost 1 year; it is no longer called a joey. It is termed as an adult koala. Therefore, a baby koala remains a joey for the first 365 days of its life.

Weights of Female Koalas

Female Koalas are smaller in terms of weight and size. Female Koalas usually on average weigh around 7 Kilograms. Female Koalas from Queensland weigh around 5 Kilograms. Female Koalas from Australia's Victorian Territory weigh around 7 to 8 Kilogram.

Weighing Male vs Female Koalas

Male Koalas have more weight and size than the female Koalas. On average a Male Koala weighs around 11 Kilograms. A Female Koalas weigh around 6 to 9 Kilograms on average. Female and Male Koalas vary across Australia's Victorian and Queensland territ.

Male Koalas have Loudest of voice among all Australian Mammals

Male Koalas have loudest of voice among all the mammals across the continent of Australia. This loud voice helps the dominant male koalas to maintain their territory and also it helps them to attract female Koalas as well.

Origin of Koalas & their Evolution

Koalas have been living on earth (Australian continent) for almost 30 million years. However, the modern-day koalas only emerged about 4.5 to 2 million years ago.

Koalas Population increased at the end of 20th Century

Koalas' population throughout history experienced an increase and decrease. However, the 20th century marked the strongest population of Koalas that is still stable within the 21st century.

Historical Evolution of the Koalas - A Physical Perspective

Throughout the history of more than 30 million years Koalas have gone through a very little or no Physical evolution. Many researchers argue that throughout all the ages Koalas have maintained their original physical existence.

The Word Koala Means No Water

The word koala means "No Water" and the word (koala) itself belongs to the native and aboriginal languages of Australia where it also means "No Water" or "Lacking Water".

Koalas and their Aboriginal and Native Names

Koalas have at least 1 dozen native and aboriginal names and they all belong to Eastern Australia's native and aboriginal languages i.e., Kaola, Koala, Coolah and Koobor etc.

It Took 10 years for Aboriginal Australians to Spot and Recognize Koalas

Aboriginal and Native Australians recognized and specified Koalas after 10 years of their stay at the Australian continent. Before that Koalas were obscure to almost every human being in the world.

Koalas Live Hardest and Toughest Lives Among all animals

Koalas, Koalas and Tough Life, Koalas Food Problem, Koalas and Tooth Decay, Koalas and Energy, Koalas and defense

Koalas Tooth Decay through its Abrasive Diet

The koala's abrasive diet is chiefly responsible for its tooth-decaying. The process of tooth-decaying is more common within older koalas and at the end all koalas fall victim to it.

Koalas Diet is Fully Poisonous and Toxic

Koalas' diet is so much toxic and poisonous that a normal mammal can't survive over this diet. Koalas' diet is full of cyanide chemicals and compounds. Yet still Koalas have very strong stomach and liver to manage all of these poisons.

Koalas' Food Eucalyptus has Lower Nutrition

The Eucalyptus leaves offer lower nutritional value for koalas and it is just a miracle that koalas rely on the Eucalyptus leaves during their entire lifespan. Koalas are always low in terms of their body energy.

Koalas have Lower Energy Levels

Koalas possess lower energy levels and strength. This is the core reason that they spend most of their time while sleeping. Their food doesn't offer them much energy. More sleeping will help them to maintain energy levels. Koalas sleep 20 hours a day

Koalas and Eucalyptus Leaves

Koalas and the Eucalyptus diet are inseparable. In fact, Eucalyptus is the lifeline for the Koalas' existence and without it they can't even survive.

Koalas - When Occasionally Spotted on other Leaves for their Food

Koalas have been occasionally spotted on other trees as well and eating different leaves rather than Eucalyptus. For example Koalas have been specifically

KitchenAid

KitchenAid Metal Food Grinder Attachment (KSMMGA) KitchenAid Metal Food Grinder Attachment (KSMMGA)

Shop

A Koala Joey
IS CALLED A JOEY AS LONG AS IT STAYS WITH ITS MOTHER.

A Relatively Bigger Koala Bigger Koala Joeys
IS ALSO A JOEY, IF IT STAYS WITH MOTHER. STAY OUTSIDE THE POUCH

A Koala Joey Remains a Joey
FOR 365 DAYS (1 YEAR) PERIOD



Picture of a small Koala Joey. Koala Joeys are very small at the time of their births. Paula Longshore

FAMOUS
footwear

Feel on top of the world
in top Under Armour

SHOP NOW

A new born koala joey stays completely inside the pouch of its mother for almost 32 weeks. At this stage its whole body is under-developed and it goes through a basic development process. This is the most sensitive stage for a joey because without the pouch it cannot survive in the outer world.

“ A baby Koala Joey comes out of its mother pouch after 32 weeks. Before 32 weeks it entirely stays inside the pouch and is even non-visible.

Consequently, a new born joey is not visible for the 32 weeks of its life while onwards it starts exploring the world from the pouch and when it gains more strength it even comes out of the pouch and moves around the tree for food.

Walmart

KitchenAid

KitchenAid Metal Food Grinder Attachment (KSMMGA) KitchenAid Metal Food Grinder Attachment (KSMMGA)

Shop

located on the trees of Banksia, Acacia, Callitris, Hales and Metaleuca.

Koalas and Cyanide Compounds

Koalas diet specifically includes Cyanides. Cyanides are abundantly available within the leaves of the Eucalyptus tree. If a normal mammal will eat those cyanides, it just simply can't survive.

Why Koalas drink little or no Water?

Koalas drink either no water or they were rarely spotted drinking water. Koalas' water requirements are primarily accomplished through their diet (Eucalyptus leaves) which comprises of 65% water. Koalas are only spotted drinking water under extreme o

Koalas & their Advanced Digestive Mechanisms

Koalas possess such an advanced digestive system that it can easily extract energy from the poisonous Eucalyptus leaves. A normal herbivore's digestive system is incapable of tolerating the Eucalyptus leaves.

Slow Metabolism of Koalas

Koalas have slow Metabolism Rate. The food which the Koalas consume gets decomposed slowly once it reaches Koalas stomach because of slower metabolic activity. Slower Metabolism also helps Koalas to conserve their energy.

Why Koalas Sleep more than 20 Hours a Day?

Koalas sleep about more than 20 hours a day. Koalas have unusual sleeping habits. Koalas are also slow and sluggish. Koalas remain asleep to slow-down their metabolism rates and energy requirements.

Koalas Lack Energy and Strength

Koalas lack energy and strength. It wouldn't be wrong to consider them as defenseless. Koalas are slow and sluggish. The food which they consume offers very little level of energy and lower proteins.

Koala's Tooth from Growth till Tooth Decay

Koalas' each tooth grows steadily, however, after some time, because of grinding and combination of poisons and toxicants in Koalas food, their tooth decay starts. Young Koalas chew better (no tooth decay) as compared to the mature and elderly Koalas.

Young Koalas are Better Chewers as Compared to Mature and Elderly Koalas

Young Koalas are good chewers as compared to the mature and elderly Koalas. Elderly and mature Koalas are prone to tooth decay because of tooth grinding and the Eucalyptus leaves as their chosen food.

Why Most Koalas Die of Starvation?

Koalas usually die of Starvation. Sometimes, Koalas do not get enough food while other times, they are unable to chew the food rightly. The food which Koalas prefer contains very little nutritional value. There are many factors for Koalas' Starvation

Koalas and Dehydration

Koalas are also vulnerable to dehydration. The summers in Australia are very warm. This causes Koalas to be dehydrated. They rarely drink water and rely on their food for water. Moreover, deforestation is another reason for Koalas' dehydration.

Heat Exhaustion and Heat Strokes among Koalas

Suffering from heat Exhaustion and Heat Strokes is also very common among the Koalas. During Heat Strokes Koalas feel higher body temperature, higher heart beat and Koalas lose their consciousness as well.

Koalas' Small Brain

Koalas have one of the smallest brains among all the mammals on planet earth. The volume of their brain is almost 60% of total skull volume.

Do Koalas lack Intellectual Abilities?

Koalas despite being very cute lack intellectual abilities. Koalas also have one of the smallest brains of all the mammals on planet earth. Read more about koalas' lacking intellect.

Koalas and their Sense of Smell

Koalas have highly powerful sense of smell. Koalas can smell the Eucalyptus leaves from miles away. Koalas can differentiate between fresh leaves and the old leaves through smell. Koalas can also understand food's worth by smelling.

Koalas hate Dried Leaves

Koalas do not like dry leaves. Dry leaves carry less water contents in them for Koalas. Koalas hate dry leaves because they do not have enough calories to help them maintain their energy levels. Finally dry leaves lack proper nutrition for the Koalas

Koalas love Fresh Eucalyptus leaves as their

KOALA JOEY IN POUCH

32 WEEKS

Koala Joey's Basic Body Development
32 WEEKS

WITHOUT POUCH

A KOALA JOEY CANNOT SURVIVE

32 Weeks +
A KOALA JOEY EXPLORES OUTSIDE WORLD



A Baby Koala Joey stays entirely inside the pouch for the first 32 weeks of its life. After 32 weeks it explores the outside world and even comes out of the pouch as well. Photo courtesy of Liger Zoos

jtv
jewelry & love

Multicolor Watermelon Quartz 18k
Rose Gold Over Silver Ring 2.6...

SHOP NOW

Occasionally, koala twins are also born as well. In principle they should be called as the "Twin Koala Joeys". However, it has been observed that they are termed as koala twins only rather than the "Twin Koala Joeys". Therefore, in the case a mother koala gives birth to more than one joey, they are usually termed as koala twins, koala triplets or koala quadruplets etc.

“ When a Koala mother gives birth to twins, they are called as "Koala Twins" and the word joey is usually excluded by the authors.

Remember this is a very rare scenario because koala mothers only give birth to a single joey normally and we have found only 5 instances from past few years, where a koala mother has given birth to the koala twins and the author has explained them as koala twins rather than the koala twin joeys.

2 Koala Joeys
KOALA TWINS

3 Koala Joeys
KOALA TRIPLETS

4 Koala Joeys
KOALA QUADRUPLETS

Koala Twins
KOALA TWINS ARE VERY RARE WHILE TRIPLETS AND QUADRUPLETS HAVE NEVER BEEN WITNESSED.



More than one koala offspring at the time of birth are called koala twins or triplets depending on the numbers of births. Twin Koala Joeys are very rare. Photo courtesy of Paula Longshore

jtv
jewelry & love

KOALAS LOVE FRESH EUCALYPTUS LEAVES as their Food

Koalas love fresh Eucalyptus leaves. Koalas prefer fresh Eucalyptus leaves because they are good in nutrition and contain plenty of water inside them. Koalas prefer new leaves as compared to the older ones.

Koalas' Eucalyptus Leaves' Preferences during summers and Winters

Koalas' preferences for the Eucalyptus leaves may vary during summers and winters. During Summers Koalas may prefer slightly more fluid and water contents within Eucalyptus leaves, while in winters they might prefer less fluid and water contents.

Koalas' Preference for Leaves Having Higher Nitrogen Levels

Koalas prefer those Eucalyptus leaves that are higher within the nitrogen levels. It helps them to absorb more nutrients and it also provides them relatively higher nourishment as well.

Koalas Prefer Big Eucalyptus Trees and Love to Stay at Trees' tops.

Koalas prefer to stay at big Eucalyptus trees. Moreover, Koalas like to stay at the top branches of the trees which are their favorite zone and spot at the trees. Top of the tree provide fresh leaves for the koalas.

Koalas Prefer to Live in Areas that have Good Soil and Fertile Lands

Koalas mostly prefer those areas which has a very good soil quality. Therefore, fertile lands are the core preference for spotting Koalas' habitat. Australia is usually dry, but wherever there are fertile lands, Koalas can be easily spotted there.

Koalas' Per Day Food Consumption

Koalas consume almost 600 to 800 grams of Eucalyptus leaves per day. The food consumption within koalas may vary depending upon their size, temperature, gender and some other factors.

Koalas Food Consumption Depends upon their Body Size

Koalas' food intake and consumption specifically depends upon their body size. The bigger the size of the Koalas, the greater will be its food consumption and vice versa. Smaller Koalas also eat less as compared to the bigger Koalas.

Lactating Female Koalas Consume More Food as Compared to the Normal Female Koalas

Lactating female Koalas consume more food as compared to the normal female Koalas. Lactating female Koalas require more energy and more nutrition to ensure milk supply for the young Koalas.

Koalas Consume More Food during Winters as Compared to Summers

Koalas consume more food during winters as compared to the summer seasons. The reasons being the Koalas have to fight against the cold and will require higher energy levels; therefore, more food is always helpful as it ensures nutrition.

Female Koalas are very Selective Regarding their Leaf Selection and Food Consumption.

Female Koalas are very selective in terms of their leaf selection and their food consumption as well. Female koalas only select those eucalyptus leaves that are abundant in nitrogen levels for greater nutrition and energy.

A Baby Koala is called Joey

A baby Koala is called Joey. Normally all the babies of the Marsupials are called as Joeys. Koala babies are called as joeys as well and koala Joey is a specific term that is being used for the baby Koalas.

A Baby Koala Joey Lives in her Mother's Pouch for 8 to 9 Months

The koala joeys live inside their mother's pouch for almost 8 to 9 months. In the first 6 months they completely stay inside their mother's pouch while onwards they start looking and coming outside.

Gestation Period within Female Koalas

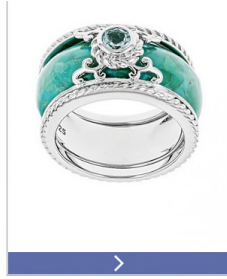
The female koalas have a gestation period of around 34 to 36 days. Even though koalas' gestation period is very short but it is one of the longest ones within the marsupial mammals.

Breeding Behaviors of the Female Koalas

During the breeding season, the female koalas exhibit an astonishing breeding behavior. Read various breeding behaviors of the female koalas when the breeding season is at its peak in Australia.

The Size of the Baby Koala Joey at the time of its Birth

Baby Koala Joeys are very small in terms of their size when they are born. At the time of their birth baby



A baby koala joey is one of the smallest of the newborn offspring amongst all the mammals. According to the experts, a baby koala is hardly 2 centimeter in length at the time of its birth. Even though this little joey is very small and under-developed, it still has the sense to move straight into the pouch of its mother.

“ A baby koala joey is almost 2 centimeters in size at the time of its birth. Therefore, the koala joeys are one of the smallest offsprings among mammals finally.

Therefore, a koala joey itself seeks the pouch of its mother at the time of its birth. Onwards, this joey at first completely hides itself from the rest of the world for 6 to 8 months and then after that it starts exploring the outside world from the pouch.



At the time of their birth, the koala joeys are extremely small (2 centimeters). Photo courtesy of Paula Longshore

jtv
jewelry & love

If you love jewelry, you'll love us.

SHOP NOW

Koala joeys are just around 12 millimeters. Baby koala joeys at the time of a birth are usually comparative to the size of the bees and small o

Weight of the Baby Koala Joey at the Time of its Birth

The weight of the Baby Koala Joey at the time of its birth is around 1 gram. However, some studies have shown that at the time of their birth the Koala Joey weigh less than 1 gram as well.

At Birth the Baby Koala Joey Travels from Cloaca into their Mother's Pouch

At the time of birth a Koala Joey has to travel from the Cloaca into the pouch of its mother. A Koala Joey slowly but steadily travels by itself with the help of its small limbs. It has a good sense of smell to identify its mother's pouch.

Newborn Koala Joey have Well Established Sense of Smell

Newborn Koala Joey have well established sense of smell. It helps Koala Joey to spot their mother's pouch and also teats as well to detect milk within the pouch.

Koala Joey keeps his Head inside its Mother's Pouch for 6 Months

A newborn Koala Joey always keeps its head inside its mother's pouch for about 6 months. During this period of time, it never sees the outside environment at all. Round about the 6 month, it becomes powerful enough to come outside.

Complete Shape and Body Development of the Koala Joey

A new born Koala Joey completes its development of body and shape after 6 months. A newborn Koala Joey is always under-developed at birth in terms of body development and shape.

Koala Joey's Mother Milk

Koala Joey's Mother milk is a source of life for all the Koala Joey. During the earlier days, this milk is full of carbohydrates, while latterly, this milk shows variation with more protein contents within it.

Pap - The first solid food of the Koala Joey

The koala joeys feed on pap as their first solid diet. Joey start feeding on pap from 6th month and onwards while pap is excreted by their mothers after pellets.

When Does Tooth Emerge for Baby Koala Joey?

Whenever, the baby Koala Joey reaches the age of 7 months, its tooth quickly start to emerge. By the time it research 1 year, it already develops perfect tooth for chewing eucalyptus leaves.

Aggressive Behavior of Mother Koalas towards their Joey

By nature mother koalas are very kind hearted rather than aggressive for their young koala Joey. Whenever a Koala Joey leaves, its mother, their mothers after 9 months, they become aggressive. Koalas are solitary, therefore, they have to be aggressive.

Koalas in Brisbane Australia

Koalas living in the Brisbane ranges of Australia enjoy more forest, eucalyptus leaves and food sources. Because of this abundance of food source, these koalas are bigger in size, breeding is more fertile and the population level is relatively high.

Queensland Offers Less Nutritional Values for Koalas

Queensland ranges in Australia offer relatively lower and lesser nutritional values for the Koalas. As a result of that the Koalas living in Queensland are relatively smaller, at stake and they also have lesser numbers too.

How long does Koalas live? Age of the Koala

The average age of a koala is around 13 years. Female Koalas live more (15 Years) than the male koalas (12 years). Maximum recorded age of a koala is 21 years in captivity.

Female Koalas Live More than Male Koalas

Female Koalas live more than male Koalas. This phenomenon is very strange as both the male and female koalas almost habitat on the same food within any territory. Therefore, it is very interesting to explore why female Koalas live more than male Koal.

What is the Average Age of the Male Koala?

The average age of the male Koalas is around 12 years. Victorian Male Koalas usually make it to 12 years, while the Queensland male koalas live for 10 year. Habitat and food availability can prove out to be decisive for male Koalas' average age.

Average Ages of the Female Koalas

The average ages of the female Koalas are around 16 to 17 years. Female Koalas from Australia's Victorian

ranges live more as compared to the female koalas from Queensland. At maximum female koalas are known to live for more than 20 years as well.

For How Long a Female Koala can Give Birth to the Koala Joeys?

At maximum female koalas can give birth at the age of 10 years. Usually the female koalas start giving birth to the young koala joeys from their 3rd year of the life.

How many times female koalas give birth?

During its entire lifespan, a female koala gives birth about seven (7) times. Maximum it can be eight (8) times and minimum it can give around three (3) births.

Predators of koalas

Koalas have almost half a dozen predators at the Australian continent. These predators include dingoes, wild dogs, burjills (Wedge-tailed Eagles), large owls, pythons and goannas.

Koalas and Australia's Bushfire

The Australia bushfires are one of the biggest enemies of koalas. Each year hundreds of koalas die because of bushfires, thereby bringing them on the brink of extinction.

Koalas' Social Behavior

Koalas possess a unique degree of social behavior which can be categorized on the basis of their vocalization, territorial interactions, scent marking, breeding and maternal life.

Koalas are Solitary Animals

Koalas are solitary animals and therefore, they live a solitary life. Baby koala joeys live with their mothers for 1 year, and after that their solitary life starts. They live alone on trees and eat on their own.

Sleeping Postures of koalas

Koalas sleep with various postures and these sleeping postures are usually dependent on weather, health and distress level etc. Koalas' sleeping posture also reveals about their inner-feelings.

Koalas' fur quickly gets rid of rain water

Koalas are blessed with a fur that has the natural ability to get rid of the rain water. Koalas' fur also has two layers and it is very oily, while the water quickly moves away from its fur.

Koalas Resting and Sleeping Postures and Positions during the Hot Summer Seasons

Koalas' resting and sleeping postures during the hot dry summers are different than that of the summers. During the summers koalas sleep while lying over their stomachs, sometimes in a reclining position and even lying over their back towards the tree.

Winter Season and Sleeping Postures of koalas

During the winter season, koalas sleep in the hunched sleeping posture which helps them against the severe winter of Australia. It also helps them in conserving their precious body energy.

Koalas' Urination during Summer and Winter Seasons

Koalas urinate more during the winter seasons as compared to the summer seasons. Since there is a lot of water within the Eucalyptus leaves, therefore, water is always in the diet of koalas. Koalas urinate less in hot weather.

Koalas and their Specialized Claws

Koalas possess specialized claws which primarily help them in climbing trees. Koalas have 5 claw fingers on each hand while 4 claw fingers on each foot. Their thumbs in feet do not have any claws.

Koalas have Magical Fur

Koalas possess magical fur which is thick, fluffy, woolly and also waterproof. Koalas' fur holds the key against all the extremities of the weather at the Australian continent.

How does a koala regulate its Body Temperature?

Koalas have the key ability to regulate their body temperature. Their unique fur, their specific resting and sleeping postures and their specific selection of Eucalyptus leaves help them to regulate their body temperatures.

Food Consumption and Feeding Timings of the koalas

Food consumption and feeding timings of the koalas are around 1 hour to 3 hours a day. Koalas usually feed around the dawn and dusk timings. For the rest of the time the koalas usually sleep for almost 20 hours a day.

Koalas Always Prefer Eucalyptus Leaves from the Tree top

Koalas always prefer those kinds of Eucalyptus leaves that grow at the top of the tree. These eucalyptus leaves which are at the top are fresh, have more nutrition, and offer more energetic calories for the Koalas

How does a Koala Grooms itself?

Grooming is a very essential and important part of the Koalas' life. A Koala usually uses its back claws to groom its body. Grooming help Koalas to get rid of parasites and ticks on their bodies.

Koalas are Non-Social Animals

Koalas' life specifically indicates that Koalas are non-social animals. Koalas live a solitary life. Their interaction is very much less with other koalas. They prefer to live alone. Koalas are very sluggish and sleep a lot.

Koalas' Territories and ranges within Australia's Victorian Areas

Koalas from Australia's Victorian areas have very specific and unique territorial and range behavior as compared to the other Koalas. There the Koalas ranges and territories are usually overlapped and also the Koalas' population density is very high.

Koalas' Territories and Ranges within Australia's Queensland Areas

Koalas' territories and ranges within Queensland Australia is relatively bigger than that of the Victorian areas of Australia. However, there is less food (Eucalyptus Leaves) for Koalas in Queensland, and therefore, the population is less also.

Behavior of the Alpha Dominant Male Koala

Alpha dominant male Koalas have different behavior than other male Koalas. An alpha Dominant male Koala enjoys territory control, owning the female Koalas and also having a big control over the food which includes Eucalyptus trees.

Aggressiveness of Female Koalas

Whenever, the young Koala joeys grow up, female Koalas do become aggressive towards them. Because of this aggression of the female Koalas, the joeys do not come closer after 1 year and choose a life of their own.

Scent Marking Behavior of the Male Koalas

Male Koalas have to do a scent marking to attract the female Koalas. Male Koalas spread their scent marking through trees. A koala has to rub its chest against the tree which creates a particular kind of a smelly secretion which attracts female Koala.

Mating Strategy of the Male Koalas

Male Koalas adapt a very specific kind of a mating strategy. They initiate it during the mating season through proper scent marking and urination and the approach female Koalas. They show no courtesy to the female Koalas and grab them for mating.

Fights and Territorial Encounters of Male Koalas

Territorial Encounters and fights among male koalas are very common. A dominant and larger male will always want to get rid of the weaker male within the area. While fighting male Koalas bite each other in a head on collision manner.

Sounds and Vocalizations of Male Koalas

Male Koalas possess unique sounds and vocalization. Male Koalas possess a grunting sound. Male Koalas have specific vocalization of intonation and also they have unique sounds and vocalization during fighting.

Sounds and Vocalization of the Female Koalas

Female koalas also tend to make specific sounds and vocalizations. Female koalas mostly vocalize during the mating season, protecting their young ones or during the weaning process etc.

Koalas and their Facial Expressions

Koalas possess variety of facial expressions. There facial expressions are usually governed by their nose movements, ear movements, mouth movements (lips). They show expressions whenever they are happy, scared or angry.

Breeding Ages of the Male and Female Koalas

Koalas start breeding whenever they reach their youth and maturity. Usually a male Koala start breeding around the age of 18 months. However, a female Koala starts breeding around the age of 20 months to 22 months.

Factors Influencing the Success of Koalas' Fertility Rates

Koalas' fertility rates' success depends upon variety of factors. Usually fertility is enriched within Koalas, however, because of the severe weather conditions and

diseases outbreaks, the fertility success may vary within Koalas.

Behavior of the young and adolescent Koala Joey

Adolescent and young Koala Jokeys possess a unique behavior interacting with their mothers. They are more attached with their mother and do not like loneliness. If their mother leaves, they start squeaking and triggering different behaviors.

When Does a Mother Koala Says Goodbye and Leaves the Young Koala Joey?

The mother koala says a final goodbye to its joey when a joey reaches the age of 11 to 12 months. It is the mother koala which isolates herself from the joey by showing aggressive behavior towards him.

Playful Behavior of the Young Koala Jokeys

Young Koala Jokeys are very playful in terms of their behavior. Usually marsupials are less playful but Koalas are more. They play with their mothers. They play fighting. They create peculiar and unusual movements and also nibble at their mothers.

Koalas - Mating Season and Mating Months

In Australia, the mating season of koalas begins from the month of September and it lasts till the end of April. The Koalas' mating season occurs during the spring and summer seasons of Australia.

Koala Informationen, Bilder, Neuigkeit, und Erforschung

Ein Koala ist ein Beuteltier Tier, das auf dem gesamten Kontinent von Australien lebt. KoalaInfo.com bietet alle Informationen über Koalas., Koalas News-Artikel, Koalas Habitat, Koalas Ernährung, Koala Paarungszeit Koala Joey Behavior, Mutter Koalas verlassen ihre Jokey, Jugendliche Koalas, Koalas Geburtenrate, männlich Koala Ages, weiblich Ages Koala, Koalas Gesichtsausdruck, Koalas Sounds, Koalas Stimmgebung, Koalas territoriale Begegnungen, männlich Koala Mating, Duftmarken von männlich Koalas, Grooming Aggressivität der weiblichen Koalas, Alpha dominante Männchen Koala, Koalas Territories, Queensland Koalas, viktorianischen Koalas, Koalas Sozialverhalten, Koalas, Koalas und Eukalyptus-Blätter, Koalas Nahrungsaufnahme, Körpertemperatur Koalas, Koalas Magische Fuß, Koalas Specialized Claws, Koalas Wasserlassen, Koalas während der Sommerzeit, Koalas während der Winterzeit, Koalas Schlafpositionen, Koalas Sommer Ruhen, Koalas Winter-Ruhen, Koalas als Einzelgänger, Koalas Sozialverhalten, Koalas und Bluthfresser, Koalas Predators, Koalas Geburt, Pubertät Weibliche Koalas Zeitraum, Koalas und Ernährung, Koala Jokeys Zahn, Koala Jokeys und Pap, Koala Jokeys Mutter und Milch, Koalas innerhalb ihrer Mütter Beutel, Koalas "Geruchssinn, Koala Geburt Zeit, Größe der Koala bei der Geburt, Tragzeit innerhalb Weibliche Koalas, Life of Koala Joey mit seiner Mutter, weiblich Koalas "Nahrungsaufnahme, Koalas und Eukalyptus-Blätter, Koalas und getrocknete Blätter, Koalas intellektuelle Fähigkeit, Koalas und Hitzschlag, Koalas und Dehydratation, Koalas und Hunger Koalas und Karies, Koalas Energie, Koalas 20 Stunden Schlafen, Koalas und deren Verdauung, Koalas Wasserverbrauch, Koalas und Cyanid-Verbindungen, Koalas einheimischen Namen, Koalas Ohren, Koalas "Augen, Koalas" Popularität, Koalas in Australien.

考拉 - 信息, 图片, 视频, 新闻, 文章和研究等

考拉是位于澳大利正大陆的有袋动物哺乳动物。

Коала - сумчатый млекопитающий

Коала - сумчатое животное, которое принадлежит континенту Австралия. Подобно кенгуру, животные коалы также имеют мешочки на животе.

Origin of Marsupials

The origin of the Marsupial animals goes back to almost 125 million years. The Marsupials are believed to be originated from the Eurasian region within the super continent of Laurasia.

Australia's Koala Regions

Australia's koala regions include the state of the Queensland, Victoria, New South Wales and the South Australia. The Victorian state has maximum numbers of koalas.

Types of Koalas

The Australian koalas can be categorized into three types i.e., the Brown Koalas, the Gray koalas and the Gray Brown koalas. These koalas are categorized on the basis of their fur colors, sizes and the thickness of fur.

BROWN KOALAS

Brown koalas belong to the South Australian regions of Victoria and South Australia. These koalas have chocolate-brown colored fur which is thickest amongst all koalas.

Gray Koalas

The Gray koalas natively belong to Australia's Queensland region. The Gray koalas, as the name suggest have a gray colored fur on their bodies. The Gray koalas are also called the Queensland koalas.

Discovery of Koalas

The aboriginal and native Australian people were the first ones to discover and learn about koalas. Koalas' modern-day discovery took place in the 18th century.

Koalas & Dog Attacks

Koalas are one of the major victims of the dog attacks. Koalas are no match for dogs and usually more than 80% of koalas die if they suffer from the dog attacks.

Koalas' Habitat Loss

Koalas have been the biggest victim of the habitat loss in Australia. During the last 3 decades more than 10 million hectares of koala's habitat (Eucalyptus trees) has been lost to rapid urbanization and agricultural development.

Koalas Eat 5 Time a Day

Koalas preferably eat 5 times a day. Their key schedules to eat the Eucalyptus leaves are before sunrise, afternoon, post-afternoon, before sunset and after sunset.

Liger Credits!

-  NOVOSIBIRSK ZOO
-  MYRTLE BEACH SAFARI
-  LIGERLIGER.COM
-  GW ZOO
-  TIGER WORLD
-  JUNGLE ISLAND
-  RSF - RARE SPECIES FUND
-  LIGER HERCULES WEBSITE

About Us



Welcome to koalainfo.com! The Largest Database of Koalas in the World! koalainfo.com contains Absolute Information About Koalas! We have all the latest, complete and Up-to-Date Information about Koalas.

Contact Us

Please feel free to Contact koalainfo.com Team at any Time. We will do our best to Respond you Promptly on your each and every Request, Queries and Help!

Website: www.koalainfo.com

Page | Google+

Phone: +923365398202

Email: sunnyled@gmail.com