

READY TO BEGIN YOUR ADVENTURE? PLACE A DEPOSIT



The Prophecy Gaming Table

Wyrwood Presents: The Prophecy Gaming Table



In 2012, Wyrwood was founded with a simple mission: create the finest in innovative accessories for tabletop gamers, handcrafted using natural materials and old-world craftsmanship. Since then, Wyrwood has maintained our signature high standard of quality, focus on innovation and commitment to exceptional customer service to become the industry leader in bespoke tabletop gaming.

It is with that in mind that we introduced our line of furniture with the Wyrwood Prophecy, our flagship gaming table. Designed to accommodate 6-10, packed with features and built to last a lifetime, it is the finest gaming table ever made.



Bolivian Rosewood

READY TO BEGIN YOUR ADVENTURE? PLACE A DEPOSIT



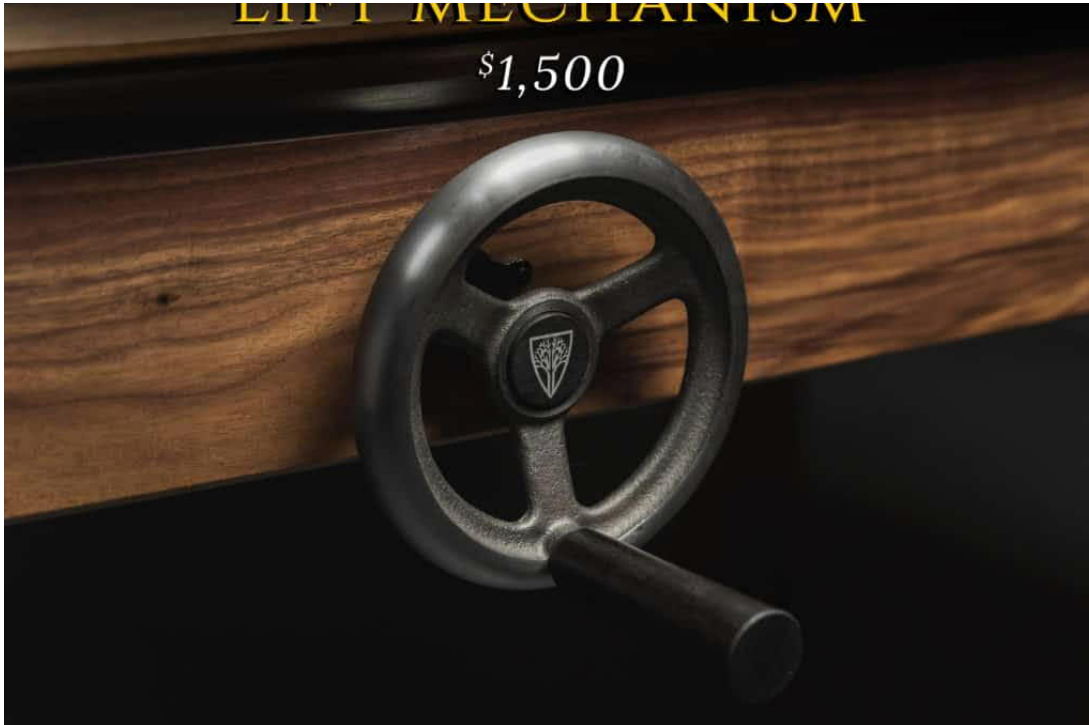
FULFILL THE PROPHECY



The Prophecy continues our tradition of innovation with two key components: our proprietary lift mechanism and our industry first spill-resistant dining topper. Each of these features are optional, so that you're free to choose the configuration that makes sense for you.



READY TO BEGIN YOUR ADVENTURE? PLACE A DEPOSIT



Gaming tables are primarily defined by their ability to store a game in progress below a dining topper. However, this often comes with severe limitations; your game is set well below the outer surface of the table. When used to playing on a standard table surface, as most of us have for all of our lives, it can be awkward to have to reach down to access your game. With the optional lift mechanism, you can raise and lower the gaming surface to whatever height you'd like – play like you would on any standard tabletop, then lower it down below the surface for dinner. After the meal, raise the surface up and get back in the game in moments.



READY TO BEGIN YOUR ADVENTURE? PLACE A DEPOSIT

overlaps the gaming surface. This two-pronged approach ensures that should a spill occur, it will harmlessly roll off to the side, or be trapped at the seam; in either case, you'll have time to manage it and get it away from your game. Whether it's role playing terrain and miniatures, or a limited edition board game, you've invested in your gaming experience. Don't let your gaming table put it at risk. Dine without fear on the Prophecy Gaming Table.



CUSTOMIZE YOUR TABLE

To further expand the functionality of the table, we've integrated a dual rail system for accessories like cup holders and card shelves. A magnetic rail runs along the entire outer perimeter of the table, with a corresponding second rail on the inner edge. Utilizing this innovative and intuitive system, you can add or remove accessories, positioning them wherever you need them at a moment's notice. Most rail accessories work on both the inner and outer edge of the table, allowing you to tailor your accessories and their positions to your unique needs, whatever they may be at that moment. See individual accessories for details.

LARGE CUP HOLDER

- *Magnetic*
- *Handcrafted*
- *Lifetime Guarantee*
- *Holds Drinks Up To 3.5" Wide*
- *Array of Wood Options*

READY TO BEGIN YOUR ADVENTURE? PLACE A DEPOSIT



Our cup holders come in two sizes to accommodate a wide variety of beverages. Both sizes include a removable metal insert for easy cleaning and versatility. The large size, 3.5" in diameter, will accommodate most glasses and containers. The small variety, 2.5" in diameter, can accept water or glass bottles, and includes a cut out to allow for use with stemware.



Meeples, dice, tokens, counters... whatever you need for your game, keep it close at hand with the component organizer.



READY TO BEGIN YOUR ADVENTURE? PLACE A DEPOSIT



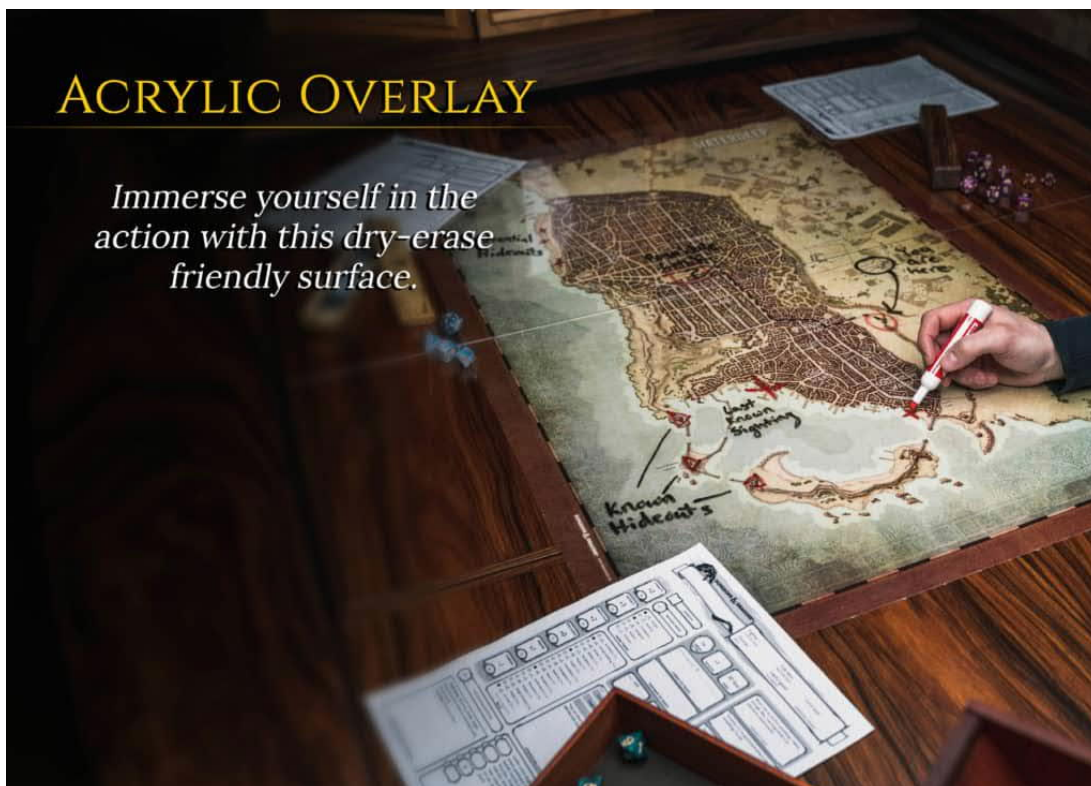
The card shelf provides a slot to hold up to 10 cards in full view. Also included are two mini-component organizers to hold tokens or other small components. The design features the ability to swivel the shelf to ensure you can keep the contents of your hand safe from prying eyes.





READY TO BEGIN YOUR ADVENTURE? PLACE A DEPOSIT

In addition, it elevates the GM and their materials above the Game Vault to properly survey their game in progress.



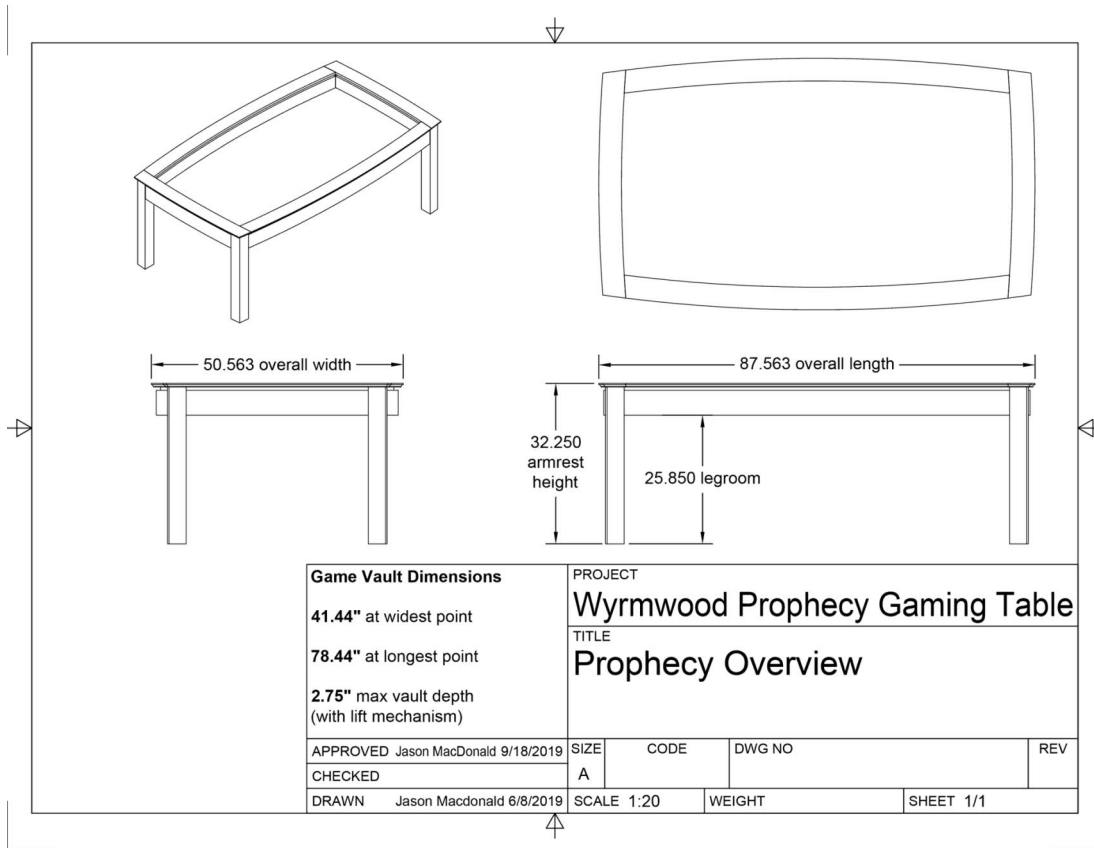


READY TO BEGIN YOUR ADVENTURE? PLACE A DEPOSIT

on which to wage your most epic battles. Transparent, dry-erase Acrylic is also available, if playing with a drawn map or other surface on which you'd like to safely make notes during gameplay.



DIMENSIONS



WOOD OPTIONS



READY TO BEGIN YOUR ADVENTURE? PLACE A DEPOSIT



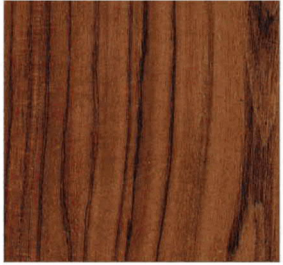
CHERRY



BLACK WALNUT



WENGE



BOLIVIAN ROSEWOOD



PURPLEHEART



MACASSAR EBONY



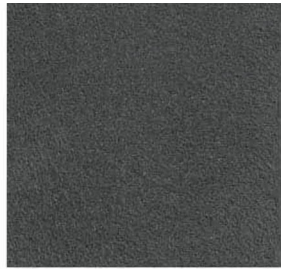
FABRIC OPTIONS



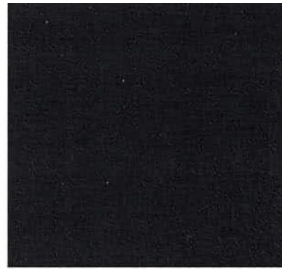
READY TO BEGIN YOUR ADVENTURE? PLACE A DEPOSIT



PLATINUM



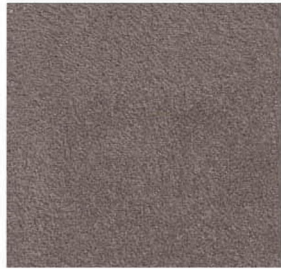
SLATE



ONYX



PARCHMENT



TAUPE



ESPRESSO



LILAC



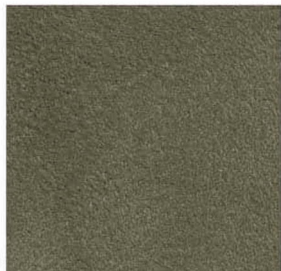
HEATHER



COBALT



WINE



SAGE



HUNTER



READY TO BEGIN YOUR ADVENTURE? PLACE A DEPOSIT



\$1,000.00

This deposit secures your place in the build queue for furniture. Full pricing for your piece(s) will be determined after you have been given an opportunity to review our samples. **This deposit is a down payment only.** Please note that delivery charges on your furniture order will be assessed at a later date based on your order and location.

Once we're ready to start crafting your furniture, we'll contact you and help finalize your order. This will occur several months prior to the estimated date of completion of your furniture, which will vary based on current demand and production capacity.

Wyrwood is committed to making sure you're satisfied with your order and your furniture. If you have an issue or concern, we encourage you to contact us. Wyrwood will strive to refund furniture deposits, until work has begun on the furniture itself. After that point, if you have any issues with your table, or something isn't right, we encourage you to reach out to us and we'll do everything we can to help, in keeping with our Craftsman's Promise.

Commissioning and receiving Wyrwood furniture is a process, and we want to ensure you are informed and confident in your commission. If you are not yet familiar with our furniture, we strongly recommend that you browse our information, and contact us prior to placing your deposit with any questions concerning the ordering process, our payment structure, your place in our build queue and estimated wait time, or any other aspect of the process. We'll be happy to walk you through the process. Thank you!

ADD TO CART

Category: Gaming Furniture

FIND OUT WHAT OUR CRAFTSMEN HAVE IN STORE NEXT - JOIN OUR EMAIL LIST!

[Sign Up Here](#)

[The Craftsman's Promise](#) [WYRM L'YFE](#) [Contact Us](#) [FAQ](#) [Wood Sourcing Ethics](#) [Our Wood Library](#) [Charitable Giving](#) [Blueprints & Plans](#)

© 2021 Wyrwood - WordPress Theme by Kadence WP