

## Features & Specifications

- Active Air Purification; Easy to Install
- Distributes Sanitization Evenly Throughout the Environment Using Ducts
- Keeps Duct Systems Free from Mold and Bacteria
- Attacks Pollutants in the Air and on Surfaces 24/7
- LED Function Lights Confirm Operation
- Safe for Humans and Animals

## Technology

- Active Radiant Catalysis (ARC®) - Our Form of Photocatalytic Oxidation Technology Using Proprietary Formula
- Germicidal UV Disinfection (Ozone or Non-Ozone Producing)

## Applications

- Homes
- Day Care Facilities
- Veterinary Clinics
- Offices
- Nursing Homes
- Distribution Centers
- Schools
- Hospitals



Molded Plastic Housing for 6", 9", 14" Models



Powder-coated Housing for Dual Probe Model

## Benefits of pureAir HVAC

- ◆ Eliminates Odors at Source
- ◆ Attacks Air & Surface Pollutants
- ◆ Distributes Oxidation Evenly
- ◆ Constantly Cleans Duct System
- ◆ Minimal Maintenance
- ◆ Ideal for Most Indoor Spaces

**pureAir HVAC Provides Continuous Air & Surface Sanitation — Improving Indoor Air Quality (IAQ) & Creating a Healthier Environment.**



Installed into your existing ductwork, pureAir HVAC features the same purification technology developed and used by NASA.



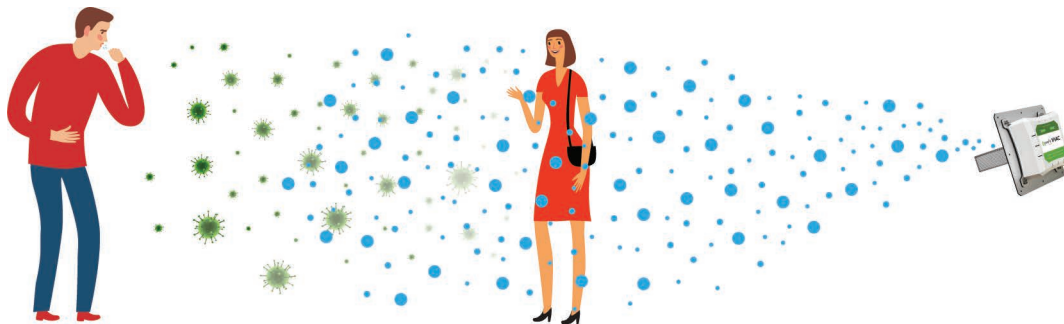
Active Radiant Catalysis, or ARC®, is a proprietary form of photocatalytic oxidation that replicates nature's purifying process by using a powerful broad-spectrum UV lamp to activate a quad-metallic catalyst, which turns moisture into a safe and effective form of powerful advanced oxidation products, or AOPs.



AOPs are propelled out into your space to hunt down contaminants, even the very small ones, and destroy them in the air and on surfaces. At the same time, negative ions go out and charge harmful particulates, causing them to drop out of your breathing space.



With a reactive surface area 16x greater than the competition - ARC® continuously sanitizing your space, destroying microbes, and rendering contaminants harmless. The result is the significant reduction of odors, allergens, mold, bacteria, viruses, volatile organic compounds, and more.



Model	5" Cell	9" Cell	14" Cell	Dual 14"
<b>Coverage</b> (Square Footage)	Less than 1,000 ft <sup>2</sup>	750 - 2,500 ft <sup>2</sup>	2,250 - 5,000 ft <sup>2</sup>	4,500 - 10,000 ft <sup>2</sup>
<b>Coverage</b> (Cubic Footage)	6,000 ft <sup>3</sup>	16,000 ft <sup>3</sup>	40,000 ft <sup>3</sup>	80,000 ft <sup>3</sup>
<b>HVAC System</b>	2 - 2.5 Tons	3 - 3.5 Tons	5+ Tons	10+ Tons
<b>Electrical</b>	13 W	17 W	27 W	38 W
<b>Dimensions</b> (HxWxD)	9.75" x 9.75" x 8.75"	9.75" x 9.75" x 12.0"	9.75" x 9.75" x 17.75"	9.8" x 11.3" x 17"
<b>Weight</b>	2.3 lb	2.5 lb	2.7 lb	4.5 lb