



THE

*Heritage*

COLLECTION

2017





# Standard Features

## INTERIOR

- Full Panel Drapes with Decorative Rod  
– Living Areas only
- 2" Mini-Blinds T/O
- Shaw 13 oz Carpet with 5#  
Rebond Pad & Tack Strip
- 8' Flat Ceilings Throughout
- Stipple Ceiling Finish
- Taped Ceiling Joints
- 1/2" Drywall Throughout
- Glidden Builder Grade Primer T/O
- "Closet Maid" Ventilated Wire  
Shelving in Closets
- 2-Bulb Ceiling Lights All Living Areas
- 2" Flat Base Trim & Door  
Casing Throughout
- 5-panel White Interior Doors
- 32" Interior Doors where Applicable

## KITCHEN

- Platinum Kitchen Cabinets
- LC Wrapped Cabinet Stiles
- Hardwood Cabinet Doors
- Concealed European Style  
Counter-sunk Hinges
- 3/4" Adjustable Shelves in  
Overhead Cabinets
- Fixed Center Shelf in Base
- GFCI Receptacles
- Metal Drawer Guides
- Brushed Nickel Cabinet Door Knobs
- Stainless Steel Double Bowl Kitchen Sink
- Frigidaire Appliances
  - 30" Free-standing Electric Range
  - 18" CF Frost Free Refrigerator
- (4) Recessed Can Lights in Kitchen
- Bank of Drawers
- Recessed Can Light over Kitchen Sink
- 4" Ceramic Backsplash in Kitchen

## BATHS

- 60" Fiberglass Garden Tub/  
Shower in Master Bath
- 60" Fiberglass Tub/Shower - Bath #2
- High Pressure Laminated  
Countertops & 4" Backsplash
- Porcelain Commodes
- Porcelain Lavs
- Lighted Power Exhaust Fans in all Baths
- GFCI Receptacles
- Strip Light Above Vanities
- Large Vanity Mirror - Bath #1
- 36" Tall Furniture Style  
Vanity in Master Bath
- Metal Faucets with Anti-Scald

## INSULATION

- Zone III Insulation Package
  - R-28 Blown Ceiling Insulation  
with Vapor Barrier
  - R-19 Fiberglass Insulation in Walls
  - R-11 Fiberglass Insulation in Floors
  - Metal Heat Ducts

## EXTERIOR

- Nominal 3/12 Roof Pitch
- 25 Year Certaineed XT  
Fiberglass Shingle
- Metal Facia
- Vinyl Vented Soffit
- 36" Steel JELD-WEN Front Door  
w/ Deadbolt
- 32" Steel JELD-WEN Rear Door  
w/ Deadbolt
- Exterior Light at Front and Rear Doors
- 4 1/2" .40 Mil Dutch Lap Vinyl Siding
- Exterior GFI Recept
- Low E Vinyl Windows  
w/6 Over Clear Grids
- 15" Shutters (FDS)

## UTILITIES

- 200 AMP Service Panel 20/40 Box
- Electric Furnace
- 30 Gallon Electric Water Heater
- Water Heater Pan with Exterior Drain
- PEX Plumbing
- Wire & Plumb for Washer
- Wire & Vent for Dryer
- Recessed Whole House Shut Off
- Water Shut-Off Valves Throughout
- GFI Protected Receptacles  
in Kitchen and Baths

## CONSTRUCTION

- Steel I-Beam Frame with Detachable Hitch
- 2"x6" Floor Joists - 16" O.C. on 28 Wides
- 2"x8" Floor Joists - 16" O.C. on 30 Wides
- 23/32 T&G OSB Floor  
Decking Glued & Fastened
- 2" x 6" Exterior Walls - 16" O.C.
- 30 lb. Roof Load
- 7/16" OSB Roof Sheathing
- Ridge Vent Roof Venting
- Linked Smoke Detectors with Battery  
Back-up in Main Living & All Bedrooms
- 7/16" OSB Exterior Sheathing  
with Windwrap

## MODULAR SPECIFICATIONS ADDITIONS

- Nominal 3/12 Roof Truss
- 2" x 10" Floor Joists 16" O.C.
- R-40 Insulation in Ceiling
- Additional Exterior Recept (2 Total)
- 30# Ground Snow Load
- Fiberglass Heat Ducts
- 2" x 4" Interior Walls
- 2" x 4" Mate Line Wall
- 40/40 200 amp Panel Box
- Argon Gas Windows



# Table of Contents

<b>Model Name</b>	<b>★</b>	<b>Model No.</b>	<b>★</b>	<b>Sq. Footage</b>	<b>★</b>	<b>Bedrooms</b>	<b>★</b>	<b>Baths</b>	<b>★</b>	<b>Page</b>
Washington	★	4428-9003	★	1,188	★	3	★	2	★	6
Reagan	★	4428-9008	★	1,188	★	3	★	2	★	7
Kennedy	★	4828-9000	★	1,296	★	3	★	2	★	8
Van Buren	★	4828-9030	★	1,224	★	3	★	2	★	9
Eisenhower	★	5228-9001	★	1,404	★	3	★	2	★	10
Jefferson	★	5228-9007	★	1,404	★	3	★	2	★	11
Garfield	★	5228-9016	★	1,404	★	3	★	2	★	12
Wyatt	★	5628-8045	★	1,512	★	3	★	2	★	13
Truman	★	5628-9009	★	1,512	★	3	★	2	★	14
Coolidge	★	5628-9033	★	1,422	★	3	★	2	★	15
Jackson	★	5628-9034	★	1,512	★	3	★	2	★	16
Buchanan	★	5628-9037	★	1,512	★	3	★	2	★	17
Roosevelt	★	6028-9002	★	1,620	★	3	★	2	★	18
Arlington	★	6428-12-1	★	1,728	★	3	★	2	★	19
Lincoln	★	6428-9006	★	1,728	★	3	★	2	★	20
Adams	★	6428-9049	★	1,728	★	3	★	2	★	21
Monroe	★	6428-9050	★	1,728	★	3	★	2	★	22
Ward	★	6828-9006-1	★	1,836	★	4	★	2	★	23
Cleveland	★	6030-9024	★	1,800	★	3	★	2	★	24
Grant	★	6030-9025	★	1,800	★	3	★	2	★	25
Harrison	★	6430-9046	★	1,920	★	3	★	2	★	26
Laramie	★	6830-8052	★	2,040	★	3	★	2	★	27
Chadwick	★	7630-8028	★	2,280	★	4	★	3	★	28
Franklin	★	7630-9051	★	2,280	★	3	★	3	★	29



# Exterior Packages



## Keystone PACKAGE

- ~ 3/12 Roof Pitch - shown  
available on 5/12 Roof Pitch
- ~ 3 Color Packages Available



## Prairie PACKAGE

- ~ 5/12 Roof Pitch - shown  
available on 3/12 Roof Pitch
- ~ 2 Color Packages Available



## Craftsman PACKAGE

- ~ 5/12 Roof Pitch - shown  
available on 3/12 Roof Pitch



The Heritage Collection offers three distinctive color packages that fit your unique style.

# Color Packages

## Heritage Exterior Package

### TUNDRA MOSS

- ~ Dutch lap siding – tundra moss
- ~ Board & batten on faux bump – irish linen
- ~ Trim color – white
- ~ Shake siding in gable – forrest
- ~ Vinyl window surrounds – FDS
- ~ White outside corner posts – FDS



## Heritage Exterior Package

### CASTLESTONE

- ~ Dutch lap siding – castlestone
- ~ Board & batten on faux bump – clipper gray
- ~ Trim color – white
- ~ Shake siding in gable – smokestone
- ~ Vinyl window surrounds – FDS
- ~ White outside corner posts – FDS



## Heritage Exterior Package

### RUSTIC CLAY

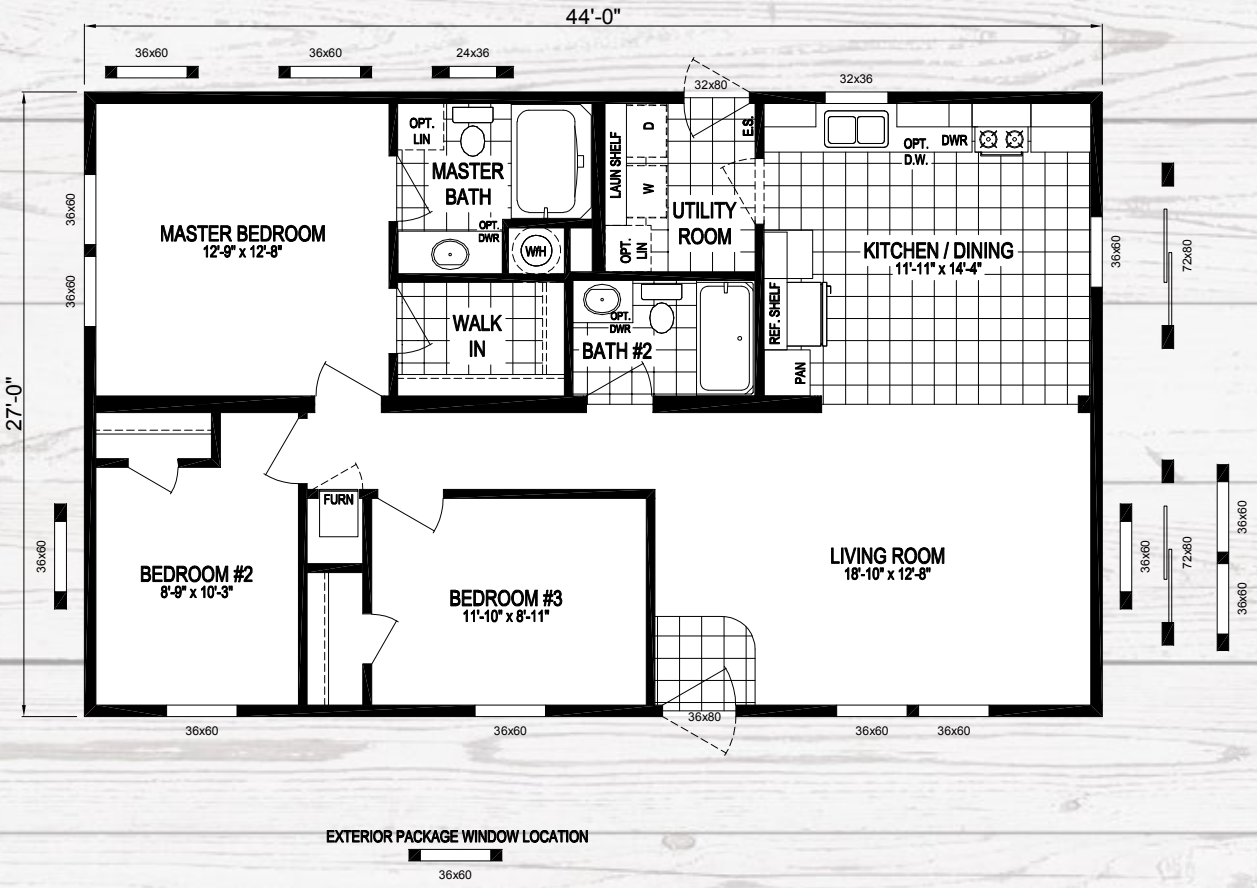
- ~ Dutch lap siding – Rustic Clay
- ~ Board & batten on faux bump – irish linen
- ~ Trim color – white
- ~ Shake siding in gable – shoreline
- ~ Vinyl window surrounds – FDS
- ~ White outside corner posts – FDS



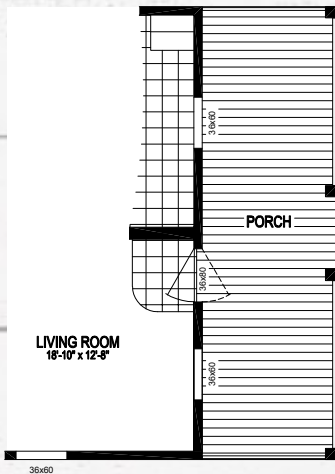


# The Washington

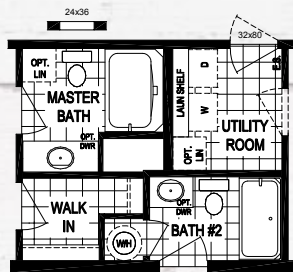
MODEL NUMBER **4428-9003** ★ 1,188 sq. ft. 3 Bedroom / 2 Bath



**NOTE:**  
HUD HOMES THAT HAVE A GAS WATER HEATER AND A 5/12 ROOF PITCH WILL REQUIRE AN "SC" ON SITE INSPECTION

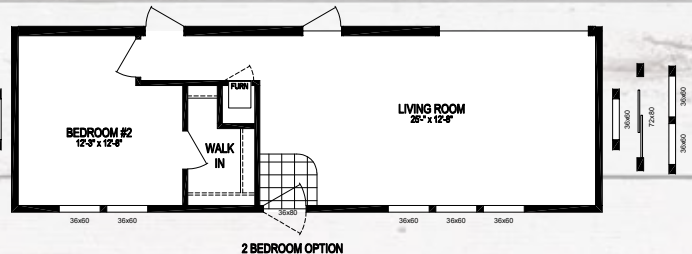


8' PORCH OPTION W/ END ENTRY

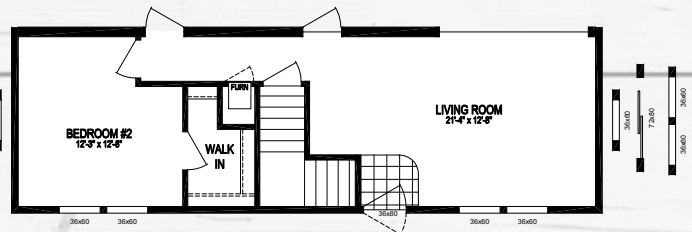


OPTIONAL WATER HEATER DOOR

**NOTE:**  
HUD HOMES THAT HAVE A GAS WATER HEATER AND A 5/12 ROOF PITCH WILL REQUIRE AN "SC" ON SITE INSPECTION



2 BEDROOM OPTION

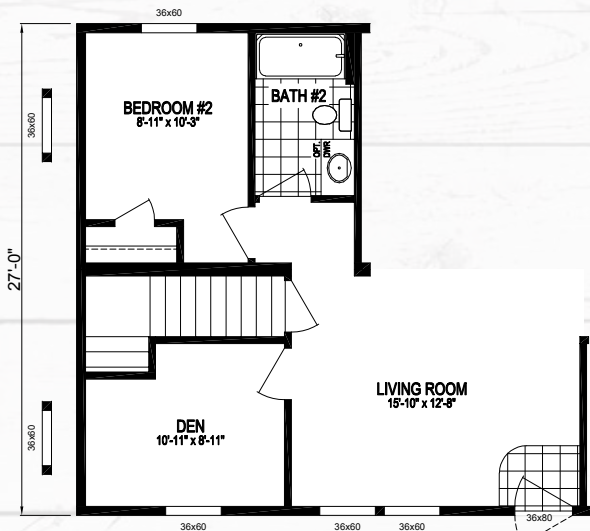
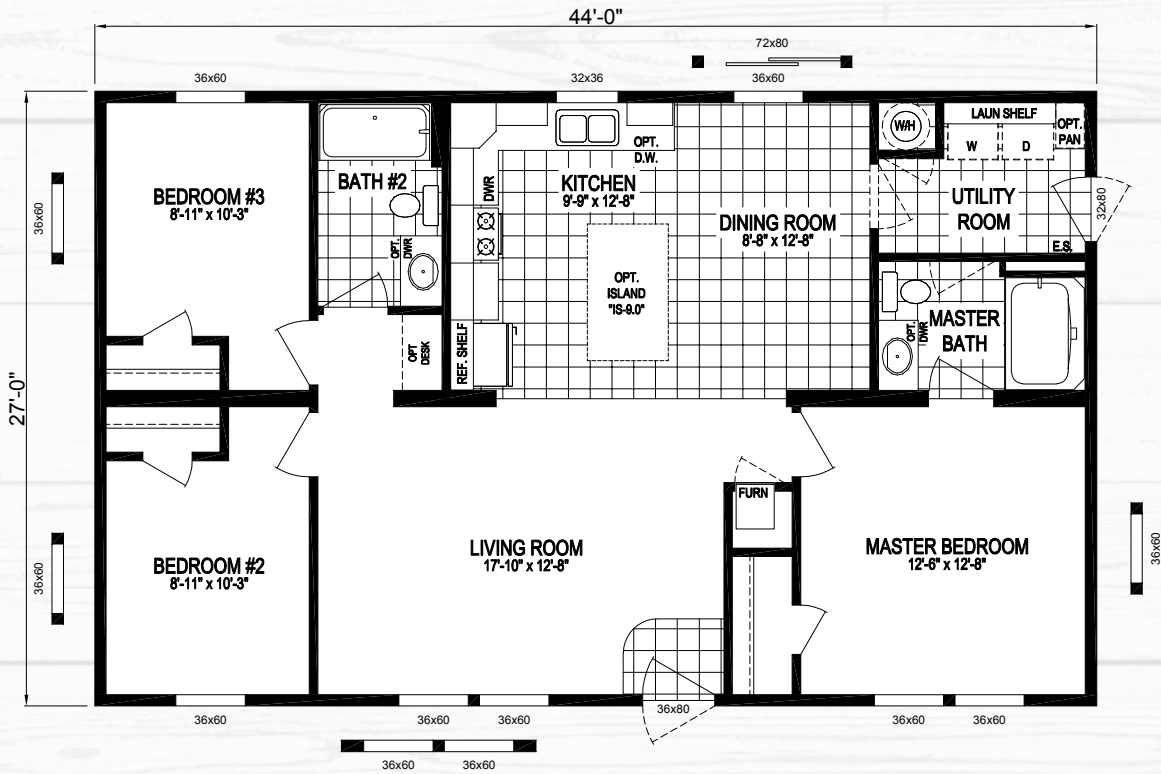


2 BEDROOM OPTION

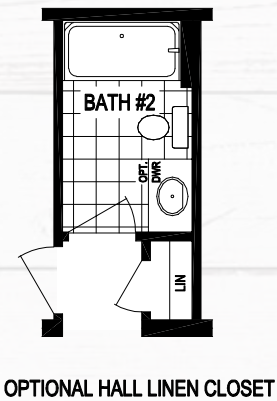
# The Reagan

1,188 sq. ft. 3 Bedroom / 2 Bath ★ 4428-9008

MODEL NUMBER



OPTIONAL BASEMENT STAIRWELL  
(NOT AVAILABLE WITH EXT. PACKAGE)



OPTIONAL HALL LINEN CLOSET

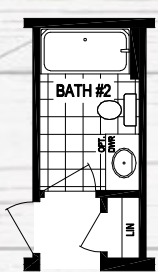
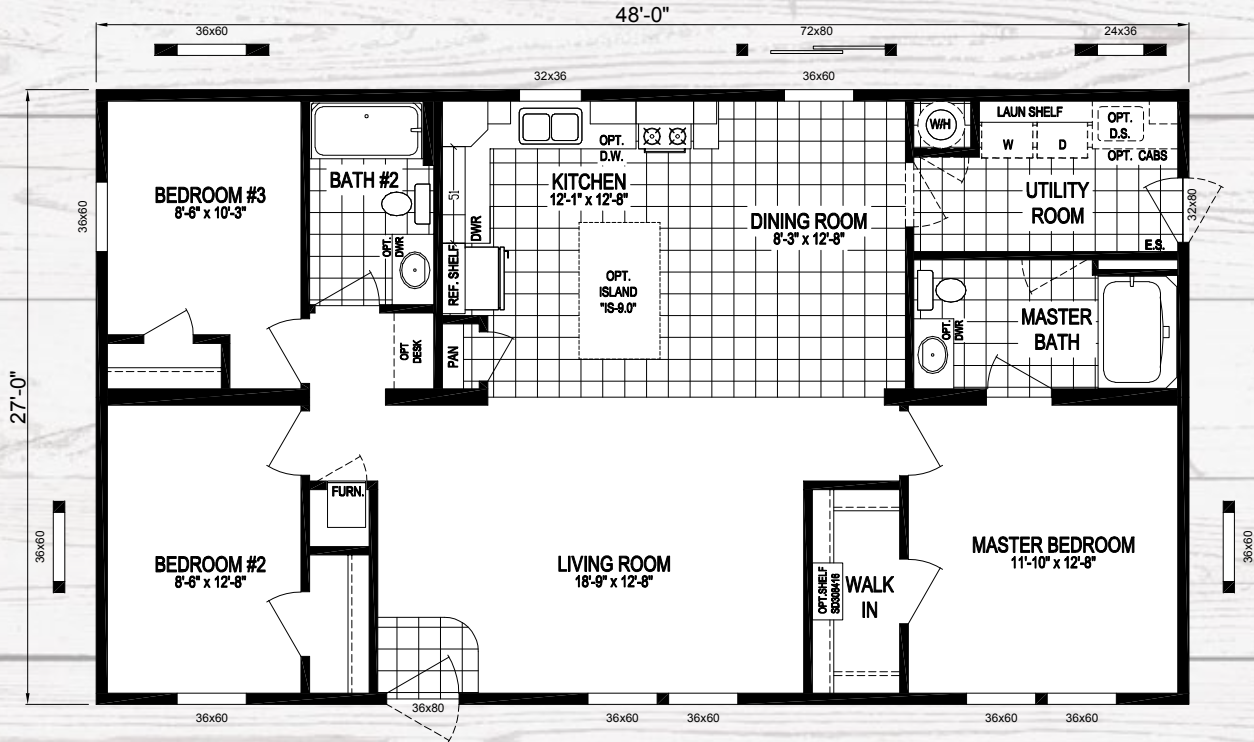


# The Kennedy

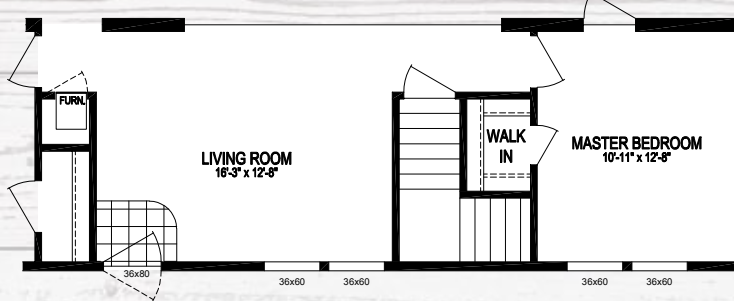
MODEL NUMBER

**4828-9000**

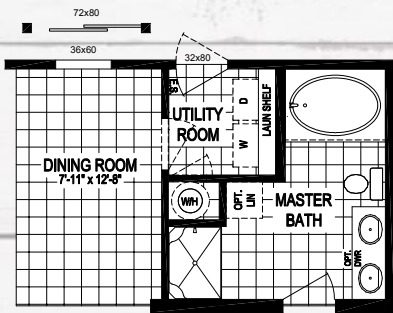
★ 1,296 sq. ft. 3 Bedroom / 2 Bath



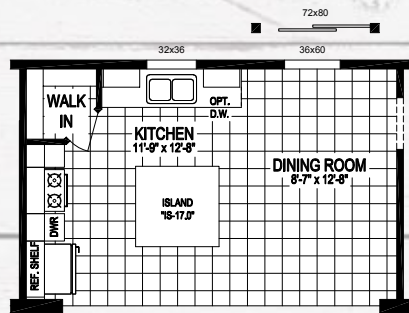
OPTIONAL HALL LINEN CLOSET



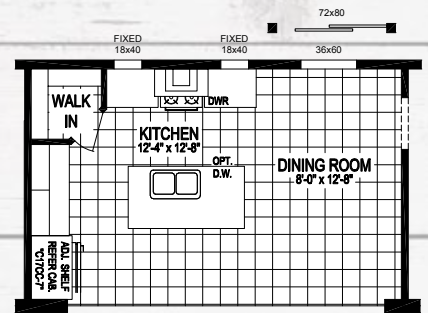
OPTIONAL BASEMENT STAIRWELL



OPTIONAL DELUXE BATH



GRANITE COUNTERTOP KITCHEN #1



GRANITE COUNTERTOP KITCHEN #2

NOTE:  
HUD HOMES THAT HAVE A GAS WATER HEATER AND A 5/12 ROOF PITCH WILL REQUIRE AN "SC" ON SITE INSPECTION

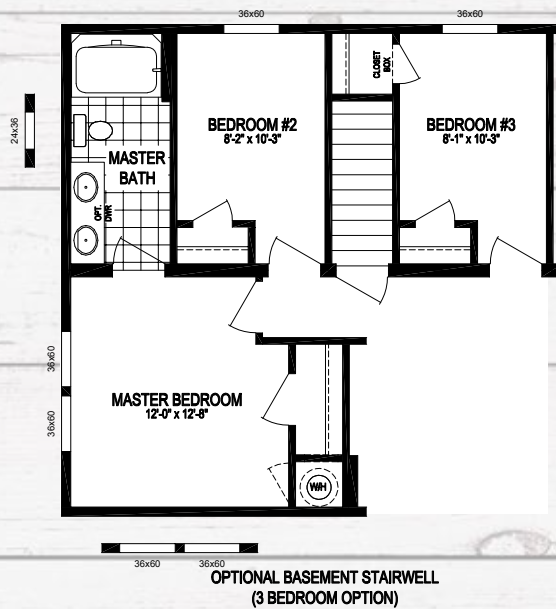
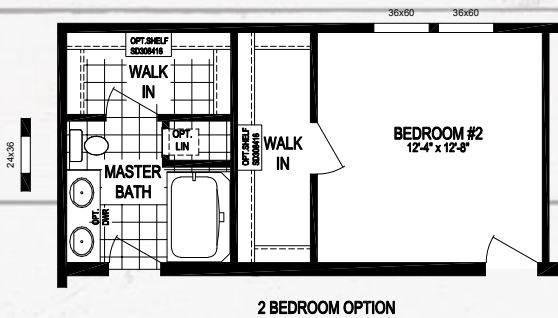
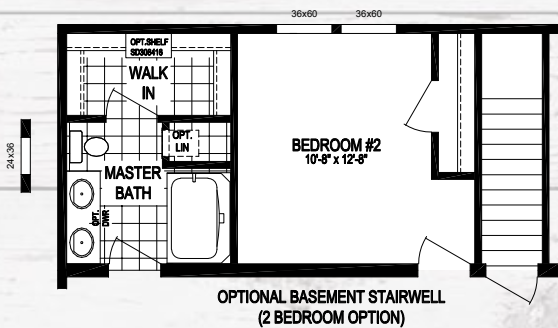
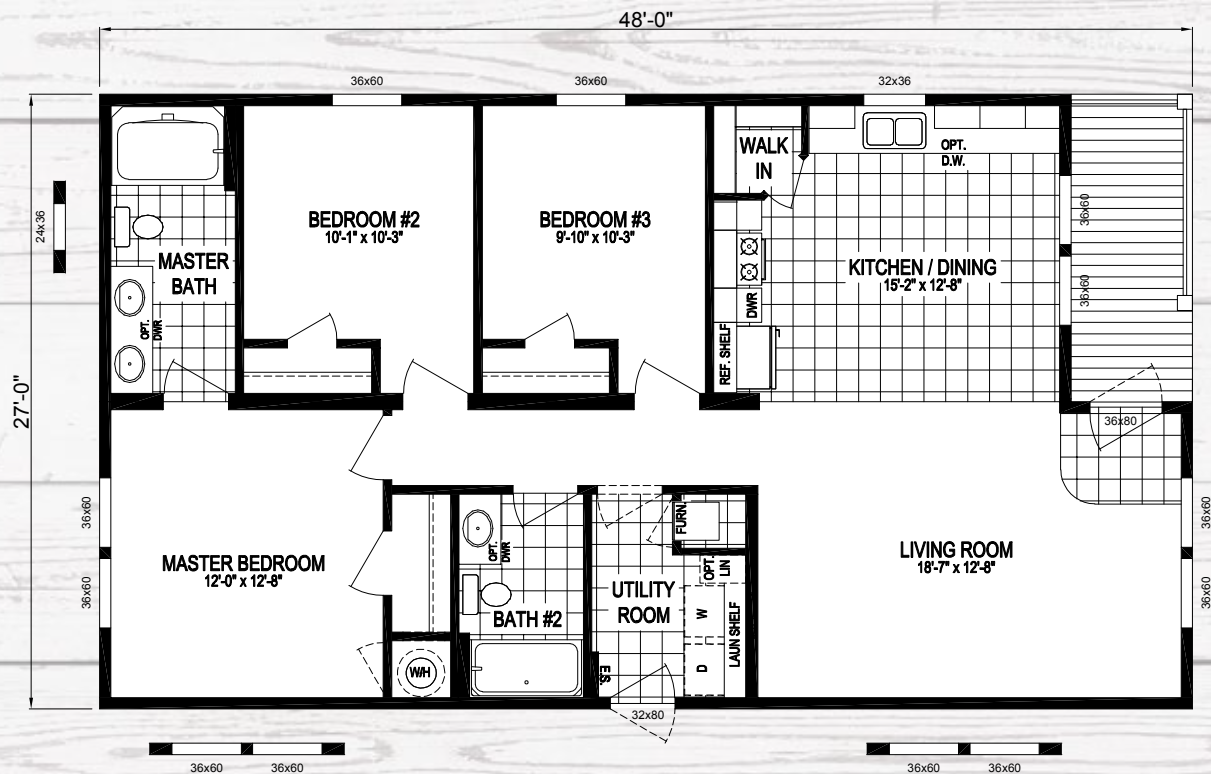




# The Van Buren

1,224 sq. ft. 3 Bedroom / 2 Bath ★ 4828-9030

MODEL NUMBER



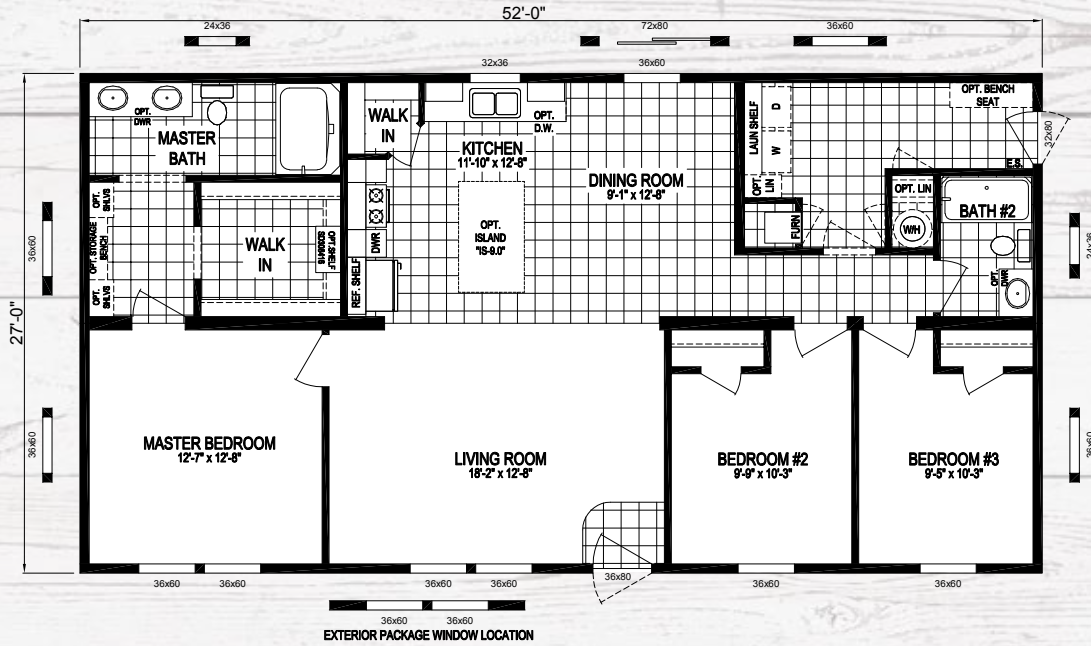


# The Eisenhower

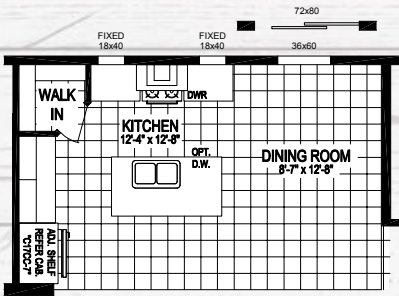
MODEL NUMBER

**5228-9001**

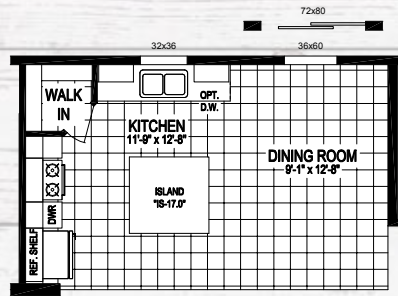
★ 1,404 sq. ft. 3 Bedroom / 2 Bath



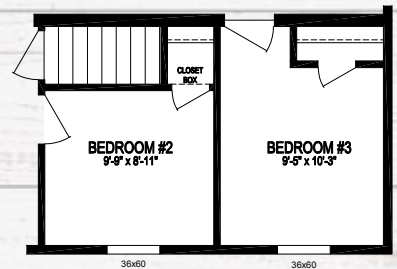
NOTE:  
HUD HOMES THAT HAVE A GAS WATER HEATER AND A 5/12 ROOF PITCH WILL REQUIRE AN "SC" ON SITE INSPECTION



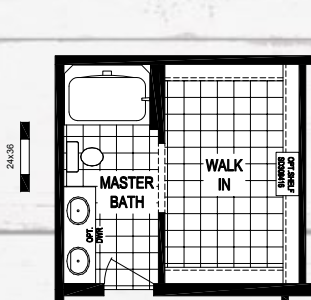
GRANITE COUNTERTOP KITCHEN #2



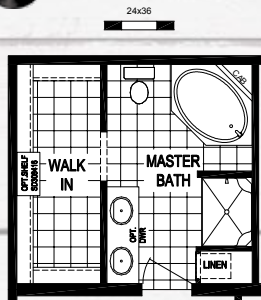
GRANITE COUNTERTOP KITCHEN #1



OPTIONAL BASEMENT STAIRWELL



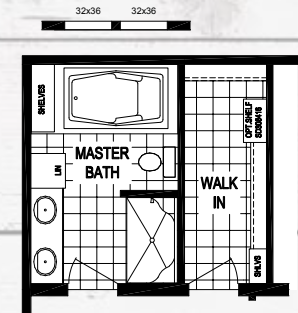
TRADITIONAL BATH OPTION



DELUXE BATH OPTION "A"



OPTIONAL MASTER BATH w/ 72" CERAMIC SHOWER



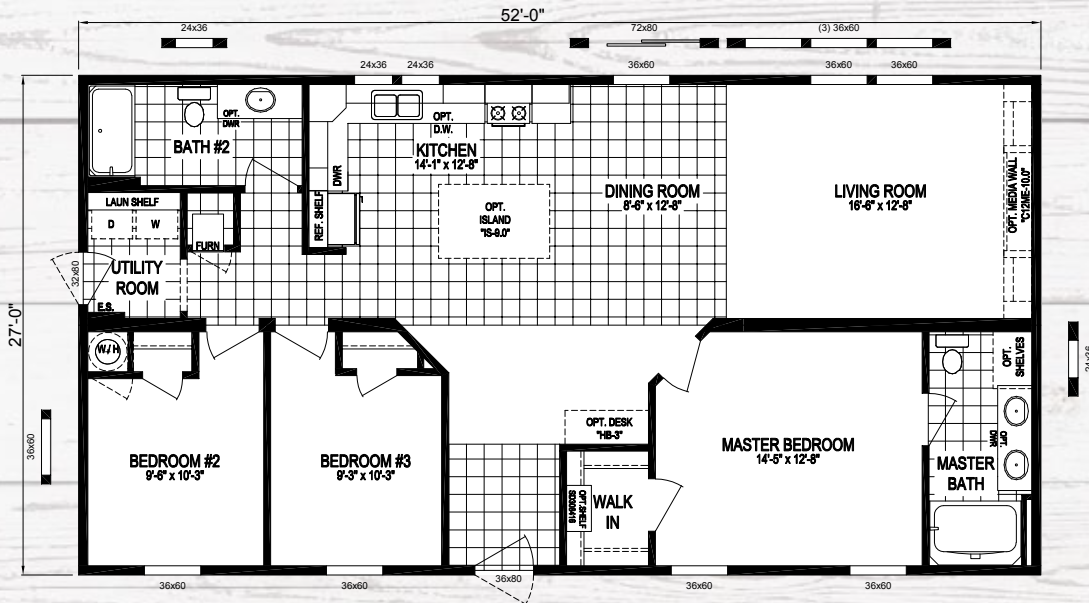
OPTIONAL DELUXE BATH w/ 72" SOAKER TUB



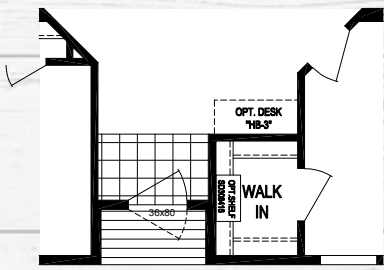
# The Jefferson

1,404 sq. ft. 3 Bedroom / 2 Bath ★ 5228-9007

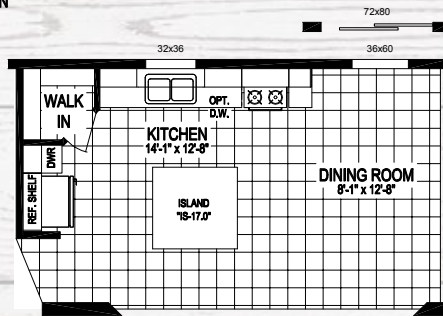
MODEL NUMBER



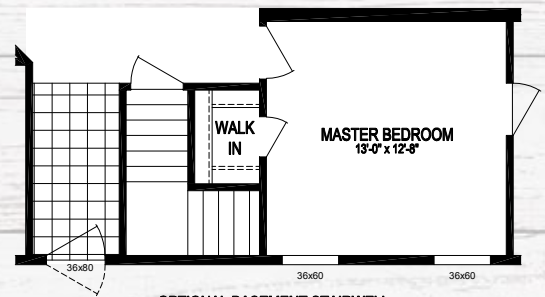
NOTE:  
HUD HOMES THAT HAVE A GAS WATER HEATER WILL REQUIRE  
AN "SC" ON SITE INSPECTION



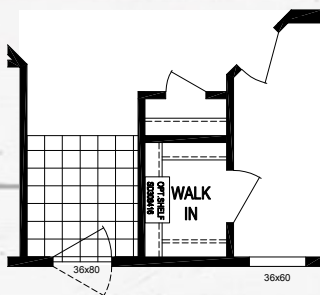
OPTIONAL RECESSED ENTRY  
(NOT AVAILABLE WITH BASEMENT STAIRWELL)



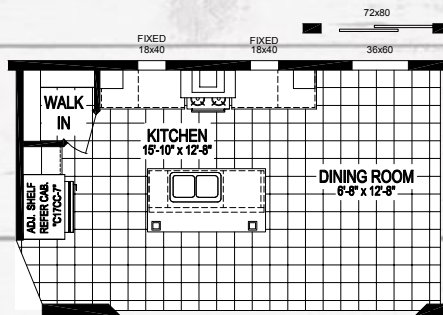
GRANITE COUNTERTOP KITCHEN #1



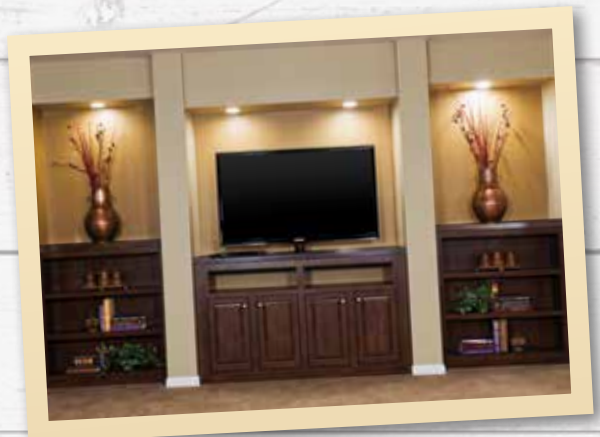
OPTIONAL BASEMENT STAIRWELL  
(NOT AVAILABLE WITH EXTERIOR PACKAGE)



OPTIONAL ENTRY CLOSET



GRANITE COUNTERTOP KITCHEN #3



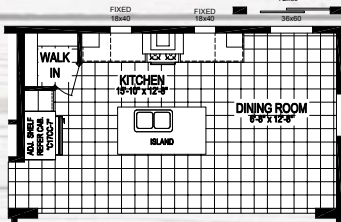
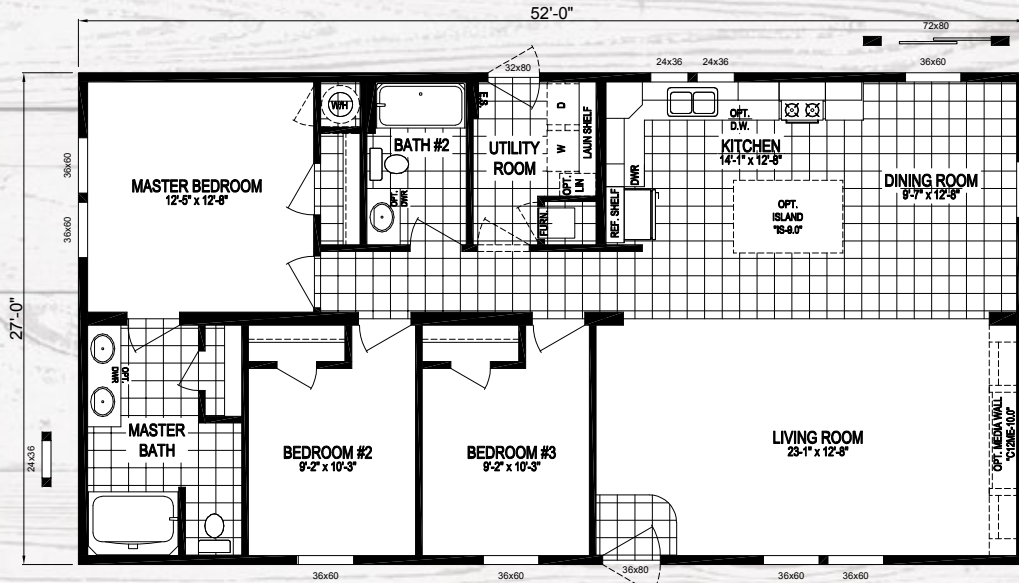


# The Garfield

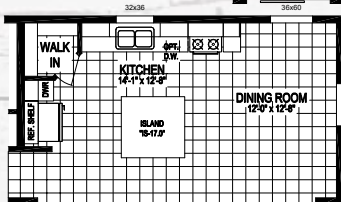
MODEL NUMBER

**5228-9016**

★ 1,404 sq. ft. 3 Bedroom / 2 Bath



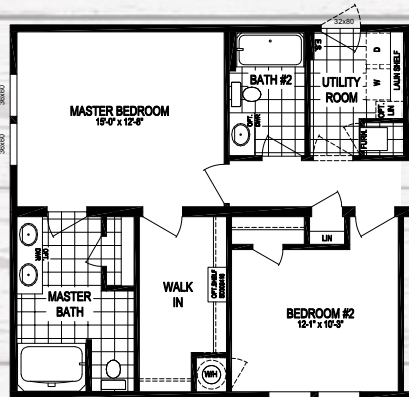
GRANITE COUNTERTOP KITCHEN #3



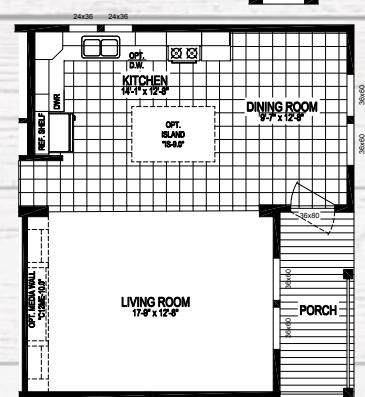
GRANITE COUNTERTOP KITCHEN #1



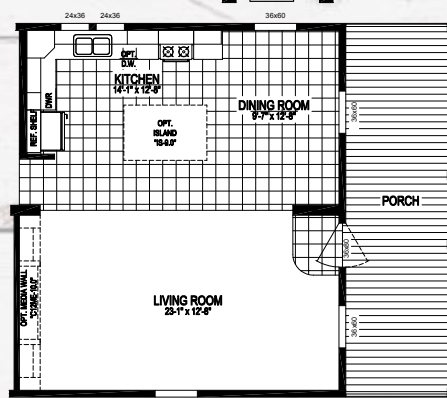
OPTIONAL BASEMENT STAIRWELL



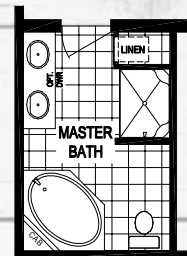
2 BEDROOM LAYOUT



OPTIONAL END ENTRY w/ FRONT PORCH



8' PORCH OPTION w/ END ENTRY



OPTIONAL DELUXE BATH "A"

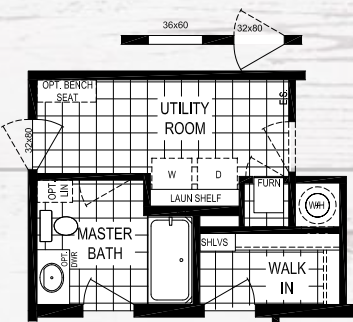
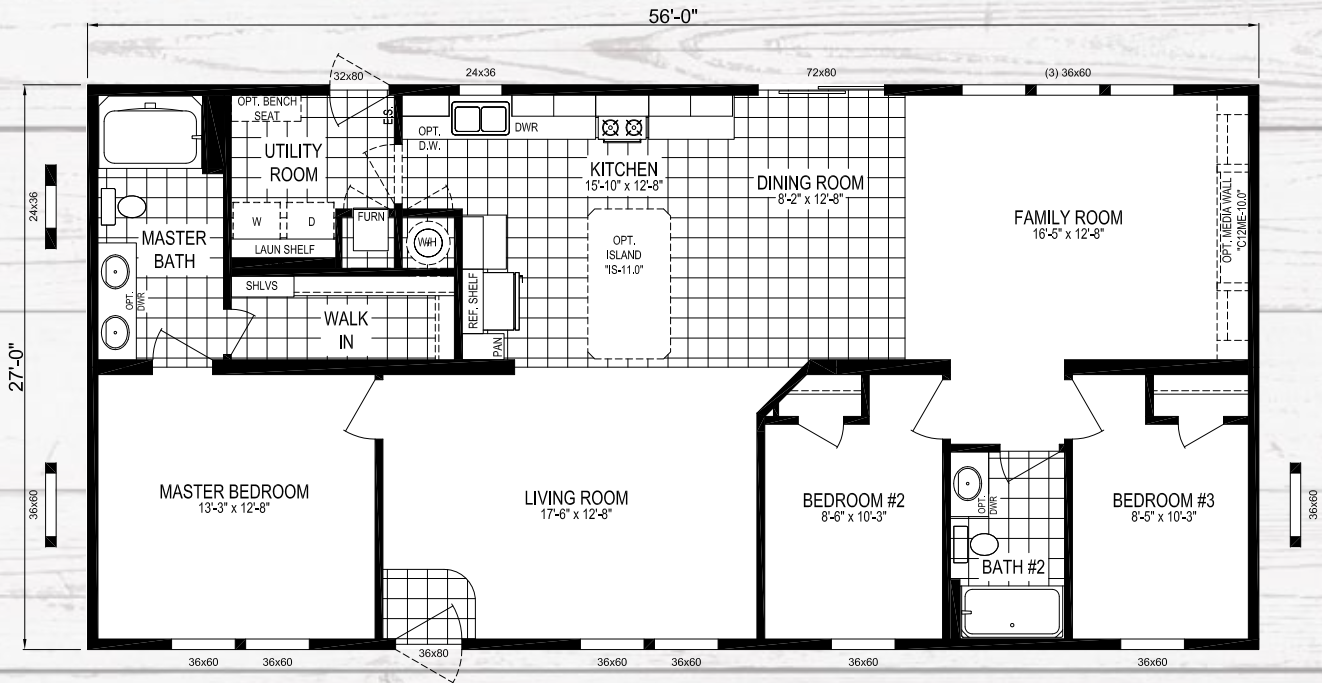




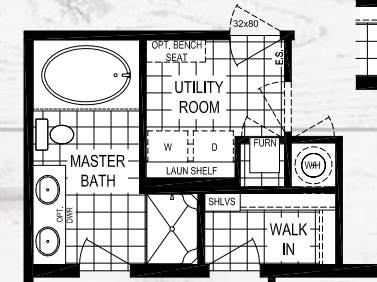
# The Wyatt

1,512 sq. ft. 3 Bedroom / 2 Bath ★ 5628-8045

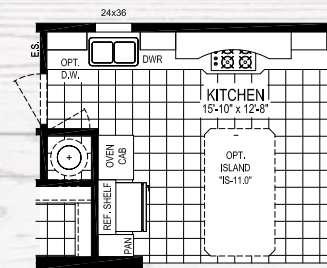
MODEL NUMBER



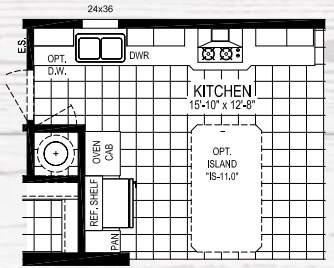
OPTIONAL END ENTRY



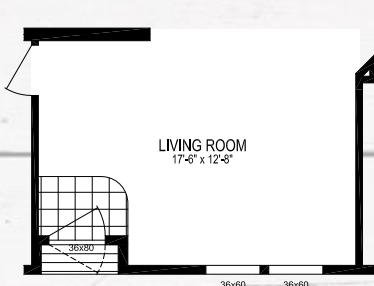
OPTIONAL DELUXE BATH



DISTINCTIVE KITCHEN WITH SURFACE COOKTOP, BUILT-IN OVEN & MICROWAVE



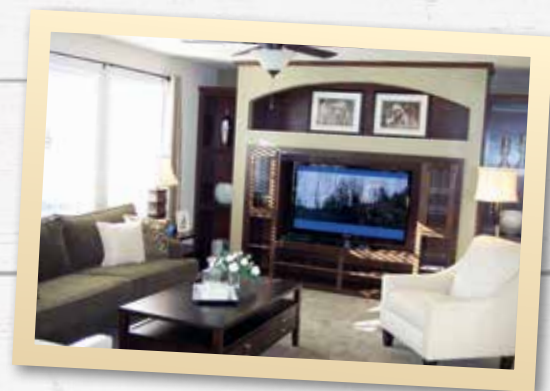
GOURMET KITCHEN WITH SURFACE COOKTOP, BUILT-IN OVEN & MICROWAVE



OPTIONAL RECESSED ENTRY



OPTIONAL BASEMENT STAIRWELL



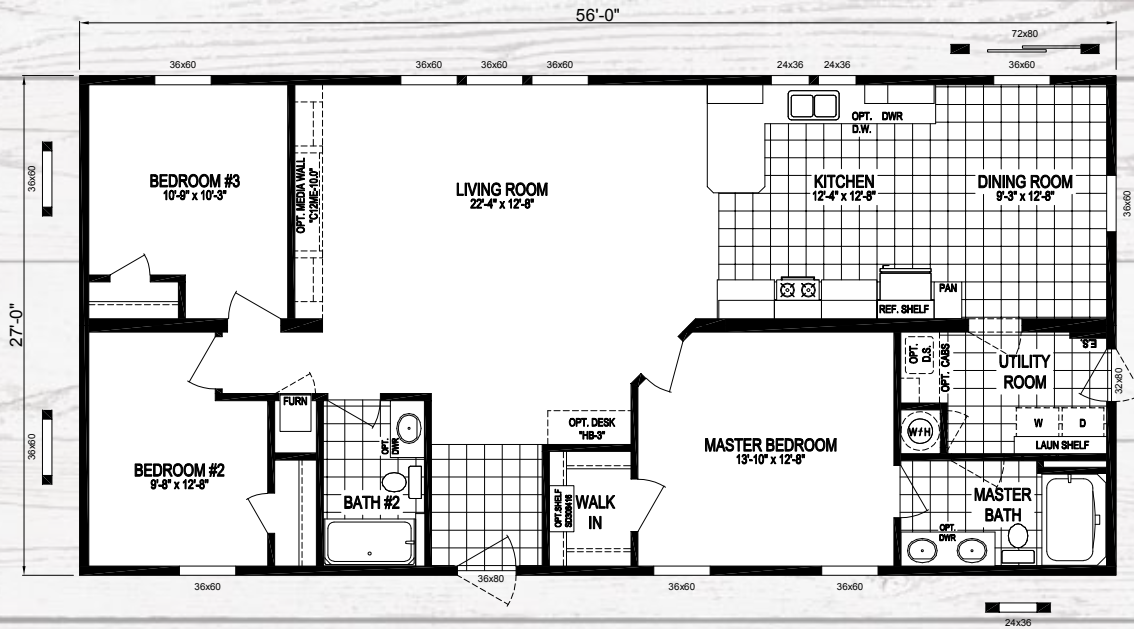


# The Truman

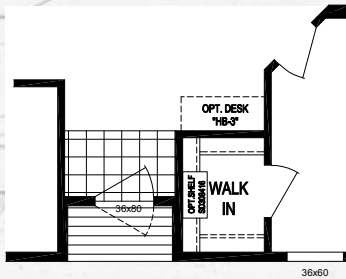
MODEL NUMBER

**5628-9009**

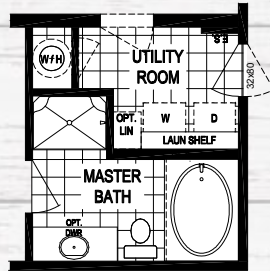
★ 1,512 sq. ft. 3 Bedroom / 2 Bath



NOTE:  
HUD HOMES THAT HAVE A GAS WATER HEATER AND A 5/12  
ROOF PITCH WILL REQUIRE AN "SC" ON SITE INSPECTION



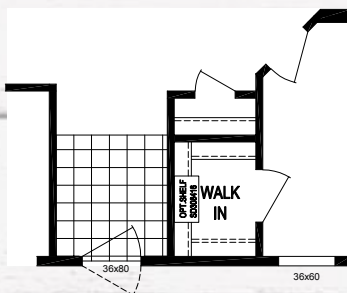
OPTIONAL RECESSED ENTRY  
(NOT AVAILABLE WITH BASEMENT STAIRWELL)



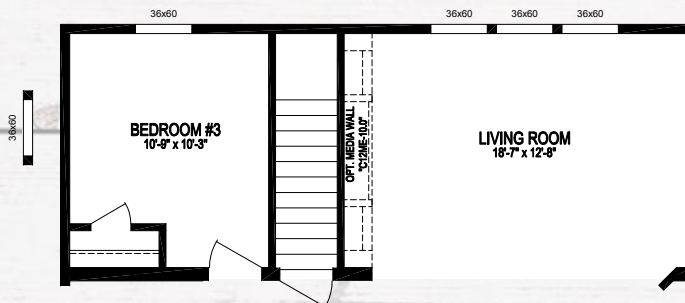
OPTIONAL DELUXE BATH  
NOTE:  
A GAS WATER HEATER WILL REQUIRE  
AN AC ON A HUD HOME



NOTE:  
HUD HOMES THAT HAVE A GAS WATER HEATER AND A 3/12  
ROOF PITCH WILL REQUIRE AN "SC" ON SITE INSPECTION



OPTIONAL ENTRY CLOSET



OPTIONAL BASEMENT STAIRWELL





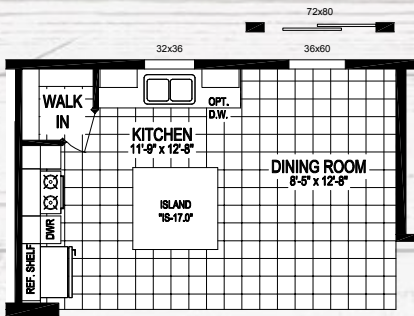
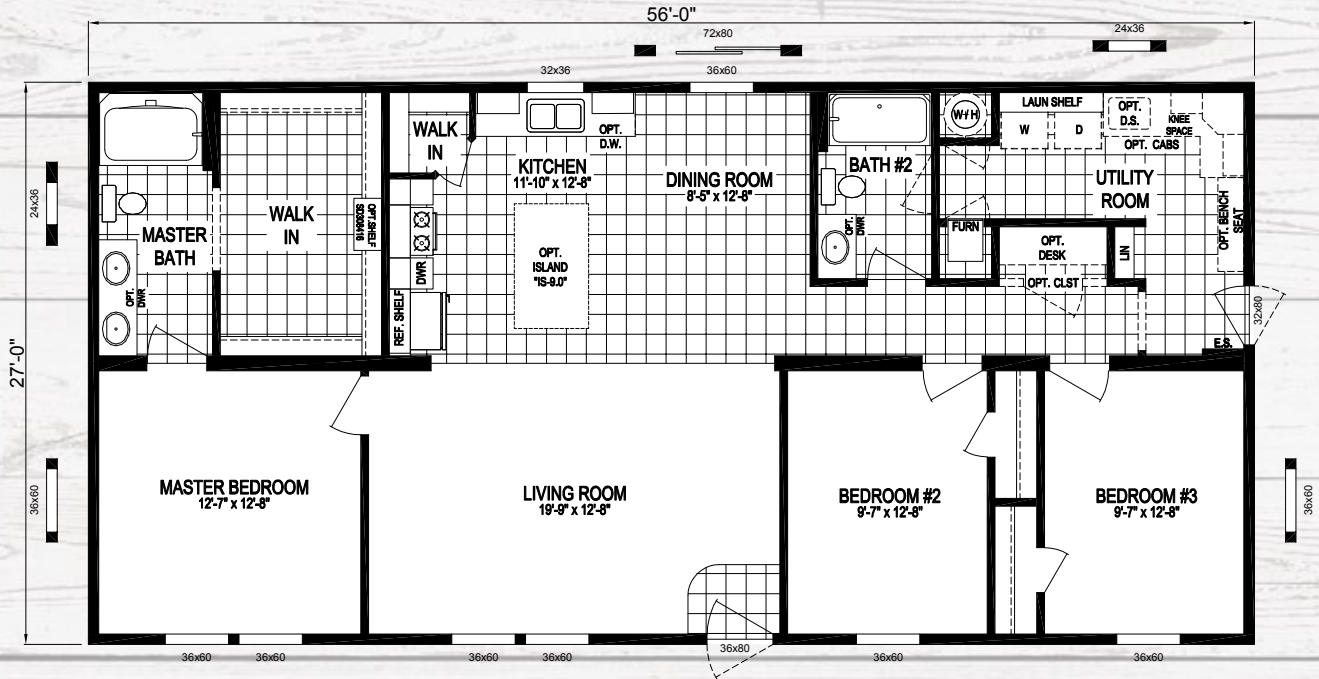


# The Jackson

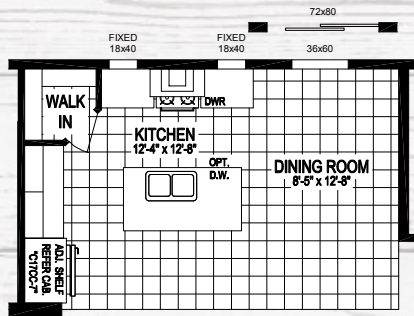
MODEL NUMBER

**5628-9034**

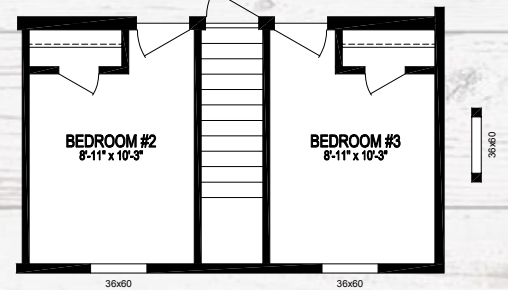
★ 1,512 sq. ft. 3 Bedroom / 2 Bath



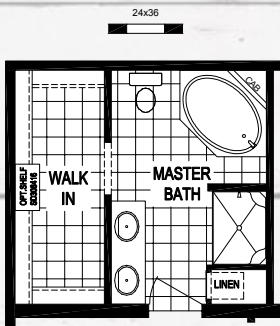
GRANITE COUNTERTOP KITCHEN #1



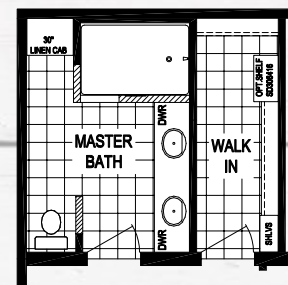
GRANITE COUNTERTOP KITCHEN #2



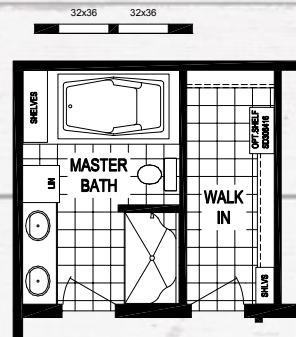
OPTIONAL BASEMENT STAIRWELL



DELUXE BATH OPTION "A"



OPTIONAL MASTER BATH w/ 72" CERAMIC SHOWER



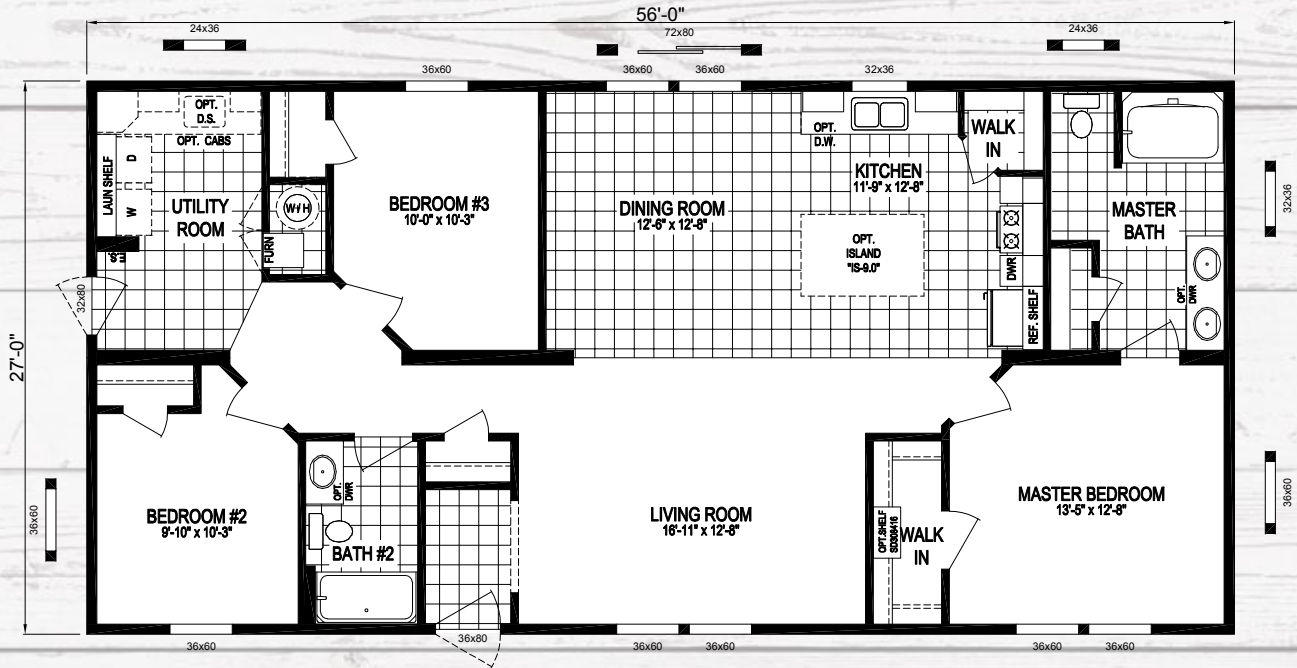
OPTIONAL DELUXE BATH w/ 72" SOAKER TUB



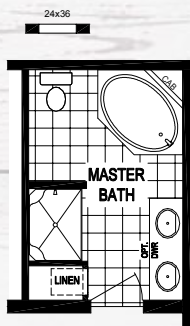
# The Buchanan

1,512 sq. ft. 3 Bedroom / 2 Bath ★ 5628-9037

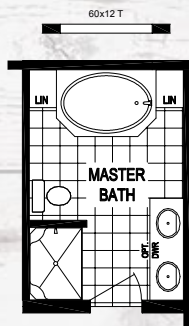
MODEL NUMBER



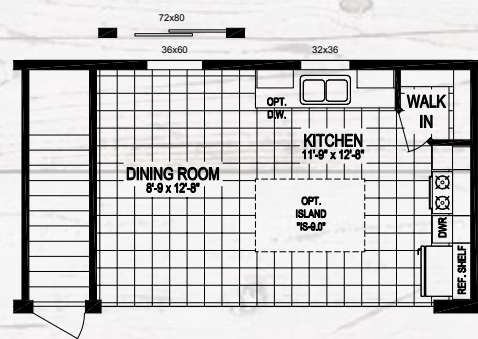
**NOTE:**  
HUD HOMES THAT HAVE A GAS WATER HEATER AND A 5/12 ROOF PITCH WILL REQUIRE AN "SC" ON SITE INSPECTION



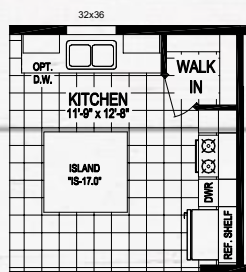
OPTIONAL DELUXE BATH (OPTION A)



OPTIONAL DELUXE BATH (OPTION B)



OPTIONAL BASEMENT STAIRWELL



GRANITE COUNTERTOP KITCHEN #1



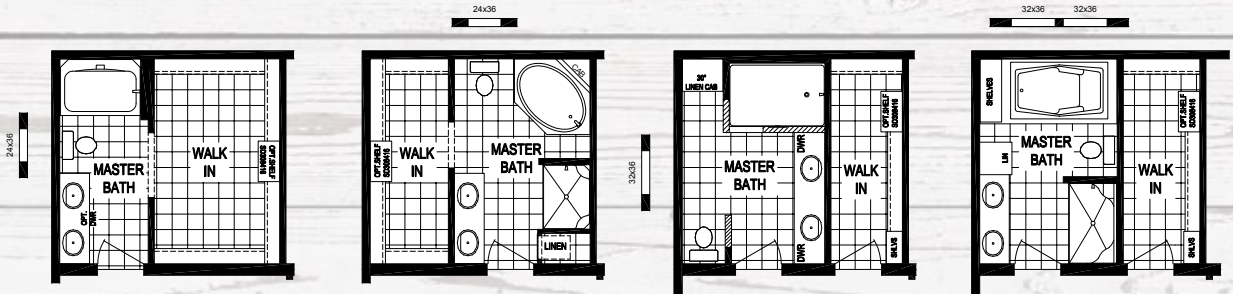
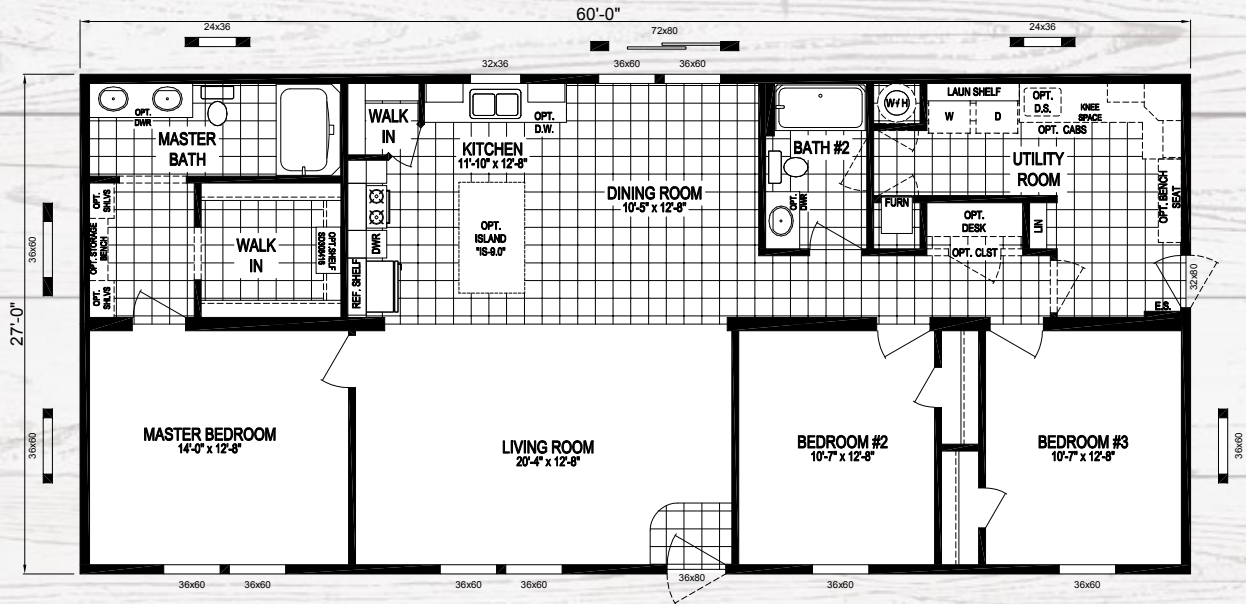


# The Roosevelt

MODEL NUMBER

**6028-9002**

★ 1,620 sq. ft. 3 Bedroom / 2 Bath

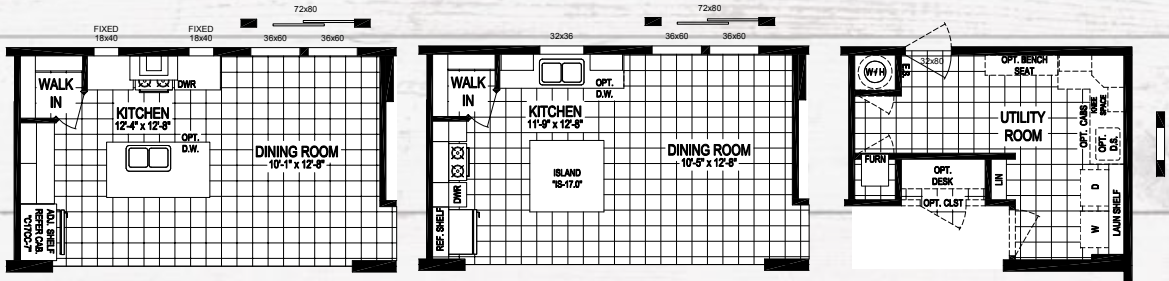


TRADITIONAL BATH OPTION

DELUXE BATH OPTION "A"

OPTIONAL MASTER BATH w/ 72" CERAMIC SHOWER

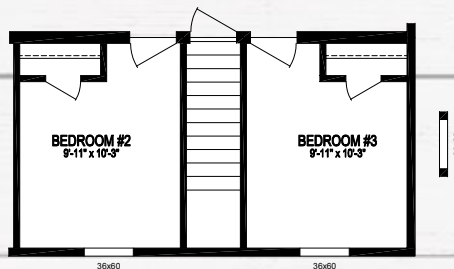
OPTIONAL DELUXE BATH w/ 72" SOAKER TUB



GRANITE COUNTERTOP KITCHEN #2

GRANITE COUNTERTOP KITCHEN #1

REAR ENTRY UTILITY ROOM OPTION



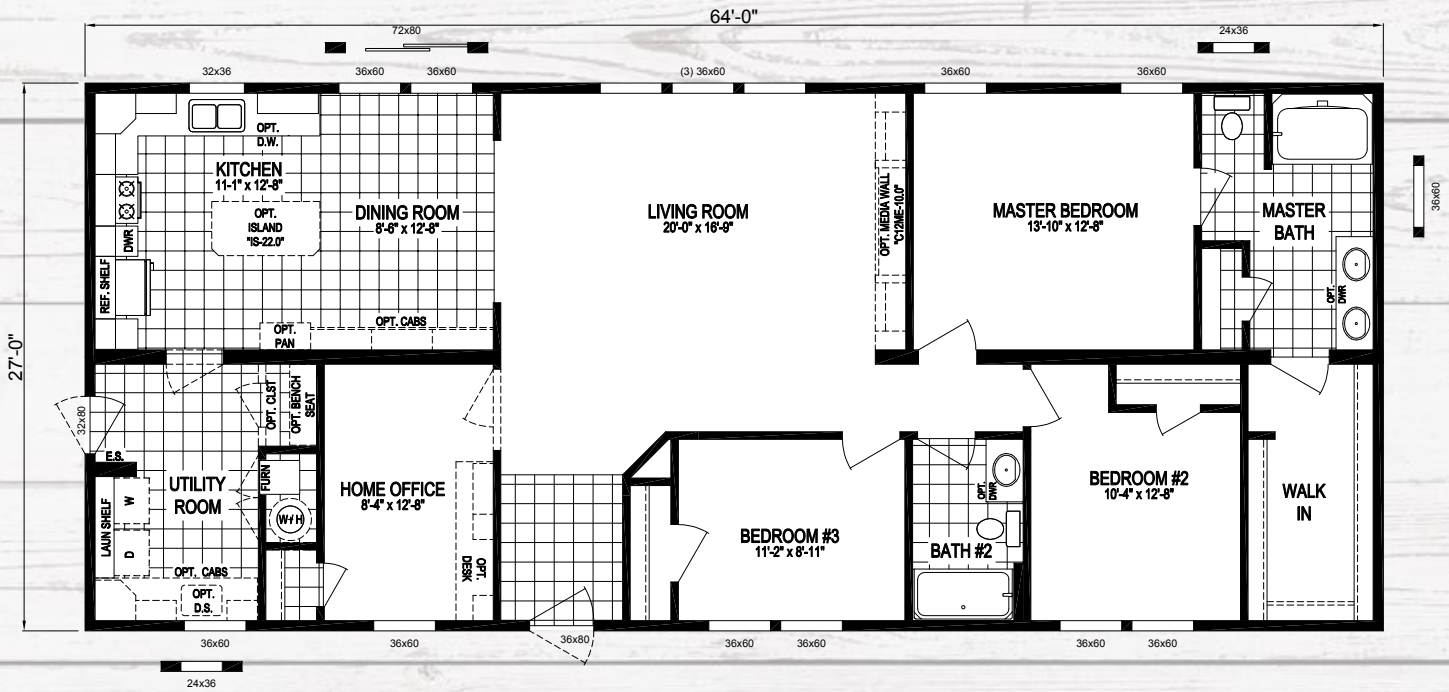
OPTIONAL BASEMENT STAIRWELL



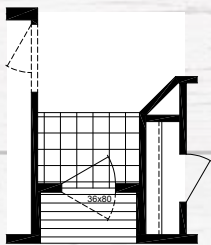
# The Arlington

1,728 sq. ft. 3 Bedroom / 2 Bath ★ 6428-12-1

MODEL NUMBER



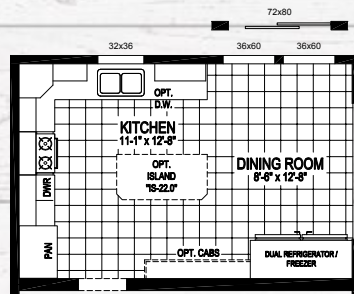
**NOTE:**  
HUD HOMES THAT HAVE A GAS WATER HEATER AND A 5/12 ROOF PITCH WILL REQUIRE AN "SC" ON SITE INSPECTION



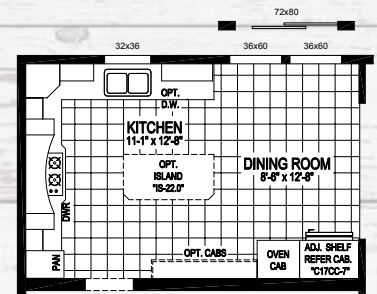
OPTIONAL RECESSED ENTRY



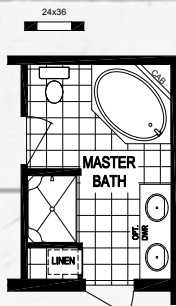
OPTIONAL BASEMENT STAIRWELL



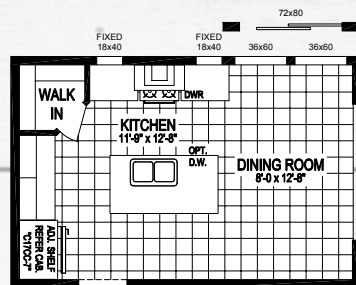
DUAL REFRIGERATOR / FREEZER WITH STANDARD KITCHEN



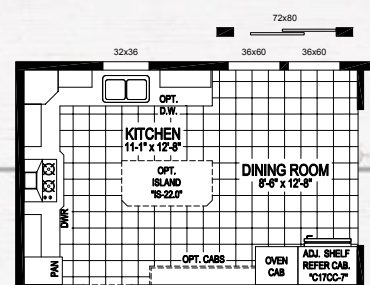
DISTINCTIVE KITCHEN WITH SURFACE COOK TOP, BUILT IN OVEN & MICROWAVE



OPTIONAL DELUXE BATH (OPTION A)



GRANITE COUNTERTOP KITCHEN #2



GOURMET KITCHEN WITH SURFACE COOK TOP, BUILT IN OVEN & MICROWAVE

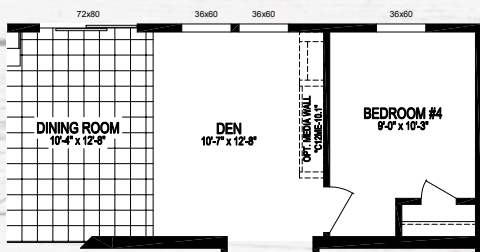
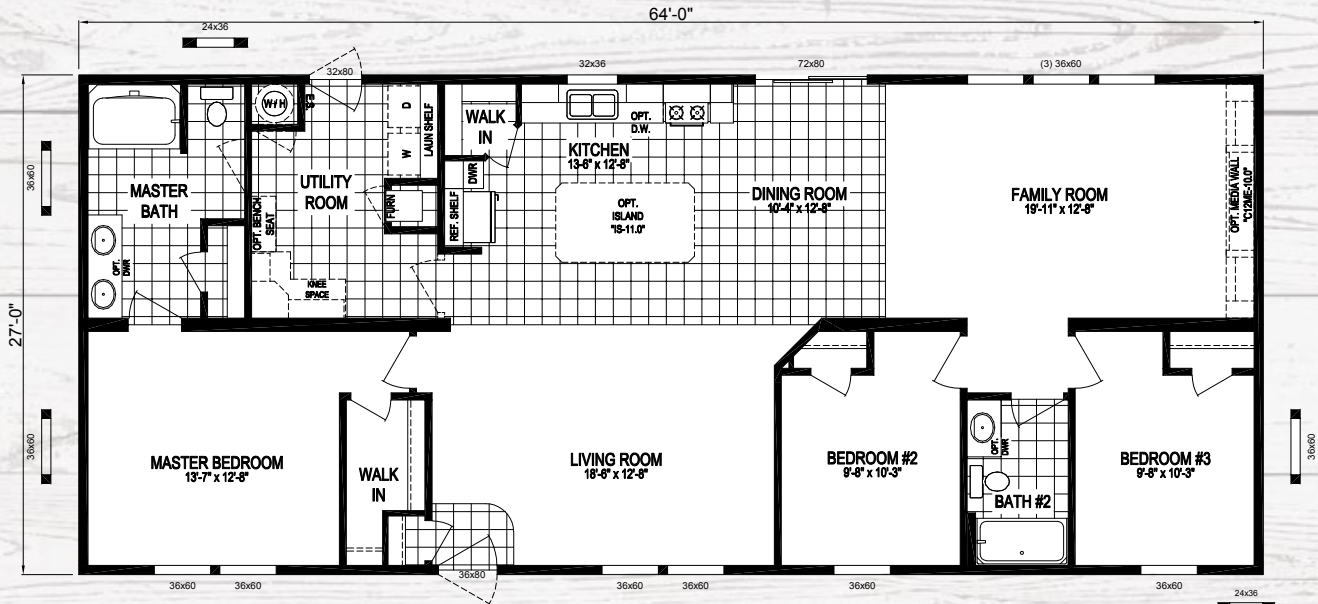


# The Lincoln

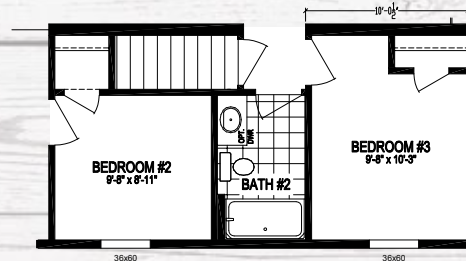
MODEL NUMBER

**6428-9006**

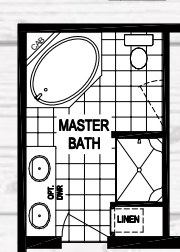
★ 1,728 sq. ft. 3 Bedroom / 2 Bath



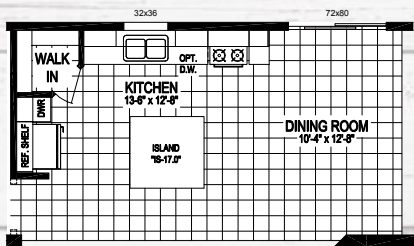
OPTIONAL 4TH BEDROOM



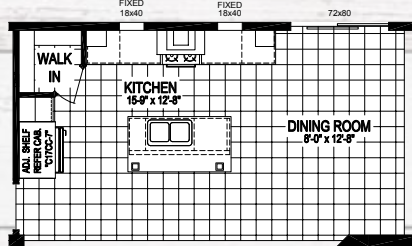
OPTIONAL BASEMENT STAIRWELL



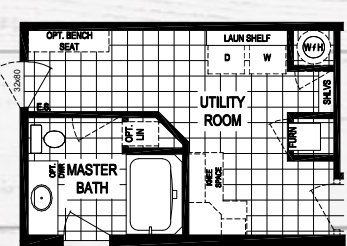
OPTIONAL DELUXE BATH (w/ CORNER DECK TUB) OPT. 'A'



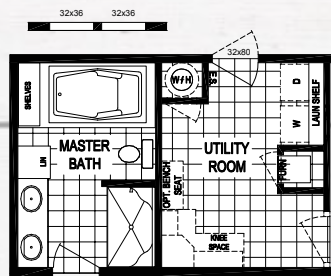
GRANITE COUNTERTOP KITCHEN #1



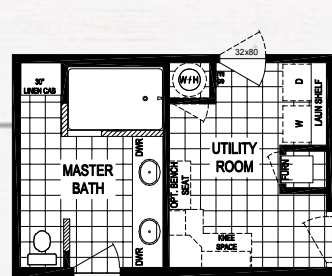
GRANITE COUNTERTOP KITCHEN #3



OPTIONAL END ENTRY



OPTIONAL DELUXE BATH w/ 72" SOAKER TUB



OPTIONAL MASTER BATH w/ 72" CERAMIC SHOWER





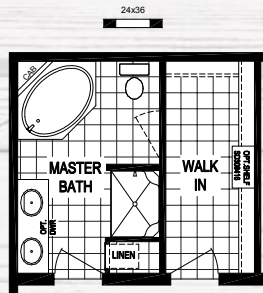
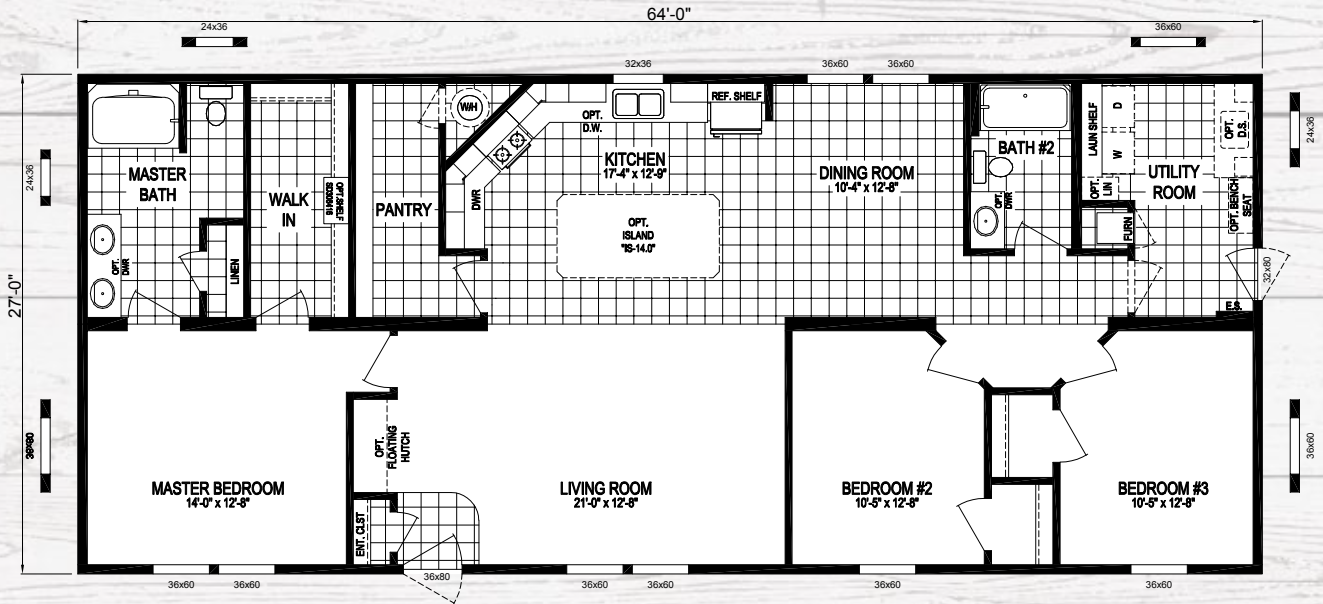


# The Monroe

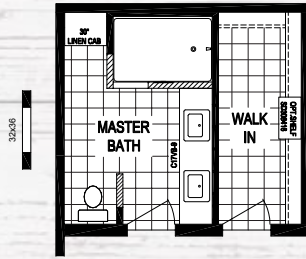
MODEL NUMBER

**6428-9050**

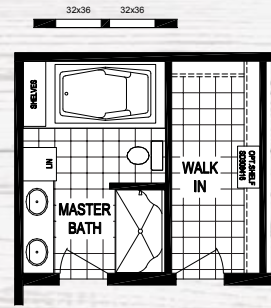
★ 1,728 sq. ft. 3 Bedroom / 2 Bath



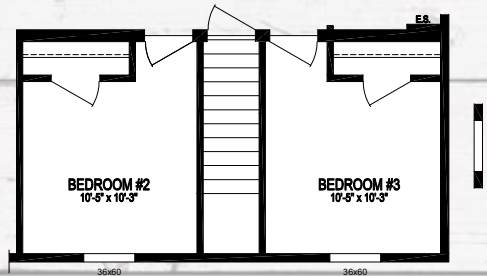
OPTIONAL DELUXE BATH  
(w/ CORNER DECK TUB)  
OPT. "A"



OPTIONAL MASTER BATH w/  
72" CERAMIC SHOWER



OPTIONAL DELUXE BATH  
w/ 72" SOAKER TUB

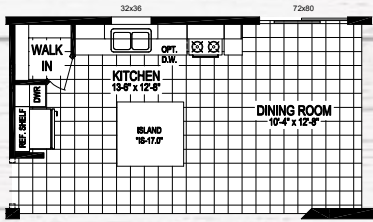
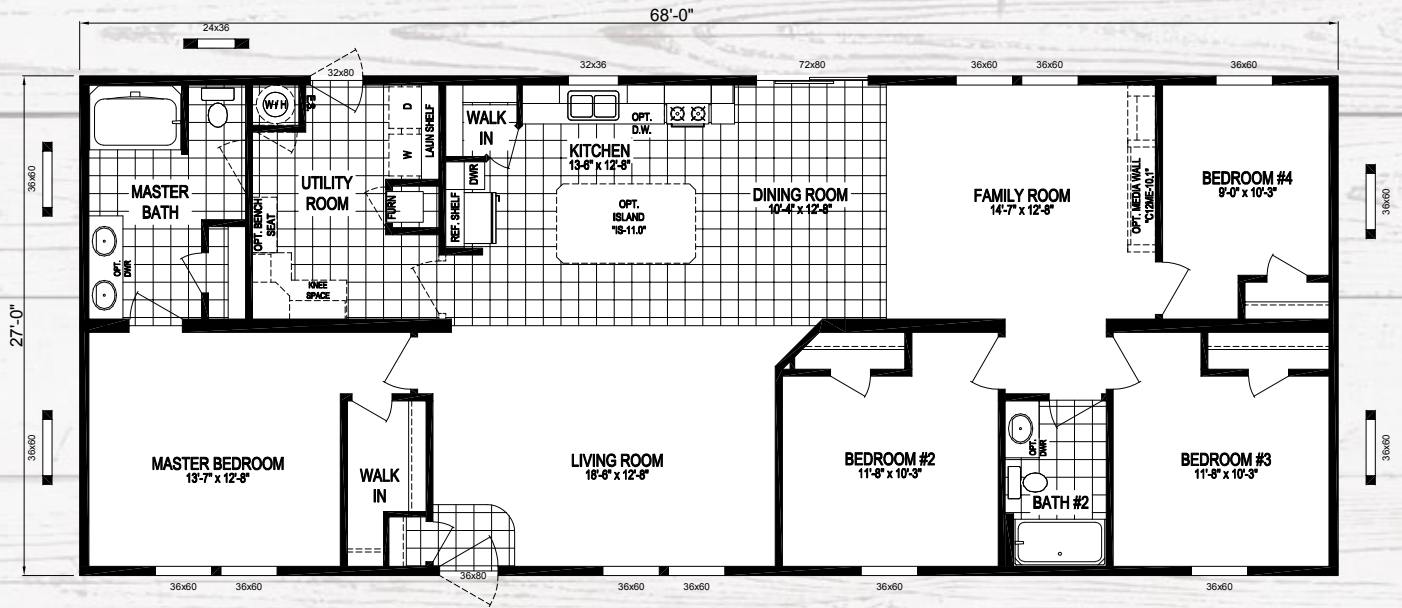


OPTIONAL BASEMENT STAIRWELL

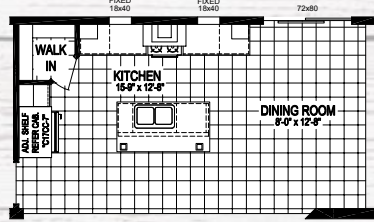


# The Ward

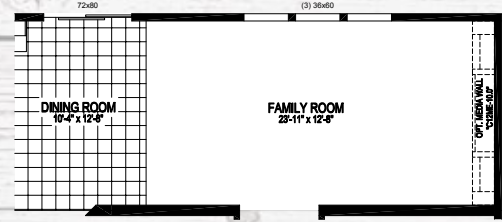
1,836 sq. ft. 4 Bedroom / 2 Bath ★ 6828-9006-1 MODEL NUMBER



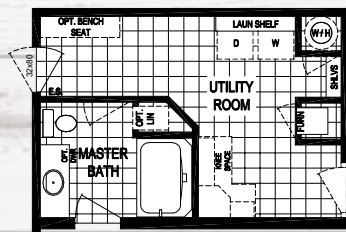
GRANITE COUNTERTOP KITCHEN #1



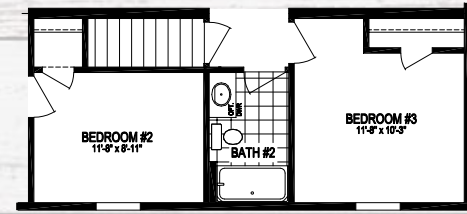
GRANITE COUNTERTOP KITCHEN #3



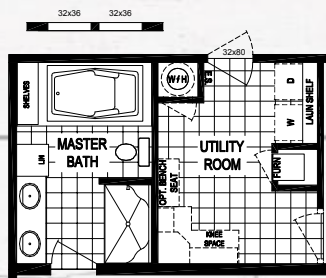
3 BEDROOM OPTION



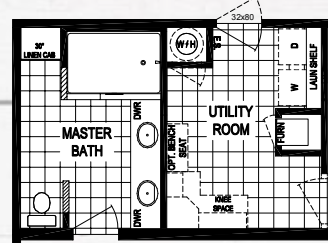
OPTIONAL END ENTRY



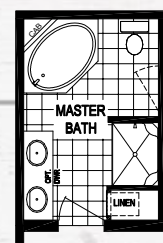
OPTIONAL BASEMENT STAIRWELL



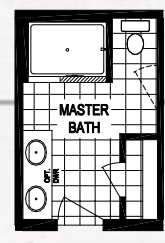
OPTIONAL DELUXE BATH w/ 72" SOAKER TUB



OPTIONAL MASTER BATH w/ 72" CERAMIC SHOWER



OPTIONAL DELUXE BATH (w/ CORNER DECK TUB) OPT. "A"



STD BATH w/ OPT. 60" CERAMIC SHOWER

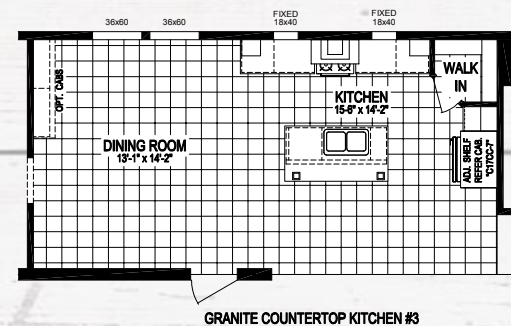
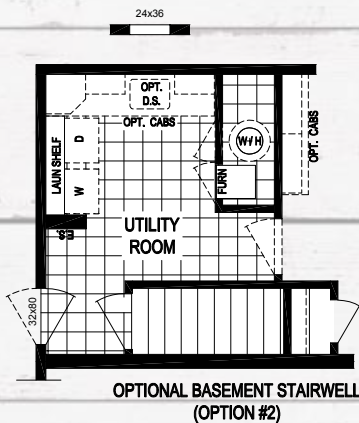
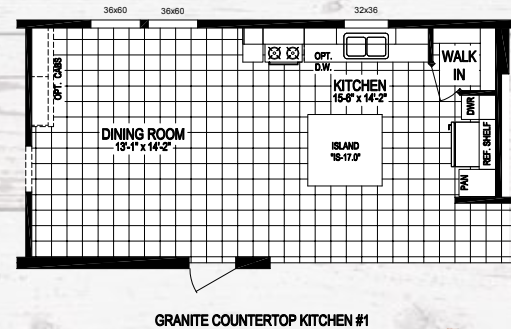
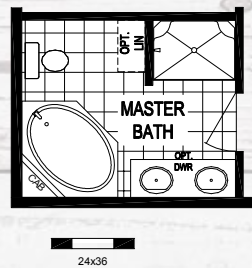
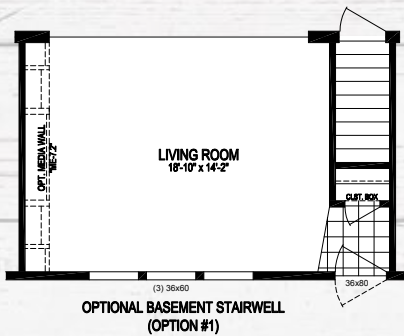
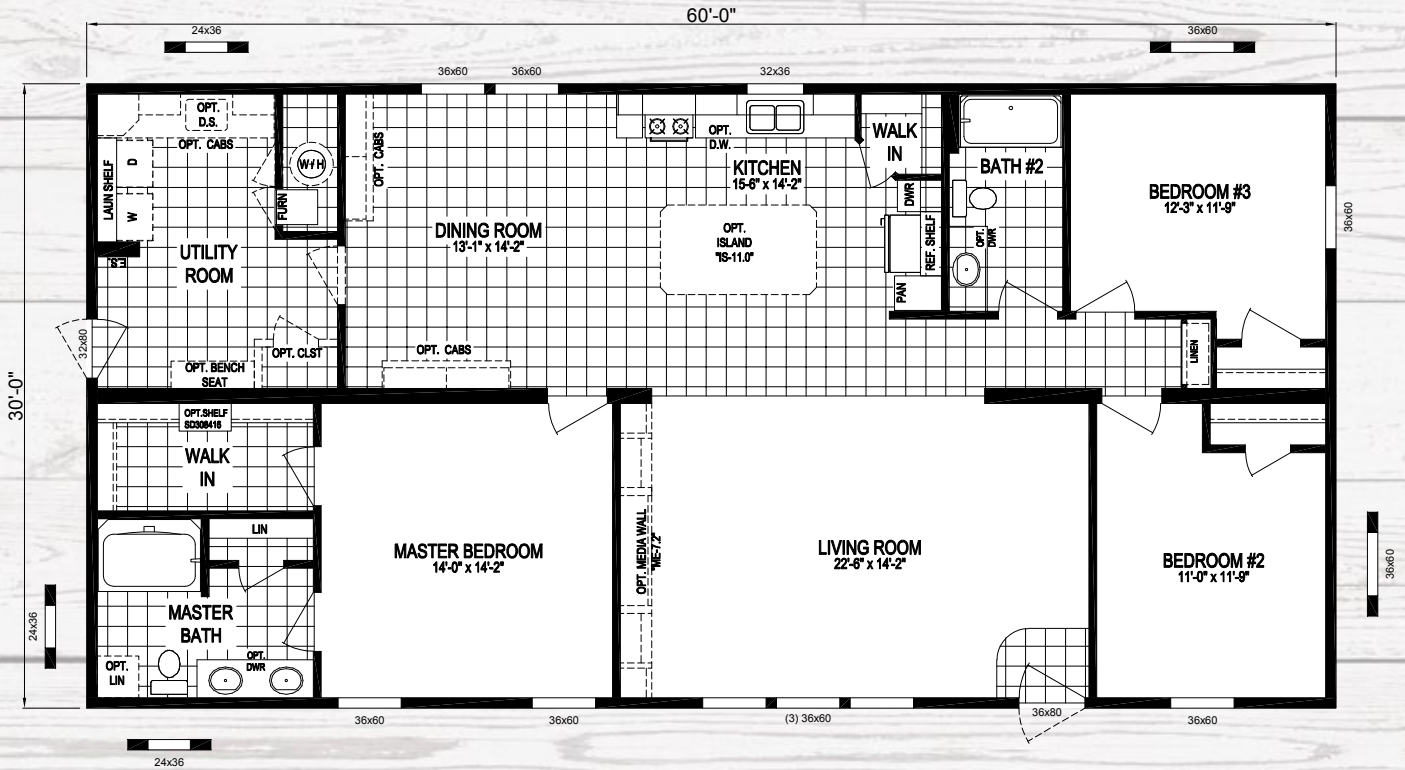


# The Cleveland

MODEL NUMBER

**6030-9024**

★ 1,800 sq. ft. 3 Bedroom / 2 Bath

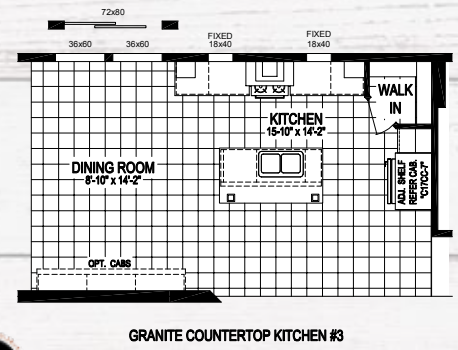
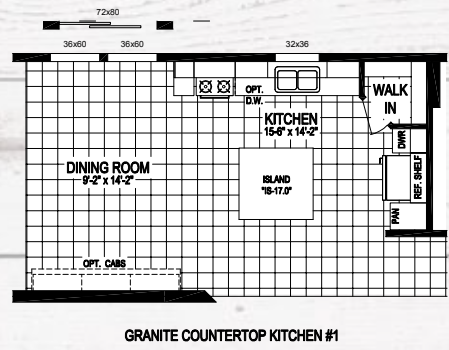
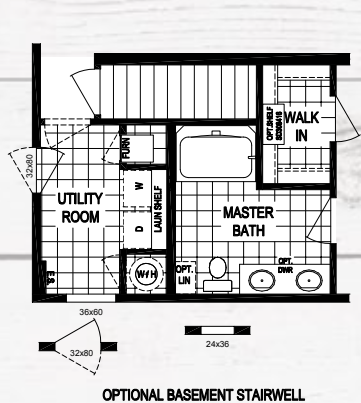
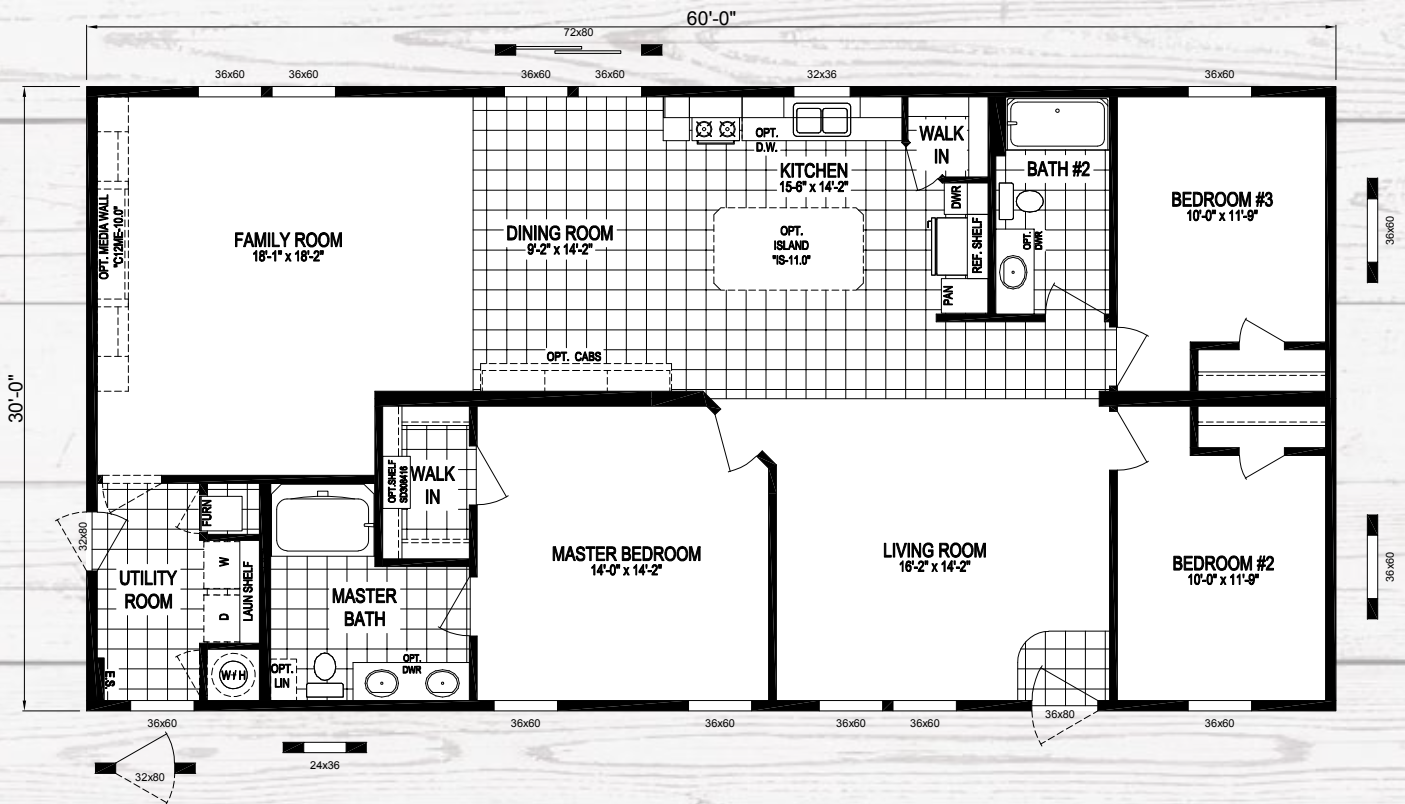




# The Grant

1,800 sq. ft. 3 Bedroom / 2 Bath ★ 6030-9025

MODEL NUMBER



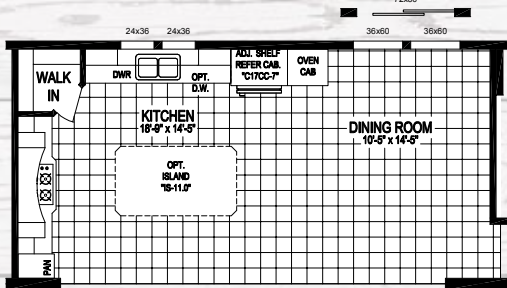
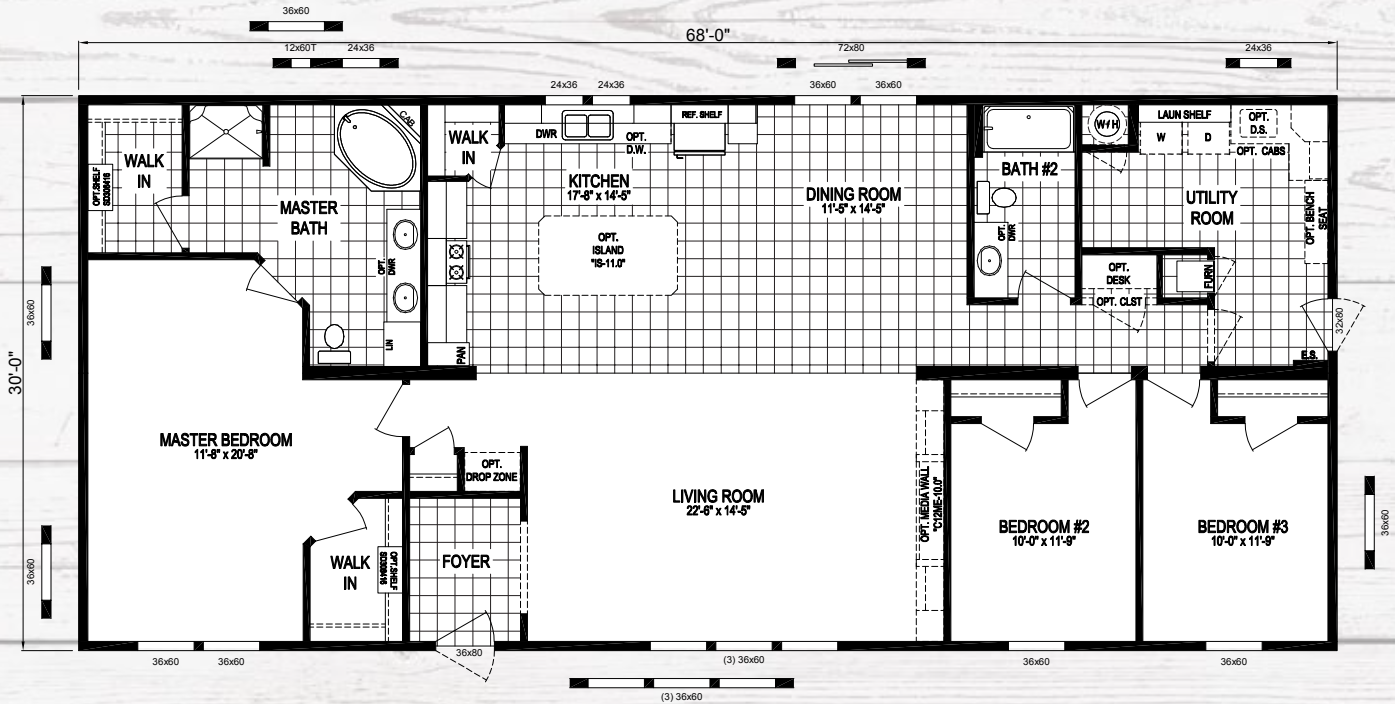




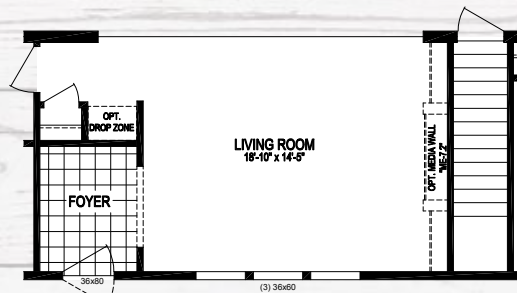


# The Laramie

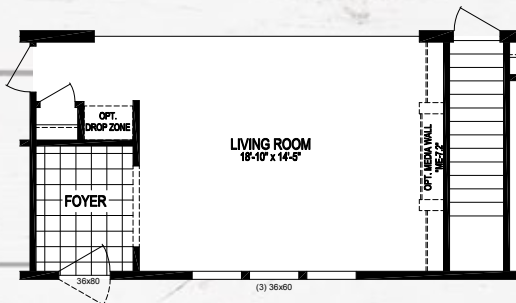
2,040 sq. ft. 3 Bedroom / 2 Bath ★ 6830-8052 MODEL NUMBER



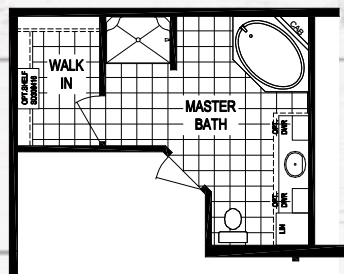
DISTINCTIVE KITCHEN WITH SURFACE COOK TOP, BUILT IN OVEN & MICROWAVE



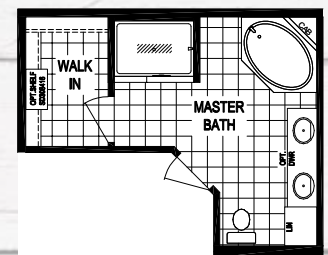
OPTIONAL BASEMENT STAIRWELL



OPTIONAL BASEMENT STAIRWELL



OPTIONAL MASTERBATH VANITY



MASTER BATH VANITY w/ 60" CERAMIC SHOWER

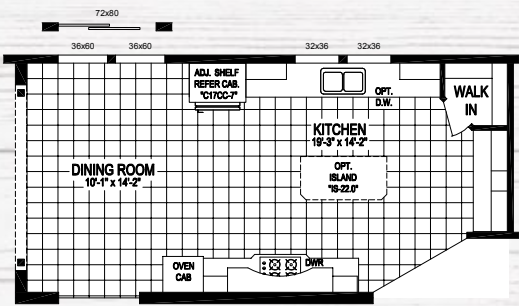
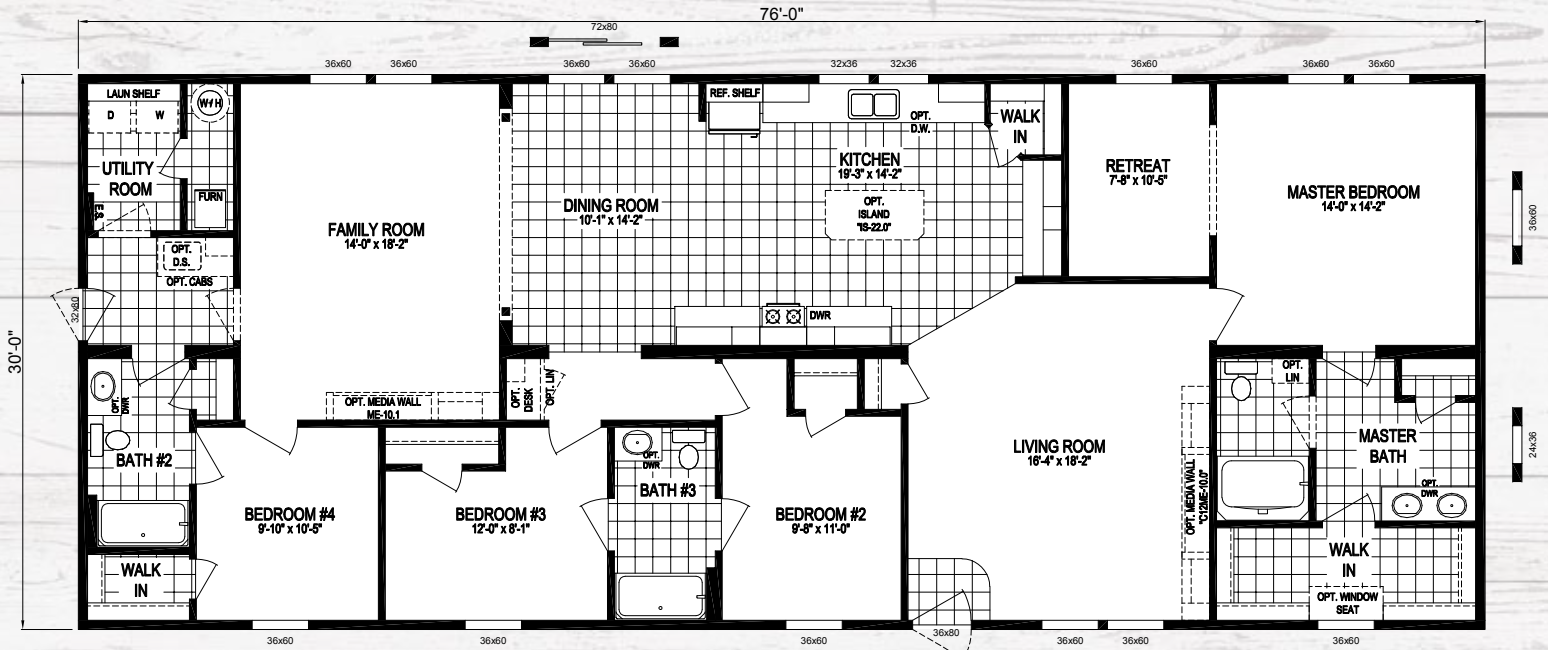


# The Chadwick

MODEL NUMBER

**7630-8028**

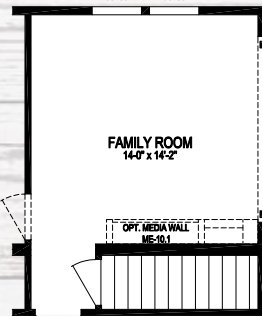
★ 2,280 sq. ft. 4 Bedroom / 3 Bath



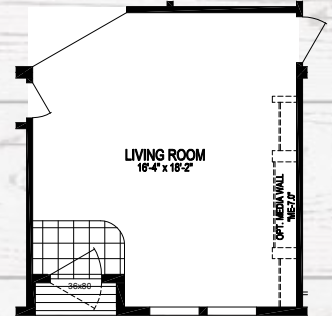
**DISTINCTIVE KITCHEN WITH SURFACE COOK TOP, BUILT IN OVEN & MICROWAVE**



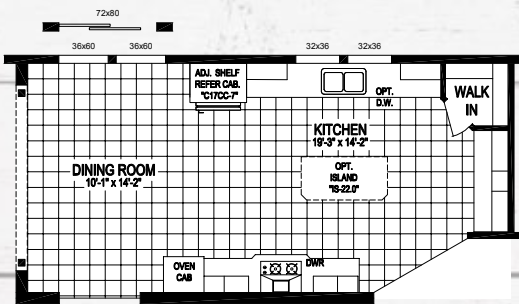
**OPTIONAL MASTER BEDROOM WALK IN CLOSET (REPLACES RETREAT)**



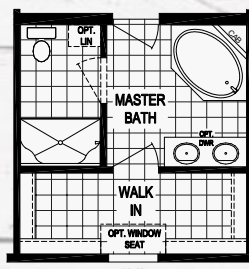
**OPTIONAL BASEMENT STAIRWELL**



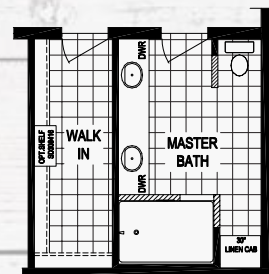
**OPTIONAL RECESSED ENTRY**



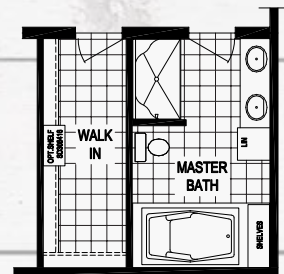
**GOURMET KITCHEN WITH SURFACE COOK TOP, BUILT IN OVEN & MICROWAVE**



**OPTIONAL DELUXE BATH (w/ CORNER DECK TUB)**



**OPTIONAL MASTER BATH w/ 72" CERAMIC SHOWER**

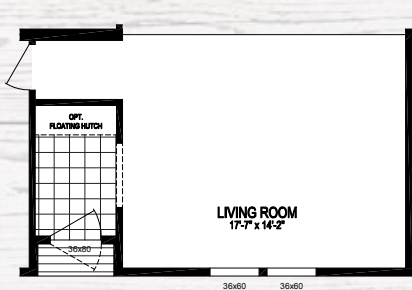
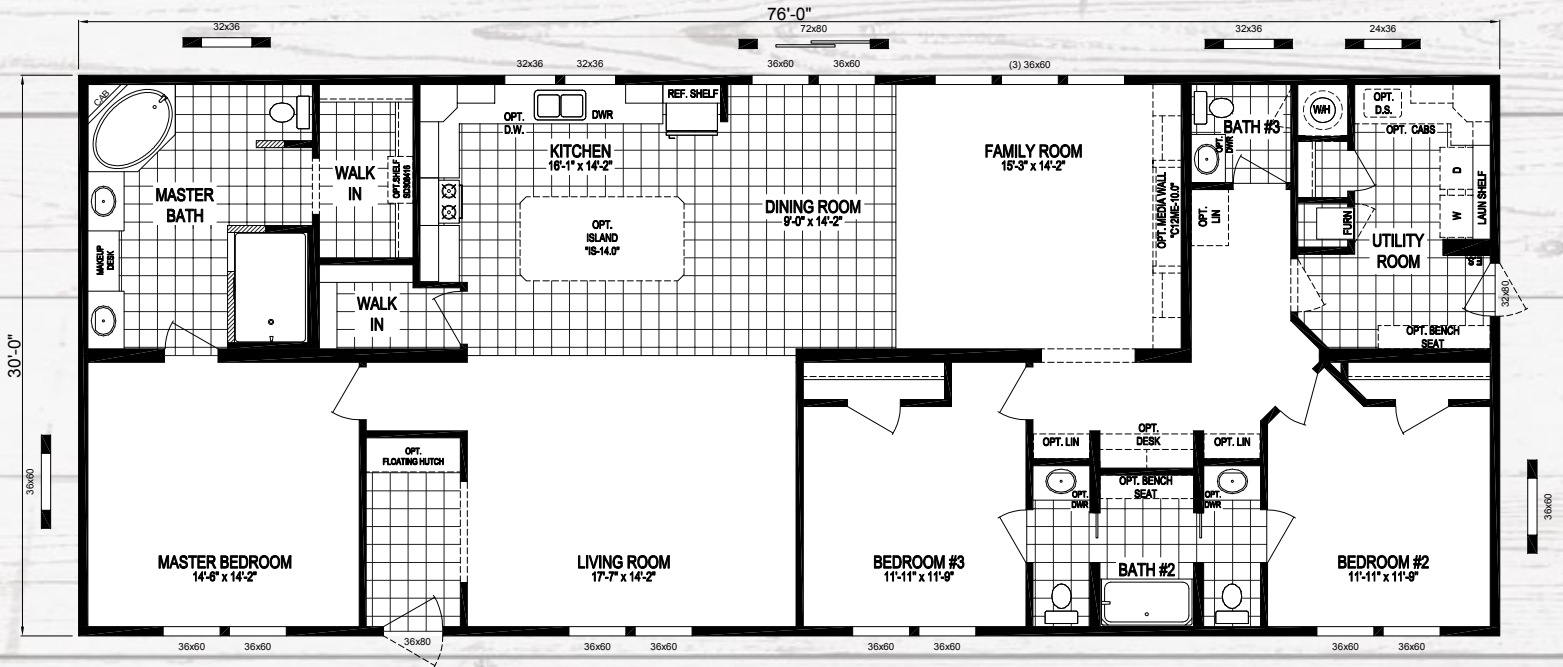


**OPTIONAL DELUXE BATH w/ 72" SOAKER TUB**

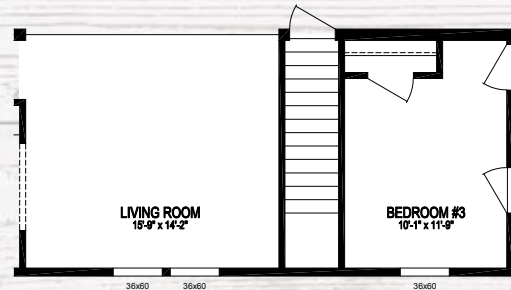


# The Franklin

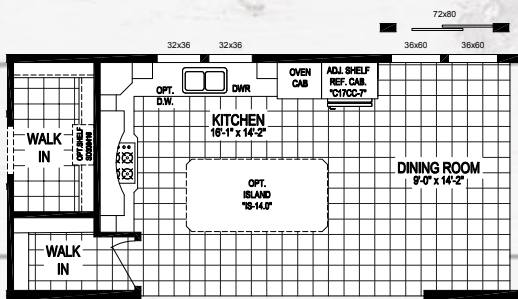
2,280 sq. ft. 3 Bedroom / 3 Bath ★ 7630-9051 MODEL NUMBER



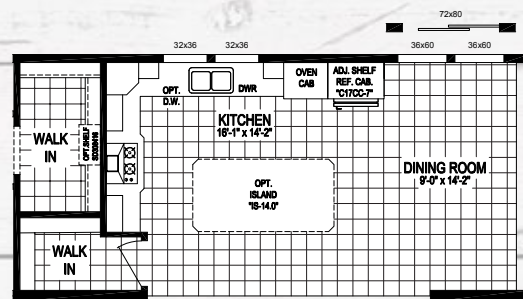
OPTIONAL RECESSED ENTRY



OPTIONAL BASEMENT STAIRWELL



DISTINCTIVE KITCHEN WITH SURFACE COOK TOP, BUILT IN OVEN & MICROWAVE



GOURMET KITCHEN WITH SURFACE COOK TOP, CONTEMPORARY RANGE HOOD, BUILT IN OVEN & MICROWAVE





# Dormer Options



**10' Open Dormer**  
3/12 Pitch Only



**20' Hinged Dormer w/6' Eyebrow**  
5/12 Pitch Only



**20' Hinged Dormer w/Continuous Eave**  
5/12 Pitch Only



**20' Open Dormer**  
3/12 Pitch Only



**20' Open Dormer w/Eyebrow**  
3/12 Pitch Only



**20' Open Hinged Dormer**  
5/12 Pitch Only







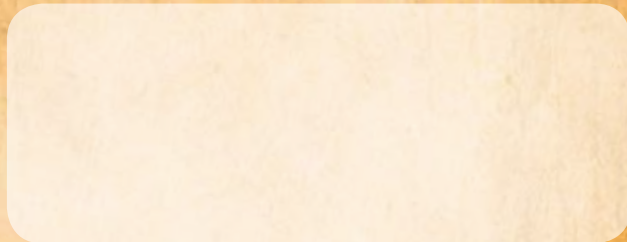


**Clayton**  
middlebury

437 North Main Street  
Middlebury, Indiana 46540  
Phone: (574) 825-7500  
Fax: (574) 825-7569

[www.crestmiddlebury.com](http://www.crestmiddlebury.com)

**YOUR AUTHORIZED  
CREST HOUSING RETAILER**



Because our company has a continuous product update process, specifications, floor plan lay-out and dimensions shown on this literature are subject to change without notice or obligations. Construction and design specifications as well as features presented conceptual, therefore should not be used as actual construction data and may not be offered in all series or models. Our Retailer will provide accurate, up-to-date information on available options and specifications for your home.