



# Crowtail- Starter Kit

*Easy Platform to Step into Arduino*

The perfect kit for customers step into the electronics and Arduino world. It is basic functional modules that consists of a Base Shield and various modules with standardized connectors, each Crowtail module has its specific function, with which users can create projects with only plugging them together.

Detailed documentation and user guide can be downloaded at:  
<http://www.elecrow.com/crowtail-starter-kit-p-1303.html>



### Package list

- Crowtail Base Shield x1
- Crowtail Button x1
- Crowtail Buzzer x1
- Crowtail LED x1
- Crowtail LED Green x1
- Crowtail LED Yellow x1
- Crowtail Ultrasonic Sensor x1
- Crowtail Touch Sensor x1
- Crowtail Buzzer x1
- Crowtail Light Sensor x1
- Crowtail Temperature Sensor x1
- Crowtail Humidity Sensor x1
- Crowtail IR Non-Contact x1
- Crowtail IR Sharp x1
- Crowtail IR Sharp x1
- Crowtail IR Sharp x1
- Crowtail IR Sharp x1

100%  
NEW



 ELECROW

1504-1023



PASS

Crowtail  
Flame Sensor v1.0

 ELEGROW

[www.elegrow.com](http://www.elegrow.com)



Crowtail  
Flame Sensor v1.0

 **ELEGROW**

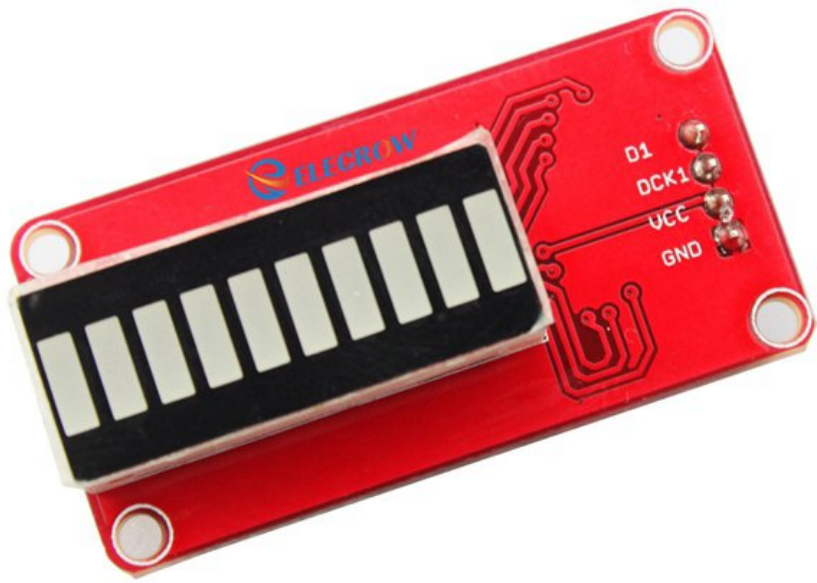
[www.elegrow.com](http://www.elegrow.com)

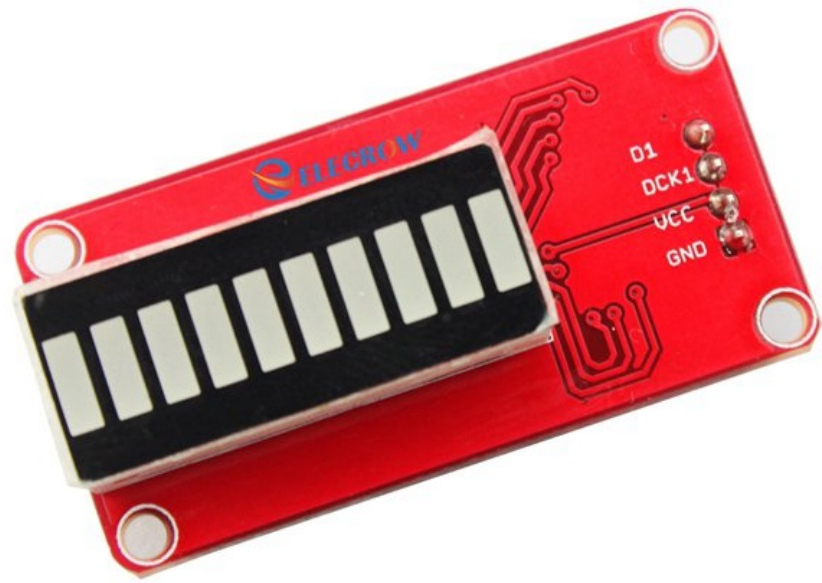
PASS

Crowtail- GPS v1.0

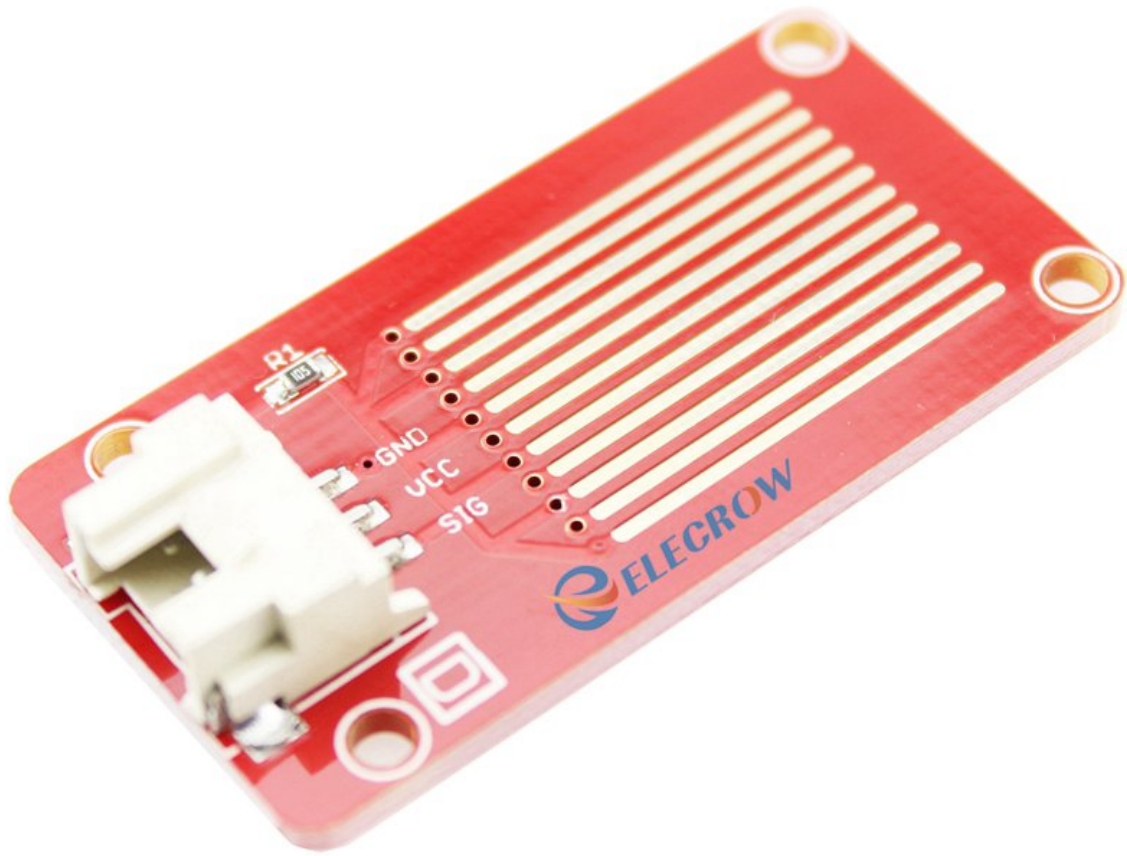
[www.elecrow.com](http://www.elecrow.com)



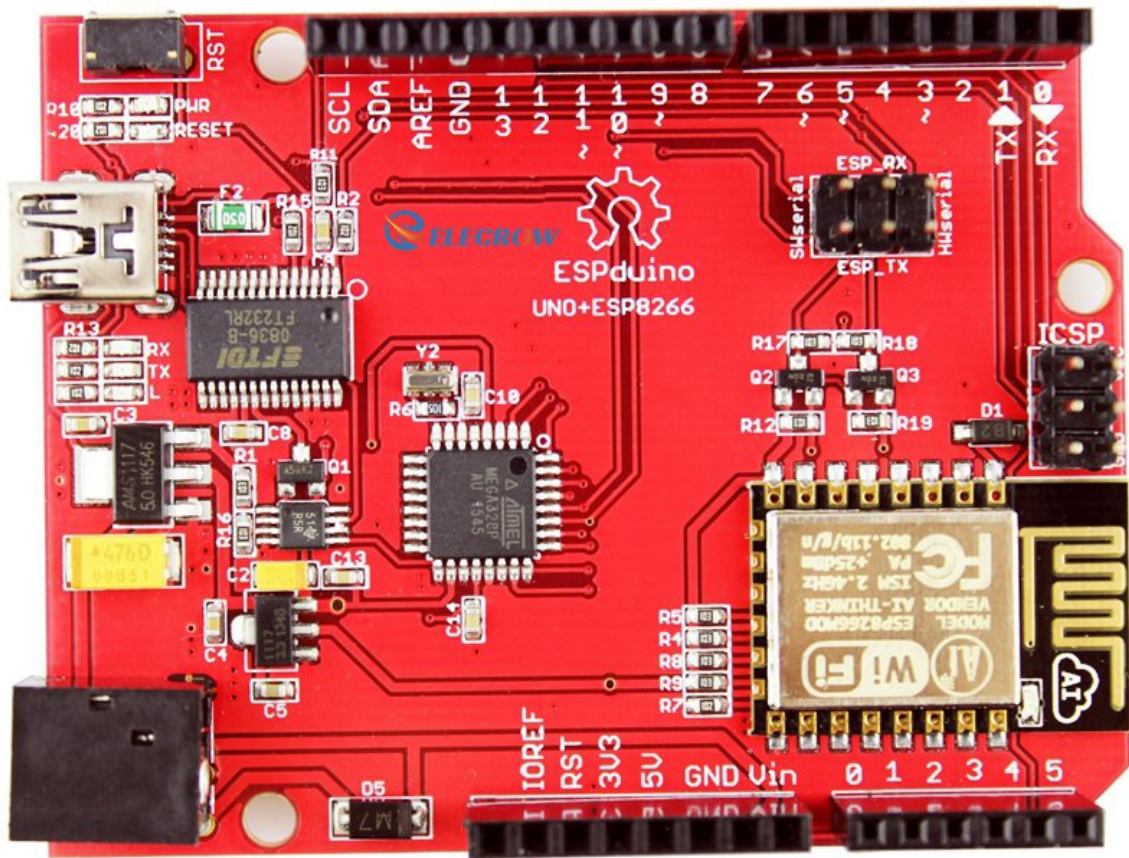


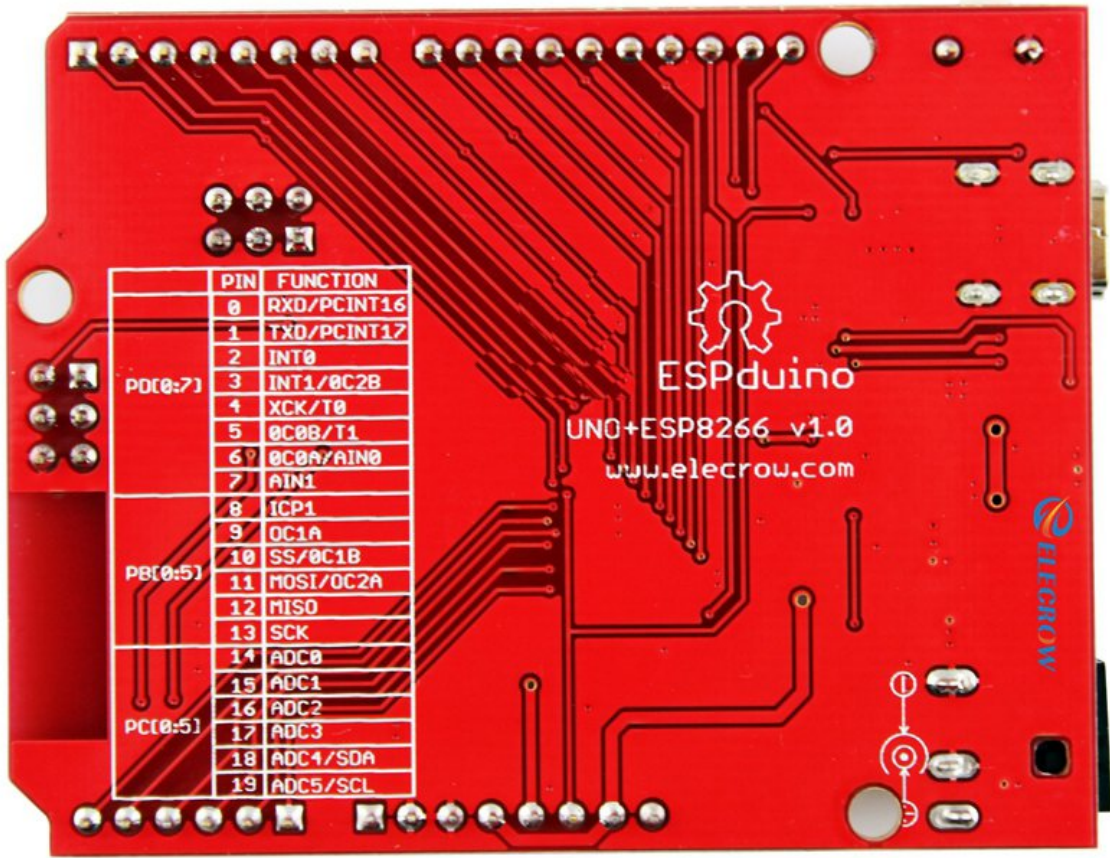












|          | PIN | FUNCTION    |
|----------|-----|-------------|
| PDI[0:7] | 0   | RXD/PCINT16 |
|          | 1   | TXD/PCINT17 |
|          | 2   | INT0        |
|          | 3   | INT1/0C2B   |
|          | 4   | XCK/T0      |
|          | 5   | 0C0B/T1     |
|          | 6   | 0C0A/AIN0   |
|          | 7   | AIN1        |
| PB[0:5]  | 8   | ICP1        |
|          | 9   | OC1A        |
|          | 10  | SS/0C1B     |
|          | 11  | MOSI/OC2A   |
|          | 12  | MISO        |
| PC[0:5]  | 13  | SCK         |
|          | 14  | ADC0        |
|          | 15  | ADC1        |
|          | 16  | ADC2        |
|          | 17  | ADC3        |
|          | 18  | ADC4/SDA    |
|          | 19  | ADC5/SCL    |

  
ESPduino

UNO+ESP8266 v1.0  
www.elecrow.com

  
ELECROW

