



Spectrum Single-Jets

Enduro/Fire Service Meter

## SPECTRUM SINGLE-JETS

[Download PDF](#)

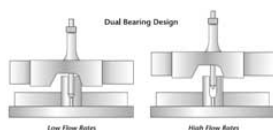
### Applications

The Spectrum Single-Jet Meter is the widest ranged, single-measuring element meter available to U.S. utilities. The operation of the single jet element allows the meter to be applied in the vast majority of potable cold water, small commercial applications. These meters are designed with a very high range, including low flow performance equaling or exceeded all other metering technologies. Coupled with the advanced innov8 registers, the Spectrum single-jets are the meter of choice for your revenue assurance and water loss programs.

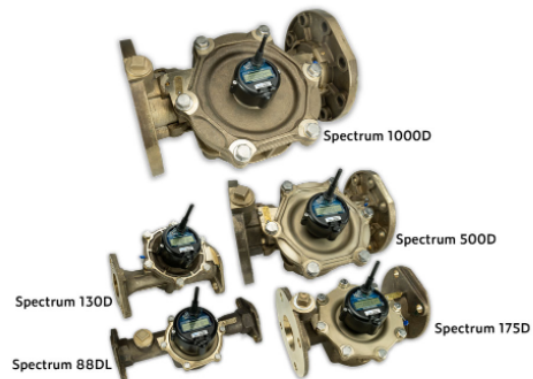
All Spectrum Model-D meters are top-loading, chamber designs which allow for field maintenance and repairs.

### Operations

Incoming water rotates a suspended impeller that is magnetically linked to the register. A low friction tungsten carbide bearing supports the impeller at low flow rates while a tungsten carbide thrust bearing provides the support at high flow rates. This unique “dual bearing” design provides unparalleled accuracy and durability at both high and low flows.



To maintain accuracy, the meter must be installed horizontally ( $\pm 10^\circ$ ) in the direction of water flow. The Spectrum 88DL and 88 DLT come with an integral test port on the outlet. Although regular maintenance is not required, the Spectrum Model D meters have a top-loading measurement chamber for simple access without removing the meter



### Design Features

- High accuracy below AWWA standards
- Wide range—1000:1 turndown
- Superior low flow registration
- Compact and light
- Convenient options for various lengths and connections
- Low pressure drop
- No regular maintenance
- Excellent performance in adverse water conditions
- Unaffected by sand or small debris in line
- No straight pipe requirements – upstream or downstream
- No strainer requirement
- 5-year flange-to-flange warranty
- 20-year warranty on meter body
- Compatible with all innov8 registers and associated AMR/AMI

from service. The chamber is bolted to the meter body and secured with a tamper seal.

All Spectrum Model D meters utilize innov8 registers. These sealed electronic registers provide a high resolution interface to the meter and have multiple cellular, AMR, AMI and SCADA outputs. All registers are attached with a robust tamper-resistant housing.

capabilities.

### Materials

All Spectrum Model-D meters are designed and manufactured to meet or exceed AWWA C712 standard design and performance specifications. All Models are maintained with NSF-61G lead-free certifications.

### Standards

AWWA C712 – Single-Jet Meters  
NSF-61G – Drinking Water System Components Health Effects

- Mechanical Specifications
- Flow and Pressure Specifications
- Flow Accuracy and Pressure Drop
- Registers

### Warranty

Please contact your Metron representative for formal warranty certificates.

### Legal

Due to updated regulations and product improvements, Metron-Farnier reserves the right to change the product specifications without notice.

**METRON SUSTAINABLE SERVICES**  
5665 Airport Blvd.  
Boulder, CO 80301

P: 303.217.5990  
customerservice@metron-s2.com

**METRON-FARNIER**  
Smart Water Meters & Systems

**SUBMETERING**  
How It Works  
Benefits  
FAQs

**METRON SUBMETERING**  
About Us  
Success Stories  
WaterScope Videos

**GET THE DRIP NEWSLETTER**

**NAME \***

First

Last

**EMAIL \***

**SIGN UP**

**NAME \***

First

Last

**EMAIL \***

**PHONE \***

(###) ###-####

**PROPERTY CITY & STATE \***

City, State

**NUMBER OF UNITS \***

Number of Units

**GET STARTED**

© Metron-Farnier 2021 | Website Design by Toolbox Creative