

NEWS



ANTICIPATING CONTINUED COVID-19 NEEDS: LESSONS FROM YESTERDAY

Anabelle Nuelle | September 28, 2020

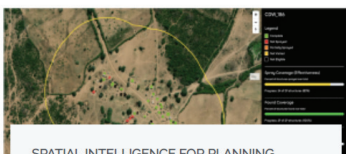
At the time of writing, 33.7 million cases of COVID-19 have been reported worldwide. Regardless of socioeconomic standing, health systems around the world have shuddered beneath the weight of an international pandemic, leading to overflowing ICUs, overextended health care resources...



REVEAL AND GRID3 BRING GEOSPATIAL DATA TO THE GROUND FOR MALARIA PREVENTION

Anabelle Nuelle | July 26, 2020

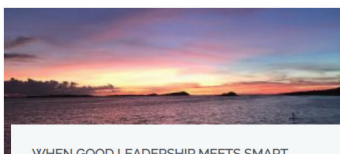
Zambia, along with a handful of countries within Southern and Eastern Africa, is on track to reduce malaria cases 40% by 2020. Relative to 2015, the country's progress so far translates to as many as 700,000 cases prevented annually. Such tremendous strides...



SPATIAL INTELLIGENCE FOR PLANNING, TARGETING, AND REAL-TIME MANAGEMENT OF INTERVENTIONS IN LOW-RESOURCE SETTINGS

Kyle Hutchinson | June 28, 2020

The Denominator Challenge Accurate quantification of a population, and the ability to locate this population with precision, are fundamental requirements for reporting the true coverage and effectiveness of public health interventions—such as childhood immunizations, indoor residual spraying (IRS) for malaria...



WHEN GOOD LEADERSHIP MEETS SMART TECHNOLOGY

Parysa Oskoupour | November 14, 2019

On a sweltering summer day in Siavonga, a lakeside jewel of Zambia's Southern Province, I sat down with Mr. Bisael Phiri, the District Surveillance Officer for Siavonga District, to get his perspective on the malaria situation in his region and...



REVEAL TAKES AIM AT MALARIA PARASITE THROUGH MASS DRUG ADMINISTRATION CAMPAIGNS IN SOUTHERN PROVINCE, ZAMBIA

Parysa Oskoupour | September 18, 2019

Deep in Zambia's Southern Province, in a town a three-hour drive away from the district's largest city and economic hub (Siavonga), lies Manchamywa Health Facility. This clinic serves as the focal point for the health needs of hundreds of people...



FINDING A VILLAGE NEVER BEFORE VISITED BY IRS

Ernest Mulenga | April 16, 2019

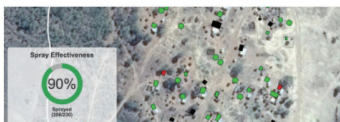
Background The Reveal tool is more than just a mobile data collection tool that improves data quality and timeliness. The tool provides spray teams with maps to navigate to areas that might otherwise be difficult to find. These maps are...



OPERATIONALIZING SPATIAL INTELLIGENCE MEANS SAVING LIVES

Anna Winters | March 21, 2019

As a spatial epidemiology PhD student, I was drawn to questions about how the environment relates to and facilitates vector-borne disease (diseases that are spread by vectors like mosquitoes). These questions and interests tend to lead spatial epidemiology graduate school...



IT'S ALL ABOUT THE MAPS

Anna Winters | January 15, 2019

The Sustainable Development Goals (SDGs) set out big goals and targets—and countries are making real progress in some cases. Under five mortality has reduced by 58% in under 20 years. New drugs and vaccines are continuously coming to market. Some...

HELLO WORLD!

Reveal | December 15, 2018

Stay tuned here for the latest news concerning Reveal!