

Saga

Scale SKK0 series
Kitchen Scale
Readme



INDEX

1.Specifications	2
2.Before Starting	3
a.Battery Installation	3
b.Screen and buttons	4
3.Start Weighing	5
a.Scale setup	5
b.Take readings	7
c.Tare	8
4.Errors and Troubleshooting	10
5.Maintenance	12

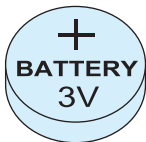
1. Specifications

Load cell:	4x high accuracy load cells
Capacity:	11lb or 5000g; 22lb or 10000g
Division:	0.1oz or 2g
Display:	2" LCD
Measure modes:	LB & OZ ; G ; fl.oz ; ml
Other features:	Auto turn off; Tare function; Ultra low profile design

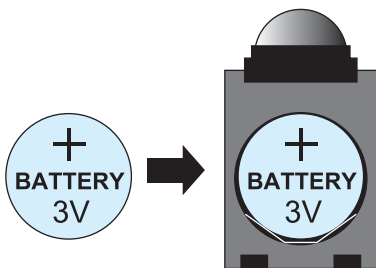
2. Before Start

a. Battery Installation

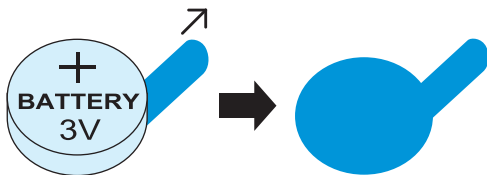
This device is powered by 1 x CR2030 lithium battery.



Set the battery into the “ON-DUTY” slot with the “+” side facing out.

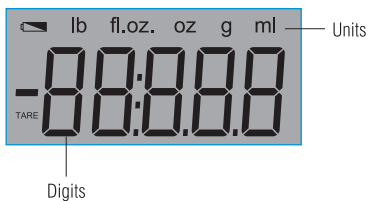


If the battery is pre-installed, there may be a plastic tag under the battery. Please remove this battery insulator before start.



b. Screen and buttons

Screen layout:



Ontare:

Turn on/off, zero out



Mode:

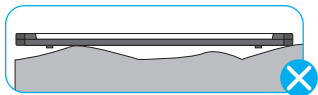
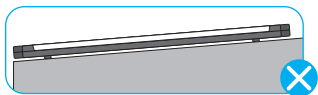
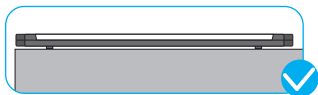
Switch between units



3. Start Weighing

a. Scale setup

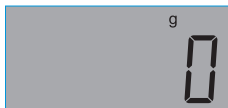
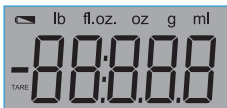
Place the device on a flat and solid surface.



Press "On/tare" button once to turn on the scale.



After the greeting message “0.0” displayed on the screen.

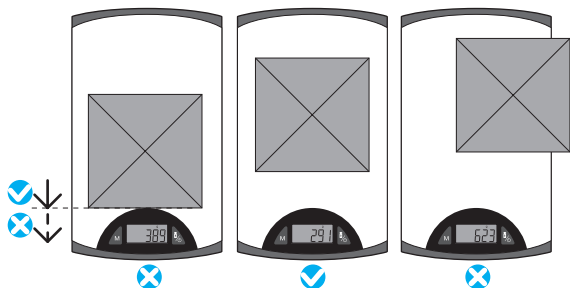


Press “mode” button, to switch between units of measure.



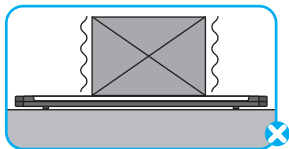
Now you can place the item/s on the scale.

Please place the item at the center of the platform, and do not exceed the edge of the front panel.



b. Take readings

Do not disturb your scale, when numbers on the scale stop changing you can take the reading. Here are some examples:



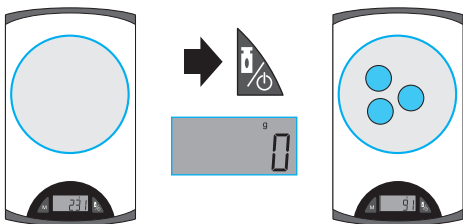
c. Tare

By pressing the "Tare" button you can force the device to zero out.

Tips

*Get the net weight of item in a container:

Place an empty container on the scale, then press "Tare", then you can drop item/s into the container and measure the net weight of item/s in it.



Example

*Apply a muffin recipe:

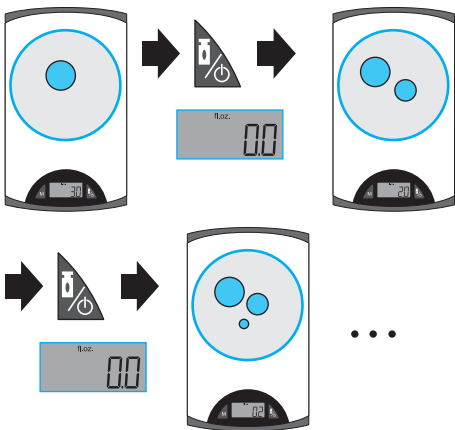
- Setup a container: zero out the scale.
- + butter 3 oz, then press "Tare"
- + sugar 2 oz, then "Tare" again
- + salt 0.2 oz, whisk them together, then "Tare"
- + 8.5 oz flour, --- "Tare"

- + 0.2 oz baking powder, ---"Tare"
- + Milk 3.5 oz, ---"Tare"
- Get 2 eggs beat well, put them in,
- + 2-3 oz mix-ins (blueberry, chocolate bits, other fruit or anything you like)

then mix them all together

- Divide the batter amongst muffin cups
- Place in the oven bake about 20-25 min (350°F/ 175°C)

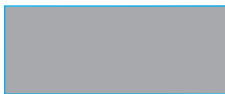
You may use tare function to apply any other recipes.



4. Errors and Trouble shooting

Not turning on:

Please check the battery installation, make sure the battery is installed correctly. Replace the battery if it is drained.



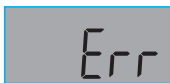
Not accurate:

Tips may help:

1. Please be sure the device is level. And make sure it is on a hard, solid surface.
2. Place item/s at the center of the scale.
3. Keep the device away from any devices that may have radio transmission such as cellphones, wireless routers etc. and keep the scale away from strong magnet, and extreme hot, cold or humidity environment.

Error codes:

1.Err: over loaded



Remove the load from the scale immediately.

2.Lo: battery low



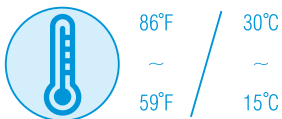
Replace the battery

5. Maintenance

1. You can clean your scale with damp cloth, but try to keep your scale dry and **DO NOT** wash your scale.



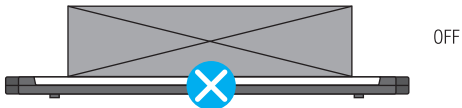
2. Recommended operating temperature:



3. Do not over load



4. When the scale is not in use, please empty the tray, do not put the scale upset down.



5. If the scale won't be used for a long time, please remove the battery or store the battery in the back up slot. This will save battery life and prevent battery leaks.

Other:

This is not a "legal for trade" device.

