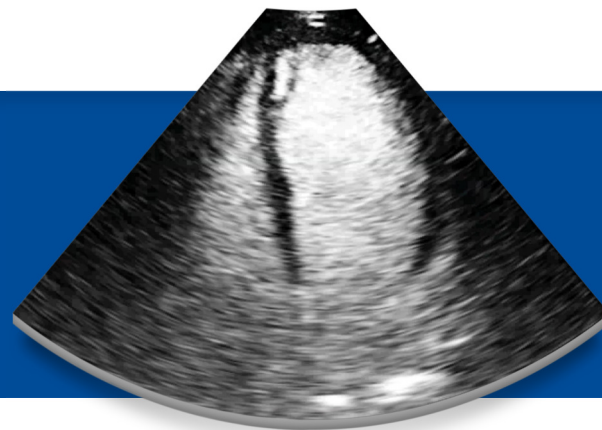


# LUMASON®

(sulfur hexafluoride lipid-type A microspheres)  
for injectable suspension, for intravenous  
use or intravesical use






# KNOW NOW

with LUMASON



Echocardiographic images shown are representative images from reference studies. Individual results may vary.

## Helps you obtain quality diagnostic images at the point of patient care

-  Image quality<sup>1</sup>
-  Proven safety and efficacy profile<sup>1</sup>
-  Portable kit<sup>1</sup>
-  No refrigeration or activation devices required<sup>1</sup>
-  Support from Bracco Diagnostics Inc.—the company that understands your contrast imaging needs

### Ordering Information

<b>NDC#</b>	0270-7099-16
<b>Product description</b>	LUMASON (sulfur hexafluoride lipid-type A microspheres), 25 mg/vial
<b>Packaging</b>	5 kits per carton



Customer Service: 1-877-BRACCO 9 (1-877-272-2269)

**References:** **1.** LUMASON (sulfur hexafluoride lipid-type A microspheres) for injectable suspension, for intravenous use or intravesical use full Prescribing Information. Monroe Twp., NJ: Bracco Diagnostics Inc.; December 2016. **2.** Schneider M. Characteristics of SonoVue. *Echocardiography*. 1999;16(7, pt 2):743-746. **3.** Schneider M, Arditi M, Barrau MB, et al. BR1: A new ultrasonographic contrast agent based on sulfur hexafluoride-filled microbubbles. *Invest Radiol*. 1995;30(8):451-457. **4.** Data on file. Bracco Diagnostics Inc.

### INDICATIONS AND USAGE<sup>1</sup>

LUMASON is an ultrasound contrast agent indicated for use:

- in echocardiography to opacify the left ventricular chamber and to improve the delineation of the left ventricular endocardial border in adult patients with suboptimal echocardiograms
- in ultrasonography of the liver for characterization of focal liver lesions in adult and pediatric patients
- in ultrasonography of the urinary tract for the evaluation of suspected or known vesicoureteral reflux in pediatric patients

### CONTRAINDICATIONS<sup>1</sup>

LUMASON is contraindicated in patients with:

- history of hypersensitivity reactions to sulfur hexafluoride lipid microsphere components or to any of the inactive ingredients in LUMASON

### IMPORTANT SAFETY INFORMATION<sup>1</sup>

#### WARNING: SERIOUS CARDIOPULMONARY REACTIONS

**Serious cardiopulmonary reactions, including fatalities, have occurred uncommonly during or following the injection of ultrasound contrast agents, including sulfur hexafluoride lipid microspheres [see Warnings and Precautions (5.1)]. Most serious reactions occur within 30 minutes of administration [see Warnings and Precautions (5.1)].**

- **Assess all patients for the presence of any condition that precludes administration [see Contraindications (4)].**
- **Always have resuscitation equipment and trained personnel readily available [see Warnings and Precautions (5.1)].**

The risk for serious cardiopulmonary reactions may be increased among patients with unstable cardiopulmonary conditions (acute myocardial infarction, acute coronary artery syndromes, worsening or unstable congestive heart failure, or serious ventricular arrhythmias) [see Warnings and Precautions (5.1)].<sup>1</sup>

Please see full Prescribing Information including boxed **WARNING** at <http://www.braccoimaging.com/us-en/products-and-solutions/contrast-enhanced-ultrasound/lumason/prescribing-information>

**You are encouraged to report negative side effects of prescription drugs to the FDA. Visit [www.fda.gov/medwatch](http://www.fda.gov/medwatch) or call 1-800-FDA-1088.**

LUMASON is manufactured for Bracco Diagnostics Inc., Monroe Township, NJ 08831 by Bracco Suisse S.A., Plan-les-Quates Geneve, Switzerland (LUMASON lyophilized powder vial-25 mg lipid-type A/60.7 sulfur hexafluoride gas); Vetter Pharma-Fertigung GmbH & Co. KG, 88212 Ravensburg, Germany (Sodium Chloride 0.9% Injection, USP); B. Braun Melsungen AG, 34212 Melsungen, Germany (Mini-Spike).

LUMASON is a registered trademark of Bracco Diagnostics Inc. SonoVue is a registered trademark of Bracco Suisse S.A.

Bracco Diagnostics Inc.  
259 Prospect Plains Road, Building H  
Monroe Township, NJ 08831 USA  
Phone: 609-514-2200  
Toll Free: 1-877-272-2269 (U.S. only)  
Fax: 609-514-2446

©2017 Bracco Diagnostics Inc. All Rights Reserved.  
16-030116A-U

