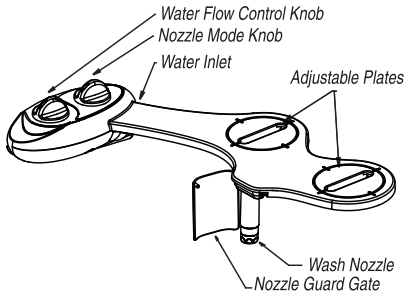


INTRODUCING THE SUPER EASY **tushy** ASSEMBLY INSTRUCTIONS!

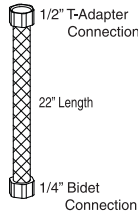
NAMES AND FUNCTIONS OF PARTS

*Please note: illustrations may vary depending on the model

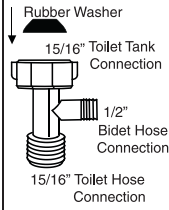


PARTS

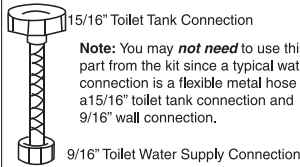
Flexible Metal Braided Hose



Plastic T-Adapter

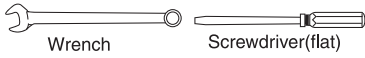


Flexible Water Supply Hose



Note: You may *not need* to use this part from the kit since a typical water connection is a flexible metal hose with a 15/16" toilet tank connection and 9/16" wall connection.

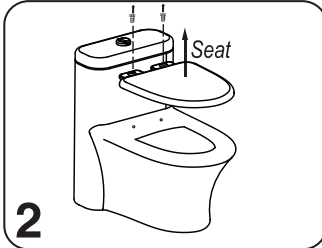
Installation Tools You May Need



Wrench

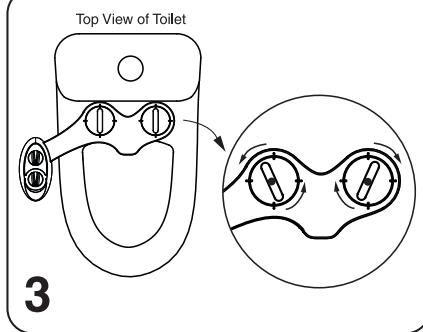
Screwdriver(flat)

1 Shut off the toilet water supply. Flush toilet to empty the tank.



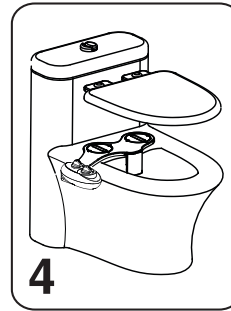
2

Remove the seat by unscrewing the seat.



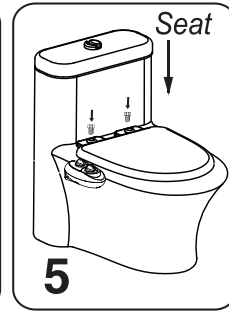
3

Place the bidet on the toilet. Plates may be adjusted depending on where the two holes in the back of the toilet are.



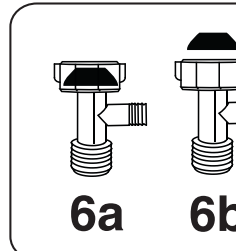
4

Bidet should now be aligned with the coupling holes.



5

Screw the seat back on to the bidet and the toilet.



6a

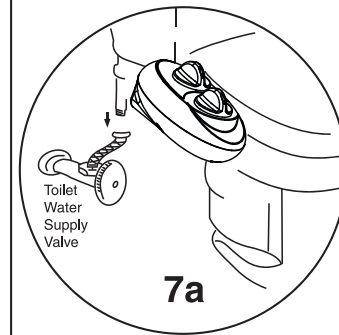
6b

6a: Make sure that the black rubber washer is inserted at the top of the t-adapter.
6b: If it is not already there, insert it as shown in figure 6a.

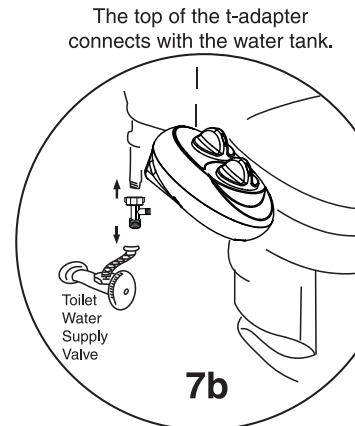
7 Connecting Water Supply

7a: Make sure you have shut off the toilet water supply and flushed the toilet to empty the tank.

7b: Connect the plastic T-adapter to the water supply as shown in figure 7b.



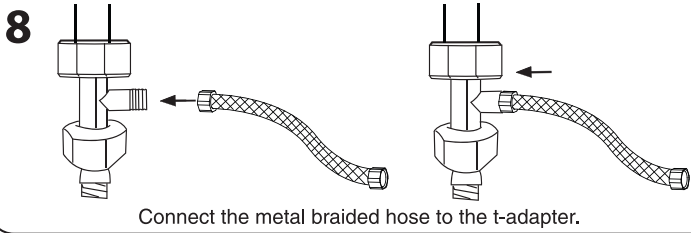
7a



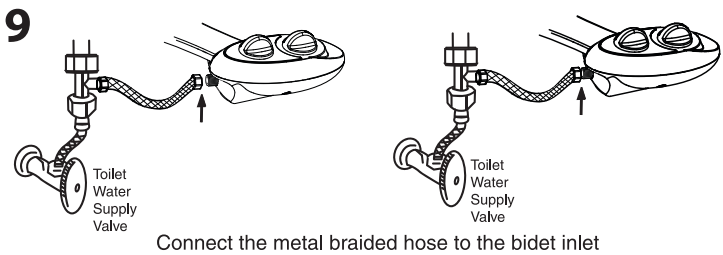
7b

Tip: Do not use excessive force while tightening the connection. Hand tighten then use a wrench to gently tighten one quarter or half-turn more.

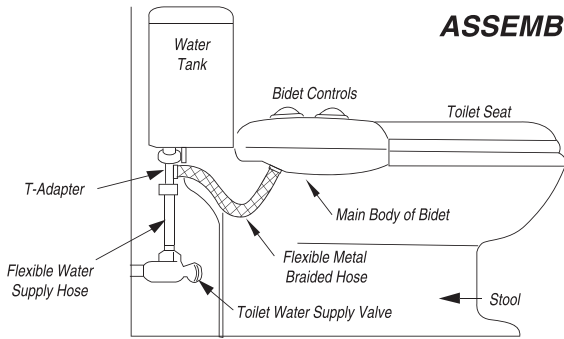
LOOK! MORE SUPER EASY **tushy** ASSEMBLY INSTRUCTIONS!



8 Connect the metal braided hose to the t-adapter.



9 Connect the metal braided hose to the bidet inlet



ASSEMBLED UNIT

TRYING YOUR tushy FOR THE FIRST TIME

Congratulations! You are ready to use **tushy** for the first time. Gently turn the water pressure control knob to reach your desired spray pressure. The control only regulates water pressure, not the duration of the spray.

The working pressure of this product is 50±20 psi

TROUBLESHOOTING

After installing the bidet, the toilet seat sits at an angle and no longer rests on the toilet bowl.
Apply adhesive rubber bumpers to the bottom of the seat to eliminate the gap.

When the bidet is on, no water comes out of the spray nozzle.

Solution 1: Gently pump the nozzle up and down by hand. It may simply be stuck.
Solution 2: Check that the t-adapter has been drilled all the way through so water can flow through it. If the t-adapter is blocked, please contact us for a replacement.

Water angle is shifted to the side

Try to rotate the bidet clockwise or counterclockwise just a few degrees by pushing the panel to the back or pulling the panel to the front. It may be that the bidet is not installed completely straight.

The water is going straight down into the toilet and is not coming up as spray.

The nozzle cap, that screws at the end of the nozzle, may have fallen off into the toilet. The replacement of the nozzle cap can be purchased from our website. It is easily screwed on at the bottom of the nozzle.

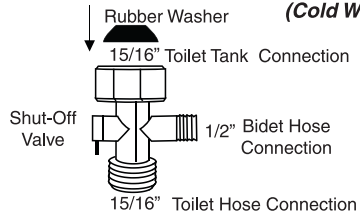
Water is leaking from a connection

Solution 1: Try reconnecting the t-adapter to ensure that all threads are catching properly and that the connection is properly tightened.
Solution 2: If you have difficulty properly tightening the t-adapter to your toilet tank connection, try wrapping a thin layer of plumbing tape over the toilet tank threads before connecting the t-adapter. The plumbing tape will allow for added grip.
Solution 3: If you continue to experience a drip from the t-adapter or any other connection, please contact us.

OPTIONAL ACCESSORY

Available for Purchase at www.LuxeBidet.com/accessories

Metal T-Adapter with Shut-Off Valve (Cold Water)



This metal t-adapter has a shut-off valve to limit or cut off cold water to the bidet. It can be used instead of the plastic t-adapter for the cold water connection.

©2Go Products, LLC

Printed for Tushy