

LESS Fat Muscle MORE

Watch Video

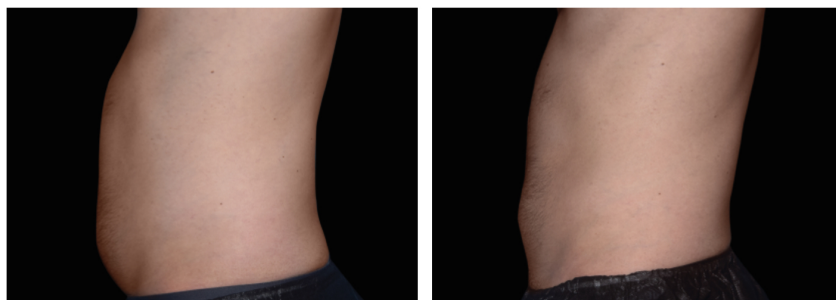
More Bang For Your Buck

Two therapies in a single treatment.
Click on the desired body area to view the results.



BEFORE

AFTER



60% of women and 90% of men are interested in one or both a fat reduction and muscle toning treatment.

EMSCULPT NEO is the first and only non-invasive body shaping procedure that provides simultaneous fat elimination and muscle building in a combined 30-minute session.



FIND A PROVIDER



What is EMSculpt NEO

EMSCULPT NEO builds off the legacy of its predecessor, EMSculpt, by simultaneously emitting both radio frequency and high intensity electromagnetic energies.

The end result is more fat reduction and muscle growth, than any single gold standard product, for less time and less money.

Best of all, EMSculpt NEO has broad appeal as it can treat patients up to BMI 35!

How Does EMSculpt NEO Work?

EMSCULPT NEO is based on an applicator simultaneously emitting synchronized RF and HIFEM+ energies.

Due to the radiofrequency heating, the muscle temperature quickly raises by several degrees. This prepares muscles for exposure to stress, similar to what a warm up activity does before any workout. In less than 4 minutes, the temperature in subcutaneous fat reaches levels that cause apoptosis, i.e. fat cells are permanently damaged and slowly removed from the body. Clinical studies showed on average a 30% reduction in subcutaneous fat.*

Bypassing the brain limitations, HIFEM+ energy contracts the muscle fibers in the area at intensities that are not achievable during voluntary workout. Extreme stress forces the muscle to adapt resulting in an increase in the number and growth of muscle fibers and cells. Clinical studies* showed on average a 25% growth in muscle volume.



Two Therapies in a Single Treatment



7 New Clinical Studies

Using the most reputable scientific methods, EMSculpt NEO showed consistency

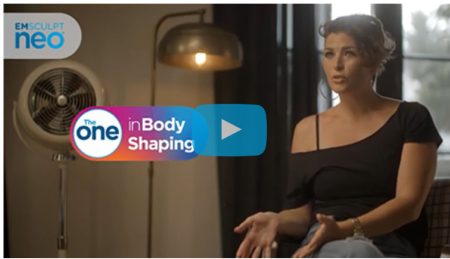
in eliminating fat and building muscle. The data shown represents the average results of 3 EMSculpt Neo's clinical studies.* Results and patient experience may vary.

+3% **-4%**

More Muscle*
On Average

Less Fat*
On Average

My EMSculpt Neo Experience



Frequently Asked Questions

- + ▶ **Why is EMSculpt Neo the ONE in body shaping?**
- + ▶ **Can I lose fat and build muscle at the same time?**
- + ▶ **What areas can be treated with EMSculpt Neo?**
- + ▶ **Does EMSculpt Neo really work?**
- + ▶ **What does EMSculpt Neo therapy feel like?**

Show More

Workout Smarter Not Harder

Non-essential fat provides greater resistance to athletic motion thereby forcing one to increase the muscle force of contractions per given workout. This takes time, energy and a lot of patience, unless one discovers EMSculpt Neo.

FIND A PROVIDER



Solutions

Media

Events

Contact

About

The SYS Tour

US FDA clearances:

Emsculpt Neo® is intended for non-invasive lipolysis (breakdown of fat) of the abdomen and reduction in circumference of the abdomen with Skin Type I to Skin Type III. Emsculpt Neo is also cleared for improvement of abdominal tone, strengthening of the abdominal muscles and development of firmer abdomen. Strengthening, toning, firming of buttocks, thighs, and calves. Improvement of muscle tone and firmness, for strengthening muscles in arms.

Emsculpt® is intended for improvement of abdominal tone, strengthening of the abdominal muscles, development of firmer abdomen. Strengthening, toning and firming of buttocks, thighs, and calves. Improvement of muscle tone and firmness, for strengthening muscles in arms.

Emtone™ is intended to provide heating for the purpose of elevating tissue temperature for selected medical conditions such as temporary relief of pain, muscle spasms, and increase in local circulation. EMTONE massage device is intended to provide a temporary reduction in the appearance of cellulite.

Exilis Ultra 360™ is intended for use in non-invasive dermatologic and general surgical procedures for non-invasive treatment of wrinkles and rhytids, to provide a temporary

reduction in the appearance of cellulite, and to provide heating for the purpose of elevating tissue temperature for selected medical conditions such as temporary relief of pain and increase in local circulation.

BTL Emsella® is intended to provide entirely non-invasive electromagnetic stimulation of pelvic floor musculature for the purpose of rehabilitation of weak pelvic muscles and restoration of neuromuscular control for the treatment of male and female urinary incontinence.

BTL Vanquish ME™ is indicated for temporary reduction in the circumference of the abdomen and thighs.

BTL®, EMSCULPT NEO®, EMSCULPT®, Emsella®, Exilis®, HIFEM®, Vanquish® are registered trademarks in the United States of America, the European Union and/or other countries. Trademarks EMSCULPT NEO®, EMSCULPT®, Emsella®, EMTONE™, EM™ and HIFEM® are parts of EM Family of products.

* Data on file

**** Results and patient experience may vary.**

As with any medical procedure, ask your doctor if the procedure is right for you. Patient names have been changed for their privacy.

These products, the methods of manufacture or the use may be subject to one or more U.S. or foreign patents or pending applications. For more information [click here](#).

© 2021 BTL INDUSTRIES Inc. | info@btlnet.com | [Terms of use](#) | [Privacy Statement](#) | [GDPR](#) | [EUA](#)