



COLOCATION AT THE KINETIC EDGE

The third act of the internet is written by low-latency services running at the edge of the network
Vapor IO offers a new kind of colocation, powered by the Kinetic Edge. We

Get Started



SIMPLE EDGE COLOCATION

Vapor IO's Kinetic Edge data centers are high-performance climate-controlled facilities which support standard 19" server and network infrastructure equipment. No equipment hardening or special form factors are required, making it easy to expand to the edge without the hassle.

The Kinetic Edge colocation platform uses custom software and the Kinetic Edge Fabric to combine multiple micro data centers into a single virtual data center. For developers and operators, it presents a unique geographically-dispersed collection of micro data centers as if they were within a single facility, offering multiple distributed, networked availability zones.



KINETIC EDGE

City Scale Data Centers

Every Kinetic Edge city has multiple micro data centers arranged in a ring and spaced at 10-20 Kilometer increments. These Kinetic Edge nodes are then meshed together with high-speed fiber for load balancing, resilience and workload migration. By employing the Kinetic Edge's SDN-based Kinetic Edge Fabric, tenants can create VLANs that span multiple Vapor IO and third party sites to create city-sized virtual data centers spanning diverse availability zones.

Remotely Operable

Designed for autonomous lights out operation, each Kinetic Edge data center processes thousands of real-time data points to evaluate on-the-ground conditions. Vapor IO's control center aggregates environmental data for global monitoring, troubleshooting and situational awareness. Vapor IO's open source Synse telemetry system provides tenants with an API to access Kinetic Edge data streams as well as data from their installed IT equipment if desired.

Highly Redundant

By using software-driven failover and workload migration, Kinetic Edge tenants can achieve up to 12 nines of reliability by distributing risk across availability zones. By picking several strategic locations and using software resiliency, Kinetic Edge tenants can exceed the reliability of even the most modern Tier 4 data center. Leveraging the Kinetic Edge API, developers can build edge native applications that respond to changing environmental conditions in order to optimize resiliency and respond to real world events, maintaining their performance and service uptime.

Seriously Secure

Each Kinetic Edge data center has multiple redundant layers of security, providing both physical and logical separation of tenants in the same facility. Vapor IO's security system integrates with the most popular forms of corporate authentication, giving customers the ability to control access using their existing enterprise authorization systems. 24/7 remotely monitored security systems provide asset protection that

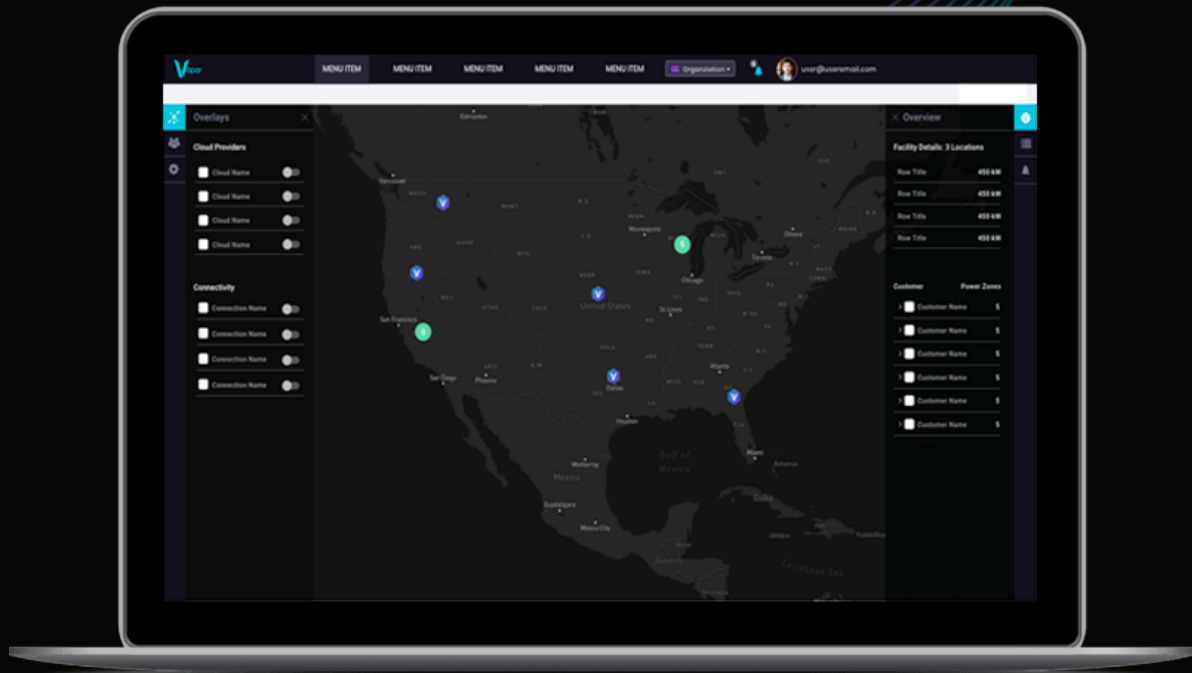
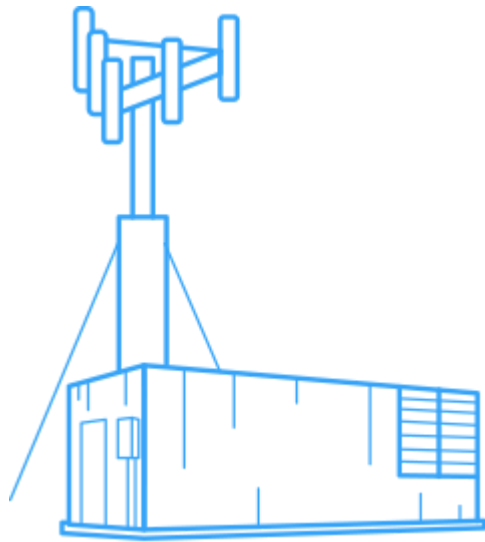
meets or exceeds that of traditional manned data centers and the distributed nature of Kinetic Edge nodes also means it's easier to isolate and quarantine attacks.

THE EDGE IS A NETWORK PROBLEM

At its inception, the internet relied on a few centralized points to operate. As it developed, the internet spread further outwards, into regional facilities and CDNs. Now, these two acts have brought us to the third act of the internet, where the challenges we face now need the edge.

New devices, networks and applications such as autonomous vehicles, city-scale IoT and new generations of intelligent content delivery need dense edge data center colocation resources to support their low-latency performance requirements, as well as their cost and flexibility needs. Bringing compute, storage and network resources to the edge solves for data gravity, as more and more data is generated and digested at the network edge, closer than ever to its users.

But edge colocation alone isn't enough. The edge is a network problem, requiring an entirely new approach to internet infrastructure. That's why Vapor IO's Kinetic Edge also incorporates unique SDN-based edge exchange and edge networking technologies, eliminating unnecessary latency between user and application to create the next generation of internet infrastructure.



MANAGE & MONITOR



VAPOR EDGE PORTAL

Control and monitor your deployments at the Kinetic Edge with Vapor IO's web-based portal, which gives you everything you need to plan, manage and oversee your presence at the Kinetic Edge no matter the scale. Check equipment status, configure your network, file trouble tickets, and even schedule maintenance windows. This is your all-in-one tool for operating at the edge.



REMOTE HANDS

Use our Remote Hands service to send skilled personnel to any of our Kinetic Edge locations. Our technicians will perform remote work at your direction, whether it's hand rebooting a machine or swapping out a server.



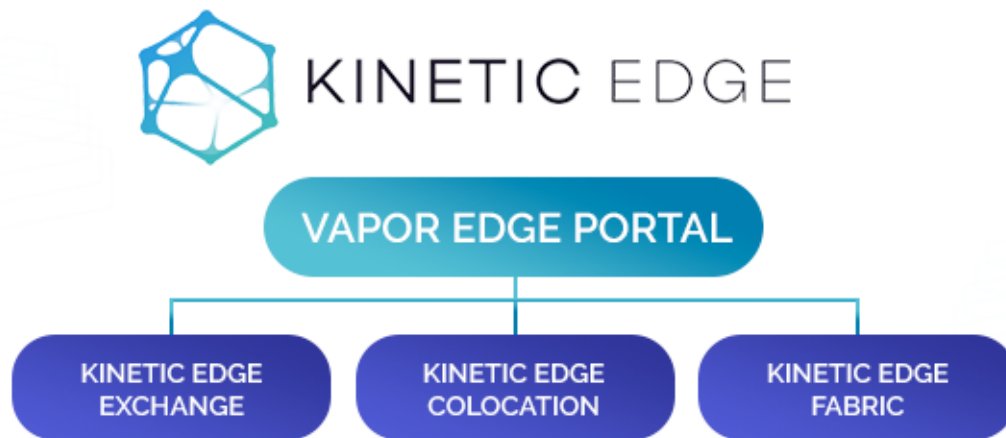
APIs

Monitor and control your equipment and its environment with our APIs. Build automated operational tools to troubleshoot and respond to real-time conditions. Integrate with tools such as Slack and PagerDuty to send alerts that flag irregularities to your team for analysis and response.

SOLVING FOR THE EDGE

The Kinetic Edge is the only solution truly solving for the edge. Vapor IO's advanced proprietary technologies for edge exchange, edge colocation and edge networking allow the Kinetic Edge to support applications and users that are impossible to satisfy today, with its full-coverage solution for the edge. Solving for the edge is a network problem, and the Kinetic Edge is the solution.

Each element of the Kinetic Edge is purpose-built for the challenges we face in creating the next tier of local internet infrastructure to make the third act of the internet a reality. This is an internet that's local in scope but global in impact, bringing applications, resources and networks as close as possible to their users, moving the internet beyond its regional presence to create the future.



REQUEST MORE INFORMATION

Name

Email Address

Position

Company

Location

Message

SUBMIT



PRODUCTS

Kinetic Edge
Exchange

INDUSTRY SOLUTIONS

CDN & Cloud
Providers

TECHNOLOGY

Kinetic Edge

COMPANY

About
Careers

© 2020 Vapor IO. All rights reserved.

Kinetic Edge	Application	Vapor	Legal
Colocation	Developers	Chamber	Contact
Kinetic Edge	Land Owners	Vapor Edge	Us
Fabric	Network	Module	
	Operators	Synse	
	5G		
	The Kinetic		
	Edge Alliance		
	AWS at the		
	Kinetic Edge		
	Digital Realty		
	Partnership		

