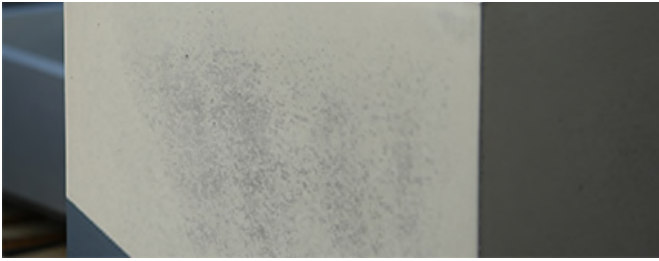




Aspect Series





KORNEGAY DESIGN

A Landscape Forms Company



All rights reserved 2019



Four sided cast concrete landscape container with minimal, architectural style and simple shadow line at base.

Options

To Specify

Select the ASP product number along with the option below.

Drainage

- Standard diameter hole: approximately 2-3/8"
- Custom size to function with irrigation & drainage (note size of plumbing fixture to be used)

Concrete Color

- Natural gray concrete
- Choose integral pigment color from DAVIS COLORS, call/email us for a Davis Colors selector brochure
- Custom color mixing available

Finishing

- Bituminous sealer (suggested for interior applications)
- Sandblast finish

Notes

- CONTACT US for CSI specifications
- CONTACT US for CAD Drawings
- CONTACT US for 3D SketchUp Models
- Upcharges will apply for colors, sandblasting, sealer, and extra drain holes

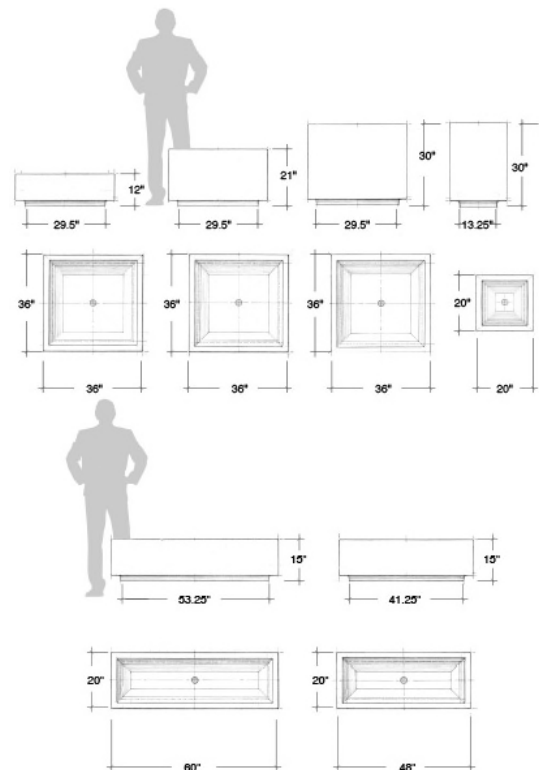
In 2018, Larry Kornegay designed the Aspect Series exclusively for Kornegay Design[®], a Landscape Forms[®] company.

Specifications

ASP-60:	15" tall	60"	53.25"	800 lb.
		dia.	base	
ASP-48:	15" tall	48"	41.25"	615 lb.
		dia.	base	
ASP-12:	12"	36"	29.5"	650 lb.
	tall	dia.	base	
ASP-21:	21"	36"	29.5"	940 lb.
	tall	dia.	base	
ASP-30:	30"	36"	29.5"	1240 lb.
	tall	dia.	base	
ASP-20:	30"	20"	13.25"	530 lb.
	tall	dia.	base	

All weights are approximate

Drawings



Downloads



Aspect Series Complete Package