



Paint



Roof & Wheels



Interior

**60**  
60 kWh Battery

- 208 miles range (EPA)
- 215 miles range at 65 mph
- 380 hp motor power
- 5.9 seconds 0-60 mph
- 120 mph top speed
- 8 year, 125,000 mile battery and drive unit warranty
- Supercharging optional

**85**  
85 kWh Battery

- 265 miles range (EPA)
- 285 miles range at 65 mph
- 380 hp motor power
- 5.4 seconds 0-60 mph
- 140 mph top speed
- 8 year, infinite mile battery and drive unit warranty
- Supercharging included

**P85D**  
85 kWh Performance

- 285 miles range at 65 mph
- 691 hp motor power
- 221 hp front, 470 hp rear
- 3.2 seconds 0-60 mph
- 155 mph top speed
- High performance Dual Motor all wheel drive with specially designed suspension for exceptional power and handling
- 8 year, infinite mile battery and drive unit warranty

March Delivery [ORDER](#)

Lease  Loan  Cash

**\$777 /mo.**  
12,000 miles /year | 15,000 miles /year  
Estimated Lease Payment

---

**\$568 /mo.**  
Including Gasoline Savings

3 year lease, \$6,477 due at signing  
Eligible For \$2,500 California EV Incentive

[Show selected options](#)

including Gasoline Savings

3 year lease, \$6,477 due at signing  
Eligible For \$2,500 California EV Incentive

[Show selected options](#)

Print spec sheet

Drive

Rear Wheel Drive

including Gasoline Savings

3 year lease, \$6,477 due at signing  
Eligible For \$2,500 California EV Incentive

[Show selected options](#)

Print spec sheet

Model S Performance

### Carbon Fiber Spoiler

Improve high speed stability by adding the carbon fiber spoiler to your trunk lid. Made from lightweight, cross-woven carbon fibers with a matte epoxy finish.



Requires P85D

Including Gasoline Savings

3 year lease, \$6,477 due at signing  
Eligible For \$2,500 California EV Incentive

[Show selected options](#)

Print spec sheet

### Tesla Red Brake Calipers

Tesla Red four piston Brembo brake calipers.



Requires P85D

Including Gasoline Savings

3 year lease, \$6,477 due at signing  
Eligible For \$2,500 California EV Incentive

[Show selected options](#)

Print spec sheet

## Charging

Model S comes with the necessary equipment to charge at home or on the road. Charge at up to 29 miles per hour (40 amps).

- Onboard charger
- Mobile connector
- Standard household outlet adapter
- 240-volt adapter
- J1772 public charging station adapter

Including Gasoline Savings

3 year lease, \$6,477 due at signing  
Eligible For \$2,500 California EV Incentive

[Show selected options](#)

Print spec sheet

### Supercharger Enabled

Tesla Superchargers are external chargers designed to replenish half of a charge in as little as 20 minutes. When enabled, there is no charge to use a Supercharger. This allows you to drive for free from coast to coast or anywhere our growing network of Superchargers will take you.



Included with the 85 kWh battery  
\$2,500 after delivery

Including Gasoline Savings

3 year lease, \$6,477 due at signing  
Eligible For \$2,500 California EV Incentive

[Show selected options](#)

Print spec sheet

### Dual Chargers

Outfit Model S with a second onboard charger for up to twice the standard rate of charge, up to 58 miles of range per hour of charge, when combined with an 80 amp Wall Connector.



\$3,600 after delivery

Including Gasoline Savings

3 year lease, \$6,477 due at signing  
Eligible For \$2,500 California EV Incentive

[Show selected options](#)

Print spec sheet

### Wall Connector

Designed to mimic the fluid, futuristic design of Model S, the Wall Connector is the fastest, easiest way to charge at home. The Wall Connector does not require Dual Chargers, but it will not reach its maximum 80 amp charging capability without them.



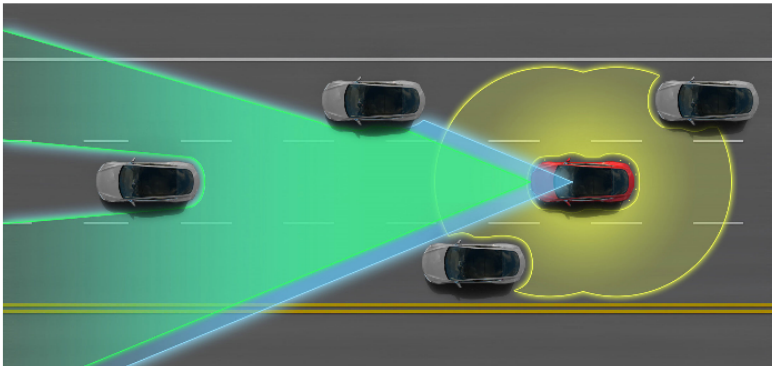
Including Gasoline Savings

3 year lease, \$6,477 due at signing  
Eligible For \$2,500 California EV Incentive

[Show selected options](#)

Print spec sheet

## Autopilot



Model S comes standard with a forward looking camera, radar, and 360-degree ultrasonic sensors that actively monitor the surrounding roadway. Progressive software updates over time will enable sophisticated safety and convenience features that use these sensors to respond to real world conditions. Safety features include systems that warn drivers of potential hazards and help avoid or lessen the impacts of collisions. Convenience features include everyday driving maneuvers that reduce driver workload, such as traffic aware cruise control and automatic parking.

Safety features, today and in the future, are included in every Model S with Autopilot hardware. Convenience features will be included in the Tech Package. It will take several months for all the features to be completed and uploaded to the cars.

## Options

### Tech Package with Autopilot

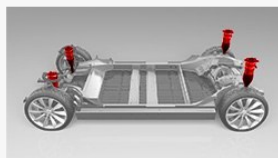
The Tech Package adds a host of features to an already advanced car.

- Autopilot convenience features available through software updates
- Onboard maps and navigation for North America with free updates for 7 years
- LED running lights, cornering lights, and fog lamps
- Automatic keyless entry
- Lighted door handles
- Power liftgate
- Electrochromatic mirrors
- Power folding, heated side mirrors
- GPS enabled Homelink
- Memory seats, mirrors, and driver profile



### Smart Air Suspension

Automatically adjusts stiffness for optimum performance and ride regardless of road surface or cargo. Location aware, the air suspension automatically re-applies manual settings each time it nears previous GPS coordinates, particularly useful for steep driveways.



Requires Tech Package

Including Gasoline Savings

3 year lease, \$6,477 due at signing  
Eligible For \$2,500 California EV Incentive

[Show selected options](#)

Print spec sheet

Including Gasoline Savings

3 year lease, \$6,477 due at signing  
Eligible For \$2,500 California EV Incentive

[Show selected options](#)

Print spec sheet

Including Gasoline Savings

3 year lease, \$6,477 due at signing  
Eligible For \$2,500 California EV Incentive

[Show selected options](#)

Print spec sheet

Including Gasoline Savings

3 year lease, \$6,477 due at signing  
Eligible For \$2,500 California EV Incentive

[Show selected options](#)

Print spec sheet

Including Gasoline Savings

3 year lease, \$6,477 due at signing  
Eligible For \$2,500 California EV Incentive

[Show selected options](#)

Print spec sheet

Including Gasoline Savings

3 year lease, \$6,477 due at signing  
Eligible For \$2,500 California EV Incentive

[Show selected options](#)

### Premium Interior Package

Enhance the interior of Model S with LED accent lighting, décor-matched yacht floor under the center console tray, and extended Nappa leather surfaces. Selectively chosen top-grade hides are minimally processed to retain their natural character, covering the armrests, driver's airbag cover, and lower dashboard.

- Interior accent lighting
- Décor-matched yacht floor
- Extended Nappa leather trim



Requires leather seats

Print spec sheet

Including Gasoline Savings

3 year lease, \$6,477 due at signing  
Eligible For \$2,500 California EV Incentive

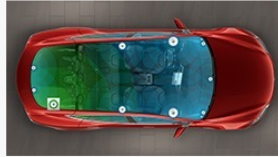
[Show selected options](#)

Print spec sheet

### Ultra High Fidelity Sound

Ultra High Fidelity Sound envelops passengers in a concert hall like environment that uses 12 precisely positioned speakers to accurately reproduce sound and deliver it directly to passengers' ears. Its digital signal processing was developed with well known record producers and is precisely tuned for the speakers' placement inside the car. Our sound engineers even accounted for acoustic differences in the roof material by creating a different signal processing codec for standard and all glass panoramic roofs. The package includes:

- XM Satellite radio capability
- 12 speakers with neodymium magnets including an 8" subwoofer



Including Gasoline Savings

3 year lease, \$6,477 due at signing  
Eligible For \$2,500 California EV Incentive

[Show selected options](#)

Print spec sheet

### Subzero Weather Package

Improve cold-weather comfort and convenience by adding:

- 3 zone rear seat heaters
- Wiper blade defrosters
- Washer nozzle heaters



Recommended for climates where temperatures regularly fall well below freezing

Print spec sheet

Including Gasoline Savings

3 year lease, \$6,477 due at signing  
Eligible For \$2,500 California EV Incentive

[Show selected options](#)

Print spec sheet

### 19" Winter Tire Set

Four standard 19" wheels with mounted Pirelli Winter Sottozero winter tires, size 245/45-19.



Includes wheels and tires

Including Gasoline Savings

3 year lease, \$6,477 due at signing  
Eligible For \$2,500 California EV Incentive

[Show selected options](#)

Print spec sheet

### 21" Winter Tire Set

Four 21" wheels with mounted Pirelli Winter Sottozero winter tires, size 245/35-21. Winter wheels will be matched to your Model S.



Including Gasoline Savings

3 year lease, \$6,477 due at signing  
Eligible For \$2,500 California EV Incentive

Includes wheels and tires

[Show selected options](#)

### Rear Facing Seats

Carry up to 7 passengers in Model S by adding seating for two children with rear facing seats. Engineered to far exceed federal safety standards, they attach to a second frame that augments our standard bumper with high strength aluminum for the utmost protection. These comfortable seats are hand wrapped in black microfiber and synthetic leather and fold completely flat into the floor when not in use.




Must be factory installed

 Print spec sheet

including Gasoline Savings

3 year lease, \$6,477 due at signing  
Eligible For \$2,500 California EV Incentive

[Show selected options](#)

 Print spec sheet

### Electric Vehicle Incentives

Depending on where you reside, you may be eligible for state sponsored tax incentives and rebates. These incentive programs vary by state and are offered and administered by government agencies. The requirements for eligibility and availability of the incentives are outside of Tesla's control. Click here for additional information and be sure to visit the state program's website for important details on eligibility and availability.

### Tesla Lending

Monthly payments are calculated assuming an annual percentage rate (APR) of 3.00% for a term of 72 months with a 10% down payment.

Lending approval is based on your credit and program guidelines. Changes in term or down payment may change the annual percentage rate and are subject to change without notice. We have excluded sales tax, registration fees, and loan fees from the above calculator because they vary from state to state and in some cases, town to town. Lending is currently only available in the following states: CA, CO, FL, IL, MA, MN, MO, NC, NV, NY, OH, OR and WA. If you live outside of these states, contact us for alternate lending options.

Loans are offered through U.S. Bank and Wells Fargo. Neither U.S. Bank nor Wells Fargo is associated with the Guaranteed Resale Value. Some loans with low down payments will not have a Guaranteed Resale Value that exceeds the loan principal at month 36, but will before month 39. Learn more about [Guaranteed Resale Value](#).

### Tesla Leasing

The amount due at signing includes the first month's payment (as shown above), downpayment of \$5,000 and acquisition fee of \$700. Tax, title, license, registration and other fees are additional fees that are due at signing. The monthly lease payment is calculated based on the cash price of the vehicle as configured, monthly lease payments for 36 months, a \$5,000 down payment and either 12,000 or 15,000 miles allowed per year (as selected above). Payments do not include applicable taxes. A \$300 disposition fee is due at lease end. No security deposit is required. Tesla leasing is available in AL, AK, AR, AZ, CA, CO, CT, DC, FL, HI, ID, IL, IN, KS, MA, MD, ME, MN, MO, MT, NC, ND, NM, NV, NY, OH, OR, PA, SC, SD, TN, TX, UT, VA, VT, WA, WV and WY. Subject to credit approval; not everyone will qualify.

### Gasoline Savings

Gasoline savings assume an average driving distance of 15,000 miles per year, paying \$0.11 per kilowatt hour for electricity, and paying \$4.90 per gallon for premium gasoline with a fuel efficiency of 20 miles per gallon.

Price does not include taxes, license and title fees, or regionally required equipment, service, and charges.

21-inch wheels are equipped with low-profile performance tires that provide less protection from, and are consequently more likely to suffer damage from, uneven road surfaces, debris, curbs, and other common obstacles. Damage to wheels or tires from these conditions are not covered under the Model S new vehicle limited warranty. 21-inch wheels with low-profile performance tires wear faster and reduce battery range compared to 19-inch wheels with all season tires. For best results, follow recommended tire maintenance including tire rotation. Model S does not come with a spare wheel and tire.

Low-profile performance tires are meant for summer use and will not have adequate traction in cold, snowy or icy conditions. We recommend driving on winter tires, available on both 21-inch and 19-inch wheels, in winter weather.

Rear Facing Seats are child restraint systems intended for children at least 3' 1" tall and between 35 and 77 pounds. Children should be seated upright without their head touching the roof of the car and be properly belted in at all times. It's important that you follow all provided instructions to ensure the safety of your passengers.

Performance characteristics are estimated or determined by Tesla Motors, Inc. under certain driving, operating, and environmental conditions. Actual results will vary based on your driving habits and other factors.

including Gasoline Savings

3 year lease, \$6,477 due at signing  
Eligible For \$2,500 California EV Incentive

[Show selected options](#)

 Print spec sheet

**MODEL S**  
**MODEL X**  
**ROADSTER**

**SUPERCHARGER**  
Supercharger  
Battery Swap

**ENTHUSIASTS**  
Blog  
Customer Stories  
Photos & Videos  
Events  
Forums

**FIND US**  
Stores  
Service Centers  
Charging  
Contact

**BUY**  
Order Your Tesla  
What To Expect  
Incentives  
Financing  
Service Plans  
Pre-Owned Roadster  
Accessories


**ABOUT TESLA**  
Executives  
Press  
Careers  
Investors  
Suppliers



Copyright © 2014 Tesla Motors, Inc. All rights reserved.

[Legal & Privacy](#)

[First Responders](#)

 [Choose Region](#)

**MY TESLA** | [Contact](#) | [Sign In](#)