

## cataCXium POMeTB

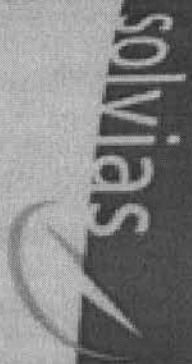
SOL20758-8

MW 317.41

C<sub>19</sub>H<sub>28</sub>NO<sub>P</sub>

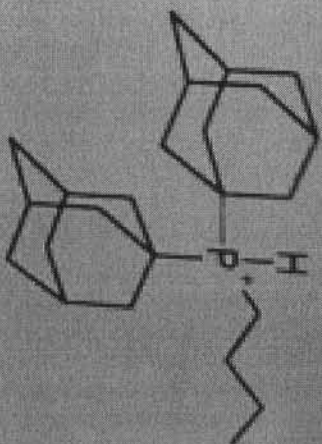
TMD : 365 g

Caution, not fully tested compound / For lab use only / Avoid contact with skin and eyes



fill date 13.04.2010

Solvias AG, P.O. Box,  
4002 Basel, Switzerland



**cataCXium AHI**

**SOL20746-4**

**MW 486.46**

**C<sub>24</sub>H<sub>38</sub>P<sub>2</sub>Hl**

**TMD : 575 g**

Caution, not fully tested compound / For  
use only / Avoid contact with skin and eyes