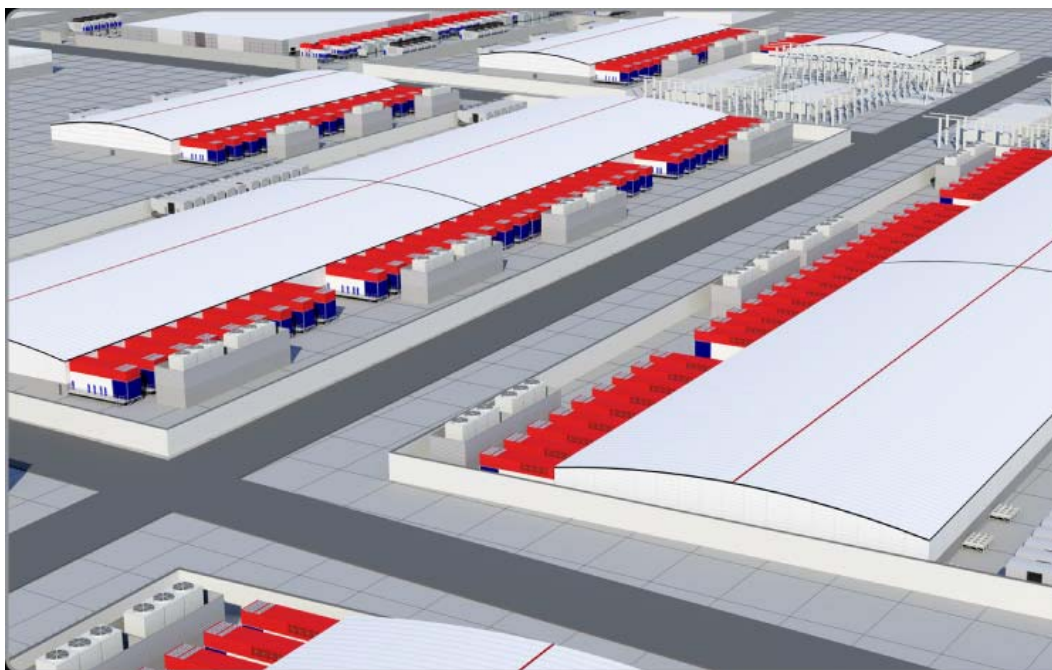


The Las Vegas SuperNAPs

The World's Most Powerful Data Center Ecosystem

SUPER|NAP Campus Stats

The Switch Western United States Data Center Campus - Over 2,000,000 Sq. Ft.



- 2,200,000 square feet of Data Center space
- 500 MVA of power capacity
- 567 MVA of generator capacity
- 294 MVA of UPS (Uninterruptible Power Supply)
- 202,000 tons of cooling
- 22,000,000 CFM (cubic feet per minute) of airflow
- Over 31,000 cabinets
- 24/7/365 on-site security, safety, operations, and critical infrastructure personnel
- 500,000 square feet of additional on-net office space

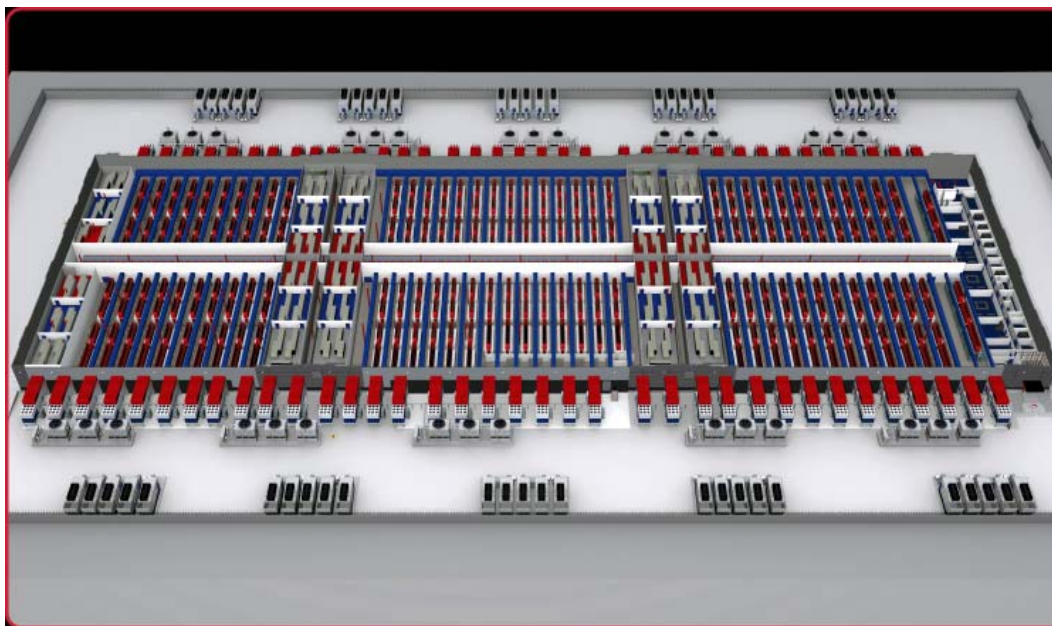
Revolutionary Space, Power & Cooling

Most data centers today are faced with severe issues resulting from improper management and control of equipment-generated heat. Switch offers the most forward looking designs for space and power in the industry. Our Tier Elite facilities are designed to our Switch WDMD™ (Wattage Density Modular Design) standards to deliver complete isolation and control over the heat that your equipment produces. Switch has created the t-scif™ (Thermal Separate Compartment in Facility) for the purpose of completely separating the hot and cold aisles, ensuring that the hot equipment exhaust is never blended into the cold aisles in the data center. Your company can operate and grow inside a t-scif™ for years without ever being threatened by the high temperatures that are rendering many of America's data center facilities inoperable.

Due to the newest power grid in the U.S and Nevada's low population there are no large population power congestion areas to worry about. All of our power is delivered in a true System + System configuration, so each primary and failover system is completely separate from each other and each is able to run 100% of the needed power for the centers.

Do you expect your space needs to increase? We will grow with you. Switch is currently accepting clients at SuperNAP 7, and SuperNAP 8 is under construction. In addition Switch has the land to build over 1 million additional square feet of data center space over the next several years. All of these facilities are connected to each other via redundant fiber paths to our billion dollar fiber hub so that we can easily accommodate your company's network and connectivity growth plans for decades to come.

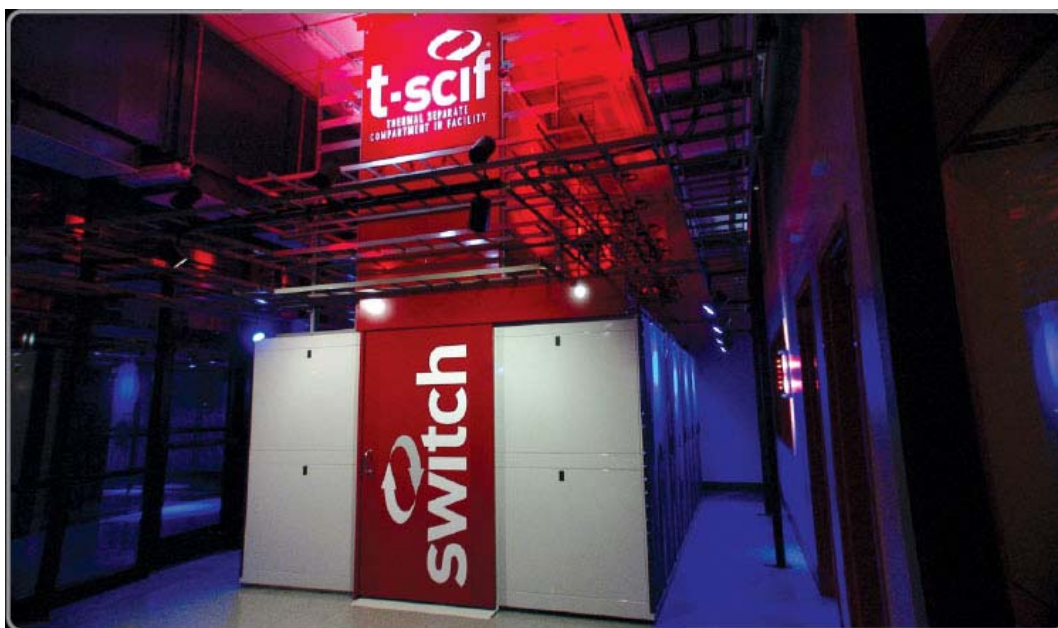
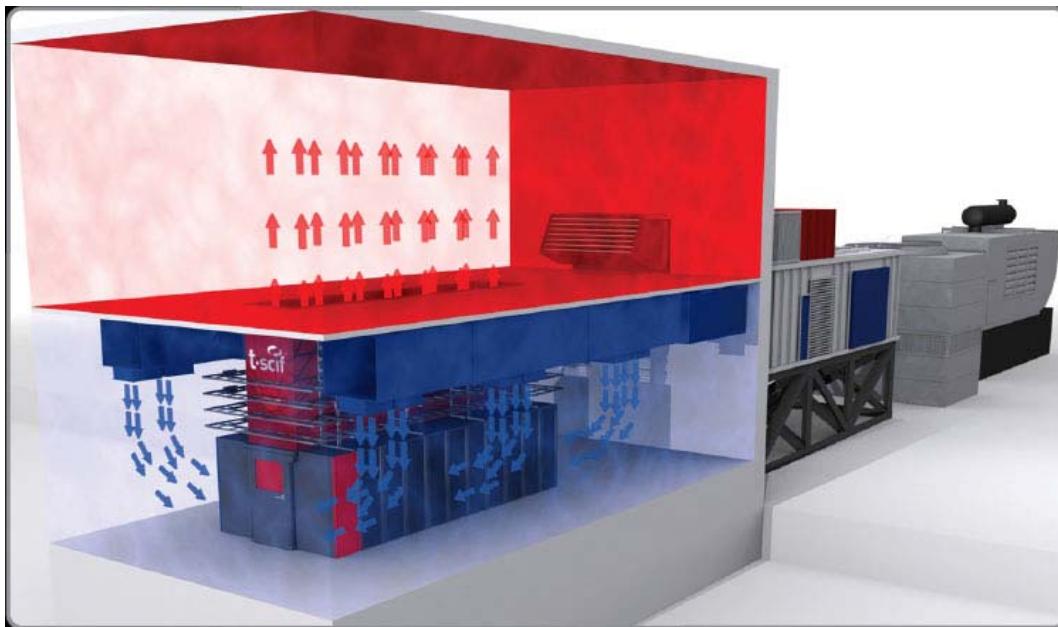
Currently accepting clients at SuperNAP 7



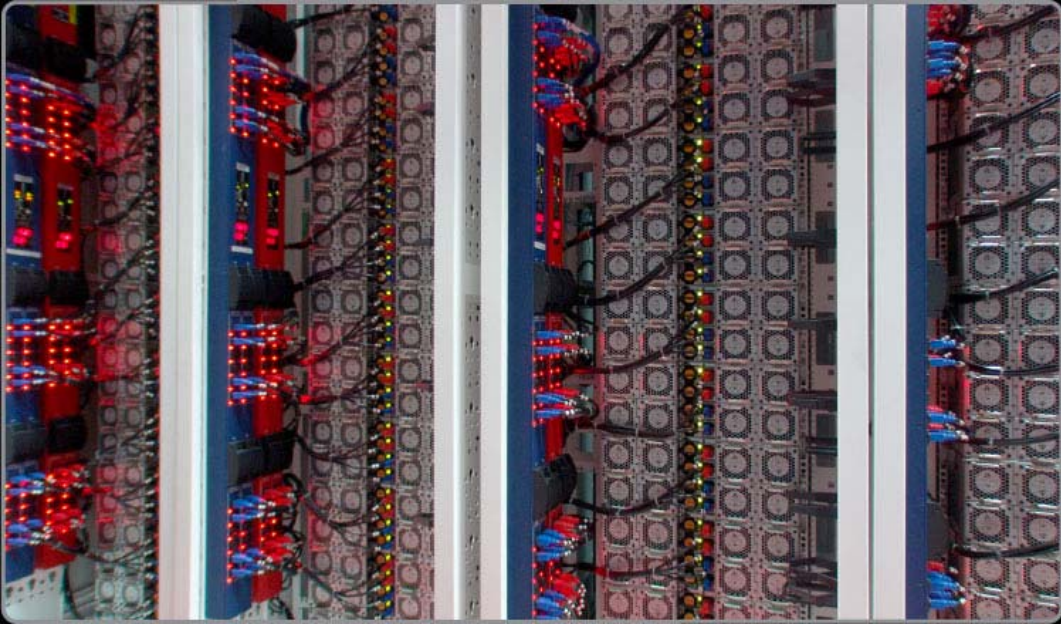
















Switch, Las Vegas, Nevada Copyright © 2012, All Rights Reserved.