



**TSUNEISHI SHIPBUILDING Co., Ltd.**

# COMPANY PROFILE

2014 edition

With our entire company working together as one,  
we shall continue in our venture to build ships that  
contribute to the development of the global society.

Since our founding in 1917, Tsuneishi Shipbuilding Co., Ltd.  
has come to operate on the international shipbuilding stage,  
working as an active member of the community that supports global transportation and logistics.

Along the way, we have received the generous and steady support of our customers,  
our business partners, our employees and their families, as well as everyone living in our region.  
And now, we are striving to become the number one customer rated company in the shipbuilding industry,  
with our entire company working together as one in

the pursuit of cost competitiveness and leading product in order to provide our customers  
with high quality and added value going above and beyond their expectations.

We are currently endeavoring to strengthen the appeal of our company's products,  
cooperating also with research institutions in order to improve the safety, operational revenue,  
cargo and loading efficiency of our ships while also working to decrease CO<sub>2</sub> emissions.

The production of highly dependable ships requires highly accurate designing and technical production skills.  
While we are now striving to create new innovations in our production methods and techniques in order to cut lead times,  
we are, at the same time, making full use of the experience and refined technical skills that  
we have cultivated through the years while passing them on with a steady hand  
to the next generation of young workers both in Japan and overseas.

It has now been nearly 100 years since our founding.

I believe that the source of strength that has allowed our company  
to make such great strides in the development of our business,  
from our humble beginnings constructing wooden ships to our advances  
into the global marketplace, is our spirit to take on new challenges.

No matter how the world around us may change in the future, our spirit will remain unchanged.  
Each and every one of us shall continue moving forward while looking further into the future,  
never failing to give our very best. Maximizing the potential of our spirit of challenge,  
we shall continue, together with all of our customers and business partners,  
in our venture to build "Tsuneishi Ships" that contribute to the development of the global society.

President

TSUNEISHI SHIPBUILDING Co., Ltd.

Takao Kawamoto



CORPORATE  
PHILOSOPHY

**Developing stable businesses to ensure  
the happiness of employees**

CODE  
OF  
CONDUCT

**-Into the next 100 years-**

Tsuneishi Group's forward-looking, bold actions and open-mindedness support both our customers and the local community, while fulfilling the dreams of our employees.

1. Stability and Growth

We promise to provide our customers with products and services that give them satisfaction, to build closer relationship, and to challenge ourselves to be the best with what we do.

2. Importance of a person of ability

We, staff members consider ourselves as a part of a large family who promise to work, study and grow together.

3. A member of the society

We promise to contribute our humble efforts to the revitalization and prosperity of local economies, behaving in good faith as a member of a global society.

TSUNEISHI  
SPIRIT

1. Have Vision!

Create a personal vision for the future that is in harmony with the company's vision so that we can move forward together.

2. Aim for the Top!

Don't settle for second best on either products or services you provide.  
Aim in improving oneself to become the greatest of the best.

3. Stand United!

Work together with a group-wide perspective, cooperating with other departments and group companies to ensure that the entire group works as one.

4. Be Proactive!

Maintain a forward-thinking stance, and move ahead with a positive attitude.

5. Be Considerate and Kind!

Be considerate of others, and always be aware of those around you.

**[Corporate Profile]**

---

Representative	: Takao Kawamoto, President
Business Line	: Shipbuilding and repairs
Founded	: July 1917
Established	: April 30, 1942
Capital	: JPY 100 million
Fiscal year	: December
Head Office and Tsuneishi Factory	: 1083 Tsuneishi, Numakuma-cho, Fukuyama, Hiroshima 720-0393, Japan Tel: +81-84-987-1111
Tokyo Office	: Ichibancho TG Bldg.2, 5F, 2-2 Ichibancho, Chiyoda-ku, Tokyo 102-0082, Japan Tel: +81-3-3264-7715
Fukuoka Office	: TNC Broadcasting Hall 19F, 2-3-2 Momochihama, Sawara-ku, Fukuoka City, Fukuoka 814-0001, Japan Tel: +81-92-832-3890
Employees	: Approx. 760
Cooperative companies	: 58 (approx. 1,000 personnel)
URL	: <a href="http://www.tsuneishi.co.jp">www.tsuneishi.co.jp</a>
TADOTSU SHIPBUILDING Co., Ltd.	: 1-1 Higashi-minatomachi, Tadotsu-cho, Nakatado, Kagawa 764-8503, Japan Tel: +81-877-33-2111
Employees	: Approx. 160
Cooperative companies	: 34 (approx. 800 personnel)

※Business performance data are based on figures current as of the end of 2012.  
Employee numbers are based on figures current as of September 1st, 2013.

## [History]



## Main topics in the shipbuilding business

- 1903 • The founder of TSUNEISHI SHIPBUILDING Co., Ltd., Katsutaro Kambara, commences a shipping business, currently titled KAMBARA KISEN Co., Ltd.
- 1917 • Commences a shipbuilding business at Tsuneishi, Hiroshima pref. as Shiohama Dockyard
- 1942 • Restructures Shiohama Dockyard and re-establishes the company as TSUNEISHI SHIPBUILDING Co., Ltd.
- 1953 • Establishes Sumihiro Sekitan Tradings (currently TSUNEISHI TRADINGS Co., Ltd.)
- 1958 • Constructs first steel ship "Mikomaru"
- 1963 • Establishes TSUNEISHI IRON WORKS Co., Ltd.
- 1966 • Establishes KAMBARA FORESTRY Co., Ltd. (currently TSUNEISHI FACILITIES & CRAFT Co., Ltd.)
- 1968 • Completes 200,000 DWT ship repair dock
- 1973 • Constructs first tanker "Toeimaru"
- 1975 • Completes Slipway No.1 in Tsuneishi Factory
- 1976 • Forms business alliance with HASHIHAMA SHIPBUILDING Co., Ltd. (currently TADOTSU SHIPBUILDING Co., Ltd.)
- 1977 • Constructs "YSI TRADER", the world's largest automobile bulk carrier with 4,000 vehicle capacity (at the time)
- 1979 • Establishes TSUNEISHI ENGINEERING Co., Ltd.
- 1983 • Develops TESS (Tsuneishi Economical Standard Ship) series of ships
- 1984 • Constructs the first ship in the TESS40 series
- 1986 • Establishes the Ship Design Development Office
- 1991 • Constructs a 96,700 ton self-unloading bulk carrier, the largest in the world (at that time)
- 1992 • Establishes TSUNEISHI TECHNICAL SERVICES (PHILS.), Inc. in the Philippines  
• Establishes TSUNEISHI RESEARCH & DEVELOPMENT Co., Ltd.
- 1993 • Establishes K&A METAL INDUSTRIES, Inc. in the Philippines
- 1994 • Establishes TSUNEISHI HEAVY INDUSTRIES (CEBU), Inc. in the Philippines  
• Constructs the first ship in the TESS45 series
- 1995 • Introduces two ship repair floating docks at TSUNEISHI HEAVY INDUSTRIES (CEBU), Inc.
- 1996 • Completes Slipway No. 1 at TSUNEISHI HEAVY INDUSTRIES (CEBU), Inc.
- 1998 • Constructs Japan's first twin skeg shuttle tanker (124,000 DWT)
- 1999 • Constructs 100th ship in the TESS series "JAWA POWER"  
• Acquires ISO9001 certification
- 2000 • Merges with HASHIHAMA SHIPBUILDING Co., Ltd. (currently TADOTSU SHIPBUILDING Co., Ltd.)  
• Constructs the first ship in the TESS52 series
- 2001 • Establishes TSUNEISHI (ZHENJIANG) STEEL STRUCTURE Co., Ltd. in China
- 2003 • Celebrates TSUNEISHI GROUP centenary  
• Establishes TSUNEISHI GROUP (ZHOUZHAN) MARINE AND DEVELOPMENT, Inc. and TSUNEISHI GROUP (ZHOUZHAN) HULL-BODY PRODUCTION, Inc. in China  
• Initiates a system in which the fore and aft. bodies of ships are constructed separately in China before being assembled for delivery at Tsuneishi factory in Japan
- 2004 • Forms a comprehensive business alliance with Samsung Heavy Industries in Korea  
• Forms a comprehensive research cooperation agreement with the Research Department of Hiroshima University Graduate School of Engineering  
• Completes Slipway No. 2 at TSUNEISHI HEAVY INDUSTRIES (CEBU), Inc. in the Philippines  
• Completes Slipway No. 1 at TSUNEISHI GROUP (ZHOUZHAN) SHIPBUILDING, Inc. in China
- 2005 • Establishes TSUNEISHI (SHANGHAI) SHIP DESIGN Co., Ltd. in China.  
• Constructs the first ship in the KAMSARMAX Bulk Carrier series  
• Acquires ISO14001 certification.
- 2006 • Constructs the first ship in the TESS58 series
- 2007 • Merges 11 companies in TSUNEISHI GROUP  
• Changes name to TSUNEISHI HOLDINGS CORPORATION  
• Fukuoka Office Established  
• TSUNEISHI GROUP (ZHOUZHAN) HULL-BODY PRODUCTION, Inc., merges with TSUNEISHI GROUP (ZHOUZHAN) MARINE AND DEVELOPMENT, Inc., and changes name to TSUNEISHI GROUP (ZHOUZHAN) SHIPBUILDING, Inc.  
• Begins whole-ship construction at TSUNEISHI GROUP (ZHOUZHAN) SHIPBUILDING, Inc. and completes slipway No. 2  
• Constructs the 200th ship in the TESS handymax bulk carriers series
- 2009 • Completes and begins the operation of the new building dock at TSUNEISHI HEAVY INDUSTRIES (CEBU), Inc. and TSUNEISHI GROUP (ZHOUZHAN) SHIPBUILDING, Inc.
- 2010 • Constructs "Tenshumaru," the first ship in the T-CORE180 series at TSUNEISHI HEAVY INDUSTRIES (CEBU), Inc. in the Philippines
- 2011 • Spun off from TSUNEISHI HOLDINGS CORPORATION, bringing us to the present  
• Constructs the 100th ship in the KAMSARMAX Bulk Carrier series  
• Constructs the first ship in the TESS98 series  
• Completion of a Trial & Error 1:10 scale model ship "Josho-Maru"  
• Constructs the 100th ship in the TESS58 series
- 2012 • Constructs the 300th ship in the TESS-handymax series
- 2013 • TSUNEISHI GROUP (ZHOUZHAN) SHIPBUILDING, Inc. completes construction on its first container carrier ship, "VEGA SKY," which also marks an important milestone as the company's 100th ship.  
• TADOTSU SHIPBUILDING Co., Ltd. is founded, taking over the operations of Tadotsu Factory.

## Offering high quality products and services from our sites in Asia

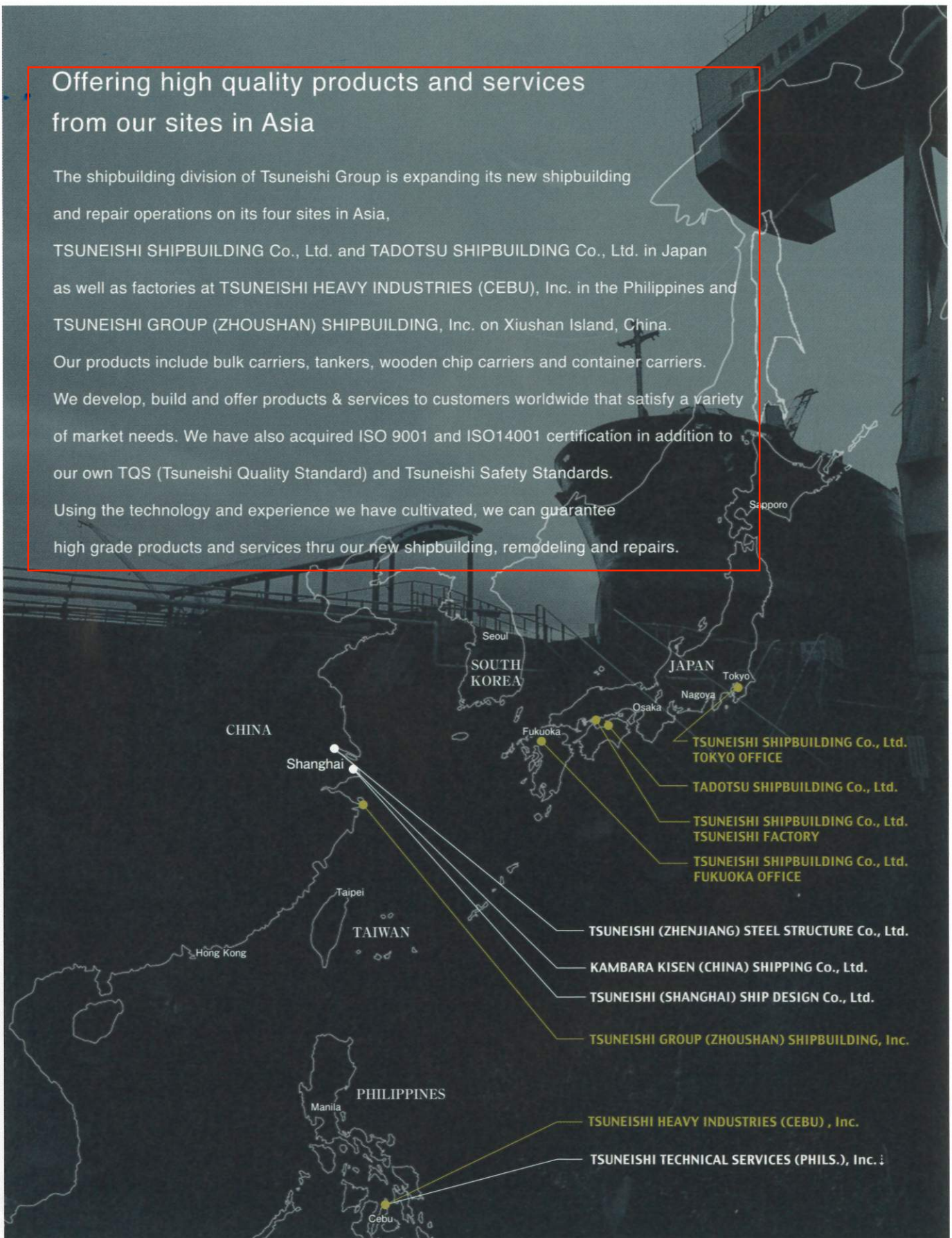
The shipbuilding division of Tsuneishi Group is expanding its new shipbuilding and repair operations on its four sites in Asia,

TSUNEISHI SHIPBUILDING Co., Ltd. and TADOTSU SHIPBUILDING Co., Ltd. in Japan as well as factories at TSUNEISHI HEAVY INDUSTRIES (CEBU), Inc. in the Philippines and TSUNEISHI GROUP (ZHOUZHAN) SHIPBUILDING, Inc. on Xiushan Island, China.

Our products include bulk carriers, tankers, wooden chip carriers and container carriers.

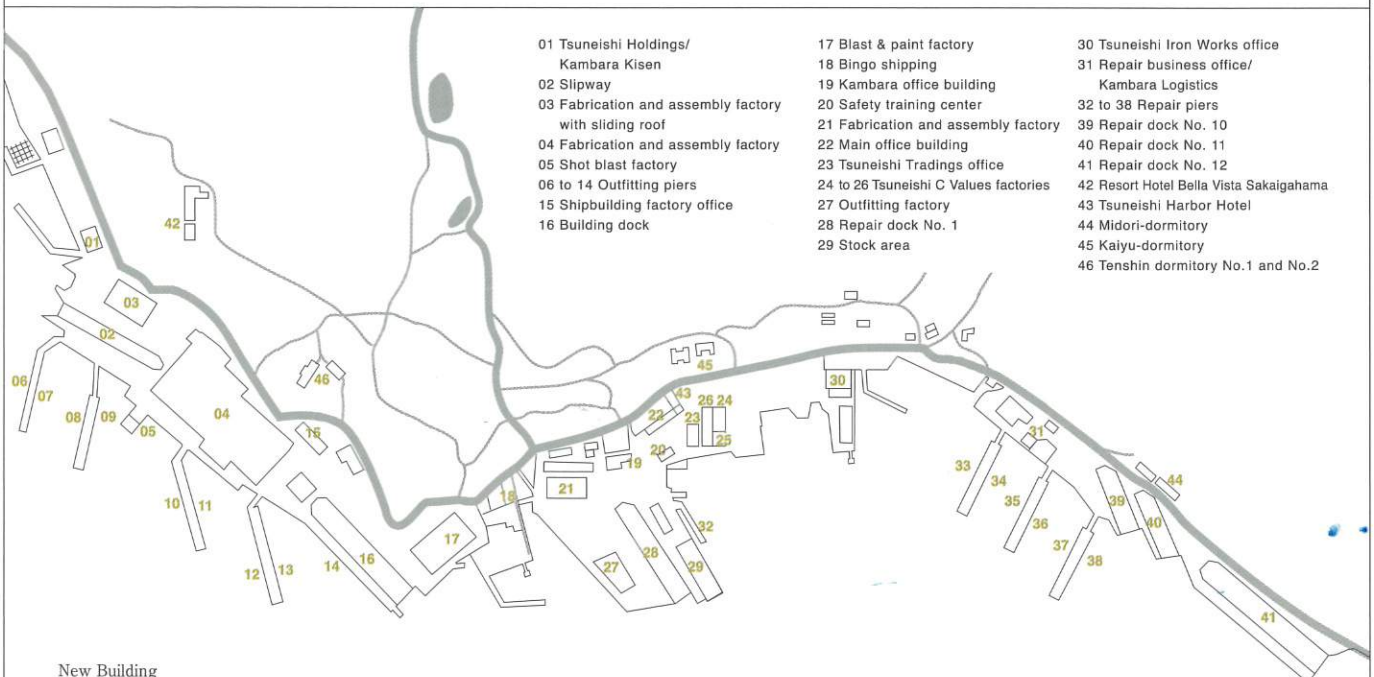
We develop, build and offer products & services to customers worldwide that satisfy a variety of market needs. We have also acquired ISO 9001 and ISO14001 certification in addition to our own TQS (Tsuneishi Quality Standard) and Tsuneishi Safety Standards.

Using the technology and experience we have cultivated, we can guarantee high grade products and services thru our new shipbuilding, remodeling and repairs.



# TSUNEISHI SHIPBUILDING Co., Ltd. Head Office/Tsuneishi Factory

Factory Overview : New shipbuilding and repair  
 Site Area : 496,900 m<sup>2</sup>  
 Employees : Approx. 760  
 (incl. Tokyo office and Fukuoka Office)  
 Employees in Cooperating Companies : Approx. 1,000



**New Building**

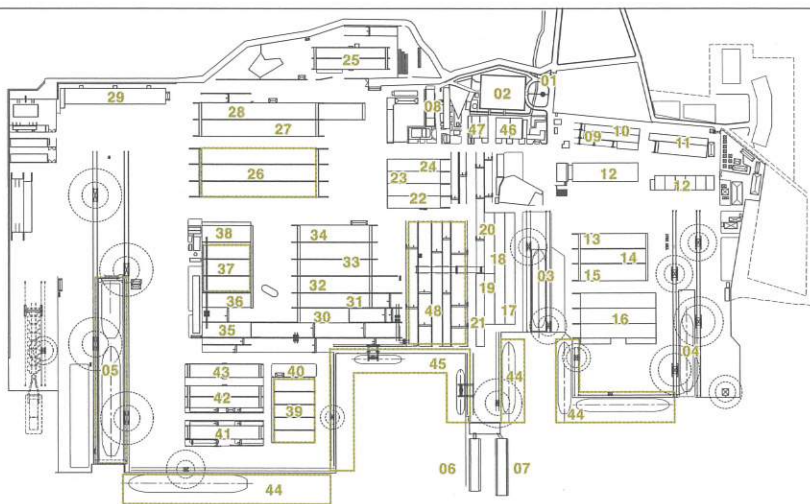
Dock Nos	Length(m)	Breadth(m)	Depth(m)	Cranes
B.Berth	250.00	41.50	—	<Jib crane> 150tons×3, 30tons×1
Building Dock	275.00	46.00	9.00	<Gantry crane> 200tons×1, 100tons×1 <Jib crane> 50tons×1, 40tons×1 30tons×1

**Repair Dock**

Dock Nos	Length(m)	Breadth(m)	Depth(m)
1	250.00	49.5	11.0
10	160.00	35.6	9.0
11	150.00	31.7	9.0
12	330.00	54.5	10.5

# TSUNEISHI HEAVY INDUSTRIES (CEBU), Inc.

Factory Overview : New shipbuilding and repair  
 Site Area : 1,470,000 m<sup>2</sup>  
 Employees : Approx. 740  
 Employees in Cooperating Companies :  
 Approx. 11,000



- 01 Main entrance
- 02 Main office
- 03 Slipway No.1
- 04 Slipway No.2
- 05 Building dock
- 06 Floating dock No.1
- 07 Floating dock No.2
- 08 Training center
- 09 Built-up long. factory
- 10 Sub-assembly factory
- 11 Assembly factory
- 12 Paint factory
- 13 Line welding factory
- 14 Plate joint factory
- 15 Block assembly factory
- 16 Hull fabrication factory
- 17 Sub-assembly factory
- 18 Steel cutting factory
- 19 Angle shotblast factory
- 20 Sub gas cutting factory
- 21 Steel shotblast factory
- 22 Accommodation factory
- 23 Stern frame factory
- 24 Hatch cover sub factory
- 25 Pipe factory
- 26 Block assembly factory
- 27 Mid. assembly factory
- 28 Hatch cover factory
- 29 Paint factory
- 30 Angle shotblast factory
- 31 Angle cutting factory
- 32 Plate bending factory
- 33 Sub-assembly factory
- 34 Plate joint factory
- 35 Steel plate shotblast factory
- 36 Flame planer
- 37 Cutting factory
- 38 Sub-gas cutting factory
- 39 Warehouse
- 40 Engine warehouse
- 41 Outfitting block assembly factory
- 42 Outfitting cover factory
- 43 T-beam factory
- 44 Outfitting pier
- 45 Loading/unloading pier
- 46 Warehouse
- 47 Workshop electrical
- 48 Steel stock area

## [Company Profile]

Company Name : TSUNEISHI HEAVY INDUSTRIES (CEBU) , Inc.  
 Head Office : West Cebu Industrial Park-SEZ, Buanoy,  
 Balamban, Cebu, Philippines, 6041  
 TEL.+63-32-230-8400~8422  
 FAX.+63-32-234-0311/333-2230

Established : September 1994  
 Capital : PHP 450,000,000.-  
 URL : www.thici.com

## New Building

Dock Nos	Length(m)	Breadth(m)	Depth(m)	Cranes
B.Berth No.1	200.00	34.00	—	200tons Jib crane×2
B.Berth No.2	250.00	41.00	—	200tons Jib crane×4
Building Dock	450.00	60.00	11.50	300tons Jib crane×4 1,300tons Floating crane×1

## Repair Dock(No.1 Floating Dock)

Length(m)	128.00
Breadth(m)	23.30
Lift Cap.	5,000ton

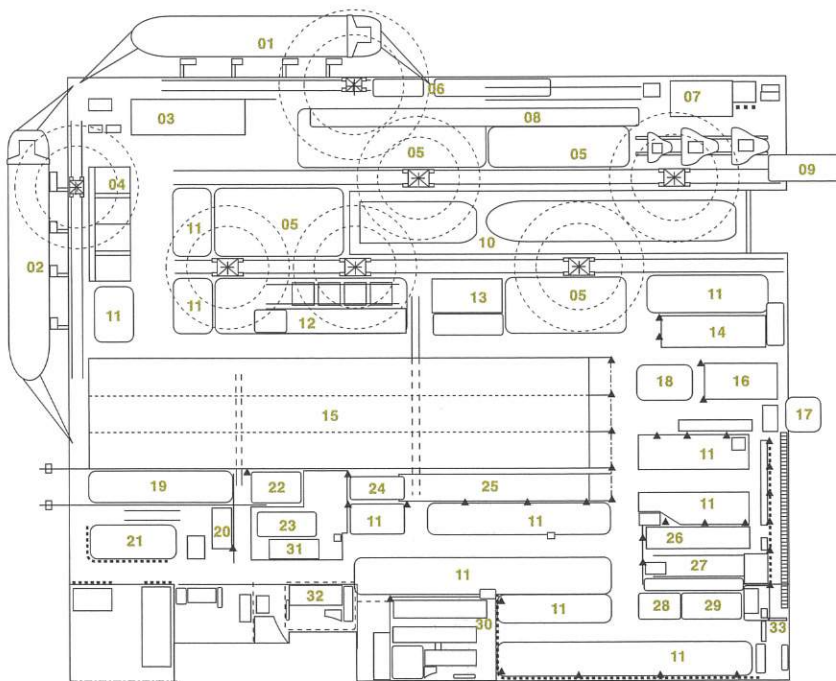
## Repair Dock(No.2 Floating Dock)

Length(m)	139.50
Breadth(m)	24.50
Lift Cap.	8,500ton



# TADOTSU SHIPBUILDING Co., Ltd.

Factory Overview : New shipbuilding  
 Site Area : 400,000 m<sup>2</sup>  
 Employees : Approx. 160  
 Employees in Cooperating Companies : Approx. 800



- 01 North pier
- 02 West pier
- 03 Painting shop at rain
- 04 Blasting & painting shop
- 05 Hull block pre-erection area
- 06 Outfittings stock area
- 07 Scaffolding materials stock area
- 08 Pipe unit work stage
- 09 Engine room blocks assembly area
- 10 Building dock
- 11 Hull blocks stock area
- 12 New hull block assembly stage
- 13 6Y block assembly stage
- 14 Equipment warehouse
- 15 Fabrication & assembly shop
- 16 Main office
- 17 Class & supervisors office
- 18 Sub-assembly materials stock area
- 19 Unloaded steel plates stock area
- 20 Fabrication center
- 21 Scrap stock area
- 22 Cut plates stock area
- 23 Pipe pallets stock area
- 24 Steel plates stock area
- 25 New assembly shop (6W)
- 26 Fabrication shop of T.I.W
- 27 Tsuneishi iron works office
- 28 Fabricated large blocks stock area
- 29 Outfittings stock area
- 30 "Higashi-minato" dormitory
- 31 Safety training center
- 32 Former main office
- 33 Main entrance

## New Building

Dock Nos	Length(m)	Breadth(m)	Depth(m)	Cranes
Building Dock	380.00	59.00	11.50	300tons Jib crane×2, 150tons Jib crane×3

**TSUNEISHI TECHNICAL SERVICES (PHILS.), Inc.**

Business Line : Ship design  
Employees : Approx. 300



**[Company Profile]**

Company Name : TSUNEISHI TECHNICAL SERVICES(PHILS.), Inc.  
Headquarters Plant : West Cebu Industrial Park-SEZ,  
Buanoy, Balamban, Cebu, Philippines, 6041  
TEL +63-32-2308478  
FAX +63-32-3332513  
Established : April 1992  
Capital : PHP 60,000,000.-

**TSUNEISHI (SHANGHAI) SHIP DESIGN Co., Ltd.**

Business Line : Ship design  
Employees : Approx. 220  
(Head Office 60, Xiushan Branch 160)



**[Company Profile]**

Company Name : TSUNEISHI (SHANGHAI) SHIP DESIGN Co., Ltd.  
Head Office : 19th Floor, South Building, FuDe Building, No.1688,  
North SiChuan Road, Shanghai, 200080, China  
TEL +86-21-33011115 FAX +86-21-63939965  
Xiushan Branch : Retiao Village, Xiushan District, Daishan County,  
Zhoushan City, Zhejiang Province, 316261, China  
TEL +86-580-4730005 FAX +86-580-4730042  
Established : December 2005  
Capital : USD 640,000.-

**TSUNETETSU (CEBU), Inc.**

Business Line : Machining, Ship Outfitting  
and Equipment Installation  
Employees : Approx. 510



**[Company Profile]**

Company Name : TSUNETETSU (CEBU), Inc.  
Headquarters Plant : West Cebu Industrial Park-SEZ,  
Buanoy, Balamban, Cebu, Philippines, 6041  
TEL +63-32-2308468  
FAX +63-32-4650185  
Established : October 1996  
Capital : PHP 24,000,000.-

**TSUNETETSU (ZHOUZHAN) Inc.**

Business Line : Machining, Ship Outfitting  
and Equipment Installation  
Employees : Approx. 620



**[Company Profile]**

Company Name : TSUNETETSU (ZHOUZHAN) Inc.  
Head Office : Retiao Village, Xiushan District, Daishan County,  
Zhoushan City, Zhejiang Province, 316261, China  
TEL +86-580-4730073  
FAX +86-580-4730097  
Established : January 2005  
Capital : USD 789.3-

## Researching all the possibilities in performance and design for a ship that will continue to be favored by the world's ship owner

From a ship owner's point of view, the ideal ship is one that can transport cargo safely at all times, and deliver superior environmental efficiency by saving power and reducing CO<sub>2</sub> emissions. To offer ships that are highly valued to ship owners, WE at TSUNESHI SHIPBUILDING Co., Ltd. challenge every day for technological innovation.

We use the latest computer systems including 3D CAD and CFD (Computational Fluid Dynamics) as well as circulating water channel, large-scale towing tank test and 1:10 scale model ship test in real sea condition. With this we are able to generate accurate analysis and experimental evidence that help us develop ships that are highly safe and reliable. By year 2020, we aim to cut down new shipbuilding CO<sub>2</sub> emission by 40% as opposed to that in 1990, and continue to collaborate with universities and research & development organization. In the current market, the increasing demand for bigger ships and further operation revenue, TSUNEISHI SHIPBUILDING Co., Ltd. pursues what we call the two Eco's - namely, Economy and Ecology - for which we continue to research the possibilities of all aspects of design and performance.



1:10 scale ship model "Jo-sho-maru"



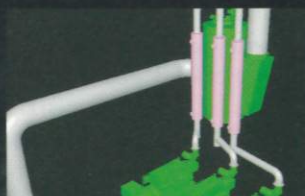
"MT-COWL", reduced wind resistance



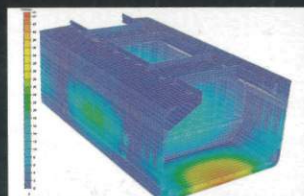
CFD simulation



"MT-FAST", increased propulsion efficiency

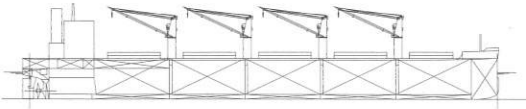


Generator engine waste heat recovery unit



Result of F.E.M.

## 35,300DWT BULK CARRIER



[SPECIFICATION]

35,300DWT BULK CARRIER

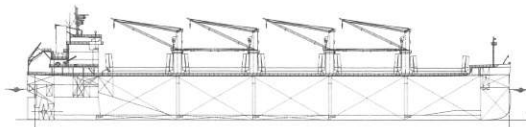
Dimensions	
Length over all × Breadth × Depth	177.0m × 30.00m × 14.50m
Draft (full load)	9.90m
DW (full load)	35,300MT
Gross Tonnage	22,600
Cargo Capacity	45,400m <sup>3</sup>
Service speed (full load)	14.0knots

Despite her compact size (an overall length of 177 meters, a width of 30 meters and a depth of only 9.9 meters) this semi-box shaped handy bulker's increase deadweight capacity is designed to load cargo stems of 30,000 MT +/- 10% whilst also offering the versatility to load a wide variety of cargoes.



photo by computer graphics

## TESS45BOX



[SPECIFICATION]

45,300DWT BULK CARRIER

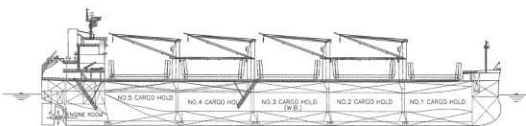
Dimensions	
Length over all × Breadth × Depth	183.0m × 30.40m × 16.50m
Draft (full load)	11.59m
DW (full load)	45,300MT
Gross Tonnage	27,700
Cargo Capacity	56,000m <sup>3</sup>
Service speed (design draft)	14.0knots

TESS45BOX has an overall length of 183 meters and keep 45,000 class deadweight metric tons with its compact size. This Box-type bulk carrier is designed to transport not only bulk cargoes but also wood pulps and steel products. With its cargo box type hull, it increases versatility, cargo handling efficiency, and maintenance.



photo by computer graphics

## TESS 58



[SPECIFICATION]

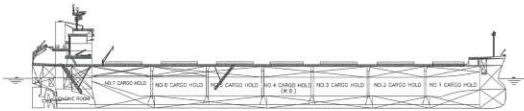
57,700DWT BULK CARRIER

Dimensions	
Length over all × Breadth × Depth	190.0m × 32.26m × 18.00m
Draft (full load)	12.8m
DW (full load)	57,700MT
Gross Tonnage	32,600
Cargo Capacity	72,600m <sup>3</sup>
Service speed (design draft)	14.5knots

TESS stands for Tsuneishi Economical Standard Ship. The hull form was developed to deliver the highest standards of propulsion, steering, stability and other performance parameters to match the needs of ship owners and the changing times. The ship has a reputation for being easy to handle, and has had the support from ship owners both at home and abroad for near 30 years.



# KAMSARMAXBC



## [SPECIFICATION]

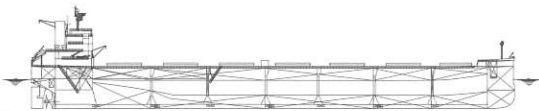
### 81,600DWT BULK CARRIER

Dimensions	
Length over all × Breadth × Depth	229.0m × 32.26m × 20.00m
Draft (full load)	14.4m
DW (full load)	81,600MT
Gross Tonnage	43,400
Cargo Capacity	97,000m <sup>3</sup>
Service speed (design draft)	14.5knots

**KAMSARMAX** is so named because it is a bulk carrier with a maximum hull form of 229 meters that is capable of docking in the major bauxite export port of Kamsar in Guinea, West Africa. As with the TESS series, KAMSARMAX ships were developed to offer dramatic improvements in ship steering capability, stability and propulsion, as well as low fuel consumption.



# TESS98



## [SPECIFICATION]

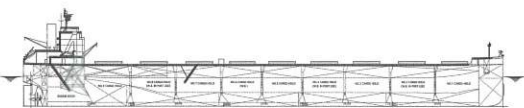
### 98,000 DWT BULK CARRIER

Dimensions	
Length over all × Breadth × Depth	240.0m × 38.00m × 19.95m
Draft (full load)	14.45m
DW (full load)	98,000MT
Gross Tonnage	52,500
Cargo Tank Capacity	112,500m <sup>3</sup>
Service speed (design draft)	14.5knots

TESS98 is the largest vessel of the TESS Series that has an overall length of approximately 240 meters and weighs nearly 100,000 deadweight metric tons. It is equip with Ballast Water Treatment System and Automatic Ballast Displacement Standard that improves functions and transport efficiency that is at the same time environment-friendly.



# T-CORE<sub>180</sub>



## [SPECIFICATION]

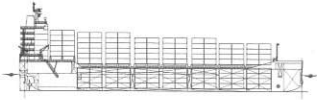
### 180,000DWT BULK CARRIER

Dimensions	
Length over all × Breadth × Depth	291.9m × 45.00m × 24.50m
Draft (full load)	18.04m
DW (full load)	180,000MT
Gross Tonnage	92,900
Cargo Capacity	200,000m <sup>3</sup>
Service speed (design draft)	15.2knots

Let us introduce our new cape size bulker "T-CORE", recently developed to be a core part of the global marine transport. T is the initial for Tsuneishi, and the acronym CORE stands for "For Customer's Operation, Revenue, and Environment & Safety". This phrase is based on the development concept ; "a core force in the customer's businesses". The number 180 in the name "T-CORE180" refers to its size of 180,000 DWT.



## Container Carrier



[SPECIFICATION]

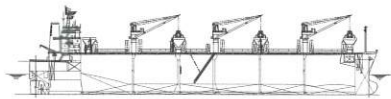
1,020TEU CONTAINER CARRIER

Dimensions	
Length over all × Breadth × Depth	143.0m × 22.60m × 11.30m
Draft (full load)	8.20m
DW (full load)	12,000MT
Gross Tonnage	Less than 10,000
Cargo Capacity	1,020TEU
Service speed (design draft)	18.0knots

Outfitted with an upgraded main engine, the 1020 TEU incorporates innovative new techniques obtained through the development of bulkers such as the TESS series. This ship offers greatly improved fuel efficiency.



## Wooden Chip Carrier



[SPECIFICATION]

3,600,000CF WOODEN CHIP CARRIER

Dimensions	
Length over all × Breadth × Depth	199.9m × 32.20m × 22.85m
Draft (full load)	11.52m
DW (full load)	49,200MT
Gross Tonnage	49,700
Cargo Capacity	101,940m³
Service speed (design draft)	14.3knots

The cargo hold is divided into six sections with hatch openings outfitted with end-folding type hatch covers.



## Crude Oil Carrier



[SPECIFICATION]

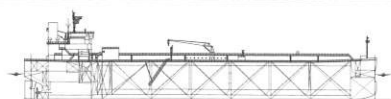
106,400DWT AFRAMAX TANKER

Dimensions	
Length over all × Breadth × Depth	243.8m × 42.00m × 21.25m
Draft (full load)	14.55m
DW (full load)	106,400MT
Gross Tonnage	60,500
Cargo Tank Capacity	126,500m³
Service speed (design draft)	15.0knots

The Aframax Tanker is a 100,000 ton class crude oil tanker that improves operation revenue.



## Product Oil and Chemical Product Carrier



[SPECIFICATION]

50,300DWT PRODUCT OIL TANKER

Dimensions	
Length over all × Breadth × Depth	183.0m × 32.20m × 19.10m
Draft (scantling, moulded)	13.0m
DW (full load)	50,400MT
Gross Tonnage	30,400
Cargo Capacity	55,800m³
Service speed (design draft)	15.8knots

This 50,000 ton class middle range oil product tanker is outfitted with an independent pump. It can carry refined petroleum products and light chemical cargo such as liquid chemicals.



photo by computer graphics

**From routine repairs to retro-fit works  
for the Ballast Water Management System,  
we have acquired an international reputation and trust on  
our engineering expertise and proposal-making capability.**

Repair works of Tsuneishi Group is conducted at two sites;

Tsunesihi factory of TSUNEISHI SHIPBUILDING Co., Ltd. and

TSUNESIHI HEAVY INDUSTRIES (CEBU), Inc. (Cebu Island, Philippines).

Taking advantage of the technology gained through our new ship building business,

such as routine repairs aimed at regular class survey and maintenance,  
we are meeting a range of demands that includes dealing with sea casualty,  
conversion works, and remodeling of larger hull.

Furthermore, both our Japan and overseas repair yards offers services not only for retrofitting and remodeling,  
but also ballast water management system that provide better services to satisfy the ship owners' demands.

TSUNEISHI SHIPBUILDING conducts ship repairs on approx. 150 vessels per year.

Through schedule management and quality control,

as well as advanced engineering proposal-making capability,  
we are valued by many ship owners for supporting their ship operations.



BWMS Outfitting image by 3D scanner



# Supporting comfortable lives for everyone through a wide range of businesses

From a base of shipbuilding and marine transportation,

Tsuneishi Group has expanded into a wide range of businesses to support comfortable living for everyone.

Through the spirit of cooperation we have developed since the original company was founded,

we invest energy in a range of cultural and environmental activities including the management of related facilities.

## Tsuneishi Group Businesses

### Pure Holding Company

- TSUNEISHI HOLDINGS CORPORATION
- TSUNEISHI HOLDING (CEBU), Inc.

### Shipbuilding Operations

- |  |   |
|--|---|
| ■ TSUNEISHI SHIPBUILDING Co., Ltd.                     | : Shipbuilding and repair   |
| ■ TADOTSU SHIPBUILDING Co., Ltd.                       | : Shipbuilding  |
| ■ TSUNEISHI IRON WORKS Co., Ltd.                       | : Ship component manufacturing, outfitting work, building panel manufacturing   |
| ■ TSUNEISHI TRADINGS Co., Ltd.                         | : Wholesaler business of steel products, pipes, pipe materials and valves, as well as pipe processing, ship and land machinery trading and warehousing business |
| ■ TSUNEISHI ENGINEERING Co., Ltd.                      | : Design of ships, outfitting components, marine structures, and other related onshore facilities   |
| ■ TSUNEISHI HEAVY INDUSTRIES (CEBU), Inc.              | : Shipbuilding and repair   |
| ■ TSUNETETSU (CEBU), Inc.                              | : Machining, outfitting work, building panel manufacturing  |
| ■ TSUNEISHI TECHNICAL SERVICES (PHILS.), Inc.          | : Ship design   |
| ■ K&A METAL INDUSTRIES, Inc.                           | : Manufacture and sale of ship's block and outfitting components  |
| ■ TSUNEISHI ACCOMMODATION (CEBU), Inc.                 | : Manufacture of wooden furniture, outfitting of ship accommodation, etc.   |
| ■ ASIAN CRAFT (CEBU), Inc.                             | : General distribution service, marine transportation, overseas business  |
| ■ TSUNEISHI GROUP (ZHOUZHAN) SHIPBUILDING, Inc.        | : Shipbuilding, fabrication of accommodation, large components for outfitting, and ship's block   |
| ■ TSUNEISHI (ZHENJIANG) STEEL STRUCTURE Co., Ltd.      | : Fabrication of outfitting components  |
| ■ TSUNETETSU (ZHOUZHAN), Inc.                          | : Machining, ship component manufacturing, outfitting work  |
| ■ TSUNEISHI (SHANGHAI) SHIP DESIGN Co., Ltd.           | : Ship design   |
| ■ TSUNEISHI (DAISHAN) CONSTRUCTION & SERVICE Co., Ltd. | : Fabrication of accommodation, outfitting work   |
| ■ CEBU INDUSTRIAL PARK DEVELOPERS, Inc.                | : Equity method affiliate   |

### Shipping Operations

- |   |   |
|---|---|
| ■ KAMBARA KISEN Co., Ltd.                                 | : Chartering, marine transportation, vessel operation   |
| ■ KAMBARA LOGISTICS Co., Ltd.                             | : General distribution service, marine transportation services, warehousing                                   |
| ■ KAMBARA MARINE K. K.                                    | : Crew management   |
| ■ BINGO SHOSEN Co., Ltd.                                  | : Ferry services  |
| ■ KITANIHON SOKO KOUN Co., Ltd.                           | : Warehouse services  |
| ■ YAMASHITA KAISOUTEN Co., Ltd.                           | : Warehouse services, transportation services   |
| ■ CEBU ASIATIC SHIPPING & PORT SERVICES, Inc.             | : Tug and launch services   |
| ■ KAMBARA KISEN (CHINA) SHIPPING Co., Ltd.                | : Agency for Kambara Kisen, Japan (booking, issuing of B/L, operation control)                                |
| ■ SHANGHAI KAMBARA INTERNATIONAL TRANSPORTATION Co., Ltd. | : International transportation agency for import and export of cargo, consignment, cargo booking, warehousing |
| ■ CHIJIN SHIPPING S.A.                                    | : Ship Operations   |
| ■ KAMBARA KISEN (HONG KONG) Ltd.                          | : Ship Operations   |
| ■ KAMBARA KISEN SINGAPORE PTE Ltd.                        | : Ship Operations, Chartering   |
| ■ TSUNEISHI GROUP (ZHOUZHAN) ENGINEERING SERVICE Inc.     | : Consulting of ship operation, transportation in factory   |