

[Explore](#)
[Overview](#)
[Episodes](#)
[Extras](#)

Travel the world with Charlie Annenberg Weingarten and the explore.org team as they embark on a philanthropic mission to experience different cultures.

The series is produced by [explore.org](#), a philanthropic media organization and a multi-media division of the Annenberg Foundation. Created by filmmaker and philanthropist Charles Annenberg Weingarten to champion the selfless acts of others, inspire lifelong learning and help people fall in love with the world again, [explore.org](#) is home to more than 300 original films and a massive library of world-class photography from all over the globe.

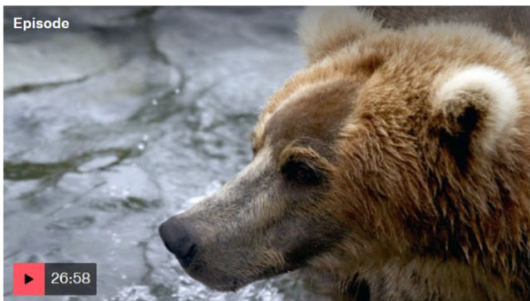
Upcoming Airdates

Suggested Show



Earth Focus

## Full Episodes



Explore  
**Pearls of the Planet: Brown Bears**

Explore takes us up-close and personal with brown bears living in Alaska's Katmai National Park.



Explore  
**Pearls of the Planet: The Arctic**



"Explore" takes you to the Northern reaches of the planet, through live high definition webcams and expeditions deep into the Arctic. On the shores of Hudson Bay, polar bears wait for the ice to harden so they can move out miles from shore to hunt for the seals that feed them over the winter. Beluga whales gather in large pods, while the Aurora Borealis swirls overhead. Without narration or music, Explore's "Pearls of the Planet" presents the natural sights and sounds of the Arctic in a way never before presented on broadcast television.



Explore

### Eight Tribes Experience the Soul of the Grand Canyon

Travel down the Colorado River to experience the Grand Canyon's wild splendor, and explore the connections between man and nature. This film is full of beautiful photography and deep conversations among Native American leaders.



Explore

### No Child Is Born A Terrorist

What happens when Palestinian youth must choose between the art of theater and a life of violence or even martyrdom? "Explore" takes you to a radicalized refugee camp to find out.



Explore

### The Arctic

On a philanthropic, fact finding mission to the Arctic, Charles Annenberg Weingarten and the explore.org team dive into the unique culture of the Inuit people of Greenland and learn about their traditional cuisine, which includes raw seal meat, whale, caribou, walrus, and fish. Charles also visits the Qimaavik Women's Shelter for abused women and children, and learns about the high crime rate of Nunavut territory being tackled by extraordinary individuals in the area. Lastly, Charles experiences the husky throat singing of two Inuit girls, breaks the myth of the Arctic kiss, and learns Inuktitut from a patient Inuit elder. Learn more at explore.org.



Explore

### Nature Helps Combat Veterans Heal

The explore.org team visits with vets to witness the connection between nature and healing.



Explore

### Traveling with Jihad

Judaism, Christianity, and Islam provide differing perspectives on similar themes. Join Jihad Turk as he leads Charlie through the common threads.



Explore **West Virginia - Hillbillies, Coal Miners, Treehuggers**

Travel to the heart of Appalachia and experience the hidden gem that is West Virginia. Feel the pulse of coal mining running through the veins of locals as well as hear the environmental opposition to the practice in this moving Explore special.



Explore **Southwest Borderlands**

The American Southwest is a complex region where cultures transcend political borders. Join Charlie and the Explore team as they meet people pursuing a life in the United States while struggling to maintain their cultural heritage and longstanding traditions.



Explore **Witchcraft**

This documentary about the Salem Witch Trials gives a stark portrayal of how prejudice and fear can destroy a deeply religious community.

+ Show more

# Subscribe to our newsletter

Sign Up



Watch Shows Live Stream

About About Link TV Careers Press Room Contact Us

Support Link TV Donate Gift Planning Vehicle Donation Corporate Support More Ways to Give

Our Channels KCET PBS SoCal Link TV

Get the App

Public Media Group of Southern California is a 501(c)(3) nonprofit organization. Tax ID: 95-2211661

Privacy Policy | Terms of Use

© 2022 - Public Media Group of Southern California