



PORSCHE



Cayenne

Good to know – Owner's Manual

Dr. Ing. h. c. F. Porsche AG is the owner of numerous trademarks, both registered and unregistered, including without limitation the Porsche Crest®, Porsche®, Boxster®, Macan®, Carrera®, Cayenne®, Cayman®, Panamera®, Speedster®, Tiptronic®, Tequipment®, VarioCam®, PCM™, PDK®, 911®, 718®, 4S®, RS® and the model numbers and the distinctive shapes of the Porsche automobiles such as, the federally registered 911 and Boxster automobiles in the US. The third party trademarks contained herein are the properties of their respective owners. Porsche Cars North America, Inc. and its affiliates believe the specifications to be correct at the time of printing. However, specifications, standard equipment and options are subject to change without notice. Some options may be unavailable when a vehicle is built. Some vehicles may be shown with equipment that is not available in the US and Canada. Please ask your authorized Porsche dealer for advice concerning the current availability of options and verify the optional equipment that you ordered. Porsche recommends seat belt usage and observance of traffic laws at all times.
© 2018 Dr. Ing. h. c. F. Porsche AG

WARNING

Operating, servicing and maintaining a passenger vehicle or off-road vehicle can expose you to chemicals including engine exhaust, carbon monoxide, phthalates, and lead, which are known to the State of California to cause cancer and birth defects or other reproductive harm. To minimize exposure, avoid breathing exhaust, do not idle the engine except as necessary, service your vehicle in a well-ventilated area and wear gloves or wash your hands frequently when servicing your vehicle. For more information go to www.P65Warnings.ca.gov/passenger-vehicle.

Safety instructions, warnings and symbols in the Owner's Manual

For your own protection and longer service life of your vehicle, please heed all operating instructions and special warnings. These special warnings contain important messages regarding your safety and/or the potential for damage to your Porsche. Ignoring

them could result in serious mechanical failure, serious personal injury or death.

Different types of warnings and symbols are used in this Owner's Manual.

DANGER

Serious injury or death

Failure to observe warnings in the "Danger" category will result in serious injury or death.

WARNING

Possible serious injury or death

Failure to observe warnings in the "Warning" category can result in serious injury or death.

CAUTION

Possible moderate or minor injury

Failure to observe warnings in the "Caution" category can result in moderate or minor injuries.

NOTICE

Failure to observe warnings in the "Notice" category can result in damage to the vehicle.

Information

Additional information is indicated using the word "Information".

- ✓ Prerequisites that must be met in order to use a function.
- ▶ Instructions that must be followed.
- 1. Instructions are numbered in cases where a sequence of steps must be followed.
- ▶ Indicates where you can find more information on a topic.

A
B
C
D
E
F
G
H
I
J
K
L
M
N
O
P
Q
R
S
T
U
V
W
X
Y
Z

Transmission

Driving with Porsche Tiptronic S

Tiptronic S is an 8-speed automatic transmission with an automatic and a manual shifting mode. In **automatic shifting mode** (operating mode **D**), gear changing is automatic. You can change temporarily from automatic to manual shifting mode using the shift paddles on the steering wheel.

In **manual shifting mode** (operating mode **M**), you can change gear using the selector lever or the shift paddles on the steering wheel.

You can switch between the **D** and **M** modes as required while driving.

- ▶ Make sure that the gearshift paddles on the steering wheel are not accidentally operated in automatic and manual shifting mode, triggering unintended gearshifts.

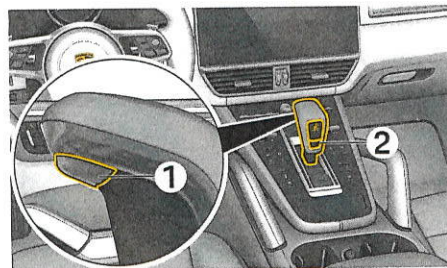


Fig. 214: Changing operating mode

- 1 Release button
- 2 Transmission parking lock (P button)

Changing operating mode

When the ignition is off, operating mode **P** is active and the selector lever is freely movable in the shift gate.

The operating mode can only be changed if the release button (1) on the selector lever has been pressed. In addition to the release button, the brake pedal must be pressed when switching from the **P** or **N** operating mode. It is only possible to switch to the **M** operating mode from the **D** operating mode. In order to switch to the **P** operating mode, either the **P** button (2) on the selector lever has to be pressed or the ignition switched off.

Following each actuation, the selector lever returns to its original center position and the selected operating mode is indicated on the instrument cluster.

- ▶ Please see chapter "Reading the indicator for the mode and engaged gear" on page 265.

Release button

The release button (1) on the selector lever prevents the gear from being changed unintentionally. It must always be pressed before changing mode.

P button

The P button (2) on the selector lever activates the transmission parking lock. When the ignition is switched off, the transmission parking lock is automatically engaged in the **D**, **M** or **R** operating modes.

i Information

The transmission parking lock is also engaged in **D**, **M** or **R** operating modes when you leave the vehicle (driver-side seat belt unfastened, driver's door opened, brake pedal released).

The vehicle can still be moved with the driver's door open and the driver's seat belt unfastened by releasing the electric parking brake manually and if necessary switching to the desired operating mode **D**, **M** or **R**. In this case, the parking brake remains released and the desired operating mode **D**, **M** or **R** remains selected and the transmission parking lock is not automatically activated.

- ▶ Please see chapter "Starting and stopping the engine" on page 248.

Starting the engine

The engine can only be started if the brake pedal is pressed and mode **P** or **N** is activated.

For information on starting E-Hybrid vehicles:

- ▶ Please see chapter "Hybrid vehicle" on page 131.

Driving off

- ▶ Only select the desired operating mode for driving off (**D**, **M** or **R**) when the engine is idling and keep the brake pedal pressed while doing so.
- ▶ Because the vehicle moves (creeps) when a gear is engaged, you should only release the brake when you want to drive off.

Driving off on gradients

- ▶ Please see chapter "HOLD Function: Standstill Management" on page 129.

Stopping the vehicle

- ▶ For a brief stop (e.g. at traffic lights) select the selector lever in operating mode **D** and release the vehicle with the brake pedal.
- ▶ Do not use the accelerator pedal on gradients, but use the electric parking brake instead.
- ▶ Before leaving the vehicle, always release the electric parking brake and activate mode **P**.

Parking the vehicle

- ▶ Go easy on the accelerator!
- ▶ When parking or maneuvering, always use the brake pedal to control the speed by careful use.

Reading the indicator for the mode and engaged gear

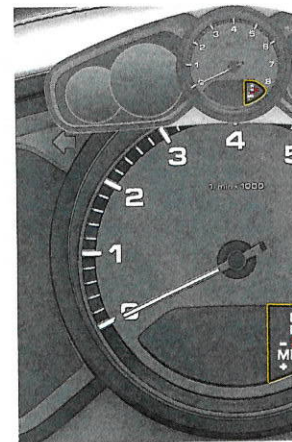


Fig. 215: Mode and engaged gear indicator cluster