

**cataCXium POMetB**

SOL20758-8

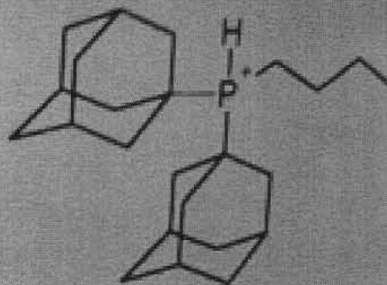
MW 317.41

C<sub>19</sub>H<sub>28</sub>NOP

**TmD : 365 g**

Caution, not fully tested compound / For lab  
use only / Avoid contact with skin and eyes

solvias



Fill date 13.04.2010

**cataCXium AHI**

Solvias AG, P.O. Box,  
4002 Basel, Switzerland

SOL20746-4  
MW 486.46  
 $C_{24}H_{39}P \cdot HI$

TmD : 576 g

Caution, not fully tested compound / For lab  
use only / Avoid contact with skin and eyes