

EPSON®






English

EasyMP.net Setup Guide

English

Notations Used in This Guide

General information symbols

| | |
|---|--|
|  CAUTION | Indicates procedures which may result in damage or injury if sufficient care is not taken. |
|  TIP | Indicates additional information and points which may be useful to know regarding a topic. |
|  | Indicates pages where related information or a more detailed description is provided. |
|  | Indicates that an explanation of the underlined word or words in front of this symbol appears in the glossary of terms. See "Appendices : Glossary" in the User's Guide. |
|  PROCEDURE | Indicates operating methods and the order of operations. The Procedure indicated should be carried out in the order of the numbers. |
| [(Button Name)] | Shows the buttons on the control panel or on the remote control. Ex: [ESC] |

Meanings of "Projector"

When "projector" appears in the text of this guide, it may refer to items which are accessories or optional equipment in addition to the main projector unit itself.

Contents

| | |
|---|-----------|
| Functions and Features of EasyMP.net | 5 |
| Projection by Network Connection | 5 |
| Using the Projector via Wireless LAN | 7 |
| Operating the PC from the Projector | 8 |
| Presentation | 9 |
| Reporting an Error Using the Mail Notification Function | 9 |
| Network Connection | 10 |
| Setting up EasyMP.net | 11 |
| Setting the Date and Time | 11 |
| Renaming a Projector | 15 |
| Establishing a Network Connection (via a Network Cable) | 17 |
| Establishing a Network Connection (via Wireless LAN) | 19 |
| EasyMP.net Software | 21 |
| Software Operating Environment | 21 |
| Installing the Software | 23 |
| Uninstalling the Software | 24 |
| Using Input Devices | 25 |
| Remote Control | 25 |
| On-screen Keyboard | 26 |
| USB Devices | 27 |
| Startup and Shutdown of Functions | 28 |
| Startup from the Main Menu | 28 |
| Startup from Task Manager | 29 |
| User Registration and Data Management | 30 |
| User Types | 30 |
| Logon | 31 |
| Data Folder | 32 |

Contents

| | |
|---|----|
| Using the PC Card Slot | 33 |
| Inserting the Card | 33 |
| Removing the Card | 33 |
| Wireless LAN Card | 34 |
| Available Wireless LAN Cards | 34 |
| Hints on How to | 35 |
| Use PowerPoint for Presentation | 35 |
| Various Ways of Using the Projector | 36 |
| Integrated Projector Management | 40 |
| Index | 41 |

Functions and Features of EasyMP.net

A projector with EasyMP.net can provide various functions required for presentation by network connection. The following section provides typical application examples and available functions.

Projection by Network Connection

When the projector is used in class or in a conference room, the projector need not be connected directly to the local PC. If the projector is connected to the network, its EasyMP.net can process various PC and projector operations in the on-line mode.

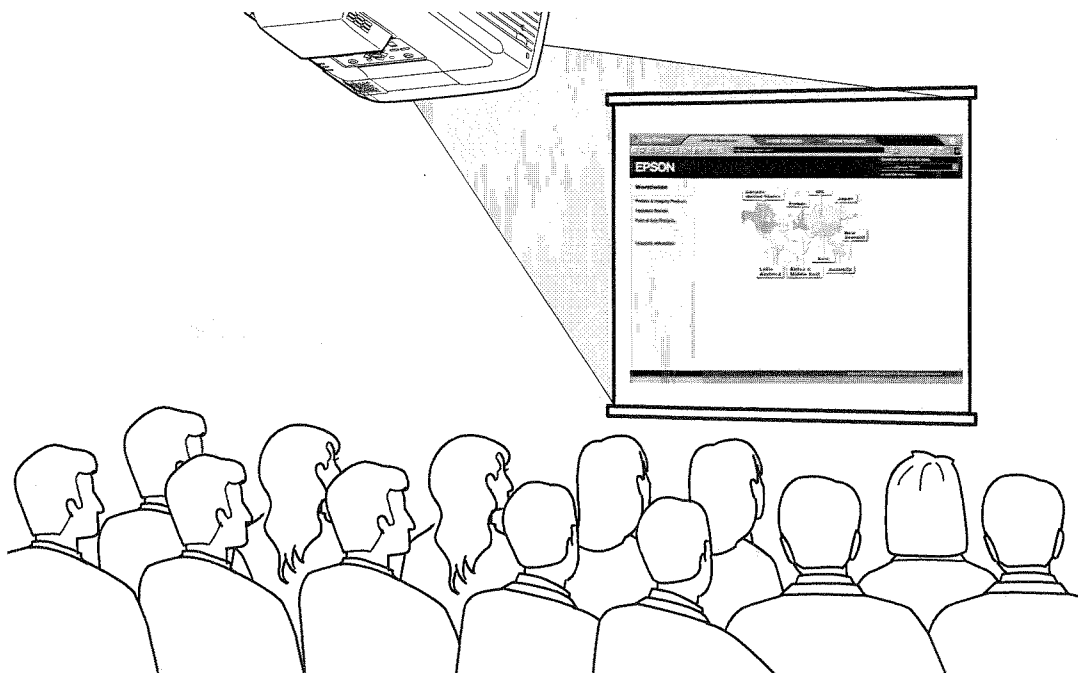
Quick Start-up of Presentations via the Network

If a network environment has been established, you skip the preparation such as data copy in a notebook PC or in the PC dedicated to the projector. You can start data projection on a screen immediately.

Projection of Network Contents Using the Web Browser

EasyBrowser allows you to connect the projector to the Internet and project the Web page on a screen. And since you can display the page you need, you can also play back the motion picture contents available on the Internet. (Java applet pages cannot be displayed.) If you have saved the contents data in the Web server, you can present it without using the notebook PC. And in addition you can utilize the real-time Internet information that is routinely updated.

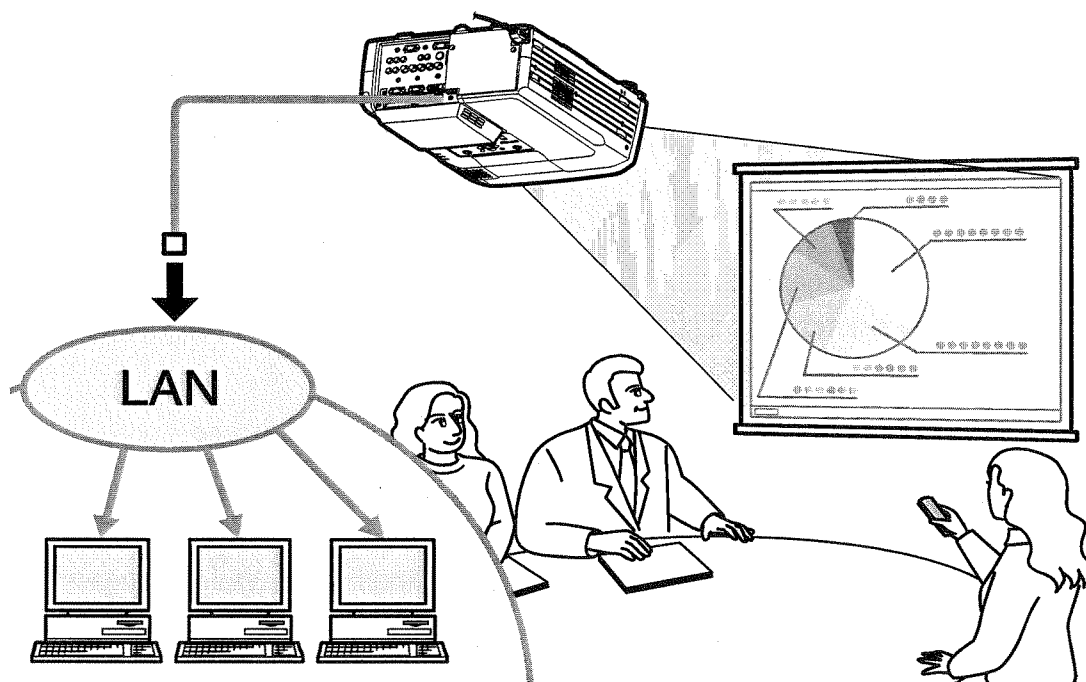
☛ "Displaying a Web page (EasyBrowser)" in the *EasyMP.net Operation Guide*



Projecting a File Residing on the Network

EasyFile allows you to open a file residing on the network and to project it on a screen. Also, you can copy, move and delete a file on the PC.

☛ "Copying/Moving/Deleting/Executing a File (EasyFile)" in the *EasyMP.net Operation Guide*



Using the Projector via Wireless LAN

If you insert a wireless LAN card into the PC card slot of the projector, you can connect the projector to the network via the wireless LAN system.

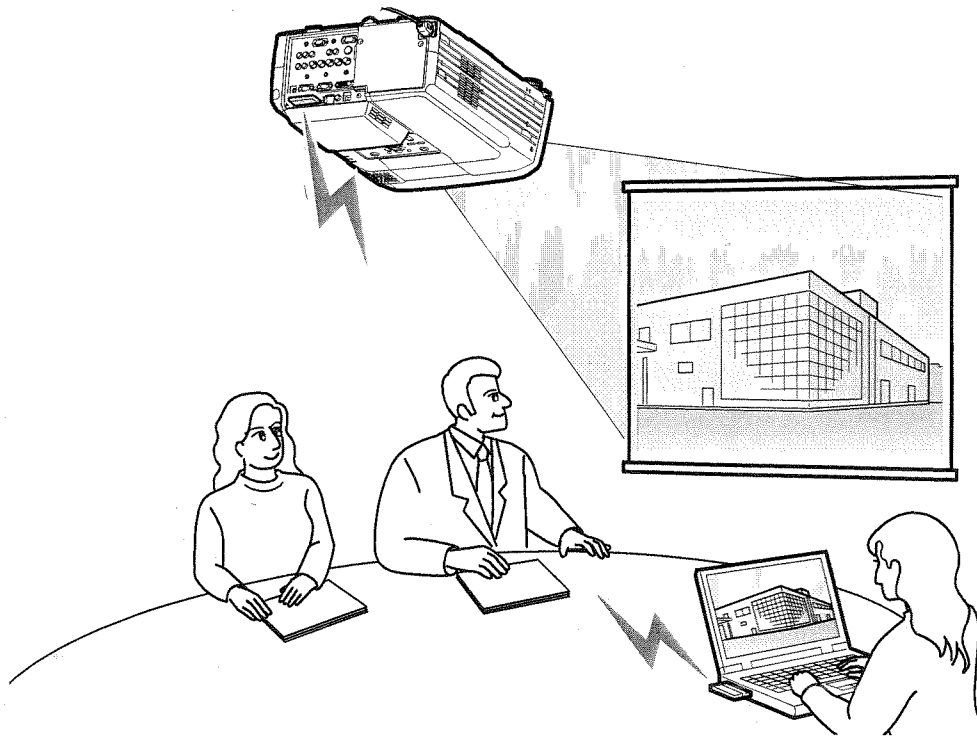
Projecting a PC File Image Using the Wireless LAN

If EasyMP.net is not installed in the projector, you must connect the PC to the projector directly, using a signal cable when projecting a PC file image on a screen. However, if EasyMP.net has been installed in the projector, you can connect the projector to the network and project an image shown on the network PC onto a screen using Network Screen.

If you connect a notebook PC to the projector via the wireless LAN system, you can project the notebook PC's data in a conference room.

The next presenter can continue without resetting the PC's connection.

● "Projecting PC Images (Network Screen)" in the *EasyMP.net Operation Guide*



Operating the PC from the Projector

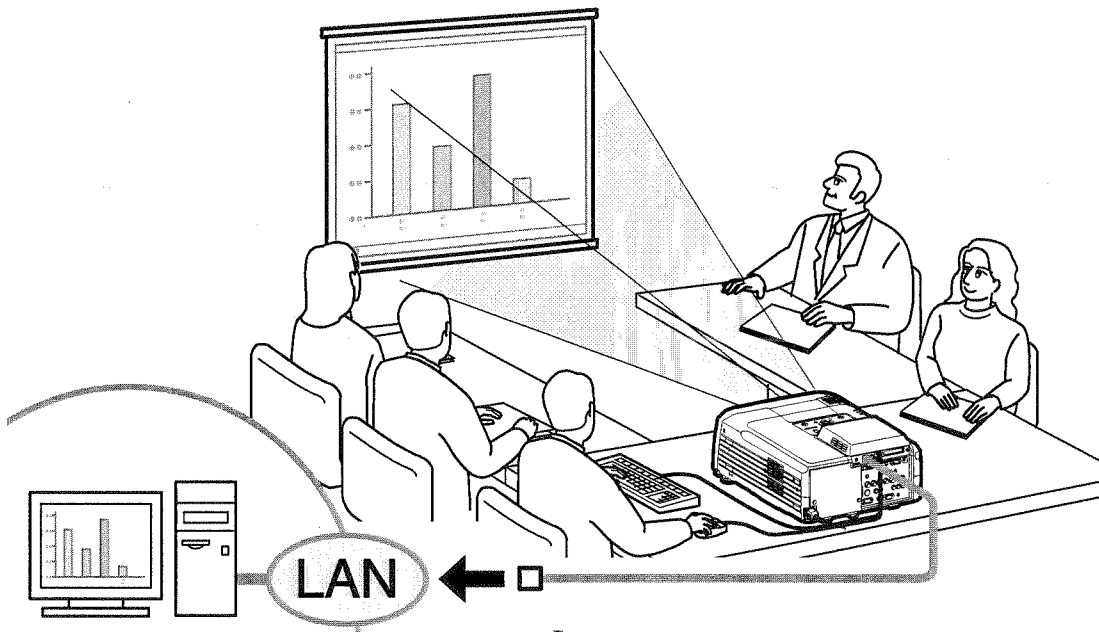
Using the Remote Desktop functions of EasyMP.net, you can easily connect your projector to a network PC running on Windows XP Professional.

☛ "Operating a Network PC (Remote Desktop)" in the *EasyMP.net Operation Guide*

Projection by the Network PC

Remote Desktop allows you to control a PC running on Windows XP Professional from the projector by remote control operations. You can start the software and project any file image on a screen. You can access all the software and files on the PC, so you can start projection in a conference room without a notebook PC.

| | Remote Desktop | Network Screen |
|--------------|--|---|
| Function | Controls a PC from a remote projector. | Operates the PC directly. |
| Available PC | Allows you to operate a network PC running on Windows XP Professional. | <ul style="list-style-type: none">• Allows you to project a file image from the network PC running on Windows 98/98SE/Me/2000/XP.• The EMP NS Connection software must be installed in the PC. |




Presentation

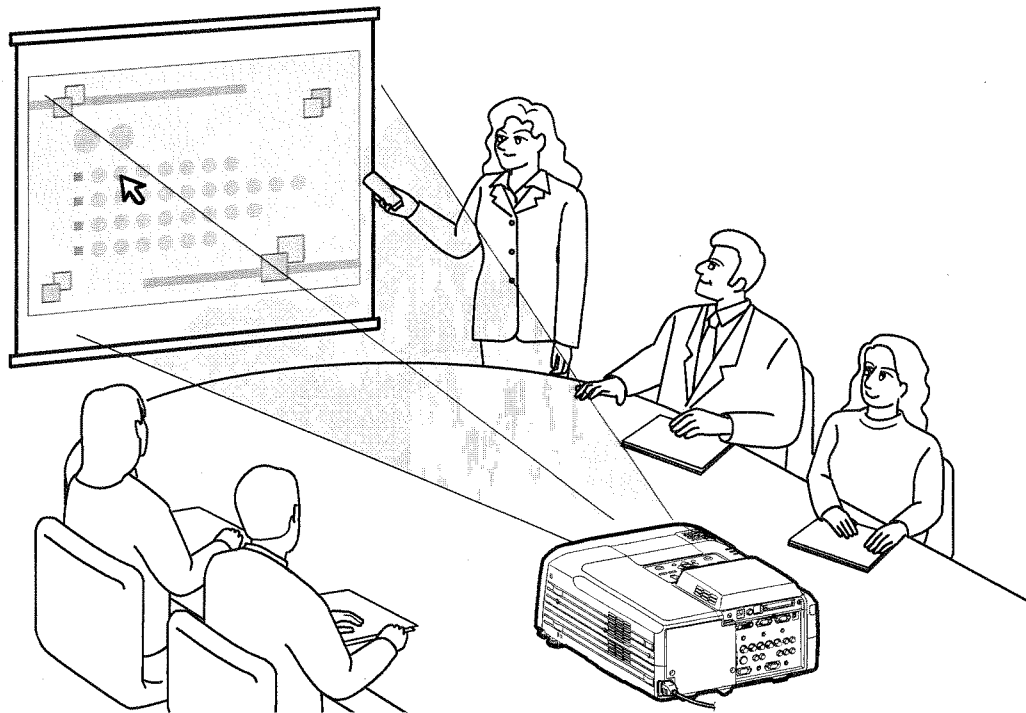
EasyMP.net supports various types of presentation using Microsoft PowerPoint.

Presentation without Using the PC


You can install the PowerPoint program in this projector, and run PowerPoint on the projector. In addition you can save the PowerPoint data in HTML format and display it using EasyBrowser.

You can project the PowerPoint data in a conference room by using this projector only (without PC).


"Use PowerPoint for Presentation"  p.35



Reporting an Error Using the Mail Notification Function

If the projector connected to the network has failed or entered into alarm status, EasyMP.net can report this to a PC by sending an e-mail message to a preset IP address  .

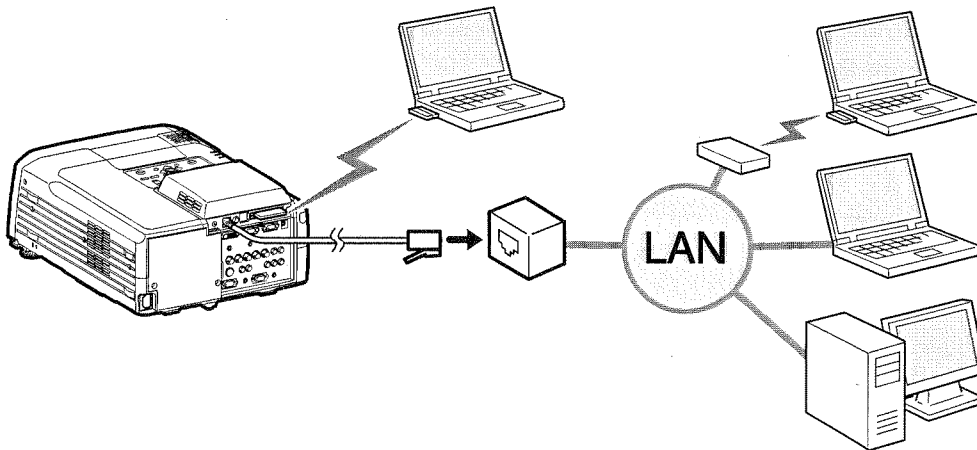
An error in the projector can be known at a distant place when the Mail Notification function is used.

 "Establishing the Mail Notification Function" in "Setting EasyMP.net Options (Easy Configuration)" in the *EasyMP.net Operation Guide*

Network Connection

The projector can be used in a LAN system once a network connection has been established. The connection can be established by means of EasyConfiguration. Network configuration examples are given in the "Examples Network Connection Configurations" section of the *EasyMP.net Operation Guide*.

When connecting the projector to the network using a network cable, plug the network cable into the Network port of the projector, and establish a network connection using EasyConfiguration (☛ p.17).



When connecting the projector to the network via the wireless LAN, plug the wireless LAN card into the PC card slot of the projector (☛ p.33) and establish a network connection using EasyConfiguration (☛ p.19)

Setting up EasyMP.net

EasyMP.net will be available once the system date and time and the network parameters have been set by means of EasyConfiguration.

The following section explains the standard system setup using the remote control unit supplied with the projector. Also, the mouse and keyboard keys can be used for easier operation.

(☛ p.25) Instructions on the operation of the remote control, mouse and keyboard



CAUTION

Do not unplug the power cable when EasyMP.net is running (especially when the screen is switched on or data is being read from the memory card).

If you do, the system hardware may fail and the EasyMP.net screen may not appear.

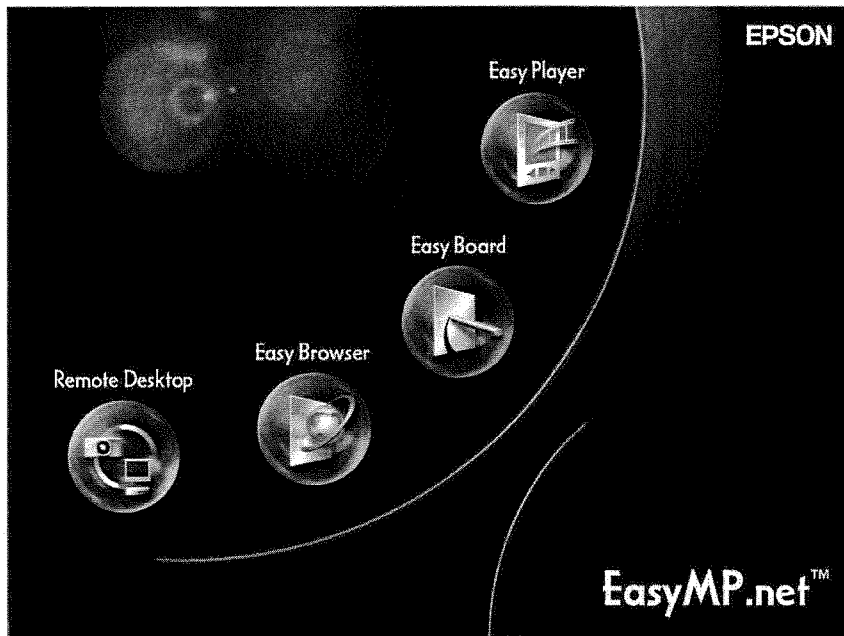
Setting the Date and Time

When the projector is turned on, the following screen appears.



TIP

EasyMP.net will be ready for use approximately 1 minute and 30 seconds after the projector is turned on.



PROCEDURE

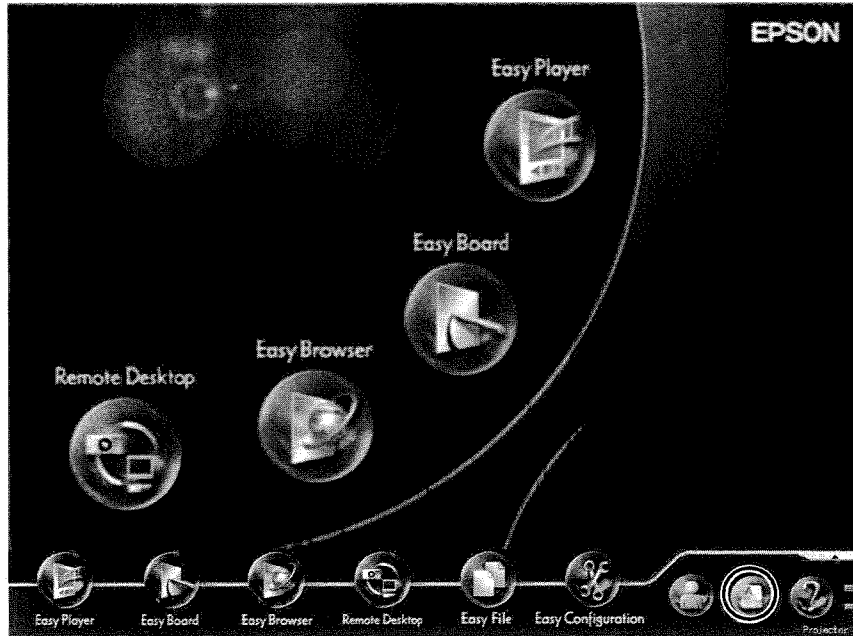
- 1 Move the mouse pointer (☞) to the bottom of the screen using the (⏪) button on the remote control.

The Task Manager (☛ p.29) will appear.

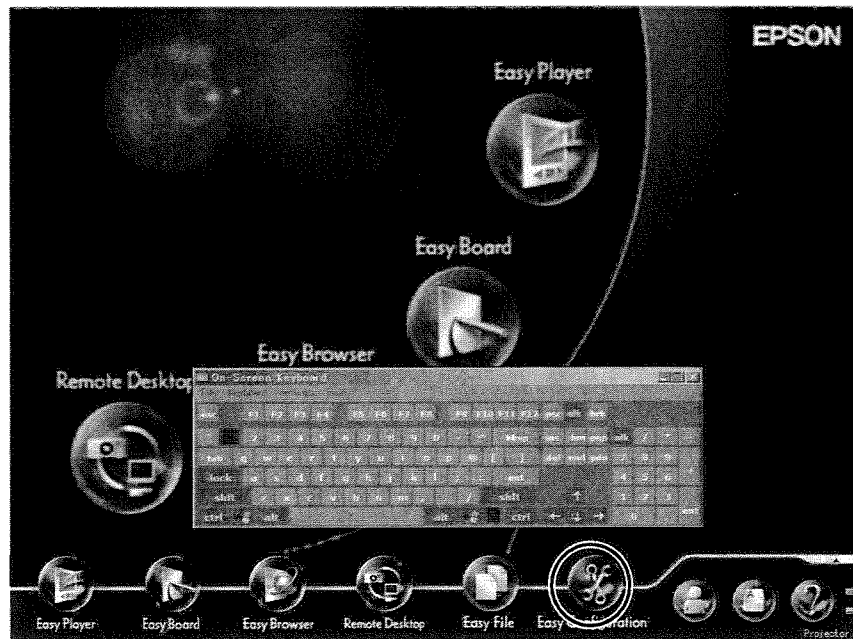
Setting up EasyMP.net

- 2 From the Task Manager screen, select the "Screen Keyboard" and press the [Enter] button on the remote control.

The on-screen keyboard (p.26) will appear.

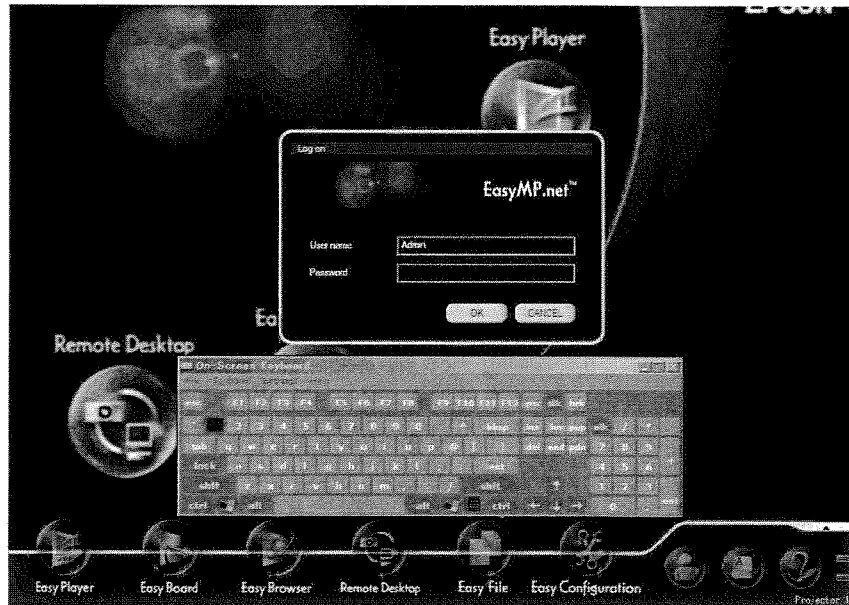


- 3 From the Task Manager, select the "EasyConfiguration" and press the [Enter] button on the remote control.

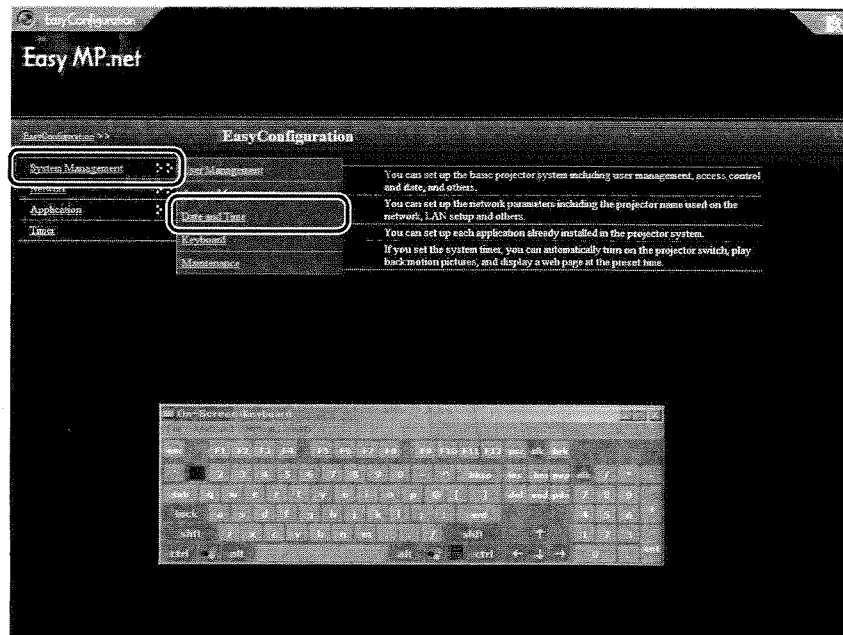


If the "Please log on as the administrator" message appears, select "OK" and press the [Enter] button. The Logon dialog box will appear.

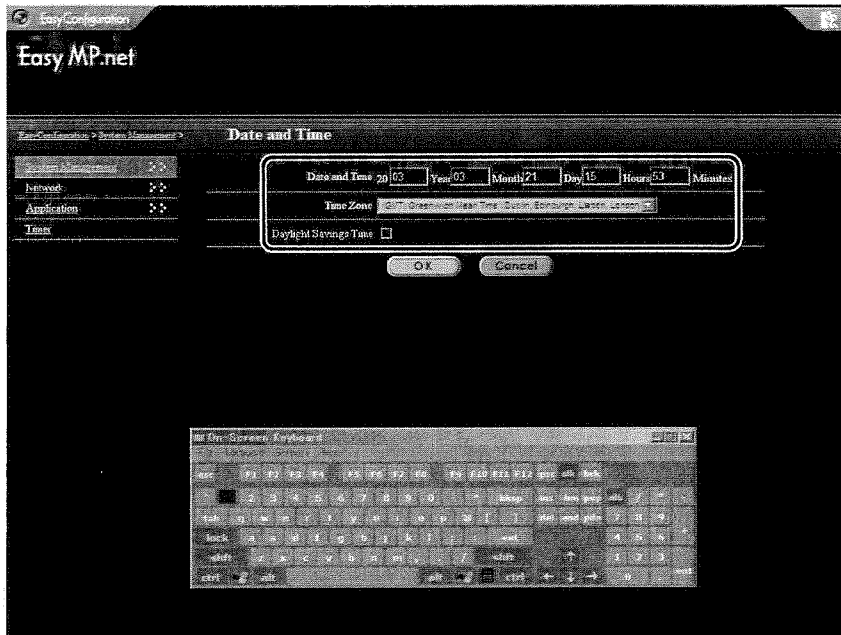
- 4 Enter the Administrator ID and password from the on-screen keyboard. The user ID is Admin. No password is set in the initial system.



- 5 Select "OK" and press the [Enter] button. The EasyConfiguration screen will appear.
- 6 Select "System Management" - "Date and Time", and press the [Enter] button.



7 Set the time of the projector clock.




| | |
|-----------------------|---|
| Year | Set the current calendar date and time. The hour can be set from 0 to 23 (a 24-hour system). |
| Month | |
| Day | |
| Hours | |
| Minutes | |
| Time Zone | Choose an area. |
| Daylight Savings Time | U.S.A summer time (optional: you cannot set the summer time of another country). |

8 Select "OK" and press the [Enter] button.

To cancel setup, select "Cancel" and press the [Enter] button.

The date and time have been set.

Next, proceed to "Renaming a Projector." (When you need to cancel the setup and close EasyConfiguration, select  in the upper right corner and press the [Enter] button. When you wish to start another setup, select the left-hand side menu and press [Enter] button.)