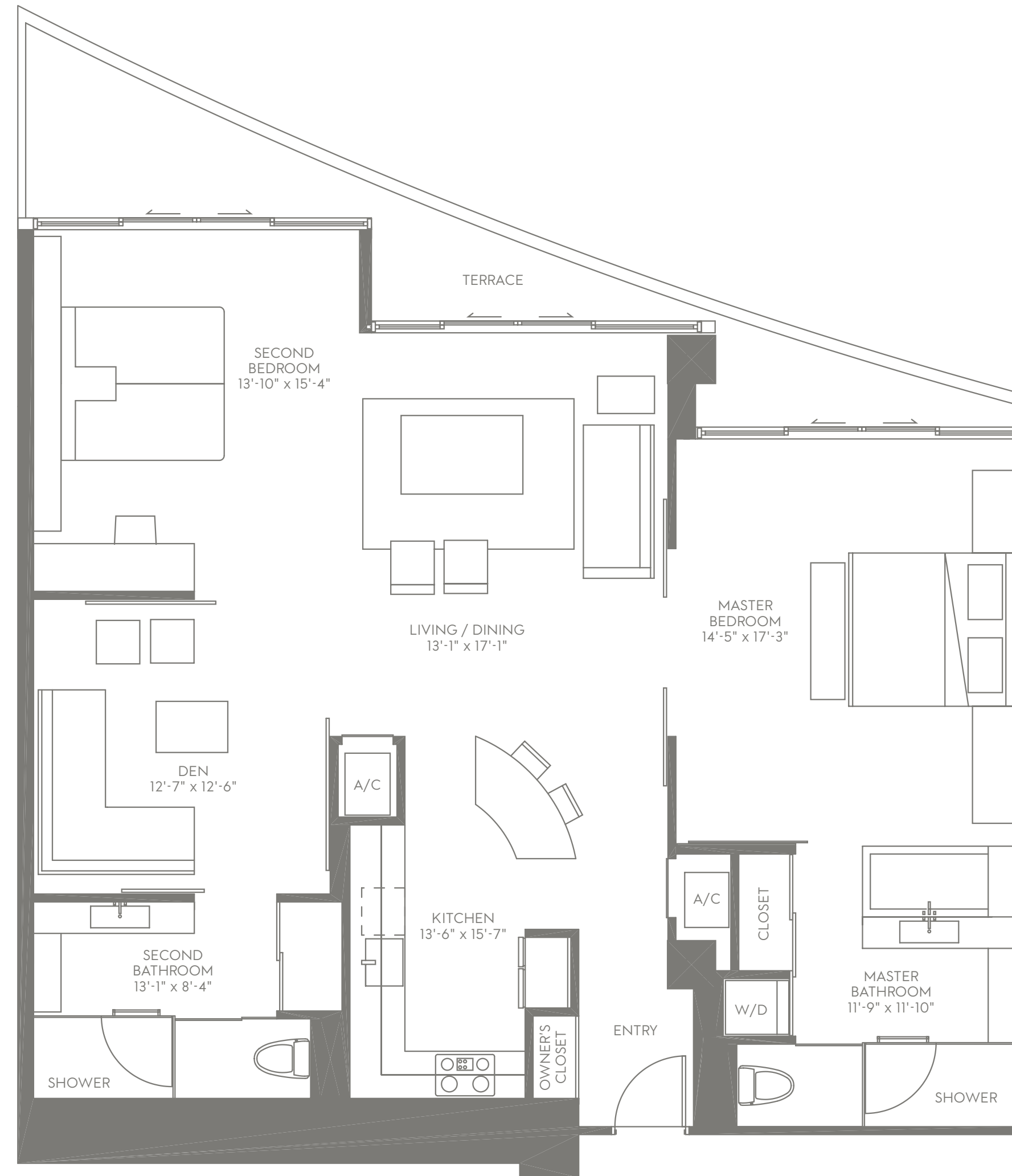
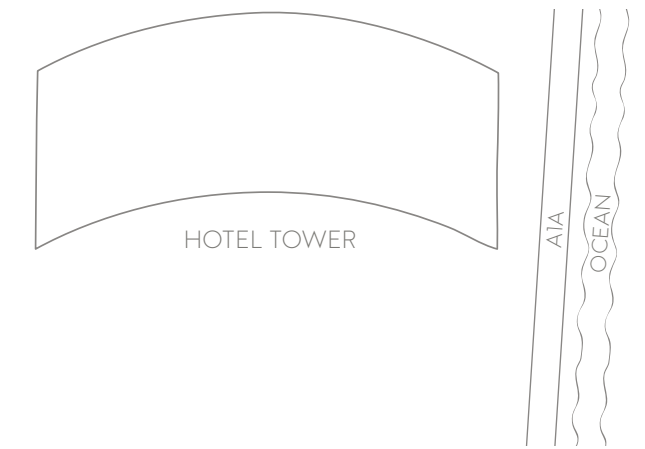
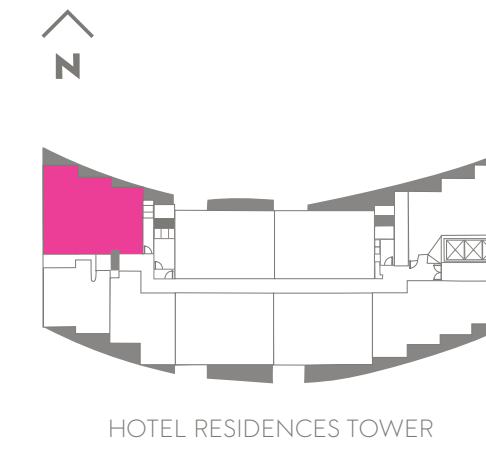


# HAVEN

## 2 BEDROOM / 2 BATH

Discover the best of both worlds in this two-bedroom residence — enjoy amazing views of the Atlantic Ocean or the Intracoastal Waterways. Breeze from the roomy kitchen into the custom-designed living room, cozy up in a separate family room or luxuriate with a steamy soak in the extra-spacious master bathroom.



### NORTH AND EAST VIEW

LIVING AREA 1,463 SQ. FT. (136 m<sup>2</sup>)  
 TERRACE 274 SQ. FT. (16 m<sup>2</sup>)  
**TOTAL 1,637 SQ. FT. (152 m<sup>2</sup>)**



A Y-GROUP PROJECT. THE RESIDENCES AT W FORT LAUDERDALE ARE NOT OWNED, DEVELOPED OR SOLD BY STARWOOD HOTELS & RESORTS WORLDWIDE, INC., OR ITS AFFILIATES. Y-GROUP USES THE W<sup>®</sup> TRADEMARK AND TRADE NAME UNDER A LICENSE FROM STARWOOD HOTELS & RESORTS WORLDWIDE, INC. TO CAPRI RESORTS, LLC AND CAPRI HOTEL, LLC. THIS IS NOT AN OFFER TO SELL OR SOLICITATION OF OFFERS TO BUY, NOR IS ANY OFFER OR SOLICITATION MADE WHERE PROHIBITED BY LAW. THE STATEMENTS SET FORTH HEREIN ARE SUMMARY IN NATURE AND SHOULD NOT BE RELIED UPON. A PROSPECTIVE PURCHASER SHOULD REFER TO THE ENTIRE SET OF DOCUMENTS PROVIDED BY THE Y-GROUP AND SHOULD SEEK COMPETENT LEGAL ADVICE IN CONNECTION THEREWITH. EQUAL HOUSING OPPORTUNITY.



FORT LAUDERDALE  
 THE RESIDENCES