



888-279-4227



[HOME](#) [EQUIPMENT »](#) [FEATURES »](#) [APPLICATIONS »](#) [WHY CAS? »](#) [CONTACT »](#)

::::
For

Sale ::::



CAS AT-6 - \$149,500

Year:2008
Make:CAS
Model: AT-6
Options: Radio Remote, Blade, Vibrator
Engine: CAT 202 HP
Hours: 2,500 hours

Sales Price: \$149,500



CAS ST16 - **SOLD**

Year:-
Make:CAS
Model: ST16
Options: Radio Remote, PowerTarp, Vibrator, Water System, HS 9000 High Performance Slings System
Chassis: 379 Peterbilt

Miles: 680,619
Engine: C-15 CAT
Transmission: 13-speed
Axle: 40 rears 373 gear ratio
Slinger Hours: 1390

Sales Price: \$109,000



2011 CAS ST16 - SOLD

Year:2011

Make:CAS

Model: ST16

Options: Radio Remote, PowerTarp, Vibrator, Water System, Aluminum Toolbox, HS 9000 High Performance Slinging System

Chassis: Year: 2007

Make: Freightliner

Model:

Miles: 19,000

Engine: Mercedes Benz

Transmission: Eaton Fuller 11-speed

Axle: front: 14,600 / 18,000 lb suspension driver: 46,000

GVW: 57,500

Vehicle WT: 29,080

Sales Price: \$165,000



2010 CAS ST20 – \$195,000

Year:2010

Make:CAS

Model: ST20

Options: Radio Remote, Radio Remote Drive, Scratcher/PowerTarp, Vibrator, Water System with hose, Aluminum Toolbox, Asphalt Heat Package, Stainless Advertising Panel, Stainless Six Axle Fender Package

Chassis: Year: 2008

Make:Kenworth

Model: W900L

Miles: 112,000

Engine: Cummins ISX 550HP

Transmission: Eaton Fuller 18-speed

Axle: F/14, 6 R/46

GVW: 71,500
Vehicle WT: 35,500

MORE PHOTOS COMING SOON!

Sales Price: \$195,000



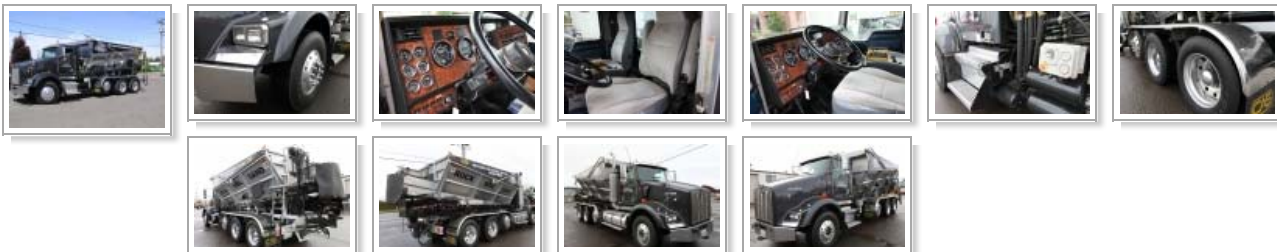
2007 CAS ST-16 – \$135,000

Year:2007
Make:CAS
Model:ST-16
Serial: 60035
Options: Radio Remote, Remote Drive, Vibrator, PowerTarp, Water System, Stainless fenders, High Performance Slinging System

Chassis: Year: 2001
Make:Kenworth
Model:T800
Miles: 626,891
Hours: 19,718
VIN: 1XKDDROCO1J872993
Engine: Detroit 500 HP
Transmission: RTL0169188 18-speed
Truck Weight: 56,000

Sales Price: \$135,000

[Download Brochure](#)



2004 CAS TP-16 – SOLD

Year:2004



Make: CAS
Model: TP-16
Serial:
Options: Fully Remote Controlled Truck and Slinger, Gated system.
Chassis: Year: 2004
Make: Kenworth
Model: T800B
Miles: 79,405
Hours:

VIN:
Engine: CAT C-12 430HP
Transmission: Eaton Fuller 8LL
Truck Weight:

Sales Price: \$109,000

[Download Brochure](#)



LIKE NEW 2006 CAS TP-18 – SOLD

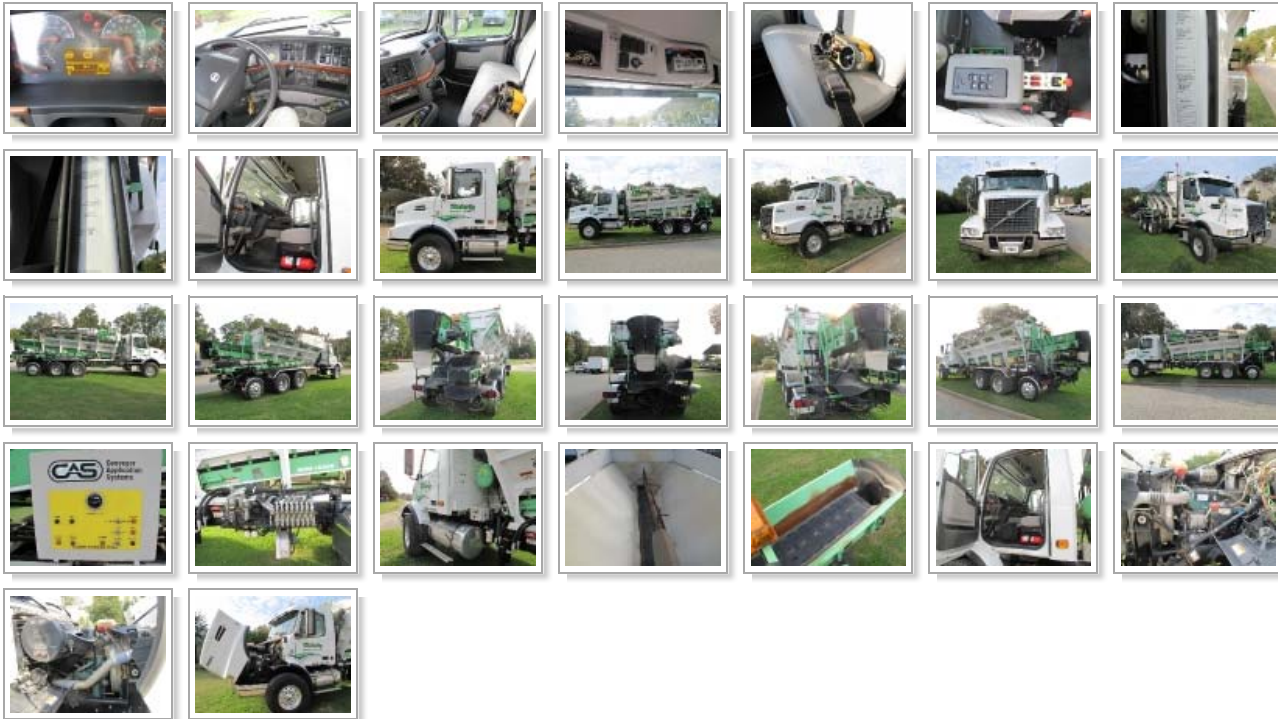
Year: 2006
Make: CAS
Model: TP-18
Serial:
Options: Lights, Power Windows, Radio and Tape Player, Auto Tarp, CAS Body, Body Model TP-18WT, Air Ride, Scratcher System, Remote Radio (backup),

Transmitter, Hydraulic Super Shield, HD Poly-Plastic Interior Bed Liner, Remote Drive System Power Operated, Dust Suppression System, Cleated Belt for Conveyor, Fenders, Tool Box, Wide Track Feed System, Hopper Box, Backup Camera

Chassis: Year: 2006
Make: Volvo

Model:VHD 2100
Miles:5,793
Hours:
VIN:VKC9GH56N445135
Engine:Volvo VHD 2100 RPM, VE D12-435HP
Transmission: Allison 450 Trans., 6-speed
Axle Weights:

Sales Price: \$165,500



2006 CAS ST-20 – SOLD

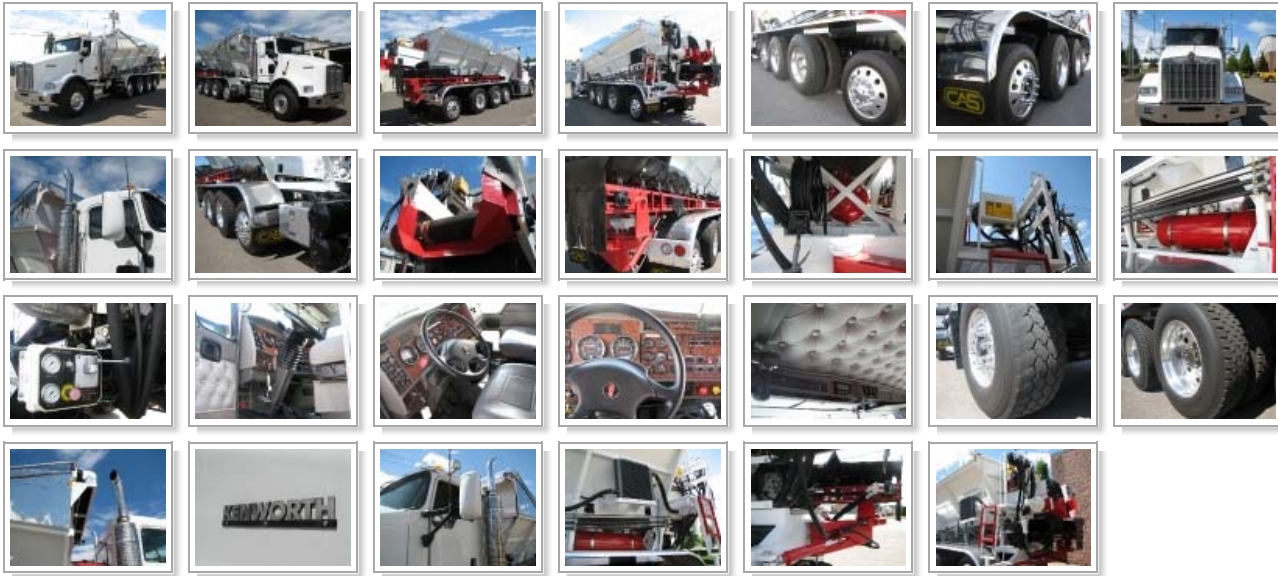
Year:2006
Make:CAS
Model:ST-20
Serial:
Options:Radio Control, Remote Chassis Drive, Power Tarp, Water/Dust System, Scratcher System

Chassis: Year: 2006
Make:Kenworth
Model:T800
Miles:34,600
Hours:1949
VIN:INKDXUEX26R121853
Engine:CAT C-13 430 hp
Transmission:Eaton 8LL

Axle Weights: 4 axles, Front – [20,000], Pusher – [12,000], Driver – [40,000], Tag – [12,000]

Sales Price: \$185,000

[More info at Rexius Equipment](#)



2005 CAS TP-18WT – SOLD

Year: 2005
Make: CAS
Model: TP-18wt
Serial:
Options:
Chassis: Year: 2005

Make: Kenworth
Model: T800B
Miles: 138,066
Hours: 7471
VIN: 1NKDXUEX95R096836
Engine: CAT C-13

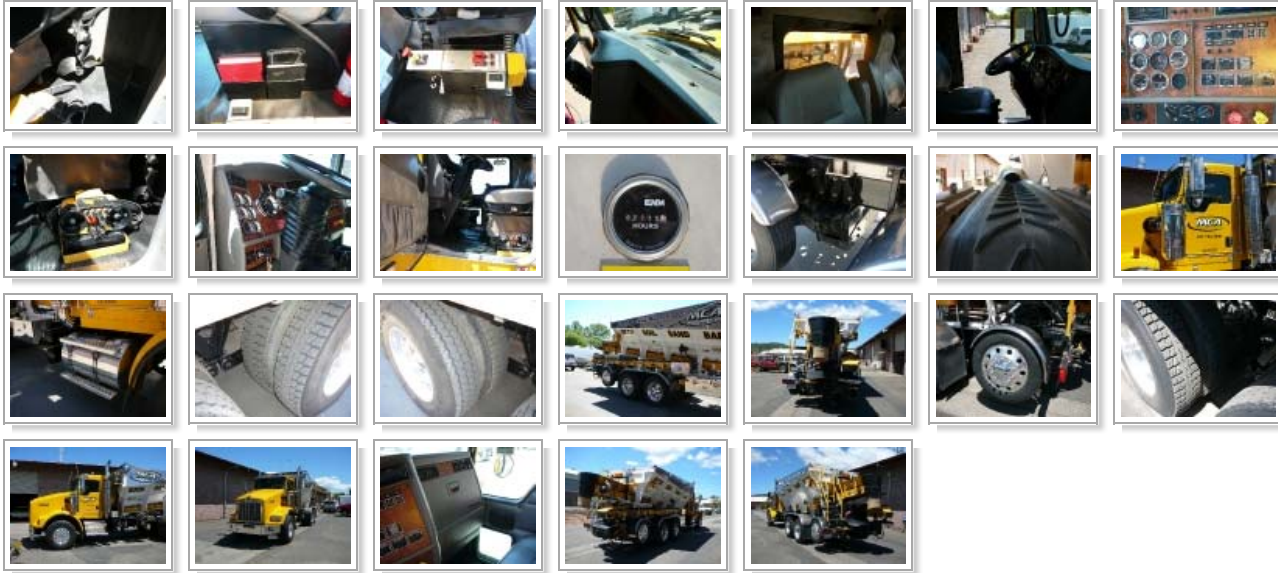
Transmission: Fuller RTO 16908LL 10-speed

Axle Weights: 4 axles, Front – [20,000], Pusher – [], Driver – [40,000], Tag – [13,200]

Summary: Radio Remote Control, Remote Drive Systems, Spare Radio Transmitter, Power Operated Tarp, Water System, Aluminum Tool Box, Vibrator, Conveyor Shield, Stainless Steel Advertising Panel, Fender Option – Aluminum 2 Rear Axles. New PC belt, new super shield belt, new super shield bearings, 2 new radio batteries, up graded Placing conveyor pulleys for farther distance, new poly belts, hydro trans rebuilt 2 yrs ago-new clutches, bearings chains. Custom cover for Placing Conveyor Belt.

Sales Price: \$135,000

[Download Brochure](#)



2007 CAS ST20 – SOLD

Year: 2007

Make: CAS

Model: ST20

Serial:

Options: Radio Remote Control System, Remote Drive System w/ Auto Remote

Drive and 7-point safety system, Vibrator, Aluminum Tool Box, Power Operated Tarp System, Dust Suppression System with Hose Reel, Fenders – Stainless for 4 rear axles, Stainless Steel Advertising Panel top of Hopper, High Performance Slings System, Powered Super Shield Upgrade, no warranty

Chassis:

Year: 2007

Make: Kenworth

Model: T800B

Miles: 51,775

Hours: 3385

VIN: INKDX4EX37R195817

Engine: Cummins Model # ISX 475

Transmission: Eaton 10-speed

Axle Weights: Front – 20,000, Drivers – 40,000, Tag – 13,200

Tire Size: Front – 425 65R22.5, Drivers – 11R24.5, Tag – 225-70R22.5

Suspension: Air

Wheels: Aluminum

Tire Tread: 60-70%

Wheel Base: 235" (320" with tag)

GW: Empty – 32,000, Loaded – 65,000

Summary: Radio Remote Control System, Remote Drive System w/ Auto Remote Drive and 7-point safety system, Vibrator, Aluminum Tool Box, Power Operated Tarp System, Dust Suppression System with Hose Reel, Fenders – Stainless for 4 rear axles, Stainless Steel Advertising Panel top of Hopper, High Performance Slinging System, Powered Super Shield Upgrade, no warranty.

Sales Price: \$184,500

[Download Brochure](#)



2008 RL34 – \$57,000 - SOLD

Year: 2008

Details: 67 HP Yanmar Liquid Cooled Diesel Engine, 36" Feed Belt, Cross-Feed Hopper Conveyors, Tow Height: 10'6", Extended Hopper Width: 10'6", Extended Clearance Height: 13'8", Overall Length: 30', Tow Weight: 8,750 lbs, Tow Length: 28', Production: 4-6 tons of 1" rock per minute*, 6-10 yards of organic material per minute*, serial #: HG268Y003, Manufacture date: 8-08, only 65.5 hours of use.

Chassis: NA

Sales Price: \$57,000

[Download Brochure](#)





2008 CAS ST20 – \$98,000 - SOLD

Year: 2008

Make: CAS

Model: ST20 Box

Summary: Extended box – 1 foot taller, Vibrator, Water System, Radio Controlled, High Performance Slings System, Stainless Steel Advertising Panels, Serial #: 80083.

[Download Brochure](#)



2008 CAS ST14 - SOLD

Year: 2008

Make: CAS

Model: ST14 Box

Summary: ST14 box, Vibrator, Water System, Radio Controlled, High Performance Slings System, Stainless Steel Advertising Panels, Serial #: 80103.

[Download Brochure](#)



1999 CAD 18 – \$84,500

Year: 1999

Make: CAD



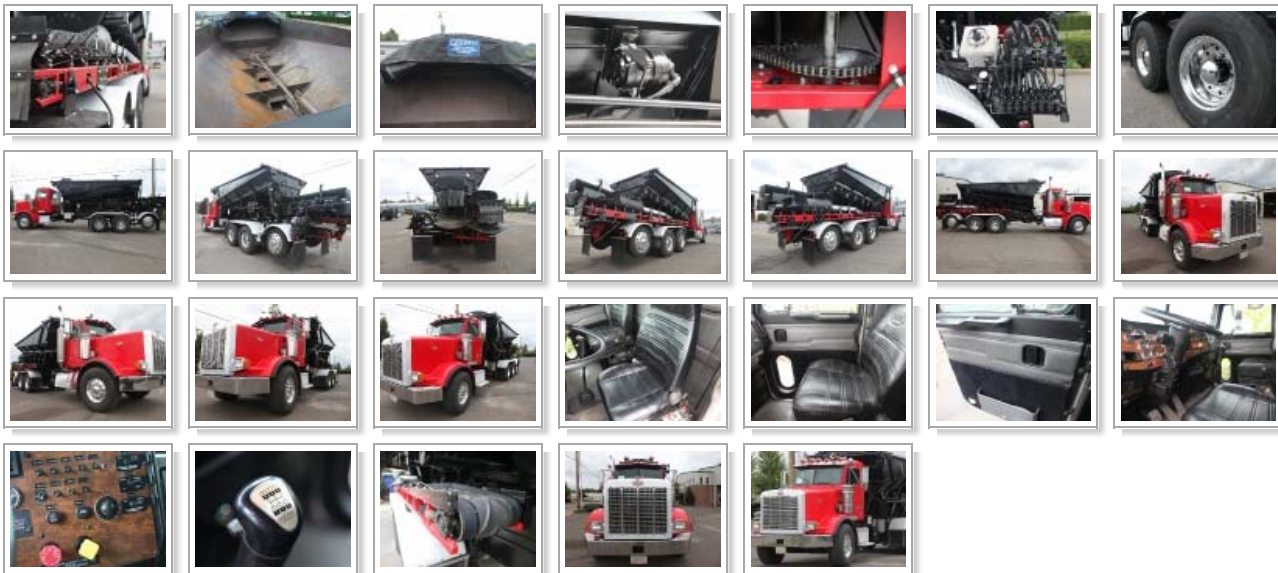
Model: 18

Details: 1999 Peterbilt 357, 95,072 miles, 4,660 hours, 1NPAXAOX6XD4730368, CAT 3306 Engine, Eaton 10-Speed, Air Suspension, Aluminum Wheels, 230" wheel base, Chassis Ground Drive Steering, operated at rear of truck. Gated Box, Electric Tarp, Scratcher.

Summary: This is a nice looking unit. It is the old style gated box, but has been kept in good condition. The truck has less than 100,000 miles and runs great. The truck can be moved around and steered while standing at the back of truck. This makes it very handy to move the truck without climbing in and out of the cab.

As with all of this style of unit, the range is limited to 60 feet or so and the products that work best are 1" and smaller gravel or sand. But for most jobs around constructions sites, this truck will work just fine for many more years.

[Download Brochure](#)



2005 AT6 - SOLD

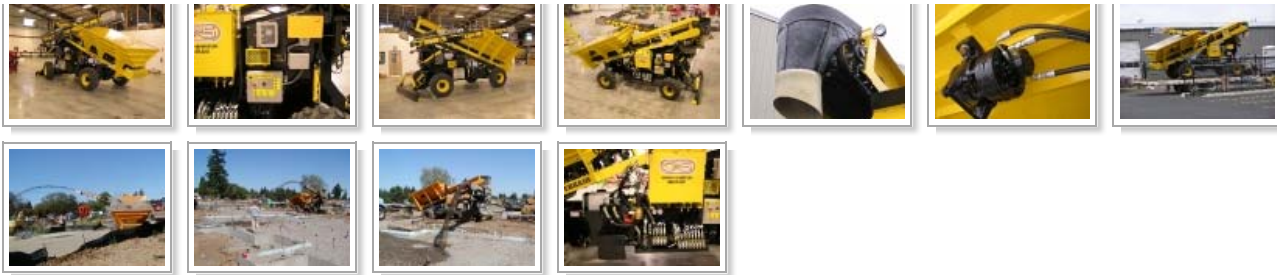
Year: 2005

Make: CAS

Model: AT6

Details: Remote Radio, 2000 Hrs, Extra Radio Transmitter, Pressure Washer, Vibrator, Blade, 84 HP Cat Engine

[Download Brochure](#)



The majority of CAS equipment is built upon order and we maintain a stock of new chassis ready to build. In addition, we keep a few completed units in stock for immediate delivery. Take a look at our [Equipment](#) page for our new built to order machines. Whether we build your CAS with a new or used chassis, or even use a chassis you provide, we will be glad to give you a firm delivery date upon a confirmed order.

Who We Are

Conveyor Application Systems, LLC is a wholly owned subsidiary of the Rexus Corporation. We manufacture and sell specialized placing and spreading equipment for various applications within the construction industry. Our high speed conveyor systems allow for fast, efficient, and cost effective placement of various materials like rock, sand, dirt, mulch, and soil almost wherever you want it. From Landscapers, to contractors, to excavators, or someone looking to start a new business, CAS has the equipment for you.

Please take a look around at our website, and feel free to contact us if you have any questions. We do things different, so come experience the "CAS Difference".

- [SITMAP](#)
- [FAQ](#)
- [GO TO REXIUSEQUIPMENT.COM](#)

Conveyor Application Systems

Corporate Headquarters:
1275 Bailey Hill Road
Eugene, OR 97402

Toll Free: 888-279-4227
Office: (541) 463-9451
Fax: (541) 463-9713

[CONTACT US](#)

tb_pathTolImage =

"http://cas-equipment.com/wp-includes/js/thickbox/loadingAnimation.gif";tb_closeImage = "http://cas-equipment.com/wp-includes/js/thickbox/tb-close.png";