

GUARANTEED ANALYSIS

Crude Protein, minimum	26.00%
Crude Fat, minimum	0.50%
Crude Fiber, maximum	0.15%
Vitamin A, minimum	400,000 IU/lb
Vitamin D3, minimum	100,000 IU/lb
Vitamin E, minimum	1,200 IU/lb
Total Lactic Acid Bacteria	4.8 million CFU per oz
(from <i>Bacillus subtilis</i> , <i>Lactobacillus acidophilus</i> , <i>Lactobacillus lactis</i> , <i>Lactobacillus casei</i> , <i>Streptococcus diacetylactis</i> , <i>Bifidobacterium bifidum</i>)	

INGREDIENTS

Dried Whey, Porcine Plasma, Glucose, Freeze-dried Extract of Allium sativum, Inulin, Vitamin A Supplement, Vitamin D3 Supplement, Vitamin E Supplement, Vitamin B12 Supplement, Thiamine Mononitrate, Ascorbic Acid, Biotin, Riboflavin, d-Calcium Pantothenate, Nicacin Supplement, Choline Chloride, Menadione Sodium Bisulfite Complex (source of Vitamin K Activity), Folic Acid, Pyridoxine Hydrochloride, Magnesium Sulfate, Zinc Sulfate, Manganese Sulfate, Copper Sulfate, Cobalt Sulfate, Iron Sulfate, Sodium Selenite, Calcium Iodate, Mineral Oil, Maltodextrin, Sulfate, Sodium Citrate, Sodium Chloride, Glycine, Potassium Chloride, Glucose, Sodium Citrate, Sodium Chloride, Sodium Aluminosilicate, Freeze-Calcium Lactate, Monosodium Glutamate, Sodium Aluminosilicate, Freeze-dried Culture of *Bacillus subtilis*, Freeze-dried Culture of *Bacillus licheniformis*, Freeze-dried Culture of *Bacillus coagulans*, Dried *Lactobacillus acidophilus* Fermentation Product, Dried *Lactobacillus lactis* Fermentation Product, Dried *Lactobacillus casei* Fermentation Product, Dried *Streptococcus diacetylactis* Fermentation Product, Dried *Bifidobacterium bifidum* Fermentation Product, Natural and Artificial Flavors and Artificial Coloring (FD & C Red No. 40).

#34920826



PLAS/MAGIC

MILK FORTIFIER



Patent #5,785,990

The Cornerstone For Building A Successful Calf Management Program

The Plas/Magic Program
Calf Feeding Schedule

	Farm Condition	Days of Plas/Magic
<i>Home-raised Calves</i>	Excellent Good Fair	7-14 14-21 21-28
<i>Off-site Raising</i>	Excellent Good Fair	14-21 21-28 28-35

Mix & Feed Recommendations

Mix 1 ounce of Plas/Magic per 2 quarts of whole milk or milk replacer. Following colostrum feeding, feed twice daily to provide 2 ounces per calf per day.

Provides nutrients and 50,000 IU of Vitamin A, 12,500 IU of Vitamin D3 and 150 IU of Vitamin E per calf per day.
25 lbs of Plas/Magic provides 400 feedings.

Manufactured by

MERRICK'S, INC.

The Performance Leader in Baby Animal Nutrition

A Division of Merrick Animal Nutrition, Inc.

P. O. Box 620307

Middleton, WI 53562-0307 USA

© 1995

NET WT 5 lb (2.26 kg)

GUARANTEED ANALYSIS

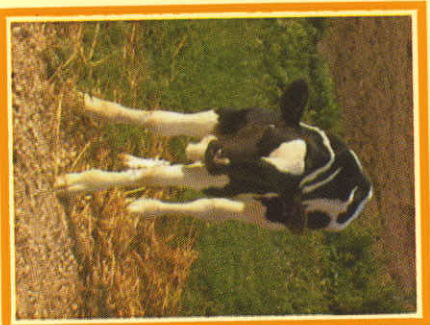
Crude Protein, minimum	26.00%
Crude Fat, minimum	0.50%
Crude Fiber, maximum	0.15%
Vitamin A, minimum	400,000 IU/lb
Vitamin D ₃ , minimum	100,000 IU/lb
Vitamin E, minimum	1200 IU/lb
Total Lactic Acid Bacteria	4.8 million CFU per oz
(from <i>Bacillus subtilis</i> , <i>Lactobacillus acidophilus</i> , <i>Lactobacillus lactis</i> , <i>Lactobacillus casei</i> , <i>Streptococcus diacetylactis</i> , <i>Bifidobacterium bifidum</i>)	

INGREDIENTS

Dried Whey, Porcine Plasma, Glucose, Freeze-dried Extract of *Allium sativum*, Inulin, Vitamin A Supplement, Vitamin D₃ Supplement, Vitamin E Supplement, Vitamin B₁₂ Supplement, Thiamine Mononitrate, Ascorbic Acid, Biotin, Riboflavin, d-Calcium Pantothenate, Niacin Supplement, Choline Chloride, Menadione Sodium Bisulfite Complex (source of Vitamin K Activity), Folic Acid, Pyridoxine Hydrochloride, Magnesium Sulfate, Zinc Sulfate, Manganese Sulfate, Copper Sulfate, Cobalt Sulfate, Iron Sulfate, Sodium Selenite, Calcium Iodate, Mineral Oil, Maltodextrin, Sulfate, Sodium Citrate, Sodium Chloride, Glycine, Potassium Chloride, Glucose, Sodium Monosodium Glutamate, Sodium Aluminosulfate, Freeze-dried Culture of *Bacillus subtilis*, Freeze-dried Culture of *Bacillus Calcium Lactate*, Monosodium Glutamate, Sodium Aluminosulfate, Freeze-dried Culture of *Bacillus subtilis*, Freeze-dried Culture of *Bacillus coagulans*, Dried *Lactobacillus acidophilus* Fermentation Product, Dried *Lactobacillus lactis* Fermentation Product, Dried *Lactobacillus casei* Fermentation Product, Dried *Streptococcus diacetylactis* Fermentation Product, Dried *Bifidobacterium bifidum* Fermentation Product, Natural and Artificial Flavors and Artificial Coloring (FD & C Red No. 40).

PLAS/MAGIC

MILK FORTIFIER



Patent #5,785,990

**The Cornerstone For Building A
Successful Calf Management Program**

The Plas/Magic Program Calf Feeding Schedule

	Farm Condition	Days of Plas/Magic
<i>Home-raised Calves</i>	Excellent Good Fair	7-14 14-21 21-28
<i>Off-site Raising</i>	Excellent Good Fair	14-21 21-28 28-35

Mix & Feed Recommendations

Mix 1 ounce of Plas/Magic per 2 quarts of whole milk or milkreplacer. Following colostrum feeding, feed twice daily to provide 2 ounces per calf per day.

➤ Provides nutrients and 50,000 IU of Vitamin A, 12,500 IU of Vitamin D₃ and 150 IU of Vitamin E per calf per day.
25 lbs of Plas/Magic provides 400 feedings.

★★★★★★

Manufactured by

MERRICK'S, INC.

The Performance Leader in Baby Animal Nutrition

A Division of Merrick Animal Nutrition, Inc.

P. O. Box 620307

Middleton, WI 53562-0307 USA

© 1995

NET WT 25 lb (11.33 kg)



#34920821