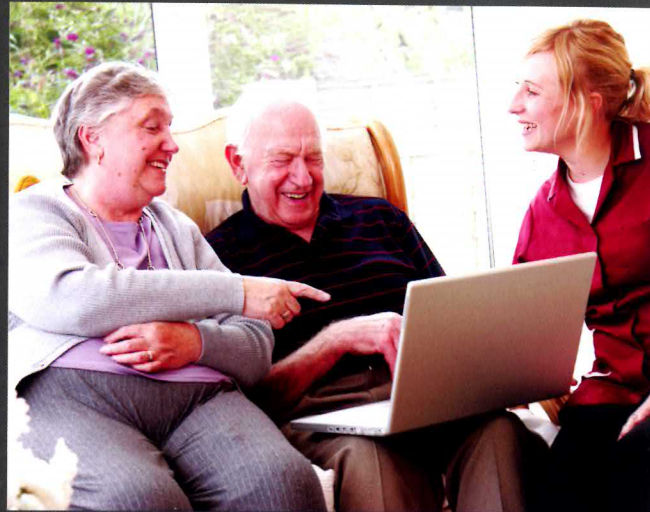


## N480 Bariatric

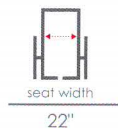
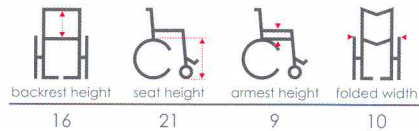
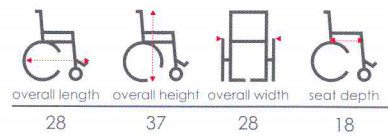


**Medicare Code**  
E1039

### Weight (lb)



### Dimensions (in)



### Features

- Detachable full arms.
- Convenient loop brake provides additional safety.
- Swing-away footrests with large aluminum footplates.
- 12" flat free rear wheel.
- Double crossbraces.
- 8" x 1" solid casters with HD fork and 1" stem.
- Latex free handgrips.

### Technical Specs

Length : 28"  
Width : 28"  
Height : 37"  
Back Height : 16"  
Seat Height : 21"  
Depth : 18"  
Armrest Height : 9"  
Depth, folded : 10"  
Max user weight : 450-lbs

### Options

Lap belt.  
Elevating legrests