

5/27/2021

Trademark Electronic Search System (TESS)



United States Patent and Trademark Office

[Home](#) | [Site Index](#) | [Search](#) | [FAQ](#) | [Glossary](#) | [Contacts](#) | [eBusiness](#) | [eBiz alerts](#) | [News](#)
[Trademarks](#) > [Trademark Electronic Search System \(TESS\)](#)

TESS was last updated on Thu May 27 03:32:23 EDT 2021

[TESS HOME](#) [NEW USER](#) [STRUCTURED](#) [FREE FORM](#) [BROWSE DICT](#) [SEARCH OG](#) [BOTTOM](#) [HELP](#) [PREV LIST](#) [CURR LIST](#) [NEXT LIST](#)  
[FIRST DOC](#) [PREV DOC](#) [NEXT DOC](#) [LAST DOC](#)
 Please logout when you are done to release system resources allocated for you.

 List At:  OR  to record:  **Record 29 out of 48**


---

[TSDR](#) [ASSIGN Status](#) [TTAB Status](#) ( Use the "Back" button of the Internet Browser to return to TESS)

# CleanSweep

**Word Mark** CLEANSWEEP

**Goods and Services** IC 007. US 013 019 021 023 031 034 035. G & S: Parts and accessories for agricultural seed planting machines, namely, a row cleaner down pressure system in the nature of linear actuators and a controller therefor for setting and adjusting the down pressure of the row cleaner planter attachment for clearing crop residue during planting. FIRST USE: 20100331. FIRST USE IN COMMERCE: 20100331

**Standard Characters Claimed**

**Mark Drawing Code** (4) STANDARD CHARACTER MARK

**Serial Number** 85558993

**Filing Date** March 2, 2012

**Current Basis** 1A

**Original Filing Basis** 1A

**Published for Opposition** August 14, 2012

**Registration Number** 4233252

**Registration Date** October 30, 2012

**Owner** (REGISTRANT) Precision Planting, Inc. CORPORATION ILLINOIS 23207 Townline Road Tremont ILLINOIS 61568

(LAST LISTED OWNER) Precision Planting, LLC. LIMITED LIABILITY COMPANY DELAWARE 2711 Centerville Road Suite 400 Wilmington DELAWARE 19808

5/27/2021

Trademark Electronic Search System (TESS)

**Assignment Recorded** ASSIGNMENT RECORDED  
**Attorney of Record** Jeffrey S. Ellsworth  
**Prior Registrations** 3446283;3606668;3842216  
**Type of Mark** TRADEMARK  
**Register** PRINCIPAL  
**Affidavit Text** SECT 15. SECT 8 (6-YR).  
**Live/Dead Indicator** LIVE

---

<a href="#">TESS HOME</a>	<a href="#">NEW USER</a>	<a href="#">STRUCTURED</a>	<a href="#">FREE FORM</a>	<a href="#">BROWSE DICT</a>	<a href="#">SEARCH OG</a>	<a href="#">TOP</a>	<a href="#">HELP</a>	<a href="#">PREV LIST</a>	<a href="#">CURR LIST</a>	<a href="#">NEXT LIST</a>
<a href="#">FIRST DOC</a>	<a href="#">PREV DOC</a>	<a href="#">NEXT DOC</a>	<a href="#">LAST DOC</a>							

---

[| HOME](#) | [SITE INDEX](#) | [SEARCH](#) | [eBUSINESS](#) | [HELP](#) | [PRIVACY POLICY](#)



PRODUCTS >

# CleanSweep

Equipped for



Beans



Canola



Corn



Cotton



Peanuts



Small Grains



Sugarbeets



Sunflowers



ZIP code or city



e.g. Tremont, IL

**Set location**

California Consumer Privacy Act (CCPA) Notice At Collection



Setting row cleaners correctly is time-consuming and frustrating. CleanSweep allows you to make row cleaner adjustments from the cab, eliminating the frustration of getting row cleaners set, saving you time while planting.

## After a While, I Stop Adjusting Them

Rarely do we talk to a farmer who likes taking the time to adjust row cleaners, and many admittedly will let the row cleaners run incorrectly instead of take the time to adjust them. This can be costly, as residue is hairpinned against seeds or as soil is plowed out of the way. Hairpinned residue wicks moisture from the seed, causing late emergence and loss in profitability. We knew there had to be a better way than to live in frustration and accept the yield loss, and now you have a fix.



ZIP code or city

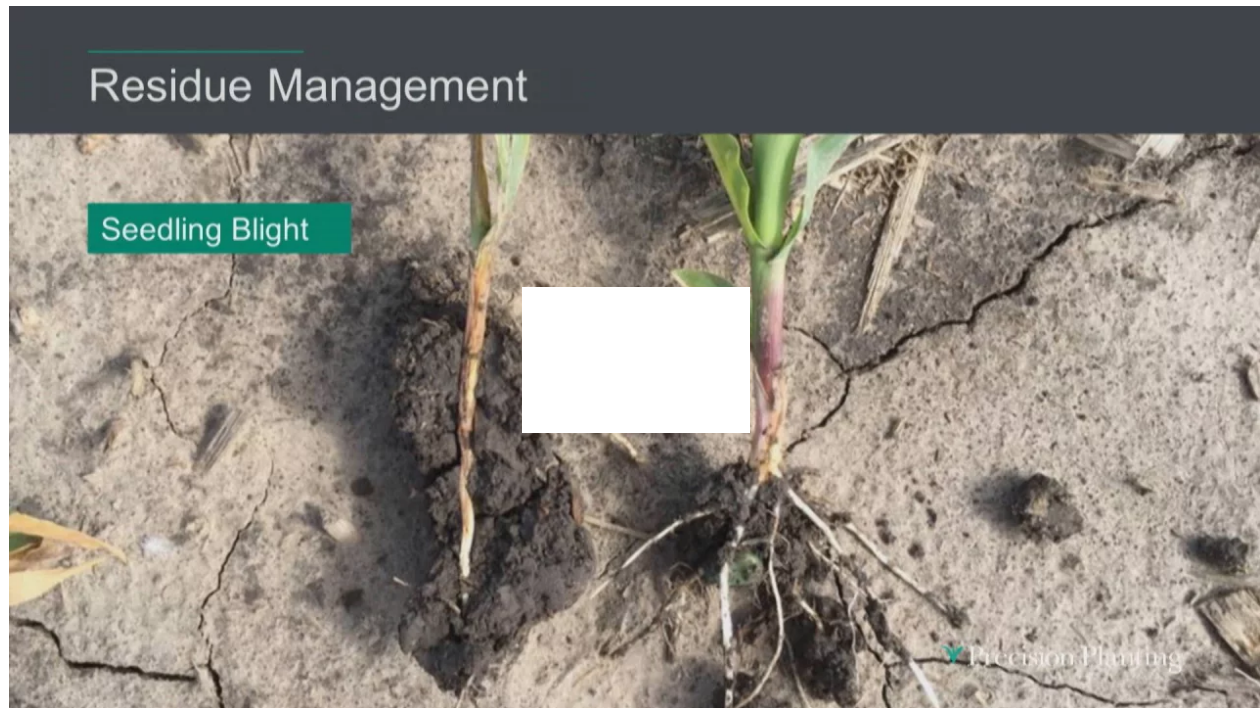
e.g. Tremont, IL

**Set location**

California Consumer Privacy Act (CCPA) Notice At Collection



- Nutrients tied up by residue



## Simple System, Big Payback

CleanSweep uses air cylinders on each row cleaner that can have pressure added to them or removed. Be more aggressive or run lighter, the choice is yours. The pressure adjustment is made by moving a lever in the cab to apply lift pressure or down pressure to the cylinders so they clean the way you want them to. The result is correctly adjusted row cleaners, time savings, and an end to the frustration of not having the planter set correctly.

ZIP code or city

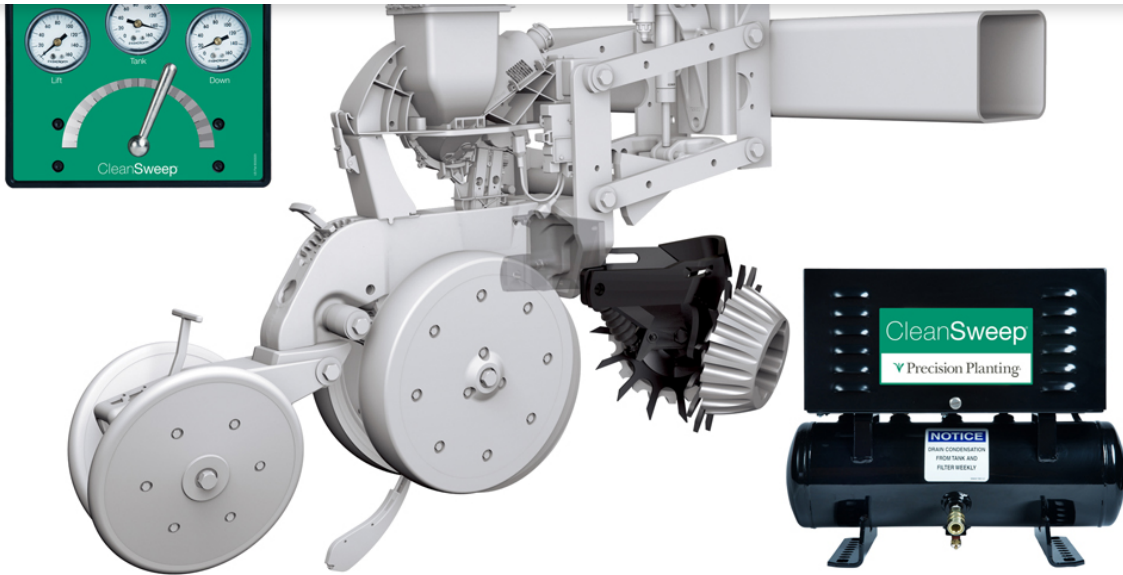
e.g. Tremont, IL

**Set location**

California Consumer Privacy Act (CCPA) Notice At Collection

6/2/2021

CleanSweep | Products | Precision Planting



Remove residue so the row unit doesn't have to worry about it, and get a more consistent stand with ease. CleanSweep just makes sense, and dollars.



ZIP code or city

e.g. Tremont, IL

**Set location**

California Consumer Privacy Act (CCPA) Notice At Collection



## Related products



PRODUCT

### Ready Row Unit



Don't trade planters—upgrade what you already own



PRODUCT

### FurrowForce



Adaptable two-stage closing system

ZIP code or city



e.g. Tremont, IL

**Set location**

California Consumer Privacy Act (CCPA) Notice At Collection



Adjust depth from the cab



PRODUCT

## Keeton Seed Firmer



Seed to soil contact made easy

## Related stories



FUNDAMENTALS

### Achieving Consistent Emergence

ZIP code or city



e.g. Tremont, IL

**Set location**

California Consumer Privacy Act (CCPA) Notice At Collection





[Contact us](#)

[Unsubscribe](#)

[Dealership Opportunities](#)

[Careers](#)

[Partners](#)

[Clothing store](#)

[Cloud login](#)

[Cookie policy](#)

[Terms of use](#)

[Do Not Sell My Info](#)

[Privacy](#)

[California Notice at Collection](#)

[Trademarks](#)

[United States](#)

[1 \(309\) 925-5050](#)

[Email](#)

[Western Europe](#)

[+3 \(363\) 114-5197](#)

[Email](#)

[Argentina](#)

[+54 237 485 8100](#)

[Email](#) [Contact](#)

ZIP code or city



e.g. Tremont, IL

**Set location**

California Consumer Privacy Act (CCPA) Notice At Collection

6/2/2021

CleanSweep | Products | Precision Planting

