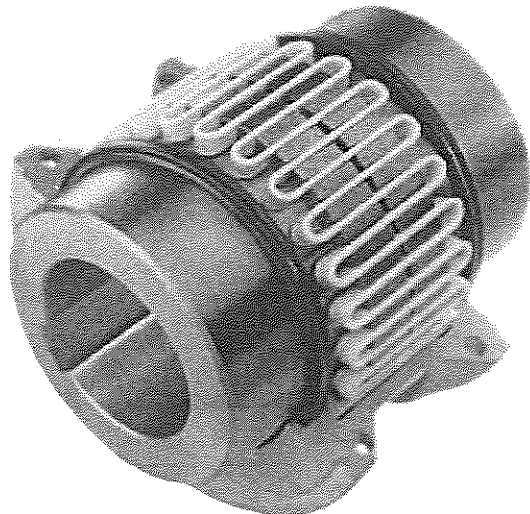
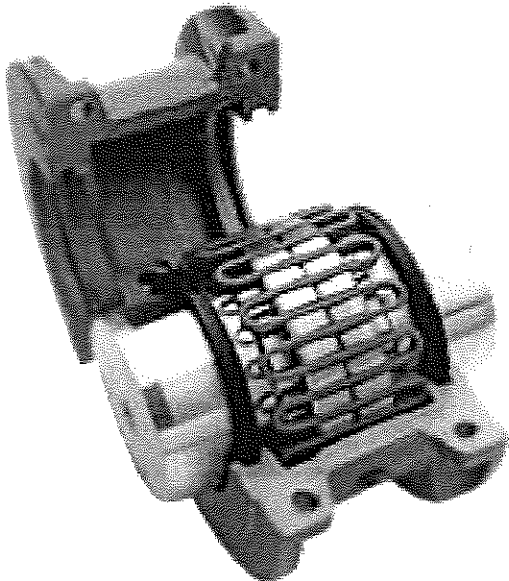
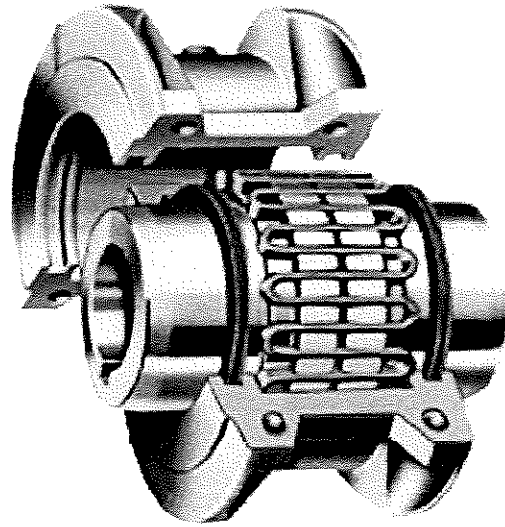
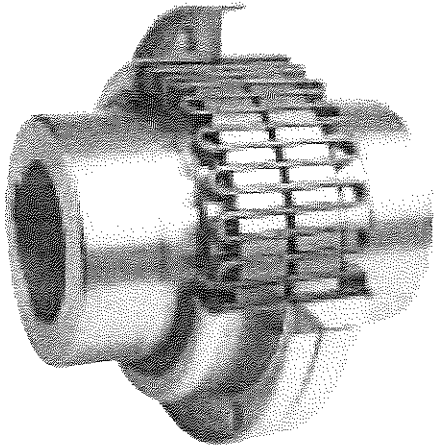




POWER DRIVE

www.powerdrive.com

GRID COUPLING



EXHIBIT

tabbles

18

Selection Procedure

Standard Selection Method

The standard selection method can be used for most motor, turbine, or engine driven applications. The following information is required to select a flexible coupling:

- * Horsepower or torque.
- * Running rpm.
- * Application or type of equipment to be connected (motor to pump, gear drive to conveyor, etc.).
- * Shaft diameters
- * Shaft gaps
- * Physical space limitations.
- * Special bore or finish information and type of fit.

1. RATING:

Determine system torque. If torque is not given, calculate as shown below:

$$\text{System Torque (lb - in)} = \frac{\text{HP} \times 63,000}{\text{RPM}}$$

Where horsepower is the actual or transmitted power required by the application (if unknown, use the motor or turbine nameplate rating) and rpm is the actual speed the coupling is rotating. Applications that require rapid changes in direction or torque reversals should be referred to Powerdrive Engineering.

2. SERVICE FACTOR:

Determine appropriate service factor from Table 4, M-4.

3. Find Design Hp:

Determine the Design Hp rating as shown below.

$$\text{Design Hp} = \text{S.F.} \times \text{Actual Hp}$$

4. REQUIRED MINIMUM COUPLING RATING:

Determine the required minimum coupling rating as shown below:

$$\text{Minimum Coupling Rating} = \text{S.F.} \times \text{Torque (lb-in)}$$

5. TYPE:

select the coupling T-10 Or T-20 which is suitable for your application.

6. SIZE:

Refer to Table 2 & 3 - trace horizontally from the required speed to a Hp value equal to or larger than determined in 3 step. Read the coupling size at a top of column.

7. CHECK:

Check speed (rpm), bore, gap, dimensions and

Standard Selection Example:

Select a coupling to connect a 75 hp, 1750 rpm electric motor driving a lobe type blower. Motor shaft diameter is 2.375", blower shaft diameter is 1.750". Shaft extensions are 5.375" and 4.500". Selection is replacing a gear type coupling with a .125" gap.

1. DETERMINE REQUIRED RATING:

$$\text{System Torque (lb - in)} = \frac{75 \text{ HP} \times 63,000}{1750} = 2700$$

2. SERVICE FACTOR:

From Table 4 for lobe type blower S.F. = 1.25

3. Find Design Hp:

$$1.25 \times 75 = 93.75 \text{hp}$$

4. REQUIRED MINIMUM COUPLING RATING:

$$1.25 \times 2700 \text{ lb-in} = 3375 \text{ lb-in}$$

5. SIZE:

From M- 2, A Size 1050T is the proper selection based on a hp rating of 107hp exceeding the required minimum coupling hp rating of 93.75hp.

6. CHECK:

Allowable speed capacity of 4125rpm (T10) exceeds the required speed of 1750 rpm. Maximum bore capacity of 2.500" that we can not find in size 1050T so we have to choose 1070T size. So selected size will be 1070T.

Table-1

Coupling Size	HP per 100 rpm	Torque Rating (lb-in)	Allowable Speeds - rpm	
			T10	T20
1020T	0.73	460	4500	6000
1030T	2.09	1,320	4500	6000
1040T	3.49	2,200	4500	6000
1050T	6.11	3,850	4500	6000
1060T	9.60	6,050	4350	6000
1070T	14.00	8,800	4125	5500
1080T	28.80	18,150	3600	4750
1090T	52.40	33,000	3600	4000
1100T	88.10	55,550	2440	3250
1110T	131.00	82,500	2250	3000
1120T	192.00	121,000	2025	2700
1130T	279.00	176,000	1800	2400
1140T	401.00	253,000	1650	2200
1150T	559.00	352,000	1500	2000
1160T	785.00	495,000	1350	1750
1170T	1047.00	660,000	1225	1600
1180T	1452.00	915,200	1100	1400
1190T	1920.00	1,210,000	1050	1300
1200T	2618.00	1,650,000	900	1200
1210T	3491.00	2,200,000	820	.
1220T	4712.00	2,970,000	730	.
1230T	6109.00	3,850,000	680	.
1240T	7854.00	4,950,000	630	.
1250T	10472.00	6,600,000	580	.
1260T	13090.00	8,250,000	540	.

Coupling Selection... Based on Equivalent hp Ratings

Table-2

	1020T	1030T	1040T	1050T	1060T	1070T	1080T	1090T	1100T	1110T	1120T	1130T
Max Bore (in)	1.125	1.375	1.625	1.875	2.125	2.5	3	3.5	4	4.500	5	6
Max Speed T10	4500rpm	4500 rpm	4500rpm	4500 rpm	4350rpm	4125rpm	3600rpm	3600rpm	2440rpm	2025rpm	2025rpm	1800rpm
Max Speed T20	6000rpm	6000 rpm	6000rpm	6000rpm	6000rpm	5500rpm	4750 rpm	4000 rpm	3250 rpm	3000rpm	2700rpm	2400rpm
Torque (lb-in)	460	1320	2200	6050	6050	8,800	33,000	33,000	55,550	82,500	1,21,000	176000
HP/10rpm	0.73	2.09	3.49	9.60	9.6	14	52.4	52.4	88.1	131	192	279
	HP Ratings											
RPM												
4500	32.80	94.20	157.00	275.00	432.00	628.00	1296.00					
3600	26.30	75.40	126.00	220.00	346.00	503.00	1037.00	1885.00				
3000	21.90	62.80	105.00	183.00	288.00	419.00	864.00	1571.00	2644.00	3927.00		
2500	18.20	52.40	87.00	153.00	240.00	349.00	720.00	1309.00	2203.00	3273.00	3456.00	
2100	15.30	44.00	73.30	128.00	202.00	293.00	605.00	1100.00	1851.00	2749.00	3456.00	5864.00
1800	13.10	37.70	62.80	110.00	173.00	251.00	518.00	942.00	1587.00	2356.00	3456.00	5027.00
1750	12.80	36.70	61.10	107.00	168.00	244.00	504.00	916.00	1542.00	2291.00	3360.00	4887.00
1450	10.60	30.40	50.60	89.00	139.00	202.00	418.00	759.00	1278.00	1898.00	2784.00	4049.00
1170	8.50	24.50	40.80	71.50	112.00	163.00	337.00	613.00	1031.00	1532.00	2246.00	3267.00
1000	7.30	20.90	34.90	61.10	96.00	140.00	288.00	524.00	881.00	1309.00	1920.00	2793.00
870	6.30	18.20	30.40	53.10	84.00	121.00	251.00	456.00	767.00	1139.00	1670.00	2430.00
720	5.30	15.10	25.10	44.00	69.00	101.00	207.00	377.00	635.00	942.00	1382.00	2011.00
650	4.70	13.60	22.70	39.70	62.40	91.00	187.00	340.00	573.00	851.00	1248.00	1815.00
580	4.20	12.10	20.20	35.40	55.70	81.00	167.00	304.00	511.00	759.00	1114.00	1620.00
520	3.80	10.90	18.20	31.80	49.90	73.00	150.00	272.00	458.00	681.00	998.00	1452.00
420	3.10	8.80	14.70	25.70	40.30	59.00	121.00	220.00	370.00	550.00	806.00	1173.00
350	2.60	7.30	12.20	21.40	33.60	49.00	101.00	183.00	308.00	458.00	672.00	977.00
280	2.00	5.90	9.80	17.10	26.90	39.10	81.00	147.00	247.00	367.00	538.00	782.00
230	1.70	4.80	8.00	14.00	22.10	32.10	66.00	120.00	203.00	301.00	442.00	642.00
190	1.40	4.00	6.60	11.60	18.20	26.50	55.00	99.00	167.00	249.00	365.00	531.00
155	1.10	3.20	5.40	9.50	14.90	21.60	44.60	81.00	137.00	203.00	298.00	433.00
125	0.90	2.60	4.40	7.60	12.00	17.50	36.00	65.00	110.00	164.00	240.00	349.00
100	0.73	2.10	3.50	6.10	9.60	14.00	28.80	52.00	88.00	131.00	192.00	279.00
84	0.61	1.80	2.90	5.10	8.10	11.70	24.20	44.00	74.00	110.00	161.00	235.00
68	0.50	1.40	2.40	4.20	6.50	9.50	19.60	35.60	60.00	89.00	131.00	190.00
56	0.41	1.17	2.00	3.40	5.40	7.80	16.10	29.30	49.00	73.00	108.00	156.00
45	0.33	0.94	1.60	2.70	4.30	6.30	13.00	23.60	39.70	59.00	86.00	126.00
37	0.27	0.77	1.30	2.30	3.60	5.20	10.70	19.40	32.60	48.40	71.00	103.00
30	0.22	0.63	1.00	1.80	2.90	4.20	8.60	15.70	26.40	39.30	58.00	84.00
25	0.18	0.52	0.90	1.50	2.40	3.50	7.20	13.10	22.00	32.70	48.00	70.00
20	0.15	0.42	0.70	1.20	1.90	2.80	5.80	10.50	17.60	26.20	38.40	56.00
16.5	0.12	0.35	0.58	1.00	1.60	2.30	4.80	8.60	14.50	21.60	31.70	46.10
13	0.10	0.27	0.45	0.79	1.20	1.80	3.70	6.80	11.50	17.00	25.00	36.30
11	0.08	0.23	0.38	0.67	1.10	1.50	3.20	5.80	9.70	14.40	21.10	30.70
9	0.07	0.19	0.31	0.55	0.86	1.30	2.60	4.70	7.90	11.80	17.30	25.10
7.5	0.06	0.16	0.26	0.46	0.72	1.00	2.20	3.90	6.60	9.80	14.40	20.90
5	0.04	0.10	0.17	0.31	0.48	0.70	1.40	2.60	4.40	6.50	9.60	14.00

Ratings apply to Type T20 only

Coupling Selection... Based on Equivalent hp Ratings (Continued)

Table 3

	1140T	1150T	1160T	1170T	1180T	1190T	1200T	1210T	1220T	1230T	1240T	1250T
Max. Bore (in.)	7.25	8	9	10	11	12	13	14	15	16	17	18.5
Max Speed T10	1650 rpm	1500 rpm	1350 rpm	1225 rpm	1100 rpm	1050 rpm	900 rpm	820 rpm	730 rpm	680 rpm	630 rpm	580 rpm
Max. Speed T20	2200 rpm	2000 rpm	1750 rpm	1600 rpm
Torque (lb-in.)	253000	352000	495000	660000	915200	1210000	1,650,000	2200000	2970000	3850000	4950000	6600000
HP / 100 rpm	401	559	785	1047	1452	1920	2618	3491	4712	6109	7854	10472
RPM	HP RATING											
2100	8430											
1800	7226	10053										
1750	7025	9774	13745									
1450	5821	8098	11388	15184								
1170	4697	6535	9189	12252								
1000	4014	5585	7854	10472	14521	19199						
870	3492	4859	6833	9111	12633	16703	22777					
720	2890	4021	5655	7540	10455	13823	18850	25133	33929			
650	2609	3630	5105	6807	9439	12479	17017	22689	30631	39706		
580	2328	3239	4555	6074	8422	11135	15184	20246	27332	35430	45553	60738
520	2087	2904	4084	5445	7551	9983	13614	18152	24505	31765	40841	54455
420	1686	2346	3299	4398	6099	8063	10996	14661	19792	25656	32987	43983
350	1405	1955	2749	3665	5082	6720	9163	12217	16493	21380	27489	36652
280	1124	1564	2199	2932	4066	5376	7330	9774	13195	17104	21991	29322
230	923	1285	1806	2409	3340	4416	6021	8029	10839	14050	18064	24086
190	763	1061	1492	1990	2759	3648	4974	6632	8954	11607	14923	19897
155	622	866	1217	1623	2251	2976	4058	5411	7304	9468	12174	16232
125	502	698	982	1309	1815	2400	3273	4363	5891	7636	9818	13090
100	401	559	785	1047	1452	1920	2618	3491	4712	6109	7854	10472
84	337	469	660	880	1220	1613	2199	2932	3958	5131	6597	8797
68	273	380	534	712	987	1306	1780	2374	3204	4154	5341	7121
56	225	313	440	586	813	1075	1466	1955	2639	3421	4398	5864
45	181	251	353	471	653	864	1178	1571	2121	2749	3534	4712
37	149	207	291	387	537	710	969	1292	1744	2260	2906	3875
30	120	168	236	314	436	576	785	1047	1414	1833	2356	3142
25	100	140	196	262	363	480	655	873	1178	1527	1964	2618
20	80	112	157	209	290	384	524	698	942	1222	1571	2094
16.5	66	92	130	173	240	317	432	576	778	1008	1296	1728
13.5	54	75	106	141	196	259	353	471	636	825	1060	1414
11	44.2	61	86	115	160	211	288	384	518	672	864	1152
9	36.1	50	71	94	131	173	236	314	424	550	707	942
7.5	30.1	42	59	79	109	144	196	262	353	458	589	785
5	20.1	27.9	39	52	73	96	131	175	236	305	393	524

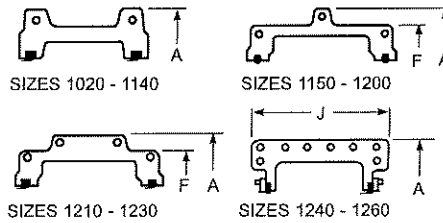
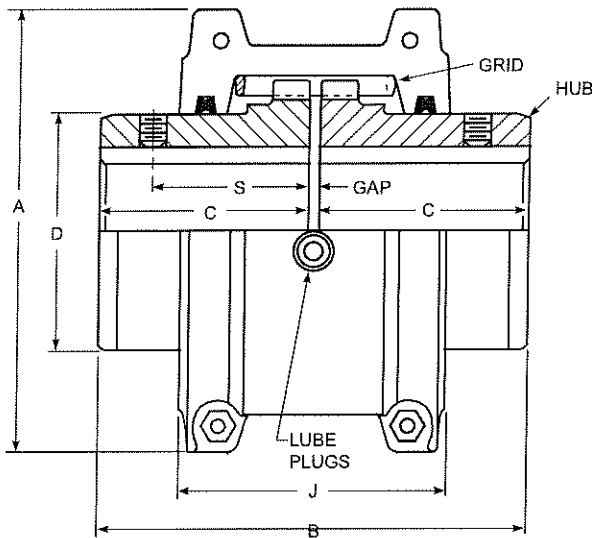
Ratings apply to Type T20 only

Service Factor

Table - 4

AERATOR	2.0	Welder Load	2.0
AGITATORS		HAMMERMILL.....	1.75
Vertical and Horizontal		LAUNDRY WASHER OR	
Screw, Propeller, Paddle	1.0	TUMBLER	2.0
BARGE HAUL PULLER	1.5	LINE SHAFTS	
BLOWERS		Any Processing Machinery	1.5
Centrifugal	1.0	MACHINE TOOLS	
Lobe or Vane	1.25	Auxiliary and Traverse Drive	1.0
CAR DUMPERS	2.5	Bending Roll, Notching Press,	
CAR PULLERS.....	1.5	Punch Press, Planer, Plate	
CLARIFIER OR CLASSIFIER	1.0	Reversing	1.75
COMPRESSORS		Main Drive.....	1.5
Centrifugal	1.0	MAN LIFTS	Not Approved
Rotary, Lobe or Vane.....	1.25	METAL FORMING MACHINES	
Rotary, Screw	1.0	Continuous Caster.....	1.75
Reciprocating		Draw Bench Carriage and	
Direct Connected	Refer to Factory	Main Drive	2.0
Without Flywheel	Refer to Factory	Extruder	2.0
With Flywheel and Gear between Compressor		Farming Machine and	
and Prime Mover		Forming Mills	2.0
1 cylinder, single acting.....	3.0	Slitters	1.0
1 cylinder, double acting	3.0	Wire Drawing or Flattening.....	1.75
2 cylinders, single acting	3.0	Wire Winder	1.5
2 cylinders, double acting	3.0	Coilers and Uncoilers.....	1.5
3 cylinders, single acting	3.0	MIXERS (see Agitators)	
3 cylinders, double acting	2.0	Concrete	1.75
4 or more cyl., single act.	1.75	Muller.....	1.5
4 or more cyl., double act.	1.75	PRESS, PRINTING	1.5
CONVEYORS		PUG MILL	1.75
Apron, Assembly, Belt, Chain,		PULVERIZERS	
Flight, Screw.....	1.0	Hammermill and Hog.....	1.75
Bucket	1.25	Roller.....	1.5
Live Roll, Shaker and		PUMPS	
Reciprocating	3.0	Boiler Feed	1.5
CRANES AND HOIST		Centrifugal —	
Main Hoist.....	1.75	Constant Speed	1.0
Skip Hoist.....	1.75	Frequent Speed Changes	
Slope.....	1.5	under Load	1.25
Bridge, Travel or Trolley	1.75	Descaling, with accumulators	1.25
DYNAMOMETER.....	1.0	Gear, Rotary, or Vane	1.25
ELEVATORS		Reciprocating, Plunger Piston	
Bucket, Centrifugal Discharge	1.25	1 cyl., single or double act.....	3.0
Freight or Passenger	Not Approved	2 cyl., single acting.....	2.0
Gravity Discharge	1.25	2 cyl., double acting	1.75
ESCALATORS	Not Approved	3 or more cylinders.....	1.5
EXCITER, GENERATOR.....	1.0	Screw Pump, Progressing Cavity	1.25
EXTRUDER, PLASTIC.....	1.5	Vacuum Pump	1.25
FANS		SCREENS	
Centrifugal	1.0	Air Washing	1.0
Cooling Tower	2.0	Grizzly	2.0
Forced Draft — Across the		Rotary Coal or Sand.....	1.5
Line start	1.5	Vibrating.....	2.5
Forced Draft Motor		Water	1.0
Driven thru fluid or		SKI TOWS & LIFTS	Not Approved
electric slip clutch	1.0	STEERING GEAR.....	1.0
Gas Recirculating.....	1.5	STOKER	1.0
Induced Draft with damper		TIRE SHREDDER.....	1.50
control or blade cleaner.....	1.25	TUMBLING BARREL	1.75
Induced Draft without controls	2.0	WINCH, MANEUVERING	
FEEDERS		Dredge, Marine	1.5
Apron, Belt, Disc, Screw	1.0	WINDLASS.....	1.5
Reciprocating.....	2.5	WOODWORKING	
GENERATORS		MACHINERY.....	1.0
Even Load.....	1.0	WORK LIFT PLATFORMS...Not Approved	
Hoist or Railway Service	1.5		

Grid Coupling TYPE T10



Sizes 1020 thru 1230T10 covers are cast aluminum alloy; Sizes 1240 thru 1260T10 are fabricated steel.

Type HD size range is from 1070-1140 as shown in shared areas below. Covers are powder-coated and seals are Nitrile

Table-5

SIZE	Torque Rating (lb-in)	Allow Speed rpm	Max Bore	Min Bore	Cplg Wt With No Bore-lb	Lube Wt lb	DIMENSIONS—INCHES							
							A	B	C	D	F	J	S	GAP
1020T	460	4500	1.125	0.500	4.2	0.06	3.82	3.88	1.88	1.56	.	2.62	1.54	0.125
1030T	1,320	4500	1.375	0.500	5.7	0.09	4.16	3.88	1.88	1.94	.	2.69	1.54	0.125
1040T	2,200	4500	1.625	0.500	7.4	0.12	4.50	4.12	2.00	2.25	.	2.75	1.58	0.125
1050T	3,850	4500	1.875	0.500	12.0	0.15	5.32	4.88	2.38	2.62	.	3.19	1.76	0.125
1060T	6,050	4350	2.125	0.750	16.0	0.19	5.82	5.12	2.50	3.00	.	3.68	2.06	0.125
1070T	8,800	4125	2.500	0.750	23.0	0.25	6.25	6.12	3.00	3.44	.	3.81	2.12	0.125
1080T	18,150	3600	3.000	1.062	39.0	0.38	7.50	7.12	3.50	4.12	.	4.55	2.54	0.125
1090T	33,000	3600	3.500	1.062	56.0	0.56	8.31	7.88	3.88	4.88	.	4.81	2.82	0.125
1100T	55,550	2440	4.000	1.625	93.0	0.94	9.88	9.69	4.75	5.59	.	6.12	.	0.125
1110T	82,500	2250	4.500	1.625	120.0	1.12	10.62	10.19	5.00	6.31	.	6.36	.	0.125
1120T	121,000	2025	5.000	2.375	179.0	1.62	12.12	12.00	5.88	7.06	.	7.54	.	0.125
1130T	176,000	1800	6.000	2.625	266.0	2.00	13.62	13.00	6.38	8.56	.	7.68	.	0.188
1140T	253,000	1650	7.250	2.625	392.0	2.50	15.12	14.75	7.25	10.00	.	7.92	.	0.188
1150T	352,000	1500	8.000	4.250	500.0	4.30	17.84	14.65	7.20	10.60	15.40	10.69	.	0.250
1160T	495,000	1350	9.000	4.750	681.0	6.20	19.76	15.85	7.80	12.00	17.20	10.96	.	0.250
1170T	660,000	1225	10.000	5.250	987.0	7.70	22.32	17.25	8.50	14.00	19.18	12.10	.	0.250
1180T	915,000	1100	11.000	6.000	1365.0	8.30	24.80	19.05	9.40	15.50	21.84	12.64	.	0.250
1190T	1,210,000	1050	12.000	6.000	1710.0	9.70	26.60	20.65	10.20	17.20	23.93	12.80	.	0.250
1200T	1,650,000	900	13.000	7.000	2331.0	12.40	29.80	22.25	11.00	19.60	26.00	14.00	.	0.250
1210T	2,200,000	820	14.000	7.000	3140.0	23.20	33.25	24.50	12.00	21.00	29.56	17.00	.	0.500
1220T	2,970,000	730	15.000	8.000	3935.0	35.40	36.25	26.10	12.80	22.50	32.37	19.30	.	0.500
1230T	3,850,000	680	16.000	8.000	4997.0	53.00	39.50	27.70	13.60	24.00	35.62	21.50	.	0.500
1240T	4,950,000	630	17.000	10.000	6504.0	74.50	42.80	29.50	14.50	25.50	.	25.50	.	0.500
1250T	6,600,000	580	18.500	10.000	8450.0	110.50	46.50	32.10	15.80	28.00	.	27.50	.	0.500
1260T	8,250,000	540	20.000	10.000	10322.0	148.10	49.64	34.50	17.00	30.00	.	30.00	.	0.500

Grid Coupling TYPE T20

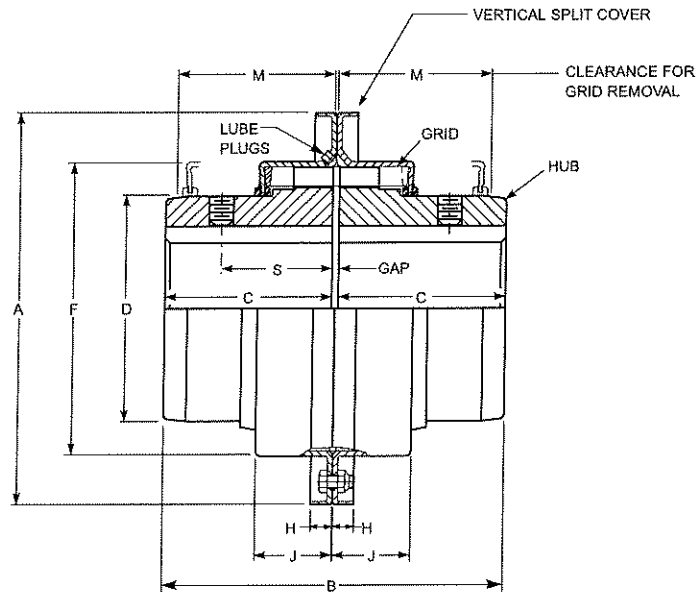
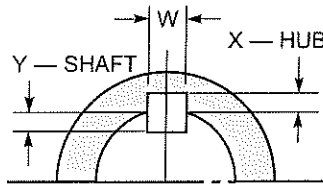


Table-6

SIZE	Torque Rating (lb-in)	Allow Speed rpm	Max Bore	Min Bore	Cplg Wt With No Bore-lb	Lube Wt lb	DIMENSIONS—INCHES									
							A	B	C	D	F	H	J	M	S	GAP
1020T	460	6000	1.125	0.500	4.3	0.06	4.42	3.88	1.88	1.56	2.50	0.38	0.94	1.88	1.54	0.13
1030T	1,320	6000	1.375	0.500	5.7	0.09	4.80	3.88	1.88	1.94	2.88	0.38	0.98	1.88	1.54	0.13
1040T	2,200	6000	1.625	0.500	7.4	0.12	5.11	4.12	2.00	2.25	3.25	0.38	1.02	2.00	1.58	0.13
1050T	3,850	6000	1.875	0.500	12.0	0.15	5.86	4.88	2.38	2.62	3.88	0.47	1.20	2.38	1.76	0.13
1060T	6,050	6000	2.125	0.750	15.0	0.19	6.42	5.12	2.50	3.00	4.38	0.50	1.25	2.50	2.06	0.13
1070T	8,800	5500	2.500	0.750	23.0	0.25	6.86	6.12	3.00	3.44	4.88	0.50	1.32	2.62	2.12	0.13
1080T	18,150	4750	3.000	1.062	39.0	0.38	7.92	7.12	3.50	4.12	5.88	0.50	1.72	3.50	2.54	0.13
1090T	33,000	4000	3.500	1.062	56.0	0.56	9.17	7.88	3.88	4.88	6.62	0.50	1.85	3.75	2.82	0.13
1100T	55,550	3250	4.000	1.625	93.0	0.94	10.55	9.69	4.75	5.59	7.75	0.62	2.35	4.75	.	0.19
1110T	82,500	3000	4.500	1.625	120.0	1.12	11.30	10.19	5.00	6.31	8.50	0.63	2.47	4.88	.	0.19
1120T	121,000	2700	5.000	2.375	180.0	1.62	12.61	12.00	5.88	7.06	9.62	0.69	2.90	5.62	.	0.25
1130T	176,000	2400	6.000	2.625	270.0	2.00	14.92	13.00	6.38	8.56	11.12	0.81	2.95	5.75	.	0.25
1140T	253,000	2200	7.250	2.625	397.0	2.50	16.42	14.75	7.25	10.00	12.62	0.81	3.08	6.12	.	0.25
1150T	352,000	2000	8.000	4.250	507.0	4.30	18.75	14.65	7.20	10.60	14.72	0.76	4.21	4.21	.	0.25
1160T	495,000	1750	9.000	4.750	708.0	6.20	21.00	15.85	7.80	12.00	16.68	1.18	4.50	4.50	.	0.25
1170T	660,000	1600	10.000	5.250	988.0	7.70	23.00	17.25	8.50	14.00	18.68	1.18	4.70	4.70	.	0.25

Engineering Data



Keyway Nomenclature

Table 7 - Type T10 & T20 Hub & Flanged Hub Bore Ranges with Square & Rectangular Keys

SIZE	For One Square Key					For One Rectangular Key					For Two Square Keys			For Two Rectangular Key		
	Min Bore	Max Bore	Y=X		Max Bore	Y=X		Max Bore	Y=X		Max Bore	Y=X		Max Bore	Y=X	
			W	X		W	X		W	X		W	X			
1020T	0.50	1.13	0.250	0.125	1.187	0.250	0.093	1.25	0.250	0.062
1030T	0.50	1.38	0.312	0.156	1.437	0.375	0.125	1.56	0.375	0.062
1040T	0.50	1.63	0.375	0.187	1.750	0.375	0.125	1.75	0.375	0.062
1050T	0.50	1.88	0.500	0.250	2.000	0.500	0.187	2.13	0.500	0.125
1060T	0.75	2.13	0.500	0.250	2.250	0.500	0.187	2.38	0.625	0.125
1070T	0.75	2.50	0.625	0.312	2.687	0.625	0.218	2.88	0.750	0.125
1080T	1.06	3.00	0.750	0.375	3.250	0.750	0.250	3.38	0.875	0.187
1090T	1.06	3.50	0.875	0.437	3.750	0.875	0.312	3.88	1.000	0.250
1100T	1.63	4.00	1.000	0.500	4.250	1.000	0.375	4.50	1.000	0.250
1110T	1.63	4.50	1.000	0.500	4.625	1.250	0.437	5.00	1.250	0.250
1120T	2.38	5.00	1.250	0.625	5.375	1.250	0.437	5.75	1.500	0.250
1130T	2.63	6.00	1.500	0.750	6.500	1.500	0.500	6.50	1.500	0.250
1140T	2.63	7.00	1.750	0.875	7.250	1.750	0.750	7.75	2.000	0.500
1150T	4.25	7.50	1.750	0.875	8.000	2.000	0.750
1160T	4.75	8.50	2.000	1.000	9.000	2.000	0.750
1170T	5.25	9.75	2.500	1.250	10.000	2.500	0.875	.	.	.	10.75	1.75	0.88	11.00	1.75	0.75
1180T	6.00	10.75	2.500	1.250	11.000	2.500	0.875	.	.	.	12.00	1.75	0.88	12.25	2.00	0.75
1190T	6.00	11.75	3.000	1.500	12.000	3.000	1.000	.	.	.	13.00	2.00	1.00	13.25	2.00	0.75
1200T	7.00	12.75	3.000	1.500	13.000	3.000	1.000	.	.	.	14.00	2.50	1.25	14.25	2.50	0.88
1210T	7.00	13.75	3.500	1.750	14.000	3.500	1.250	.	.	.	15.00	2.50	1.25	15.25	2.50	0.88
1220T	8.00	14.75	3.500	1.750	15.000	3.500	1.250	.	.	.	16.00	2.50	1.25	16.25	3.00	1.00
1230T	8.00	15.75	4.000	2.000	16.000	4.000	1.500	.	.	.	17.00	3.00	1.50	17.25	3.00	1.00
1240T	10.00	16.75	4.000	2.000	17.000	4.000	1.500	.	.	.	18.00	3.00	1.50	18.25	3.00	1.00
1250T	10.00	18.00	4.000	2.000	18.500	5.000	1.750	.	.	.	19.25	3.50	1.75	19.75	3.50	1.25
1260T	10.00	19.50	5.000	2.500	20.000	5.000	1.750	.	.	.	20.75	3.50	1.75	21.25	3.50	1.25

All Dimensions are in inches
Metric keyways and keyway radiuses will be furnished per ISO /R773