



LITECLEAR

**SKIN PERMEATION ENHANCER (SPE™)
PRODUCT MANUAL**



Skin imperfections? Use skincare products.
Recapture your youthful appearance? Use creams and lotions.
All require nutrients to be absorbed by the skin.
The key to this is: SKIN PERMEATION TECHNOLOGY.

[BACKGROUND] ▶

Over the past 150 years, the limitations of skin permeation technology have become well-known. If the permeation is too deep: the dermal layer may be damaged, control of the release rate is not precise, and there is always the risk of pain, infection, and potentially toxic side effects. If the permeation is too shallow, the thin but tough stratum corneum of the skin will keep out desirable skincare ingredients. A solution is needed to improve the absorption rate and ensure the right amount of nutrients reach the right place at the right speed at the right time using the right method. With the emergence of the SPE™ today, this goal becomes reality!

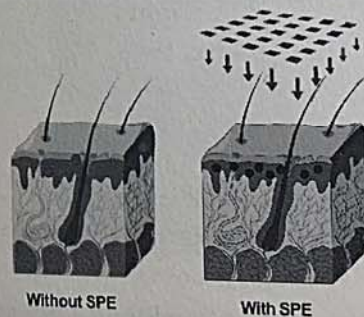
Breakthrough SPE™ Technology

The Skin Permeation Enhancer (SPE) is a handheld cosmetic tool with an array of pyramid-like microstructures, each point on the array having a diameter smaller than that of a single strand of human hair – almost invisible to the naked eye. It is manufactured from mono-crystalline silicon, using advanced semiconductor fabrication technology.

Clinical studies have shown that the SPE™ nano-scale channels can help deliver ingredients up to 60-70 microns below the stratum corneum. When these “invisible” arrays are applied to the skin, they compromise the stratum corneum and temporarily open up transient channels for the delivery of nutrients into the deeper layers of the epidermis.

[PRINCIPLE] ▶

The stratum corneum is the main barrier to the absorption of ingredients of skin care products. Even the most potent skincare ingredients will have no effect if they never reach their intended target. This makes the permeation of ingredients further into the epidermis more critical than ever in determining a product's effectiveness. Most creams or lotions must rely on “chemical enhancers,” such as solvents and surfactants, to help their ingredients penetrate further into the epidermis. Not surprisingly, it is often these enhancers, not the desirable ingredients themselves that cause some skin irritations.



A key benefit of the SPE™ tool is the increased absorption rate of ingredients at the right location within the epidermis that maximizes their effects.

Since the SPE™ created nano-scale channels stay in the epidermal layer without reaching the dermis, where the nerves reside, there is no pain, bleeding, or discomfort. It is safe, painless, and efficient.

【PRODUCT FEATURES】▶

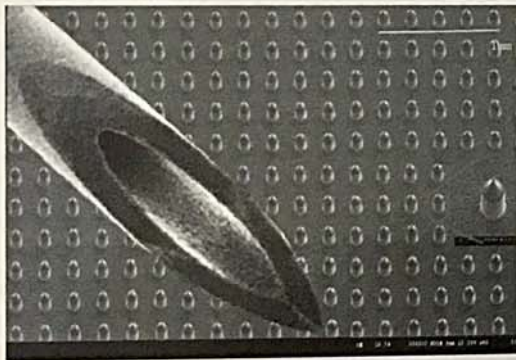
By applying the SPE™ tool vertically to the skin, transient channels are created in the stratum corneum that allow the enhanced permeation of nutrients through skin to reach desired target sites.

- Improved absorption without damaging the dermal layer
- Fast, safe, effective, and painless

【UNIQUE VALUE PROPOSITION】▶

• The Science

- Cutting-edge nano-fabrication technology
- 13 patents filed, 8 of which have already been issued
- Much smaller than traditional hypodermic needles
- Transient channels created in the stratum corneum

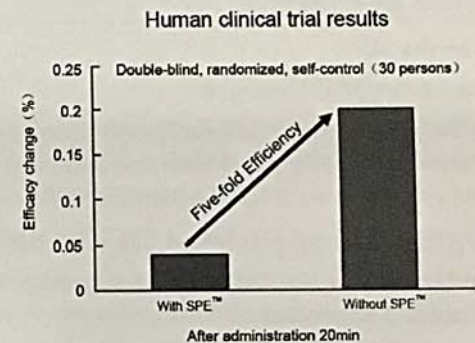


• Safe

After Repeated Insult Patch Test (RIPT) and drug compatibility testing with benzoyl peroxide, no skin irritations or allergic reactions were observed during and after using the SPE™ tool.

• Highly Effective

Published results in The American Journal of Emergency Medicine, 2010 Feb; 28(2):130-4 (PMID: 20159380) show how the SPE™ tool can accelerate ingredient absorption and reduce onset time.



• Breakthrough

- Core SPE™ technology uses extremely pure, single crystal silicon as material to make proprietary nanotechnology products.
- Nanotechnology is the ultimate application of micro- and nano-fabrication. The SPE™ tool uses nanotechnology that can rapidly create nano-scale channels on the stratum corneum to facilitate the absorption of nutrients by the skin.

• Fashionable

- Ergonomic design: novel, innovative and special
- LED indication light
- Innovative products that are easy-to-use

[FREQUENTLY ASKED QUESTIONS (FAQ)] ▶

1. How do I use the SPE™ tool?

Place the SPE™ tool perpendicular to the skin, and press until the LED light turns on, then hold it for 3-5 seconds. It's that simple!

2. When is the best time to use the SPE™ tool?

Before bedtime to allow a whole night's rest for the absorption of nutrients into the skin.

3. How often should I use the SPE™ tool?

Once every night before going to bed – then enjoy the enhanced absorption of your favorite skincare product. For sensitive skin, you can reduce application to once-a-week.

4. Will the SPE™ tool cause skin irritation or allergic reactions?

The SPE™ tool is made from a single piece of silicon material with a layer of biocompatible coating. Note: A skin sensitivity test on the inside of the wrist is recommended before using the SPE™ tool for the first-time, especially if you know you have sensitive skin. If you have a history of allergies, consult your physician. The skin sensitivity test will only help confirm that you will not have an allergic reaction.

5. How many times can each SPE™ tool be used?

The SPE™ tool is reusable up to 300 times. It is conducted on the inside of your wrist as if you are using this product.

6. Would a larger application area for the SPE™ tool lead to better results?

Not necessarily. Because the skin surface is curved, enhanced permeation will not be uniform when the designated SPE™ area becomes too large. Test results show that a 25mm² area is ideal for use with most skincare applications. An SPE™ area as small as 1mm² has been demonstrated to still achieve amazing results.

7. How long do channels in the skin stay open after using the SPE™ tool?

The nano-scale channels stay open for 10-20 minutes – just enough time to allow optimal absorption of nutrients.

8. Does the SPE™ tool have any side effects?

Unlike a chemical enhancer, the SPE™ tool is a physical cosmetic tool made of a single piece of high purity silicon – this has been proven not to irritate the skin or induce allergic reactions caused by chemicals. No adverse effects have been observed during human clinical studies.

9. How hard should I press the SPE™ tool into my skin?

Pressure strength varies for different skin sites. At the more sensitive areas (e.g., around the eyes), avoid using excessive force. Other regions of the body may require moderate intensity. The LED light is intended to indicate when enough pressure has been applied.

10. My skin is bleeding with pus. Can I still use the SPE™ tool?

First seek anti-inflammatory relief and use cotton swabs to wipe away blood and pus. You may use the SPE™ tool after the wound slightly heals, and take care to apply disinfectant after each use when cleaning the SPE™ tool. plied.

Product name: Skin Permeation Enhancer (SPE™)

Specifications: The SPE™ tool comes in different sizes and designs to meet the most demanding skin care needs. Each design includes 20 to hundreds of invisible pyramid-like structures.

Model Number	Surface Area (mm2)			Roller	LED	Sound	Tube Dispenser	Timer
	2×2	3×3	5×5					
SPE No.2	✓	✓			✓		✓	
SPE No.5	✓		✓		✓	✓		✓
SPE No.8			✓	✓		✓		
SPE No.9				✓				

【Storage】 Store in a well-ventilated place, avoid dampness, stress and impact on the SPE™ head

【Manufacturer】 Nanomed Skincare Inc.

【Date of production】 See the product packaging

【Lot Number】 See the product packaging

【Website】 <http://www.nanomed-skincare.com>



The Micro Array patch, a finalist in this year's Asian Innovation Awards, is reusable...
The Wall Street Journal, Sept. 22, 2010

福布斯中文网
Forbes
FORBESCHINA.COM

(SPE) is a disruptive innovation in traditional delivery technology...
Forbes China, Oct. 2011

As an explorer who shuttles the future
into the present
As an innovator, continues to make the
"future" happen "now"
As a service provider, offers better products and
technology for public health and beauty

Our vision is to use nanotechnology to make products
faster, better, less expensive.

We firmly believe that science and technology
will bring about even more beautiful and healthy
lifestyle changes.

We rely on continued research and development,
so everyone who loves beauty, health, and life can
enjoy even more.



LITECLEAR

Science and Technology • Fashion • People-Oriented