

# **Exhibit B**











## Delta Series Mixing Tubes

*brought to you by Shape Technologies Group*

Introducing the SHAP~~E~~ Delta Series waterjet cutting mixing tubes – brought to you by the leading experts in waterjet. The Delta Series design draws on years of technical knowledge, detailed analysis of water and abrasive flow, and the latest data from real life applications. The result is a new, proprietary mixing tube design that creates efficient flow, reliably – the Delta Series.

### Free-Flowing Design

Featuring an all new design, the Delta Series significantly improves abrasive and water flow beginning, of course, at the inlet. Understanding the flow of water and abrasive as it enters the mixing tube from the mixing chambers (even old and worn mixing chambers) is key to creating a design that encourages through-flow at every startup and every pierce. Our new design reduces clogging improves uptime and profit per hour.

### Alignment - Reduced Wear

Improved flow into the mixing tube extends the mixing tube life. When the water and abrasive stream is aligned, energy is focused to pass through the center, reducing wear on the inside walls. This reduction in wear makes the Delta mixing tubes ideal for long-run jobs, while the alignment improvement creates a better, tighter stream.

### Long, Cohesive Stream for Accuracy

An aligned jet stream results in a more cohesive, tighter, jet pattern, improving dimensional accuracy and consistency when producing finished parts in thin or thick materials. Reliably produce finished, more accurate parts directly on the waterjet, without the need for secondary processing.

### Fast Cutting

When friction is reduced through the mixing tube, more energy is delivered to the part being cut and less abrasive is broken down before exiting the mixing tube. This enables more consistent results, faster cutting, and better edge quality in a wide range of materials.

### Leveraging Materials

The new Delta Series design incorporates a wear-resistant carbide material with low boron content. Our materials are carefully controlled from raw material production and mineral ores to the development of the carbide powder, and finally, to the ultimate creation of the advanced material make-up itself with excellent wear properties to maximize your overall profit per cutting hour.



## Our Waterjet Knowledge, Your Gain

The engineers behind the unique design of the Delta Series intimately understand what owners and operators need from their waterjet. Using data, years of waterjet knowledge, and research we crafted the next generation of mixing tube nozzles with operator performance in mind.

## Delta & Delta NXT

Get right mixing tube to match your cutting and application requirements. Select from our Delta, and Delta NXT options.

### Delta

Our Delta mixing tube offers reliable performance and optimized cutting for most jobs.

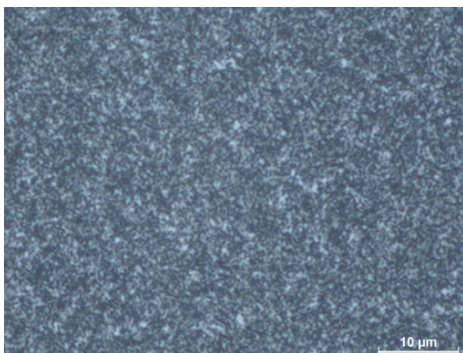
### Delta NXT

Our Delta NXT mixing tubes offer higher performance and 20-30% longer life over the Delta line.

Pair the SHAPE Delta Series with diamond orifices for exceptional waterjet cutting performance. Diamond orifices optimize the water stream through the mixing chamber and into the mixing tube, even before it entering the mixing tube, improving cutting performance and speed.

Our SHAPE Delta Series mixing tubes are specifically designed for Shape Mined Material abrasives. Get consistent, reliable performance for your cut with performance streamlined by SHAPE.

*\*Performance will vary based on material and application.*



### Carbide Micrograph

Low boron carbide made with a proprietary process and strict quality control to minimize wear and ensure consistent performance.

Flow Standard Terms and Conditions apply.

[flowparts.com/pages/terms-and-conditions](https://flowparts.com/pages/terms-and-conditions)

[READ HERE](#)




[Mixing Tubes: Paser 4](#)
[Mixing Tubes: Paser ECL](#)
[Rated Pressure: 94k](#)


Notes	
1	Delta Series Premium Waterjet Cutting Mixing Tubes are available in 3 and 4 inch standard length and id. <a href="#">Learn more &gt;</a>
2	Delta Series Premium Waterjet Cutting Mixing Tubes are available in 3 and 4 inch standard length and id. <a href="#">Learn more &gt;</a>

## HOT! DELTA NXT PREMIUM WATERJET MIXING TUBE FOR PASER ECL & PASER 4 (SELECT YOUR SIZE)

Introducing the SHAPE Delta Series waterjet cutting mixing tubes. These mixing tubes are a more advanced design of Flow Paser ECL and Paser 4 014194-XX-XX mixing tubes. The Delta Series draws on years of technical knowledge, detailed analysis of water and abrasive flow, and the latest data from our customer's everyday applications. Available in 3 and 4 inch standard length and id. [Learn more >](#)

### Cutting Head Compatibility

- Paser 4, Paser ECL

### Machine XY Model Compatibility

- IFB, Mach 2b, Mach 2c, Mach 300, Mach 3b/GIFB, Mach 4c, Mach 500, WMC

Part Number

Inner Diameter

Length

Quantity  Each

Total Price [Login to see prices.](#)

### Specifications

#### Engineering Title(s):

1000003-15-40: MIXING TUBE ASSY;PREMIUM;.015 ID;4 IN LG  
 1000003-20-40: MIXING TUBE ASSY;PREMIUM;.020 ID;4 IN LG  
 1000003-30-40: MIXING TUBE ASSY;PREMIUM;.030 ID;4 IN LG  
 1000003-35-40: MIXING TUBE ASSY;PREMIUM;.035 ID;4 IN LG  
 1000003-40-40: MIXING TUBE ASSY;PREMIUM;.040 ID;4 IN LG  
 1000003-50-40: MIXING TUBE ASSY;PREMIUM;.050 ID;4 IN LG  
 1000003-60-40: MIXING TUBE ASSY;PREMIUM;.060 ID;4 IN LG  
 1000003-70-40: MIXING TUBE ASSY;PREMIUM;.070 ID;4 IN LG  
 1000003-50-35: MIXING TUBE ASSY;PREMIUM;.050 ID  
 1000003-20-30: MIXING TUBE ASSY;PREMIUM;.020 ID;3 IN LG  
 1000003-30-30: MIXING TUBE ASSY;PREMIUM;.030 ID;3 IN LG  
 1000003-35-30: MIXING TUBE ASSY;PREMIUM;.035 ID;3 IN LG  
 1000003-40-30: MIXING TUBE ASSY;PREMIUM;.040 ID;3 IN LG



GENUINE FLOW PARTS



### Genuine Flow Parts

As the only waterjet manufacturer that is ASME certified to produce ultrahigh-pressure equipment, you can be assured that there is no compromise when it comes to the safety of our customers.

 A Shape Technologies Group Company

© 2019 Flow International Corporation. All rights reserved. | [Imprint](#) | [Privacy Policy](#) | [California Supply Chain Act](#) | [Terms & Conditions](#)



Mixing Tubes: Paser 4    Mixing Tubes: Paser ECL  
Rated Pressure: 60k



**Notes:**

1. This product is not intended for use in applications where it will be subjected to impact or shock loading.

**Warnings:**

1. This product is not intended for use in applications where it will be subjected to impact or shock loading.

2. This product is not intended for use in applications where it will be subjected to impact or shock loading.

3. This product is not intended for use in applications where it will be subjected to impact or shock loading.

4. This product is not intended for use in applications where it will be subjected to impact or shock loading.

5. This product is not intended for use in applications where it will be subjected to impact or shock loading.

6. This product is not intended for use in applications where it will be subjected to impact or shock loading.

7. This product is not intended for use in applications where it will be subjected to impact or shock loading.

8. This product is not intended for use in applications where it will be subjected to impact or shock loading.

9. This product is not intended for use in applications where it will be subjected to impact or shock loading.

10. This product is not intended for use in applications where it will be subjected to impact or shock loading.

## HOT! DELTA STANDARD WATERJET MIXING TUBE FOR PASER ECL & PASER 4 (SELECT YOUR SIZE)

Introducing the SHAPE Delta Series waterjet cutting mixing tubes. These mixing tubes are a more advanced design of Flow Paser ECL and Paser 4 014214-XX-XX mixing tubes. The Delta Series draws on years of technical knowledge, detailed analysis of water and abrasive flow, and the latest data from our customer's everyday applications. Available in 3 and 4 inch standard length and id. [Learn more >](#)

### Cutting Head Compatibility

- Paser 4, Paser ECL

### Machine XY Model Compatibility

- IFB, Mach 2b, Mach 2c, Mach 300, Mach 3b/GIFB, Mach 4c, Mach 500, WMC

Part Number

Inner Diameter

Length

Quantity  Each

Total Price [Login to see prices.](#)

### Specifications

#### Engineering Title(s):

- 1000001-30-30: MIXING TUBE ASSY;.030 ID;3 IN LG
- 1000001-30-40: MIXING TUBE ASSY;.030 ID;4 IN LG
- 1000001-35-30: MIXING TUBE ASSY;.035 ID;3 IN LG
- 1000001-35-40: MIXING TUBE ASSY;.035 ID;4 IN LG
- 1000001-40-30: MIXING TUBE ASSY;.040 ID;3 IN LG
- 1000001-40-40: MIXING TUBE ASSY;.040 ID;4 IN LG
- 1000001-50-35: MIXING TUBE ASSY;.050 ID;3.5 IN LG
- 1000001-50-40: MIXING TUBE ASSY;.050 ID;4 IN LG

1.800.526.4810



[Home](#) [FlowCare](#) [Shop](#) [Contact](#) [Sale Items](#)

LOGIN   (0) 

GENUINE FLOW PARTS

safety of our customers.

 A Shape Technologies Group Company

© 2019 Flow International Corporation. All rights reserved. | [Imprint](#) | [Privacy Policy](#) | [California Supply Chain Act](#) | [Terms & Conditions](#)