

EXHIBIT C



DAGR®
GRAVITY AIRBRUSH
(.35MM)

Order No. Model No.
802609 DGR-501G-35

DAGR® Studio
GRAVITY AIRBRUSH,
2 CUPS AND HOSE

Order No. Model No.
803125 DGR-603

AirBlade®
Compressor with
Regulator (1/8 hp)

Order No. Model No.
803286 DGR-518-1

DAGR® Airbrush
& Compressor
Kit (1/8 hp)

Order No. Model No.
803285 DGR-604G-35



DGR-501G-35



DAGR® Studio **DGR-603**

Everything the Automotive Artist needs to get started!

- DAGR airbrush with 1/3 oz. cup
- 1/2 fl. oz. (14cc) cup and lid – ideal for spraying larger areas without refilling
- 10 ft. braided nylon air hose



803286 / DGR-518-1

803285 / DGR-604G-35

DAGR® Airbrush

Order No.	Model No.	Description
802609	DGR-501G-35	DAGR® Gravity Airbrush
803125	DGR-603	DAGR® Studio (Gravity Airbrush, 2 1/2-oz. Cups & 10-ft. Braided Hose)

Performance and Versatility for the Automotive Artist

Excellent Control

- Hairline detail to high paint-flow shading
- Smooth double action trigger
- Pre-set handle for precise control of paint flow

Versatile

- Sprays automotive paints to waterbased inks
- Removable 1/3 oz. gravity cup, with optional 1/4 oz. cups available, or spray with no cup

Comfortable

- Light weight and balanced
- Choice of trigger buttons

Durable

- Solvent proof fluid passages, PTFE needle packing
- Copper, nickel and chrome plated body

High Quality

- Precision made in U.S.A.

Value

- Crown cap standard for fine lines and needle protection
- Collector storage tin included

AirBlade® Compressors

Order No.	Model No.	Description
803286	DGR-518-1	AirBlade® Compressor w/Regulator (1/8 hp) .07 CFM, up to 30 PSI, 120V
803285	DGR-604G-35	Gravity DAGR®, AirBlade® Compressor w/Regulator (1/8 hp), Hose
803287	DGR-140	Regulator w/Filter, Moisture Trap, Hanger

AirBlade® Compressors Include:

- Regulator
- Water trap filter
- Airbrush holder

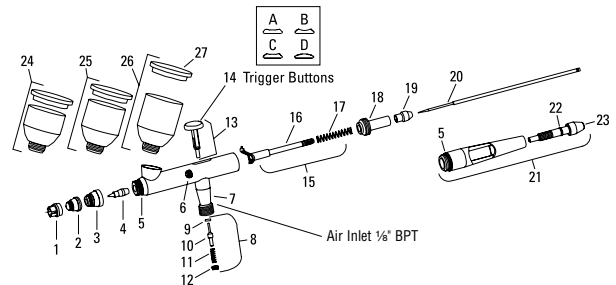
Refer to Service Bulletin: SB-2-055

Specifications

Operating Pressures	20 to 50 psi
Maximum Inlet Pressure	175 psi
Airbrush Plating	Nickel, copper, chrome
Needle Packing	PTFE (solvent-proof)

DAGR Repair Kit 802635 (DGR-121K)

Ref. No.	Description	Qty.
5	O-ring (head cap & handle)	3
9	Air valve washer	2
17	Needle spring	1
22	O-ring (pre-set needle knob)	1



Ref. No.	Order No.	Model No.	Description	Ind. Parts Req.
1	802613	DGR-101	Crown cap	1
2	802615	DGR-103-35	Air cap (for .35mm nozzle)	1
3	802616	DGR-104	Head cap	1
4	802618	DGR-105-35	Nozzle (.35mm)	1
5	—	—	O-ring (head cap & handle)	1
6	802619	DGR-106K	Packing and nut assembly (PTFE)	1
7	802620	DGR-107	Air valve casing	1
8	802621	DGR-108K	Air valve kit	1
9	—	—	Air valve washer	1
10	—	—	Air valve plunger	1
11	—	—	Air valve spring	1
12	—	—	Air valve nut	1

Ref. No.	Order No.	Model No.	Description	Ind. Parts Req.
13	802622	DGR-109	Trigger assembly	1
14	802636	DGR-122K	Trigger buttons ergo-pack (4 types)	1
14a	—	—	Trigger button A (standard)	1
14b	—	—	Trigger button B	1
14c	—	—	Trigger button C	1
14d	—	—	Trigger button D	1
15	802623	DGR-110K	Needle guide, rocker, & spring	1
16	—	—	Needle guide and rocker	1
17	—	—	Needle spring	1
18	802624	DGR-111	Spring guide	1
19	802625	DGR-112	Needle locknut	1

Ref. No.	Order No.	Model No.	Description	Ind. Parts Req.
20	802627	DGR-113-35	Needle (for .35mm nozzle)	1
21	802628	DGR-114	Cutaway handle w/pre-set	1
22	—	—	O-ring (pre-set needle knob)	1
23	802630	DGR-116	Pre-set needle knob	1
24	802631	DGR-117	1/4 oz.(7 cc) cup and lid	1
25	802632	DGR-118	1/3 oz.(9 cc) cup and lid (standard)	1
26	802633	DGR-119	1/2 oz.(14 cc) cup and lid	1
27	802634	DGR-120	Cup lid	1
28	802635	DGR-121K	DAGR repair kit	•
29	802975	DGR-12-K5	Air valve washer kit (5)	1
30	802974	DGR-18-K5	O-ring (headcap, handle) kit (5)	1

AIRBLADE™ AIR COMPRESSOR OPERATING INSTRUCTIONS

SAFETY PRECAUTIONS

WARNING

Important safety information — a hazard that may cause serious injury or loss of life.

CAUTION

Important information that tells how to prevent damage to equipment, or how to avoid a situation that might cause minor injury.

Note

Information that you should pay special attention to.

DGR-518-1 (803286) AIRBLADE COMPRESSOR

SPECIFICATIONS:

1/8 HP (94w)
120VAC, 1 Ph, 60 HZ
Number of Pistons: One
.57 CFM
68 PSI Max Pressure, Noise 53dB
1720 rpm
Shipping Weight: 4.3 kgs (9.4 lbs)

OPERATING INSTRUCTIONS

When you unpack your unit, look carefully for damage that might have occurred in transit.

ELECTRICAL REQUIREMENTS

This unit may only be used at the listed voltage. Use of low voltage will cause the motor to overheat. Low voltage can be suspected when the following conditions exist:

1. Motor does not develop full power or speed
2. Lights dim when motor starts and remain dim when starting compressor
3. A fuse blow out occurs at starting or when load is applied.
4. There are too many motor operated appliances on the same circuit, which causes them to not operate properly. To avoid excessive voltage drop keep extension cords as short as possible. If an extension cord is necessary, do not use less than 16 gauge for 25 feet, 14 gauge for 50 feet, or 12 gauge for 100 feet or more.

GENERAL INFORMATION

The maximum pressure of the compressor is 68 PSI. When spraying, the maximum operating pressure will vary depending on the size of the fluid nozzle, needle and /or air cap. For example, when spraying with the DeVilbiss DAGR™ airbrush with a .35mm fluid nozzle, the Airblade™ single piston compressor can maintain 25-30 psi operating pressure.

THERMAL PROTECTOR

The motor of this compressor is equipped with a thermal overload protector. If the motor should overheat, the overload protector will shut off the motor. If this should occur, unplug the compressor and allow the motor to cool (approx. 5 minutes), remove excess load and restart compressor. If the compressor fails to start, check for blown fuses. The compressor may need to cool further before attempting to restart. If the overload protector shuts off the motor frequently you may have a low voltage condition. See conditions under Electrical Requirements.

AUTOMATIC SHUT-OFF FEATURE

This compressor has a built-in pressure switch that will automatically shut off the compressor when the airbrush is not in use. It has been preset at the factory to give maximum pressure when the airbrush is attached to the compressor. The compressor will automatically stop when the airbrush is not in use. It will immediately begin again as soon as the air is allowed to flow through the airbrush.

SEALING OF AIR HOSE

When attaching the female pipe thread fitting from your air hose to the compressor, it may be necessary to use a quality pipe thread sealant or PTFE pipe thread tape on the threaded air outlet of the compressor. Failure to do so may cause an air leak and your compressor will not shut off as it should.

(Continued on next page)

CAUTION

This unit does not require any lubricants or oil. Applying oil to any part could result in damage to the compressor. All bearings, including those in the motor, are grease packed.

GROUNDING INSTRUCTIONS

This product must be grounded. This product is equipped with a cord having a grounding wire with a grounding plug. The plug must be plugged into an outlet that is properly installed and grounded in accordance with all local codes and ordinances.

WARNING

Improper installation of the grounding plug can result in the risk of electrical shock.

If it is necessary to repair or replace the cord or plug, do not connect the grounding wire to

either flat blade terminal. The wire with insulation, having an outer surface that is green with or without yellow stripes, is the grounding wire. If the grounding instructions are not completely understood, or if in doubt as to whether the product is properly connected, check with a qualified electrician or serviceman. If the plug will not fit the outlet, do not modify it. Have the proper outlet installed by a qualified electrician. Do not use temporary adapter plugs with this compressor.

EXTENSION CORDS

If it is necessary to use an extension cord, use a 3-wire extension cord that has a 3-blade grounding plug and a 3-slot receptacle that will accept the plug on the product. Your extension must be in good condition and not less than 16 gauge for 25 feet, 14 gauge for 50 feet and 12 gauge for 100 feet. Undersized cords will cause a drop in line voltage resulting in loss of power and overheating. The smaller the gauge number, the heavier the cord.

WARNING

Compressed air can propel dust, dirt or loose particles it comes in contact with. To prevent possible injury always wear safety goggles or glasses when using the air compressor. Never point any nozzle or sprayer toward a person or any part of the body. Always turn the air compressor off before attaching or removing accessories.

WARNING

Your air compressor is powered by electricity. Like any other electrically powered devices, if it is not used properly it can cause electrical shock. Always unplug the air compressor prior to maintenance or repair. Make sure to plug the cord into an electrical outlet with the specified voltage and adequate fuse protection.

TROUBLESHOOTING

CONDITION	CAUSE	CORRECTION
Compressor starts and stops during continuous spray use.	Your airbrush is not using enough air to prevent the back pressure buildup.	For single piston Airblade™, increase air pressure to airbrush.
Stopping and starting of the compressor when the airbrush is not in use.	An air leak in the hose-regulator connections.	See "SEALING OF AIR HOSE" instructions. A short running of the compressor for one or two seconds every five minutes is normal.