

ABOUT US ▾

SOLUTIONS ▾

SERVICES ▾

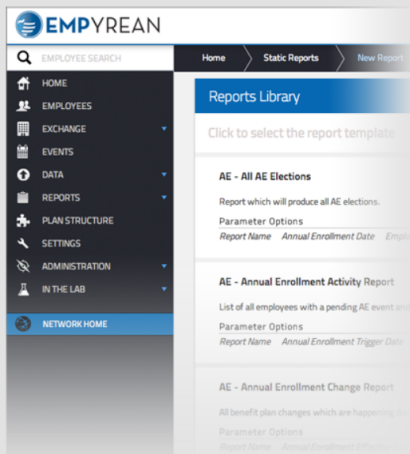
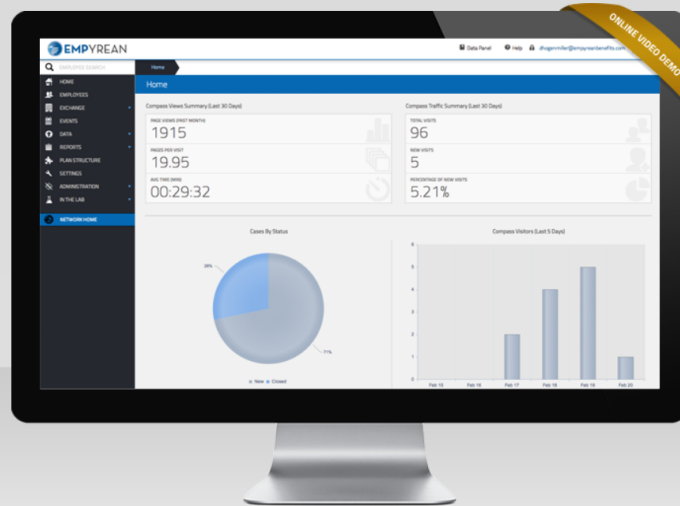
APPS ▾

CONTACT

CAREERS

The Brains of the Operation

MAP provides extensive user management capabilities to allow and track access to individual benefit information on a role defined basis.



Flex the Brain.

Our Manager Access Point is a Web application that allows human resource managers, brokers and exchange providers to directly enroll clients and manage ongoing administration. This plan administrator's tool features standard and ad hoc reporting, event and election inquiry, life-event processing, and much, much more.

The Many Features of MAP

Shared code-base across all clients for simplified updates and controls

Personalized and user specific content for targeted service

Self-service capability for more effective communication to HR Administrators

MAP has three tiers – NETWORK, CLIENT and EMPLOYER

Single User Interface to manage entire employee population and events

Advanced Decision Support

Get In Touch

| | |
|----------------------|---|
| FIRST NAME * | PREFERRED TIME TO CONTACT |
| <input type="text"/> | <input type="text"/> |
| LAST NAME * | PREFERRED DATE TO CONTACT |
| <input type="text"/> | Nov <input type="text" value="5"/> 2014 |
| EMAIL * | INDUSTRY |
| <input type="text"/> | - None - <input type="text"/> |
| PHONE NUMBER * | ADDITIONAL NOTES |
| <input type="text"/> | <input type="text"/> |
| COMPANY * | |
| <input type="text"/> | |

K

Phone

Main 281.768.2900
Toll-free 1.800.934.1451
Fax 281.768.2991

Corporate HQ

Empyrean Benefit Solutions, Inc.
9009 West Loop South,
6th Floor Houston, Texas 77096

Investor Relations

Anne Faust
Phone 832.730.7715
[Investment Email](#)

[Questions about your benefits?](#)

Please consult your company's dedicated benefits website and contact information.

[We're looking to hire. CAREERS >>](#)

