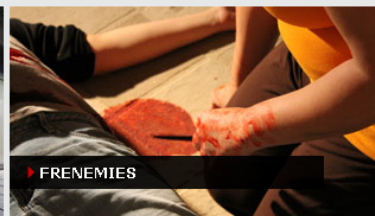


Watch on Sky Channels 553 and 554 (+1) and Virgin Media 237 and BT 887

FEATURED SHOWS



A

A Town & Country Murder
After The First 48
Arrest and Trial
At Home with the Noonans
A Killer Christmas

B

Britain's Darkest Taboos
Beyond Scared Straight
Born To Kill
Britain's Bravest Cops
Bloodwork
Britain's Biggest Heists
Battle of Wills

C

Crimes That Shook Britain
Crime Stories
Curious & Unusual Deaths
Crime 360
CCTV Cities
Conmen Case Files Season 2
Cold Case Files
Crime Scene Insects
Crime Central
Crime Town USA
Cult Killer

D

Disorder in the Court
De@th on the Web
Death Row Dates
Damilola: Death of a 10 Year Old
Diagnosis Unknown

E

Evil Up Close
Eye For An Eye

F

Frenemies
Fatal Vows

H

Hell's Bells

I

iCrime
I Didn't Do It

J

Jack the Ripper: Tabloid Killer

K

Killer Couples
Kids Who Kill

L

Louis Theroux: Law & Disorder
Leave No Trace
Living with Murder

M

Mobsters
Medical Detectives
Married to a Murderer
Manhunters
Manson
Masterminds
Murder She Solved

N

Nightmare in Suburbia
Nothing Personal: Murder for Hire

P

PRIME CRIME AT TEN
Paradise Lost
Psychic Detectives

R

The Richardsons by Fred Dinenage
Real Interrogations
The Real NCIS
Real Vice Cops Uncut
Ronnie Biggs: Secret Tapes

S

Snapped: Women Who Kill
Sins & Secrets
Steven Seagal: Lawman

T

The Devil You Know
The Squad: Prison Police
The Hunt for the Shoe Rapist
The Krays by Fred Dinenage
The 900 Women: Inside St Gabriel's Prison
The Wolf Man
To Catch A Predator
The Real Essex Boys

V

Very Bad Men

W

Wives with Knives
Witness
Women Behind Bars
Wicked Women
When Life Means Life

The First 48: Missing Persons
Fred Dinenage: Murder Casebook
The First 48
Fugitive Chronicles

G

Gangs Of Britain with Gary & Martin Kemp
Gangland

**GANGS OF
BRITAIN**

**with Gary &
Martin Kemp**

Come with us as we
delve into Britain's
dark side



FRENEMIES

Keep your friends
close and your
frenemies closer

Find out what
happens when
friendships turn fatal



**VERY BAD
MEN**

We investigate the
dark personalities of
the men we hope
never to meet

