

# MAGNET™



MAGNET solutions are available as monthly subscriptions or lifetime licenses. Trade-up programs are available for existing software license owners. Consult your MAGNET dealer for a custom quote or for more information. Or visit the MAGNET Store at [magnet-enterprise.com](http://magnet-enterprise.com).

Field	Lifetime License	Monthly License
Basic	Yes	N/A
GPS	Yes	N/A
Roads	Yes	N/A
Robotic	Yes	N/A
mmGPS	Yes	N/A
Complete (w/mmGPS)	Yes	Yes
On-board Total Station	Yes	N/A

Enterprise	Lifetime License	Monthly License
500MB	N/A	Yes
5GB	N/A	Yes

Office	Lifetime License	Monthly License
Tools	Yes	Yes
Post Processing	Yes	Yes
Site	Yes	Yes
Topo	Yes	Yes
Resurfacing	Yes	Yes

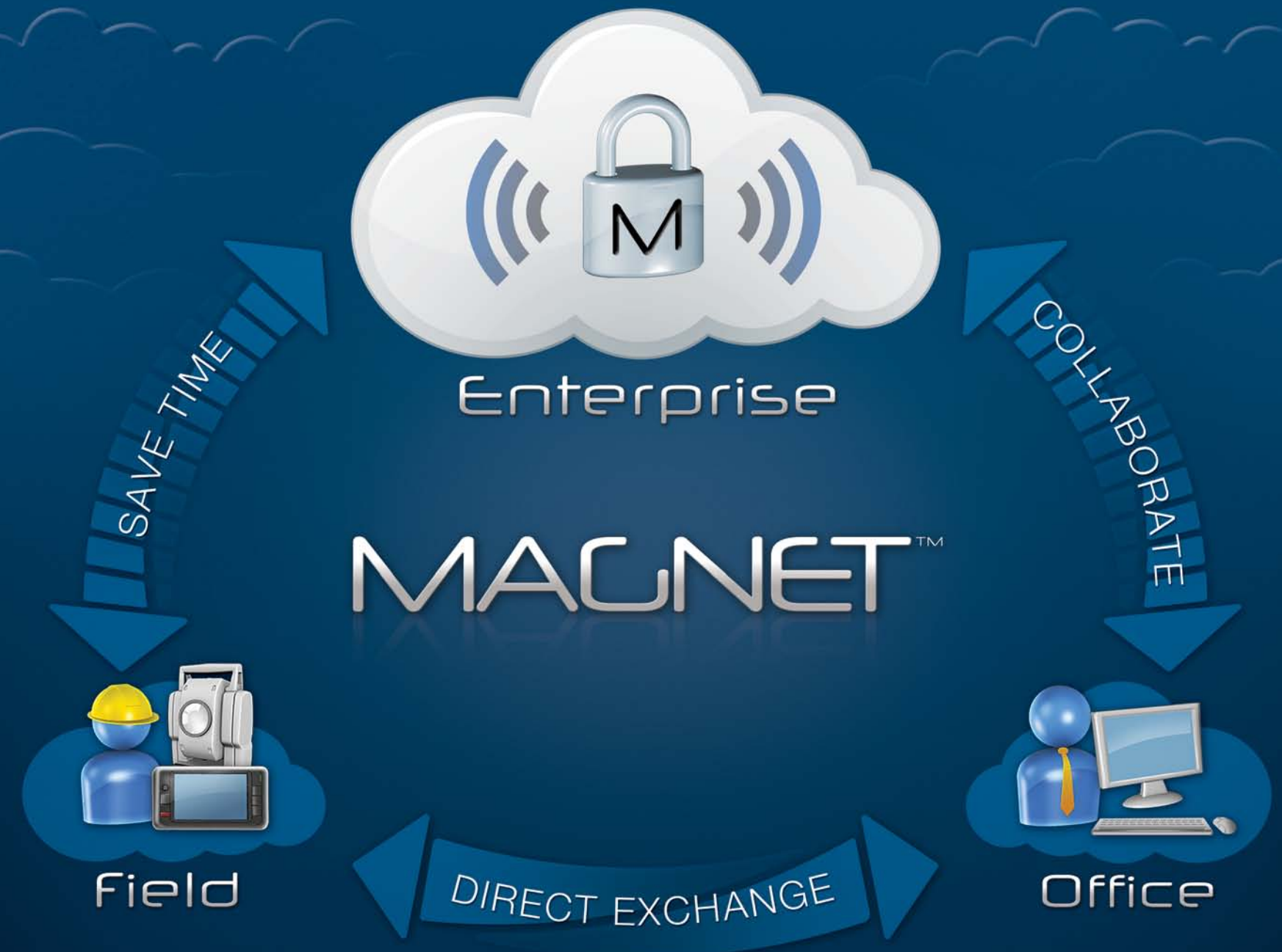
Product Maintenance	Lifetime License	Monthly License
Field	Yes	Yes
Enterprise	N/A	Yes
Office	Yes	Yes

MAGNET™  
magnet-enterprise.com

## Field and Office. Connected.

Google Maps is a registered trademark of Google. Other trademarks and trade names are those of their respective owners. Specifications and functions may change. MAGNET is a registered trademark of Topcon Positioning Systems, Inc. © 2012 Topcon Positioning Systems P/N 7010-2089 Rev. C

# INCREASED PRODUCTIVITY



The software solution that streamlines the workflow for surveyors, contractors, engineers and mapping professionals.

# Field



**MAGNET Field** is controller software that will increase your productivity and connect you to others in the field as well as in the office.

- Cloud connected data exchange and backup
- Survey: Topo, Auto Topo, X-Section
- Stake: Points, Lines, Surface, Curve, Real-Time Roads, Slope
- Calculate: Inverse, Intersection, Curves, Area, Traverse, DTM



“MAGNET Field saves me time. I don't need to drive back to the office since my boss simply gets job updates posted to Enterprise. I'm heading home early!”

# Enterprise



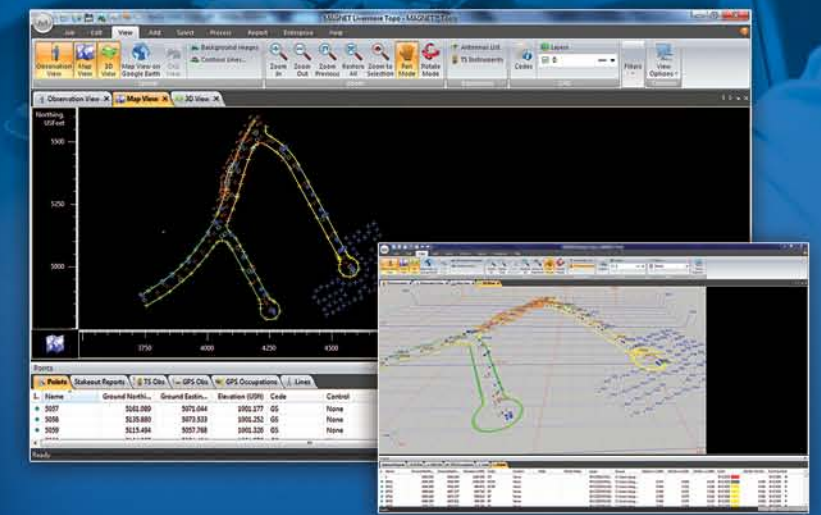
**MAGNET Enterprise** is a web browser-based environment that simplifies managing field and office data in the cloud. Track assets and communicate with everyone involved on your projects. Login from any browser for live updates. Save time and collaborate.

- Web browser access
- Map view of field data
- Live data exchange
- Data secure backup
- Chat and communicate to-do items



“MAGNET Enterprise gives my field crews and office staff the power to collaborate from remote locations. We are getting projects done faster and with fewer conflicts because my employees exchange data in the same Enterprise project.”

# Office



**MAGNET Office** is a stand-alone processing and CAD solution for surveying and grading applications.

- Office Tools as stand-alone or add on to AutoCAD®
- Office Topo for project drafting and adjustment
- Office Site for construction jobsite management and design
- Upload/Download to Enterprise
- Chat and communicate with others



“MAGNET Office is great for all our CAD stations. Office Tools installs directly into Civil 3D and I get real-time updates from the field guys. I can even Chat message to the crew chiefs if we need to make a change.”