

EXHIBIT C



BENGARD ProVa Corner



Pre-moulded inside corners eliminate the need to cut mat for corner installation. Made of polyethylene perforated to allow mortar through, the ProVa corner is the same thickness as Bengard's ProVa-Mat (0.40mm)

BENGARD ProVa-JOINT STRIP



Waterproof joint strip made of polyethylene, laminated on both sides with a fabric fibre. Tile adhesive is anchored mechanically into the fibre structure. ProVa-joint is used to seal seams and/or strengthen corners.

A High Performance Wrap for the Floor Covering Industry

- Quick, Easy & Clean to use
- Super Economy - each 1,000' roll will double to 2,000' in use
- No Adhesive Residue on Cartons or Merchandise
- Retains Original Product & Label Visibility
- Removes Without a Knife or Cutter
- Ergonomic Dispenser Handle with Free-Wheeling Film Core

Call for your nearest stocking distributor

Devonpointe LLC

Toll free: 1-888-860-0698

sales@packexe.com www.packexe.com



New Shower Tray from Schlüter

Schlüter®-Systems has developed a new 72" x 72" prefabricated, sloped shower tray (also known as KERDI-SHOWER-ST) to meet the increasing demand for larger sized showers in both renovation and new home construction. Using this tray, or any of the other three tray configurations, eliminates the need to build a sloped mortar bed when constructing a tiled shower. This method saves the builder or installer several hours of installation time on every shower project. It also eliminates the need to wait for the mortar bed to cure before waterproofing and installing tile.



The tray, which comes in 4 interlocking pieces for ease of shipping, storage, and installation, is 1-1/2" thick at the perimeter and, as with all KERDI-SHOWER-ST trays, they can be cut to size.

Also available are the 48" x 48" and 32" x 60" shower trays with centre drain placement, and a 32" x 60" shower tray with an off-centre drain placement. All four sizes are also available in the Schlüter®-KERDI-SHOWER-KIT.

A complete Schlüter®-Shower System consists of: Schlüter®-KERDI-SHOWER-ST prefabricated tray; Schlüter®-KERDI-SHOWER-SC curb; Schlüter®-KERDI waterproofing membrane; and Schlüter®-KERDI-DRAIN. When used together, these components make installation easier and eliminate the potential for mold and mildew growth.



www.schluter.com



ALL-INCLUSIVE.

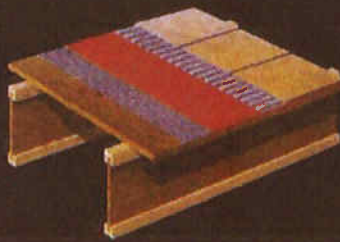
Schlüter®-DITRA, specifically designed as an under-layment for ceramic and stone tile, provides the four essential functions that ensure a lasting tile installation.

Uncoupling: Eliminates the major cause of cracking and delaminating of the tiled surface.

Waterproofing: Protects moisture-sensitive substrates.

Vapor Management: Provides a route for excess moisture and vapor to escape from the substrate, allowing it to breathe.

Support: Virtually incompressible within the tile assembly, allowing the installation to support and distribute heavy loads.



- Ideal for use over various substrates, including wood, concrete, gypsum-based screeds, heated floors, and more.

- For use in both interior and exterior applications.

The Schlüter®-DITRA Installation Handbook is a comprehensive guide for successful ceramic and stone tile installations. It contains complete details for installations over various substrates, including illustrations showing each component of the tile assembly. The Handbook also includes a wealth of information on topics such as waterproofing, movement joints, thin-set mortars, etc. For additional information, or to obtain or download a copy of the DITRA Installation Handbook, please visit our website at schluter.com, or call 1-800-667-8746.

Products/Great Finds

Custom builders share their latest product finds.

Keith Stephenson

Sandy Spring Builders, Bethesda, Md.

Mold and mildew prevention is a big issue these days, and two of the top products for Keith Stephenson, the director of operations for Sandy Spring Builders, have to do with preventing water infiltration.

The first, Schluter Systems' Shower Kit, stops water from penetrating into a tiled shower's wallboard. The system—which includes a shower tray, shower curb, waterproofing membrane, waterproofing strip, and drain—bonds directly to the mortar bed to protect it from being saturated with regular use, and also comes in a convenient, complete package, Stephenson says.

For outside the home, InBox weatherproof outlet boxes by Arlington Industries have weatherproof flanges that stop water penetration. There are different boxes available for stucco, fiber cement, brick, and more.

Finally, Stephenson likes Lepage Millwork's windows for their looks and versatility. After he went to a custom millshop for historic windows, he realized Lepage could have done the same thing in less time. Now, he uses the company for those types of projects.

■ Schluter Systems, 800-472-4588, www.schlutersystems.com, Circle 180 ■ Arlington Industries, 800-233-4717, www.arlington.com, Circle 181 ■ Lepage Millwork, 800-463-1387, www.lepage-millwork.com, Circle 182



Omni Pro II
AUTOMATION

Integrated
Security
& Control
System

HAI

Ahmed Abdelaziz

Omnia Home Builders, Chicago

To stand out from other custom builders, Ahmed Abdelaziz, CEO of Omnia Home Builders, went high-tech. He includes full automation standard in all his homes through a variety of products, resulting in a wealth of features for homeowners.

One product Abdelaziz uses is the OmniPro II from HAI. Designed for large residences, the home control system can include more than lighting, security, and whole home audio. It can also feature communicating thermostats, temperature sensors, and humidity sensors for energy control, video surveillance that can be monitored in real time via the Internet, a cell phone, or PDA, and telephone access, so a homeowner can remotely turn off lights, receive security alerts, and more.

"The most unique part is the ability to monitor your babysitter or your teens in a live feed," says Abdelaziz of his home package.

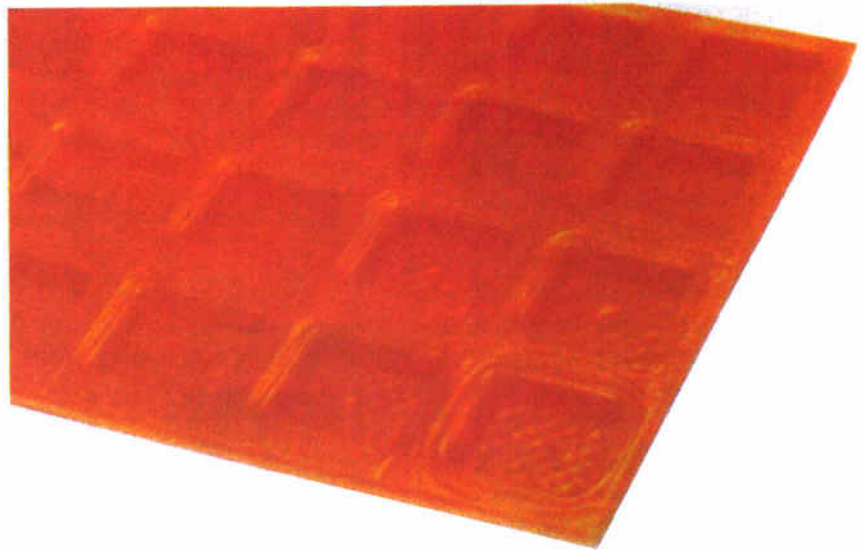
For audio, one product he uses is the RNET CAM6.6 multi-room receiver by Russound. The receiver plays music from up to six radio sources in each of six different rooms. Multiple receivers can link together for additional rooms, and the system has keypads and touchscreens. Options include a built-in AM/FM tuner or built-in XM Satellite Radio. —Melvin Markwitz

■ HAI, 800-229-1256, www.haiauto.com, Circle 183 ■ Russound, 866-222-6997, www.russound.com, Circle 184

square notch design. Note the thinset mortar should be mixed to a fairly fluid consistency (a bit thinner than normal), but still be able to hold a notch.

Next, apply the DITRA to the floor, fleece side down. Solidly embed the matting into the bonding mortar using a float or screed trowel and good, even pressure. For joining sections of the product, simply butt sections of adjoining sheets. Raise a corner of the matting to check coverage. Proper installation results in full contact between the fleece backing and the thinset mortar.

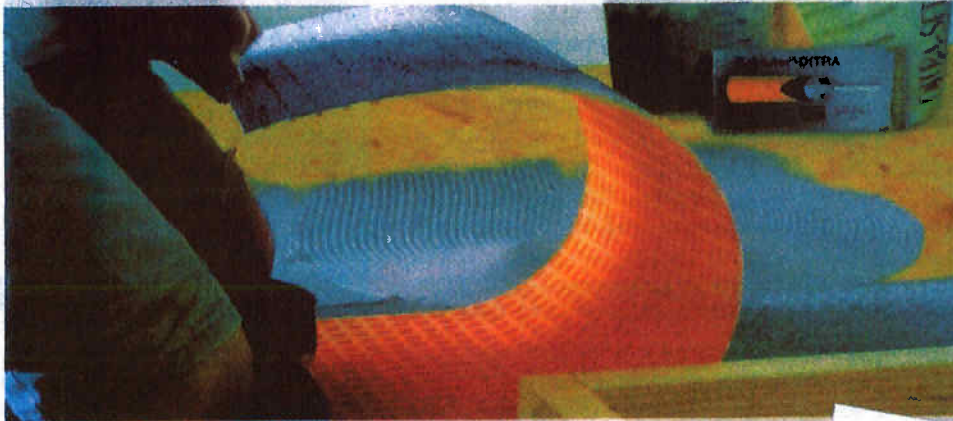
Tile can be installed over the underlayment immediately; no need to wait for the mortar to cure. Fill the cut-back cavities with unmodified thinset mortar and comb additional mortar



Schluter DITRA is a flexible, grid-like underlayment with fleece backing and square cavities that form column-like mortar structures for excellent load distribution.

Schluter®-DITRA

The Universal Underlayment Specifically Designed for Ceramic and Stone Tile



The **Schluter®-DITRA Installation Handbook** features 17 installation details with illustrations, movement joint guidelines, our no-nonsense 5-year warranty, and more.

For your free copy of the DITRA Installation Handbook, visit:

www.schluter.com or call 1-800-472-4588



PROFILE OF INNOVATION

- Schluter®-DITRA provides uncoupling, which eliminates the major cause of cracking and delaminating of the tiled surface
- Waterproofing protects material beneath the tiles
- 95% lighter than cement backerboard or plywood
- Ideal for use over various substrates, such as plywood, OSB, concrete, gypsum, and existing vinyl flooring; used in both interior and exterior applications
- Only 1/8" thick
- Quick and easy to install: no special tools or fasteners necessary; tiles can be applied immediately after DITRA



iReno

There are no apps for this

Bathroom: a No-Flood Zone

STORY AND PHOTOGRAPHS **Brenda McMillan**

I have been renovating my house with my partner and our cat for years. We are (slow) do-it-ourselfers with a Mike Holmes-esque penchant for perfection, and skills in completely other fields. You would think that would be a recipe for disaster, but to date, we have not maimed, destroyed, ruined or electrocuted anything, anybody or any feline, and our house looks, feels and smells pretty good. But now we are renovating the main bathroom, and are in over our heads.

One of our outside skills is research. Partner dearest always reads everything available before starting a project so that when I ask tricky questions, like "Do we need flood insurance?" he can confidently say, "No need for it – our shower will be more waterproof than a seal." He then goes on to explain (with supporting videos) how we were going to achieve this through the use of a **Kerdi waterproofing system made by Schlüter®**. There are others, but I have to admit, the vids made this look pretty easy, and as the company produces an impressive range of products from bulk membrane sheeting to inside and outside corners, shower bases and a drain, it seemed like a no-brainer.

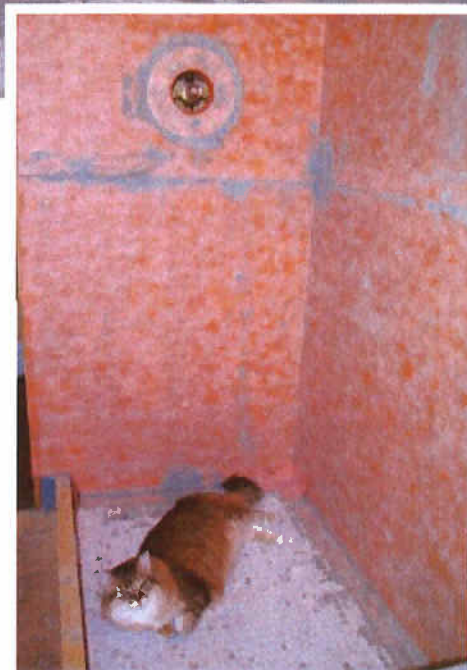
In preparation, we hired licensed pros for the plumbing and wiring because all the research in the world will not qualify us to undertake those jobs. The window in the bathroom was also replaced, and the walls insulated and drywalled (we did that). We removed the rotting cedar plank floor and put marine-grade plywood over the existing one-inch subfloor to even it all out. The shower base was next.

I should explain that the bathroom in our century home is exceptionally small. I mean, you can sit on the toilet and rest your forehead

on the sink (not that I've ever had too much to drink and have done that, mind you), and the old cast-iron tub was so cramped that it took contortionist moves to get to every body part. **Our plan was to replace the tub with a shower**, but it would need to be an angled shape, so the base would have to be customized. Fortunately, the foam Kerdi tray (base unit) could easily be cut to measure. We stuck it to the (level) subfloor with the unmodified thinset mortar recommended in the videos. The base slopes towards the drain, so we didn't have to worry about that. Then we installed the Kerdi drain, a system designed to trap all water and make sure it ends up where it should. It is a little forgiving, which is a blessing. On to walls.

The orange waterproof Kerdi membrane has a slightly furry coating that bonds to the mortar. The video says to put the mortar on the wall with a trowel, lay the Kerdi membrane on top, and then push the excess mortar out of the edges. Ha! It took two of us – one holding the membrane on the wall (it wanted to pee off on our heads) and the other with the trowel pressing out the squishy mortar. The second and third pieces, which overlap each other, went on easier. We went on to fit specially-designed Kerdi pieces around the shower control and showerhead pipe. It was looking good!

With the walls done, it was time to tackle the angled base. My partner, who likes origami, fashioned some custom corners out of scraps of the Kerdi membrane. For the rest, we used the nifty inner and outer corners made by the company. We covered the base and edges with the Kerdi membrane and corners, and had a sealed unit when we were done. No water or moisture will ever penetrate. That makes me feel good because it means that there will never be mould growing back there either.



Here's what we learned: mix just enough unmodified thinset mortar to put one piece of Kerdi on the wall. You will need a tall pail and a mixing attachment on a drill to quickly buzz up the mortar. If you make too much it hardens and has to be tossed out. Make sure you wash all tools and the pail as soon as you are finished or you'll be tossing those as well! And as the mortar tends to stick to curious pets*, check them also.

The cost of the Schlüter® Kerdi system bought as individual pieces, the thinset mortar and the trowels totalled about \$650. It would have been more if we'd decided to tile the floor, (and use the Schlüter® Ditra system, a partner to Kerdi) but we opted for hardwood instead.

Spending the money and taking the time to waterproof may seem extravagant when we could have just used cement board alone, but it brings a great feeling of security knowing that water won't ruin the (new) kitchen below the bathroom. "As waterproof as a seal" is just what I had in mind.

Next on iReno: Tile it Yourself. There IS an app for that!

*No cats were harmed in the writing of this article. GL



1. The bathroom corner is insulated, sound-proofed and ready for the waterproofing membrane

2. Schluter Kerdi-Board is also used outside of the shower where the vanity and light fixture will be installed

3. A custom soap niche is constructed and all plumbing penetrations are sealed with rubber gaskets

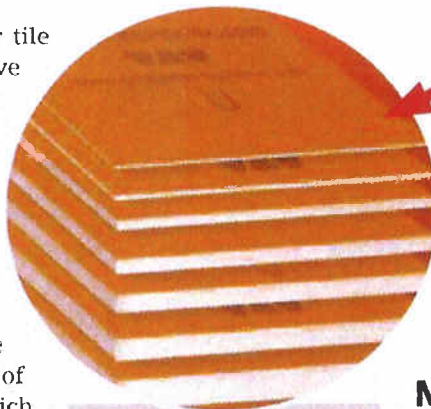
4. Wall joints and corners are sealed and a Panasonic ceiling fan is installed to provide adequate ventilation



and a license requirement for tile setting, where does that leave you in terms of making sure your job is done right?

One good indication is to look for a professional who is a member of the Terrazzo, Tile and Marble Association of Canada (TTMAC) or the National Tile Contractor's Association (NTCA) in the U.S. Burton is on the board of directors of the TTMAC, which publishes standards and specifications about proper installation techniques, including bathroom waterproofing. Members' work is subject to periodic inspections by the association, and if it's not to snuff, the person loses membership. While a TTMAC membership isn't a license, per se, it's a strong indication that a tradesmen is aware of proper techniques.

In the US, the National Tile Contractor's Association has a similar role. According to Jim Olson, the Assistant Executive Director of NTCA, the organization promotes certification and instructs installers in proper tile and bathroom waterproofing procedures. He warns, "In states where there is no li-



What is Kerdi-Board?

Kerdi-Board is a substrate material made from extruded polystyrene foam. It not only provides a waterproof base for tile installation, but it also corrects surface imperfections so the tile base is perfectly level and plumb.

encing procedures, anyone with a business card can do an installation. Always ask what kind of training or certification a contractor may have."

Another cautionary note: Beware if a contractor tells you that he wants to use water-resistant drywall, sometimes known as green board, in the wet areas in your bathroom. The product is no longer considered an acceptable substrate for tile in wet areas or other bathroom finishes by experts, although Olson says some contractors still try to use it.

MORE FIXTURES MEAN MORE POTENTIAL FOR LEAKS

Today's bathrooms have more fixtures than in the past, and in more forms than ever before. Steam showers, multiple showerheads, sinks, whirlpool tubs, even bidets and urinals, are more common as master bathroom suites have become the norm. And each of these fixtures can be a potential leak point. Worse, some create excessively damp conditions for a bath.

"Liquid water from sinks, showers and drains is one concern," says Burton. "But water vapor from long showers and particularly powerful steam showers is even more invasive." Steam's ability to get into every nook and cranny is one of the reasons it's used for deep cleaning commercial kitchen equipment and grimy automobile engine blocks. But in a bath this unique ability can breed mold. For this reason, as nice as steam showers might feel, Mike thinks they should never be installed in residential baths.

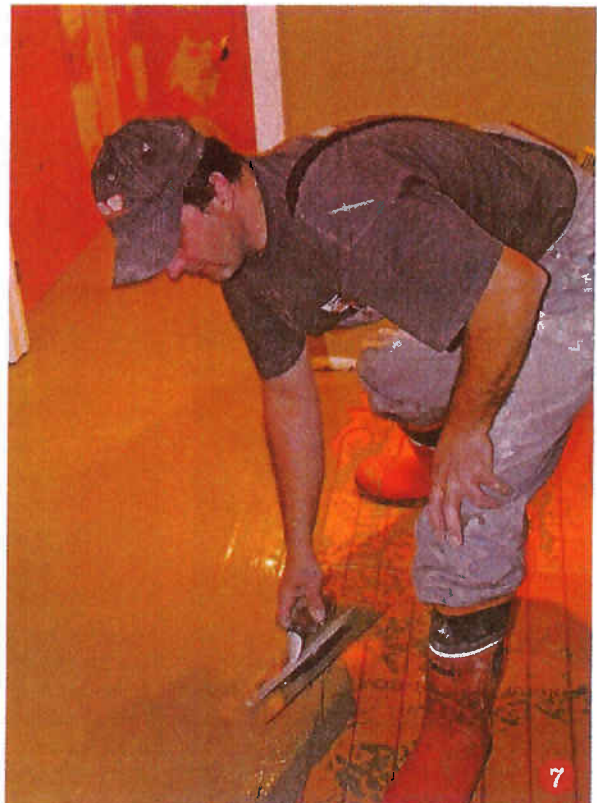


5. Kerdi-Board surrounds the toilet flange and acts as a barrier between the concrete slab and the radiant heat wires



6. Nuheat electrical wires provide a heated floor for the entire bathroom, and the Kerdi-Board acts as an insulator to keep the heat from being drawn down into the concrete slab

7. Burton embeds the custom wires in a leveler thinset to protect the wires and prepare the surface for tile installation



NOT ALL BATHROOM SURFACES ARE WATERPROOF

You'd be mistaken if you thought that tile alone would keep out water. In fact, most stone and ceramic tiles are not waterproof. They're rated for porosity, an indication of how much water they will absorb. And most grouts—the sandy substance that's pushed into the joints between tiles during an installation—aren't waterproof either.

Walls and other vertical surfaces aren't as problematic as floors because the water can run off quickly, but standing water on floors are leaks waiting to happen. Same thing is

NEW PRODUCTS REQUIRE NEW SKILLS

In the past, walls and ceiling were covered with several layers of plaster, applied to thin wood strips called lath. Plaster is relatively non-absorbent, and although it should not get wet, it typically dries without degrading.

And tile was typically set on a very thick layer of concrete mortar, screeded over expanded metal lath and heavy-weight tarpaper for both walls and floors. Known in the trades as a mud job—the mortar being the mud—it's a technique that's rarely used anymore. "It's a dying art," Bur-

500 Average number of gallons a showerhead leaking 10 drips per minute will shed per year. —EPA

true whenever two dissimilar materials meet, such as where a tiled wall meets the edge of a cast iron tub or where a tub meets the floor. And any penetration through a finished surface—plumbing pipes for showerheads and mixing valves or faucets—can also be leaks waiting to happen.

Diligent and periodic sealing of tiled surfaces can help keep water out, but the fact remains that water can get through tile, and once it gets through, it's going to keep going, unless the sub-surface layer under and behind it is waterproof.

ton says. "The older tradesmen, skilled in these techniques are mostly retired now."

Today, tile is usually installed over a layer of thinset. After it's cured, tiles are grouted, then sealed, as in the past.

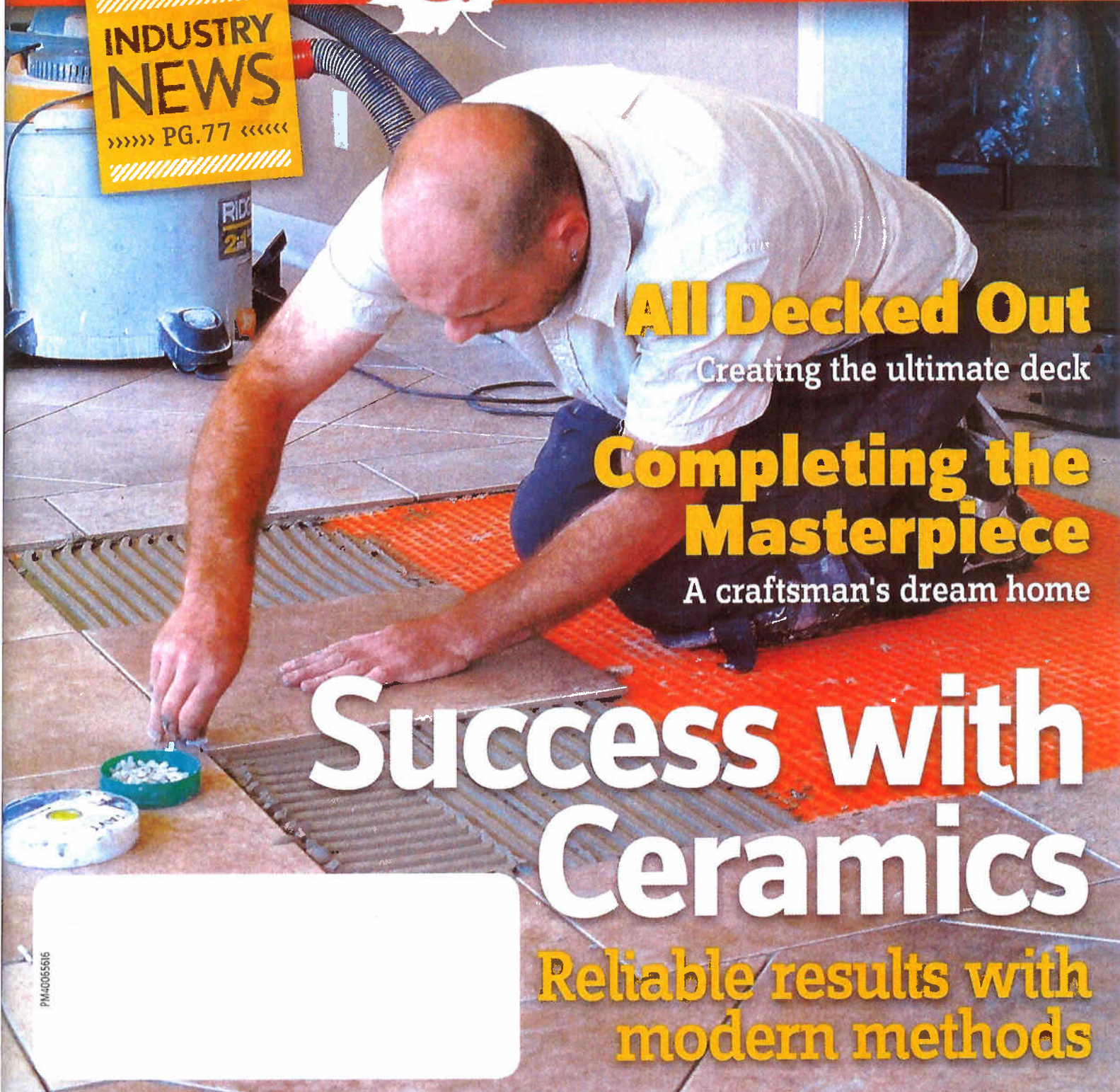
The new products from several companies, including Schluter, Lattacrete, Blanke and Noble, include elastomeric membranes, tapes, backerboards, underlayments, waterproof pans, and whole systems comprised of everything needed to make sure that liquid and vaporous water are contained from getting inside the walls of a bathroom.

HOMES[®] & COTTAGES

www.homesandcottages.com

ISSUE 4.2011
\$4.95

**INDUSTRY
NEWS**
»»»» PG.77 ««««



All Decked Out

Creating the ultimate deck

**Completing the
Masterpiece**

A craftsman's dream home

**Success with
Ceramics**

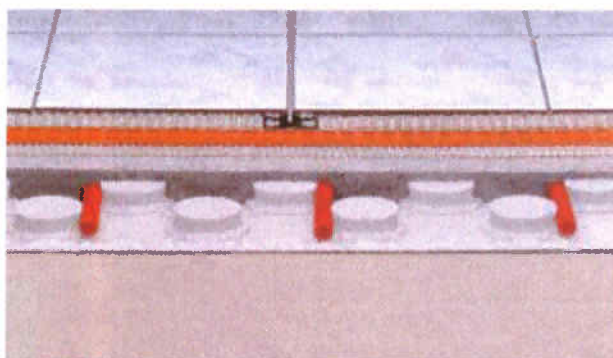
**Reliable results with
modern methods**

PM40055016

Schlüter Systems

La compagnie allemande Schlüter Systems est un leader dans le domaine des solutions techniques pour la pose de carreaux, notamment pour les planchers chauffants ou pour les douches.

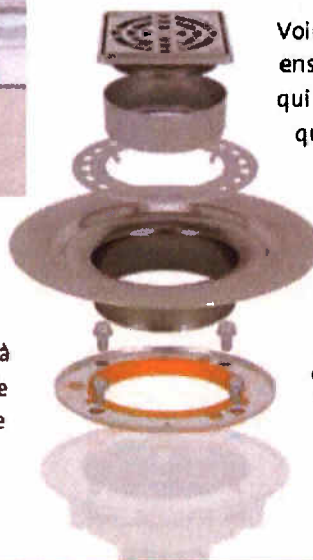
Schlüter-BEKOTEK est un système complet permettant la réalisation de chapes flottantes ou chauffantes, n'entraînant pas de fissuration du revêtement céramique ou de pierre naturelle. Ce système s'articule autour du panneau de chape à plots en polystyrène expansé *Schlüter-BEKOTEK-EN* qui se pose directement sur le support porteur ou sur des panneaux d'isolation thermique et/ou phonique standard.



La géométrie du panneau à plots *Schlüter-BEKO-TEC-EN* permet d'obtenir une épaisseur de couche minimale de chape de 32 mm entre les plots et de 8 mm au-dessus des plots. Les plots sont conçus de sorte à permettre le calage de tubes de chauffage de 16 mm de diamètre avec un pas de 75 mm, pour la réalisation d'une chape chauffante.

Du fait du volume comparativement faible de chape à chauffer ou à refroidir, le chauffage par le sol se distingue par sa simplicité de régulation et sa capacité à fonctionner avec de faibles températures de départ et de retour à la chaudière. Le retrait qui se produit pendant la prise de la chape est réparti entre les plots et déclenche une microfissuration, annulant les contraintes. Il est ainsi possible de se passer de joints dans la chape. La natte de découplage *Schlüter-DITRA* peut être collée dès qu'il est possible de marcher sur la chape en ciment.

Les carreaux en céramique ou les dalles de pierre naturelle sont ensuite collés directement sur la natte *DITRA*. Des joints de mouvements doivent être réalisés avec *Schlüter-DILEX* dans la couche de revêtement. Des revêtements insensibles à la fissuration tels que le parquet ou la moquette peuvent être posés directement sur la chape une fois que l'humidité résiduelle demandée est atteinte.



Voir dans **IMB** de juin 2010 le nouvel ensemble d'adaptateur *Kerdi-Drain* qui résout une problématique fréquemment rencontrée lors de la construction d'une douche en céramique qui permet d'utiliser le drain existant avec les membranes d'étanchéité collées. L'ensemble d'adaptateur est compatible avec la plupart des drains à anneau de serrage traditionnels commerciaux et résidentiels. **IMB**

FALCON
WATERFREE TECHNOLOGIES

Les urinoirs sans eau en porcelaine CSA exigez l'original, méfiez-vous des imitations

Champagne Marketing
714 Jacques Cartier Ouest, Longueuil, Qc. J4L 2S3
Tél.: 514 949 9540; Télécop.: 450 670 8197
faloon@champagnemarketing.com; www.faloonwaterfree.com

PRODUITS DE VENTILATION

HCE

Tél.: (514) 643-0642 Sans frais:
Fax: (514) 643-4161 1 (888) 777-0642
6150 des Grandes Prairies, Montréal, (QC) H1P 1A2

Beacon - Safe Egress That Can Be Seen, Heard And Trusted

SARCENT introduces Beacon™, a next generation exit device that creates a clearer pathway to safety during an emergency. It's the newest addition to the ASSSA ABLOY LiteGuide™ family of products.



Beacon is more than an exit device. The combination of audible and visible alerts built into the exit device makes Beacon unique and effective. Connected to the building's alarm system, when activated it emits a pulse of light and white noise followed by an audible message declaring 'exit located here'. A laser light beamed from the exit device forms an arrow shape pointing directly to the illuminated touch bar, allowing occupants to locate the exit and get out quickly. Beacon makes the opening highly noticeable for all occupants, including those who are hearing or sight impaired.

Beacon integrates with existing fire-alarm systems. It is easy to install with standard ElectroLynx connectors. It is fully programmed at the factory so there is no need for field configuration. Virtually maintenance-free, Beacon retrofits to most 80 Series exit devices.

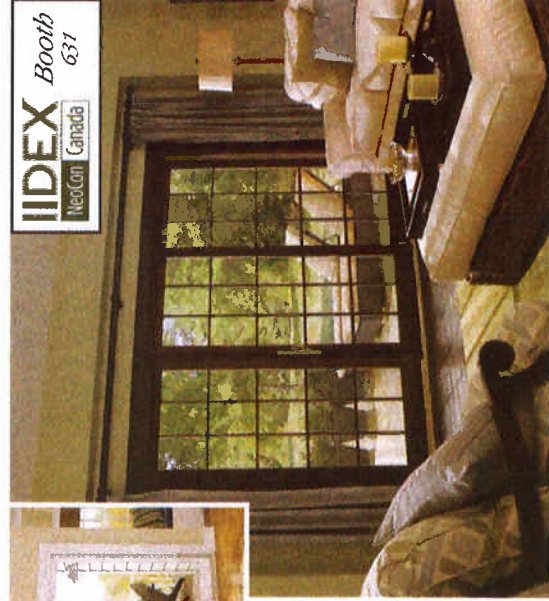
Enter Information No. 6774 on Enquiry Card

Introducing The Fibreglass Sliding French Door from Marvin

The Sliding French Door marks the first door introduction to Infinity's family of windows. The combination of an Ultrax™ fibreglass interior and exterior, smooth operation, and elegant hardware design, makes the Sliding French Door from Infinity the perfect complement to Infinity windows.

Infinity windows and doors are made from Ultrax, inside and out. This fibreglass material is so durable, so long lasting, and so strong, that they'll never need replacement. Best of all, it makes them essentially maintenance free.

The Infinity Sliding French Door is available in five different exterior colours: Stone White, Sierra, Pebble Gray, Cashmere and Bronze. The inside is white or EverWood, their new interior wood grain finish that looks, feels, paints and stains like wood. The unique handle set has a multi-point locking system with an anti-slam feature and forms a secure, weather tight seal. The set is available in standard Stone White or Satin Taupe. Optional handle set finishes of Brass, Oil Rubber Bronze and Satin Nickel provide maximum protection against the elements.



IIDEX Booth 651
MedCon Canada

Enter Information No. 7037 on Enquiry Card

Schluter®-DITRA-XL Provides An Even Transition



DITRA-XL is a new uncoupling membrane specifically designed to provide solutions to problems faced by tile setters and flooring installers. The increased thickness of the product allows for an even transition between typical ceramic tile and 3/4 inch thick hardwood flooring.

DITRA-XL provides the same four essential functions as Schluter-DITRA – including uncoupling, waterproofing, vapour management, and support/load distribution – but is 5/16 inch thick compared to DITRA at 1/8 inch thick. Every roll of DITRA-XL and DITRA comes with the 2008 Schluter-DITRA Installation Handbook with over 20 details and illustrations for installing tile over various substrates.

Enter Information No. 8635 on Enquiry Card

Support de pose universel signé Schluter®-Systems

Un nouveau support de pose universel a été développé par Schluter-Systems, leader en solutions d'installation pour carreaux de céramique et pierres naturelles. L'innovateur et unique système *Schluter®-KERDI-BOARD* est à la fois un substrat, un panneau de construction et une solution d'étanchéité collée. *KERDI-BOARD* permet aux carreleurs de concevoir un support de pose idéal de façon simple et facile. Ceux-ci bénéficient alors d'un plus grand contrôle sur leurs projets de carrelage.

Tant dans la construction neuve que dans la rénovation, de nombreux supports de pose ne conviennent pas aux revêtements carrelés, spécialement dans les zones humides. Cela entraîne fréquemment des travaux de préparation supplémentaires, notamment des travaux d'imperméabilisation. Lors de rénovations, *KERDI-BOARD* permet de réaliser un support de pose prêt à carrelé de façon simple.

KERDI-BOARD s'installe sur tous types de surfaces murales. Il peut être ancré pleine surface, ou à l'aide de plots de ciment-colle sur de la maçonnerie, du béton, des murs plâtrés, des carreaux existants, de la peinture, etc. *KERDI-BOARD* se fixe sur des montants en bois ou en métal avec des vis et des rondelles de fixation. Il peut aussi être utilisé comme panneau de construction afin de réaliser des structures autoportantes pour un revêtement carrelé.

KERDI-BOARD est fait à partir d'une mousse de polystyrène extrudé recouverte sur chaque face d'une couche d'un renfort laminé et d'un feutre non-tissé pour faciliter l'ancrage dans le ciment-colle. Une grille de découpe carrée est imprimée sur une des deux faces du panneau. Il est exempt de ciment et de fibre de verre, ce qui rend son découpage facile, précis et sans poussière à l'aide d'un couteau utilitaire. *KERDI-BOARD* est exceptionnellement léger et facile à manipuler.

Les panneaux sont offerts en sept épaisseurs : 3/16 po, 3/8 po, 1/2 po, 3/4 po, 1 1/8 po, 1 1/2 po et 2 po. Il y a donc un panneau pour presque toutes les applications.

Douches, douches vapeur et contours de bain carrelés.

KERDI-BOARD est imperméable, pare-vapeur et adéquat pour un usage dans un système d'étanchéité collée, tel une douche ou un contour de bain carrelé. Dans de telles installations, les panneaux *KERDI-BOARD* remplacent les panneaux de cloison sèche. De là, les bandes et les coins d'étanchéité sont installés afin de sceller l'assemblage avant l'application des carreaux.



Bains podiums

Ils ne cessent de grandir en popularité. Or, la plupart des matériaux utilisés pour construire le podium sont sensibles à l'humidité et requièrent des travaux de préparation supplémentaires avant de procéder à l'installation des carreaux. Grâce à *KERDI-BOARD*, il est possible de réaliser de façon simple et rapide des substrats imperméables prêts à carrelé.

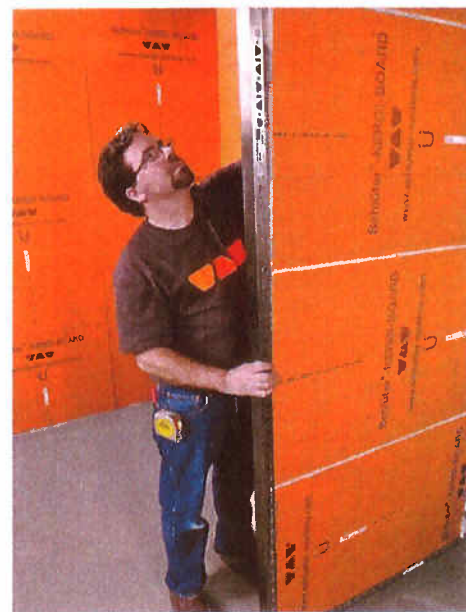


Vanités et étagères

KERDI-BOARD est le support de pose idéal pour la réalisation de vanités, de tablettes et d'étagères carrelées. L'utilisation de *KERDI-BOARD* comme panneau de construction permet de concevoir des structures de vanité expressément pour le carrelage de façon simple et rapide.

Cloisons de division

Celles-ci sont utilisées pour séparer des douches, des toilettes publiques ou pour diviser une pièce. La réalisation de telles cloisons en maçonnerie ou en ossature est un travail généralement long, et bien souvent, les surfaces ne sont pas utilisables comme support de pose sans travaux préalables.



Habillage de tuyauterie et colonnes

Les habillages sont réalisés de façon simple et facile en utilisant les panneaux dotés d'un angle préfabriqué et en forme de U inclus dans la ligne de produits *KERDI-BOARD*. Ces panneaux sont livrés à plat et pliés avant l'installation à l'aide d'un ruban adhésif double face.

Éléments de design ronds et courbés

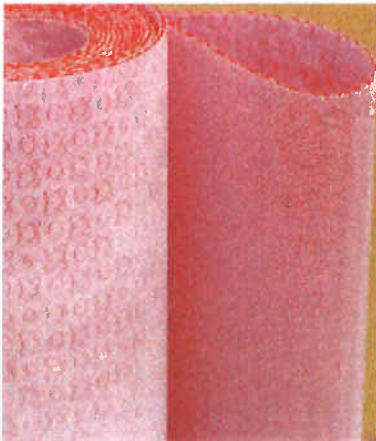
En utilisant *KERDI-BOARD-V*, un panneau doté de rainures verticales, est idéal pour créer des cloisons autoportantes, des murs, des podiums de bain, des habillages de colonnes et autres panneaux de supports arrondis.





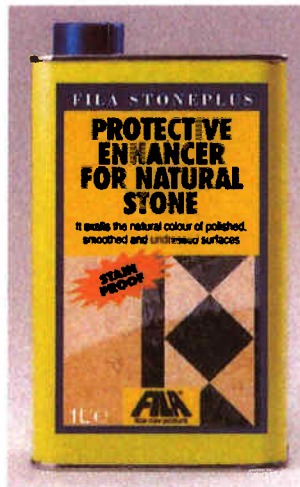
152 ARCHITECTURAL METAL COATINGS MOSAIC TILES

Architectural Metal Coatings: Tiles, mosaics, decorative pieces Architectural Metal Coatings has launched a new line of metal tiles, mosaics and listellos in bronze, brass, copper and white bronze finishes. According to the company, “the tiles feel fully metal and are even cold to the touch.” The company also offers custom metal moldings. *For details, circle 152 on the Reader Inquiry Card.*



150 PROVA-FLEX UNDERLAYMENT FROM LOXCREEN

ProVa-Flex from Loxcreen a new tile, stone underlayment The Loxcreen Flooring Group presents ProVa-Flex, a multi-functional polypropylene underlayment for use in ceramic and stone installations. The product also acts as an “uncoupling” membrane on all suitable substrates and can help prevent substrate moisture. *For details, circle 150 on the Reader Inquiry Card.*



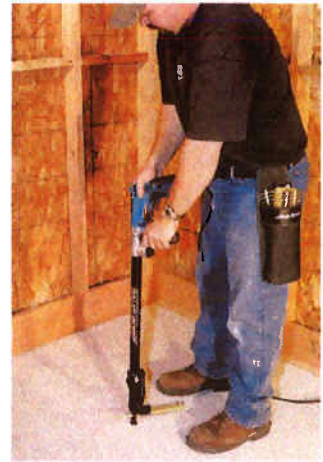
148 FILA STONE PLUS

Fila Stone Plus designed to protect, brighten stone Fila Stone Plus, from Fila Floor Care Products, is formulated to enhance a stone’s “tone and value” while protecting it from stains and UV damage. The surface can be used just eight hours after the first application, according to the company. *For details, circle 148 on the Reader Inquiry Card.*



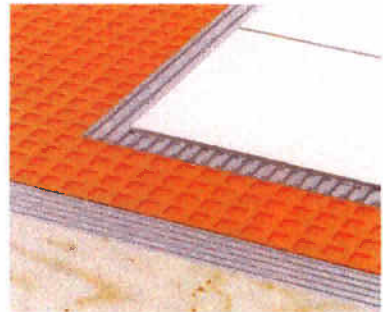
140 REVIGLASS GLASS TILE.

Reviglass mosaics offered in five mounting options Reviglass offers a wide range of 100 percent recycled glass mosaics. Products are offered in a choice of 250 colors and four sizes (1/2”, 1”, 1 1/2” and 2” squares). Additionally, five mountings are available, including the new Polyurethane Cord. The company also offers customized blends, special design and luminescent looks. *For details, circle 140 on the Reader Inquiry Card.*



146 A CONTRACTOR USING SIMPSON STRONG-TIE'S QUIK DRIVE SYSTEM.

Simpson Strong-Tie adds ‘Quik Drive’ tool The Quik Drive PROCGB Combo System is new from Simpson Strong-Tie. The Quik-Drive tool is an all-in-one, motorized fastening system for tile underlayment that features an auto-feed design. Collated screws enable quick and easy fastening, and an extension allows contractors to stand during installation, the company says. *For details, circle 146 on the Reader Inquiry Card.*



144 SCHLUTER-DITRA-XL MEMBRANE

DITRA-XL membrane is Schluter’s latest Schluter Systems introduces the Schluter-DITRA-XL uncoupling membrane. In addition to uncoupling, the product also provides waterproofing, vapor management and support/load distribution, the company says. DITRA-XL is 5/16” thick. *For details, circle 144 on the Reader Inquiry Card.*



Company Name: Grout Boost
Address: 1105 S. Frontenac St.,
 Aurora, IL 60504
Phone: (630) 952-1383
URL: www.groutboost.com
Email: Lauren.fontela@hbfuller.com
 Grout Boost®, the revolutionary stain resistant grout additive, introduces the latest advancement - Grout Boost Advanced Pro. With mold and mildew product protection, it mixes with grout in place of water to protect against stains, eliminating the need to seal and it is backed by a 20-year stain protection limited warranty.

Coverings Booth #3735



Company Name: National Applied Construction Products, Inc.
Address: 3200 S. Main St.,
 Akron, OH 44319
Phone: (330) 644-3117
URL: www.nacproducts.com
Email: nduve@nacproducts.com

Visit NAC Products at Coverings Booth #2642 and don't miss out on a chance to see Marmox-NACbacker, the newest line of lightweight, waterproofing backer boards, shower pans and full shower kits! Come see ECB Green, the first and only independently tested "green" self-adhering, crack isolation membrane on the market. See our LIVE installations on the TCNA Stage!

Coverings Booth #2642



Company Name: Schluter Systems
Address: 194 Pleasant Rd.,
 Plattsburgh, NY 12901
Phone: (800) 472-4588
URL: www.schluter.com
Email: info@schluter.com

The Schluter®-KERDI-BOARD system serves as a substrate, building panel, and bonded waterproofing solution. It can be used to create an absolutely flat substrate with precise corners that is immediately ready for tile. Available in seven thicknesses, it can also be used as a building element to construct free-standing structures for tile coverings.

Coverings Booth #3233



Company Name: Tavy
Address: 225 Oakland Rd.,
 South Windsor, CT 06074
Phone: (800) 367-8289 (800-FOR-TAVY)
URL: www.tavytools.com
Email: skip.starks@tavytools.com

THE BEST JUST GOT BETTER
 TAVY Enterprises, LLC, has done it again. Armen Tavy is proud to introduce his NEW "4-Corner View" TAVY Tile Spacer. This design is still the top-selling circular 2-sided spacer that has become so popular with professionals & do-it-yourselfers everywhere, but now the "4-Corner View" allows for easy viewing of all tile corners at each intersection. No more guessing how the corners are lining up, simply pack the tile tight against the TAVY Spacer and you can see for yourself that the corners are lined up perfectly...every time. Still available in seven color-coded sizes, the TAVY "4-Corner View" Tile Spacer is the next great innovation in the evolution of tile setting tools manufactured by TAVY.

Coverings Booth #2635



Company Name: TEC
Address: 1105 Frontenac St.,
 Aurora, IL 60504
Phone: (630) 952-1383
URL: www.tecspecialty.com
Email: Lauren.fontela@hbfuller.com

TEC® 3N1™ is ideal for heavy, large format floor or wall tile installations featuring a formula with no-slip, no-slump performance that is easy to trowel. TEC 3N1 latex modified mortar, made using recycled materials, provides 50 lbs. of coverage in a 30-lb. bag and a 25-year limited warranty.

Coverings Booth #3028



Company Name: Tiles of Spain
Address: 2655 Le Jeune Rd., Ste. 1114,
 Coral Gables, FL 33134
Phone: (305) 446-4387
URL: www.spaintiles.info
Email: miami@mcx.es

Schools, airports, healthcare. For a space that never rests, ceramic tile is poised to be on the job 24/7/365. Characteristics like durability, easy maintenance, hygienic properties and low lifecycle cost create the perfect package of benefits for these demanding venues. For more information, contact Tile of Spain: 305-446-4387 or www.spaintiles.info.

Coverings Booth #1903



Company Name: Grout Boost
Address: 1105 S. Frontenac St., Aurora, IL 60504
Phone: (866) 614-7688
URL: www.groutboost.com

Grout Boost®, the revolutionary stain resistant grout additive, introduces the latest advancement - Grout Boost Advanced Pro. With mold and mildew product protection, it mixes with grout in place of water to protect against stains, eliminating the need to seal and it is backed by a 20-year stain protection limited warranty.

Circle 155 on Information Card.



Company Name: MAPEI Corporation
Address: 1144 E. Newport Center Drive, Deerfield Beach, FL 33442
Phone: (954) 246-8799
URL: www.mapei.com
Email: dchoate@mapei.com

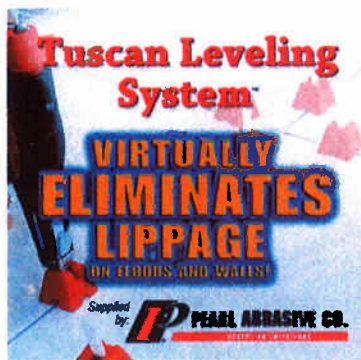
MAPEI's newest specialty grout is packed with features. DropEffect Technology in Ultracolor Plus reduces surface absorption to help repel water, dirt and grime from penetrating grout joints. Rapid-setting technology offers extended working time and ease of use. Efflorescence-free grout provides maximum color consistency. Can be used for joint widths from 1/16" to 1". LEED-compatible Ultracolor Plus contains BioBlock™ technology for mold and mildew protection. Rated CG2WAF per ISO 13007; exceeds ANSI A118.7 and A118.6 standards. Available in 36 colors. **Circle 156 on Information Card.**



Company Name: MerKrete
Address: 4125 E La Palma Ave. #250, Anaheim, CA 92807
Phone: (714) 778-2266
URL: www.merkrete.com
Email: mark.cooke@parex.usa.com

MerKrete Integra Color Grout is a non-abrasive all-in-one adhesive and grout for glass tile. Integra Color Grout was developed especially for the installation of mosaic and glass tile of all shapes and sizes with no concerns about thin set color bleed through because the adhesive and the grout is the same color.

Circle 157 on Information Card.



PEARL®

Company Name: Pearl Abrasive Co.
Address: 6210 S. Garfield Ave., Commerce, CA 90040
Phone: (800) 969-5561
URL: www.pearlabrasive.com

Tuscan Leveling System
 The Tuscan Leveling System is an innovative product that will assist anyone during the installation of ceramic, porcelain, marble, granite and other stone tiles. It is a two-piece, cap & strap, installation system that is designed to eliminate lippage and save the installer time and money. **Circle 158 on Information Card.**



Company Name: Schluter Systems
Address: 194 Pleasant Ridge Road, Plattsburgh, NY 12901
Phone: (888) 472-4588
URL: www.schluter.com
Email: info@schluter.com

The Schluter®-KERDI-BOARD system serves as a substrate, building panel, and bonded waterproofing solution. It can be used to create an absolutely flat substrate with precise corners that is immediately ready for tile. Available in seven thicknesses, it can also be used as a building element to construct free-standing structures for tile coverings.

Circle 159 on Information Card.



TEC™

Company Name: TEC Specialty Brands, Inc.
Address: 1105 S. Frontenac St., Aurora, IL 60504
Phone: (800) 832-9002
URL: www.tecspecialty.com

TEC® 3N1™ mortar is ideal for heavy, large format floor or wall tile installations featuring a formula with no-slip, no-slump performance that is easy to trowel. TEC 3N1 latex modified mortar, made using recycled materials, provides 50 lbs. of coverage in a 30-lb. pound bag and a 25-year limited warranty.

Circle 160 on Information Card.



PURE MAGIC



MARBLE · GRANITE · SLATE · CERAMIC · LIMESTONE · GLASS · PORCELAIN



WHERE INSPIRED DESIGN COMES TO LIFE.
There's a phenomenon that occurs when DalTile is used in a design. All of a sudden, the space has a distinct energy. Elements and objects throughout the room become more than just décor. They take on a life of their own. And while some call it ambience, we know better. Simply put, it's pure magic.

www.daltileproducts.com

Maxxon + Mer-Krete = 15 YEAR WARRANTY*

for CRACK ISOLATION Over Poured Gypsum

MAXXON
MEMBRANE

NEW TCA Standards -
(F-180-05 and F-200-05)
specifies installing a
Crack Isolation
Membrane over poured
gypsum when tile
or stone overlays
are used.



Maxxon and Mer-Krete
have teamed up to offer you a
15 Year Warranty for
Crack Isolation when using
Maxxon's underlayments
and Mer-Krete's
Fracture-Guard 500P
Anti-Fracture Membrane.
Call either Maxxon or
Mer-Krete or visit our
websites for details.

MAXXON

Maxxon Authorized Applicators

MER-KRETE

Serving Ontario
since 1970.

Pour it out
Acoustical Floors

800-201-7948 • 905-827-6358 • www.pouritout.com

*When Fracture-Guard 500P is applied over Maxxon underlayments and in accordance to Maxxon's and Mer-Krete's installation instructions, it is warranted for a period of 15 years from date of installation to inhibit the occurrence of vertical cracking from the substrate to the finished tile or stone surface within. Please visit either Maxxon or Mer-Krete's websites for complete warranty details, qualifications or questions.

ALL-INCLUSIVE.

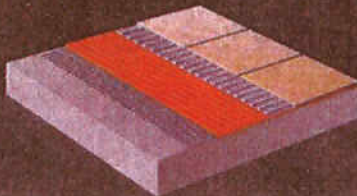
Schluter®-DITRA, specifically designed as an underlayment for ceramic and stone tile, provides the four essential functions that ensure a lasting tile installation.

Uncoupling: Eliminates the major cause of cracking and delaminating of the tiled surface.

Waterproofing: Protects moisture-sensitive substrates.

Vapor Management: Provides a route for excess moisture and vapor to escape from the substrate, allowing it to breathe.

Support: Virtually incompressible within the tile assembly, allowing the installation to support and distribute heavy loads.



- Ideal for use over various substrates, including wood, concrete, gypsum-based screeds, heated floors, and more.
- For use in both interior and exterior applications.

**Schluter®
Systems**
PROFILE OF INNOVATION

www.schluter.com



The Schluter®-DITRA Installation Handbook is a comprehensive and essential guide for successful ceramic and stone tile installations using Schluter®-DITRA. It contains complete details for installations over various substrates, with illustrations that display each component of the tile assembly. The Handbook also includes a wealth of supplementary information to promote an understanding on topics such as waterproofing, movement joints, and thin-set mortars. For additional information, or to obtain or download a copy of the DITRA Installation Handbook, please visit our website at schluter.com, or call 1-800-667-8746.

AWARDS, OCT 2006

several innovation credits. The design integrates dozens of different sustainable technologies, including high-albedo roofing, UV- and infrared-filtering windows, solar-powered plumbing fixtures, high-performance insulation, occupancy-motivated controls for lighting and air circulation, and a slew of other components—all of which work in concert to keep the building's environmental impact and energy costs low.

A look at the Schluter project's lighting system reveals an important aspect of Concept-R's approach. Not only does Gagnon use high-efficiency lighting, but he also relies on some less-obvious techniques for making the lighting more sustainable. Skylights in the warehouse admit natural light, brighter paint colours reflect sunlight through the office spaces, and carefully planned light placements all help to reduce the number of lights needed.

But the HVAC systems in the Schluter building are what really stand out: 100 percent of the load is met by a

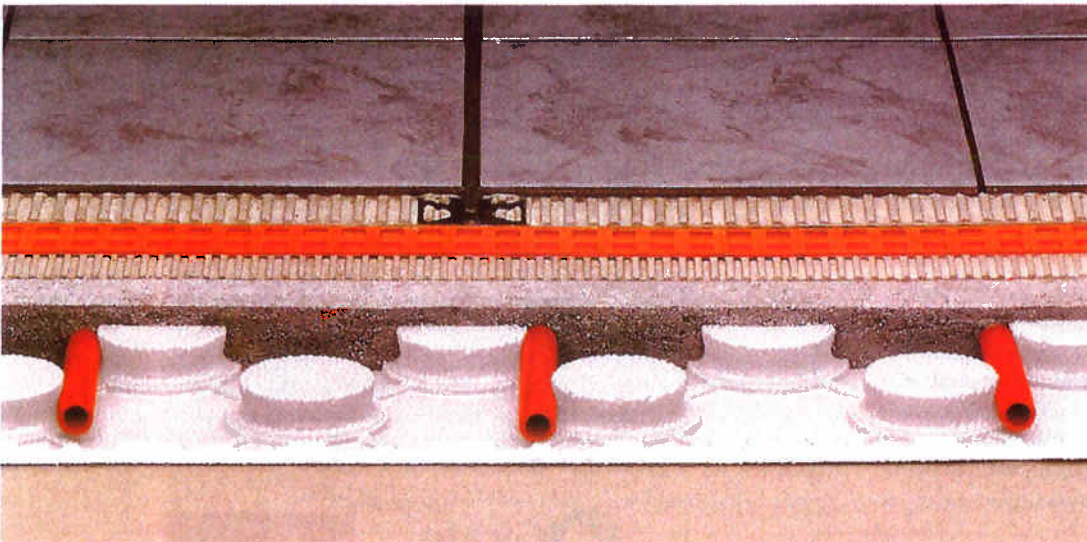
hybrid geothermal system that uses a combination of ground-coupled water-to-air heat pumps, a solar wall, and an earth-air heat exchanger (also known as a "Canadian Tunnel"). These last two systems are passive. Air is passed through either the tunnel, which runs beneath the building, or the solar-heated wall to either precool or preheat the air, as needed. This system won the project one of its innovation credits, and another was awarded for the building's living wall, a 400-square-foot vertical garden that produces oxygen, filters the air, and reduces the burden on the dedicated outdoor air system.

Whether for cheese factories, government buildings, or state-of-the-art corporate headquarters, Concept-R's sustainable designs ensure that the company stands out from the crowd. Gagnon and Fry wouldn't have it any other way. "Sometimes we think, 'You can't be mentally stable when you do what we do,'" Fry says. "You really have to push the envelope." **CEO**

Integrated Radiant Heat Flooring Assembly

Schluter®-BEKOTEC

Lightweight, energy-efficient, modular screed system for radiant heated floors



Schluter
Systems

PROFILE OF INNOVATION

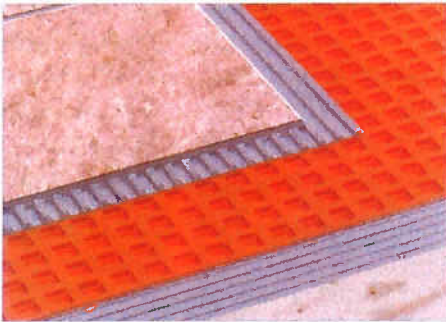
- Can be easily installed over common heat and/or sound insulation
- Utilizes reduced screed mass, promoting fast response and recovery time at lower water temperatures
- Confines curing stresses to smaller modules to control continuous cracks and curling
- Allows installation of continuous screed surfaces without control joints or wire reinforcement
- Accommodates hydronic radiant heating tubes without fasteners
- Suitable for any surface covering

Use the Schluter®-DITRA uncoupling membrane when installing tile or stone over the BEKOTEC modular screed system



PRODUCTS

Thicker membrane system



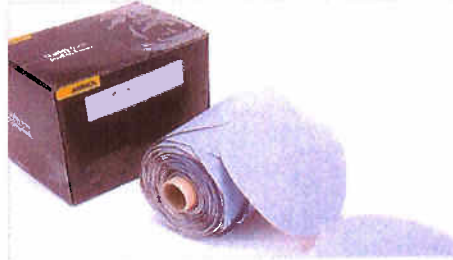
The Schluter DITRA-XL membrane system continues to perform uncoupling, waterproofing, vapour management and support/load distribution. Where it differentiates from the existing DITRA version is in its greater 5/16-inch thickness, which is designed for even transitions between typical ceramic tiles and 3/4-inch thick hardwood flooring, and for ceramic tile installations over single layer wood floors with 24-inch o.c. joist spacing. XL provides installers with

another Schluter membrane option for unique project needs.

www.schluter.com

Hi-yo silver discs

The Q-Silver is a new high performance paper product from Mirka Abrasives. According to the company, Q-Silver provides a fast cut without sacrificing the



quality of the finish or the durability of the abrasives used. The blue-fired grain of these discs are designed to work on harder surfaces, while Mirka's zinc stearate coating helps to ensure the product's durability. The Q-Silver discs are offered in grip backing

and reusable PSA backing, come in five and six inch versions and grits 80 to 1500.

www.mirka.com

Fossilized and petrified look



Mountain Timber glazed porcelain tiles from Mediterranea are produced using Dynamic HD Imaging software and design transfer technology to give it the look of fossilized wood that's been petrified. Mountain Timber comes in three colour shades and two sizes: six-inch by 24-inch and 12-inch by 24-inch, each with two-inch by two-inch mesh-backed mosaics. According to Mediterranea, the look and feel of this tile is a recreation of a rare stone and offers a unique option for architects, designers and homeowners.

www.mediterranea-usa.com



W · STUDIO
Decorative Carpets

A & D NATION-WIDE SALES REPS

We are hiring experienced A & D Sales Reps, specializing in floor coverings and textiles, to join our team in Toronto and nation-wide.

W Studio carries an exclusive collection of fashion forward contemporary and exquisite classical carpets, with a focus in providing custom carpets to the design industry.

An ideal sales rep will have a proven sales record in doing business with high-end residential, corporate interior design & architectural firms.

Please visit our website, wstudio.ca for more info about our company and our commitment to delivering excellence.

Submit CV to: deanna@wstudio.ca
416-929-9290

ADVERTISERS

Beaulieu www.beaulieucanada.ca	32	Namac Industries Inc. www.namac.com	22
Cantrex www.searsfloor.ca	28	Personna www.personna.com	16, 17
Floors @ Work www.floorsatwork.com	26	Proma Adhesives Inc. www.proma.ca	9, 31
Greenbuild www.greenbuildexpo.org	11	RFMS www.measurebyrfms.com	29
Home Depot www.homedepotjobs.ca	19	Satin Finish www.satinfinish.com	21
IIDEX/NeoCon www.iidexneocon.com	15	Stanley Hardware. Floor Protection www.stanleyhardware.com	25
InterfaceFLOR www.interfaceflor.ca	5	TEC www.tecspecialty.com	2
Kashmoo www.flooringsoft.com	27	W Studio Decorative Carpets www.wstudio.ca	30
Mapei www.mapei.com	13		



This beautiful custom job in natural Linoleum was cut by Waterjets Unlimited of Long Island, NY and installed by Alex Shimanisky, Carlos Camacho and David Garcia of Floorcraft. Eric Bower of Forbo, who sent us the photograph, described them as "a great example of mechanics in the industry that really stick to fundamentals and end up with great results."

boards on top like plywood or Masonite if there is to be rolling traffic on the floor.

Finally, when the job is done and the building is occupied, make arrangements to get back to the job and take some pictures. Nothing looks better in an installer or dealer's portfolio that photographs of a beautiful custom installed resilient floor. **FCI**

ELIMINATE CALL BACKS

SEAL GROUT & TILE WHEN YOU INSTALL THE GROUT

- WITH -

SureSeal™
GROUT & TILE SEALER

- Seals damp grout within minutes of grout installation (*no call backs*)
- Requires only One Coat to provide long lasting protection for pennies a foot
- Fast Drying Formula preserves and protects without changing the original color or finish.
- Invisible Overspray will not affect adjacent surfaces
- Superior protection for all stone, ceramic, and masonry surfaces.

NOW YOU CAN INCREASE YOUR SALES AND PROFITS ON EVERY JOB!

For more information, call today.

SureSeal USA - 1-800-636-6677

Visit www.suresealusa.com

E-mail sales@suresealproducts.com

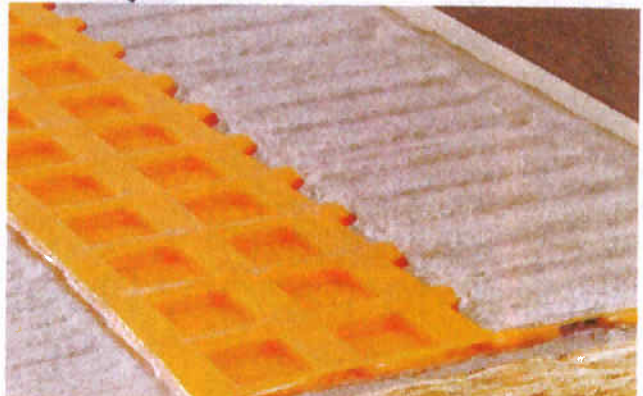


Winner of the 2003 Australian Tile Council's *Best New Industry Product*

CIRCLE 51

Schluter®-DITRA

The Universal Underlayment for Ceramic and Stone Tile



ADDRESSING UNIQUE CHALLENGES FOR WOOD SUBSTRATES



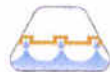
UNCOUPLING

Protects tile covering from movement stresses from wood substrates due to moisture expansion/contraction and loading.



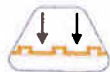
WATERPROOFING

Protects moisture-sensitive wood substrates.



VAPOR MANAGEMENT

Open channels allow residual moisture in wood to escape, helping to prevent warping.

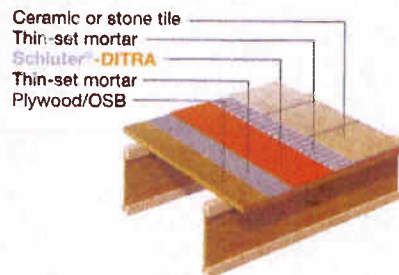


SUPPORT/LOAD DISTRIBUTION

DITRA is virtually incompressible within the tile assembly and provides adequate support for tile covering.

WOOD SUBSTRATE DETAILS

- 16", 19.2", and 24" o.c. joist spacing
- Structural plank subfloor
- Existing vinyl



Please refer to the Schluter®-DITRA Installation Handbook for complete installation guidelines and our no-nonsense 5-year warranty. Easy to follow step-by-step installation video also available!

To receive a copy of the Handbook or video, please call our Customer Service Representatives at 1-800-472-4588, or visit www.schluter.com.

Schluter Systems

PROFILE OF INNOVATION

CIRCLE 53

Save with
**Factory
Finishing!**

Solid Color Shingles
15 Year Finish Warranty



Semi-Transparent Shingles
5 Year Finish Warranty



Pre-finished
Shingle Panels

Dura-Groove
Pre-finished Interior T&G

Call 1-800-641-9663
or visit
www.CedarShinglesDirect.com

READER SERVICE NO. 40

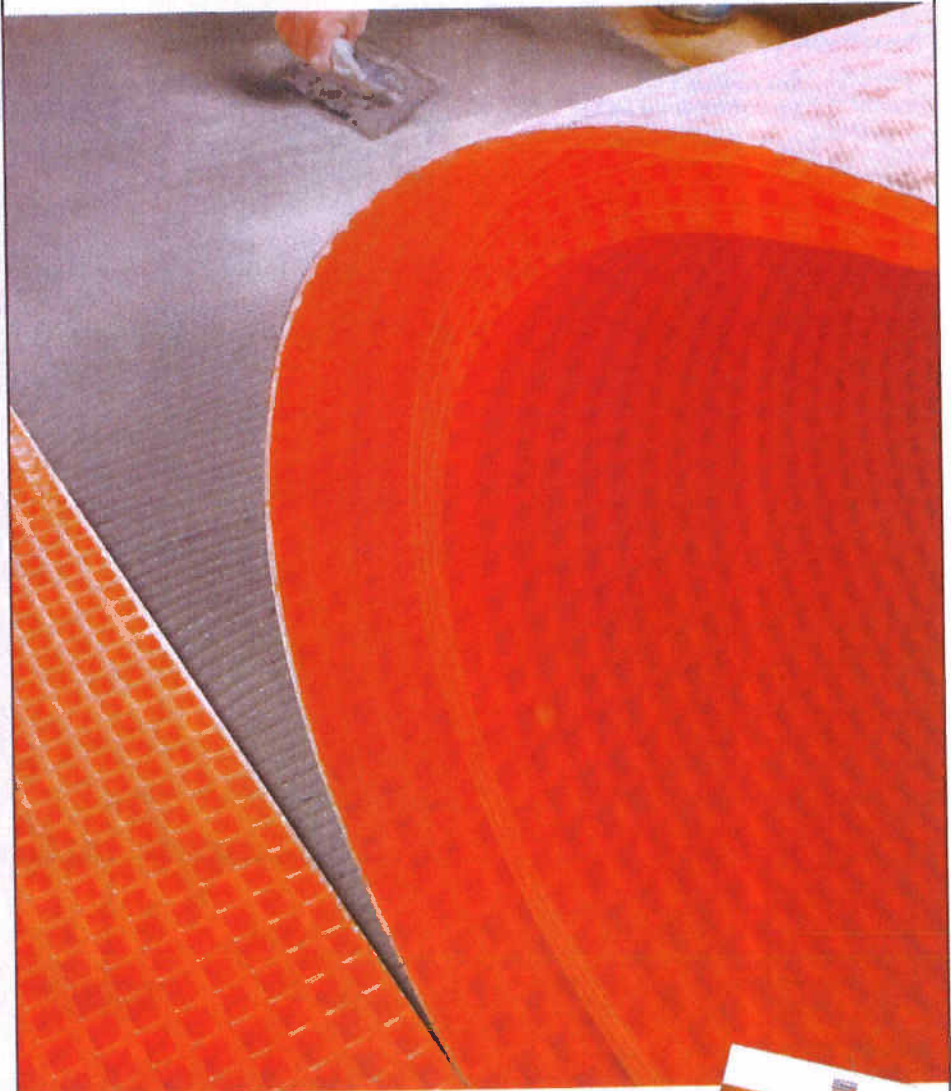


PROFILE OF INNOVATION

Schluter®-DITRA

The universal underlayment for ceramic and stone tile floors, DITRA provides the four essential functions that ensure a lasting installation:

- **Uncoupling**
- **Waterproofing**
- **Vapor Management**
- **Load Support**



The Schluter®-DITRA Installation Handbook contains complete details and illustrations for tile installations over various substrates. To obtain a free copy of the DITRA Installation Handbook, visit:

www.schluter.com
or call **1-800-472-4588**



READER SERVICE NO. 2

EDITOR'S NOTE:

For a long time, TileLetter and NTCA has published articles and sponsored seminars related to the issue of mold in the tile industry. The following article was submitted to TileLetter as an alternative opinion to much of the information previously printed.

MOLD THE REAL STORY

by Gerald "Jerry" Zakim



Mold has become a high priority topic in construction, health/safety and real estate. The concerns raised have resulted in articles, press releases, seminars and publications by governmental and private organizations. Many of the programs have been circulated by responsible and knowledgeable agencies, organizations and involved persons who have properly and factually addressed the subject. **This is good.**

Regrettably, there has also been a great deal of misinformation circulated through these same channels reaching the same audience. **This is bad.**

Unfortunately, the misinformation has caused the following:

- Insurance Carriers to eliminate, limit mold coverage and/or to charge high premiums for such exposure;
- Panic and fears wrongfully placing mold in the same health hazard category as asbestos. In some circles mold is called the "asbestos of the 2000s."

• Disappointment among those users and the public who have been influenced by writings, by producers of products who by their advertisements and claims in their sales information create the belief that their products that contain "mold inhibitors and mold resistance" may be a saving grace in protecting against mold.

Mold does not belong in this category. It affects those who are allergic, have asthma and other respiratory diseases that may cause a predisposition to it. Those who do not have such allergens are not affected by mold.

There are significant differences between mold and asbestos. Asbestos was brought into buildings, mold is a natural organism. It appears only under the conditions described below. Health problems from asbestos caused by exposure to heavy doses, allergies, increased by the effects of smoke can take 30 to 50 years to be detected. The health effects from mold are detected

NobleSeal®

An alternative to
Backerboard or a second
layer of Plywood
on wood subfloors

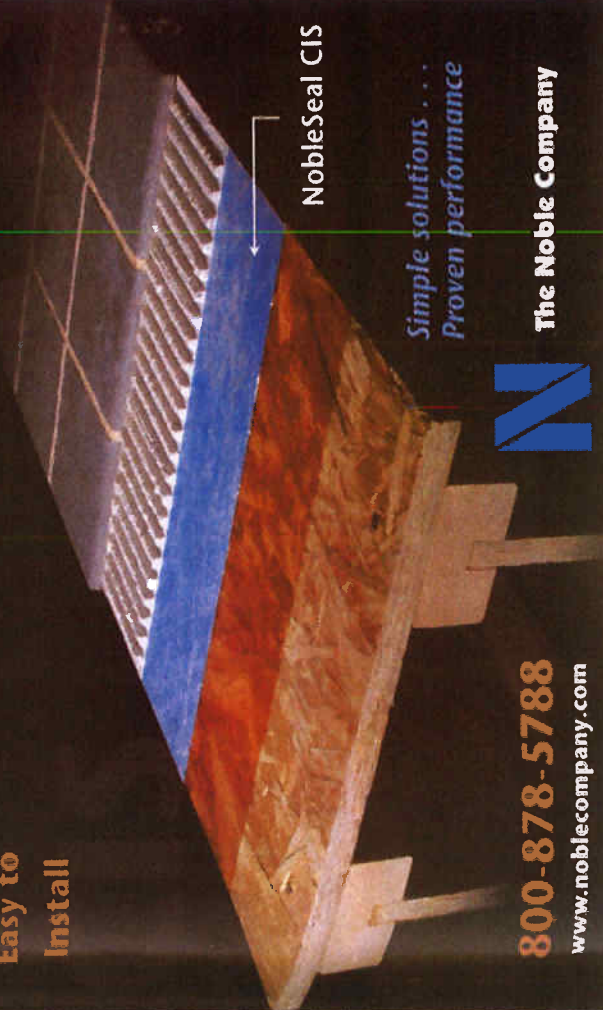
CIS

A sheet membrane that protects tile/stone from cracking

- Lighter/Thinner (only 1/32")
- Saves time. Tile can be installed as soon as CIS is bonded
- Rated for "Light Commercial" use on wood subfloors
- Use over all common substrates including many wood subfloors (plywood and OSB), gypsum concrete and radiant heating systems
- Can also provide waterproofing
- Available in rolls up to 6 ft. wide



Easy to
Install



NobleSeal CIS

Simple solutions...
Proven performance

800-878-5788
www.noblecompany.com



The Noble Company

Every builder's
dream resource
in one
invaluable
little package



Product #021036

Get 208 Issues in
one handy place
and save hundreds
of dollars!

**HUGE
savings**

Our new Archive Collection DVD-ROM gives you quick computer access to nearly every article, section, department and ad, reproduced in its entirety.

Expertise you can't duplicate

- All 208 issues
- Thousands of construction techniques
- Pages viewed exactly as printed
- Crisp, clear on-screen images

Easy to browse & User friendly

- Click through page by page
- View thumbnails to spot covers
- Print individual pages or spreads
- Compatible with your PC or MAC

Order today. Only \$149.95

Call 800-888-8286 mention offer:
MH80043 or visit
FineHomeBuilding.com/archive



Plus shipping and handling. Payable in U.S. funds.



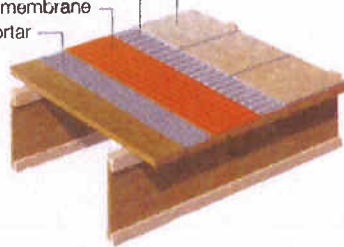
PROFILE OF INNOVATION

Schluter®-DITRA

The Universal Underlayment Specifically Designed
for Ceramic and Stone Tile



Ceramic or stone tile
Thin-set mortar
Schluter®-DITRA
uncoupling membrane
Thin-set mortar



- Schluter®-DITRA provides uncoupling, which eliminates the major cause of cracking and delaminating of the tiled surface
- Waterproofing protects material beneath the tiles
- 95% lighter than cement backerboard or plywood
- Ideal for use over various substrates, such as plywood, OSB, concrete, gypsum, and existing vinyl flooring; used in both interior and exterior applications
- Only 1/8" thick
- Quick and easy to install: no special tools or fasteners necessary; tiles can be applied immediately after DITRA

A comprehensive Installation Handbook, which includes 16 separate installation details, movement joint guidelines, our no-nonsense 5-year warranty, and more. The Handbook is available at www.schluter.com or by calling Customer Service at 1-800-472-4588.



1-800-472-4588
www.schluter.com



READER SERVICE NO. 4

MARKETPLACE

Schluter®-DITRA

Tiling a floor in your home? Protect your investment. DITRA prevents cracking of the tiles and grout and protects your subfloor from moisture penetration to ensure a long lasting tile installation.

www.schluter.com
1.800.667.8746



CARRIER'S INFINITY® AIR PURIFIER

The air inside your home could be up to five times more polluted than outside air, but don't hold your breath! The Infinity® Air Purifier by Carrier doesn't just filter air; it captures and kills up to 99% of airborne germs, viruses and bacteria.

carrier.ca
1.877.433.1294



turn to the experts™

FLIR

FLIR is the world leader in infrared camera and building inspection test equipment technology. FLIR's infrared equipment and certified training courses enable disaster restoration contractors and home inspectors to locate energy deficiencies, such as insulation, moisture problems, building defects and generate accurate reports. Visit www.flirscan.ca to see local professionals in your territory.



RINNAI CONDENSING TANKLESS WATER HEATERS

Ideal for residential applications. Delivering up to 97% thermal efficiency, Rinnai's tankless condensing units are capable of supplying continuous hot water simultaneously to multiple plumbing demands throughout the home, and offer significant energy and space savings over tank-style water heaters. www.redmondwilliams.com
1.888.571.2627



PINCHIN ENVIRONMENTAL LTD.

Asbestos and Mould Testing

Your home may contain materials that can be hazardous to your family's health.

Pinchin provides a range of tests and advice for asbestos, mould, bacteria and radon gas.

Visit www.pinchin.com/home-owners for help in testing.

1.855.PINCHIN (746-2446)



BOSCH TILE LASER

The Most Innovative Wall and Floor Covering Layout Tool

- At a press of a button select 0° and 90° lines plus optional 45° layout line
- Clear, sharp and very precise for all tile and floor/wall covering surfaces
- Raised from surface to project over uneven surfaces
- Strong magnets on bottom provide secure and adjustable attachment on positioning plate and other ferrous-metal surfaces



BOSCH
www.boschtool.com

NEW INSTRUCTORS:

TCNA'S SAMULSKI, NTCA'S SLOAN

Historically, TCNA donated a cash contribution to help the non-profit meet its budget and grow. Now, TCNA is stepping up support by supplying an instructor to facilitate the addition of courses, course locations, and the standardization of curriculum. An International Masonry Institute (IMI) trained tile-setter, Stephanie Samulski has spent the past year at TCNA familiarizing herself with the world of production performance and testing, installation standards, and inspections. Combined with six years of mostly commercial installation experience with Shores Tile Company in Detroit, a journalism degree, and publishing experience, Samulski's unique blend of skills puts her in pole position to focus on course and curriculum development as the organizations marry their instructional offerings.

"I can't imagine a job being more tailored to my abilities and my experience," said Samulski. "Even the standards and reference-based writing that some people might think of as dry, is kind of my thing. Of course I also love the creativity that's there in our industry" says Samulski.

Likewise, NTCA offers up its new training director, Gerald Sloan, to teach CTEF courses. A 25-year veteran of the industry with experience as an installer, foreman, superintendent, safety director, and craft trainer, Sloan said of teaching: "It's just a lot of fun to train." Sloan's installation students, employees of Isaminger's D.M.I. Tile and Marble,

New NTCA training director Gerald Sloan will teach CTEF courses under the new arrangement.

were part of the only Department of Labor-recognized tile setter and helper apprenticeship outside of union-based training. Sloan refers to his three years as a craft trainer as the "highlight" of his 20 years with Isaminger and D.M.I. He enjoyed watching as his students' work improved, he says, and "they had more enthusiasm by being a part of craft training and they were excited to learn more. I am eager to help promote the trade and proper installation methods."

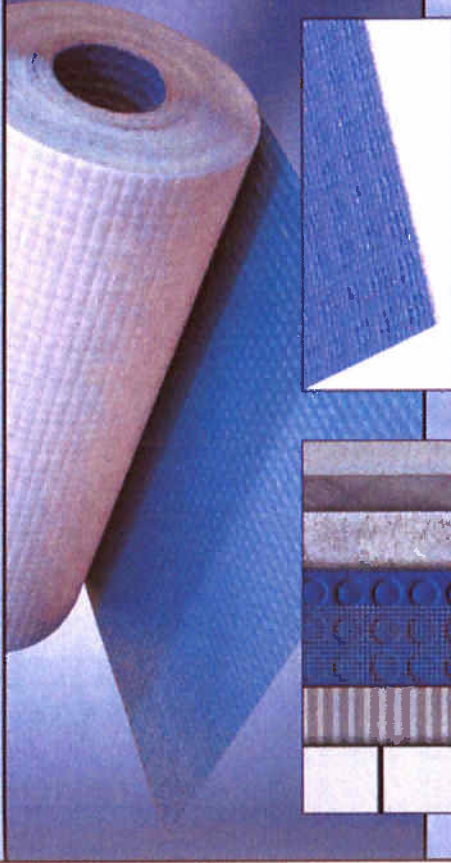
Reunited in a new relationship, Sloan and Isaminger continue a commitment to installer training aimed at translating industry standards into hands-on know-how. "Fundamentally, standards are created to protect the consumer by defining criteria for acceptable products and installations," said Eric Astrachan, TCNA executive director. "As more installers learn the right methods, techniques, and trade practices, everyone benefits, certainly the consumer but also the industry as a whole." And, according to Hovmand, "the number of trained tile setters in the US is not satisfying the increasing need as the tile market develops. It is therefore crucial that more opportunities for training are provided by the tile industry."

Function. Design. Quality. Blanke.



Blanke • UNI-Mat PRO

Blanke-UNI-Mat PRO - New and Improved!



- ▶ Light weight, labor saving alternative to backer board
- ▶ Top mesh provides more stable working surface
- ▶ More tolerant of unwelcome traffic prior to tile installation
- ▶ Mesh provides more tenacious bond with tile
- ▶ Only 1/8" thick
- ▶ Crack isolation (uncoupling)
- ▶ Equalize substrate vapor pressure

Blanke Corporation
3631 Clearview Parkway
Atlanta, GA 30340
Phone 800-787-5055
770-936-9211
Fax 770-936-9511
Internet www.blankecorp.com

on the cover



MAPEI CORPORATION

In keeping pace with fashion's changing style, MAPEI has broadened its grout spectrum to a 36-color palette that includes 14 fresh, new colors.

MAPEI's new hues include pastels, mid-tones, blue-green shades and neutrals including Cayenne, Lilac, Magnolia, Navajo Brown, Pear, Green Tea and Slate.

continued on page 18

TILELETTER EDITORIAL POLICY

TileLetter is the official publication of the National Tile Contractors Association, Inc. (NTCA). *TileLetter* provides a medium for expressing views and opinions without approving, disapproving, or guaranteeing the validity or accuracy of any data, claim or opinion appearing under a byline, or obtained or quoted from an acknowledged source. Statements of fact and opinion are made on the responsibility of the authors alone, and do not imply an opinion or reflect the official position of NTCA.

The National Tile Contractors Association, Inc. is an equal opportunity association and seeks to include qualified individuals and businesses in all phases of its activities. The National Tile Contractors Association, Inc. does not discriminate on the basis of race, color, religion, age, sex, sexual orientation, national origin, veteran status, or disability. The National Tile Contractors Association, Inc. seeks opportunities to include these groups in its programs and activities.

NTCA TileLetter

BART A. BETTIGA,
Publisher
LEILEY A. GODDIN,
Editor
MICHELLE HARRELL,
Assistant Editor
Production Manager/Designer
Advertising Sales

NTCA Executive Officers:

DON SCOTT, *Chairman of the Board*
FRANK CASTRO, *President*
JOHN COX, *First Vice President*
JOE A. TARVER,
Executive Director Emerita
BART A. BETTIGA,
Executive Director

Board Advisor:

JIM ISAMBERGER
SCOTT CAROTHERS

Affiliate Directors:

JOHN TURNER, SR.,
Distributor Representative
CARL HARRIS,
Manufacturing Representative
TOM CONNELLY,
Allied Manufacturing Representative

NTCA Staff:

JOE A. TARVER,
Executive Director Emerita
BART A. BETTIGA, *Executive Director*
BOB BROWN, *Membership Director*
LEILEY A. GODDIN, *TileLetter*
MICHELLE HARRELL, *TileLetter*
GIGI WALL,
Director of Administration & Accounting
GLENN STONN,
Training Director

Mailing Address:

P.O. Box 13629
Jackson, MS 39232

Shipping Address:

626 Lakeland East Drive
Jackson, MS 39232
Tel: 601-939-2071
Fax: 601-932-6117

Website:

www.tile-nsn.com
www.tileletter.com

E-mail Addresses:

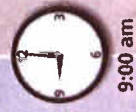
bart@tile-nsn.com
leiley@tile-nsn.com
editor@tile-nsn.com
michelle@tile-nsn.com
tileletter@tile-nsn.com
bob@tile-nsn.com
gerald@tile-nsn.com
gig@tile-nsn.com
joe@tile-nsn.com

PREP YOUR FLOORS UP TO 4 TIMES FASTER AND 25 TIMES LIGHTER

300 sq. ft. of
Traditional Backerboard

VS.

300 sq. ft. of
EasyMat



9:00 am

Two installers unload
over 800 lbs. of material

Two installers unload
under 30 lbs. of material



10:00 am

Begin setting tile



11:00 am



12:00 pm



12:30 pm

Begin setting tile



Faster. Easier. Smarter.

EASYMAT

— SoundGard Technology

800-272-8786 • www.custombuildingproducts.com

hard troweled concrete slab was covered with paint overspray. This project, in a coastal area, is very typical of the calls and emails we receive. The company, a well known and respected entity says they never use movement joints on residential projects and this is just part of the normal installation issues experienced in this area. Now that is truly burying your head in the sand. These good people who chose tile for their homes deserve properly trained installers and sales personnel. Instead, they now face substantial expense in either repairing the floor or on attorneys' fees for a latent defect in installation. I am not

When someone says they have a tile failure due to excessive moisture what they should really be saying is due to defective workmanship. Either they used the wrong thinset, did not allow it fully cure prior to moisture exposure, or, the expansion joints are few to none and likely there are a few other ills.

sure what the final outcome will be, but the installation contractor, having four wheels, for some reason cannot currently be located. I suspect he has opened shop elsewhere and will continue to advertise problem-free installations.

Lest we further digress, what are some other good reasons for movement/expansion joints? Wood structures; if it is made of wood, it is going to move. All wood-supported floor systems have a certain amount of deflection. Too much movement can cause a host of problems but even normal movement from bending stresses must be accommodated. Perimeter joints are critical in wood structures to

accommodate normal movement of the structure and seasonal moisture changes in the wood itself. If there is a beam running down the center of the room or home, common sense tells us that is a pivot point from which the floor will deform on either side, like a board over a fulcrum. It would be prudent to put a soft joint or movement profile over that area to allow the floor to move without

putting the tile assembly in stress.

Another area of consideration is doorways. Take the example of a kitchen with an adjoining dining room. If we have a 300-square-foot kitchen with a doorway to a 250-square-foot dining room, both installed over backer board, we have roughly 1,800 pounds on one side of the wall and 1,500 pounds on the other side, joined together at a 3-linear-



PROFILE OF INNOVATION

Schluter®-DITRA

The universal underlayment for ceramic and stone tile floors, DITRA provides the four essential functions that ensure a lasting installation:

- **Uncoupling**
- **Waterproofing**
- **Vapor Management**
- **Load Support**



The Schluter®-DITRA Installation Handbook contains complete details and illustrations for tile installations over various substrates.

For additional information, or to obtain or download a free copy of the DITRA Installation Handbook, visit:

www.schluter.com
or call 1-800-472-4588



CIRCLE 5