

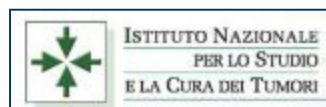


**MHT S.p.A. - Medical High Technologies**, Via  
Milano 12, 37020 Arbizzano di Negrar (VR), -  
ITALY  
P.iva: 02299640231 | Phone: +39 045 6020842 | Fax:  
+39 045 6020196 | E-mail: **info@mht.it**

## MHT Group

The MHT (Medical High Technologies) project was born in 1991 in Verona, Italy, and then extended in 1995 with the creation of MHT (Medical High Technologies) OR (Optic Research) AG () in Swiss (Zurich). It's an advanced research project in the optic's field, carried out by a vanguard team of technicians and engineers, with the goal to develop new technologies to be applied on the electro-medical field.

The big financial commitment leaded to a first and encouraging result in 1998, with the spectrophotometer "**SpectroShade**", a state of the art idea and instrument, immediately patented. After a first positive market experience in the dental sector, that recently achieved an acknowledgement from the Colgate-Palmolive corporation, in 2000 started an ambitious cooperation in dermatological studies with the **Istituto Nazionale per lo Studio e la Cura dei Tumori** (INT (Istituto Nazionale Tumori) ), to obtain an instrument for the early melanoma diagnosis.



<http://www.istitutotumori.mi.it> The goals reached in this cooperation were excellent, and INT (Istituto Nazionale Tumori) presented those results towards the academic and scientific world in the international meeting on 20 June 2003. Year after year this cooperation lead to even better results, as our unique instrument give evidence.

>Soon will be ready another instrument useful to orientate the doctor in the therapeutic treatment of aesthetic vascular diseases.

Nowadays each MHT (Medical High Technologies) instrument is the state of the art in spectrophotometry applied to medical diagnosis. MHT (Medical High Technologies) AG () continuously

develop and studies new instrument and search for new fields of application.

MHT (Medical High Technologies) S.p.A. has a social capital of 7 millions Euro, controlled by Gobbetti family, together with private bank Aletti Merchant (Gruppo Banco Popolare di Verona e Novara) and Mediocredito del Trentino Alto Adige.



webmaster: eWake [<http://www.ewake.it>]



**MHT S.p.A. - Medical High Technologies**, Via  
Milano 12, 37020 Arbizzano di Negrar (VR), -  
ITALY  
P.iva: 02299640231 | Phone: +39 045 6020842 | Fax:  
+39 045 6020196 | E-mail: **info@mht.it**

**MHT (Medical High Technologies)  
SpectroShade™ (Trade Mark)**

The state of the art technology in  
digital shade matching

Do you remember what you learned  
about shade taking?  
This will make you forget it!



[Find how...](#)

**Dealer all over the world!**

MHT (Medical High Technologies) is booming.

And our dealers are all over the world.

Find the nearest MHT (Medical High Technologies) dealer to  
your zone!

[more »](#)

webmaster: eWake [<http://www.ewake.it>]



**MHT S.p.A. - Medical High Technologies**, Via  
Milano 12, 37020 Arbizzano di Negrar (VR), -  
ITALY

P.iva: 02299640231 | Phone: +39 045 6020842 | Fax:

# SpectroShade™ "Micro" Dental

It's now available new SpectroShade™ (Trade Mark) "Micro", spectrophotometer with high precision, for the measure and the objective description of the tooth's color, natural or artificial, in every light conditions:



- [main features](#)
- [how it works](#)
- [technical data](#)
- [photo](#)
- [f.a.q.](#)
- [assistance](#)
- [Manual download](#)

- [Software download](#)

## Main Features:

- Reliable
- Easy to use: in a click it acquires more than 2 millions information for each image
- Quick to use: each acquisition requires less than 1 second
- Complete and exhaustive communication
- It saves the images in a patient database
- Based on an objective reading of the chromatic spectrum of the teeth and crowns
- Immediate correlation with all existing ceramics standards
- Portable (less than 1 kg)

- It can read the tooth shade with absolute precision
- Instrument composed by a spectrophotometer with Linux®-based hardware and software

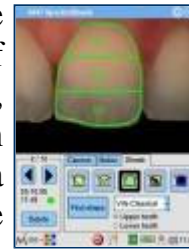
## How it works:



The SpectroShade Micro device is a patented self-contained unit that is composed of a spectrophotometer operating in a Linux® ambient, totally user-friendly and perfectly compatible with Microsoft Windows® and Macintosh® platform. The spectrophotometer is a LED (Light Emitting Diode) application, with special design for each wavelength. When the measure button is pressed, the light source creates, in different instants, the whole spectrum of the visible light. The colors are carried along the special light path, divided in two optic guides that converge symmetrically the light to the area of interest. The image of the interest area, illuminated with the colored light, is then reflected onto a special Black and White CCD (Charged Coupled Device) sensor located at the end of the optic system. This CCD (Charged Coupled Device) sensor reads the data in the visible range from about 400nm to 700nm.

The described system is so sophisticated that measures spectrophotometric data and shows perfect color images using only a Black and White CCD (Charged Coupled Device) . The internal computer analyzes over 2 million reference points at every time an image is acquired, and it is also able to drive all the functionalities of the instrument.

When you acquire a tooth image, you can see on the high-brightness Liquid Crystal Display the area of interest, in order to take the best image. In addition, the Touch-Screen display provides also information about the patient data, and you can also record a voice message, that will be linked to the image acquired. The SpectroShade Micro can transfer the spectrophotometric data to the PC (Personal Computer) , as well as images, in 3 ways:



- via USB (Universal Serial Bus)
- via W-LAN (Wireless-Local Area Network)
- SD (Secure Digital) -Card

» To learn more about it, read the [History of SpectroShade™ \(Trade Mark\)](#).

webmaster: eWake [<http://www.ewake.it>]



MHT S.p.A. - Medical High Technologies, Via  
Milano 12, 37020 Arbizzano di Negrar (VR), -  
ITALY

P.iva: 02299640231 | Phone: +39 045 6020842 | Fax:

+39 045 6010195 | E-mail: [info@mht.it](mailto:info@mht.it)

## Dermatological Division

### Innovative instruments for the early melanoma diagnosis:

The melanoma, a malignant tumour which forms in melanocytes, is a relatively rare neoplasia, but in progressive increase over the last fifty years in the light skinned population all over the world; in fact, this neoplasia represents 4% of all malignant tumours in Northern Europe and the USA (United States of America) .

This continuous increase in case's numbers, and the relative scarcity of pigment lesion experts are the main reasons for the development of an innovative technology such as Spectroshade™ (Trade Mark) Derma.

### ► SpectroShade™ (Trade Mark) "Office" Derma

Spettrophotometer with Windows© interface. It reads the color of all surface of the tooth, saves the images in a patient database, and communicates between office-laboratory:



- [main features](#)
- [how it works](#)
- [technical data](#)
- [photo](#)
- [f.a.q.](#)
- [assistance](#)
- [Manual download](#)

- [Software download](#)

## ▶ **SpectroShade™ (Trade Mark)** **"Mobile" Derma**

This instrument comes from the "Office" system, to offer the clinicians the same performances together with the portability of the diagnostic system. The image acquisition system, the analysis software and diagnostic accuracy do not change.

The hardware has been modified, to have a system that can be moved in a suitcase, quite small and light. This instrument work with a laptop via USB (Universal Serial Bus) or Ethernet:



- [main features](#)
- [how it works](#)
- [technical data](#)
- [photo](#)
- [f.a.q.](#)
- [assistance](#)
- [Manual download](#)
- [Software download](#)

▶ Exclusive dealer:

---

### **ITALY**

#### **DOC MEDICA SRL**

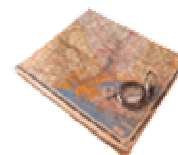
Corso Casale, 239, 10132 Torino

Phone: +39 011 896 77 11

Fax: +39 011 890 00 38

URL: [www.docmedica.it](http://www.docmedica.it)

---





» To learn more about it, read the [History of SpectroShade™ \(Trade Mark\)](#).

webmaster: eWake [<http://www.ewake.it>]