



INSTALLATION GUIDELINES FOR

BLOCKADE™ MORTAR DEFLECTION SYSTEM

REQUIREMENTS: Must be installed with a properly applied masonry flashing and weep systems

NOTE:

- Blockade™ 80 and Blockade™ 150 are designed for use at all flashing locations including brick cavity, composite, single wythe, veneer, etc.
- Mechanical attachment not required when installing Blockade™ 80 and Blockade™ 150

Blockade™ 80 Installation:

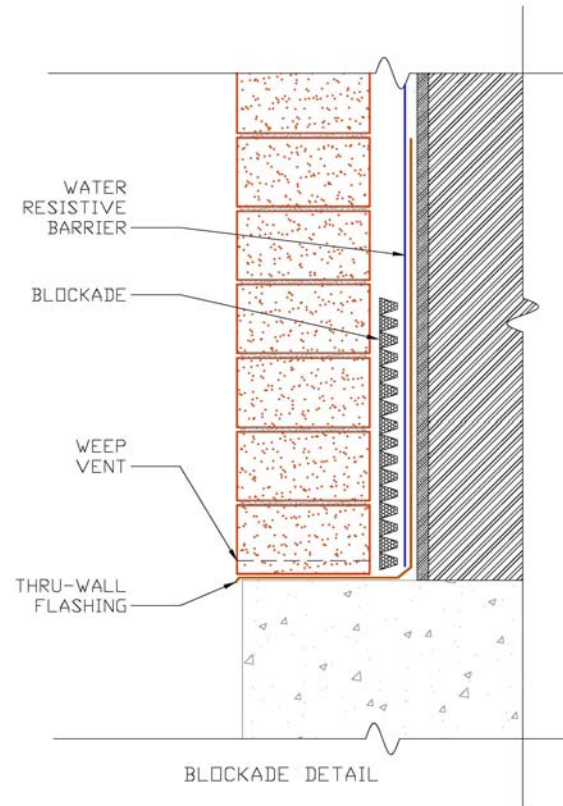
Cavity size: Less Than 1"

Install Blockade™ 80 by inserting product horizontally at all masonry cavity flashing locations. Ensure that product is installed with the bottom edge of product against the sheathing-side of cavity and top of product is in contact with the exterior masonry wall. The resulting diagonal installation of Blockade™ 80 will block out and deflect away any mortar droppings inside the cavity, providing a clear path to the weep system of the exterior masonry wall.

Blockade™ 150 Installation:

Cavity Size: 1" or Greater

Install Blockade™ 150 by inserting product horizontally at all masonry cavity flashing locations. Blockade™ 150 will block out and deflect away any mortar droppings inside the cavity, providing a clear path to the weep system of the exterior masonry wall.



BENJAMIN OBDYKE INCORPORATED

400 BABYLON ROAD, SUITE A · HORSHAM, PA 19044 · TOLL FREE: (877) 647-8368 · FAX: (215) 672-5204

SALES: (800) 523-5261 · FAX: (215) 672-3731

WWW.BENJAMINOBDYKE.COM