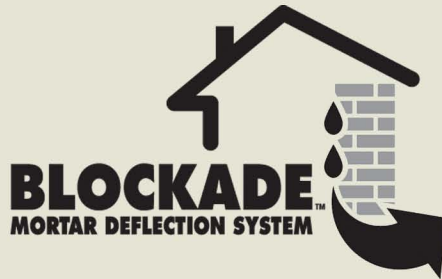


# Mortar Deflection

WALL



From the innovators of Home Slicker®, the market leading residential rainscreen, Benjamin Obdyke introduces the Blockade™ Mortar Deflection System. Designed specifically for use in brick wall cavities, the entangled matrix design of Blockade blocks mortar from clogging the weep holes and allows excess moisture to flow freely out of the wall cavity. The result is a brick wall that is built to stand the test of time and remain free from the deteriorating effects of mold and mildew.

Blockade is available in two thicknesses in order to accommodate the different cavity sizes typically used in brick wall construction. Blockade 80 is for applications with a 1.4 inch or less cavity and Blockade 150 is for applications with a cavity of 1.5 inch or greater.

## BENEFITS

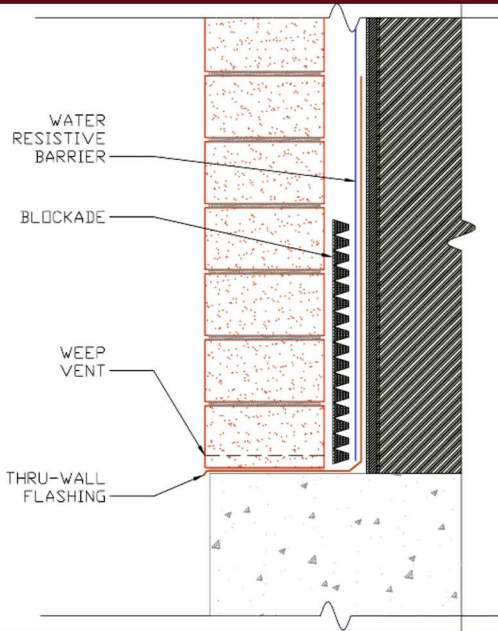
- The lightweight roll form of Blockade allows for quick and easy application.
- Entangled matrix design creates a multi-dimensional layer that prevents mortar droppings from making it to the bottom of the cavity wall leaving the weep vents clear of any obstructions.
- Available in varying sizes ensuring there is a solution for any application.



*The entangled matrix design of the Blockade™ Mortar Deflection System traps mortar droppings and allows excess moisture to flow freely out of the wall cavity.*







Installing Blockade is very simple. Start by unrolling Blockade in parallel with the wall. Once you have the correct length, just cut the roll and slip Blockade in the cavity behind the brick and on top of the flashing.



Blockade 80 is available in 50 ft. rolls and Blockade 150 (above) is available in 35 ft. rolls.

WALL

**SPECIFICATIONS**

**BLOCKADE 80**

**BLOCKADE 150**

Application	Brick wall cavities 1" or less	Brick wall cavities greater than 1"
Width	10"	10"
Thickness	.80"	1.5"
Roll Length	50'	35'

*Benjamin Obdyke is one of America's leading providers of high-quality residential roof and wall building solutions. Our products enhance the building system to maximize the performance, durability, and value of a building's most critical elements - its outer structure. For more information on Blockade or any of our other products please visit our website at [www.benjaminobdyke.com](http://www.benjaminobdyke.com).*