



iScan™

PATHIAM™ for research

PATHIAM™ for IVD use (HER2/neu)

iScan™ for research

3i Technology

Overview

BioImagene's iScan™ is an automated digital slide scanning system, part of BioImagene's Total Digital Pathology solution. The iScan™ offers sophisticated hardware and software on an easy to use platform. It provides high speed scanning of slides with unsurpassed image quality. iScan™ is fully integrated with BioImagene's software solutions to provide a powerful slide management and analysis system. iScan™ transforms BioImagene's vision into reality, by making an affordable digital pathology solution available to every pathologist in every hospital and every laboratory.*

[Benefits](#) | [Features](#) | [Specifications and Software](#)



iScan™ Benefits:

- Walkaway Automation
- High Speed Scanning
- High Slide Capacity
- Unsurpassed Image Quality
- High Value Proposition

[Overview](#) | [Features](#)

iScan™ Features:

Patent Pending Technology

- Automatic slide detector that informs users of the presence of slides in the slot in the rack
- Built-in optical scanning at 20X and 40X
- Crisp, responsive, high - quality images at all magnifications
- Equipped with BioImagene Slide Viewer that supports annotation and remote viewing

Slide Scanning

- High capacity Autoloader for walk away scanning of up to 160 slides
- SakuraT rack can be removed from the Autostainer and loaded into the scanner
- Simple load and unload mechanism
- Automatic Tissue Region identification with the option of a manual override

LCD display

- Informative color display of scanning process
- Clear and concise instructions
- One click simple step-by step process



Integration with PathiamT and TissueMineT Image Analysis and Management Software

- LIMS compatible
- Batch Analysis

High Value

- Versatile design with maximum performance
- Compact footprint

Easy to Use

- Fully automated operation
- Easy installation with minimal supervision
- Comprehensive customer support

iScan™ Specifications and Software

Input format	1in x 3in (25mm x 75 mm) Microscope Slides
Optional large slide	2in x 3in (50mm x 75mm) Microscope Slides
Slide Capacity	1 to 160 slides (1 to 80 large slide format) using 8 integrated standard Sakura™ racks
Microscope Objective	Olympus™ 20x/0.50 Plan Fluor (Nikon™ 20x/0.50 Plan Fluor)
Optional Objectives	Olympus™ 40x/0.75 Plan Fluor (Nikon™ 40x/0.75 Plan Fluor)
Scanning Resolution	0.46um/pixel @ 20x or 0.23um/pixel @ 40x
Barcode capability	1D and 2D option
Light Source	Integrated LED
Auto-Scan	Automated barcode reading, tissue identification, auto focus, scanning and JPEG 2000 compression for up to 160 slides
Manual Scan	User select scan area for single or batched slides with automated or manual naming
LCD	5.5" Diagonal Full Color Display (320 x 240 Resolution)
Slide Analysis	Fully integrated with all Biomagene image analysis/storage/collaboration software
Scan Viewing	24-bit true color
Slide Storage Format	JPEG 2000
Dimensions	18" W x 18" D x 17" H (45mm W x 45mm D x 41mm H)
Weight	~ 50 Lbs (23 Kg)
Power	110-220 VAC, 50/60 Hz, 150 Watts
Compliance	CE, CSA, UL

Computer and Monitor

Workstation	Intel based PC, dual core, dual Xeon processor
Storage	160 SATA / 4 GB, CD/DVD Burner
Optional Storage	512 GB or more
Connectivity	GIGABIT Ethernet ports
Monitor	24" Flat Panel High Resolution Monitor (1920x1200)

Software

Image Viewer

- Comprehensive image annotation capabilities including measurement tools, free-hand mark-up, and textual annotations
- Save and share all annotations with other users, without modifying the original image
- Easy-to-use interface that supports viewing of multiple images both locally and remotely

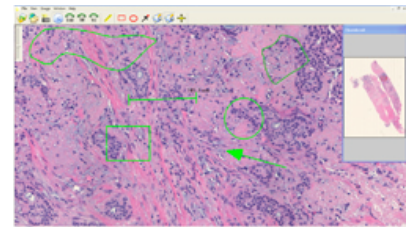
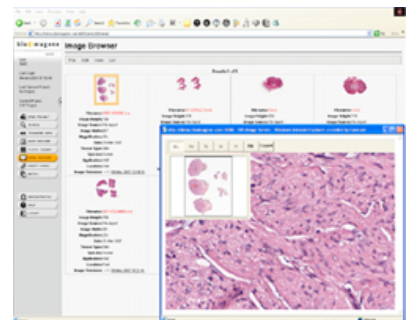


Image Management

- Supports web-based sharing and viewing of whole slide images
- 21 CFR Part 11 compliant
- Comprehensive user-access controls and audit trails to ensure data authenticity



*All products are for research use only.

[Overview](#) | [Benefits](#)

[Management Board](#) [of Directors](#) [Advisory Board](#) [Investors](#)

©2007 BioImagene, All Rights Reserved.

[Technical Support](#) [Digital Pathology](#) [Information](#) [Published Articles](#)