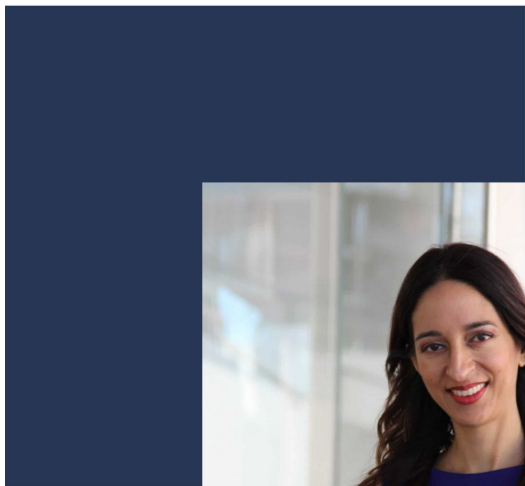




## Empowering leadership and career development

[LEARN MORE](#)



Manisha Dhawan, Founder & CEO

## Welcome to MPath Coaching

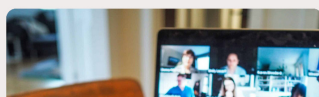
As an ICF-accredited coach, design thinking specialist, and former Big 4 consultant, I have over 2 decades of experience leading global digital innovation and change management across multiple industries. I formed MPath Coaching to help leaders at all levels enhance people-centric skills and create more engaged, inclusive and productive teams.

The future (and now) of work calls us to step into more conscious, compassionate and courageous leadership. Effective communication and emotional intelligence will continue to be important. I work with individuals and teams to develop these critical skills.

Areas of focus include: Executive Coaching, Career Coaching, Leadership Development, Assessments, Speaking Engagements

[DISCOVER MORE](#)

## Coaching Services

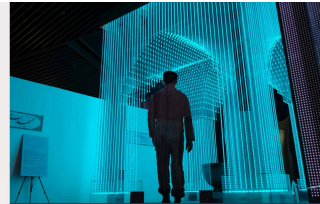




1-on-1 Career Coaching



Group Career Coaching



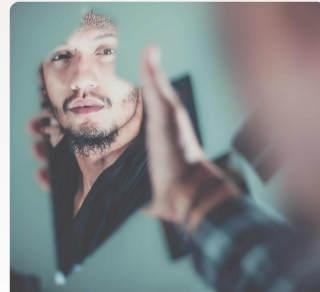
Executive Coaching



Corporate Team Coaching



Workshops & Training



Assessments

20+

Years of Experience

12+

Industries Served

320+

Clients Served

100%

Clients Satisfied

## News & Articles

*When it comes to work*



*what do we value?*

### Return to Work and Values

Many of us are reflecting on how our values align...

[Read More](#)

*The Future of Collaboration*

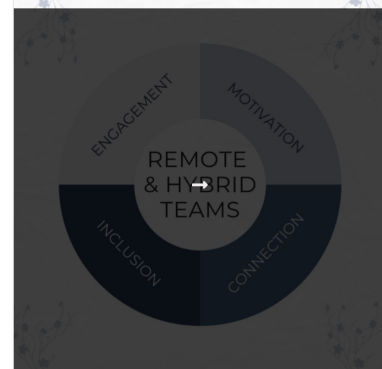
How will collaboration be disrupted?



### The Future of Collaboration

Collaboration, Disrupted Hundreds of startups were born from the pandemic...

[Read More](#)



### Remote Work and Employee Experience

The expansion of remote work has impacted the way leaders...

[Read More](#)

LOAD MORE



## Future Workplace Trends by MPath Coaching



### Digital and Data

The proliferation of data and digital fuels the need for teams to adapt to change and embrace how technology will reshape work. The future of work includes advanced communication methods and more immersive experiences.



### Skills Development

Advanced metacognition skills including decision-making, creative problem-solving and change management are important as technology advances at a rapid pace. Upskilling and reskilling the workforce for the future is vital.



### Generational Changes

With Gen Y and Z expanding their footprint in the workplace, leaders need to understand how to motivate, engage and communicate across different generations and diverse work preferences.



### Employee Experience

Starting with empathy, companies can disrupt and reimagine the employee experience. Diversity, inclusion, equity and belonging (DEIB), accessibility, wellness, and culture are key considerations.



### Leadership (R)evolution

As the demands of leaders change and old leadership paradigms dissolve, leaders who embrace self-reflection, empathy, humility and courage can positively impact retention and engagement.



### Collaboration & Work

Across a dynamic landscape of remote, hybrid and onsite teams, establishing new ways of working and collaborating can drive efficiency and results.

## Prior Experience



## Client Praise

Manisha is an inspirational coach and leader. Not only is she passionate about guiding, supporting and following up with her clients, she takes pride in her work and wants you to be successful. I had the pleasure working with Manisha last year and landed a great job as a result of her strategic and innovative coaching. I highly recommend Manisha if you're looking to make a career change, furthering a career, or just seeking an advisor/mentor.



Geri Kurumada  
Finance Director

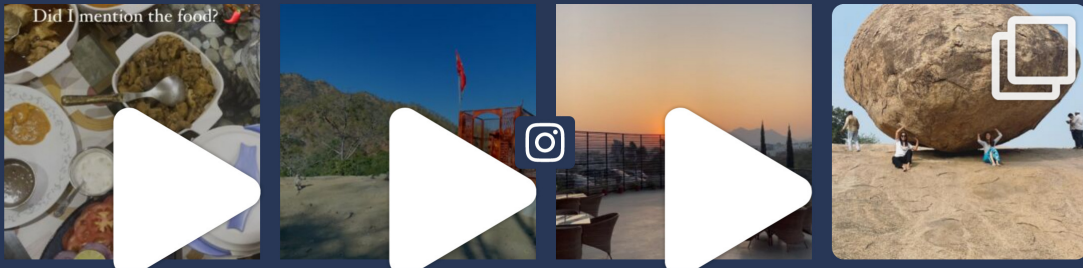


# Get Your Free Leadership Tool

Join the community to receive news, special offers, and your free conscious leadership resource.

<input type="text" value="Name"/>	<input type="text" value="Email Address"/>
<input type="button" value="Send me my free tool"/>	

## Follow on Instagram



Empowering leadership and career development for the (now) future of work



### Social Media



### Location

7040 Avenida Encinas  
Suite 104  
Carlsbad, CA 92011

714-468-5667

### Quick Links

- |                                    |                                |
|------------------------------------|--------------------------------|
| <a href="#">About</a>              | <a href="#">Praise</a>         |
| <a href="#">Personal Coaching</a>  | <a href="#">Free Resources</a> |
| <a href="#">Corporate Coaching</a> | <a href="#">Articles</a>       |
| <a href="#">Workshops</a>          | <a href="#">Contact</a>        |
| <a href="#">Assessments</a>        | <a href="#">Privacy Policy</a> |