



Engineered Solutions
Oklahoma Strategic Partners
OSHA Incident Free
NitroBond *Reliable Experienced Team*
Foam Cement *Mid-Continent Laboratory*
Spinnaker Cementing
API Additives Bulk Blending Innovative **Zero LTI** *El Reno*
Backed by NGP
State-of-the-Art Facility Safety

- Leading service provider in Oilfield Cementing Operations within the Mid-Continent Region and Permian Basin
- Highly experience and professionally trained team
- Backed by Natural Gas Partners
- Delivering engineered solutions to execute demanding and technical jobs
- Exponential growth profile since inception
- Dedicated to the culture of Health, Safety and Environment
- Zero Lost Time Injuries
- Third party certified facility and laboratory

Spinnaker's Trademarked Cementing Technology

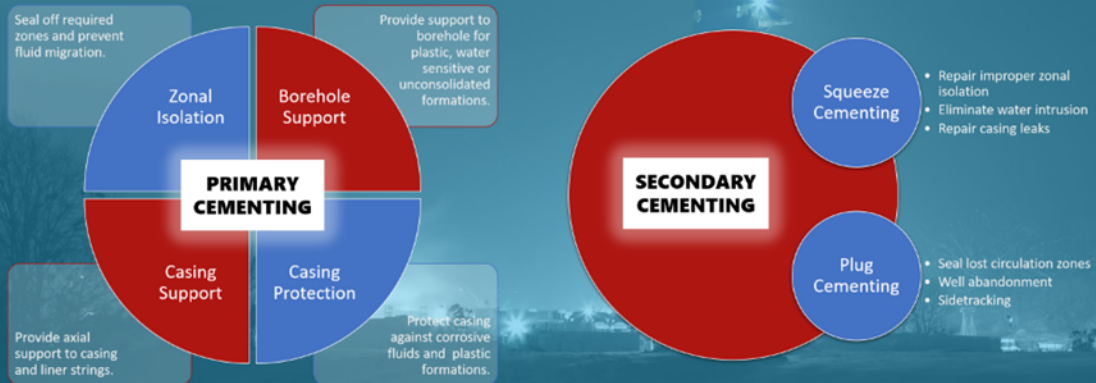
Nitro Bond
 Oilfield Cementing Services

© 2023 Spinnaker Cementing Solutions. All Rights Reserved.



Spinnaker strives to deliver high quality and competent Oilfield Cementing service to our customers.

Our advanced lab equipment and loading facilities along with vast cementing experience help us provide distinct engineered solutions for the most demanding and technical jobs. Our line of specialty chemicals, cement blends and fluid systems for cementing; along with our highly trained personnel, deliver an uncompromised cementing solution for your needs of primary or secondary cementing jobs including those for wellbore integrity, casing support, zonal isolation or well abandonment. In addition, we are proud to introduce NitroBond, our foam cementing technology designed to attain excellent mechanical properties and provide a long term solution towards wellbore integrity.



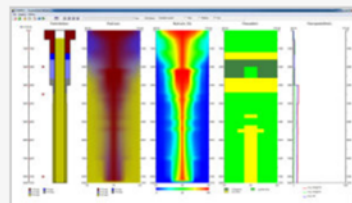
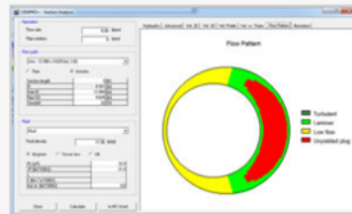
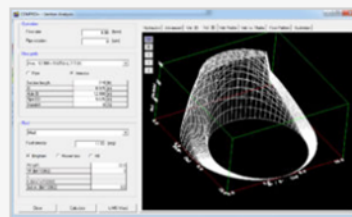
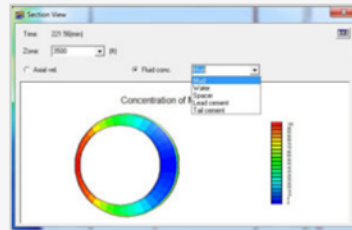
PRIMARY CEMENTING SOLUTIONS

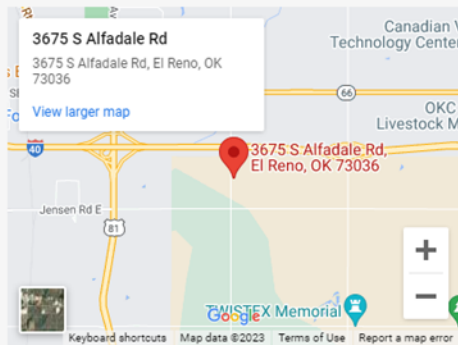
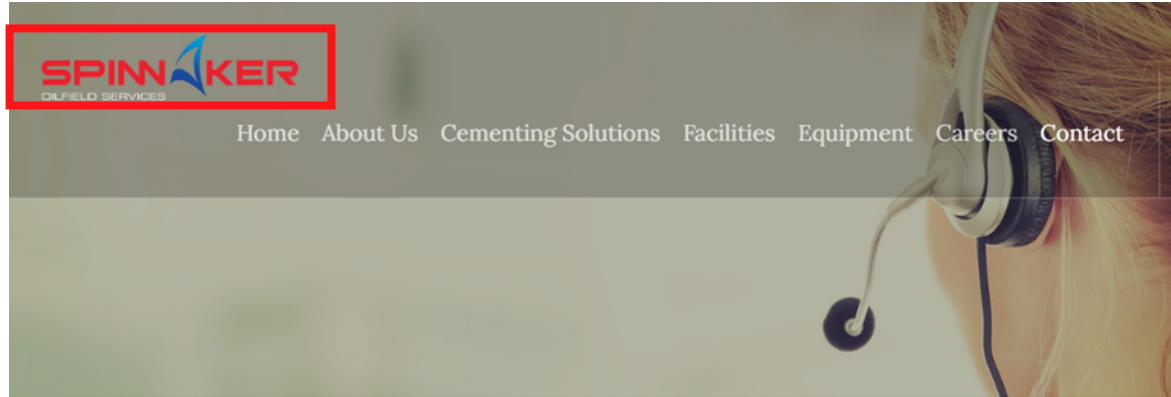
SECONDARY CEMENTING SOLUTIONS

Software Solutions : CEMPRO+

Designed for land, offshore, conventional and/or foamed operations, CEMPRO+ uses advanced numerical methods to solve momentum and continuity equations on 3D grids and calculates the fluid concentration as well as displacement efficiency. It accounts for many factors that can affect the efficiency of a displacement job including fluid properties, pumping rates, casing standoff and complex wellbore geometry. Some of the features include:

- Displacement efficiency
- 2D map of fluid concentration
- Survey import from text or PDF® file
- U-tube simulation
- Offshore – fluid returns to sea floor
- Forward or reverse circulation
- ECD and pressure
- P/T dependent density and rheology
- 12 fluids, each with up to 40 stages
- Circulating temperature
- Foamed cementing
- Displacement animation
- Hook load
- Job evaluation
- Gas flow potential
- Circulation sub
- Eccentric annuli
- Displacement fluid compressibility





Headquarters (El Reno, OK)

3675 S Alfadale Rd.
El Reno
OK 73036

Phone: 405-345-9550

Email: info@spinnakeroil.com



Hobbs, NM

324 N. Magnum Industrial Rd
Hobbs, NM 88240

Phone: 575-235-5150

Email: info@spinnakeroil.com



Contact Details

Sales

Danney Edwards (Mid-Con/Permian)
danney.edwards@spinnakeroil.com
(918) 633-0529

Will Higginbotham (Mid-Con/Permian)
will.higginbotham@spinnakeroil.com
(405) 708-2258

Winston Kyser (Houston)
winston.kyser@spinnakeroil.com
(405) 465-3705

Himanshu Maheshwari (Houston)
hm@spinnakeroil.com
(405) 808-6250

Operations

Don Atchison (Operations Manager)
don.atchison@spinnakeroil.com
(405) 345-9552

Bhaskar Basnet (Engineering)
engineering@spinnakeroil.com
(405) 808-6450

Coordinators – Mid-Con
(405) 420-3534

Ed Devol (Mid-Con HSE-DOT)
dotsafety@spinnakeroil.com
(405) 534-9190

Scott Walton (Mid-Con Area Manager)
scott.walton@spinnakeroil.com
(405) 535-6561

Coordinators – Permian
(575) 552-3378

Miles Hagee (Permian Area Manager)
miles.hagee@spinnakeroil.com
(405) 464-9932

Doug Foster (Permian HSE-DOT)
dotsafety@spinnakeroil.com
(575) 602-1044

