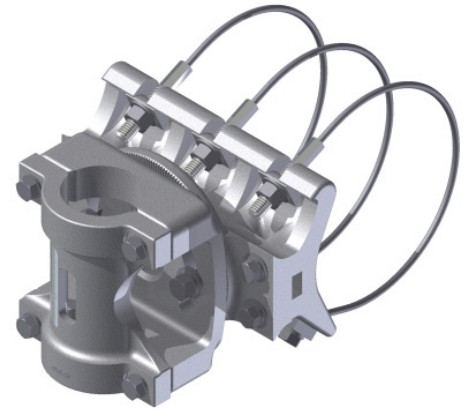


INSTALLATION INSTRUCTIONS

AB-3040 TRITON CLAMP ASSY 3/16" Cable Mount

Tools Required: 9/16" Deep Socket for 3/8" Bolt
11/16" Deep Socket for 7/16" Nut
3/8" Open End Wrench
Torque Wrench
Hack Saw

Power tools can be used if care is given to not exceed torque values. Best practice is to lightly snug the fasteners down with power tools and torque to specification with a torque wrench. Using anti seize on stainless to stainless connections is mandatory when using power tools as the heat from rapid assembly will cause galling and seizure of the hardware.



Attaching Clamp Kit to Mast Arm or Pole

1. Remove the tube saddle, tube clamp, and adapter plate from the assembly.
2. Loosen the (6) 3/8" bolts on the cable plates.
3. Adjust the nuts flush to the top of the Cable Screw as shown. (Figure 1)
4. Feed the wiring through the center of the clamp and place on the mast arm as desired. (Figure 1)
5. Place the cable screw assemblies in the casting pawls of the female clamp as shown. (Figure 2)
6. Pull the cables to tighten the cables on the mast arm.
7. Torque the (6) 3/8" cable plate bolts to 22 ft-lb. **DO NOT OVERTIGHTEN.**
8. Snug the nuts on the cable screw assemblies just enough to hold the clamp kit in position.
9. Plumb and level the clamp as needed on the mast arm.
10. Starting with the center cable use a 3/8" Open End Wrench to hold the cable screw and torque the cable screw assembly to 36 ft-lb. **DO NOT OVERTIGHTEN.** Do not allow the cable to rotate while torquing the nut.
11. Place the free ends of the cables in the slots provided on the clamp body and position the adapter plate on the clamp making sure the cables are not pinched between the clamp and adapter body. Install the (4) 3/8" hex head bolts, flat washers, and lock washers and torque to 22 ft-lb. **DO NOT OVERTIGHTEN.**

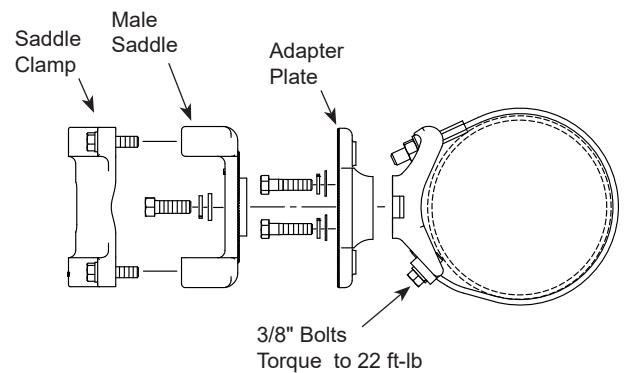


Figure 1

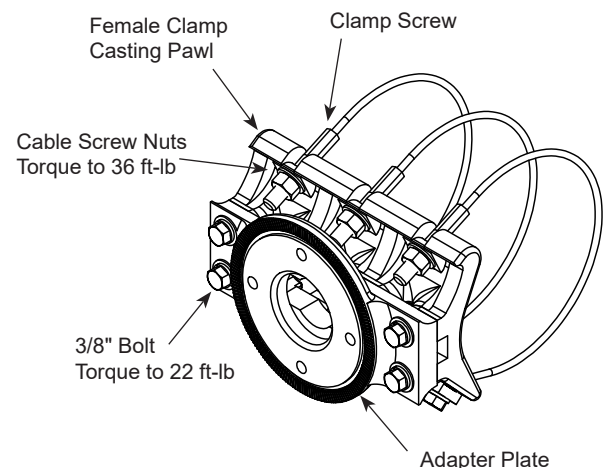


Figure 2

Continued on back

INSTALLATION INSTRUCTIONS

AB-3040 TRITON CLAMP ASSY 3/16" Cable Mount

Continued from front

Tube Support Assembly

12. Install all equipment on the 2" support tube.
13. Place the support tube assembly in the saddle and place the saddle clamp in position. Install the (4) 3/8" washers, lock washers, and bolts and torque to 22 ft-lb. **DO NOT OVERTIGHTEN.**
14. Install the saddle assembly (with its attachments installed) onto the female clamp and install the (2) 7/16" bolts, lockwashers, and nuts. (Figure 3)
15. Position the assembly as needed and torque the (2) 7/16" bolt to 36 ft-lb. **DO NOT OVERTIGHTEN.**

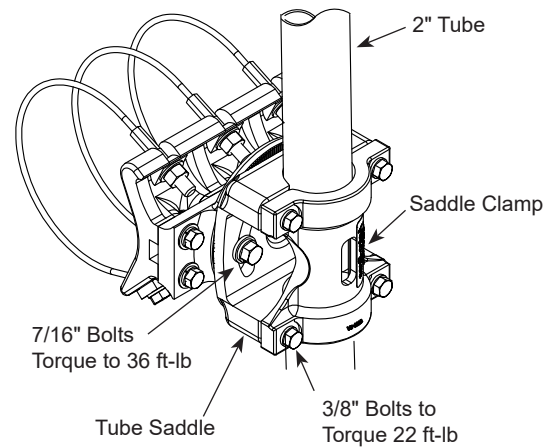


Figure 3

COVERED BY ONE OR MORE OF THE FOLLOWING U.S. PATENTS:
3586280, 3764099, 3854685, 4659046. OTHERS PENDING.

