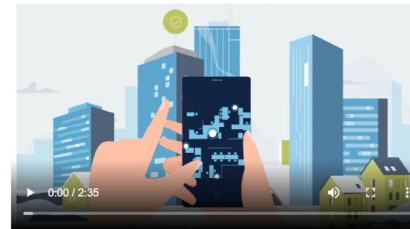


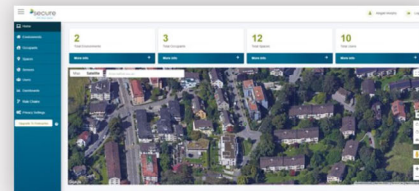
How do you ensure that people feel safe in their environment, whilst also maintaining operational excellence? Secure is a new solution which benefits both businesses and consumers, tracking real-time occupancy and monitoring ambience, water, waste, carbon emissions and energy consumption, all under one dashboard.

Secure is a new solution which benefits both businesses and consumers, tracking real-time occupancy and monitoring ambience, water, waste, carbon emissions and energy consumption, all under one dashboard.

Secure is an innovative platform designed to meet the emerging facility management requirements offering landlords and property managers real-time data to enable efficient decision making. With a key focus on Data Analytics, Digital Twin and ESG, Secure captures, collates and manages extensive and diverse information and delivers it in an easy-to-use format.



Futureproof your buildings and manage operations remotely



Data analytics

Secure reports on your data aggregated from disparate building systems, providing insights into usage such as energy consumption, occupancy and sanitization.

