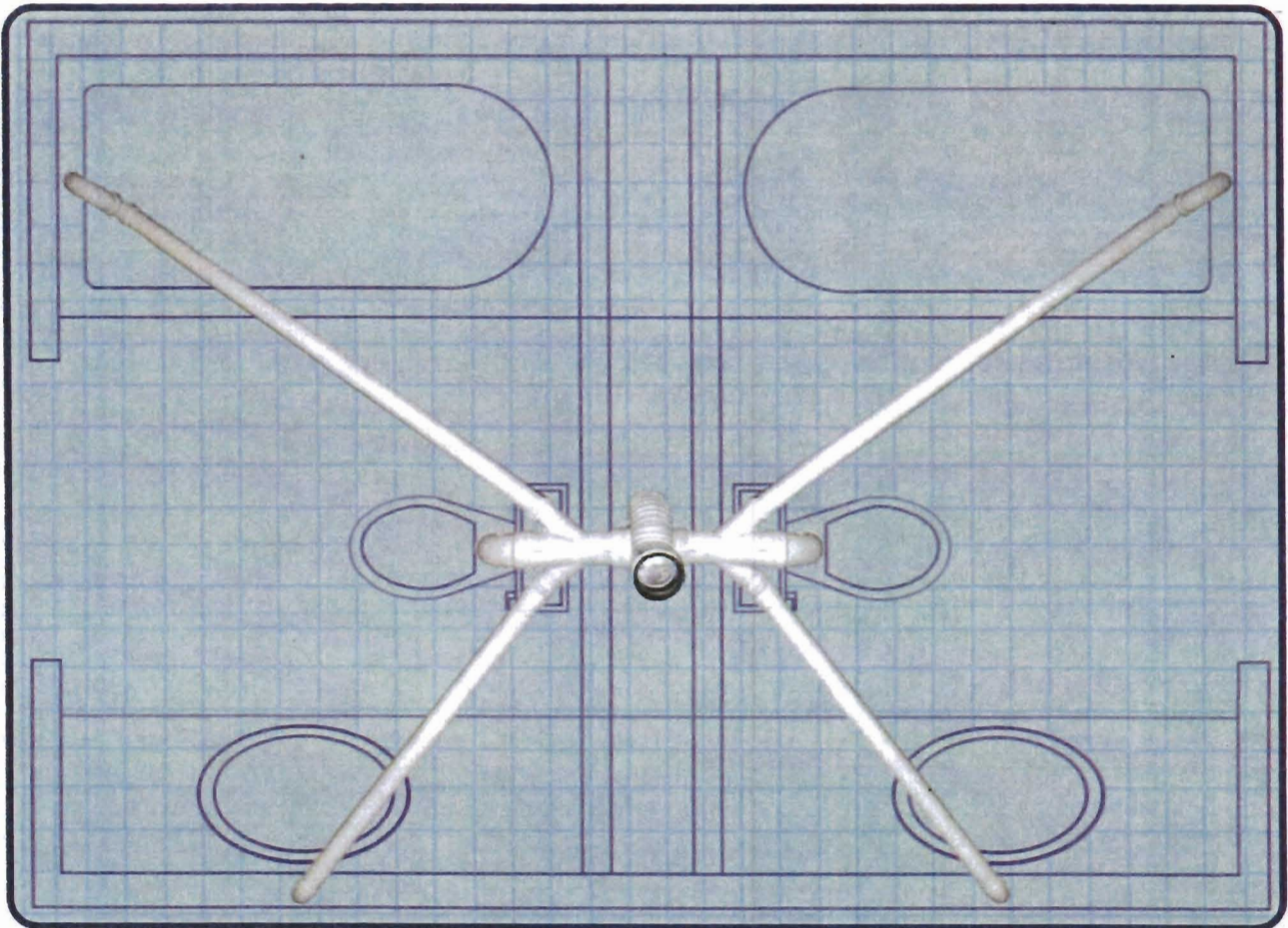




ProVent Systems

Fixed Point Fabrication
For Plumbing Contractors

A typical hotel bathroom usually has fixtures on both sides of the Stack Fitting as shown. ProVent has a special double wye that fits in between the stack in a 6" wall and a 12" rough water closet. The two 2" side openings are molded on a 22° raised angle so using another 22° PVC fitting will roll the branch piping directly to the various openings.

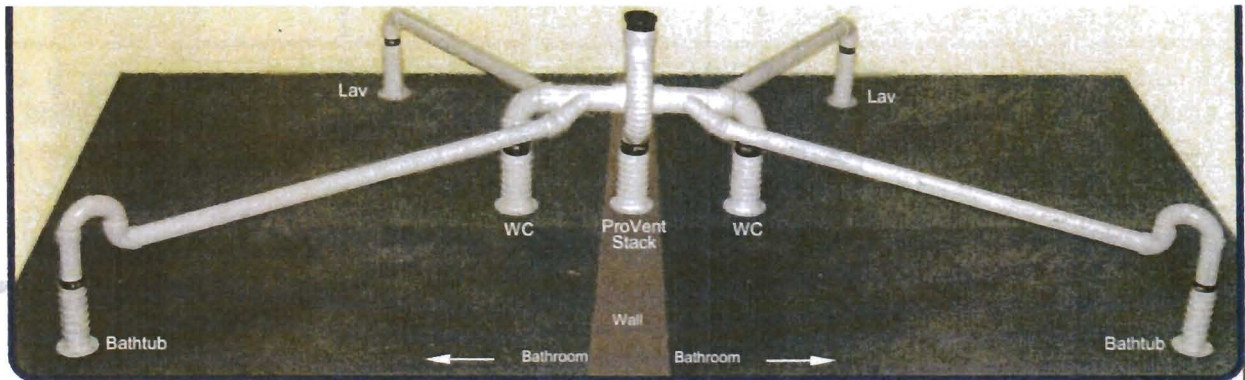


Picking up the lavatory underneath the slab eliminates the need to drill through all the stud walls. The top rough will be completed without any walls. The sleeves support the pipes without using regular hangers. The bath tub waste connects to ProSet's tub box.



Start by locating, from the plans, the fixture openings that cannot be moved, such as bathtubs and water closets. Then, secure the fab couplings onto a floor or a fab table in these exact locations.

The stack location should be determined by the best place to pick up the most fixtures in accordance with the branch length rules or the best location for using the least amount of pipe and fittings. Secure the stack fab coupling at that location.

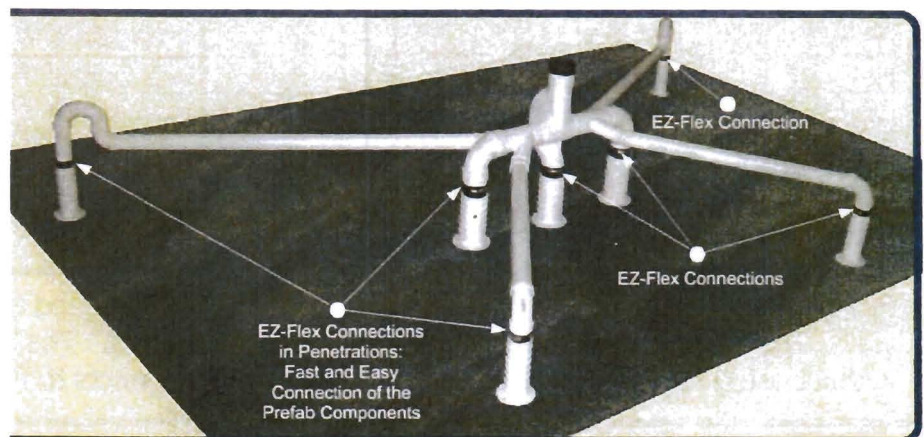


The vertical Stack Fitting gets connected to the lower stack by installing the PVC stack up leaving a 2-1/2" void between the pipe and the stack fitting. The EZ Mechanical Expansion Coupling gets rolled up and fits into the void space then unrolled filling the void and connects to the stack to the fitting by tightening the two stainless steel bands.



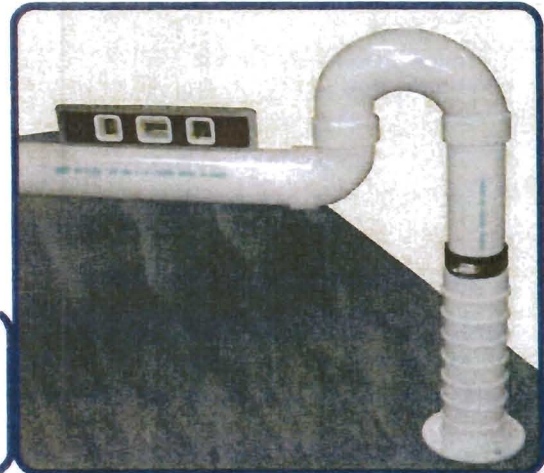
We recommend using E-Z Flex couplings on fab openings 3" or larger. They can also be used on the 2" fab openings.

This allows the pipe fabrications to install faster and easier.

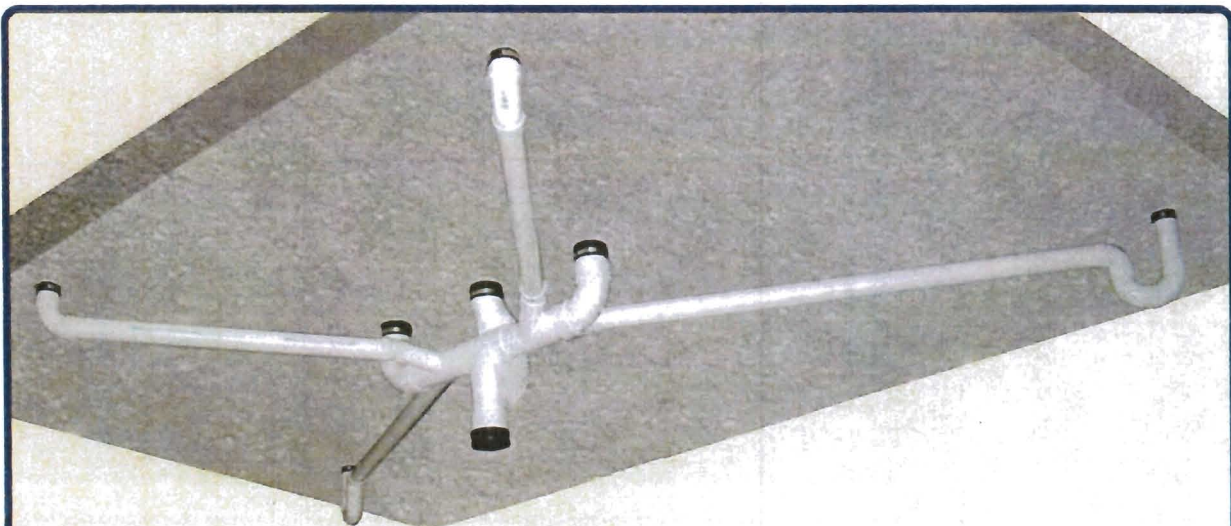




Make sure all the fabricated overhead piping will fit into the drop ceiling space. The stack sleeve can be raised up to recess the stack up into the slab if necessary. Drop ceilings are usually 12". Here we are 7-3/4" below the concrete ceiling.



You will be fabricating upside down so the pitch on the pipe will seem like it's pitching the wrong way. It must pitch from the fixture openings back to the stack branches.



The embedded sleeve couplings also act as a hanger and riser clamp (see WH listing) for the horizontal and vertical piping. Additional hangers may be required if the branch piping exceeds the horizontal lengths allowed by code.