

SKYLINK

A performance-driven data management solution for remote, mobile, and global operations



HARDWARE FEATURES

MECHANICAL

Size & Weight

- Dimensions: 8.0 x 5.0 x 1.5 in (12.7 x 20.3 x 3.2 cm)
- Weight: 1.6 lb. (0.7 kg)

LEDs

- Single multi-purpose, multi-color LED:
 - › Green = Initial Power On
 - › Red = Unit in Bootloader Mode
 - › Blue Blink = OS is Booting
 - › Blue Steady = Device is Ready
 - › Red Blink = Iridium Firmware Upgrade
 - › Blue Blink = SkyLink Firmware Upgrade

Connectors

- 1x cellular SMA female connector
- 1x Iridium SMA female connector
- 2x M12 connectors (1x Ethernet & Power, 1x USB & RS232)

OPERATING PARAMETERS

Electrical

- External power
 - › 10 – 34 VDC
 - › POE
- Power consumption
 - › 7W nominal power
 - › 18W peak power

Environmental

- Operating temperature range: -40°C to +70°C
- Storage temperature range: -40°C to +85°C
- Operating humidity range: ≤ 75% RH
- Storage humidity range: ≤ 93% RH

Regulatory Standards and Compliance

- US (FCC)
- EU (CE MARK)
- Canada (IC)
- IP65 rating

CONNECTIVITY

Cellular

- LTE-A CAT 6 module with M.2 form factor
- Supports LTE-A carrier aggregation
- Worldwide LTE-A and 3G UMTS / HSPA(+) coverage
- 300 Mbps receive (DL) / 50 Mbps transmit (UL)
- User-accessible SIM

Iridium Certus® 100

- Simultaneous voice and IP data
- 88 Kbps receive (DL) / 22 Kbps transmit (UL)
- Frequency: 1616 MHz – 1626.5 MHz
- Two (2) high-quality voice channels
- User-accessible SIM

Positioning

- Multi-constellation GNSS receiver in cellular module:
 - › GPS
 - › GLONASS
 - › BeiDou
 - › Galileo
- 33 tracking channels
- 99 acquisition channels
- 210 PRN channels
- Anti-jamming and multi-tone active interference canceller
- < 2.5 m CEP horizontal position accuracy

Wi-Fi

- 2.4 / 5 GHz
- IEEE 802.11 ac / a / b / g / n
- Certifications with multiple antennas:
 - › FCC (USA)
 - › IC (Canada)
 - › ETSI (Europe)
 - › Giteki (Japan)
 - › RCM (AU/NZ)

SOFTWARE FEATURES

INTERNET

- Cellular internet
- Satellite internet
- Ability to fail-over
- Ability to disable satellite data but not voice communication

VOICE

- Support for up to 2 FXS / FXO USB adapters
- Support for up to 20 SIP clients
- Call logs

CONFIGURATION

- Local configuration of SkyLink devices using Wi-Fi or Ethernet
- Remote configuration of SkyLink devices
- Bulk device configuration
- DHCP server, client, or static IP address
- Wi-Fi SSID and password
- POTS and SIP voice extensions

FIREWALL

- Firewall Profiles for quick and easy firewall setup
- Ability to apply different profiles per interface (satellite vs cellular)
- Advanced Rules that allow customers to add functionality beyond the set profiles

REPORTING

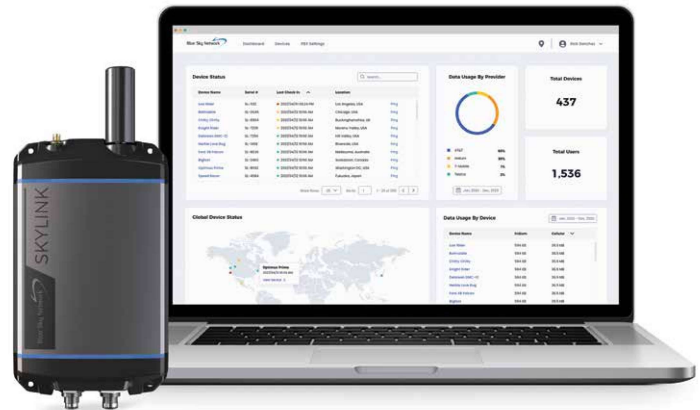
- Position and event reporting
- Customizable report rate
- Device data usage
- Network-wide data usage
- Data usage by transmission type
- Data usage by device type
- Device health monitoring
- Network-wide health monitoring
- Device diagnostics

MONITORING

- Device CPU and modem temperatures in real-time
- Modem signal strengths in real-time
- Modem data usage
- Least-cost routing status
- Voice call logs
- Device location monitoring
- Device health monitoring

DEVICE MANAGEMENT

- View status and customize settings in a web UI
- Firmware upgrade
- Factory reset
- Customizable schedule



ABOUT BLUE SKY NETWORK

Blue Sky Network offers innovative satellite solutions for worldwide voice, data, and fleet operations. Our pioneering platform, SkyRouter™, is an exclusive, customizable cloud-based portal for dual-mode tracking, analytics, and communications for real-time fleet monitoring and performance management. With our SkyRouter™ and SkyLink services, capture, display, disseminate, and port data from every asset in the field to the command center with uninterrupted global coverage.

Blue Sky Network is an Iridium Certus® service provider and value-added manufacturing partner.

CONTACT US

+1 858-551-3894

sales@blueskynetwork.com

www.blueskynetwork.com

