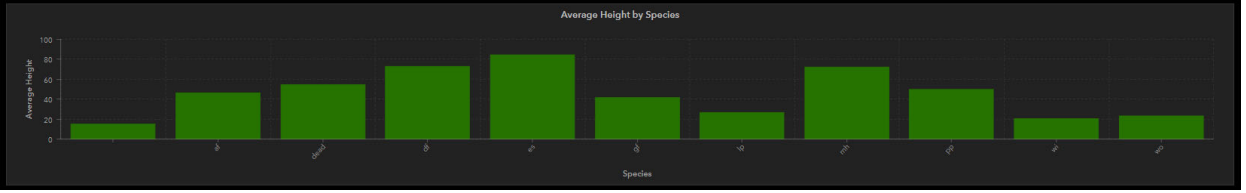
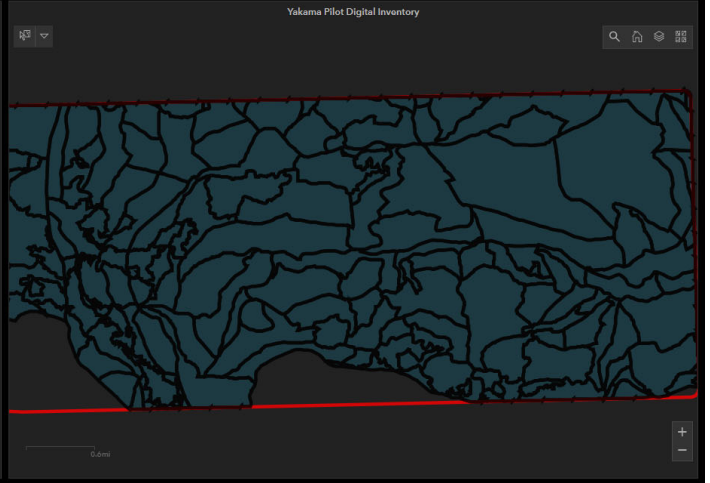
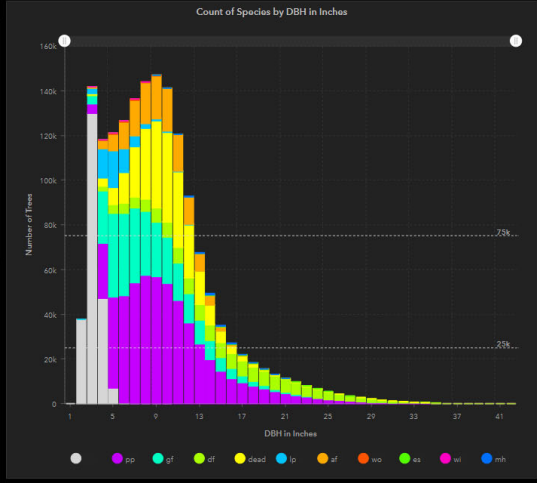


- Stand ID # 61,603,051
- Stand ID # 7,163,502
- Stand ID # 7,163,501
- Stand ID # 7,163,402
- Stand ID # 7,163,203
- Stand ID # 7,163,401
- Stand ID # 7,163,202
- Stand ID # 7,163,302
- Stand ID # 71,631,011
- Stand ID # 7,163,201
- Stand ID # 61,603,041
- Stand ID # 6,160,508
- Stand ID # 7,163,301
- Stand ID # 6,160,608
- Stand ID # 61,603,031
- Stand ID # 6,160,507
- Stand ID # 6,160,607
- Stand ID # 6,160,606
- Stand ID # 6,160,506
- Stand ID # 6,160,506





INVENTORY SERVICES

You are Here: Homepage » Services » Inventory Services



Decades of Field Data And Inventory Experience

Leveraging nearly 4 decades of operational inventory field experience with 30,000 to 60,000 plots annually across North America. These forest inventory efforts include; annual inventory updates through Variable Radius Plots (VRP), timber valuations ([Real Estate](#)), permanent growth and yield plots (CFI), carbon offset verifications, and Digital Inventory® verification samples (LiDAR/Remote Sensing). Our experienced field professionals provide great confidence in your forest measurement information

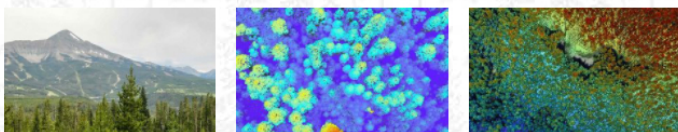
Contact a Forester



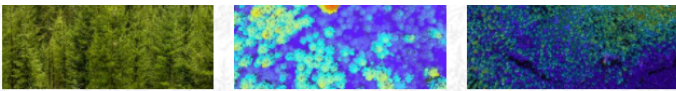
Know Your Forest By Individual Trees

Have the precise coordinates of single-trees in your forest. Provide the greatest accuracy of silvicultural information to field professionals and managers. A Digital Inventory® at your fingertips to focus management and financial resources or re-stratify the landscape based on desired tree attributes. Identify high-conservation value areas including; nesting sites, forage, cover, and riparian conditions. Every custom selection or polygon is a list of individual trees, each with its unique features. Then with multiple flights, measure physical growth and calculate site-index.

ForestView®



- GPS Location
- Height
- Crowns
- Volume
- Piece Size
- Diameter
- Site Productivity

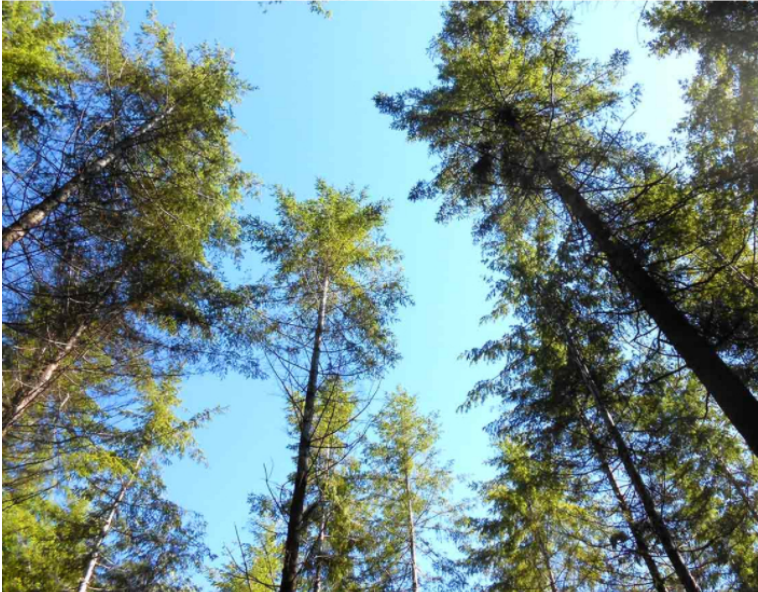


Area or Property-Specific Log Size Distributions

Species, diameter, height, and product distributions. Merchandize or re-merchandize any area as markets or product demand changes. Estimate logging and hauling costs for every acre. Reduce inventory costs, know total-forest stocking, and geographically map the feasibility of supply-chain decisions.

Improving and Forecasting Cost Reductions

Species, diameter, height, and product distributions. Merchandise or re-merchandise any area as markets or product demand changes. Estimate logging and hauling costs for every acre. Reduce inventory costs, know total-forest stocking, and geographically map the feasibility of supply-chain decisions.



Improved Future Forest Growth & Yield

Model growth, mortality, and stand dynamics over time under varying silvicultural alternatives with greater accuracy and reliability at multiple scales. Our robust data provide the power to make better-informed decisions across a landscape at the individual-tree and ownership level.

Discounted Cash Flow and Investment Analysis



Investment Analysis

Timberland valuation at any scale from 10 to 10-million acres. We implement the cost-based approaches using sophisticated growth and yield models, harvest scheduling, and market analyses. Comparable sales from our front-line [Real Estate Team](#), pair the highest quality data with the most sophisticated models to provide investment-grade recommendations with confidence.



Our Mission

Northwest Management Inc. is a leader in forestland and environmental management, providing expertise in forestry, technology, wildfire, water resources, wildlife, hazard management and planning. Nearly four decades of field experience throughout the U.S., a well-established team of resource professionals, and the use of cutting-edge technology is why landowners choose Northwest Management Inc.

Our Offices:

Idaho - 208 883-4488

Washington - 509-684-5021

Montana - 406 442-7555

NWI Careers



**NORTHWEST
MANAGEMENT, INC.**

Copyright © 2019 Northwest Management, Inc. All Rights Reserved.

[PRIVACY POLICY](#) [TERMS OF USE](#) [WEBSITE TERMS AND CONDITIONS](#)

